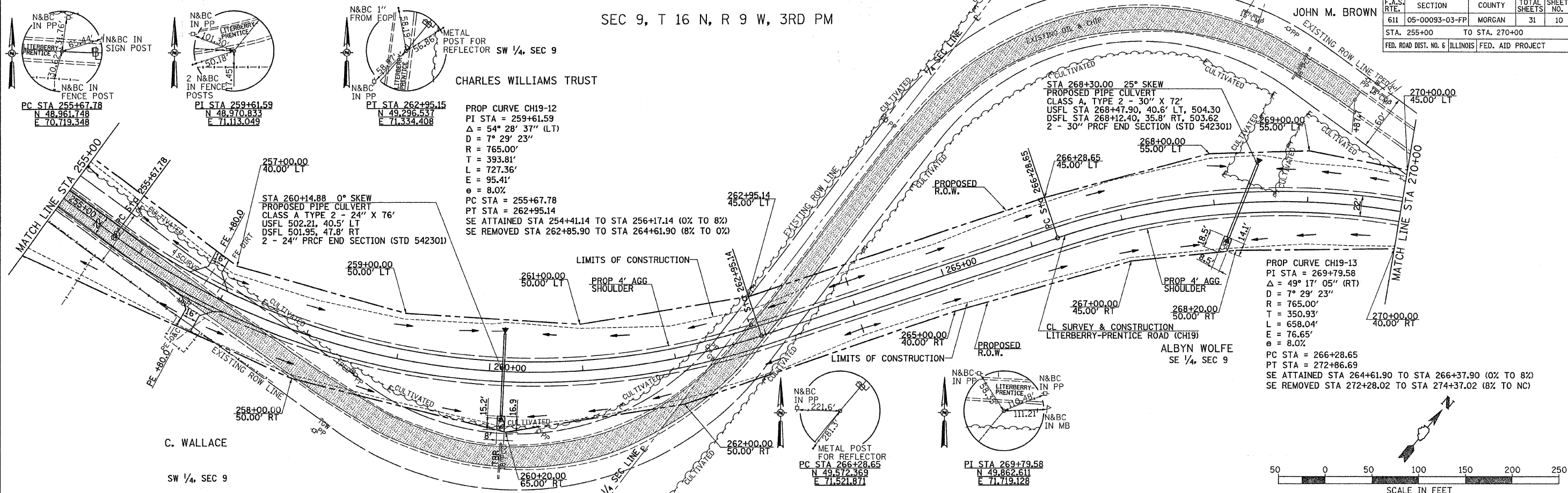


F.A.S. RTE.	SECTION	COUNTY	TOTAL SHEETS	SHEET NO.
611	05-00093-03-FP	MORGAN	31	10
STA. 255+00 TO STA. 270+00				
FED. ROAD DIST. NO. 6 ILLINOIS FED. AID PROJECT				

SEC 9, T 16 N, R 9 W, 3RD PM

JOHN M. BROWN



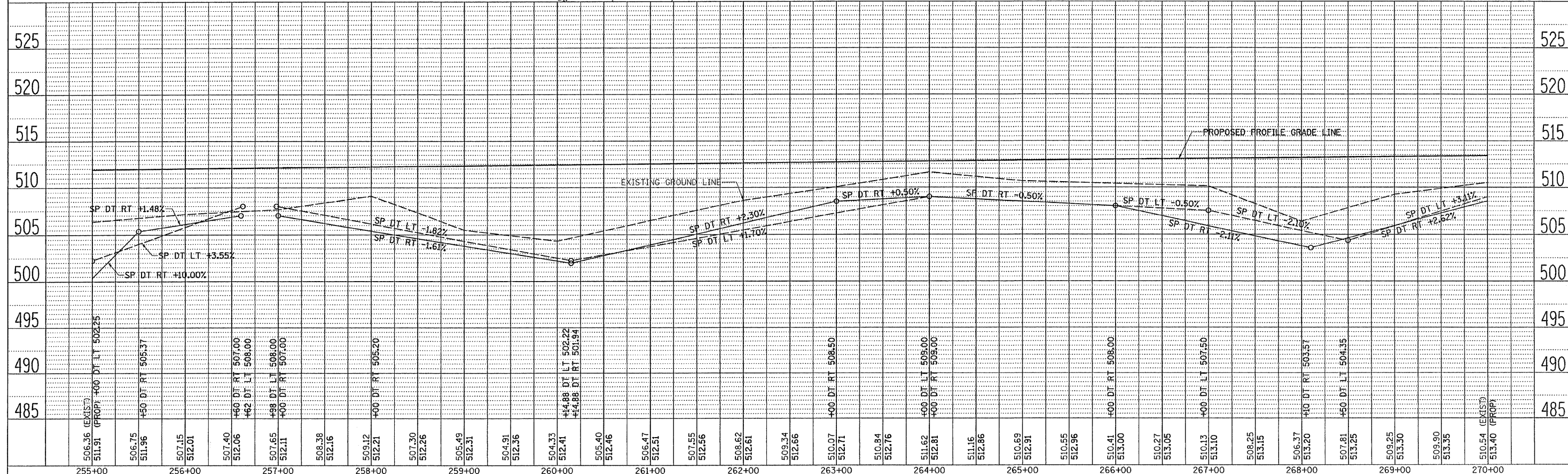
C. WALLACE  
SW 1/4, SEC 9

CHARLES WILLIAMS TRUST

ALBYN WOLFE  
SE 1/4, SEC 9

DATE	BY

DATE	BY



LITERBERRY-PRENTICE ROAD (CH 19), PLAN AND PROFILES, STA 255+00 TO STA 270+00