

F.A.S. RTE.	SECTION	COUNTY	TOTAL SHEETS	SHEET NO.
611	05-00093-03-FP	MORGAN	31	11
STA. 270+00 TO STA. 285+00				
FED. ROAD DIST. NO. 6 ILLINOIS FED. AID PROJECT				

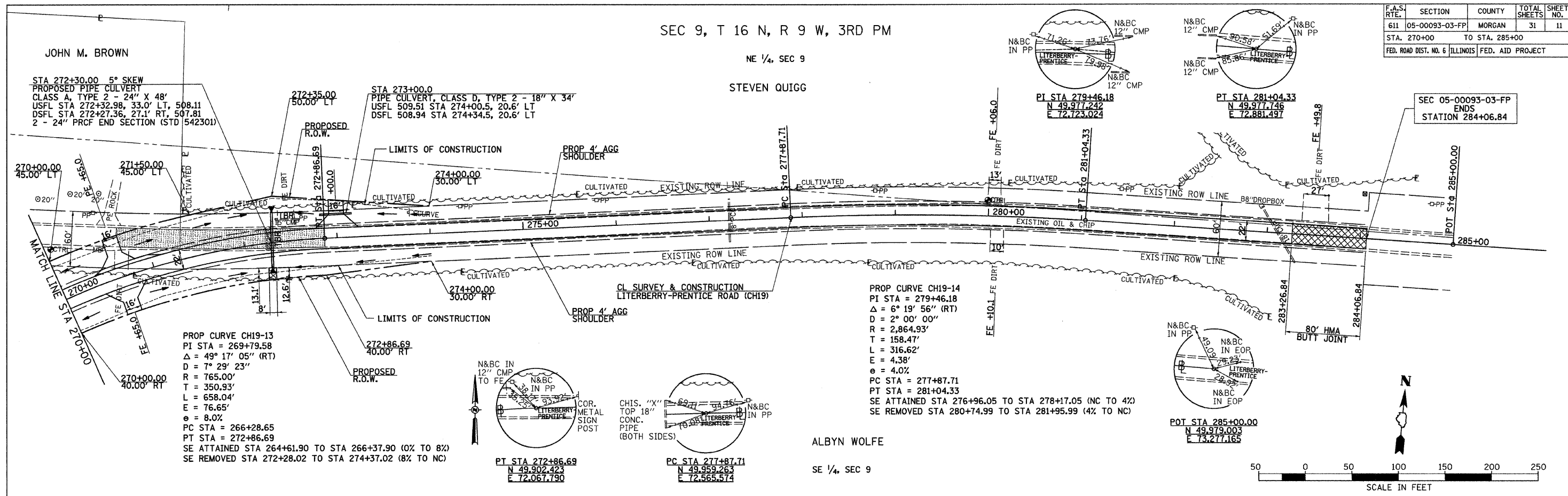
SEC 9, T 16 N, R 9 W, 3RD PM

NE 1/4, SEC 9

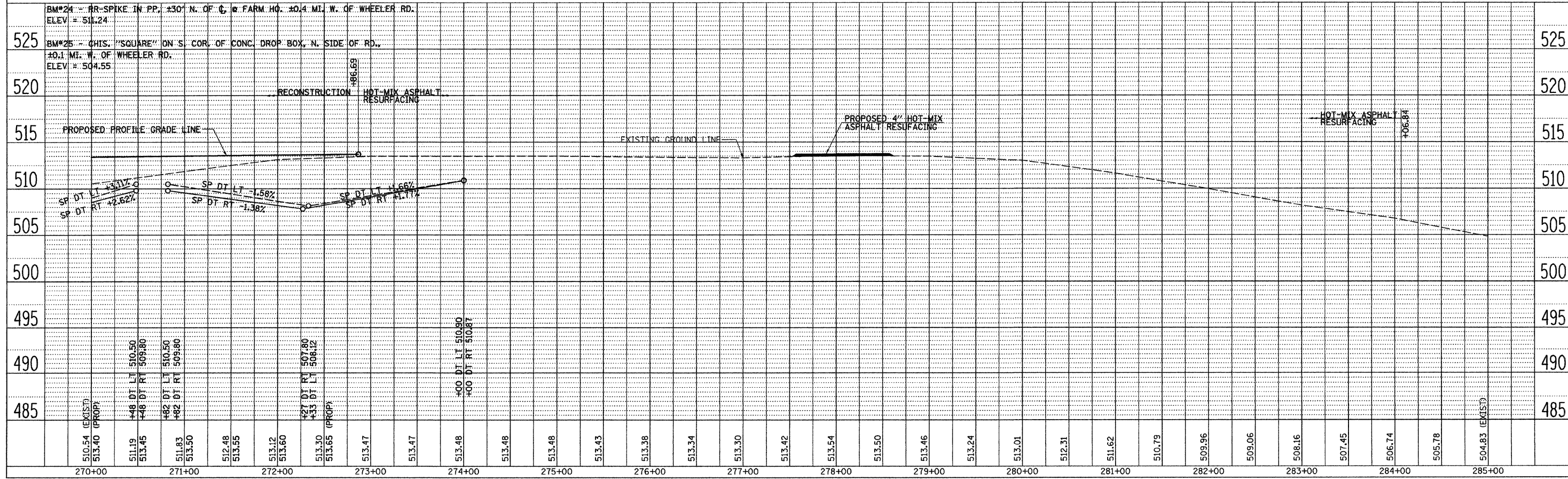
STEVEN QUIGG

DATE	BY

PLAN	REVISION



DATE	BY



LITERBERRY-PRENTICE ROAD (CH 19), PLAN AND PROFILES, STA 270+00 TO STA 285+00