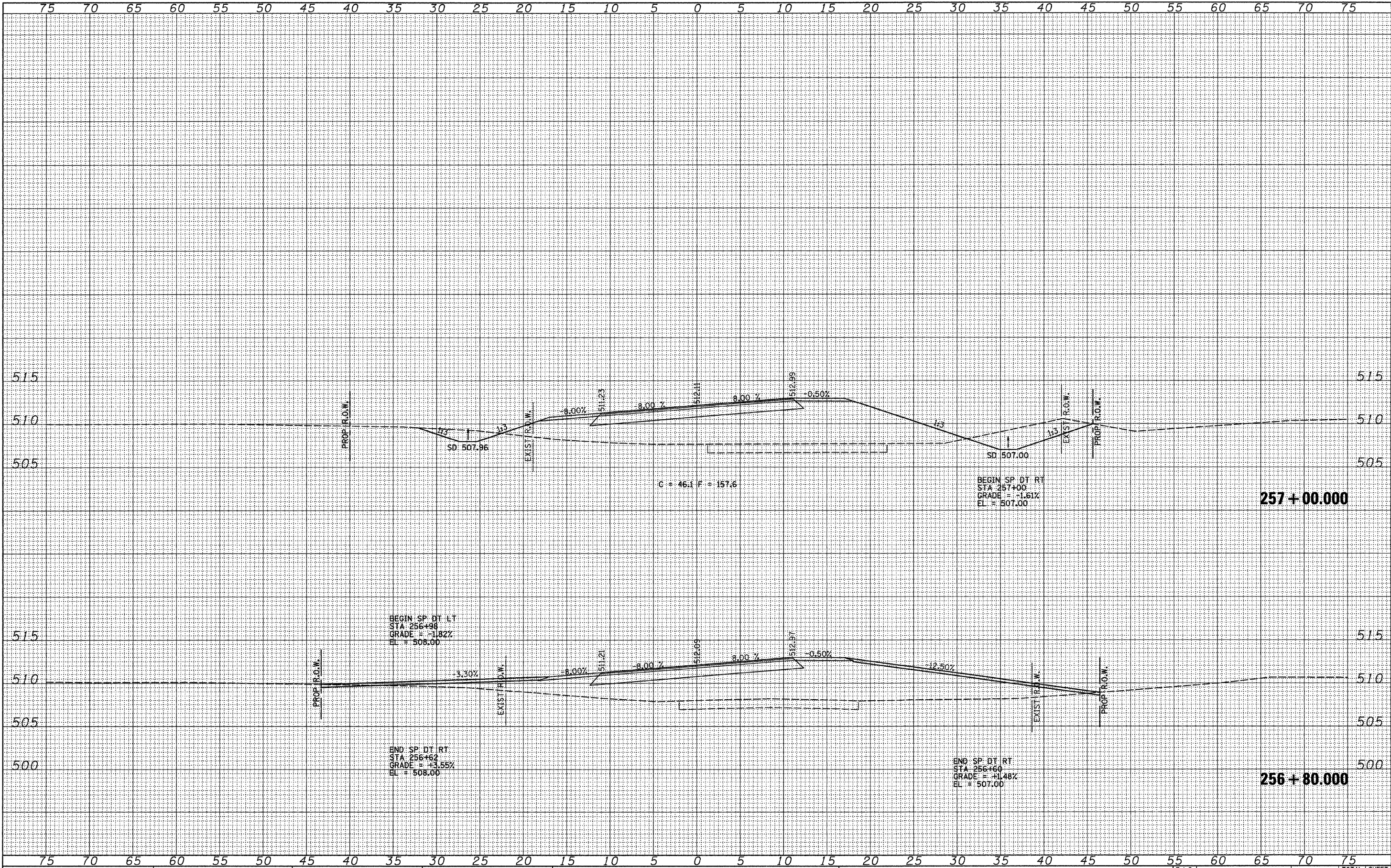


FINAL SURVEY	SURVEYED	BY	DATE
NOTE BOOK	PLOTTED		
NO.	TEMPLATE		
	AREAS		
	CHECKED		

ORIGINAL SURVEY	SURVEYED	BY	DATE
NOTE BOOK	PLOTTED		
NO.	TEMPLATE		
	AREAS		
	CHECKED		



FILE NAME = v:\transportation\2839\2839\sheet.dgn
 USER NAME = jolson

DESIGNED -	REVISD -
DRAWN -	REVISD -
CHECKED -	REVISD -
DATE -	REVISD -

**STATE OF ILLINOIS
DEPARTMENT OF TRANSPORTATION**

**LITERBERRY-PRENTICE ROAD (CH 19)
CROSS SECTION SHEETS**

SCALE: SHEET NO. 8 OF 16 SHEETS STA. 256+80.000 TO STA. 257+00.000

F.A.S. RTE.	SECTION	COUNTY	TOTAL SHEETS	SHEET NO.
611	05-00093-03-FP	MORGAN	31	23
			CONTRACT NO.	93535
ILLINOIS FED. AID PROJECT				