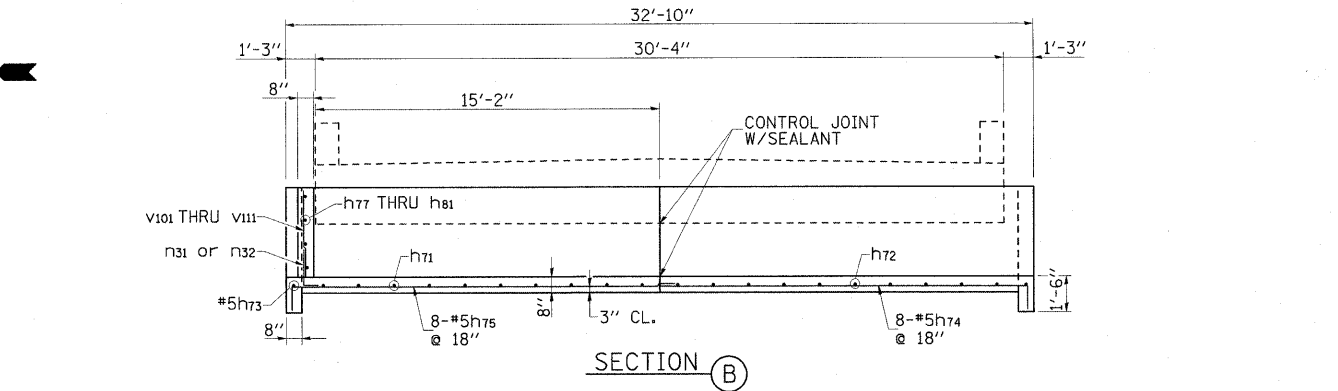
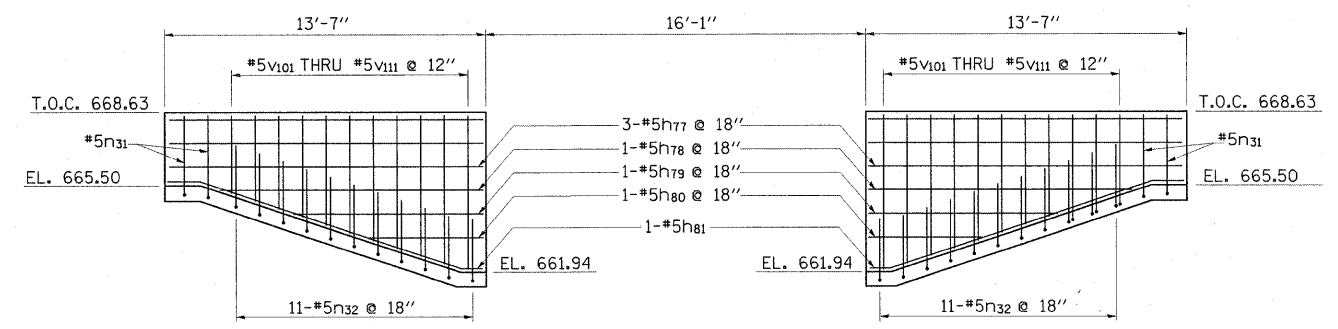


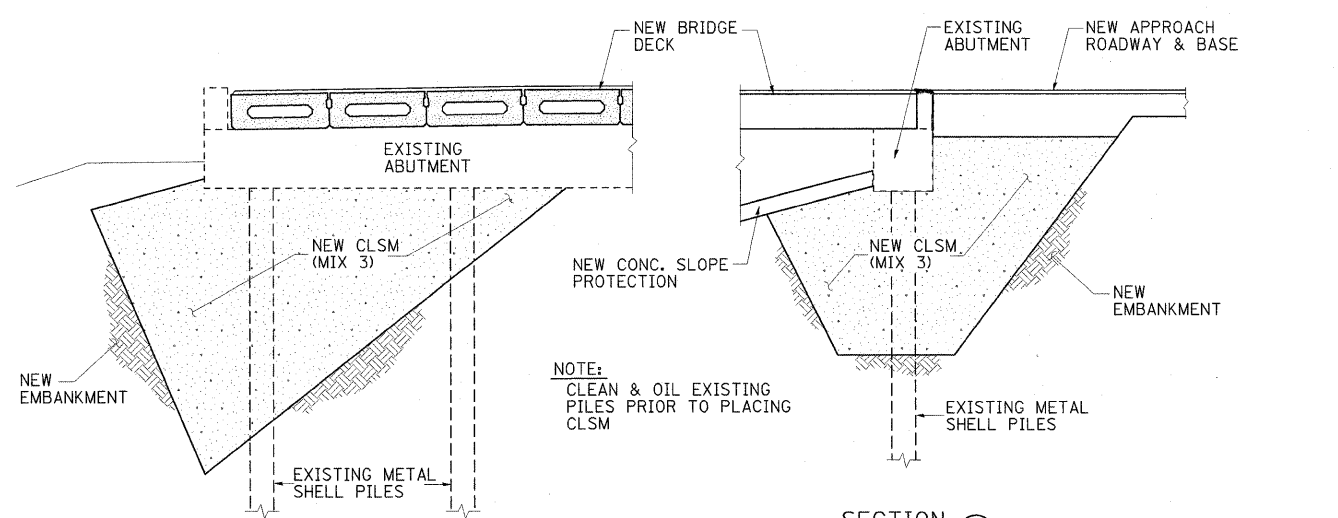
PLAN - SLOPEWALLS



SECTION B

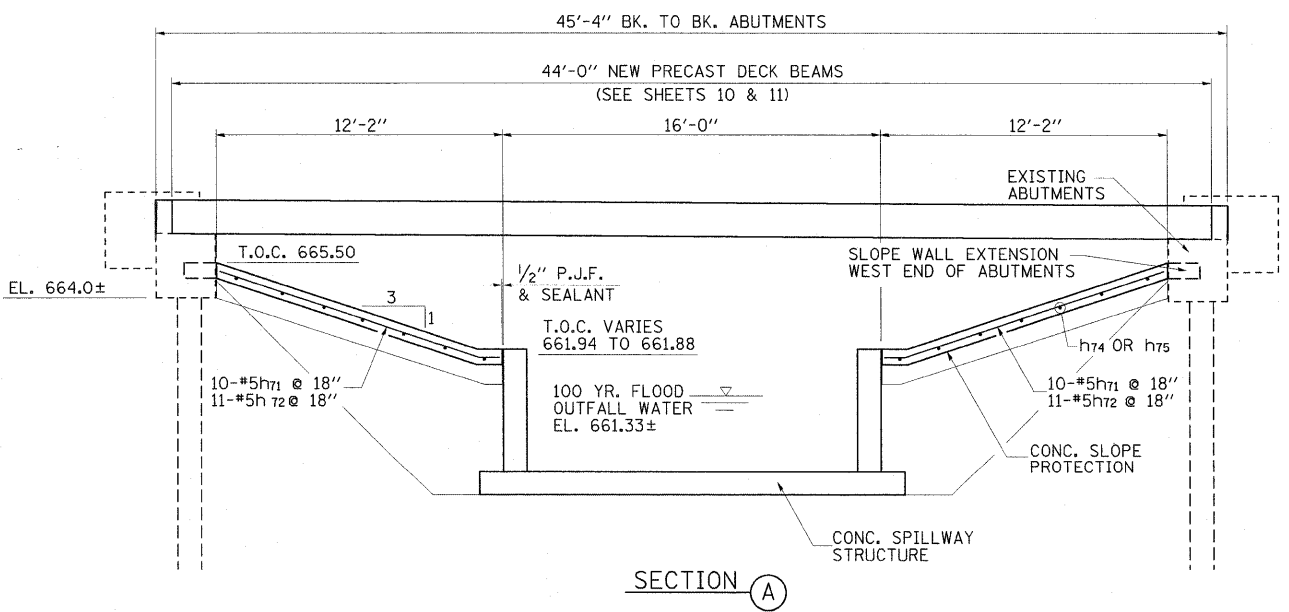


ELEVATION C



SECTION E

PILE REPAIR



SECTION A

SLOPE WALL-BILL OF MATERIAL

BAR	NO.	SIZE	LENGTH	SHAPE
h71	20	5	12'-6"	—
h72	22	5	12'-6"	—
h73	2	5	13'-10"	—
h74	16	5	17'-0"	—
h75	16	5	19'-5"	—
h76	4	5	5'-0"	—
h77	6	5	13'-3"	—
h78	2	5	11'-1"	—
h79	2	5	8'-0"	—
h80	2	5	4'-10"	—
h81	2	5	14'-3"	—
n31	4	5	4'-3"	J
n32	22	5	3'-6"	J

BILL OF MATERIAL (CONT.)

BAR	NO.	SIZE	LENGTH	SHAPE
v101	2	5	3'-3"	—
v102	2	5	3'-7"	—
v103	2	5	3'-11"	—
v104	2	5	4'-3"	—
v105	2	5	4'-7"	—
v106	2	5	4'-11"	—
v107	2	5	5'-3"	—
v108	2	5	5'-7"	—
v109	2	5	5'-11"	—
v110	2	5	6'-3"	—
v111	2	5	6'-6"	—

BILL OF MATERIAL (CONT.)

ITEM	UNIT	QUANTITY
CONCRETE STRUCTURES	CU. YD.	25.6
REINFORCEMENT BARS	POUND	1580
CONTROLLED LOW-STRENGTH MATERIAL (MIX 3)	CU. YD.	160

SEE SHEET 23 OF 32 FOR BAR BEND DETAILS