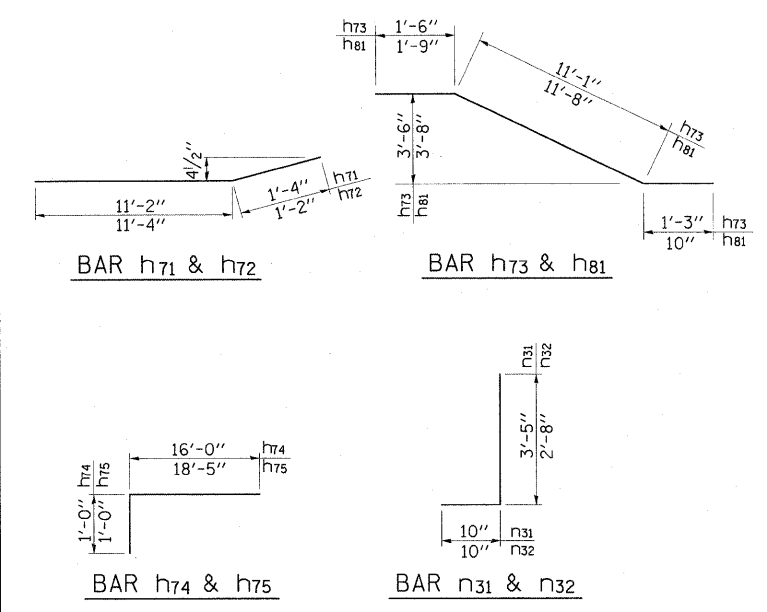
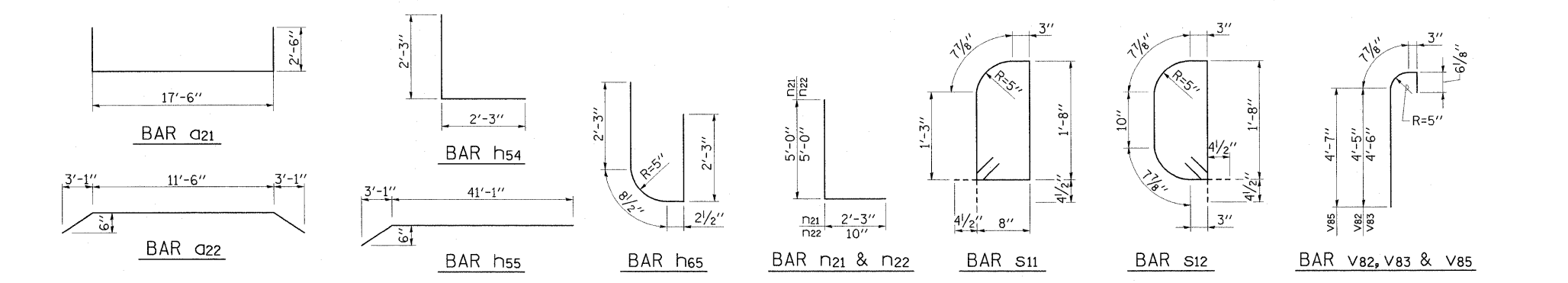


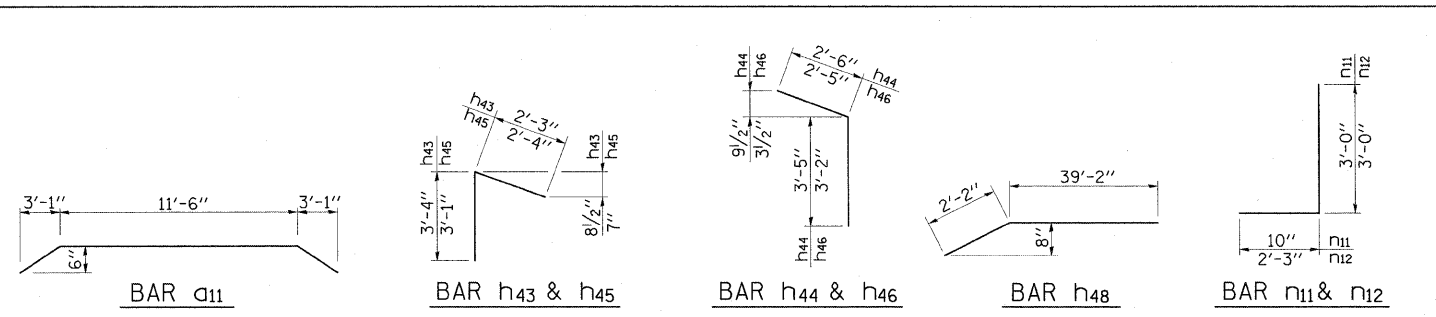
STILLING BASIN BAR BEND DETAILS



SLOPE WALL  
BAR BEND DETAILS



WEIR STRUCTURE BAR BEND DETAILS



SPILLWAY CHUTE BAR BEND DETAILS

FILE NAME = ...sheets\Pr_Bar_Bend_Details.dgn	USER NAME = Kristin Timmons	DESIGNED - BWF/JJF	REVISED -	<b>NIEMANVILLE TRAIL MONTGOMERY COUNTY, ILLINOIS</b>	<b>PROPOSED REINFORCEMENT BAR BEND DETAILS F.A.U. ROUTE 8243</b>			F.A.U. RTE. 8243	SECTION 09-00134-00-DR	COUNTY MONTGOMERY	TOTAL SHEETS 32	SHEET NO. 23
	PLOT SCALE = 2.6656" / IN.	DRAWN - GLD	REVISED -		SCALE: N/A	SHEET NO. 23 OF 32 SHEETS	STA. TO STA.	CONTRACT NO. 93537				
	PLOT DATE = 3/3/2010	CHECKED - KLT/JJF	REVISED -		FED. ROAD DIST. NO. 6 [ILLINOIS] FED. AID PROJECT							
		DATE - 3/2/2010	REVISED -									