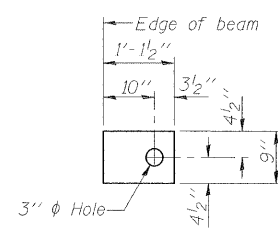


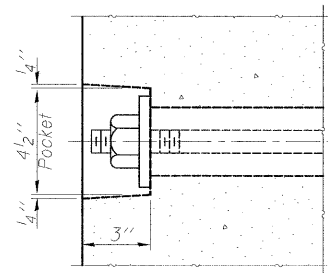
FABRIC BEARING PAD
(Interior)



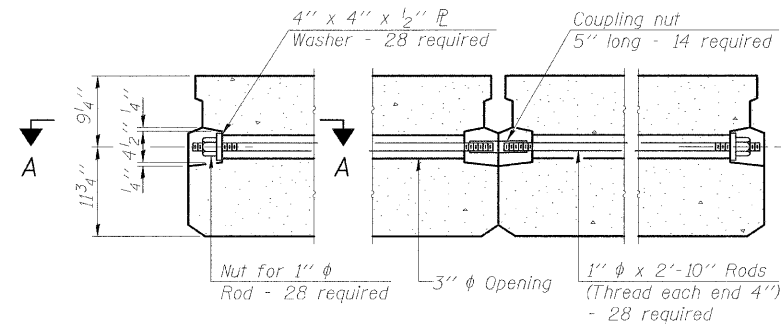
FABRIC BEARING PAD
(Exterior)

FIXED

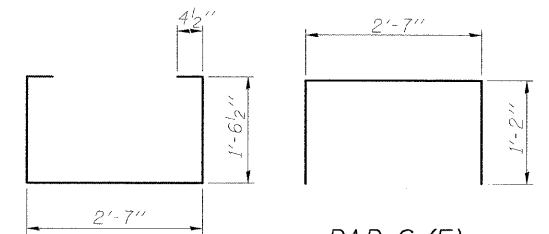
Notes:
All bearing pads shall be 1" thick.
Omit holes when using expansion bearings.
Expansion bearing pad shall be bonded to the substructure.



SECTION A-A

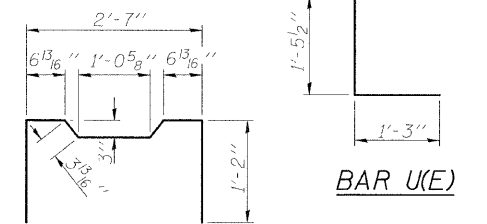


TYPICAL TRANSVERSE TIE ASSEMBLY



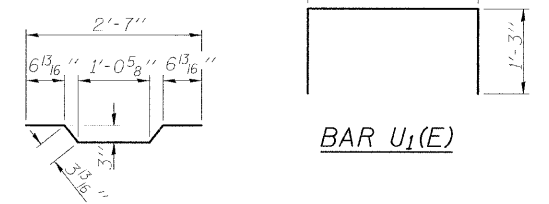
BAR S₁(E)

BAR S(E)



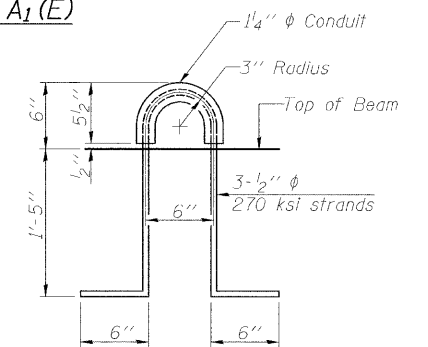
BAR U(E)

BAR S₂(E)



BAR U₁(E)

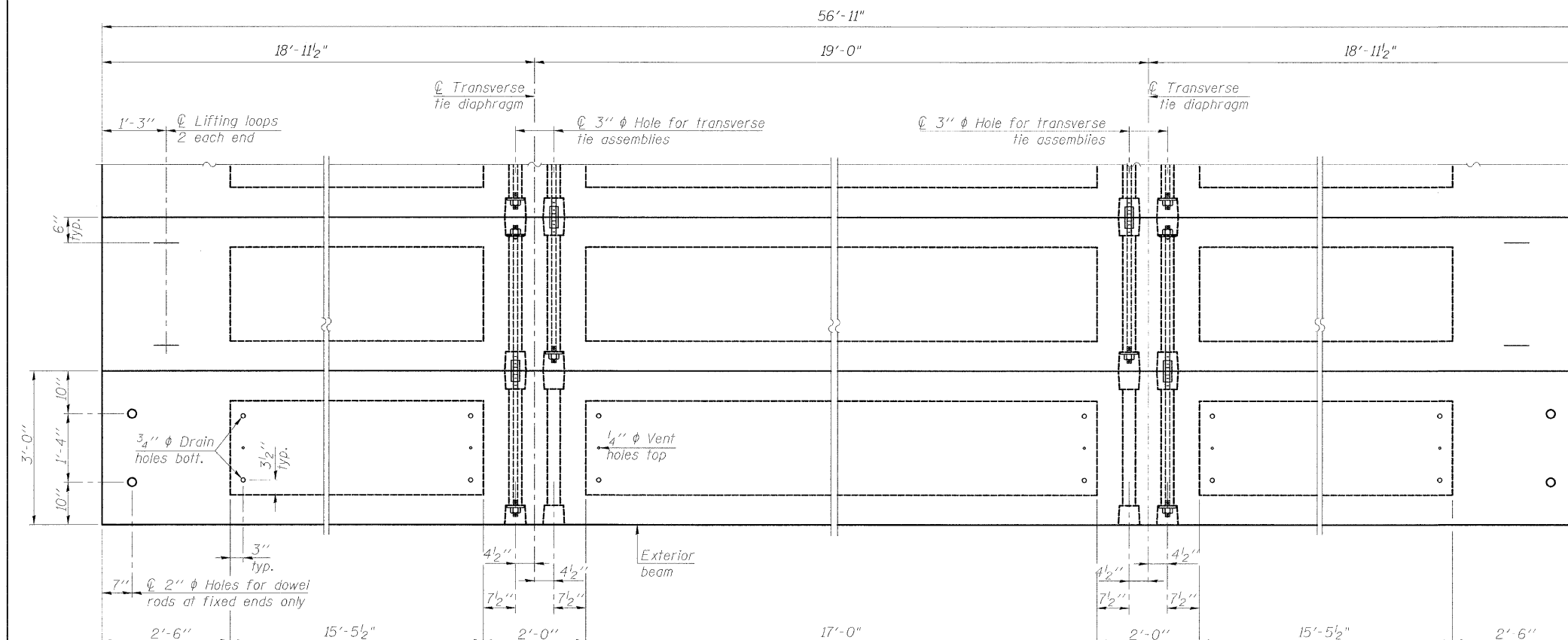
BAR A₁(E)



LIFTING LOOP DETAIL

BILL OF MATERIAL

Precast Prestressed Conc. Deck Bms. (21" depth)	Sq. Ft.	1366
-------------------------------------------------	---------	------



PLAN VIEW - SPAN 2

NOTES

Note: Connect beams in pairs with the transverse tie configuration shown.

Prestressing steel shall be uncoated high strength, low relaxation 7-wire strand, Grade 270. The nominal diameter shall be 1/2" and the nominal cross-sectional area shall be 0.153 sq. in. The 1" rods in the transverse tie assembly shall be tightened to a snug fit and the threads set. Pockets on exterior faces of bridge shall be filled with grout after transverse tie assembly is in place. Reinforcement bars shall conform to ASTM A 706, Grade 60. (See Special Provisions). Two 1/8" fabric adjusting shims of the dimensions of the exterior bearing pad shall be provided for each bearing pad location. A minimum 2 1/2" diameter lifting pin shall be used to engage the lifting loops during handling. Corrosion Inhibitor, per Article 1020.05(b)(12) and 1021.06 of the Standard Specifications, shall be used in the concrete for precast prestressed concrete deck beams. Compressive strength of prestressed concrete, f'c, shall be 6000 psi. Compressive strength of prestressed concrete at release, f'ci, shall be 5000 psi.

**21" X 36" PPC DECK BEAM DETAILS
SPAN 2**

PD-2136-OD

11-1-09

FILE NAME =	USER NAME = #USER#	DESIGNED -	REVISIONS -
		DRAWN -	REVISIONS -
		CHECKED -	REVISIONS -
		DATE -	REVISIONS -



Allen Henderson & Associates, Inc.
Civil and Structural Engineers Springfield, IL.
62703 Phone: (217)544-8033 IL Design Firm
No. 184-001907

SUPERSTRUCTURE		T.R. RTE.	SECTION	COUNTY	TOTAL SHEETS	SHEET NO.
SPAN 2		159	07-18118-00-BR	SHELBY	19	9
SCALE: NONE		SHEET NO. 9 OF 19 SHEETS		STA. 12+75.00 TO STA. 18+75.00		S.N. 087-3567
						CONTRACT NO. 95626
						FED. ROAD DIST. NO. - ILLINOIS FED. AID PROJECT

#FILE#