

ROUTE	SECTION	COUNTY	TOTAL SHEETS	SHEET NO.
F.A.S. 706	07-00106-02-FP	RICHLAND	9	1
CONTRACT NO. 95627			ILLINOIS	

STATE OF ILLINOIS
DEPARTMENT OF TRANSPORTATION
DIVISION OF HIGHWAYS
PLANS FOR PROPOSED
FEDERAL AID SECONDARY PROJECT
TRUCK ACCESS ROUTE PROGRAM

RICHLAND COUNTY SECTION 07-00106-02-FP
F.A.S. 706 COUNTY HIGHWAY 9
JOB NO. C-97-072-10
PROJECT NO. RS-0706(135)

R 9 E

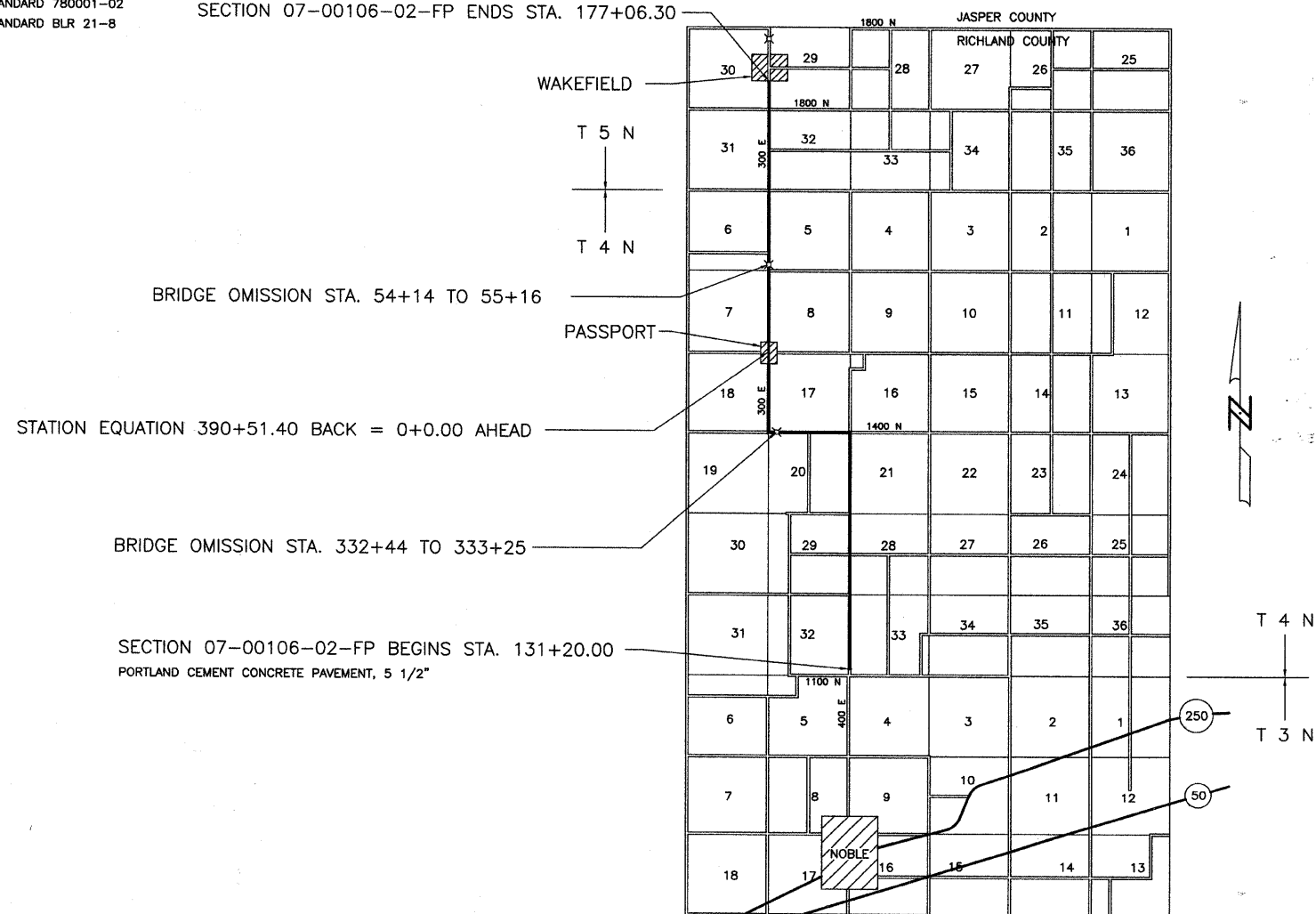
INDEX OF SHEETS

SHEET	ITEM
1	COVER SHEET
2	SUMMARY OF QUANTITIES / TYPICAL SECTIONS
3	SURFACE REMOVAL / PCC PAVEMENT DETAILS
4-5	INTERSECTION DETAILS
6	ENTRANCE DETAILS
7	SIDE ROAD APPROACH DETAILS
8-9	TRAFFIC CONTROL PLAN

STANDARD DRAWINGS

- STANDARD 000001-05
- STANDARD 542301-02
- STANDARD 542306-02
- STANDARD 542311-01
- STANDARD 542601-02
- STANDARD 542606-01
- STANDARD 701901-01
- STANDARD 780001-02
- STANDARD BLR 21-8

SECTION 07-00106-02-FP ENDS STA. 177+06.30



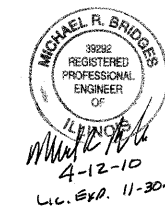
GROSS LENGTH SECTION 07-00106-02-FP = 43,637.7 Ft. = 8.265 Mi.
OMISSION LENGTH SECTION 07-00106-02-FP = 183.0 Ft. = 0.035 Mi.
NET LENGTH SECTION 07-00106-02-FP = 43,454.7 Ft. = 8.230 Mi.

CONTRACT NO. 95627

RURAL MAJOR COLLECTOR
ADT = 550
DESIGN SPEED = 50 MPH

Joint Utility Locating Information for Excavators
JULIE 1-800-892-0123

RICHLAND COUNTY HIGHWAY DEPARTMENT
4334 N. MERIDIAN ROAD
OLNEY, ILLINOIS 62450



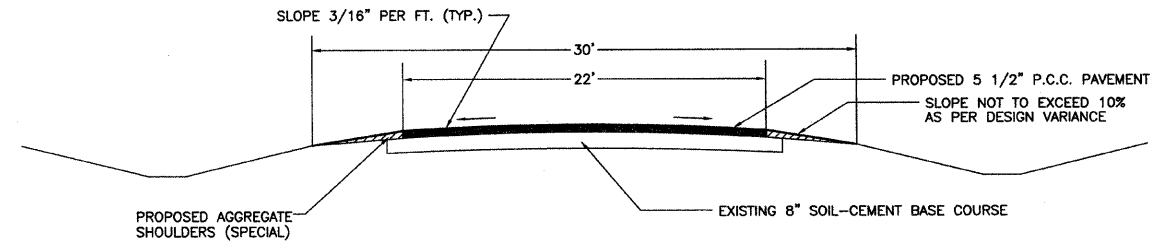
CHARLESTON ENGINEERING INC.
105 N. KITCHELL
P.O. BOX 397
OLNEY, ILLINOIS 62450
PH. 618-392-0736

APPROVED April 13 2010
Jenny A. Colewell, P.E.
COUNTY ENGINEER

PASSED April 16 2010
Maureen E. Costello
DISTRICT SEVEN ENGINEER OF
LOCAL ROADS AND STREETS

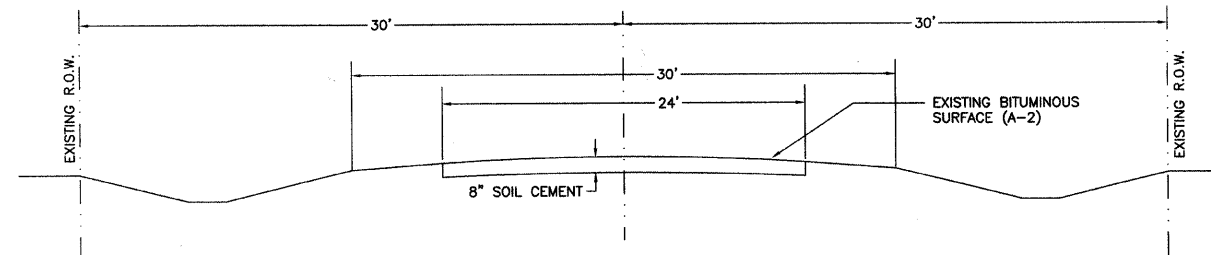
Releasing For
Bid Based on
Limited Review
April 16 2010
Roger L. Danabell
DEPUTY DIRECTOR OF HIGHWAYS
REGION FOUR ENGINEER

TYPICAL SECTION OF PROPOSED IMPROVEMENT



STA. 131+20.0 TO STA. 390+51.40
STA. 0+00.0 TO STA. 177+06.30

TYPICAL SECTION OF EXISTING ROAD



STA. 131+20.0 TO STA. 390+51.40
STA. 0+00.0 TO STA. 177+06.30

SUMMARY OF QUANTITIES			
CODE NO.	ITEM	UNIT	QUANTITY
20800150	TRENCH BACKFILL	CU YD	32
25001000	SEEDING, CLASS 2 (SPECIAL)	ACRE	0.4
28102600	STONE RIPRAP DITCH	TON	20
48102100	AGGREGATE WEDGE SHOULDER, TYPE B	TON	1000
50105220	PIPE CULVERT REMOVAL	FOOT	50
54001007	BOX CULVERT END SECTION, CULVERT NO. 7	EACH	1
54001008	BOX CULVERT END SECTION, CULVERT NO. 8	EACH	1
54001010	BOX CULVERT END SECTION, CULVERT NO. 10	EACH	1
54001012	BOX CULVERT END SECTION, CULVERT NO. 12	EACH	1
54010802	PRECAST CONCRETE BOX CULVERT 8' X 2'	FOOT	104
542A0217	PIPE CULVERTS, CLASS A, TYPE 1 12"	FOOT	24
542A0220	PIPE CULVERTS, CLASS A, TYPE 1 15"	FOOT	56
542A0223	PIPE CULVERTS, CLASS A, TYPE 1 18"	FOOT	16
542A0235	PIPE CULVERTS, CLASS A, TYPE 1 30"	FOOT	16
542A0241	PIPE CULVERTS, CLASS A, TYPE 1 36"	FOOT	8
542A5491	PIPE CULVERTS, CLASS A, TYPE 1 EQUIVALENT ROUND-SIZE 36"	FOOT	72
54213657	PRECAST REINFORCED CONCRETE FLARED END SECTIONS 12"	EACH	2
54213660	PRECAST REINFORCED CONCRETE FLARED END SECTIONS 15"	EACH	4
54213663	PRECAST REINFORCED CONCRETE FLARED END SECTIONS 18"	EACH	1
54213675	PRECAST REINFORCED CONCRETE FLARED END SECTIONS 30"	EACH	2
54213681	PRECAST REINFORCED CONCRETE FLARED END SECTIONS 36"	EACH	1
54214521	PRECAST REINFORCED CONCRETE FLARED END SECTIONS, EQUIVALENT ROUND-SIZE 36"	EACH	2
54217693	REINFORCED CONCRETE PIPE TEE, 30" PIPE WITH 30" RISER	EACH	1
54217703	REINFORCED CONCRETE PIPE TEE, 36" PIPE WITH 30" RISER	EACH	1
54247150	GRATING FOR CONCRETE FLARED END SECTION 30"	EACH	2
54247170	GRATING FOR CONCRETE FLARED END SECTION 36"	EACH	1
54248160	GRATING FOR CONCRETE FLARED END SECTION EQUIVALENT ROUND-SIZE 36"	EACH	2
54248510	CONCRETE COLLAR	CU YD	0.4
59300100	CONTROLLED LOW-STRENGTH MATERIAL	CU YD	75
67100100	MOBILIZATION	L. SUM	1
70103700	TRAFFIC CONTROL COMPLETE	L. SUM	1
* 78001110	PAINT PAVEMENT MARKING - LINE 4"	FOOT	128,630
X0321473	PIPE ELBOW 15"	EACH	2
X0321475	PIPE ELBOW 12"	EACH	2
X0325227	REINFORCED CONCRETE ELLIPTICAL PIPE TEE, SPAN 45, RISE 29 WITH 15" RISER	EACH	1
X0326914	REINFORCED CONCRETE ELLIPTICAL PIPE TEE, SPAN 45, RISE 29 WITH 18" RISER	EACH	1
X0326915	GRATING FOR PRECAST CONCRETE BOX CULVERT END SECTION 8' X 2'	EACH	4
X0545005	BOX CULVERT REMOVAL	L. SUM	1
X7240500	RELOCATE EXISTING SIGNS	EACH	4
XX005348	AGGREGATE SHOULDERS (SPECIAL)	FOOT	85,704
XX007371	PORTLAND CEMENT CONCRETE PAVEMENT, FURNISHED	CU YD	16,970
XX007375	PORTLAND CEMENT CONCRETE PAVEMENT, 8" PLACEMENT	SQ YD	3,220
XX008374	PORTLAND CEMENT CONCRETE PAVEMENT, 5 1/2" PLACEMENT	SQ YD	105,490
XX008375	SURFACE REMOVAL 1", SPECIAL	SQ YD	115,872

* SPECIALLY ITEMS

PAINT PAVEMENT MARKING LINE 4"

CENTERLINE STRIPE	
Sta. 131+20 to 177+03	= 9,568 Foot
EDGE LINE	
Rt. & Lt. Sta. 131+20 to 177+03	= 86,182 Foot
NO PASSING ZONE STRIPING - NORTHBOUND	
Rt. Sta. 147+50 to 174+40	= 2,690 Foot
Rt. Sta. 185+75 to 192+35	= 660 Foot
Rt. Sta. 201+85 to 214+15	= 1,230 Foot
Lt. Sta. 223+70 to 235+15	= 1,145 Foot
Lt. Sta. 245+80 to 258+85	= 1,305 Foot
Lt. Sta. 283+50 to 296+95	= 1,345 Foot
Lt. Sta. 319+35 to 351+00	= 3,165 Foot
Lt. Sta. 358+10 to 383+50	= 2,540 Foot
Lt. Sta. 9+30 to 13+90	= 460 Foot
Lt. Sta. 44+00 to 55+05	= 1,105 Foot
Lt. Sta. 71+40 to 82+85	= 1,145 Foot
Total = 16,790 Foot	
NO PASSING ZONE STRIPING - SOUTHBOUND	
Lt. Sta. 129+25 to 156+15	= 2,690 Foot
Lt. Sta. 167+75 to 174+40	= 665 Foot
Lt. Sta. 183+35 to 195+70	= 1,235 Foot
Lt. Sta. 205+35 to 216+85	= 1,150 Foot
Lt. Sta. 227+80 to 240+55	= 1,275 Foot
Lt. Sta. 265+05 to 277+15	= 1,210 Foot
Lt. Sta. 301+15 to 325+00	= 2,385 Foot
Lt. Sta. 340+20 to 365+25	= 2,505 Foot
Lt. Sta. 381+75 to 386+25	= 450 Foot
Lt. Sta. 25+55 to 37+30	= 1,175 Foot
Lt. Sta. 54+00 to 64+75	= 1,075 Foot
Lt. Sta. 168+15 to 170+90	= 275 Foot
Total = 16,090 Foot	
TOTAL STRIPING QUANTITY	
Sta. 131+20 to 177+03	= 128,630 Foot

PAVING SCHEDULE

P.C.C. PAVEMENT 5 1/2"		
LOCATION	SQ. YD.	
Sta. 131+70 to 331+94	48,948	
Sta. 335+75 to 53+64	26,988	
Sta. 55+66 to 176+56	29,554	
Total = 105,490 S.Y.		
P.C.C. PAVEMENT 8"		
LOCATION	SQ. YD.	
Sta. 131+20 to 131+70	122.2	
Sta. 331+94 to 332+44	122.2	
Sta. 333+25 to 333+75	122.2	
Sta. 53+64 to 54+14	122.2	
Sta. 55+16 to 55+66	122.2	
Sta. 176+56 to 177+06	122.2	
Lt. Sta. 0+00	128.0	
Rt. Sta. 0+00	128.0	
Lt. Sta. 158+00	135.0	
Rt. Sta. 158+00	135.0	
Private Entrances	1,155.3	
Sideroads	805.5	
Total = 3,220 S.Y.		

NOTES

1. THE MILLINGS ON THIS PROJECT SHALL BE USED TO CONSTRUCT THE TEMPORARY PARKING AREAS, AGGREGATE SHOULDERS (SPECIAL), AND MAILBOX TURNOUTS. IF THERE ARE NOT ENOUGH MILLINGS TO COMPLETE THESE ITEMS, THEN THE SHOULDERS AND MAILBOX TURNOUTS WILL BE COMPLETED USING AGGREGATE WEDGE SHOULDER, TYPE B.

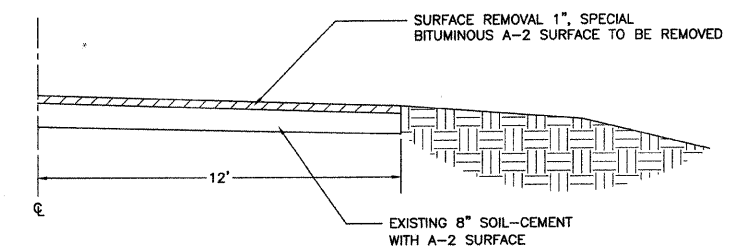
PAVEMENT DESIGN DATA

CLASS II ROAD, 80,000 POUND TRUCK ROUTE
STRUCTURAL DESIGN TRAFFIC (S.D.T.) 2021 PC = 485
SU = 50
MU = 15

MINIMUM SOIL SUPPORT: I.B.R. = 3

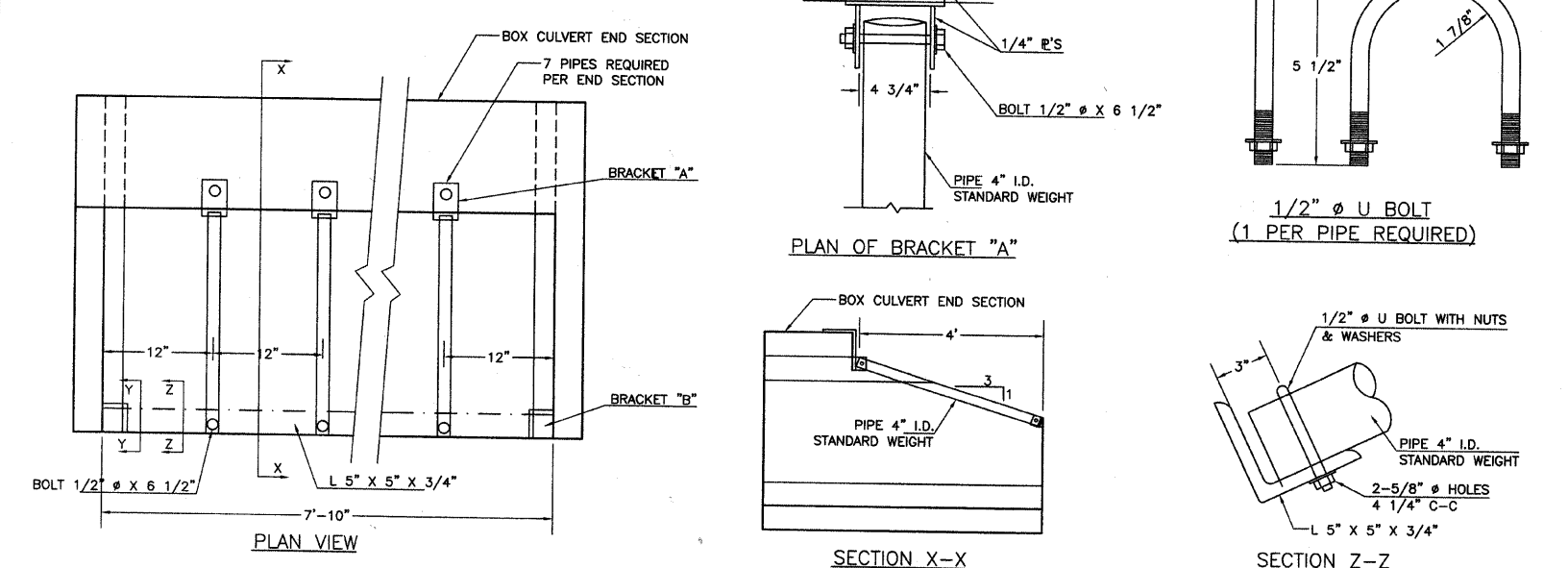
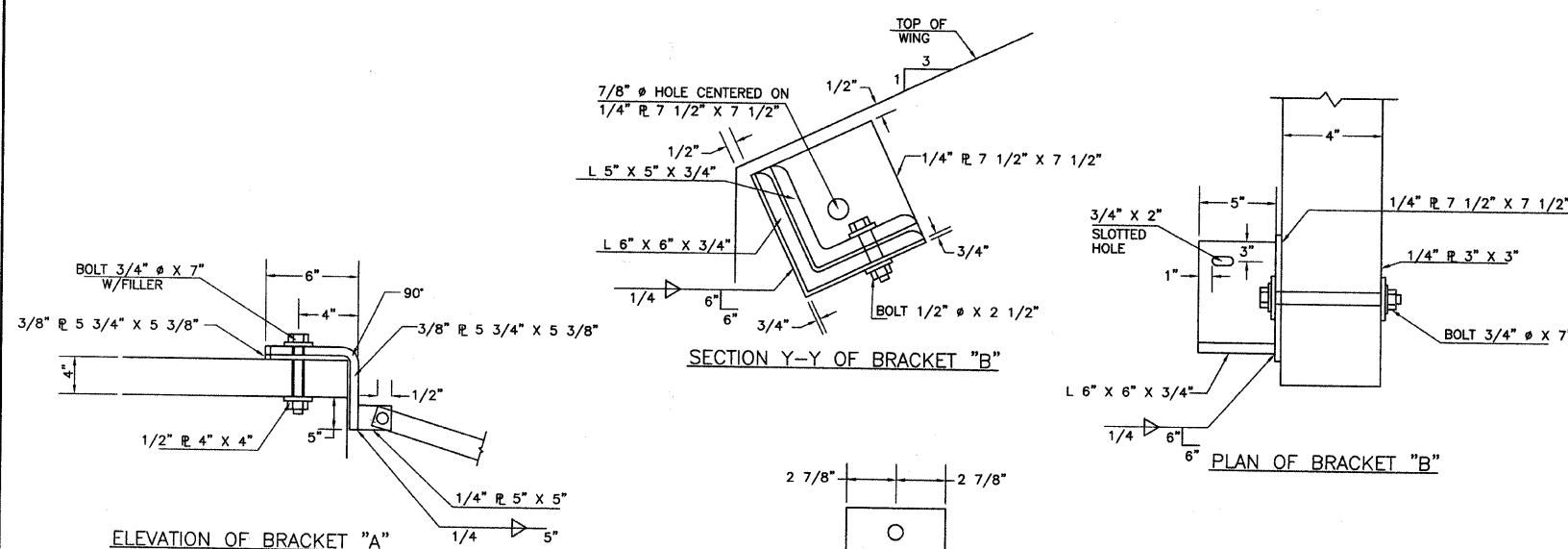
TRAFFIC FACTOR = 0.295

PAVEMENT STRUCTURE MATERIALS:
EXISTING - 8" SOIL-CEMENT BASE COURSE
PROPOSED - 5 1/2" P.C.C. PAVEMENT

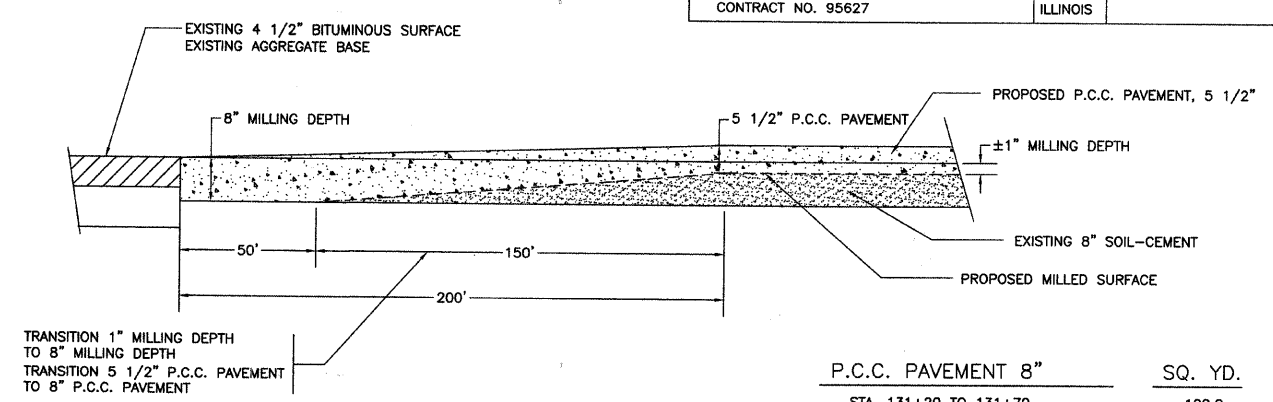
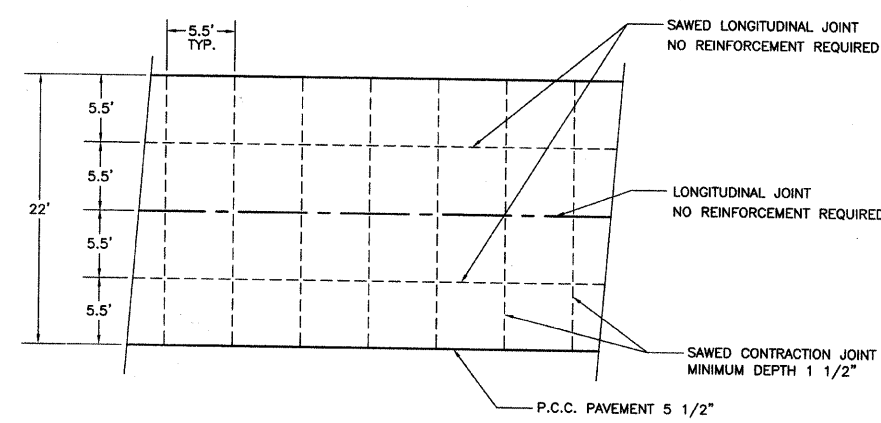


SURFACE REMOVAL TYPICAL SECTION

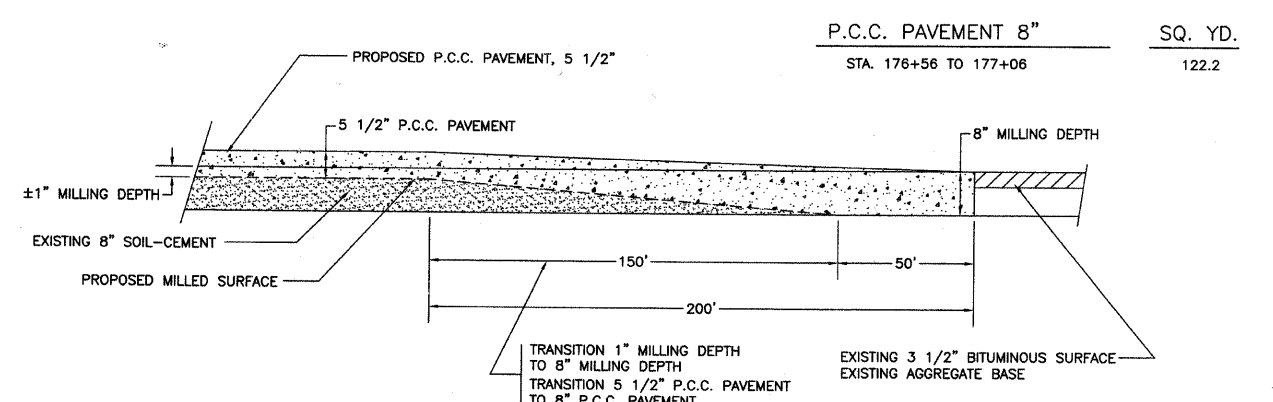
ROUTE	SECTION	COUNTY	TOTAL SHEETS	SHEET NO.
F.A.S. 706	07-00106-02-FP	RICHLAND	9	3
CONTRACT NO. 95627		ILLINOIS		



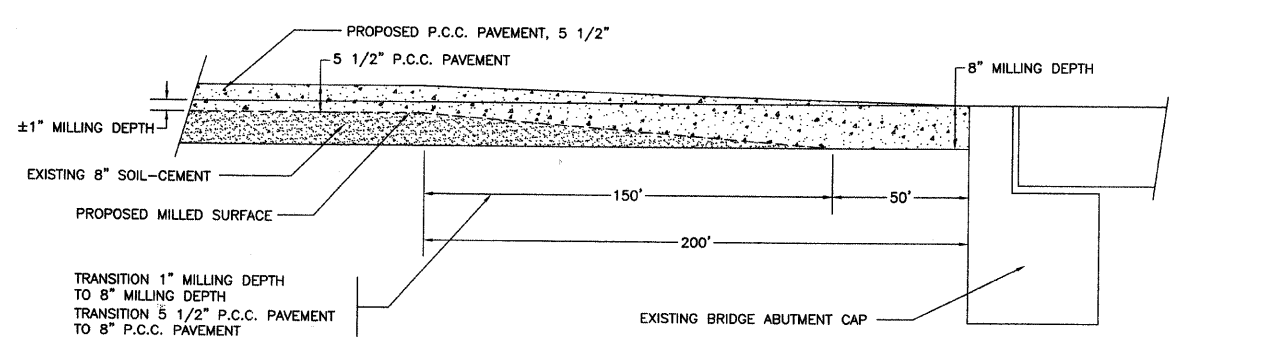
GRATING FOR BOX CULVERT END SECTION DETAILS



P.C.C. PAVEMENT 8"	SQ. YD.
STA. 131+20 TO 131+70	122.2



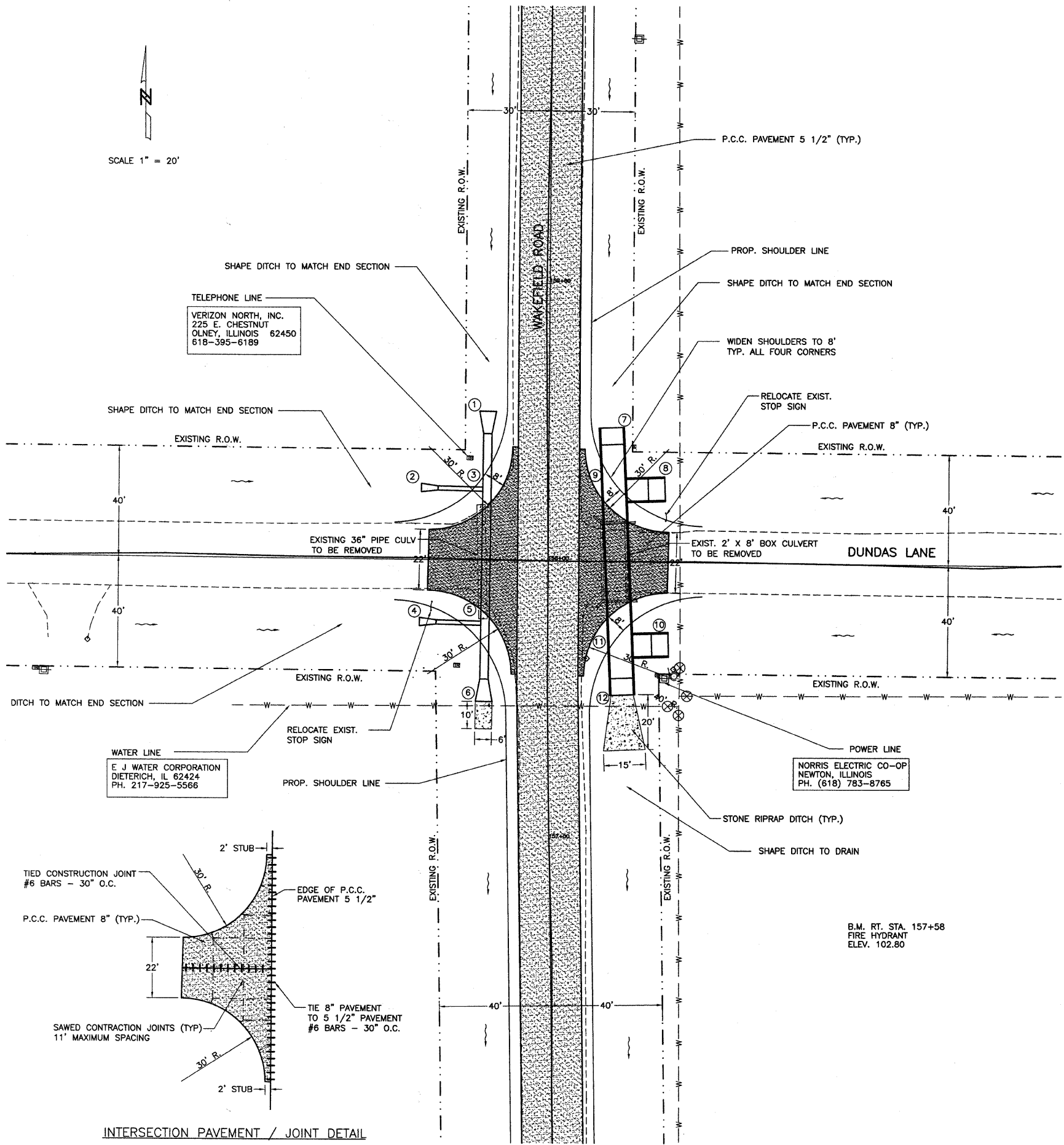
P.C.C. PAVEMENT 8"	SQ. YD.
STA. 176+56 TO 177+06	122.2



P.C.C. PAVEMENT 8"	SQ. YD.
STA. 332+80	244.4
STA. 54+65	244.4
TOTAL	488.8 SQ YD

ROUTE	SECTION	COUNTY	TOTAL SHEETS	SHEET NO.
F.A.S. 706	05-00106-01-FP	RICHLAND	9	4
CONTRACT NO. 95627		ILLINOIS		

SCALE 1" = 20'



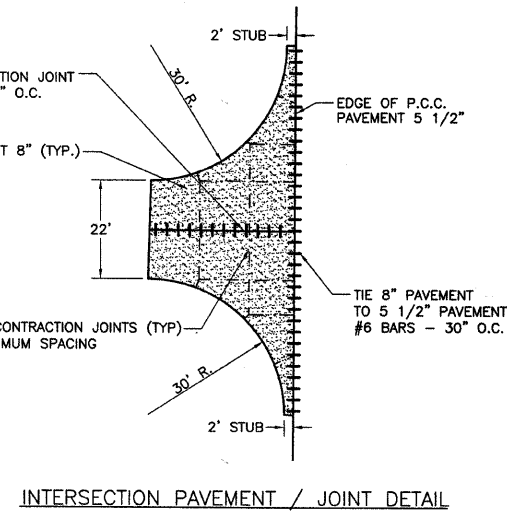
DRAINAGE STRUCTURES

NO.	DIST.	STA.	ITEM	INV.
1	22' LT.	158+54	P.R.C.F.E.S., E.R.S. 36" W/GRATING	104.80
2	46' LT.	158+26	P.R.C.F.E.S. 18"	105.50
3	22' LT.	158+26	R.C. ELL. PIPE TEE, S45, R29 18" RISER	104.55
4	46' LT.	157+77	P.R.C.F.E.S. 15"	105.10
5	23' LT.	157+77	R.C. ELL. PIPE TEE, S45, R29 15" RISER	104.45
6	23' LT.	157+50	P.R.C.F.E.S., E.R.S. 36" W/GRATING	104.40
7	22' RT.	158+48	P.B.C. END SECT. 2' X 8' W/GRATING	104.00
8	42' RT.	158+26	P.B.C. END SECT. 2' X 8' W/GRATING	104.00
9	23' RT.	158+26	P.B.C. TEE 2' X 8'	103.90
10	43' RT.	157+70	P.B.C. END SECT. 2' X 8' W/GRATING	104.00
11	26' RT.	157+70	P.B.C. TEE 2' X 8'	103.80
12	27' RT.	157+52	P.B.C. END SECT. 2' X 8' W/GRATING	103.70

PIPE CULVERTS - R.C.C.P.

LOCATION	R.C.C.P.			P.B.C. 2' X 8'	TR.B'FILL	C.L.S.M.	
	TY-1,15"	TY-1,18"	TY-1,36" E.R.S.				
1 TO 3			16		3.0	8	
2 TO 3		16			2.2		
3 TO 5			40		4.4		
4 TO 5	16				3.4		
5 TO 6			16		6.2		
7 TO 9				16	8		
8 TO 9				56	8		
9 TO 11				8	56		
10 TO 11				16	8		
11 TO 12					16		
TOTALS	16	16	72	104	19.2		64

ITEM	UNIT	QUANTITY	C.L.S.M. CU.YD.
PIPE CULVERT REMOVAL	FOOT	42	11
STONE RIPRAP DITCH	TON	15	
RELOCATE EXISTING SIGNS	EACH	2	
BOX CULVERT REMOVAL	L SUM	1	
SEEDING CLASS 2 (SPL.)	ACRE	0.25	
P.C.C. PAVEMENT 8"	SQ. YD.	135	
		135	
TOTAL	SQ. YD.	270	



B.M. RT. STA. 157+58
FIRE HYDRANT
ELEV. 102.80

ROUTE	SECTION	COUNTY	TOTAL SHEETS	SHEET NO.
F.A.S. 706	05-00106-01-FP	RICHLAND	9	5
CONTRACT NO. 95627		ILLINOIS		

DRAINAGE STRUCTURES

NO.	DIST.	STA.	ITEM	INV.
1	22' LT.	0+42	P.R.C.F.E.S. 30" W/GRATING	85.80
2	22' LT.	0+18	R.C. PIPE TEE, 30" P. 30" R	84.50
3	48' LT.	0+16	P.R.C.F.E.S. 15"	87.20
4	26' LT.	0+18	CONCRETE COLLAR	-
5	18' LT.	0+18	CONCRETE COLLAR	-
6	50' LT.	390+39	P.R.C.F.E.S. 15"	87.50
7	32' LT.	390+39	R.C. PIPE ELBOW 15" 45'	87.36
8	21' LT.	390+27	R.C. PIPE ELBOW 15" 45'	87.28
9	21' LT.	390+09	P.R.C.F.E.S. 15"	87.10
10	22' RT.	0+50	P.R.C.F.E.S. 30" W/GRATING	85.80
11	22' RT.	0+18	R.C. PIPE TEE, 36" P. 30" R	84.20
12	18' RT.	0+18	CONCRETE COLLAR	-
13	48' RT.	0+14	P.R.C.F.E.S. 36" W/GRATING	84.00
14	21' RT.	390+07	P.R.C.F.E.S. 12"	87.80
15	21' RT.	390+24	R.C. PIPE ELBOW 12" 45'	87.00
16	32' RT.	390+36	R.C. PIPE ELBOW 12" 45'	86.40
17	50' RT.	390+36	P.R.C.F.E.S. 12"	85.60

PIPE CULVERTS - R.C.C.P.

LOCATION	TY-1,12"	TY-1,15"	TY-1,30"	TY-1,36"	TR. B'FILL
1 TO 2			8		1.6
3 TO 2		16			1.5
6 TO 7		8			1.9
7 TO 8		8			0.6
8 TO 9			8		1.4
10 TO 12				8	1.6
11 TO 13					
14 TO 15	8				
15 TO 16	8				
16 TO 17	8				1.2
TOTALS	24	40	16	8	9.8

PIPE CULVERT REMOVAL	FOOT	TR. B'FILL CU.YD.
LT. STA. 0+18	4	1.8
RT. STA. 0+18	4	0.8
TOTAL 8 FT		TOTAL 2.2 C.Y.

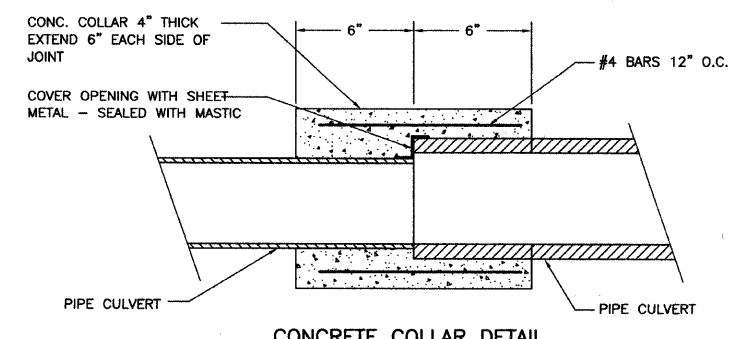
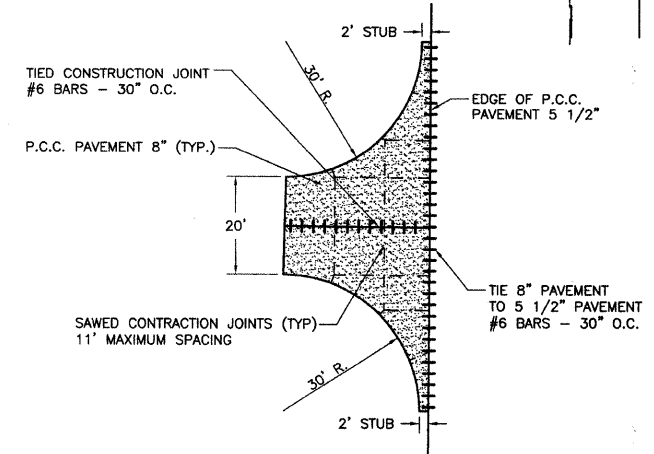
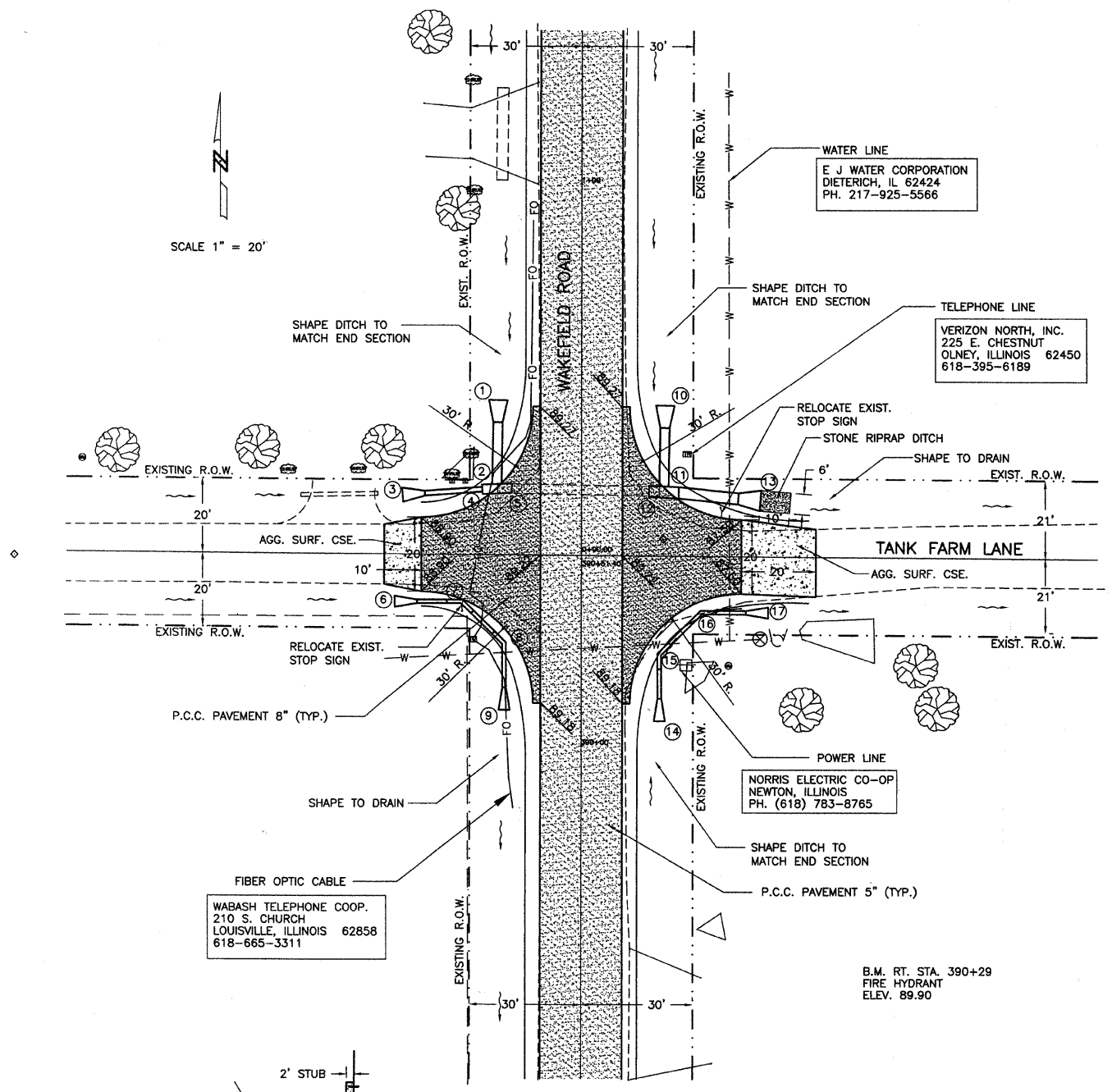
STONE RIPRAP DITCH	TON
RT. STA. 0+16	5

RELOCATE EXISTING SIGNS	EACH
LT. STA. 390+38	1
RT. STA. 0+12	1
TOTAL 2 EACH	

AGG. SURFACE CSE., TY. = B	TON
LT. & RT. STA. 0+00	8

SEEDING CLASS 2 (SPL.)	ACRE
STA. 0+00	0.15

P.C.C. PAVEMENT 8"	SQ. YD.
LT. STA. 0+00	128
RT. STA. 0+00	128
TOTAL 256 SQ YD	

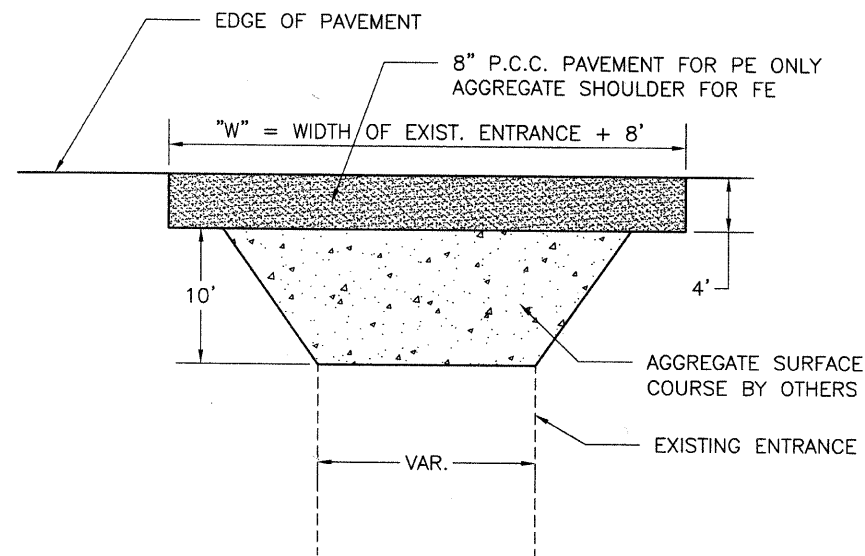


INTERSECTION DETAIL / JOINT DETAIL

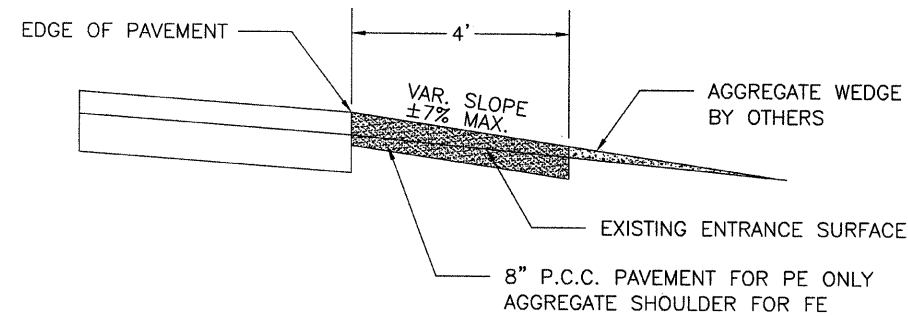
CONCRETE COLLAR DETAIL

ENTRANCE SCHEDULE

STATION	SIDE	TYPE	SQ. YD. PCC PVT 8"	STATION	SIDE	TYPE	SQ. YD. PCC PVT 8"	STATION	SIDE	TYPE	SQ. YD. PCC PVT 8"
132+30	LT	FE	-	269+16	RT	FE	-	12+10	LT	PE	14.7
135+24	RT	PE	23.6	269+45	LT	FE	-	12+18	RT	PE	14.7
137+38	LT	FE	-	280+07	RT	FE	-	13+20	LT	PE	16.9
145+50	RT	PE	25.8	289+83	LT	FE	-	17+84	LT	PE	25.8
145+73	LT	FE	-	289+87	RT	PE	16.9	18+56	LT	PE	19.1
148+33	LT	FE	-	296+77	RT	PE	14.7	18+92	RT	FE	-
151+92	RT	PE	30.2	296+92	LT	PE	19.1	19+30	LT	FE	-
156+11	RT	PE	25.8	300+00	RT	FE	-	26+71	LT	FE	-
156+75	LT	FE	-	301+76	RT	PE	23.6	26+71	RT	FE	-
171+23	LT	FE	-	309+25	RT	FE	-	40+14	RT	FE	-
172+27	RT	FE	-	312+77	RT	PE	21.3	40+32	LT	FE	-
175+41	RT	FE	-	313+81	LT	FE	-	45+54	RT	PE	25.8
178+11	RT	PE	24.9	316+59	RT	FE	-	46+43	LT	FE	-
184+13	RT	PE	21.3	321+82	RT	PE	36.9	53+46	LT	FE	-
187+07	LT	PE	16.0	322+58	RT	FE	-	61+70	RT	FE	-
188+90	LT	PE	14.7	323+26	LT	PE	25.8	73+28	RT	FE	-
191+25	RT	PE	21.3	323+50	RT	PE	23.6	73+28	LT	FE	-
195+55	LT	FE	-	324+50	LT	FE	-	76+65	RT	PE	21.3
197+34	LT	PE	21.3	325+28	RT	FE	-	79+74	RT	PE	14.7
199+20	RT	FE	-	339+37	RT	FE	-	80+39	RT	PE	25.8
199+56	RT	PE	16.9	340+88	RT	FE	-	80+71	LT	PE	16.9
206+88	RT	FE	-	347+06	RT	FE	-	81+19	RT	PE	23.6
213+43	RT	PE	18.2	350+05	LT	FE	-	85+25	RT	FE	-
213+80	LT	FE	-	363+59	RT	FE	-	85+41	LT	FE	-
215+19	LT	PE	16.9	363+59	LT	FE	-	123+97	LT	FE	-
221+13	LT	FE	-	369+77	LT	FE	-	130+56	LT	FE	-
221+90	RT	FE	-	372+39	RT	PE	21.3	138+15	RT	PE	16.9
223+06	RT	PE	14.7	377+84	LT	PE	21.3	138+24	LT	PE	12.4
223+65	RT	PE	25.8	387+48	LT	PE	16.9	139+37	LT	FE	-
235+38	RT	FE	-	387+71	RT	PE	28.0	140+16	RT	PE	25.8
236+77	LT	FE	-	388+48	LT	PE	21.3	140+41	LT	PE	25.8
243+48	LT	PE	23.6	388+75	RT	PE	16.9	141+48	LT	PE	19.6
245+42	RT	FE	-	389+27	RT	PE	25.8	144+62	RT	FE	-
253+22	LT	FE	-	1+13 *	LT	PE	16.9	146+81	LT	FE	-
254+86	LT	PE	16.9	1+88	LT	PE	16.0	168+69	RT	PE	21.3
255+28	LT	PE	16.9	2+17	RT	FE	-	171+02	LT	FE	-
255+45	RT	FE	-	3+42	LT	FE	-	171+12	RT	FE	-
256+07	RT	FE	-	10+56	LT	PE	23.6	175+43	LT	PE	20.4
262+79	LT	FE	-	11+67	LT	PE	16.9	176+55	LT	PE	12.4
TOTAL S.Y.											1155.3
PCC PVT 8"											



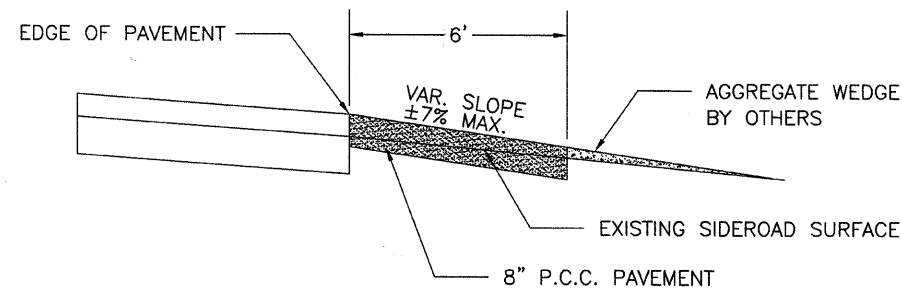
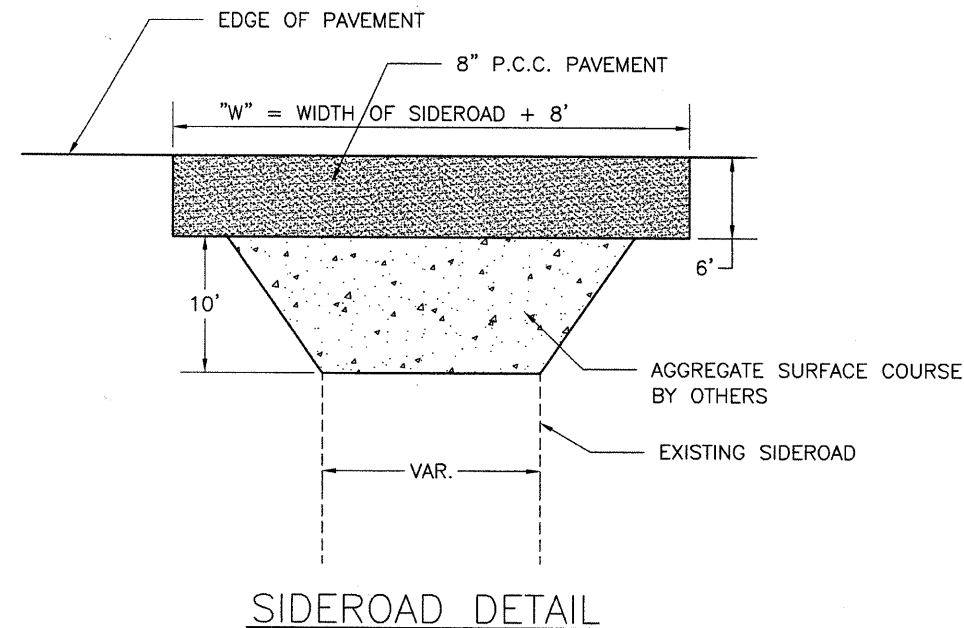
ENTRANCE DETAIL



ENTRANCE CROSS SECTION

*STATIONING STARTS 0+00 AGAIN AT 1500 N WHERE STATION EQUATION STA. 390+51.40 BACK = STA. 0+00 AHEAD

ROUTE	SECTION	COUNTY	TOTAL SHEETS	SHEET NO.
F.A.S. 706	07-00106-02-FP	RICHLAND	9	7
CONTRACT NO. 95627		ILLINOIS		



SIDEROAD CROSS SECTION

TEMPORARY PARKING SCHEDULE					
STATION	SIDE	TONS MILLINGS	STATION	SIDE	TONS MILLINGS
145+50	RT	11.1	301+76	RT	11.1
151+92	RT	11.1	312+77	RT	11.1
156+11	RT	11.1	321+82	RT	11.1
178+11	RT	11.1	372+39	RT	11.1
184+13	RT	11.1	377+84	LT	11.1
188+90	LT	11.1	387+48	LT	11.1
191+25	RT	11.1	389+27	RT	11.1
197+34	LT	11.1	1+13 *	LT	11.1
199+56	RT	11.1	11+67	LT	11.1
213+43	RT	11.1	12+18	RT	11.1
215+19	LT	11.1	45+54	RT	11.1
223+06	RT	11.1	79+74	RT	11.1
243+48	LT	11.1	81+19	RT	11.1
255+28	LT	11.1	138+15	RT	11.1
289+87	RT	11.1	175+43	LT	11.1
TOTAL TONS MILLINGS					333.0

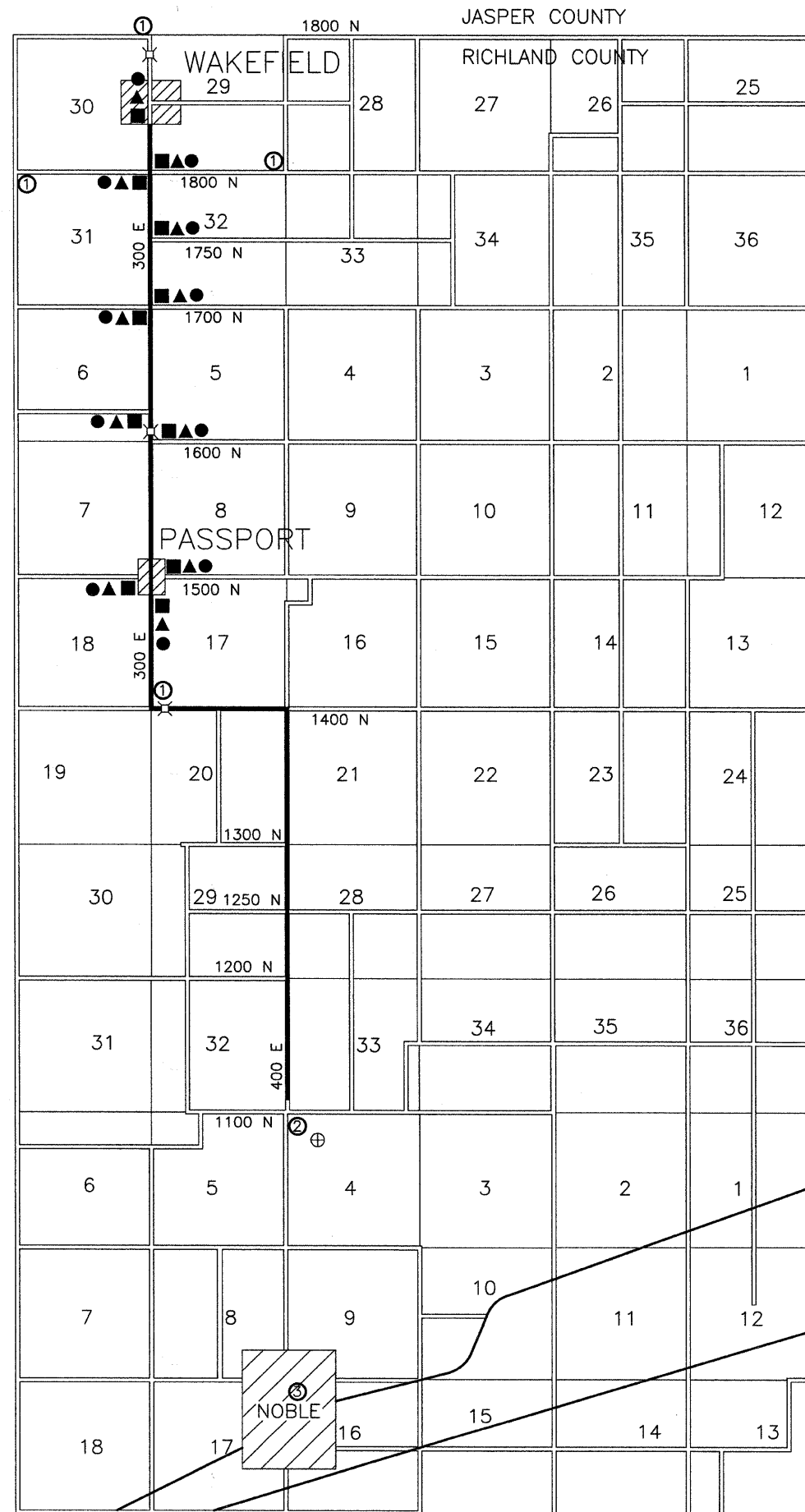
SIDE ROAD APPROACHES				QUANTITY
STATION	SIDE	NAME	DESCRIPTION	SQ. YD. PCC PVT 8"
162+00	LT	HAZLEWOOD LANE	1175N / 400E	28.7
175+40	LT	SEVEN HILLS LANE	1200N / 400E	64.0
202+20	LT	PLEASANT RIDGE LANE	1250N / 400E	32.0
202+20	RT	PLEASANT RIDGE LANE	1250N / 400E	55.3
228+65	LT	BRANCH WOOD LANE	1300N / 400E	42.0
262+71	RT	DEER FARM LANE	1400N / 400E	82.0
262+71	RT	PASSPORT ROAD	1400N / 400E	72.0
309+68.5	LT	PINKERTON ROAD	1400N / 350E	38.7
336+66	LT	WAKEFIELD ROAD	1400N / 300E	58.7
336+66	LT	DEER FARM LANE	1400N / 300E	78.7
53+65 *	RT	MT. GILEAD LANE	1600N / 300E	55.3
66+84	LT	MASSAC LANE	1625N / 300E	58.7
104+50	LT	HURRICANE LANE	1700N / 300E	38.7
104+50	RT	HURRICANE LANE	1700N / 300E	58.7
131+18	RT	HEART GROVE LANE	1750N / 300E	42.0
TOTAL S.Y. PCC PVT 8"				805.5

MAILBOX TURNOUT SCHEDULE					
STATION	SIDE	TONS	STATION	SIDE	TONS
145+50	RT	4.0	301+76	RT	4.0
151+92	RT	4.0	312+77	RT	4.0
156+11	RT	4.0	321+82	RT	4.0
178+11	RT	4.0	372+39	LT	4.0
184+13	RT	4.0	377+84	LT	4.0
188+90	RT	4.0	387+48	LT	4.0
191+25	RT	4.0	388+75	LT	4.0
197+34	RT	4.0	1+13 *	RT	4.0
199+56	RT	4.0	12+10	RT	4.0
213+43	RT	4.0	45+54	RT	4.0
215+19	LT	4.0	79+74	LT	4.0
223+06	RT	4.0	81+19	LT	4.0
243+48	RT	4.0	138+15	RT	4.0
254+86	RT	4.0	176+55	LT	4.0
289+87	RT	4.0	TOTAL TONS		116.0

THIS MATERIAL SHALL BE AGGREGATE SHOULDERS (SPECIAL). IF THERE ARE NOT ENOUGH MILLINGS TO COMPLETE THE WORK THEN AGGREGATE WEDGE SHOULDER, TYPE B SHALL BE USED TO COMPLETE THE WORK.

*STATIONING STARTS 0+00 AGAIN AT 1500 N WHERE STATION EQUATION STA. 390+51.40 BACK = STA. 0+00 AHEAD

ROUTE	SECTION	COUNTY	TOTAL SHEETS	SHEET NO.
F.A.S. 706	07-00106-02-FP	RICHLAND	9	8
CONTRACT NO. 95627		ILLINOIS		



LEGEND

- 2- TYPE III BARRICADES WITH ROAD CLOSED
- ▲ ROAD CLOSED 500 FEET
- ROAD CLOSED AHEAD
- ① TYPE III BARRICADE W/ R11-3 SIGN
ROAD CLOSED 1 MILE AHEAD
LOCAL TRAFFIC ONLY
- ② TYPE III BARRICADE W/ R11-3 SIGN
ROAD CLOSED 5 MILES AHEAD
LOCAL TRAFFIC ONLY
- ③ TYPE III BARRICADE W/ R11-3 SIGN
ROAD CLOSED 7 MILES AHEAD
LOCAL TRAFFIC ONLY
- ⊕ COUNTY STOCKPILE

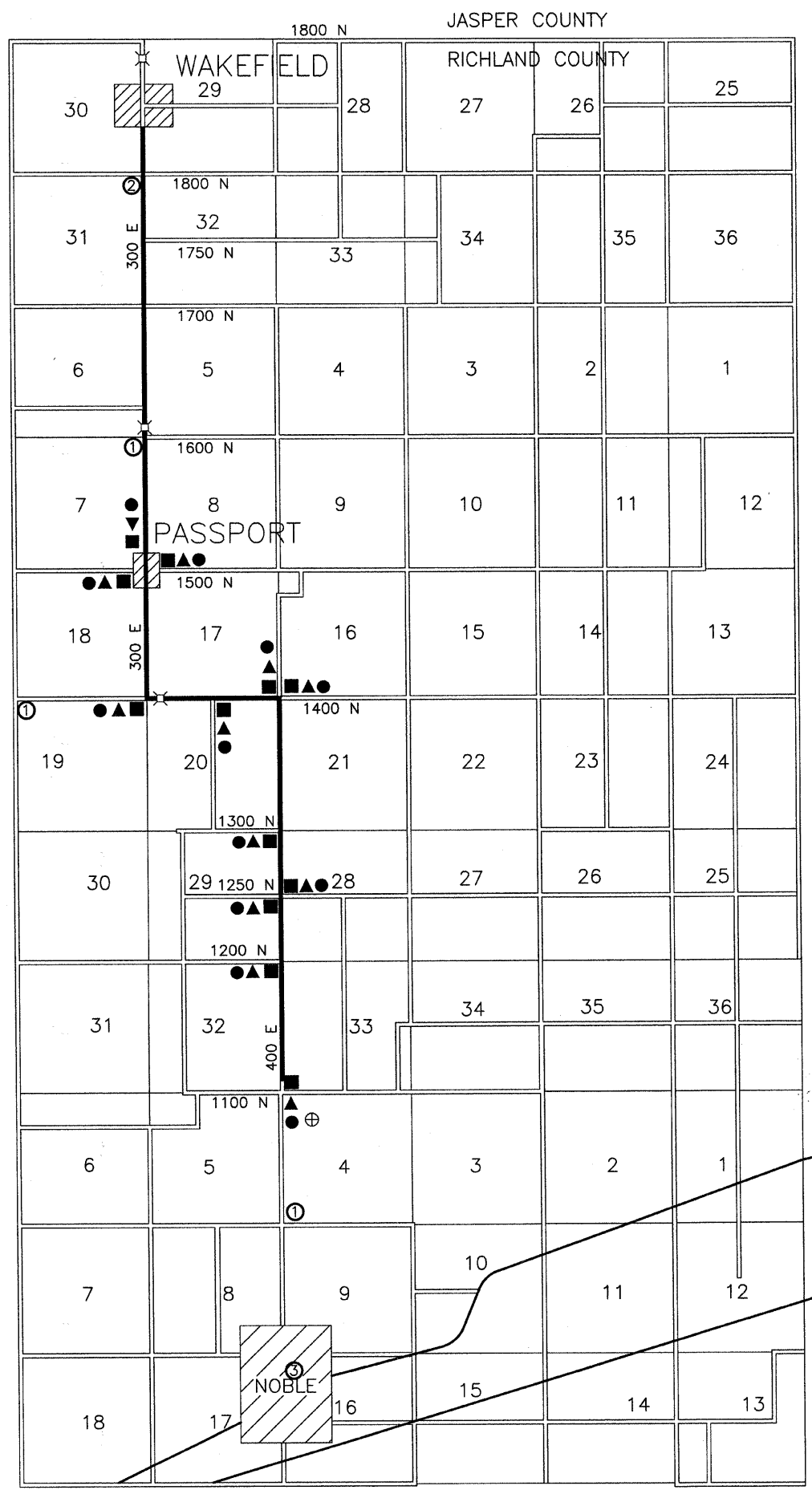
TRAFFIC CONTROL PLAN

PHASE 1

250

50

ROUTE	SECTION	COUNTY	TOTAL SHEETS	SHEET NO.
F.A.S. 706	07-00106-02-FP	RICHLAND	9	9
CONTRACT NO. 95627		ILLINOIS		



LEGEND

- 2- TYPE III BARRICADES WITH ROAD CLOSED
- ▲ ROAD CLOSED 500 FEET
- ROAD CLOSED AHEAD
- ① TYPE III BARRICADE W/ R11-3 SIGN
ROAD CLOSED 1 MILE AHEAD
LOCAL TRAFFIC ONLY
- ② TYPE III BARRICADE W/ R11-3 SIGN
ROAD CLOSED 3 MILES AHEAD
LOCAL TRAFFIC ONLY
- ③ TYPE III BARRICADE W/ R11-3 SIGN
ROAD CLOSED 2 MILES AHEAD
LOCAL TRAFFIC ONLY
- ⊕ COUNTY STOCKPILE

TRAFFIC CONTROL PLAN

PHASE 2

250

50