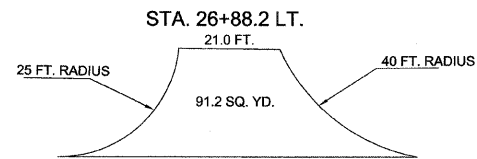


SECTION	COUNTY	TOTAL SHEETS	SHEET NO.
08-00119-00-FP	WAYNE	23	5
PAPERTOWN ROAD			
CONTRACT #: 95632			
PLAN SHEET			

P.I. STA. 27+11.36

$\Delta = 2^{\circ}15' \text{ RT.}$
 $D = 0^{\circ}11'$
 $T = 613.64'$
 $L = 1227.27'$
 $R = 31,252.60'$
 $E = 6.09'$
 $SE = \text{NONE}$

PROCESSING SOIL CEMENT QUANTITIES



STA. 26+56 EXISTING 36"x52' CMP TO BE REMOVED (NO SALVAGE REQUIRED)

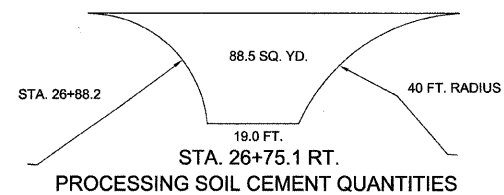
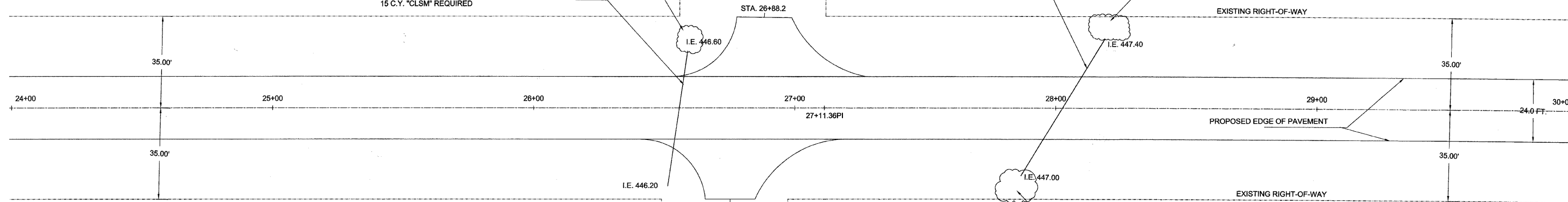
36" EQ. CLASS A, TYPE 1 48' LONG, WITH PRECAST CONCRETE FLARED END SECTIONS REQUIRED 8" 24' SKEW LT. FORWARD (SHIFT EXTRA LENGTH OF CULVERT TO THE SOUTH) 15 C.Y. "CLSM" REQUIRED

CULVERT AT STA. 26+56 LT. RIPRAP REQUIRED AT UP STREAM END (9'x10'x16") 8 TONS ALLOWED IN PROPOSAL

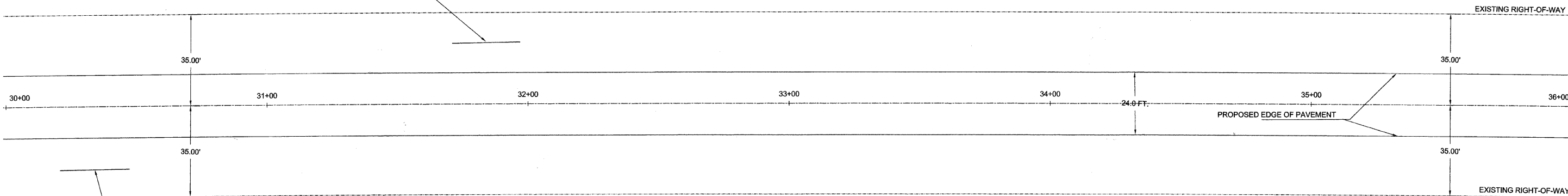
STA. 28+03 EXISTING 36"x62' CMP TO BE REMOVED (NO SALVAGE REQUIRED)

36" EQ. CLASS A, TYPE 1 48' LONG, WITH PRECAST CONCRETE FLARED END SECTIONS REQUIRED 31" SKEW LT. FORWARD 10 C.Y. "CLSM" REQUIRED

CULVERT AT STA. 28+03 LT. RIPRAP REQUIRED AT UP STREAM END (8'x12'x16") 8 TONS ALLOWED IN PROPOSAL



FIELD ENTRANCE STA. 31+84 LT. EXISTING 12"x26" CMP TO BE REMOVED (NO SALVAGE REQUIRED) 15"x30" PIPE CULVERTS, CLASS D, TYPE 1 REQUIRED (FLOWLINE TO MATCH SLOPE OF EXISTING DITCH)



STA. 30+24 RT. EXISTING 15"x26" CMP TO BE REMOVED. NO REPLACEMENT OR SALVAGE REQUIRED. EXCESS DIRT SHALL BE REMOVED AND PLACED AT OTHER PIPE CULVERTS REQUIRING ADDITIONAL MATERIAL TO CORRECT DITCH SLOPES. THE COST OF THE REMOVAL OF THE PIPE CULVERT AND THE REMOVAL OF THE EXCESS DIRT SHALL BE INCIDENTAL TO THE VARIOUS PIPE CULVERT ITEMS.

