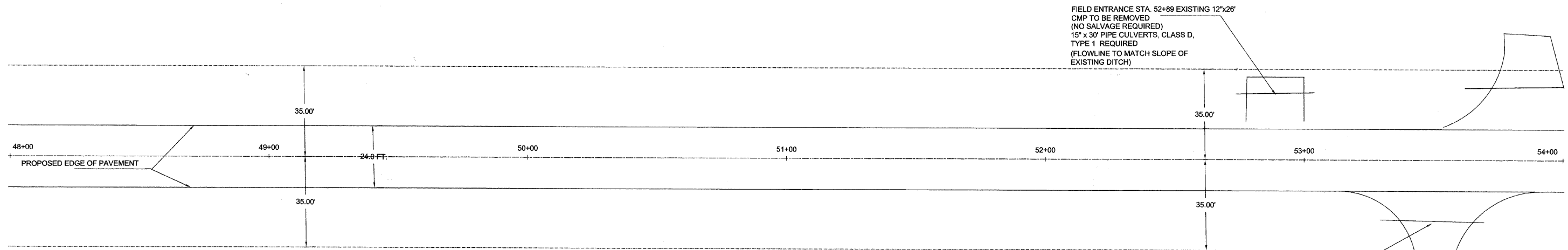
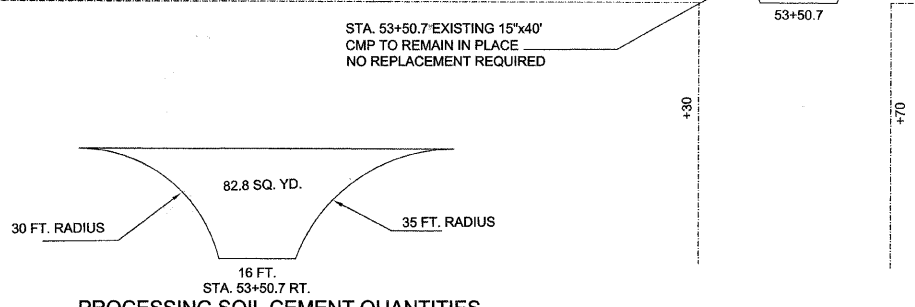


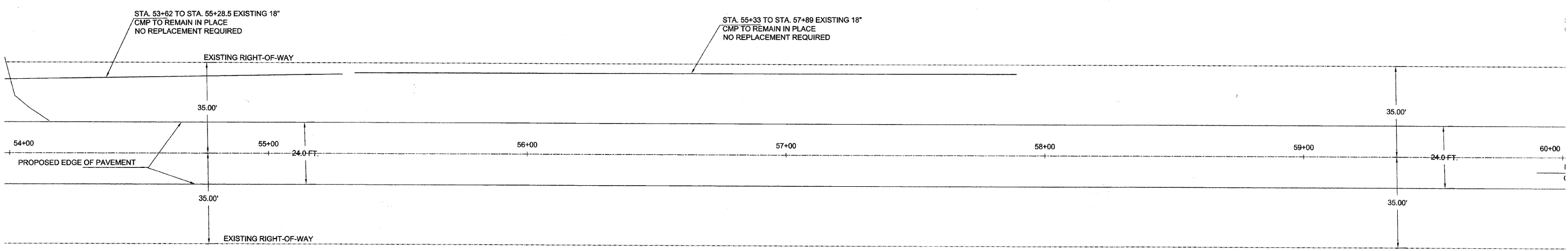
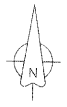
SECTION	COUNTY	TOTAL SHEETS	SHEET NO.
08-00119-00-FP	WAYNE	23	7
PAPERTOWN ROAD			
CONTRACT # 95632			
PLAN SHEET			



FIELD ENTRANCE STA. 52+89 EXISTING 12"x26"
 CMP TO BE REMOVED
 (NO SALVAGE REQUIRED)
 15' x 30' PIPE CULVERTS, CLASS D,
 TYPE 1 REQUIRED
 (FLOWLINE TO MATCH SLOPE OF
 EXISTING DITCH)



PROCESSING SOIL CEMENT QUANTITIES



STA. 53+62 TO STA. 55+28.5 EXISTING 18"
 CMP TO REMAIN IN PLACE
 NO REPLACEMENT REQUIRED

STA. 55+33 TO STA. 57+89 EXISTING 18"
 CMP TO REMAIN IN PLACE
 NO REPLACEMENT REQUIRED

