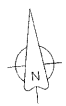
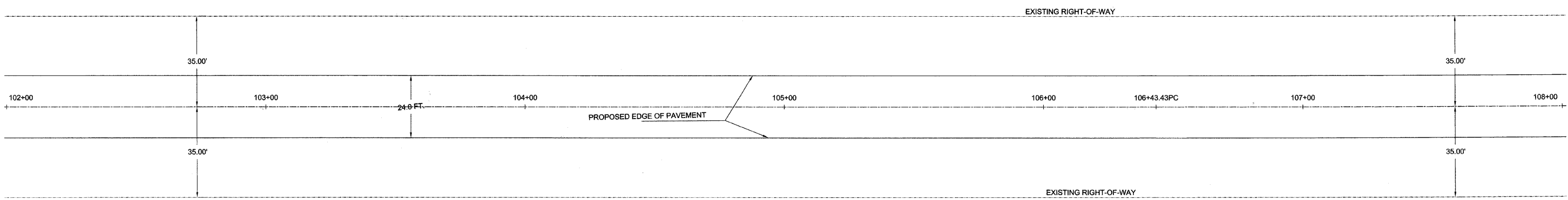
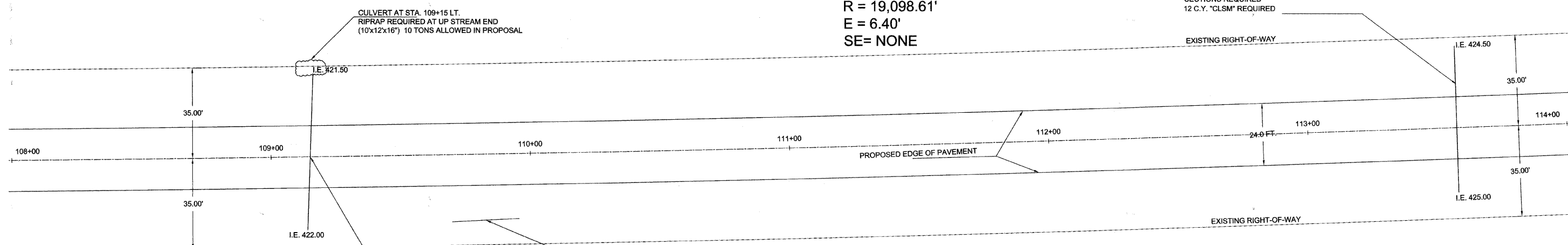


SECTION	COUNTY	TOTAL SHEETS	SHEET NO.
08-00119-00-FP	WAYNE	23	14
PAPERTOWN ROAD			
CONTRACT # 95632			
PLAN SHEET			



P.I. STA. 111+35.10
 $\Delta = 2^{\circ}57'$ LT.
 $D = 0^{\circ}18'$
 $T = 491.67'$
 $L = 983.33'$
 $R = 19,098.61'$
 $E = 6.40'$
 $SE = NONE$

STA. 113+58 EXISTING 30"x56"
 CMP TO BE REMOVED
 (NO SALVAGE REQUIRED)
 30' EQ. CLASS A, TYPE 1
 48' LONG, WITH PRECAST
 CONCRETE FLARED END
 SECTIONS REQUIRED
 12 C.Y. "CLSM" REQUIRED



CULVERT AT STA. 109+15 LT.
 RIPRAP REQUIRED AT UP STREAM END
 (10'x12"x16") 10 TONS ALLOWED IN PROPOSAL

STA. 109+15 LT. EXISTING 36"x60"
 CMP TO BE REMOVED
 (NO SALVAGE REQUIRED)
 36' EQ. CLASS A, TYPE 1
 56' LONG, WITH PRECAST
 CONCRETE FLARED END
 SECTIONS REQUIRED
 2"30' SKEW LT. FORWARD
 27 C.Y. "CLSM" REQUIRED

FIELD ENTRANCE STA. 109+82 RT. EXISTING
 12"x26" CMP TO BE REMOVED
 (NO SALVAGE REQUIRED)
 15"x30" PIPE CULVERTS, CLASS D,
 TYPE 1 REQUIRED
 (FLOWLINE TO MATCH SLOPE OF EXISTING
 DITCH)

