

F.A.U. RTE.	SECTION	COUNTY	TOTAL SHEETS	SHEET NO.
9307	06-00042-02-PV	MONROE	32	1
COVER SHEET				
CONTRACT NO. 97444				
FEDERAL AID PROJECT				

STATE OF ILLINOIS
DEPARTMENT OF TRANSPORTATION
PLANS FOR PROPOSED
F.A.U. ROUTE 9307 - KUNZ STREET
SECTION 06-00042-02-PV
PROJECT NO. M-5011 (313)
JOB NO. C-98-350-10
CITY OF COLUMBIA
MONROE COUNTY, ILLINOIS



INDEX OF SHEETS

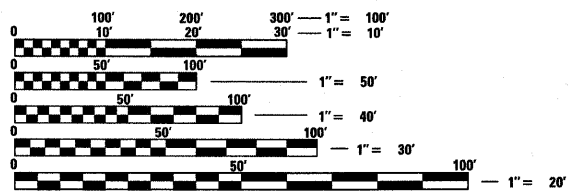
SHEET NO.	ITEM
1.	COVER SHEET
2.	GENERAL NOTES
3.	SUMMARY OF QUANTITIES
4.-5.	SCHEDULES
6.-7.	TYPICAL SECTIONS
8.-10.	PLAN & PROFILE SHEETS
11.	TRAFFIC CONTROL PLAN
12.-13.	EROSION CONTROL PLAN
14.-15.	RIGHT OF WAY PLAN
16.-17.	PAVEMENT MARKING PLAN
18.-19.	PAVEMENT JOINT LAYOUT
20.-22.	INTERSECTION DETAILS
23.	INTERSECTION & STAIR DETAILS
24.	CONSTRUCTION DETAILS
25.-32.	CROSS SECTIONS

STANDARDS

000001-05	STANDARD SYMBOLS ABBREVIATIONS & PATTERNS
280001-05	TEMPORARY EROSION CONTROL SYSTEMS
420001-07	PAVEMENT JOINTS
424001-05	CURB RAMPS FOR SIDEWALK
602301-02	INLET-TYPE A
602306-02	INLET-TYPE B
602401-02	MANHOLE-TYPE A
602701-02	MANHOLE STEPS
604001-03	FRAME AND LIDS - TYPE 1
604006-04	FRAME AND GRATE TYPE 3
604011-04	FRAME AND GRATE TYPE 3V
604086-02	FRAME AND GRATE TYPE 23
606001-04	CONCRETE CURB TYPE B AND COMBINATION CONCRETE CURB & GUTTER
701801-04	LANE CLOSURE MULTILANE 1W OR 2W CROSSWALK OR SIDEWALK CLOSURE
701901-01	TRAFFIC CONTROL DEVICES
720001-01	SIGN PANEL MOUNTING DETAILS
720006-02	SIGN PANEL ERECTION DETAILS
729001-01	APPLICATIONS OF TYPES A & B METAL POSTS (FOR SIGNS AND MARKERS)
780001-02	TYPICAL PAVEMENT MARKINGS
BLR 10-6	PORTLAND CEMENT CONCRETE PAVEMENT SPECIAL (NONREINFORCED)
BLR 17-4	TRAFFIC CONTROL DEVICES - DAY LABOR CONSTRUCTION

SCALE IN FEET

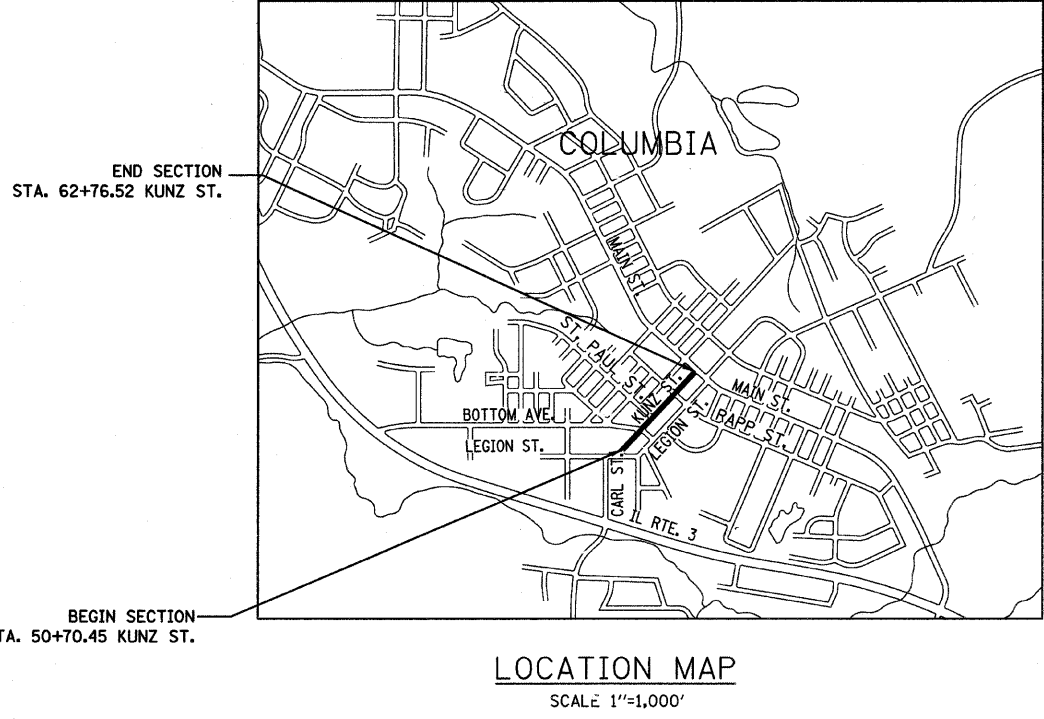
PLAN	1"=20'
PROFILE	1"=20' HORIZ. 1"=5' VERT.
CROSS SECTIONS	1"=10' HORIZ. 1"=5' VERT.



FULL SIZE PLANS HAVE BEEN PREPARED USING STANDARD ENGINEERING SCALES. REDUCED SIZED PLANS WILL NOT CONFORM TO STANDARD SCALES. IN MAKING MEASUREMENTS ON REDUCED PLANS, THE ABOVE SCALES MAY BE USED.

J.U.L.I.E.
JOINT UTILITY LOCATION INFORMATION FOR EXCAVATION
1-800-892-0123

ROADWAY CLASSIFICATION = URBAN ONE-WAY COLLECTOR
DESIGN SPEED = 30 M.P.H.
CURRENT TRAFFIC (2009) = 1,240 A.D.T.
PROJECTED TRAFFIC (2029) = 1,570 A.D.T.



END SECTION
STA. 62+76.52 KUNZ ST.

BEGIN SECTION
STA. 50+70.45 KUNZ ST.

GROSS LENGTH OF PROJECT = 1,206.07 FEET (0.228 MILES)
NET LENGTH = 1,144.27 FEET (0.217 MILES)
OMISSION STA. 53+32.01 TO STA. 53+93.81 = 61.80 FEET

ILLINOIS DEPARTMENT OF TRANSPORTATION

APPROVED _____ 04/21/2010 DATE
Kevin Hutchinson
KEVIN HUTCHINSON, MAYOR

PASSED _____ 4/23/10 DATE
Thomas L. Cissell
DISTRICT 8 PROJECT IMPLEMENTATION ENGINEER

RELEASING FOR BID
BASED ON LIMITED
REVIEW _____ 4/23/10 DATE
Thomas L. Cissell
DEPUTY DIRECTOR OF HIGHWAYS, REGION 5 ENGINEER



EXPIRES 11/30/2011

Thomas L. Cissell
THOMAS L. CISSSELL
P.E. NO. 062-056015
DATE: 04/22/2010

