

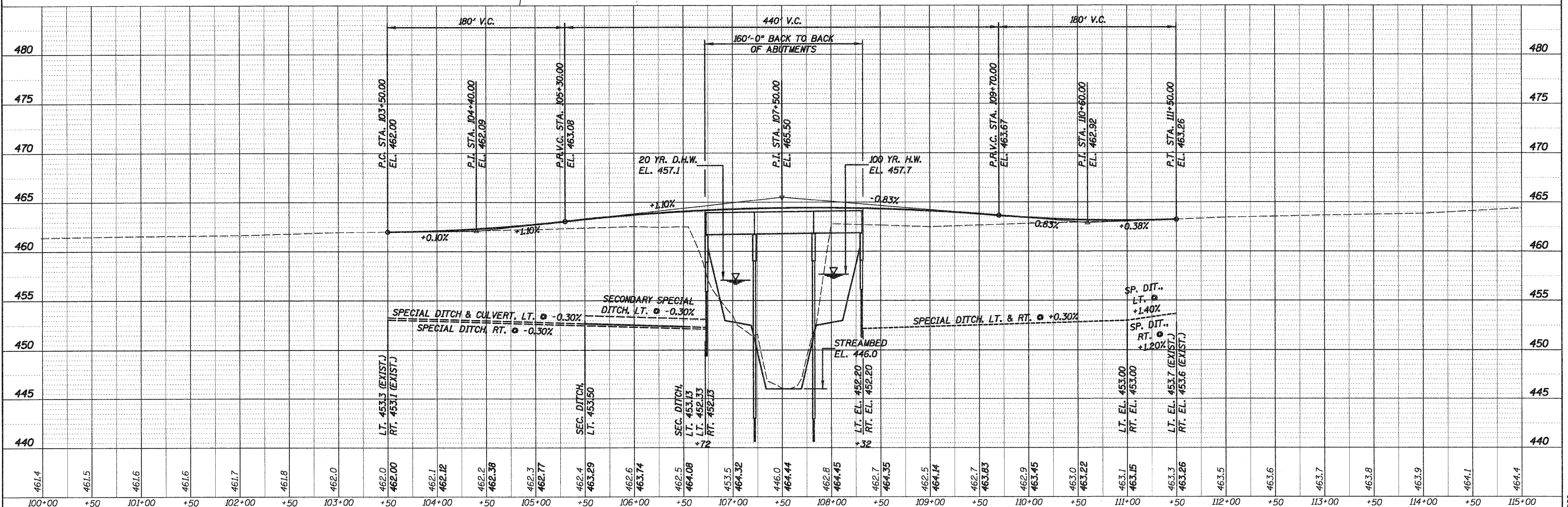
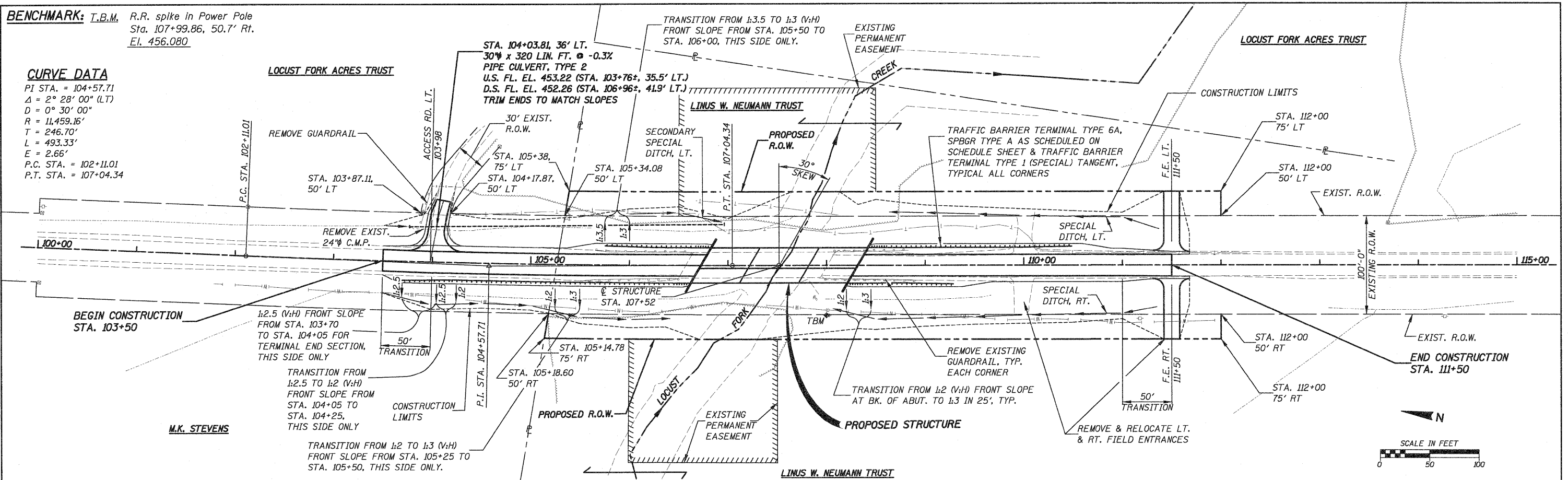
BENCHMARK: T.B.M. R.R. spike in Power Pole
Sta. 107+99.86, 50.7' Rt.
El. 456.080

CURVE DATA

PI STA. = 104+57.71
Δ = 2° 28' 00" (LT)
D = 0° 30' 00"
R = 11,459.16'
T = 246.70'
L = 493.33'
E = 2.66'
P.C. STA. = 102+11.01
P.T. STA. = 107+04.34

DATE	
BY	
DESIGNED	
DRAWN	
CHECKED	
DATE	

DATE	
BY	
DESIGNED	
DRAWN	
CHECKED	
DATE	



FILE NAME = h:\05250\04_p10f_5250.dgn	USER NAME = _USERDESCR_	DESIGNED - K.M.M.	REVISED - MAY 7, 2010	STATE OF ILLINOIS DEPARTMENT OF TRANSPORTATION	PLAN & PROFILE EXISTING & PROPOSED ROADWAY	F.A.S. / R.T.E. = 783	SECTION = 02-00074-00-BR	COUNTY = BOND	TOTAL SHEETS = 25	SHEET NO. = 4
PLOT SCALE = 49.9999" / IN.	CHECKED - L.D.G.	DATE = 5/7/2010	REVISED -			S.N. 003-3050	CONTRACT NO. 97446			
						ILLINOIS FED. AID PROJECT				
						CONTRACT NO. 97446				