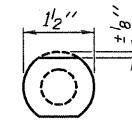
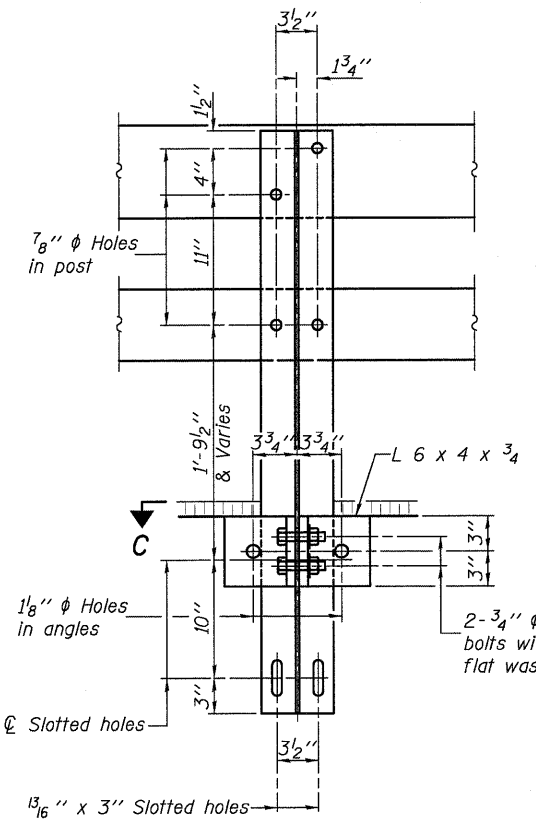


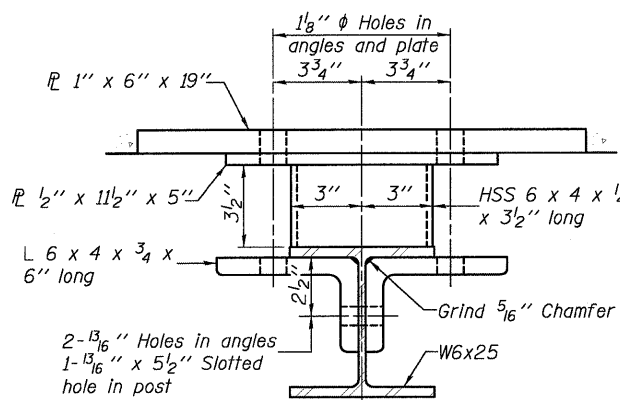
With Slot



Without Slot or Recess
VIEW A-A

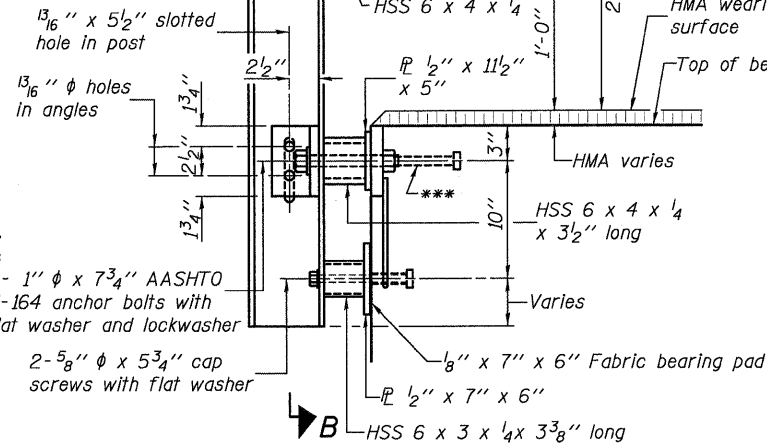


SECTION B-B

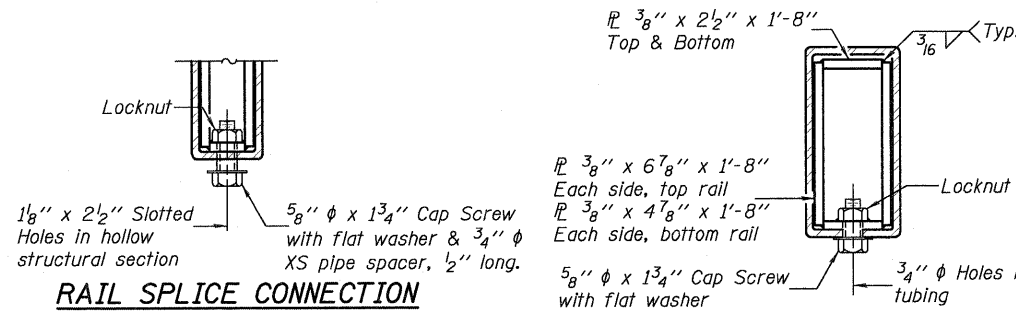
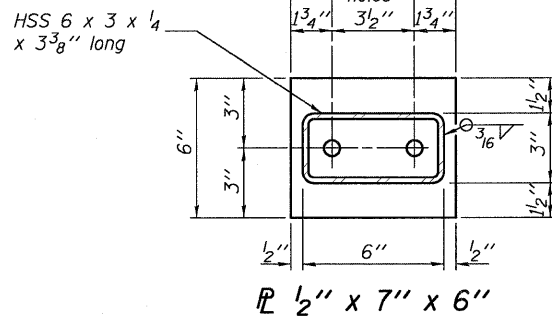
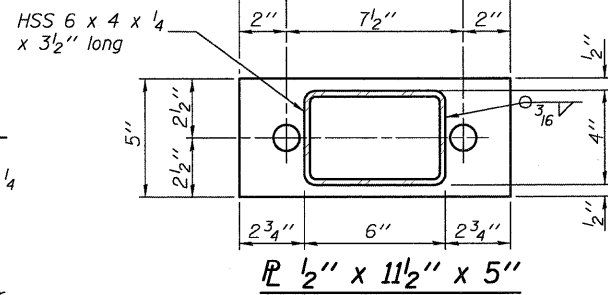


SECTION C-C

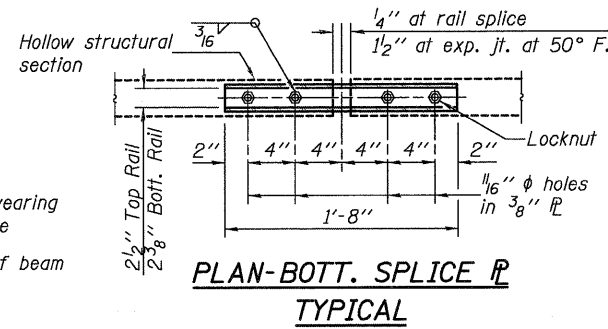
4-3/4" ϕ x 6" Round Head Bolts (With slot or approved recess in head) with locknut & flat washer. 7/8" ϕ holes in hollow structural section may be drilled in the field.



SECTION AT RAIL POST

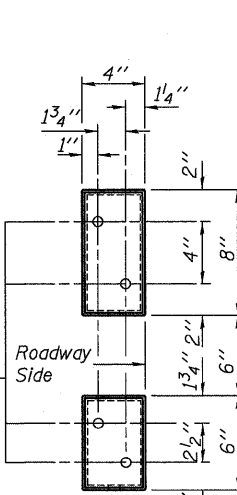


RAIL SPLICE CONNECTION AT EXPANSION JT.

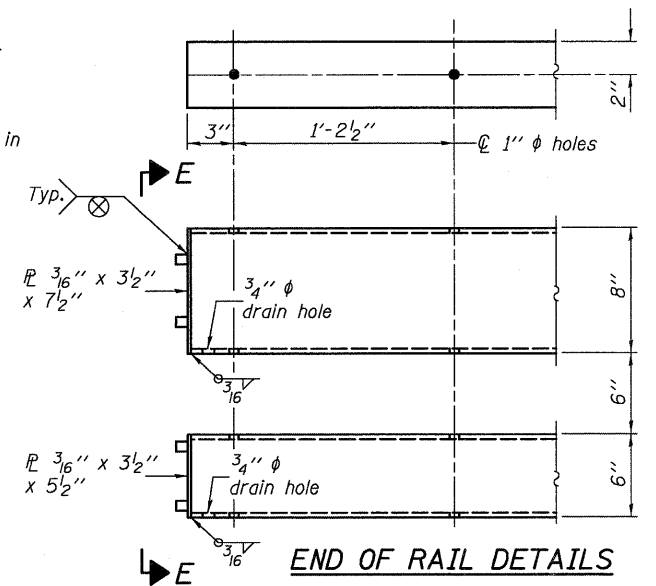


PLAN-BOTT. SPLICE P TYPICAL

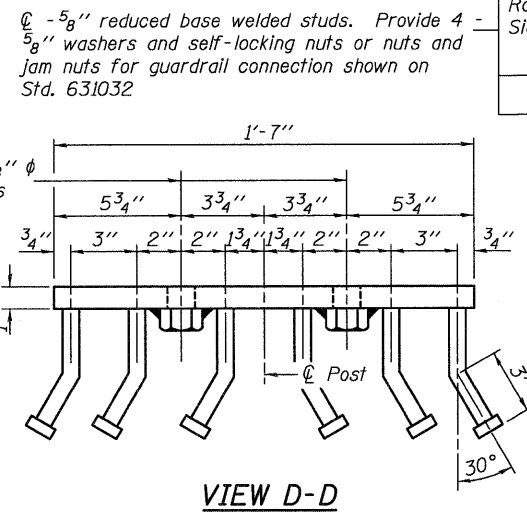
SECTION AT RAIL SPLICE



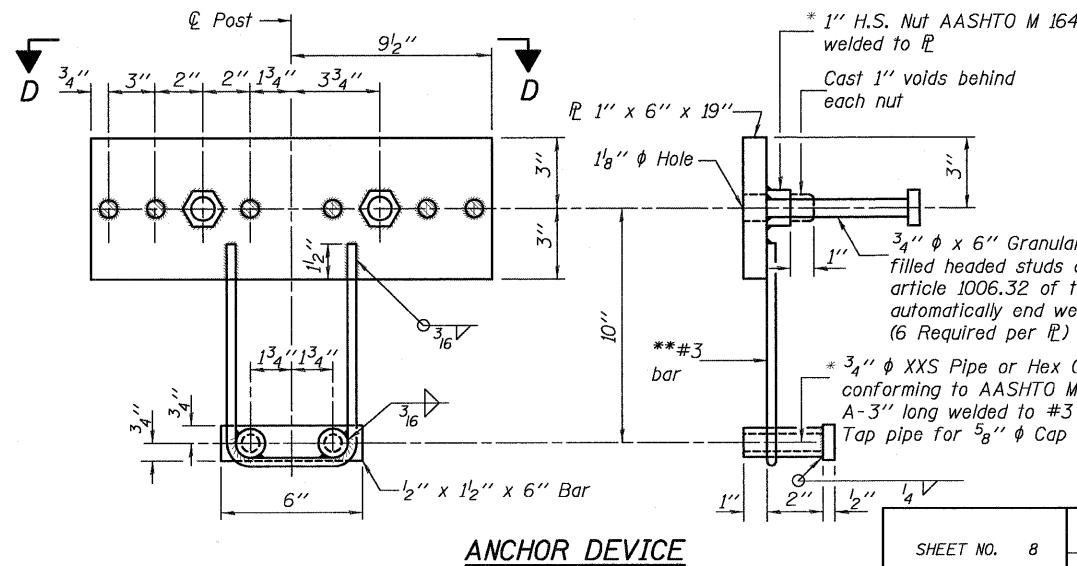
VIEW E-E



END OF RAIL DETAILS



VIEW D-D



ANCHOR DEVICE

Notes:
All field drilled holes shall be coated with an approved zinc rich paint before erection.
For multi-span bridges, sufficient 1/4" x 6" x 1'-2" galvanized steel shims shall be provided to align rail between adjacent spans. Cast included with Steel Railing, Type SM.
All steel rail members shall be galvanized according to Article 509.05 of the Standard Specifications.
*** The studs of the anchor devices shall be placed below the top reinforcement bars and the outermost longitudinal reinforcement bar shall be placed directly above the studs of the rail post anchor device.

** Whenever the lower insert assemblies interfere with strand locations, the #3 bars shall be cut and adjusted in order to allow raising or lowering of the lower inserts. Maximum adjustment not to exceed 1/2".

BILL OF MATERIAL

Item	Unit	Quantity
Steel Railing, Type SM	Foot	320

STEEL RAILING, TYPE SM WITH HOT-MIX ASPHALT WEARING SURFACE

SHEET NO.	F.A.S.	SECTION		TOTAL SHEETS	SHEET NO.
		783	02-00074-00-BR		
14	SHEETS	S.N. 003-3050		CONTRACT NO. 97446	
		ILLINOIS		FED. AID PROJECT	

*Threaded areas shall be plugged or blocked off during casting of beam. Galvanized after fabrication.

(6'-3" Maximum Post Spacing) (1/4" minimum to 3/8" maximum HMA thickness)

DESIGNED	K.M.M.
CHECKED	L.D.G.
DRAWN	K.H.L.
CHECKED	B.G.H.