

F.A. RTE	SECTION	COUNTY	TOTAL SHEETS	SHEET NO
*	**	***	304	48

STA.	TO STA.	FED. ROAD DIST. NO.	ILLINOIS	FED. AID PROJECT
				* FAU 9481, FAS 2887 (IL 37) ** (12.12X)RS-3;12B-1,12B1-1 *** FRANKLIN AND WILLIAMSON

EXIST. CURVE 10 (IL 37)
 PI STA. = 533+90.32
 $\Delta = 1^\circ 13' 56''$ (LT)
 $D = 0^\circ 06' 46''$
 $R = 50,852.82'$
 $T = 546.84'$
 $L = 1,093.63'$
 $E = 2.94'$
 P.C. STA. = 528+43.48
 P.T. STA. = 539+37.11

EXIST. CURVE 11 (UNION RD)
 PI STA. = 11+24.17
 $\Delta = 8^\circ 20' 10''$ (RT)
 $D = 3^\circ 40' 28''$
 $R = 1,559.35'$
 $T = 113.64'$
 $L = 226.87'$
 $E = 4.14'$
 P.C. STA. = 10+10.53
 P.T. STA. = 12+37.40

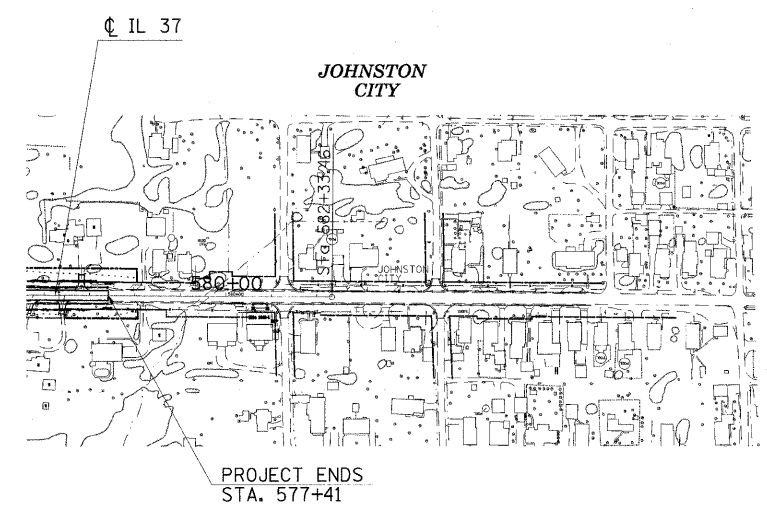
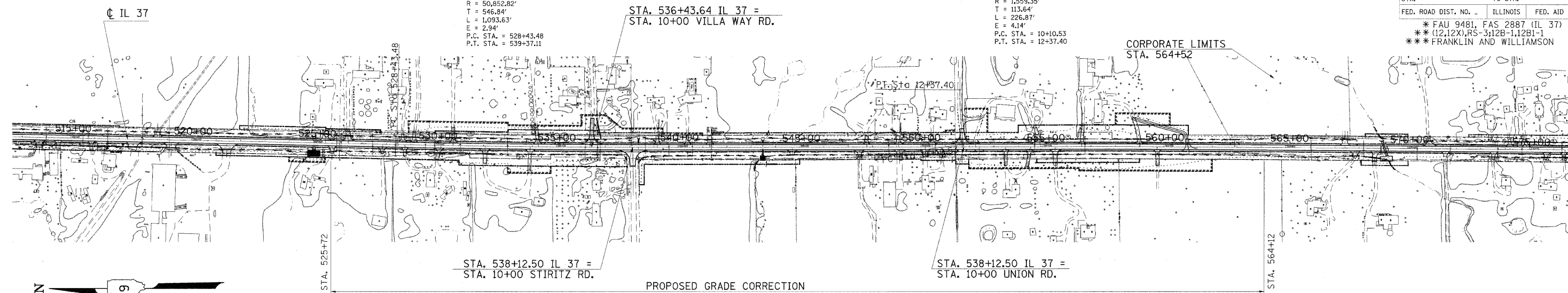
STA. 536+43.64 IL 37 =
 STA. 10+00 VILLA WAY RD.

CORPORATE LIMITS
 STA. 564+52

STA. 538+12.50 IL 37 =
 STA. 10+00 STIRITZ RD.

STA. 538+12.50 IL 37 =
 STA. 10+00 UNION RD.

PROPOSED GRADE CORRECTION



PROJECT ENDS
 STA. 577+41

REVISIONS	
NAME	DATE

ILLINOIS DEPARTMENT OF TRANSPORTATION

GENERAL PLANS
STA. 514+00 TO STA. 582+33.46

SCALE: VERT. 200
 HORIZ.

DATE DRAWN BY CNH
 CHECKED BY

PLOT DATE = 12/7/2009
 FILE NAME = o:\sp\work\VP\DOT\HEADON\dm436590\98040034.dgn
 PLOT SCALE = 200.0000' / IN.
 USER NAME = headon

GP004
 GPTD4

GP005
 GPTD5