

F.A. RTE.	SECTION	COUNTY	TOTAL SHEETS	SHEET NO.
*	**	***	304	51

STA. TO STA.

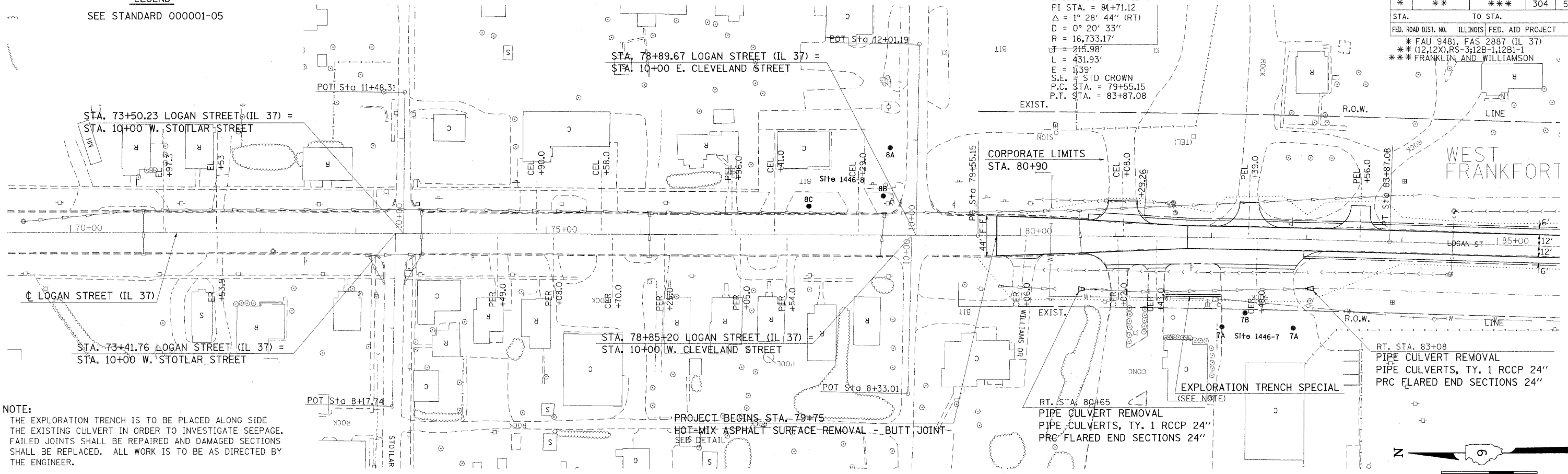
FED. ROAD DIST. NO. ILLINOIS FED. AID PROJECT

\* FAU 9481, FAS 2887 (IL 37)  
 \*\* (12.12X)RS-3;12B-1,12B1-1  
 \*\*\* FRANKLIN AND WILLIAMSON

**LEGEND**  
 SEE STANDARD 000001-05

EXIST. CURVE 3 (IL 37)  
 PI STA. = 84+71.12  
 $\Delta = 1^\circ 28' 44''$  (RT)  
 $D = 0^\circ 20' 33''$   
 $R = 16,733.17'$   
 $L = 215.98'$   
 $E = 431.93'$   
 $S.E. = STD CROWN$   
 P.C. STA. = 79+55.15  
 P.T. STA. = 83+87.08

PLAN	DATE
SURVEYED	
ALIGNED	
CHECKED	
NO.	
DATE	
FILE NAME	

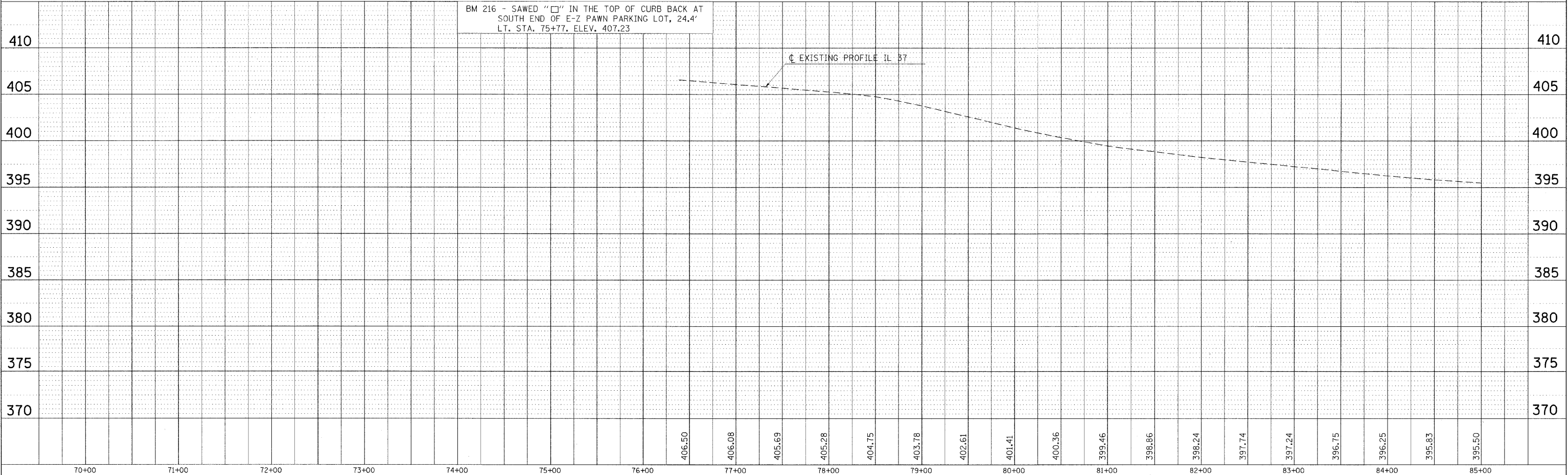


**NOTE:**  
 THE EXPLORATION TRENCH IS TO BE PLACED ALONG SIDE THE EXISTING CULVERT IN ORDER TO INVESTIGATE SEEPAGE. FAILED JOINTS SHALL BE REPAIRED AND DAMAGED SECTIONS SHALL BE REPLACED. ALL WORK IS TO BE AS DIRECTED BY THE ENGINEER.

RT. STA. 83+08  
 PIPE CULVERT REMOVAL  
 PIPE CULVERTS, TY. 1 RCCP 24"  
 PRC FLARED END SECTIONS 24"

RT. STA. 80+65  
 PIPE CULVERT REMOVAL  
 PIPE CULVERTS, TY. 1 RCCP 24"  
 PRC FLARED END SECTIONS 24"

PROJECT BEGINS STA. 79+75  
 HOT-MIX ASPHALT SURFACE REMOVAL - BUTT JOINT  
 SEE DETAIL



PLOT DATE = 12/7/2009  
 PLOT SCALE = 5/8" = 1' / IN.  
 USER NAME = harsden

**PLAN-PROFILE STA. 70+00 TO STA. 85+00**