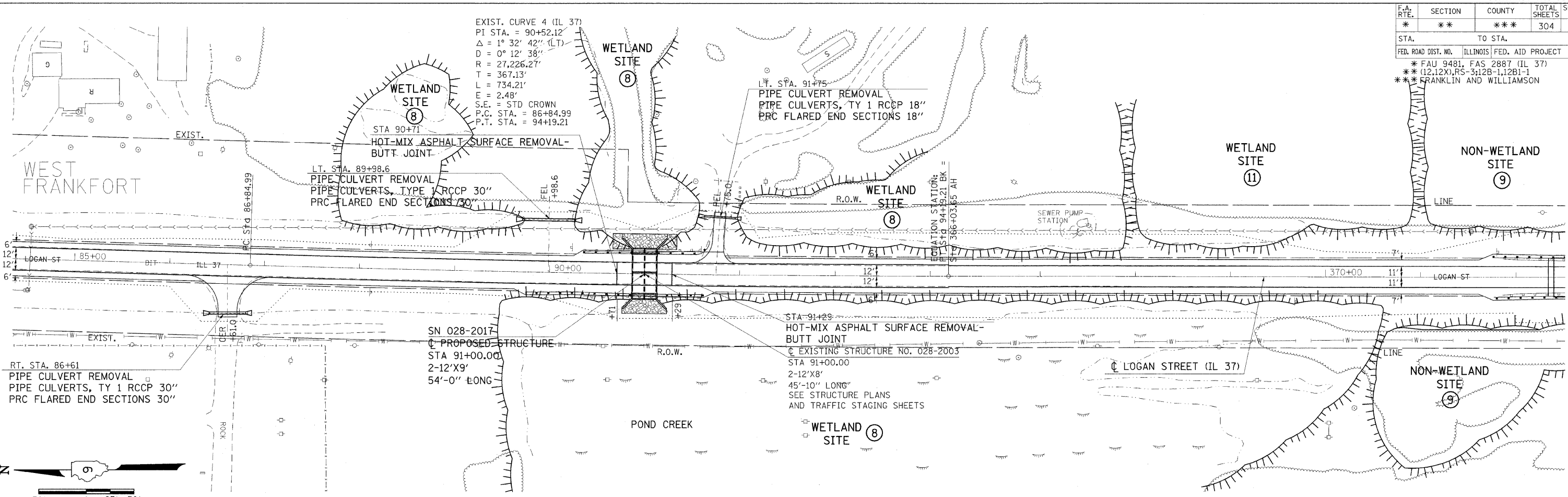
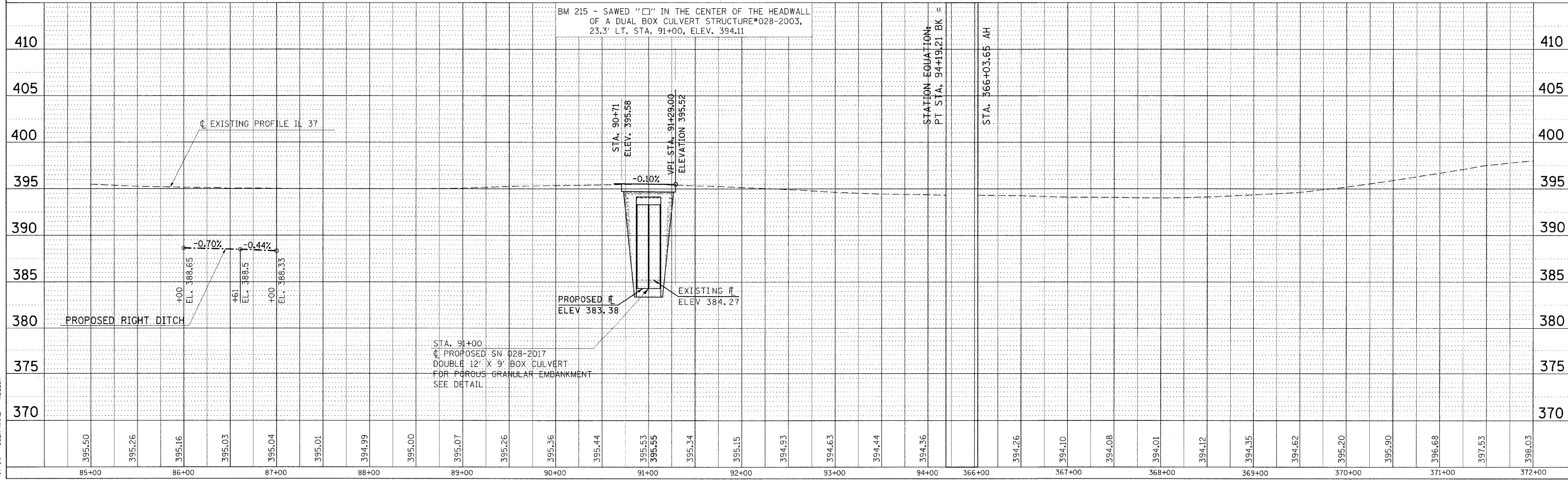
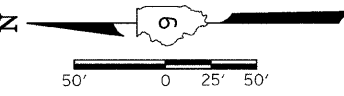


F.A. RTE.	SECTION	COUNTY	TOTAL SHEETS	SHEET NO.
*	**	***	304	52
STA. TO STA.				
FED. ROAD DIST. NO. ILLINOIS FED. AID PROJECT				
* FAU 9481, FAS 2887 (IL 37)				
** (12.12X)RS-5:12B-1,12B1-1				
*** FRANKLIN AND WILLIAMSON				



EXIST. CURVE 4 (IL 37)  
 PI STA. = 90+52.12'  
 Δ = 1° 32' 42" (LT)  
 D = 0° 12' 38"  
 R = 27,226.27'  
 T = 367.13'  
 L = 734.21'  
 E = 2.48'  
 S.E. = STD CROWN  
 P.C. STA. = 86+84.99  
 P.T. STA. = 94+19.21

RT. STA. 86+61  
 PIPE CULVERT REMOVAL  
 PIPE CULVERTS, TY 1 RCCP 30"  
 PRC FLARED END SECTIONS 30"



BM 215 - SAWED "C" IN THE CENTER OF THE HEADWALL OF A DUAL BOX CULVERT STRUCTURE#028-2003, 23.3' LT. STA. 91+00, ELEV. 394.11

STA. 91+00  
 PROPOSED SN 028-2017  
 DOUBLE 12' X 9' BOX CULVERT  
 FOR POROUS GRANULAR EMBANKMENT  
 SEE DETAIL

STATION EQUATION:  
 PT STA. 94+19.21 BK =

STA. 366+03.65 AH

PLOT DATE = 3/2/2018  
 FILE NAME = c:\pwworkspace\p001\project\98823\98823.dgn  
 PLOT SCALE = 50.0000 / IN.  
 USER NAME = hheaden

PLAN-PROFILE STA. 85+00 TO STA. 372+00