

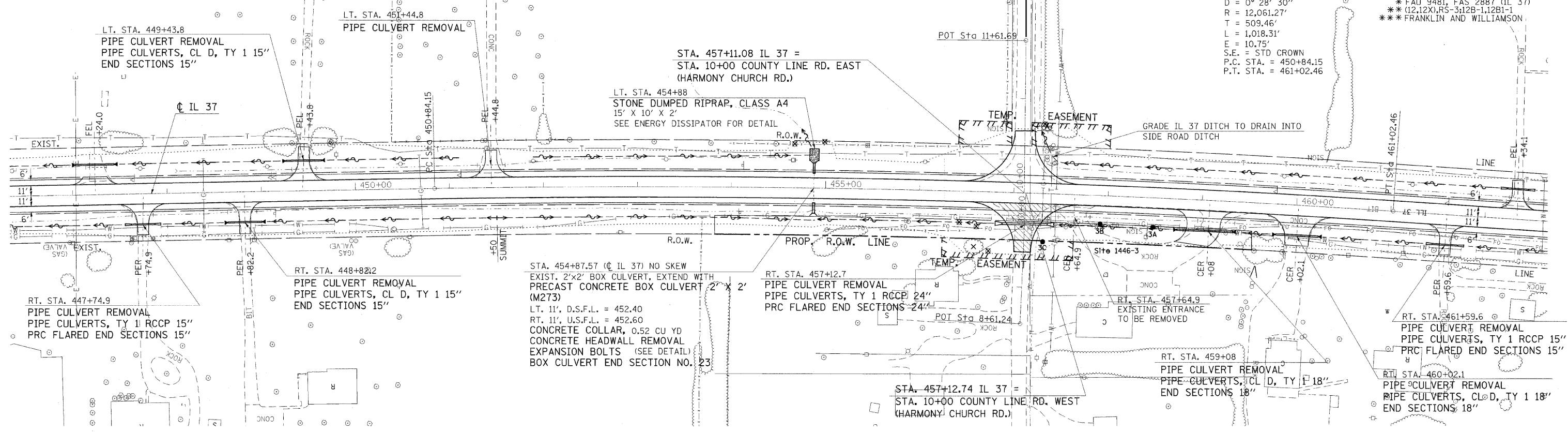
F.A. RTE.	SECTION	COUNTY	TOTAL SHEETS	SHEET NO.
*	**	***	304	58

STA. TO STA.  
 ILLINOIS FED. AID PROJECT  
 \* FAU 9481, FAS 2887 (IL 37)  
 \*\* (12.12X)RS-3-12B-1,12B1-1  
 \*\*\* FRANKLIN AND WILLIAMSON



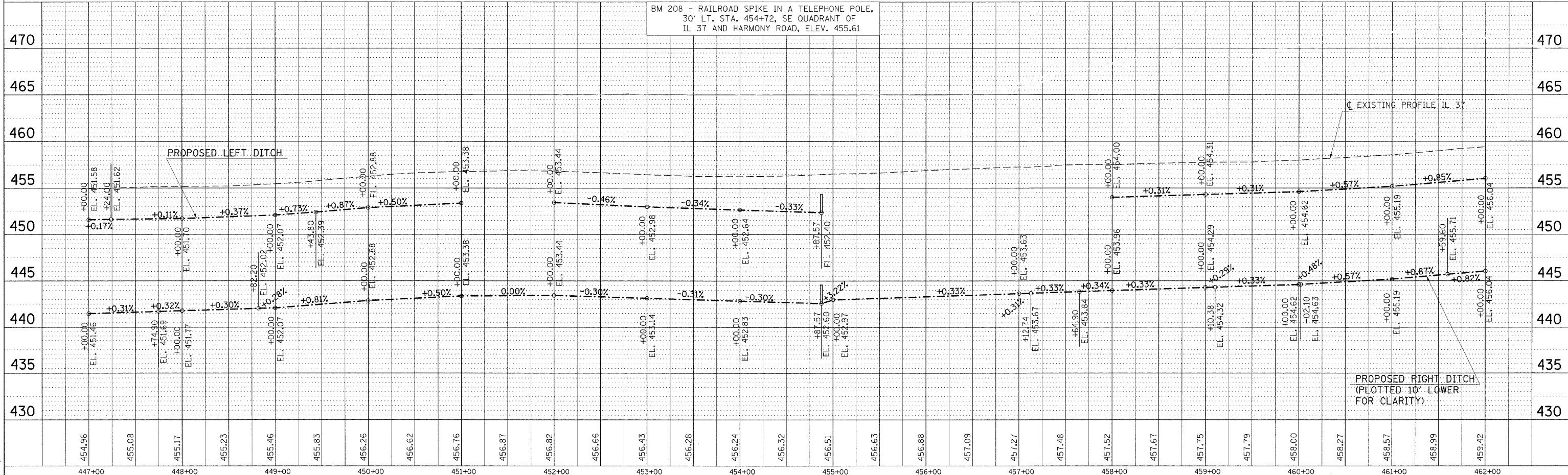
Franklin County Williamson County

EXIST. CURVE 7 (IL 37)  
 PI STA. = 455+93.61  
 $\Delta = 4^\circ 50' 14''$  (RT)  
 $D = 0^\circ 28' 30''$   
 $R = 12,061.27'$   
 $T = 509.46'$   
 $L = 1,018.31'$   
 $E = 10.75'$   
 S.E. = STD CROWN  
 P.C. STA. = 450+84.15  
 P.T. STA. = 461+02.46



PLAN	DATE
SURVEYED	
DESIGNED	
CHECKED	
BY	
NO.	

BM 208 - RAILROAD SPIKE IN A TELEPHONE POLE,  
 30' LT. STA. 454+72, SE QUADRANT OF  
 IL 37 AND HARMONY ROAD, ELEV. 455.61



PLOT DATE = 2/19/2018  
 FILE NAME = c:\pwork\h\hendon\jms43630\franklin\p1.dgn  
 31009 PLOT SCALE = 58.0000 / IN.  
 31199 USER NAME = hendon

PLAN-PROFILE STA. 447+00 TO STA. 462+00