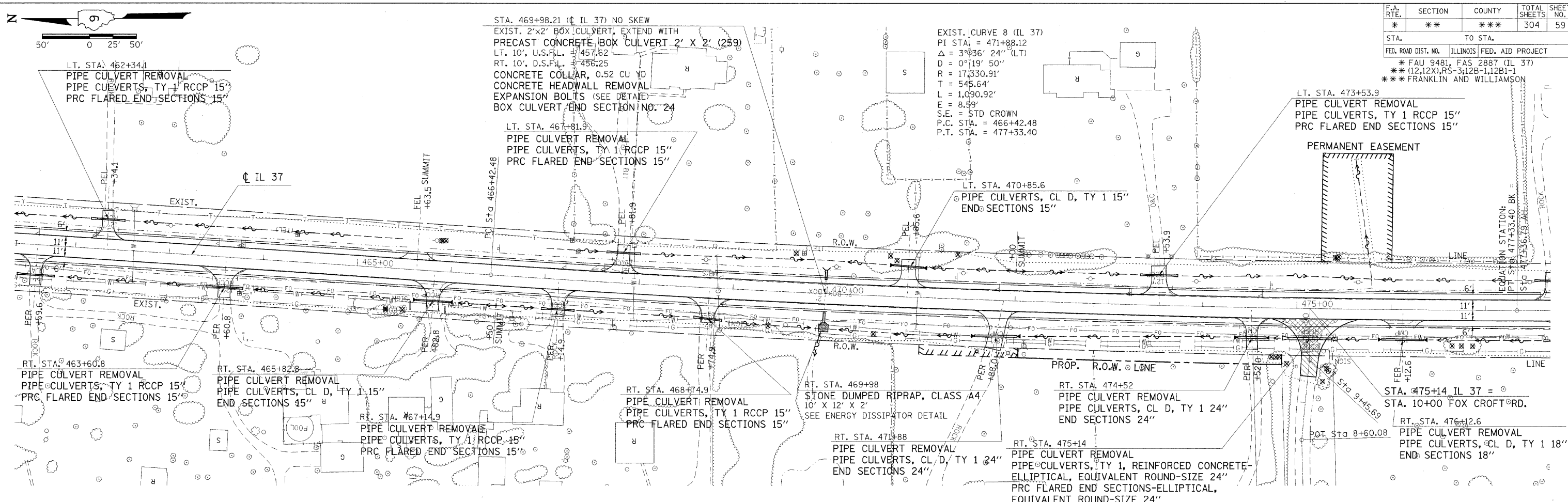


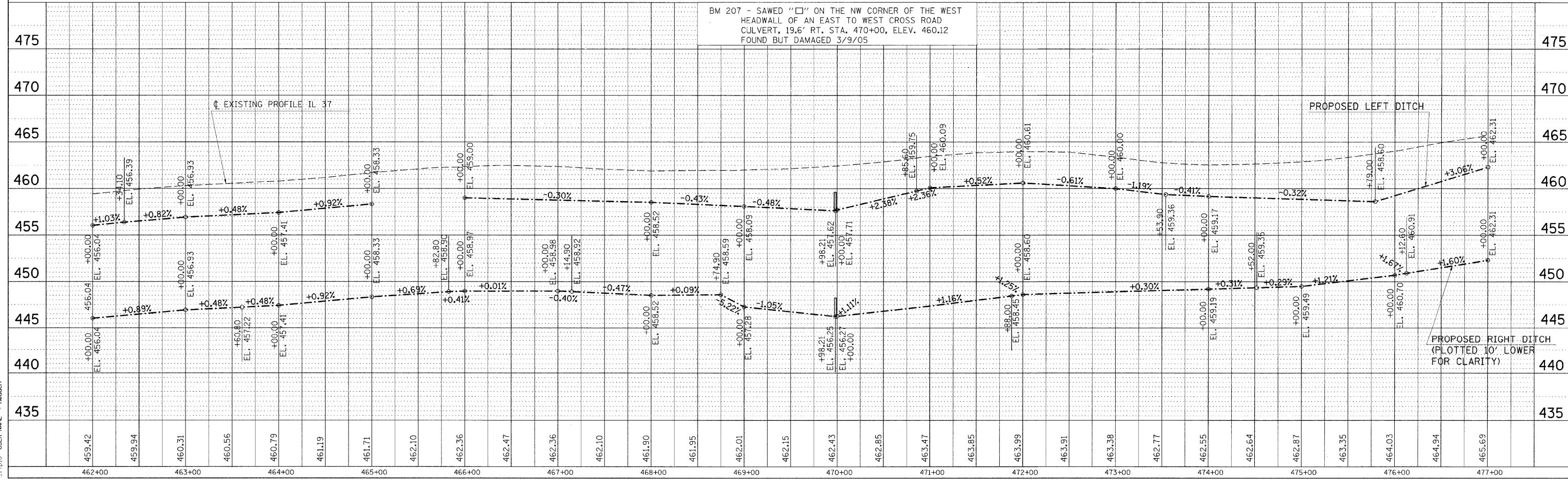
F.A. RTE.	SECTION	COUNTY	TOTAL SHEETS	SHEET NO.
*	**	***	304	59

STA.	TO STA.
FED. ROAD DIST. NO.	ILLINOIS FED. AID PROJECT

* FAU 9481, FAS 2887 (IL 37)
 ** (12,12X), RS-3; 12B-1, 12B1-1
 *** FRANKLIN AND WILLIAMSON



BM 207 - SAWED "□" ON THE NW CORNER OF THE WEST HEADWALL OF AN EAST TO WEST CROSS ROAD CULVERT, 19.6' RT. STA. 470+00, ELEV. 460.12 FOUND BUT DAMAGED 3/9/05



NO.	DATE	BY
1		
2		
3		
4		
5		

PLOT DATE = 2/18/2010
 FILE NAME = 37c010_PLOT_SCALE = 500/8000 / IN.
 37c010 USER NAME = headon

PLAN-PROFILE STA. 462+00 TO STA. 477+00