

F.A. RFE.	SECTION	COUNTY	TOTAL SHEETS	SHEET NO.
*	**	***	304	64

STA. 538+36.21 (C IL 37) NO SKEW  
EXISTING 2'x2' BOX CULVERT, EXTEND WITH  
PRECAST CONCRETE BOX CULVERT 2' X 2'  
(M259)  
LT. 14', U.S.F.L. = 434.92  
CONCRETE COLLAR, 0.26 CU. YDS.  
CONCRETE HEADWALL REMOVAL  
EXPANSION BOLTS (SEE DETAIL)  
BOX CULVERT END SECTION NO. 29

LT. STA. 539+13.9  
PIPE CULVERT REMOVAL  
PIPE CULVERTS, TY 1 RCCP 15"  
PRC FLARED END SECTIONS 15"

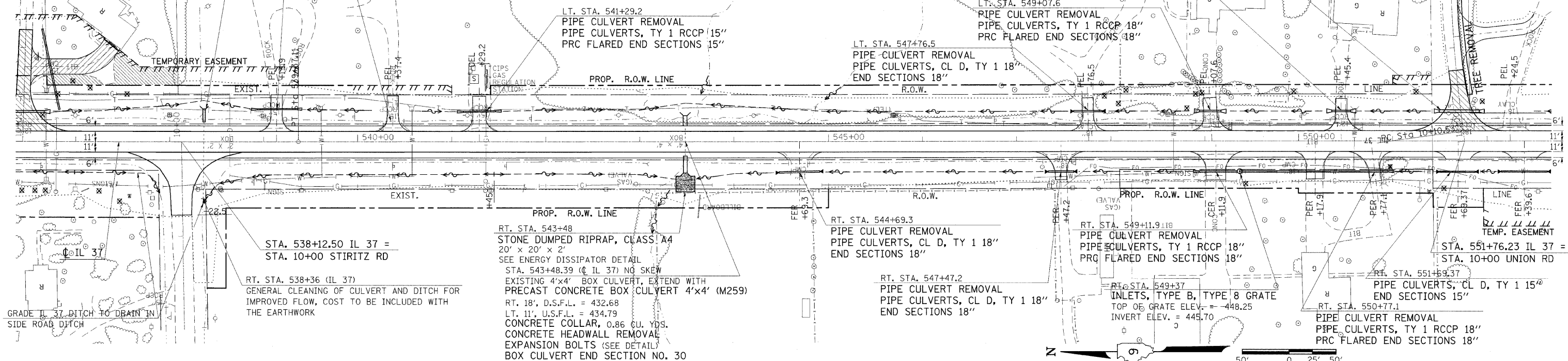
- NOTES:
- FOR PLAN PROFILE OF THE TEMPORARY DETOUR #1, SEE STAGE 1 PLAN SHEET.
  - FOR PLAN PROFILE OF THE TEMPORARY DETOUR #2, SEE STAGE 1 PLAN SHEET.
  - FOR PLAN OF IL 37 PAVEMENT REMOVAL, SEE DETOUR RD #1, STAGE 2 AND DETOUR RD #2, STAGE 2 PLAN SHEETS.
  - FOR PLAN OF TEMPORARY DETOUR #1 PAVEMENT REMOVAL SEE DETOUR RD #1, STAGE 3 PLAN SHEET.
  - FOR PLAN OF TEMPORARY DETOUR #2 PAVEMENT REMOVAL SEE DETOUR RD #2, STAGE 3 PLAN SHEET.

LT. STA. 551+76.23  
PIPE CULVERT REMOVAL  
PIPE CULVERTS, TY 1, REINFORCED  
CONCRETE ELLIPTICAL, EQUIVALENT  
ROUND-SIZE 24"  
PRC FLARED END SECTIONS-ELLIPTICAL,  
EQUIVALENT ROUND-SIZE 24"

LT. STA. 550+45.4  
PIPE CULVERT REMOVAL  
PIPE CULVERTS, TY 1 RCCP 18"  
PRC FLARED END SECTIONS 18"

LT. STA. 547+76.5  
PIPE CULVERT REMOVAL  
PIPE CULVERTS, CL D, TY 1 18"  
END SECTIONS 18"

LT. STA. 541+29.2  
PIPE CULVERT REMOVAL  
PIPE CULVERTS, TY 1 RCCP 15"  
PRC FLARED END SECTIONS 15"



DATE	BY	REVISION

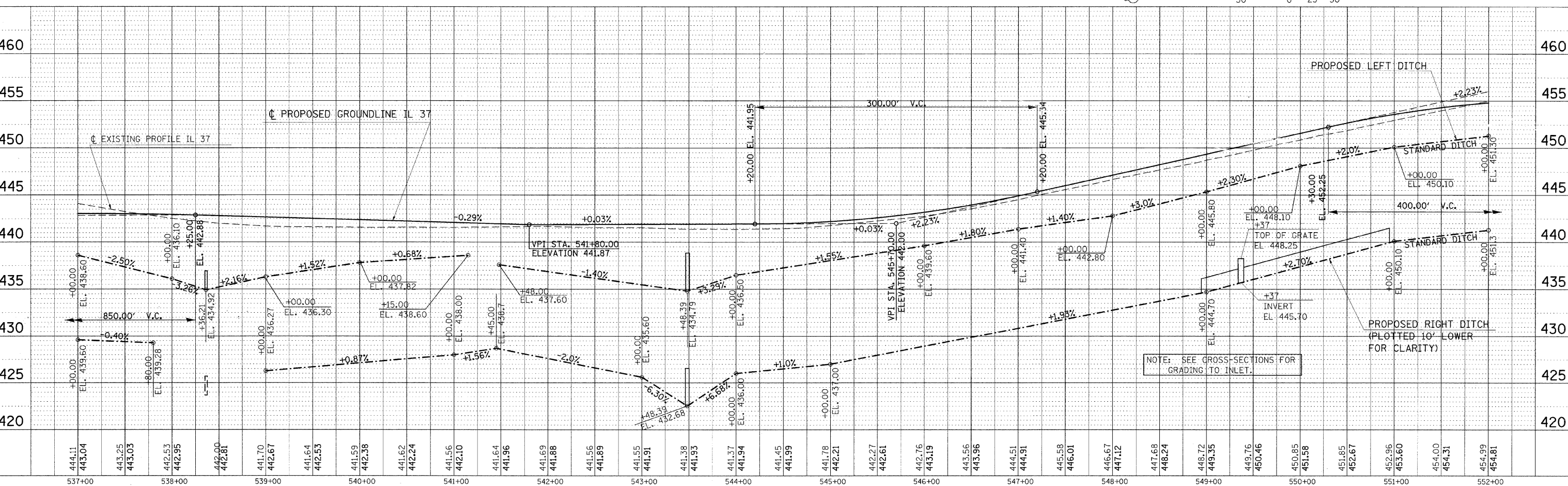
STA. 538+12.50 IL 37 =  
STA. 10+00 STIRITZ RD  
RT. STA. 538+36 (IL 37)  
GENERAL CLEANING OF CULVERT AND DITCH FOR  
IMPROVED FLOW, COST TO BE INCLUDED WITH  
THE EARTHWORK

RT. STA. 543+48  
STONE DUMPED RIPRAP, CLASS A4  
20' x 20' x 2'  
SEE ENERGY DISSIPATOR DETAIL  
STA. 543+48.39 (C IL 37) NO SKEW  
EXISTING 4'x4' BOX CULVERT, EXTEND WITH  
PRECAST CONCRETE BOX CULVERT 4'x4' (M259)  
RT. 18', D.S.F.L. = 432.68  
LT. 11', U.S.F.L. = 434.79  
CONCRETE COLLAR, 0.86 CU. YDS.  
CONCRETE HEADWALL REMOVAL  
EXPANSION BOLTS (SEE DETAIL)  
BOX CULVERT END SECTION NO. 30

RT. STA. 544+69.3  
PIPE CULVERT REMOVAL  
PIPE CULVERTS, CL D, TY 1 18"  
END SECTIONS 18"

RT. STA. 549+11.9  
PIPE CULVERT REMOVAL  
PIPE CULVERTS, TY 1 RCCP 18"  
PRC FLARED END SECTIONS 18"

RT. STA. 551+69.37  
PIPE CULVERTS, CL D, TY 1 15"  
END SECTIONS 15"



NOTE: SEE CROSS-SECTIONS FOR  
GRADING TO INLET.

3/20/18  
PLOT DATE = 2/18/2018  
FILE NAME = c:\p\work\p\11\DOT\HEADON\11m\43859\98823\2.dgn  
3/18/18 USER NAME = bosson

PLAN-PROFILE STA. 537+00 TO STA. 552+00