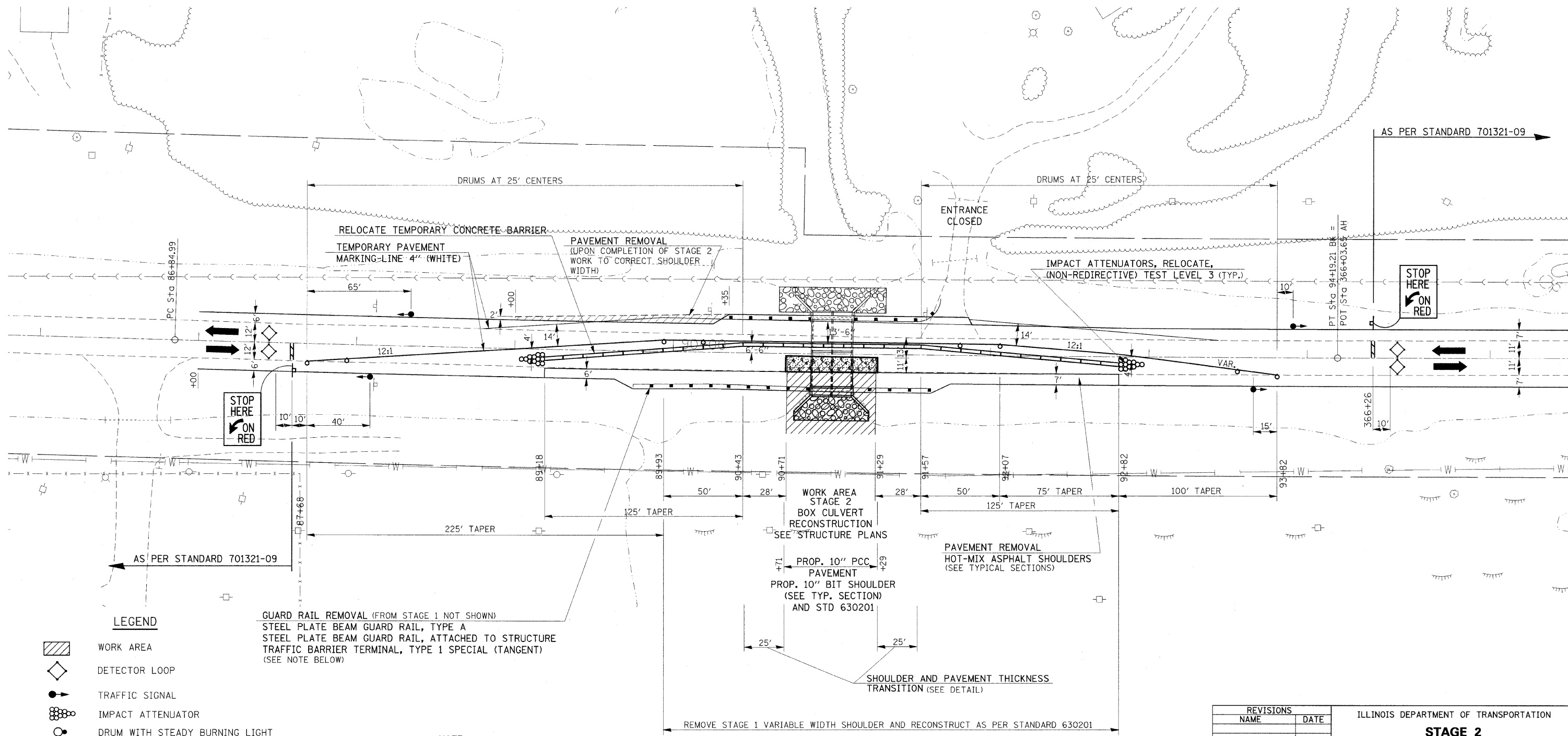


F.A. RTE	SECTION	COUNTY	TOTAL SHEETS	SHEET NO
**	**	***	304	75

STA.	TO STA.	FED. ROAD DIST. NO.	ILLINOIS	FED. AID PROJECT

* FAU 9481, FAS 2887 (IL 37)
 ** (12,12X),RS-3,12B-1,12B1-1
 *** FRANKLIN AND WILLIAMSON



LEGEND

- WORK AREA
- DETECTOR LOOP
- TRAFFIC SIGNAL
- IMPACT ATTENUATOR
- DRUM WITH STEADY BURNING LIGHT
- TEMPORARY CONCRETE BARRIER
- SIGN
- PERMANENT GUARDRAIL
- STAGING GUARDRAIL

GUARD RAIL REMOVAL (FROM STAGE 1 NOT SHOWN)
 STEEL PLATE BEAM GUARD RAIL, TYPE A
 STEEL PLATE BEAM GUARD RAIL, ATTACHED TO STRUCTURE
 TRAFFIC BARRIER TERMINAL, TYPE 1 SPECIAL (TANGENT)
 (SEE NOTE BELOW)

NOTE:
 ALL FINAL GUARDRAIL POSTS AND BARRIER TERMINALS NOTED ON THIS STAGE ARE TO BE ERECTED AT THE HEIGHT REQUIRED FOR THE FINAL SURFACE COURSE SHOWN ON PLAN/PROFILE SHEET, AS DIRECTED BY THE ENGINEER AND NOTED ON STANDARD 630001.

REVISIONS	
NAME	DATE

ILLINOIS DEPARTMENT OF TRANSPORTATION
STAGE 2
BOX CULVERT
PROP. SN 028-2017
RECONSTRUCTION
 SCALE: VERT. APPROX. 30
 HORIZ. DATE DRAWN BY CNH
 CHECKED BY

PLOT DATE = 12/7/2009
 PLOT SCALE = 30/1000
 USER NAME = hudson