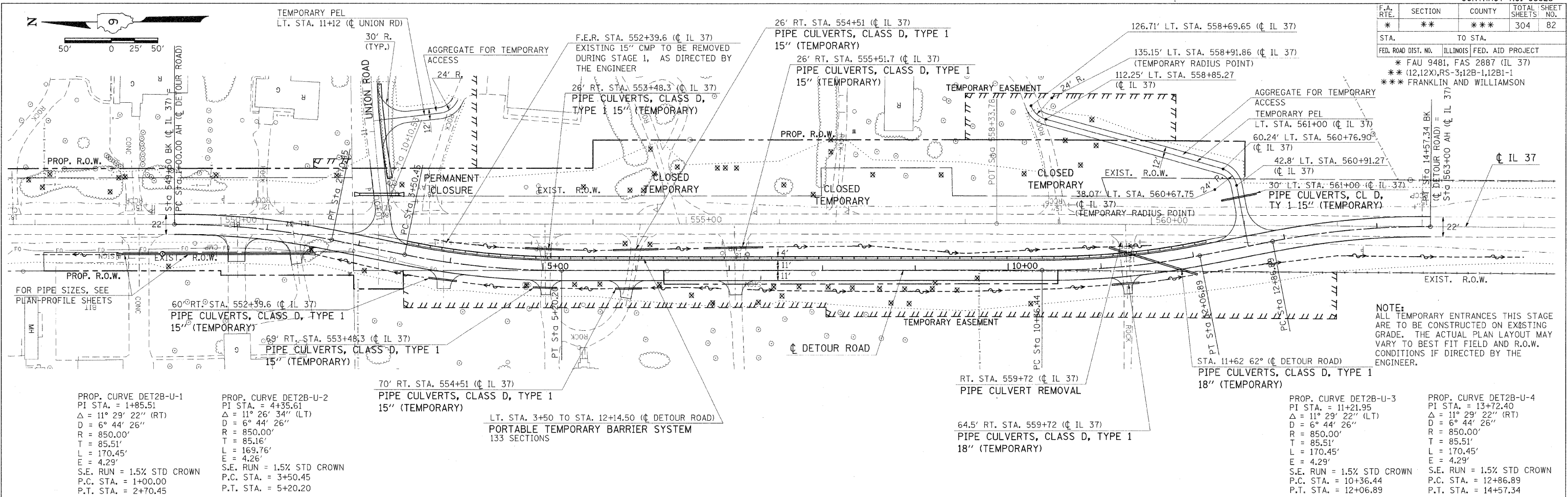


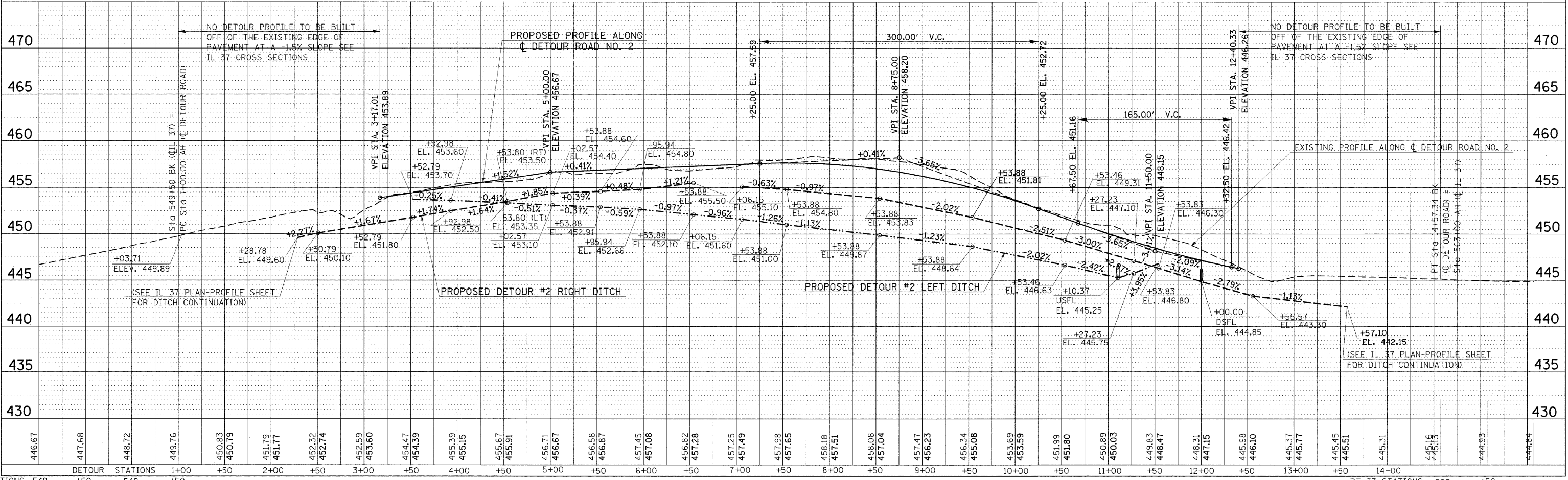
| F.A. RTE. | SECTION | COUNTY | TOTAL SHEETS | SHEET NO. |
|---|---------|--------|--------------|-----------|
| * | ** | ** | 304 | 82 |
| STA. TO STA. | | | | |
| FED. ROAD DIST. NO. ILLINOIS FED. AID PROJECT | | | | |
| * FAU 9481, FAS 2887 (IL 37) | | | | |
| ** (12,12X),RS-3,12B-1,12B1-1 | | | | |
| *** FRANKLIN AND WILLIAMSON | | | | |



NOTE: ALL TEMPORARY ENTRANCES THIS STAGE ARE TO BE CONSTRUCTED ON EXISTING GRADE. THE ACTUAL PLAN LAYOUT MAY VARY TO BEST FIT FIELD AND R.O.W. CONDITIONS IF DIRECTED BY THE ENGINEER.

| | | | |
|---|---|--|--|
| <p>PROP. CURVE DET2B-U-1 PI STA. = 1+85.51 Δ = 11° 29' 22" (RT) D = 6° 44' 26" R = 850.00' T = 85.51' L = 170.45' E = 4.29' S.E. RUN = 1.5% STD CROWN P.C. STA. = 1+00.00 P.T. STA. = 2+70.45</p> | <p>PROP. CURVE DET2B-U-2 PI STA. = 4+35.61 Δ = 11° 26' 34" (LT) D = 6° 44' 26" R = 850.00' T = 85.16' L = 169.76' E = 4.26' S.E. RUN = 1.5% STD CROWN P.C. STA. = 3+50.45 P.T. STA. = 5+20.20</p> | <p>PROP. CURVE DET2B-U-3 PI STA. = 11+21.95 Δ = 11° 29' 22" (LT) D = 6° 44' 26" R = 850.00' T = 85.51' L = 170.45' E = 4.29' S.E. RUN = 1.5% STD CROWN P.C. STA. = 10+36.44 P.T. STA. = 12+06.89</p> | <p>PROP. CURVE DET2B-U-4 PI STA. = 13+72.40 Δ = 11° 29' 22" (RT) D = 6° 44' 26" R = 850.00' T = 85.51' L = 170.45' E = 4.29' S.E. RUN = 1.5% STD CROWN P.C. STA. = 12+86.89 P.T. STA. = 14+57.34</p> |
|---|---|--|--|

| DATE | BY | REVISION |
|------|----|----------|
| | | |



| DATE | BY | REVISION |
|------|----|----------|
| | | |

RT 37 STATIONS 548 +50 549 +50 549.76 550.83 550.79 551.79 551.77 552.32 552.74 552.59 553.60 554.47 554.39 555.39 555.15 555.67 555.91 556.71 556.67 556.58 556.87 557.45 557.08 558.82 557.28 557.25 557.49 557.98 557.65 558.18 557.51 558.08 557.04 557.47 556.23 556.34 555.08 553.69 553.59 551.99 551.80 550.89 550.03 549.83 548.47 548.31 547.15 544.98 546.10 545.37 545.77 544.45 544.51 544.31 544.16 544.13 544.93 544.64