

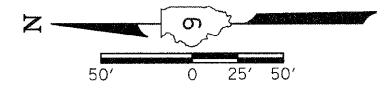
F.A. RTE.	SECTION	COUNTY	TOTAL SHEETS	SHEET NO.
*	**	***	304	96

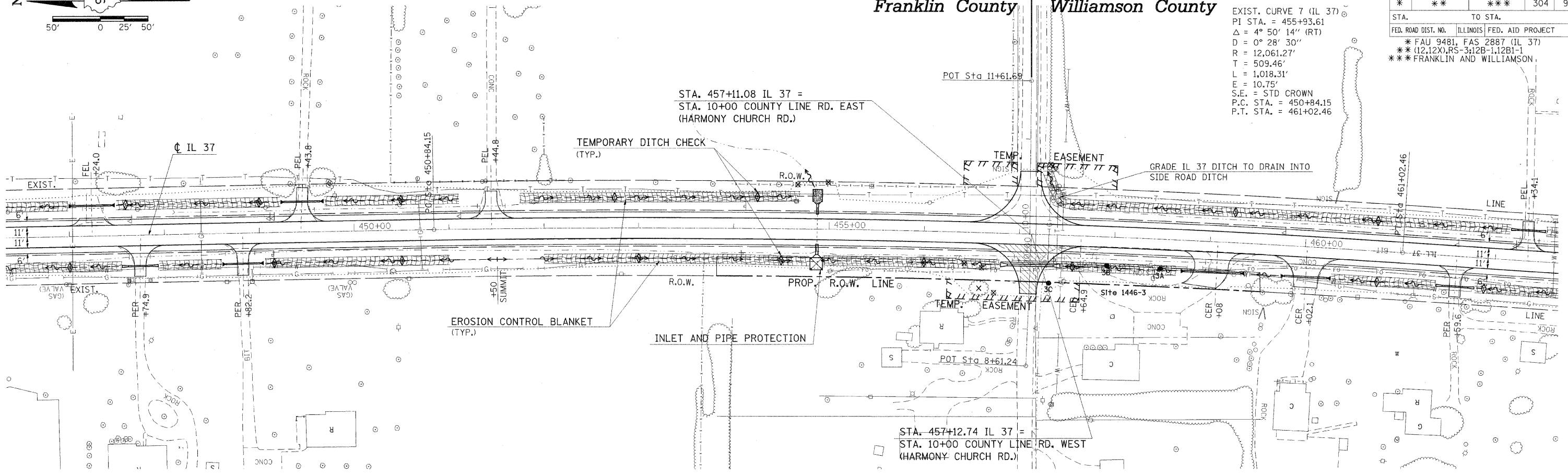
STA.	TO STA.
FED. ROAD DIST. NO.	ILLINOIS FED. AID PROJECT
* FAU 9481, FAS 2887 (IL 37)	
** (12,12X), RS-3, 12B-1, 12B1-1	
*** FRANKLIN AND WILLIAMSON	

EXIST. CURVE 7 (IL 37)  
 PI STA. = 455+93.61  
 $\Delta = 4^\circ 50' 14''$  (RT)  
 $D = 0^\circ 28' 30''$   
 $R = 12,061.27'$   
 $T = 509.46'$   
 $L = 1,018.31'$   
 $E = 10.75'$   
 $S.E. = \text{STD CROWN}$   
 $P.C. STA. = 450+84.15$   
 $P.T. STA. = 461+02.46$

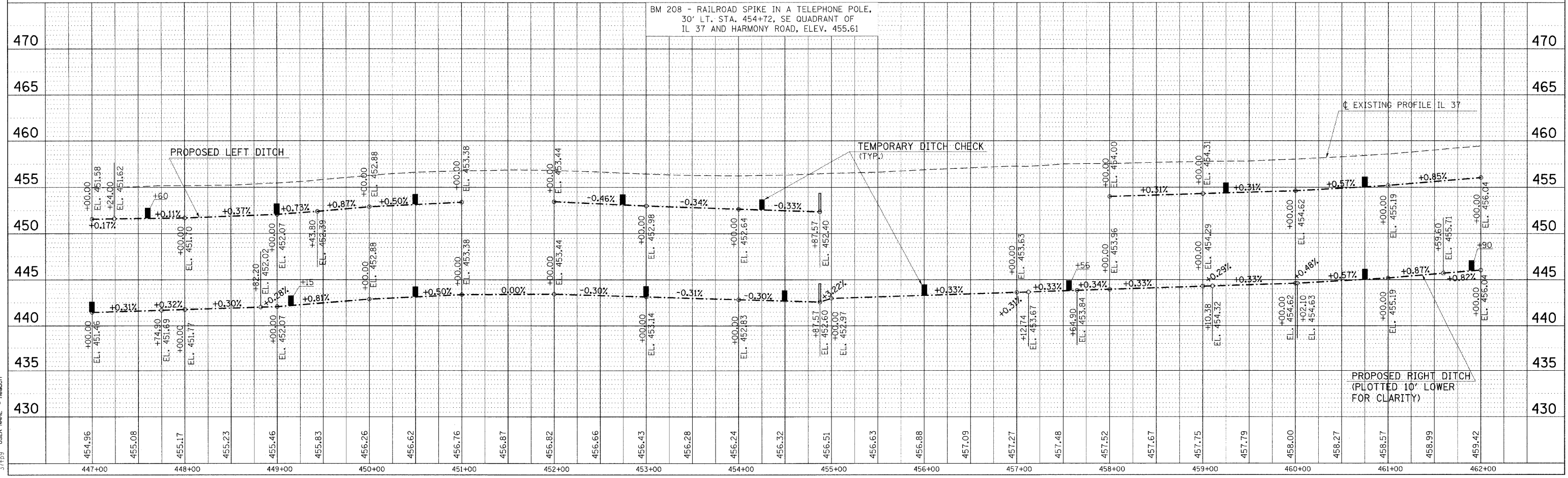
Franklin County Williamson County



DATE	
BY	
REVISION	
NO.	
DESCRIPTION	



BM 208 - RAILROAD SPIKE IN A TELEPHONE POLE,  
 30' LT. STA. 454+72, SE QUADRANT OF  
 IL 37 AND HARMONY ROAD, ELEV. 455.61



PLOT DATE = 12/7/2009  
 PLOT SCALE = 5/8" = 1'-0"  
 PLOT FILE NAME = 371293.dgn  
 USER NAME = headon

**EROSION CONTROL STA. 447+00 TO STA. 462+00**