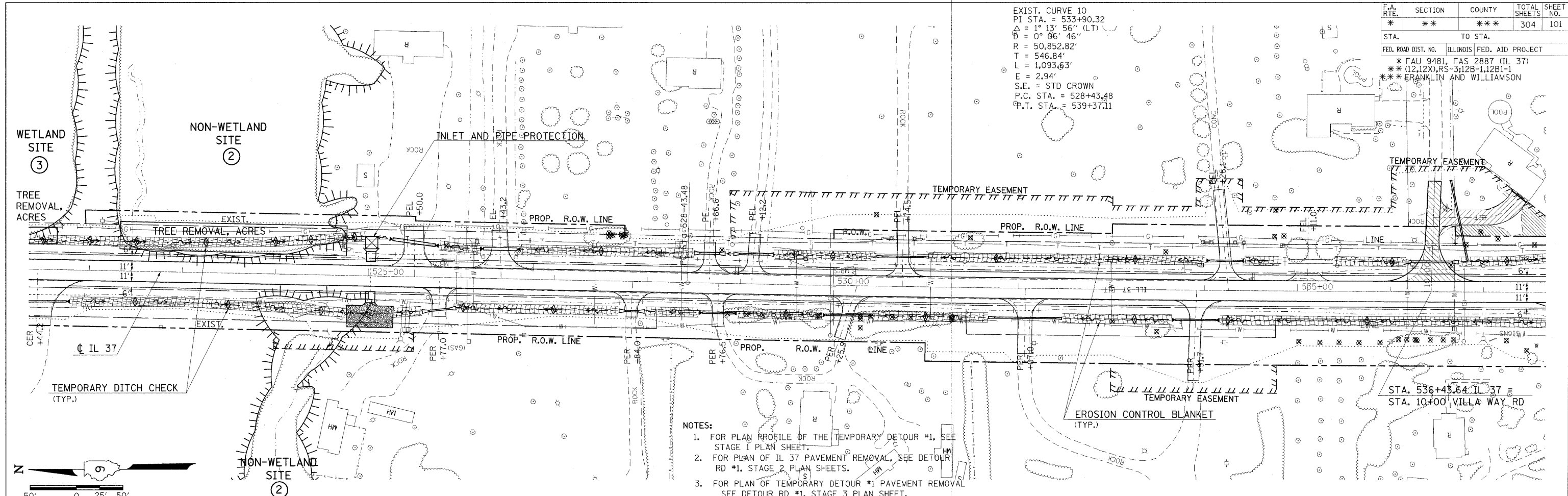
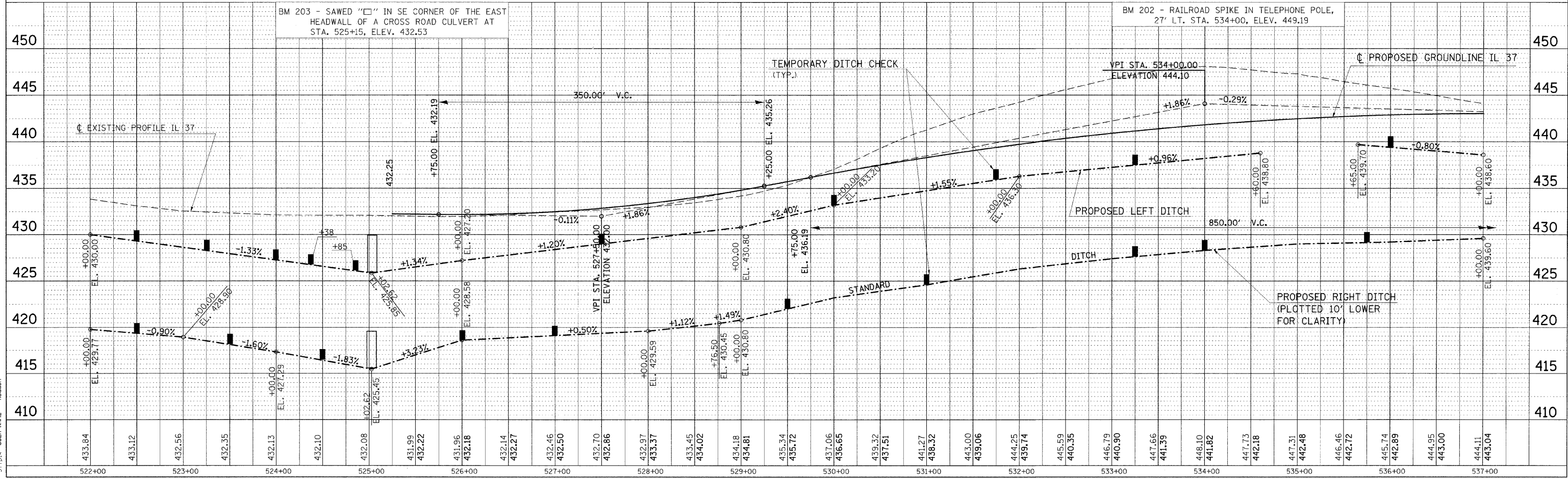


F.A. RTE.	SECTION	COUNTY	TOTAL SHEETS	SHEET NO.
*	**	***	304	101
STA.		TO STA.		
FED. ROAD DIST. NO. ILLINOIS FED. AID PROJECT				
* FAU 9481, FAS 2887 (IL 37)				
** (12.12X) RS-3-12B-1, 12B1-1				
*** FRANKLIN AND WILLIAMSON				

EXIST. CURVE 10  
 PI STA. = 533+90.32  
 $\Delta = 1^{\circ} 13' 56''$  (LT)  
 $\theta = 0^{\circ} 06' 46''$   
 $R = 50,852.82'$   
 $T = 546.84'$   
 $L = 1,093.63'$   
 $E = 2.94'$   
 S.E. = STD CROWN  
 P.C. STA. = 528+43.48  
 P.T. STA. = 539+37.11



- NOTES:
- FOR PLAN PROFILE OF THE TEMPORARY DETOUR #1, SEE STAGE 1 PLAN SHEET.
  - FOR PLAN OF IL 37 PAVEMENT REMOVAL, SEE DETOUR RD #1, STAGE 2 PLAN SHEETS.
  - FOR PLAN OF TEMPORARY DETOUR #1 PAVEMENT REMOVAL SEE DETOUR RD #1, STAGE 3 PLAN SHEET.



EROSION CONTROL STA. 522+00 TO STA. 537+00

PLAN	DATE
BY	
NO. OF SHEETS	
NO. OF THIS SHEET	
NO. OF THIS SHEET CHECKED	
CADY FILE NAME	



377014.dwg  
 3/11/2018  
 PLOT DATE = 2/11/2018  
 FILE NAME = C:\Users\jason\OneDrive\Documents\377014.dwg  
 PLOT SCALE = 1/4" = 1'-0"  
 USER NAME = jason