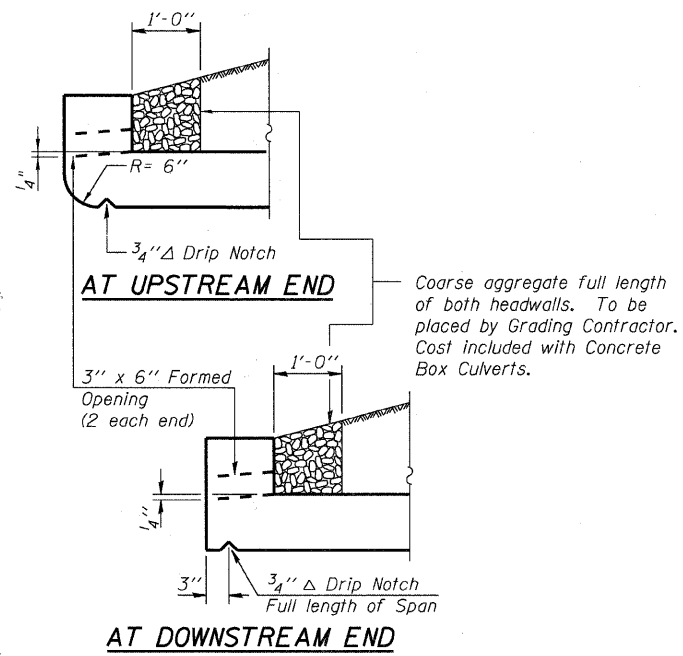


STATE OF ILLINOIS
DEPARTMENT OF TRANSPORTATION

GENERAL NOTES

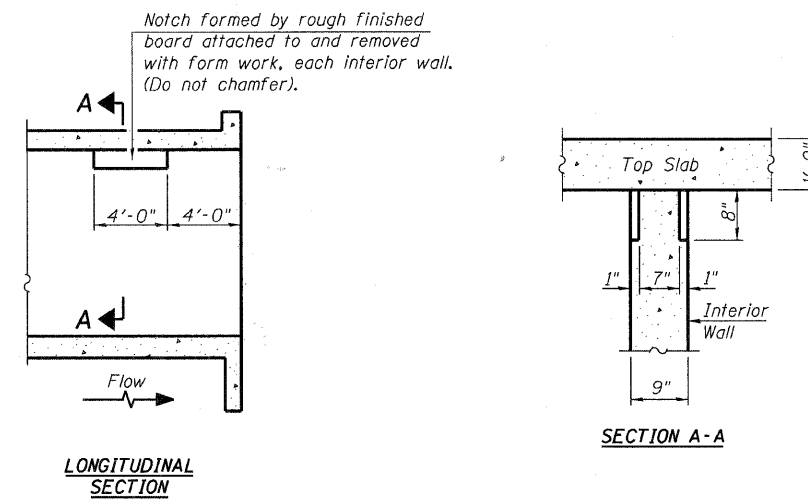
Reinforcement bars shall conform to the requirements of ASTM A 706 Gr. 60. See Special Provisions.
Reinforcement bars designated (E) shall be epoxy coated.
Layout of the slope protection system may be varied to suit ground conditions in the field as directed by the Engineer.
Removal and replacement of weak soils with Stone Riprap Class A1 may be required beneath the culvert. The Engineer will determine the required depth following excavation to plan grade.
All construction joints shall be bonded.
Precast culvert alternate is not allowed.



DRAIN DETAIL

TOTAL BILL OF MATERIAL

ITEM	UNIT	TOTAL
Removal and Disposal of Unsuitable Material	Cu. Yd.	118
Stone Riprap, Class A4	Sq. Yd.	189
Stone Riprap, Class A1	Ton	223
Filter Fabric	Sq. Yd.	189
Removal of Existing Structures No. 2	Each	1
Reinforcement Bars, Epoxy Coated	Pound	34,150
Bar Splicers	Each	165
Temporary Sheet Piling	Sq. Ft.	1,721
Name Plates	Each	1
Concrete Box Culverts	Cu. Yd.	191.1
Steel Plate Beam Guardrail, Attached to Structures	Foot	50



**PHOEBE NESTING
SITE DETAILS**
(Downstream End Only)

GENERAL STRUCTURE DATA
SN 028-2017

DESIGNED	AMS
CHECKED	JMH
DRAWN	AEC
CHECKED	JMH

09/25/09



SHEET NO. 2	F.A.U. RTE.	SECTION	COUNTY	TOTAL SHEETS	SHEET NO.
	9481	12B-1	FRANKLIN	304	120
8 SHEETS	SN 028-2017		CONTRACT NO. 98823		
FED. ROAD DIST. NO. 7 ILLINOIS FED. AID PROJECT					