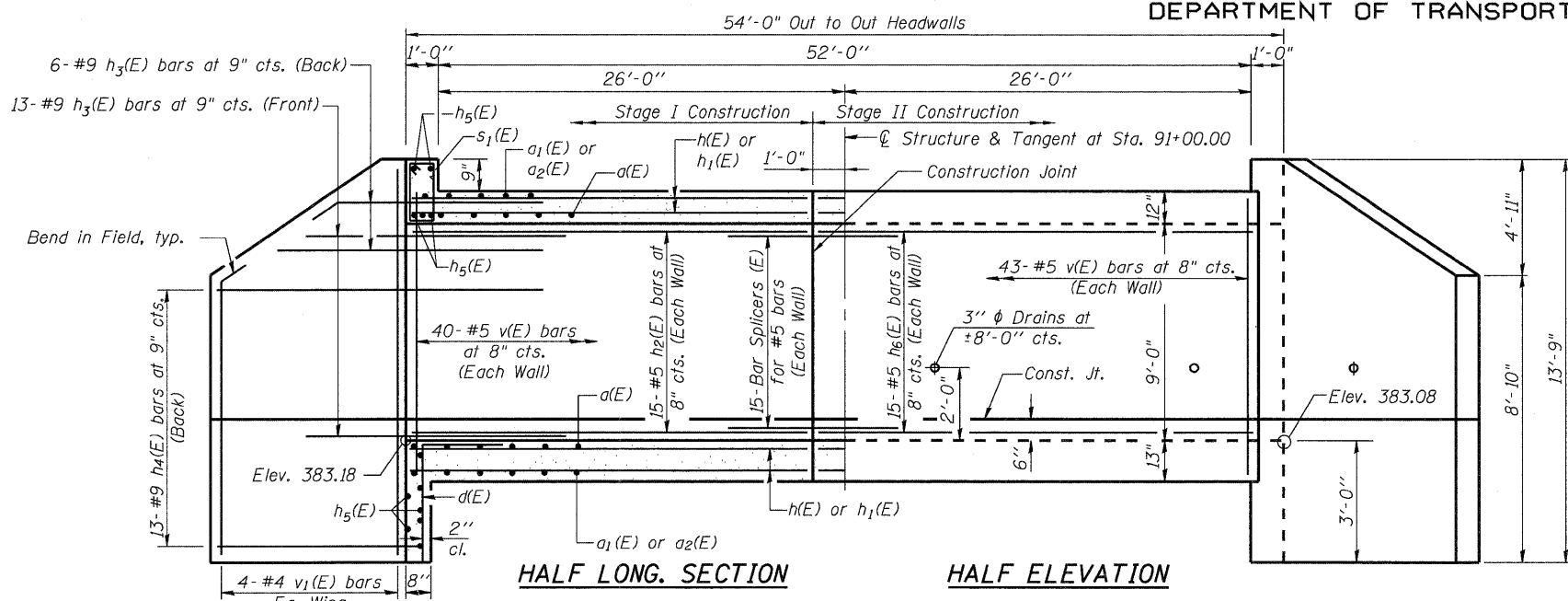


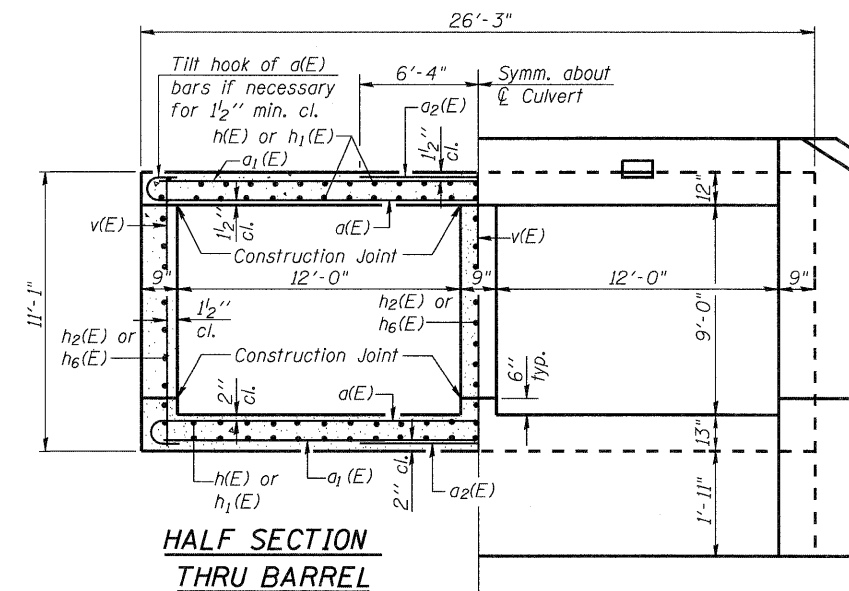
STATE OF ILLINOIS
DEPARTMENT OF TRANSPORTATION



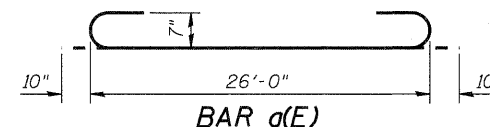
HALF LONG. SECTION

HALF ELEVATION

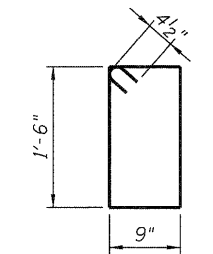
BAR d(E)



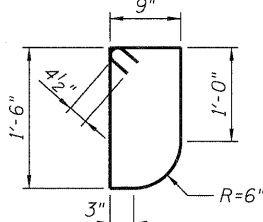
HALF END ELEVATION



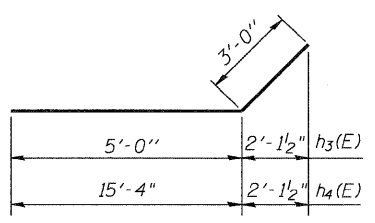
BAR a(E)



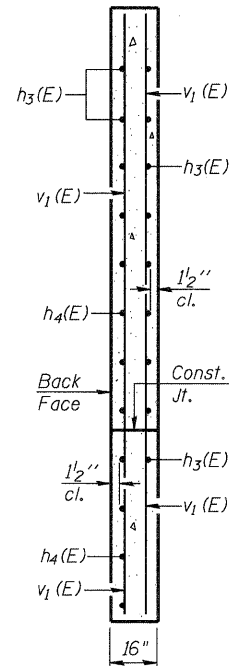
BARS s1(E)



BARS s2(E)



BARS h3(E) & h4(E)



SECTION A-A

BILL OF MATERIAL

Bar	No.	Size	Length	Shape
a(E)	146	#7	27'-8"	
a1(E)	96	#7	26'-0"	
a2(E)	92	#7	12'-8"	
d(E)	52	#4	4'-6"	
h(E)	120	#5	25'-8"	
h1(E)	120	#5	27'-9"	
h2(E)	45	#5	25'-8"	
h3(E)	76	#9	8'-0"	
h4(E)	52	#9	18'-4"	
h5(E)	14	#6	26'-10"	
h6(E)	45	#5	27'-9"	
v(E)	253	#5	10'-10"	
v1(E)	16	#4	13'-6"	
s1(E)	26	#4	5'-3"	
s2(E)	26	#4	5'-1"	
Concrete Box Culverts			Cu. Yd.	191.1
Reinforcement Bars, Epoxy Coated			Pound	34,150

CULVERT DETAILS
SN 028-2017

DESIGNED AMS
CHECKED JMH
DRAWN AEC
CHECKED JMH



Notes:
A distance of 7'-3" of the barrel, half the length of the wingwall, shall be poured monolithically with each wingwall.

SHEET NO. 5 8 SHEETS	F.A.U. RTE. 9481	SECTION 12B-1	COUNTY FRANKLIN	TOTAL SHEETS 304	SHEET NO. 123
	SN 028-2017		CONTRACT NO. 98823		
FED. ROAD DIST. NO. 7 ILLINOIS FED. AID PROJECT					