

STATE OF ILLINOIS
DEPARTMENT OF TRANSPORTATION

GENERAL NOTES

Fasteners shall be AASHTO M164 Type 1, mechanically galvanized bolts. Bolts $\frac{7}{8}$ in. ϕ , holes $\frac{15}{16}$ in. ϕ , unless otherwise noted.

Calculated weight of Structural Steel = 126,540 lbs. of Grade 50 and 8,880 lbs. of Grade 36.

No field welding is permitted except as specified in the contract documents.

Reinforcement bars shall conform to the requirements of ASTM A 706 Gr 60. See Special Provisions

Reinforcement bars designated (E) shall be epoxy coated.

Bearing seat surfaces shall be constructed or adjusted to their designated elevations within a tolerance of $\frac{1}{8}$ inch (0.01 ft.). Adjustment shall be made either by grinding the surface or by shimming the bearings.

The Inorganic Zinc Rich Primer / Acrylic / Acrylic Paint System shall be used for shop and field painting of new structural steel except where otherwise noted.

The color of the final finish coat for all interior steel surfaces shall be Gray, Munsell No. 5B 7/1. The color of the final finish coat for the exterior and bottom flange of the fascia beams shall be Interstate Green, Munsell No. 7.5 G 4/8. See Special Provision for "Cleaning and Painting New Metal Structures".

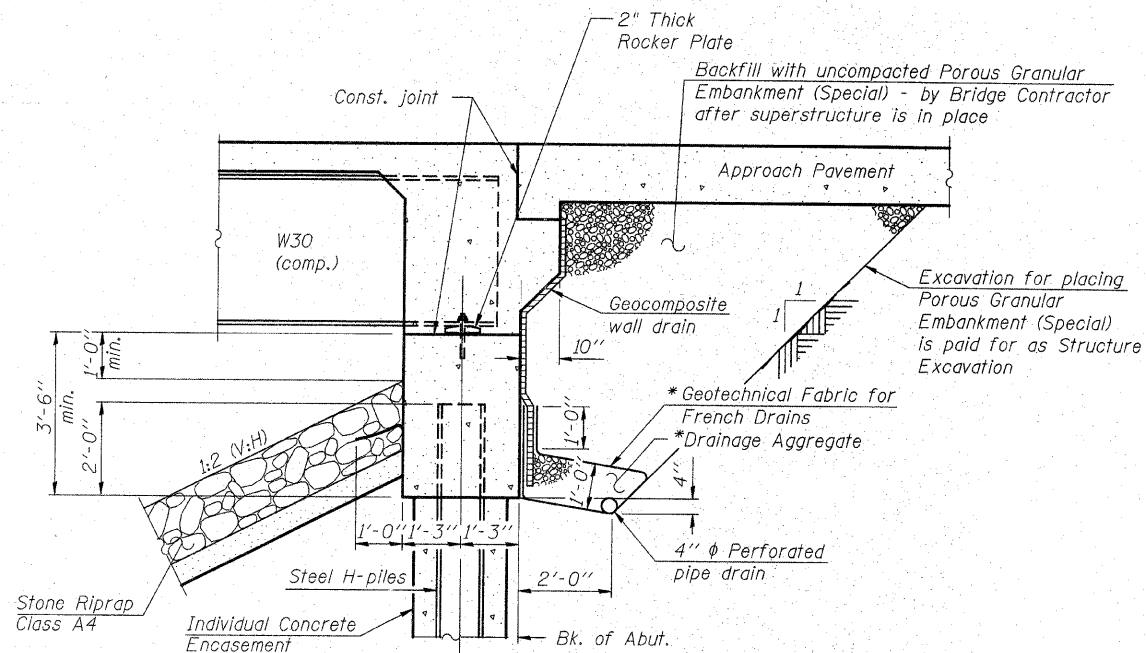
Layout of slope protection system may be varied in the field to suit ground conditions as directed by the Engineer.

In lieu of the hammer selection criteria and use of the FHWA Modified Gates formula specified in Section 512 of the Standard Specifications, the Contractor shall conduct a wave equation analysis to establish the driving criteria at all pile foundations which specify a nominal required bearing above 600 kips. The analysis and calculations shall be submitted to the Engineer for approval.

Slipforming of the parapets is not allowed.

TOTAL BILL OF MATERIAL

ITEM	UNIT	SUPER	SUB	TOTAL
Porous Granular Embankment, Special	Cu. Yd.		100	100
Stone Riprap, Class A4	Sq. Yd.		862	862
Filter Fabric	Sq. Yd.		862	862
Removal of Existing Structures No. 1	Each			1
Structure Excavation	Cu. Yd.		664	664
Floor Drains	Each	20		20
Concrete Structures	Cu. Yd.		181.1	181.1
Concrete Superstructure	Cu. Yd.	374.2		374.2
Bridge Deck Grooving	Sq. Yd.	934		934
Concrete Encasement	Cu. Yd.		19.6	19.6
Protective Coat	Sq. Yd.	1,147	26	1,173
Furnishing and Erecting Structural Steel	L. Sum	1		1
Stud Shear Connectors	Each	4,158		4,158
Reinforcement Bars, Epoxy Coated	Pound	84,120	18,500	102,620
Bar Splicers	Each	728	156	884
Furnishing Steel Piles HP14x89	Foot		1,789	1,789
Driving Piles	Foot		1,789	1,789
Test Pile Steel HP14x89	Each		3	3
Temporary Sheet Piling	Sq. Ft.		1,128	1,128
Name Plates	Each	1		1
Anchor Bolts, 1"	Each		56	56
Geocomposite Wall Drain	Sq. Yd.		77	77
Pipe Underdrains for Structures 4"	Foot		144	144
Mechanical Splice	Each		60	60
Underwater Structure				
Excavation Protection, Location 1	Each		1	1
Underwater Structure				
Excavation Protection, Location 2	Each		1	1



SECTION THRU INTEGRAL ABUTMENT

* Included in the cost of Pipe Underdrains for Structures 4".

Note:

All drainage system components shall extend to 2'-0" from the end of each wingwall except an outlet pipe shall extend until intersecting with the side slopes. The pipes shall drain into concrete headwalls. (See Article 601.05 of the Standard Specifications and Highway Standard 60110).

DESIGNED	RLM
CHECKED	AMS
DRAWN	PRC
CHECKED	RLM

10/06/09



GENERAL STRUCTURE DATA
SN 028-0078

SHEET NO. 2 29 SHEETS	F.A.U. RTE.	SECTION	COUNTY	TOTAL SHEETS	SHEET NO.
	9481	12B1-1	FRANKLIN	304	128
SN 028-0078			CONTRACT NO. 98823		
FED. ROAD DIST. NO. 7 ILLINOIS FED. A.D PROJECT					