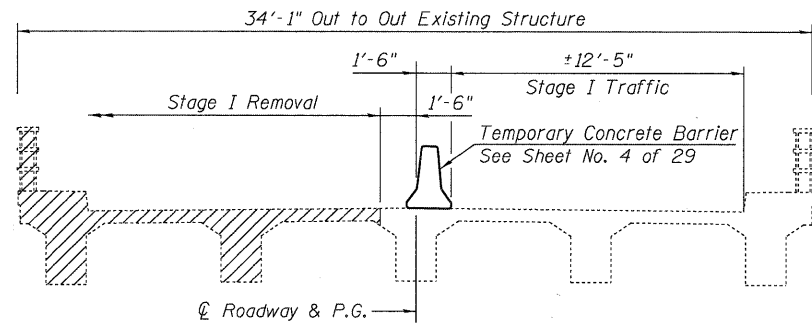
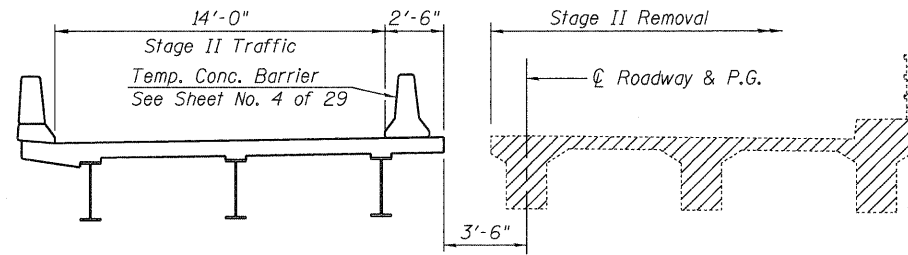


STATE OF ILLINOIS
DEPARTMENT OF TRANSPORTATION

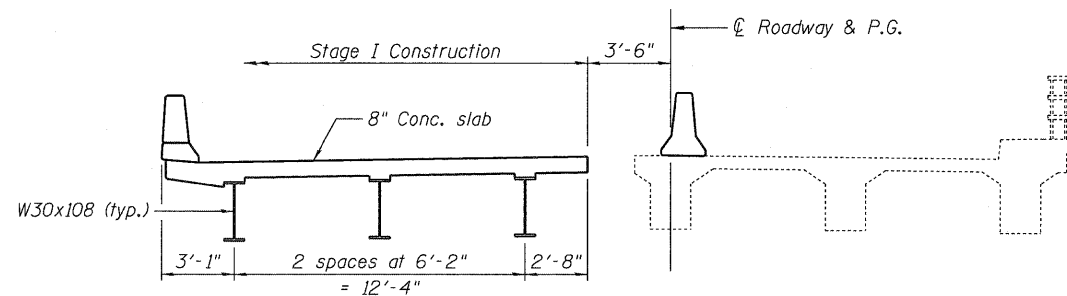


STAGE I REMOVAL
(Looking upstation)

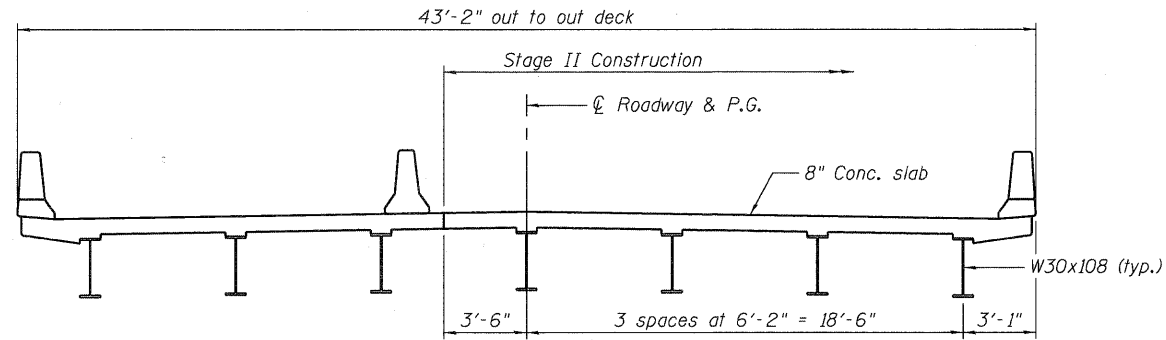


STAGE II REMOVAL
(Looking upstation)

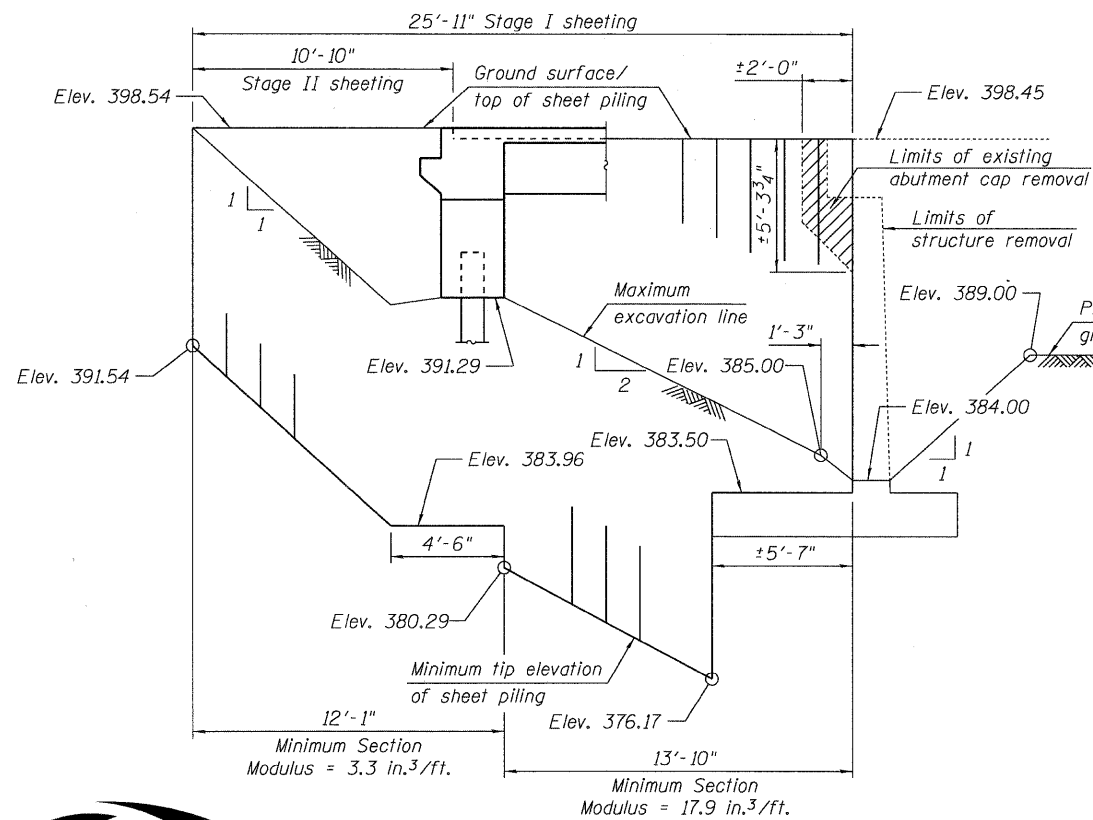
Notes:
If the Contractor chooses to alter the temporary cantilevered sheet piling design requirements shown on the plans, a design submittal including plan details and calculations will be required for review and acceptance by the Engineer.
The Contractor shall connect the first sheet to the existing abutment wall to ensure stability of sheets driven to the top of the existing footing. The sheet pile connection to the existing abutment cap will require removal of a portion of the abutment cap. Sequence of construction and connection shall be reviewed and accepted by the Engineer and included in the cost for Temporary Sheet Piling.



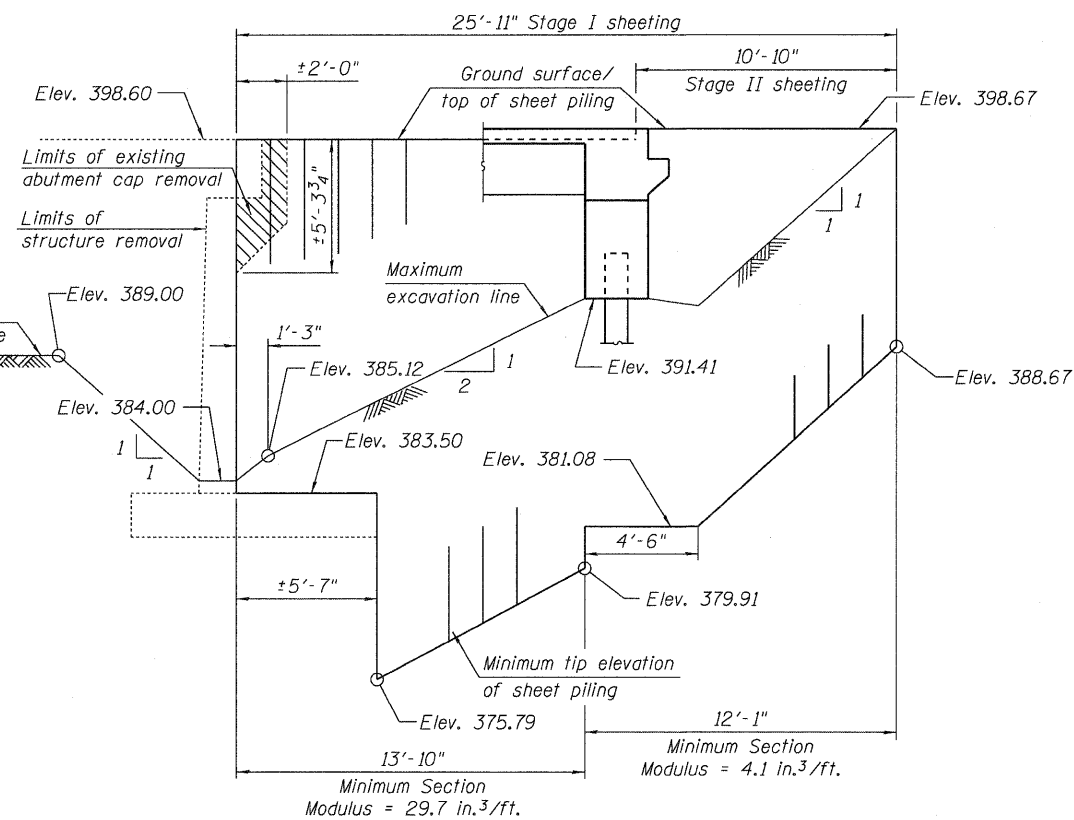
STAGE I CONSTRUCTION
(Looking upstation)



STAGE II CONSTRUCTION
(Looking upstation)



TEMPORARY SHEET PILING
(at North Abutment)



TEMPORARY SHEET PILING
(at South Abutment)

BILL OF MATERIAL

Item	Unit	Total
Temporary Sheet Piling	Sq. Ft.	1128

STAGE CONSTRUCTION DETAILS
SN 028-0078

DESIGNED	AMS
CHECKED	JMH
DRAWN	AEC
CHECKED	AMS



09/25/09

SHEET NO. 3 29 SHEETS	F.A.U. RTE.	SECTION	COUNTY	TOTAL SHEETS	SHEET NO.
	9481	12B1-1	FRANKLIN	304	129
	SN 028-0078		CONTRACT NO. 98823		
FED. ROAD DIST. NO. 7 ILLINOIS FED. AID PROJECT					