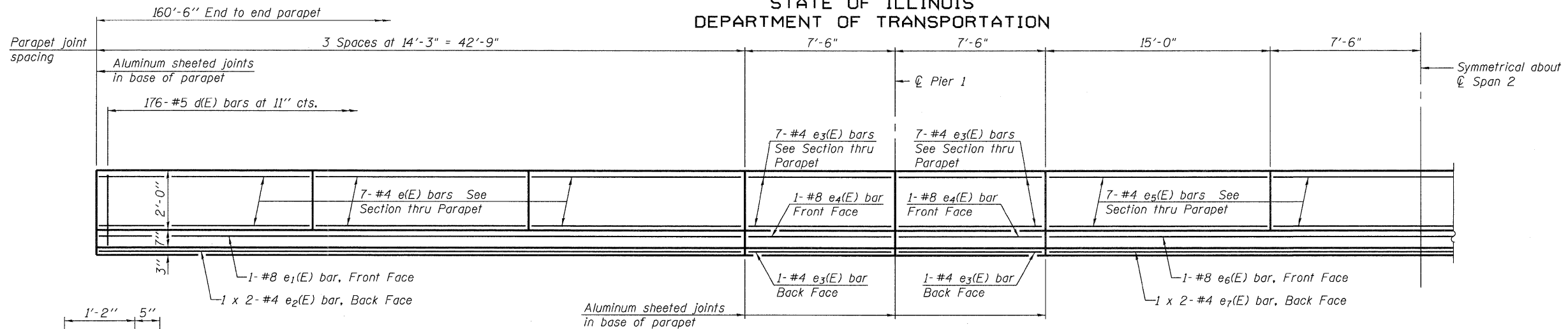


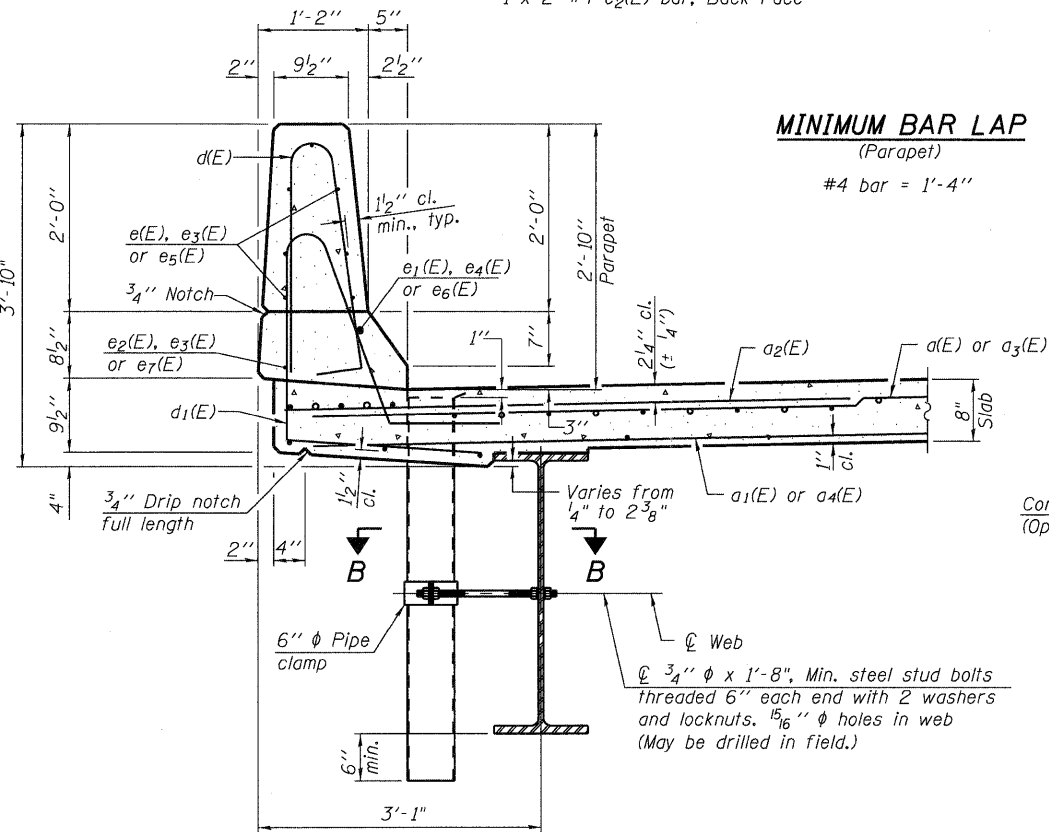
STATE OF ILLINOIS
DEPARTMENT OF TRANSPORTATION



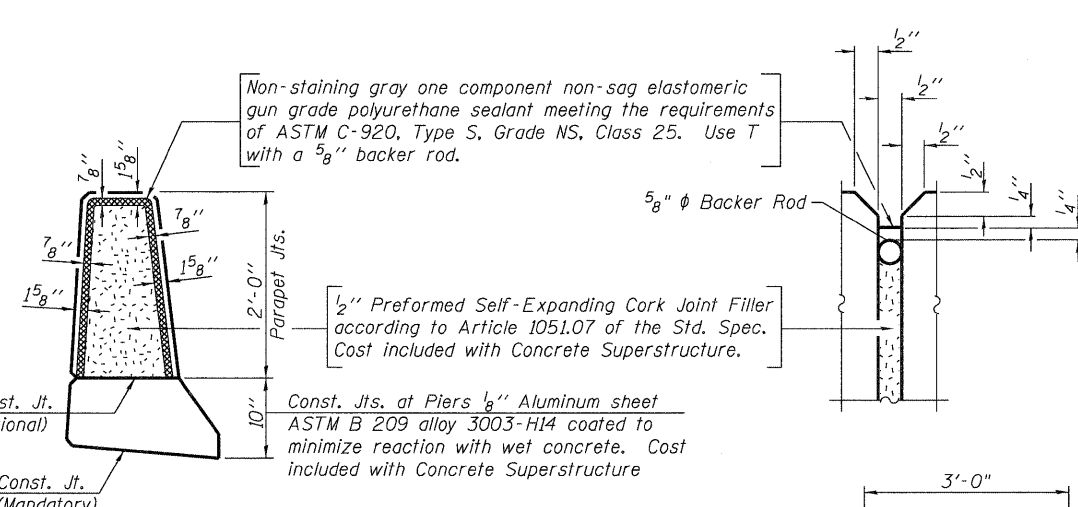
INSIDE ELEVATION OF PARAPET

SUPERSTRUCTURE
BILL OF MATERIAL

Bar	No.	Size	Length	Shape
a(E)	297	#5	17'-7"	—
a1(E)	193	#5	17'-4"	—
a2(E)	594	#6	6'-0"	—
a3(E)	297	#5	24'-8"	—
a4(E)	193	#5	24'-5"	—
b(E)	184	#5	41'-4"	—
b1(E)	86	#6	32'-10"	—
b2(E)	180	#5	33'-5"	—
d(E)	352	#5	5'-7"	┘
d1(E)	352	#5	7'-11"	┘
e(E)	84	#4	14'-0"	—
e1(E)	4	#8	42'-6"	—
e2(E)	8	#4	21'-11"	—
e3(E)	64	#4	7'-3"	—
e4(E)	8	#8	7'-3"	—
e5(E)	42	#4	14'-9"	—
e6(E)	2	#8	44'-9"	—
e7(E)	4	#4	23'-1"	—
m(E)	10	#6	17'-9"	—
m1(E)	12	#6	7'-10"	—
m2(E)	10	#6	5'-10"	—
m3(E)	4	#6	2'-9"	—
m4(E)	2	#6	2'-3"	—
m5(E)	2	#6	3'-3"	—
m6(E)	10	#6	24'-10"	—
m7(E)	16	#6	8'-4"	—
s(E)	84	#5	6'-11"	┘
s1(E)	72	#4	9'-4"	┘
v(E)	86	#5	3'-4"	┘
Reinforcement Bars, Epoxy Coated		Pound	55,250	
Concrete Superstructure		Cu. Yd.	243.5	
Bridge Deck Grooving		Sq. Yd.	678	
Protective Coat		Sq. Yd.	847	

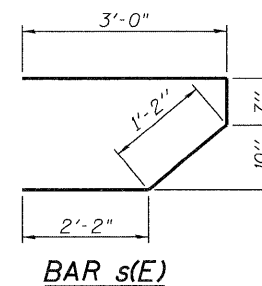


SECTION THRU PARAPET

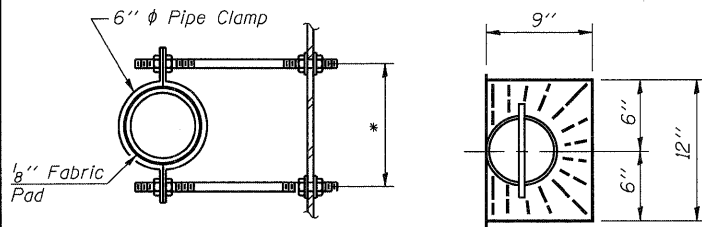


PARAPET JOINT DETAILS

Notes:
All edges of concrete structures shall have a standard 3/4" chamfer, except as noted.
The exterior surfaces of the floor drains shall be painted with the finish coat as specified in the special provisions for Cleaning and Painting New Metal Structures. The exterior surfaces of the drains shall be cleaned according to Society of Protective Coatings Spec. SSPC-SPI prior to painting.
Fiberglass pipe shall conform to ASTM D 2996, with short-time rupture strength hoop tensile stress of 30,000 p.s.i. minimum.
The clamping device and inserts shall be galvanized according to AASHTO M 232.
Slipforming of parapets is not allowed.

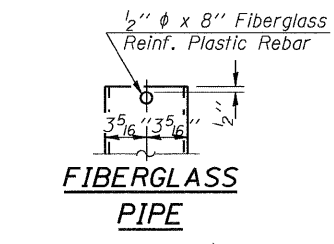


BAR s(E)

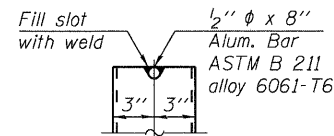


SECTION B-B
*Dimension as required by Pipe Clamp

TOP PLAN

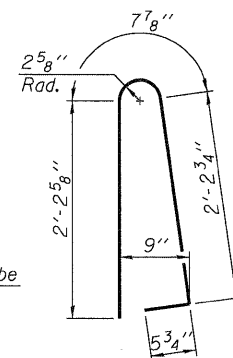


FIBERGLASS PIPE

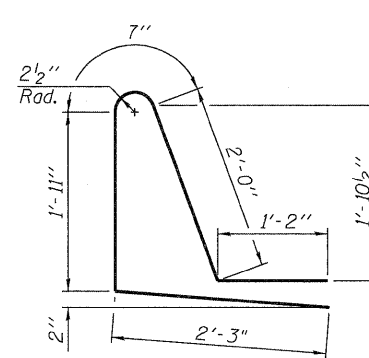


ALUMINUM TUBE

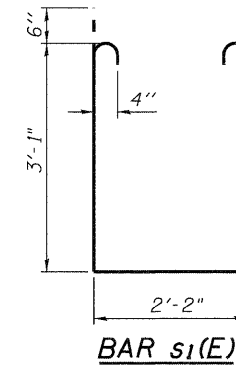
TOP PLAN
(Showing Aluminum Tube)



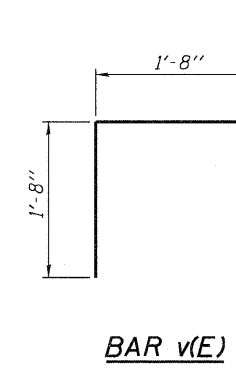
BAR d(E)



BAR d1(E)



BAR s1(E)



BAR v(E)

SUPERSTRUCTURE DETAILS
SN 028-0078

Note:
For details of bar splicers, see sheet 25 of 29.

DESIGNED	RLM
CHECKED	AMS
DRAWN	PRC
CHECKED	RLM



09/25/09

SHEET NO. 12 29 SHEETS	F.A.U. RTE. 9481	SECTION 12B1-1	COUNTY FRANKLIN	TOTAL SHEETS 304	SHEET NO. 138
	SN 028-0078		CONTRACT NO. 98823		
FED. ROAD DIST. NO. 7 ILLINOIS FED. AID PROJECT					