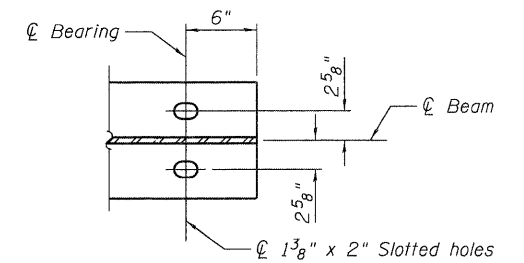
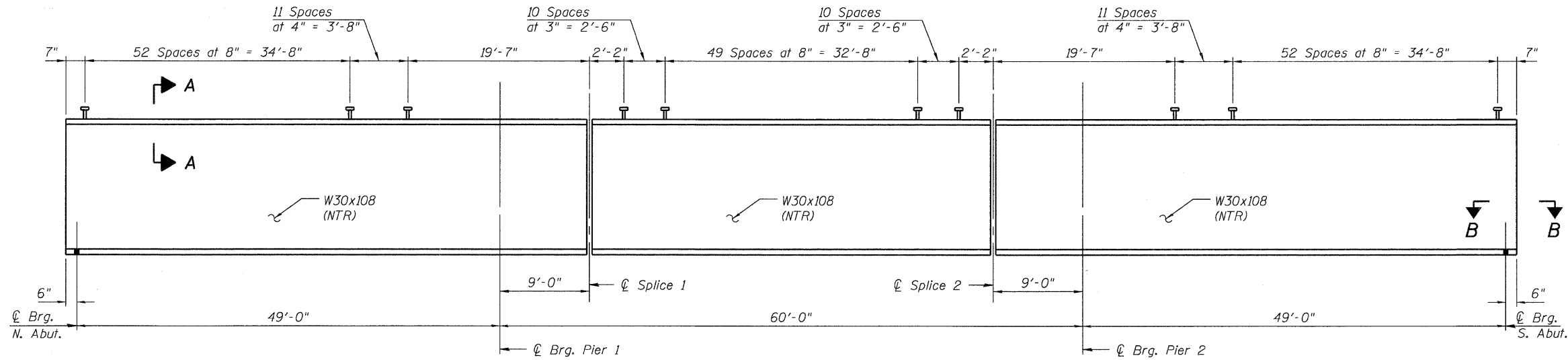


STATE OF ILLINOIS
DEPARTMENT OF TRANSPORTATION



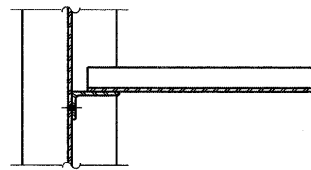
SECTION B-B
(S. Abut. end shown
N. Abut. end similar)

***TOP OF BEAM ELEVATIONS**

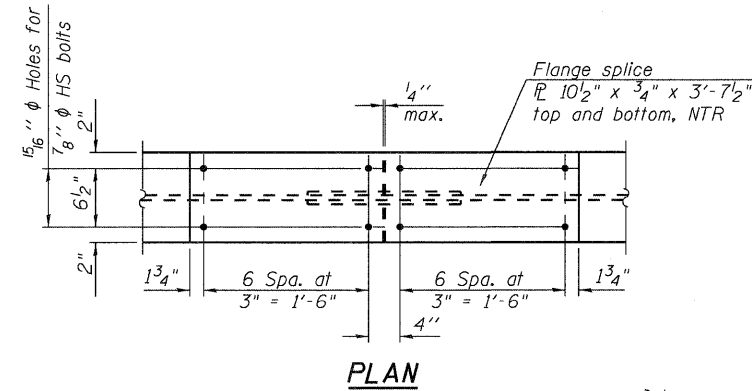
Location	Gdr. #1	Gdr. #2	Gdr. #3	Gdr. #4	Gdr. #5	Gdr. #6	Gdr. #7
℄ Brg. at North Abut.	397.46	397.58	397.68	397.78	397.68	397.58	397.46
℄ Brg. at Pier 1	397.49	397.62	397.72	397.82	397.72	397.62	397.49
℄ Splice 1	397.50	397.63	397.73	397.82	397.73	397.63	397.50
℄ Splice 2	397.53	397.66	397.76	397.86	397.76	397.66	397.53
℄ Brg. at Pier 2	397.54	397.67	397.77	397.86	397.77	397.67	397.54
℄ Brg. at South Abut.	397.58	397.71	397.81	397.90	397.81	397.71	397.58

* For fabrication only

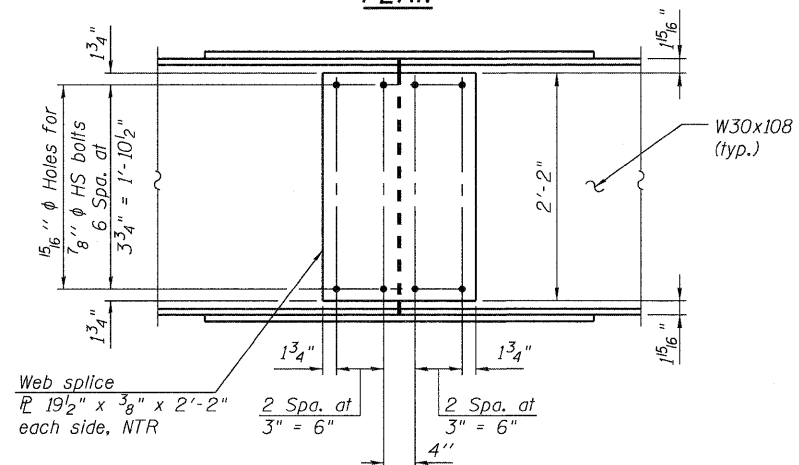
BEAM ELEVATION
(7 Required)



SECTION C-C



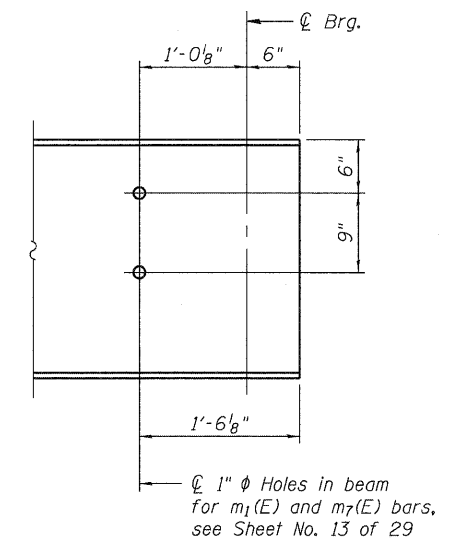
PLAN



ELEVATION

SPLICE DETAIL
(14 Required)

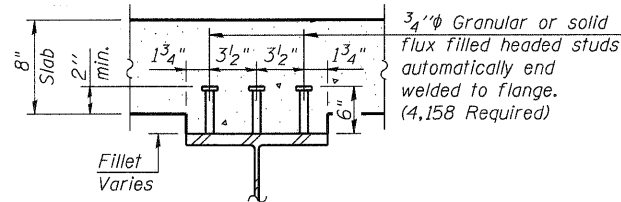
Note:
Load carrying components designated "NTR" shall conform to the Supplemental Requirements for Notch Toughness, Zone 2.



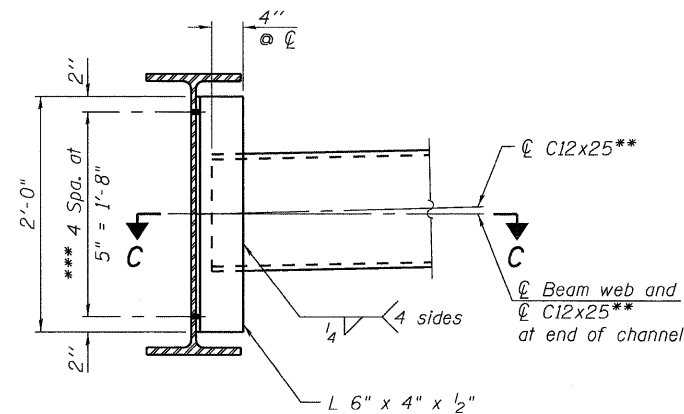
END OF GIRDER ELEVATION

(S. Abut. end shown
N. Abut. end similar)

Note:
Beams and splice plates shall be AASHTO M270 Grade 50.
Diaphragms and diaphragm connection angles shall be AASHTO M270 Grade 36.



SECTION A-A



INTERIOR DIAPHRAGM

(36 Required)

Notes:
Two hardened washers required for each set of oversized holes with one washer on each side of the connection.
See the Framing Plan on Sheet No. 16 of 29 for locations of interior diaphragms.
** C12x30 can be used as an alternate channel size. Alternate channels are permitted to facilitate material acquisition. Calculated weight of structural steel is based on the lighter section. The alternate, if utilized, shall be provided at no extra cost to the Department.
*** 3/4" diameter HS bolts, 15/16" diameter holes

DESIGNED	RLM
CHECKED	AMS
DRAWN	PRC
CHECKED	RLM

09/25/09



BEAM DETAILS
SN 028-0078

SHEET NO. 17	F.A.U. RTE.	SECTION	COUNTY	TOTAL SHEETS	SHEET NO.
	9481	12B1-1	FRANKLIN	304	143
29 SHEETS	SN 028-0078		CONTRACT NO. 98823		
	FED. ROAD DIST. NO. 7		ILLINOIS FED. AID PROJECT		