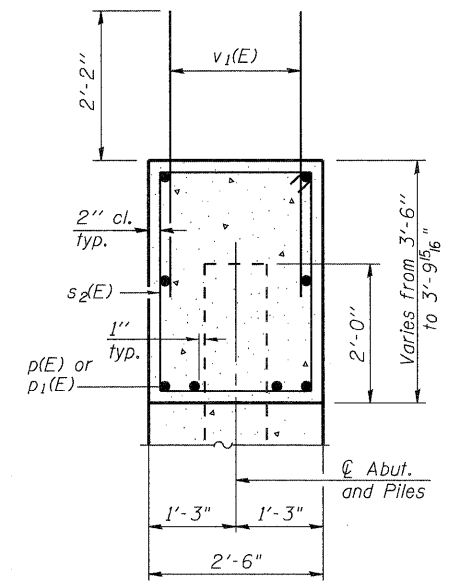
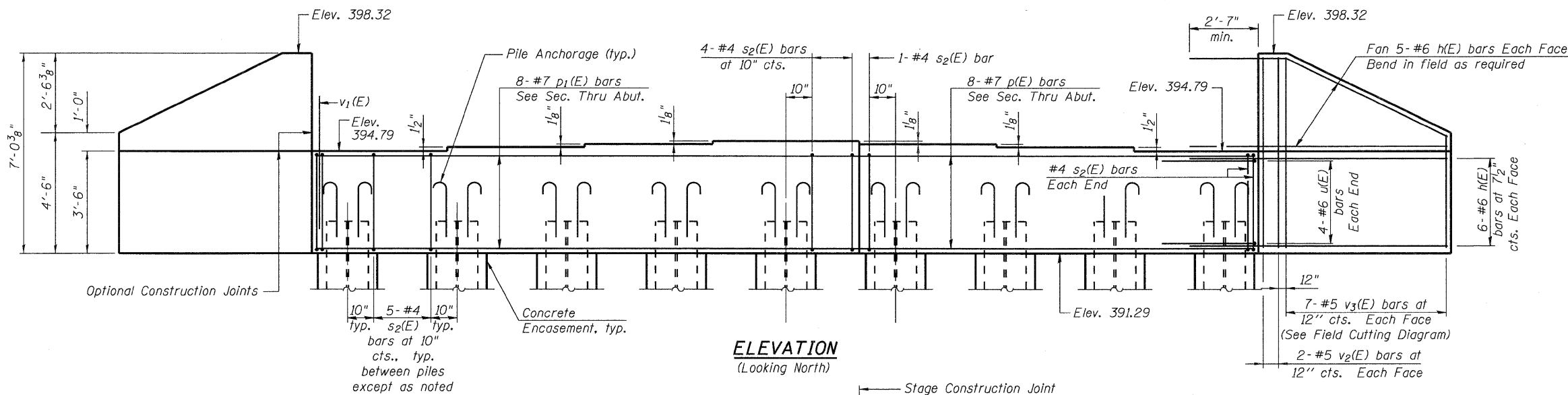


STATE OF ILLINOIS
DEPARTMENT OF TRANSPORTATION

Notes:
Pour steps monolithically with cap.
Space reinforcement in cap to miss anchor bolts.

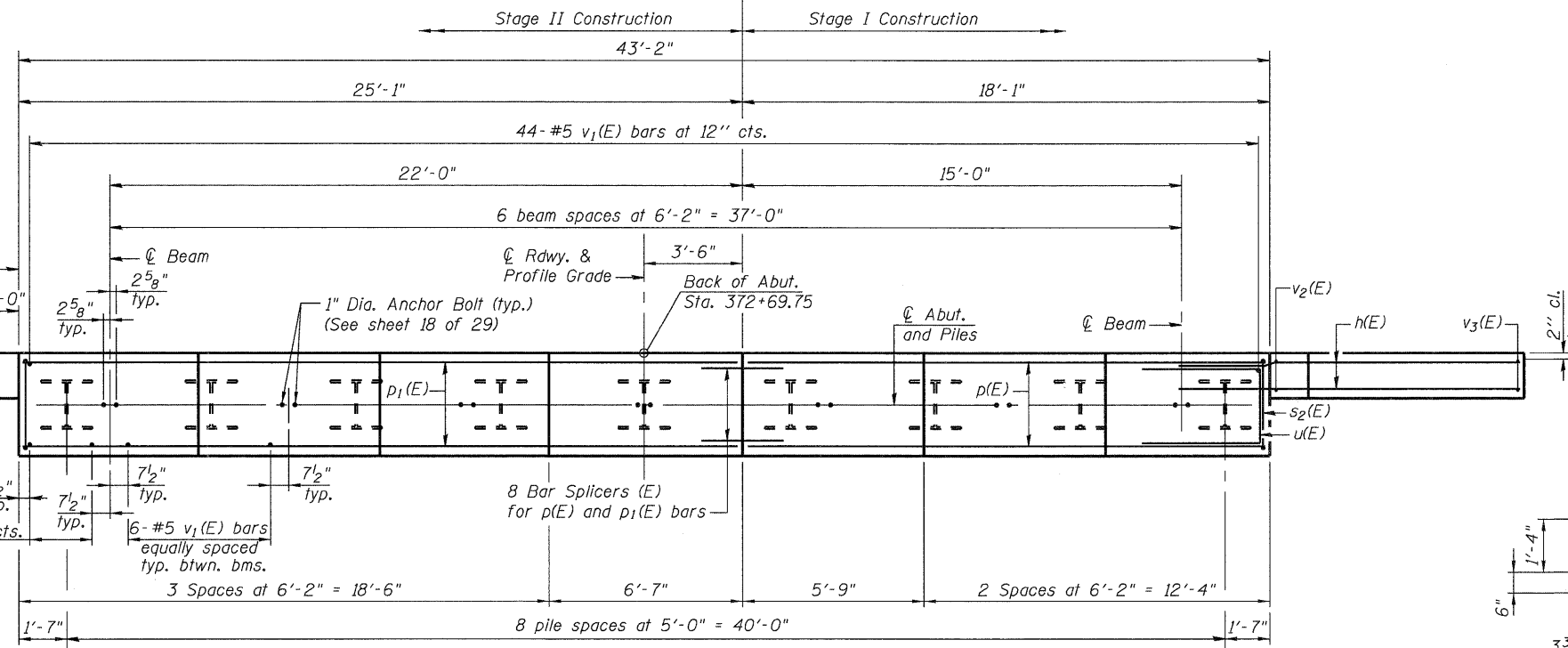


SEC. THRU ABUT.

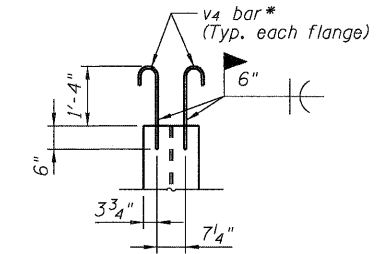
BILL OF MATERIAL

Bar	No.	Size	Length	Shape
h(E)	44	#6	11'-0"	—
p(E)	8	#7	17'-8"	—
p1(E)	8	#7	24'-9"	—
s2(E)	44	#4	11'-5"	□
u(E)	8	#6	7'-3"	—
v1(E)	86	#5	4'-4"	—
v2(E)	8	#5	6'-8"	—
v3(E)	14	#5	10'-10"	—
v4	36	#5	2'-5"	—
Structure Excavation		Cu. Yd.	179	
Concrete Structures		Cu. Yd.	18.3	
Protective Coat		Sq. Yd.	13	
Concrete Encasement		Cu. Yd.	4.9	
Reinforcement Bars, Epoxy Coated		Pound	2,450	
Furnishing Steel Piles HP14x89		Foot	472	
Driving Piles		Foot	472	
Test Steel Pile HP14x89		Each	1	

For details of Bar Splicers, see sheet 25 of 29.
For details of piles and Concrete Encasement, see sheet 24 of 29.



PLAN



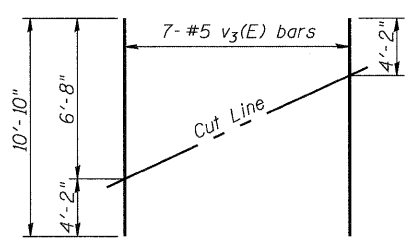
PILE ANCHORAGE

* Cost of v4 bars is included with Furnishing Steel Piles HP14x89.

PILE DATA

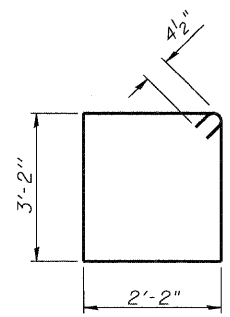
Type: Steel HP14x89
Nominal Required Bearing: 705 Kips
Factored Resistance Available: 353 Kips
Est. Length: 59 ft
No. Production Piles: 8
No. Test Piles: 1

DESIGNED	RLM
CHECKED	AMS
DRAWN	AEC
CHECKED	RLM

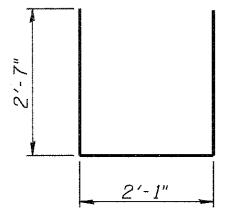


FIELD CUTTING DIAGRAM

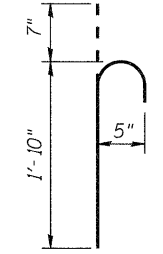
Order v3(E) full length. Cut as shown and use remainder of bars in opposite face.



BAR s2(E)



BAR u(E)



BAR v4*

NORTH ABUTMENT DETAILS
SN 028-0078

SHEET NO. 19 29 SHEETS	F.A.U. RTE.	SECTION	COUNTY	TOTAL SHEETS	SHEET NO.
	9481	12B1-1	FRANKLIN	304	145
	SN 028-0078		CONTRACT NO. 98823		
FED. ROAD DIST. NO. 7 ILLINOIS FED. AID PROJECT					

09/25/09