

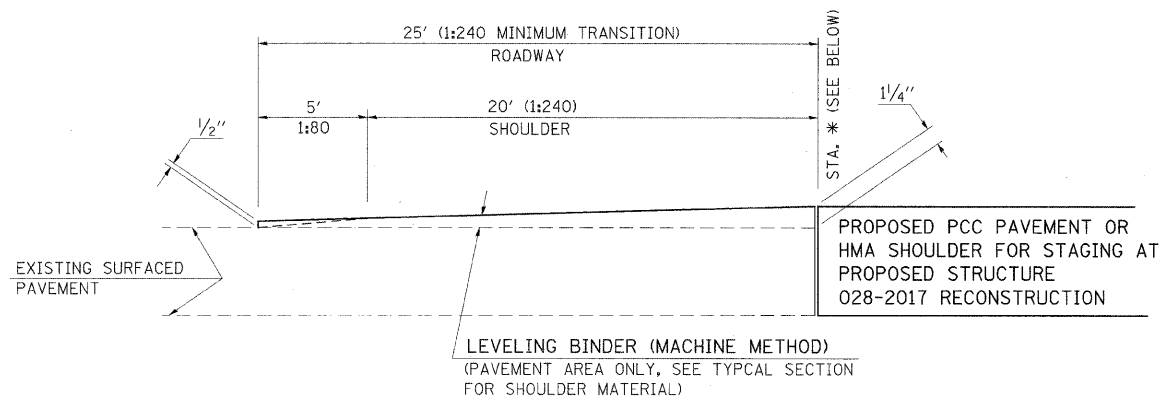
F.A.P. RTE	SECTION	COUNTY	TOTAL SHEETS	SHEET NO
*	**	***	304	172

STA.	TO STA.
FED. ROAD DIST. NO. -	ILLINOIS
	FED. AID PROJECT

* FAU 94B1, FAS 2887 (IL 37)
 ** (12,12X),RS-3;12B-1,12B1-1
 *** FRANKLIN AND WILLIAMSON

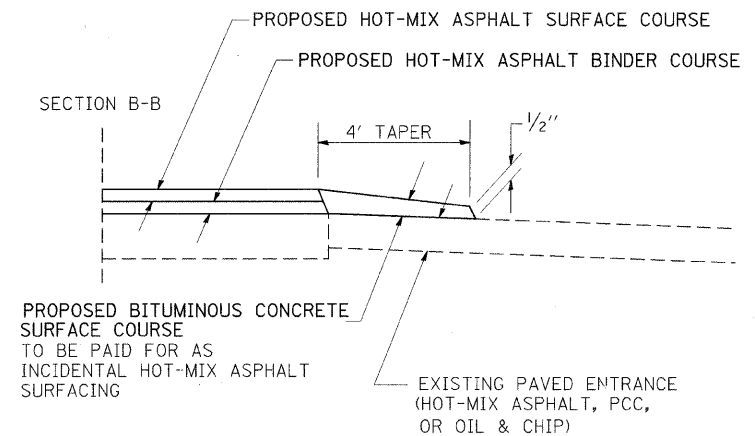
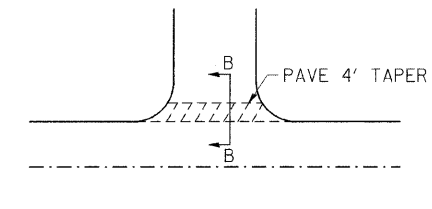
SHOULDER AND PAVEMENT THICKNESS TRANSITION AT PROPOSED DOUBLE BOX

(STAGE 1 AND 2 CONSTRUCTION)



*** TO BE USED:**
 (BOTH LANES)
 STA. 90+71
 STA. 91+29

DETAIL OF HOT-MIX ASPHALT, PCC, OR OIL AND CHIP PRIVATE OR COMMERCIAL ENTRANCE

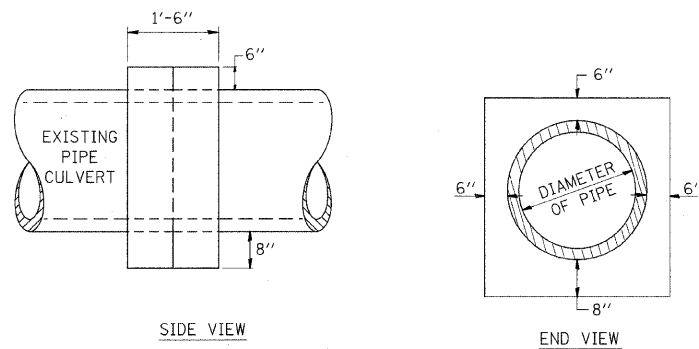


PREPARATION OF EXISTING SURFACE AND ANY EXCAVATION FOR ENTRANCES SHALL BE IN ACCORDANCE WITH ARTICLE 406.19 OF THE STANDARD SPECIFICATIONS.

TO BE USED:
 RT. STA. 80+06
 RT. STA. 81+02
 RT. STA. 81+43
 RT. STA. 82+48

DETAILS OF CONCRETE COLLAR

PIPE TO PIPE



TABULATION

DIAMETER OF PIPE	CL. SI CONC. CU. YDS. EST.
12"	0.24
15"	0.29
18"	0.32
24"	0.44
30"	0.56
36"	0.66
42"	0.80
48"	0.93
54"	1.07
60"	1.22
72"	1.55

THE CONCRETE COLLAR SHALL BE PAID FOR AT THE CONTRACT UNIT PRICE PER CUBIC YARD FOR CONCRETE COLLAR, AS SHOWN ON THE PLANS, WHICH PRICE SHALL INCLUDE THE REMOVAL OF SUCH PORTIONS THE EXISTING HEADWALLS AS MAY BE REQUIRED.

CLASS SI CONCRETE SHALL BE USED THROUGHOUT.

REVISIONS

DRAWN	7-13-90
REVISED	8-22-94

STD. 9-79

REVISIONS	
NAME	DATE

ILLINOIS DEPARTMENT OF TRANSPORTATION
DETAILS:
 THICKNESS TRANSITION AT DOUBLE BOX;
 CONCRETE COLLAR (PIPE TO PIPE);
 SEEDING AND MULCHING;
 HMA, PCC OR OIL AND CHIP PRIVATE
 OR COMMERCIAL ENTRANCE

SCALE: VERT. NO SCALE HORIZ. DATE
 DRAWN BY CNH
 CHECKED BY