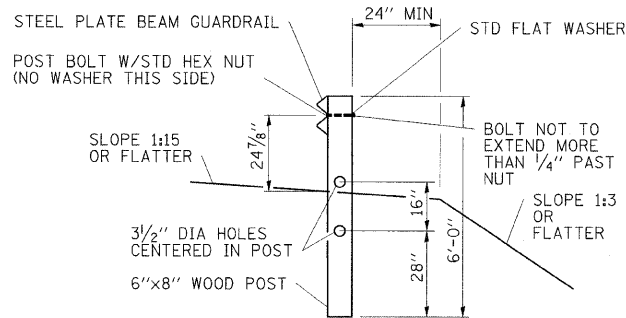
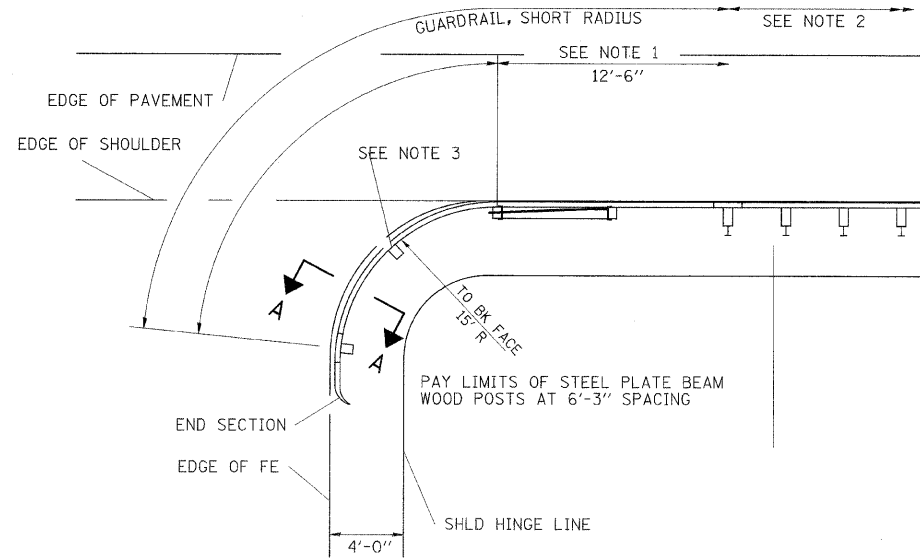


F.A. RTE.	SECTION	COUNTY	TOTAL SHEETS	SHEET NO.
*	**	***	304	174
STA.		TO STA.		
FED. ROAD DIST. NO.		ILLINOIS	FED. AID PROJECT	
* FAU 9481, FAS 2887 (IL 37)				
** (12,12X),RS-3;12B-1,12B1-1				
*** FRANKLIN AND WILLIAMSON				

SHORT RADIUS GUARDRAIL DETAILS

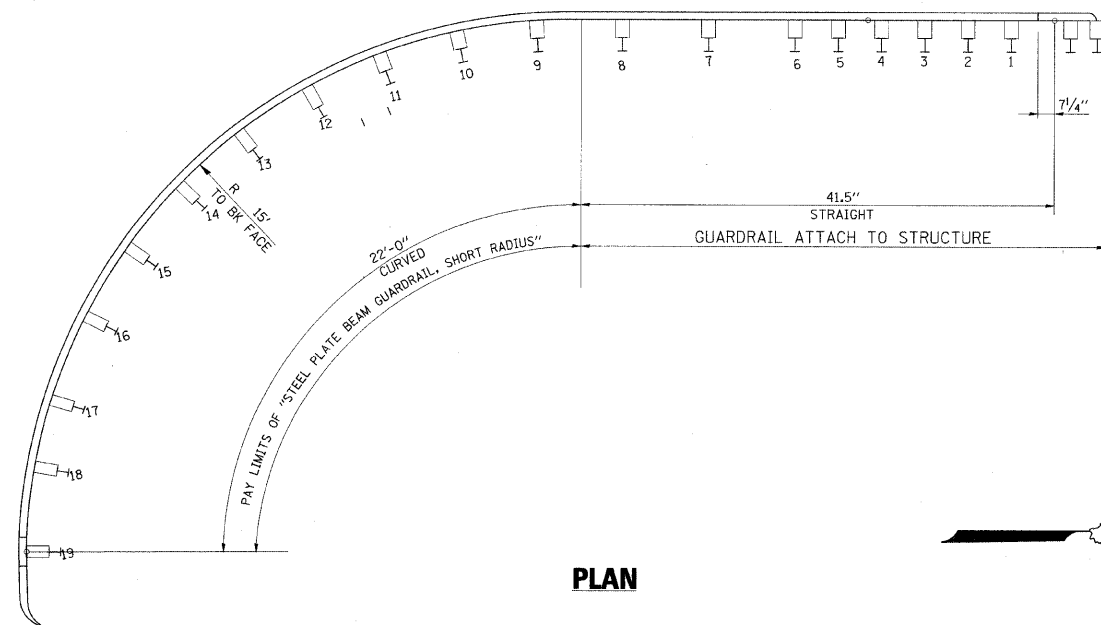
PLAN



SECTION A-A

NOTES

1. CONSTRUCT ACCORDING TO STANDARD 631011 FOR TRAFFIC BARRIER TERMINAL TYPE 6A, EXCEPT DELETE END SECTION AND SPLICE INTO RADIUS GUARDRAIL.
2. STEEL PLATE BEAM GUARDRAIL TYPE A, TYPE B, OR TRAFFIC BARRIER TERMINAL AS SPECIFIED.
3. THE RAIL IS NOT BOLTED TO THE POST LOCATED AT THE MIDPOINT OF THE CURVE.

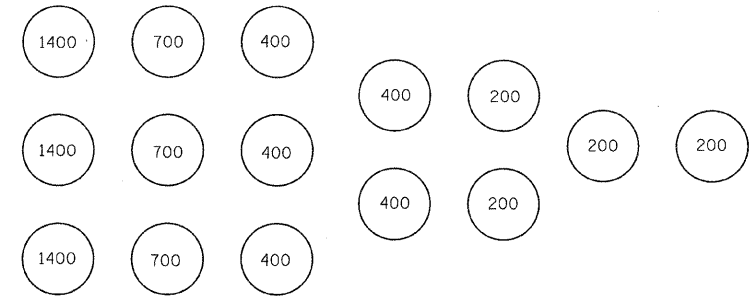


PLAN



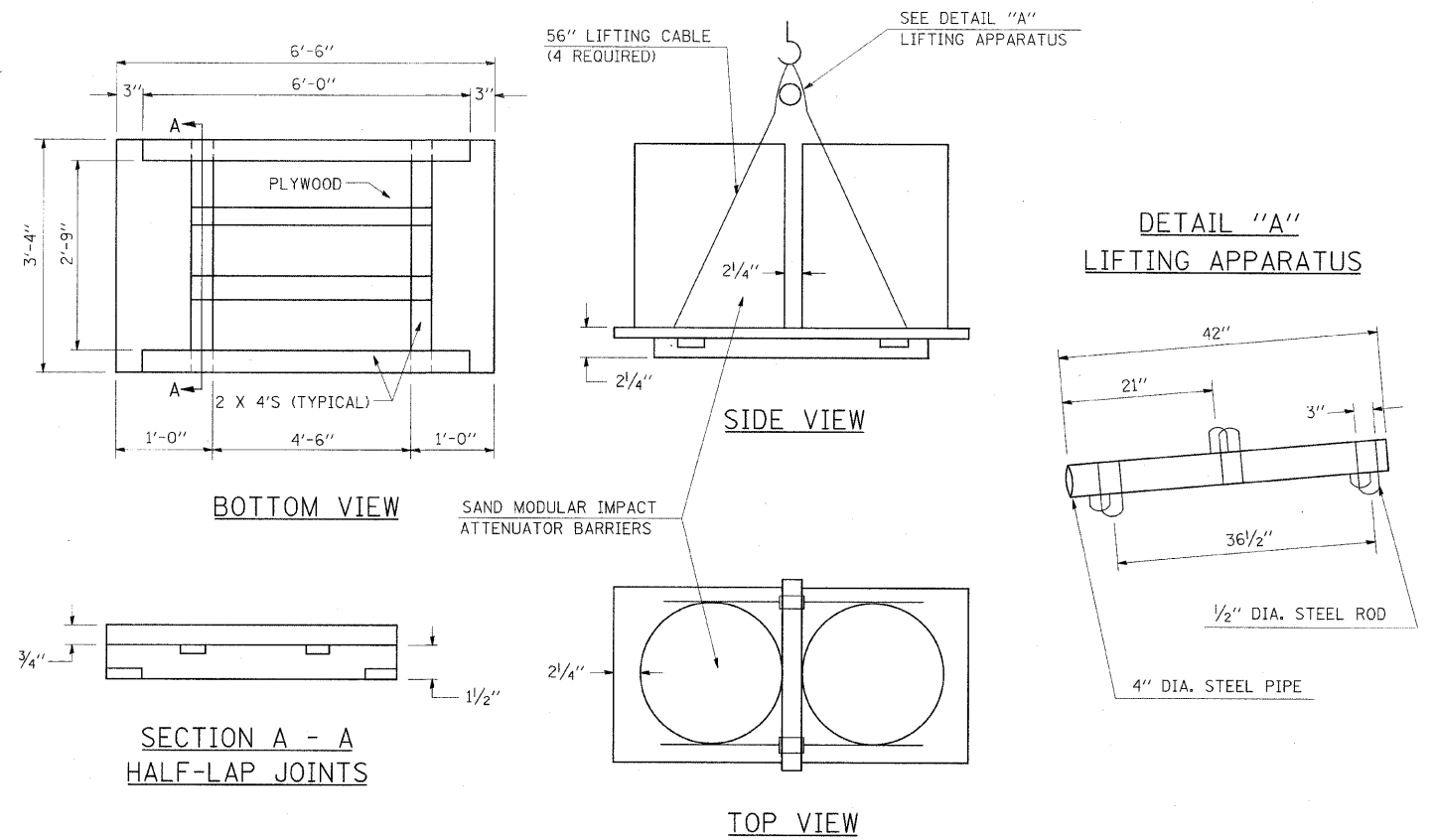
SAND MODULE IMPACT ATTENUATOR SYSTEM

(POUNDS)



NOTE:

THIS LAYOUT WAS DESIGNED TO STOP VEHICLES WEIGHING 4500 LBS. OR LESS. IT WILL NOT STOP TRUCKS.



BOTTOM VIEW

SIDE VIEW

DETAIL "A"
LIFTING APPARATUS

SECTION A - A
HALF-LAP JOINTS

TOP VIEW

SUGGESTED PALLET DESIGN FOR CONSTRUCTION SITES

THE DESIGN OF THE PALLET AND LIFTING APPARATUS IS SUGGESTED ONLY. THE CONTRACTOR SHALL ASSUME FULL RESPONSIBILITY FOR ASSURING THE DEVICE IS STRUCTURALLY ADEQUATE. OTHER DESIGNS MAY BE USED WITH THE APPROVAL OF THE ENGINEER. MAXIMUM PALLET HEIGHT 2/4 INCHES.

REVISIONS	
DRAWN	1-25-93
REVISED	
REVISED	
REVISED	

STD. 9-94

REVISIONS	
NAME	DATE

ILLINOIS DEPARTMENT OF TRANSPORTATION
DETAILS:
SHORT RADIUS GUARDRAIL;
SAND MODULE IMPACT ATTENUATOR SYSTEM

SCALE: VERT. NO SCALE
HORIZ. DATE
DRAWN BY
CHECKED BY