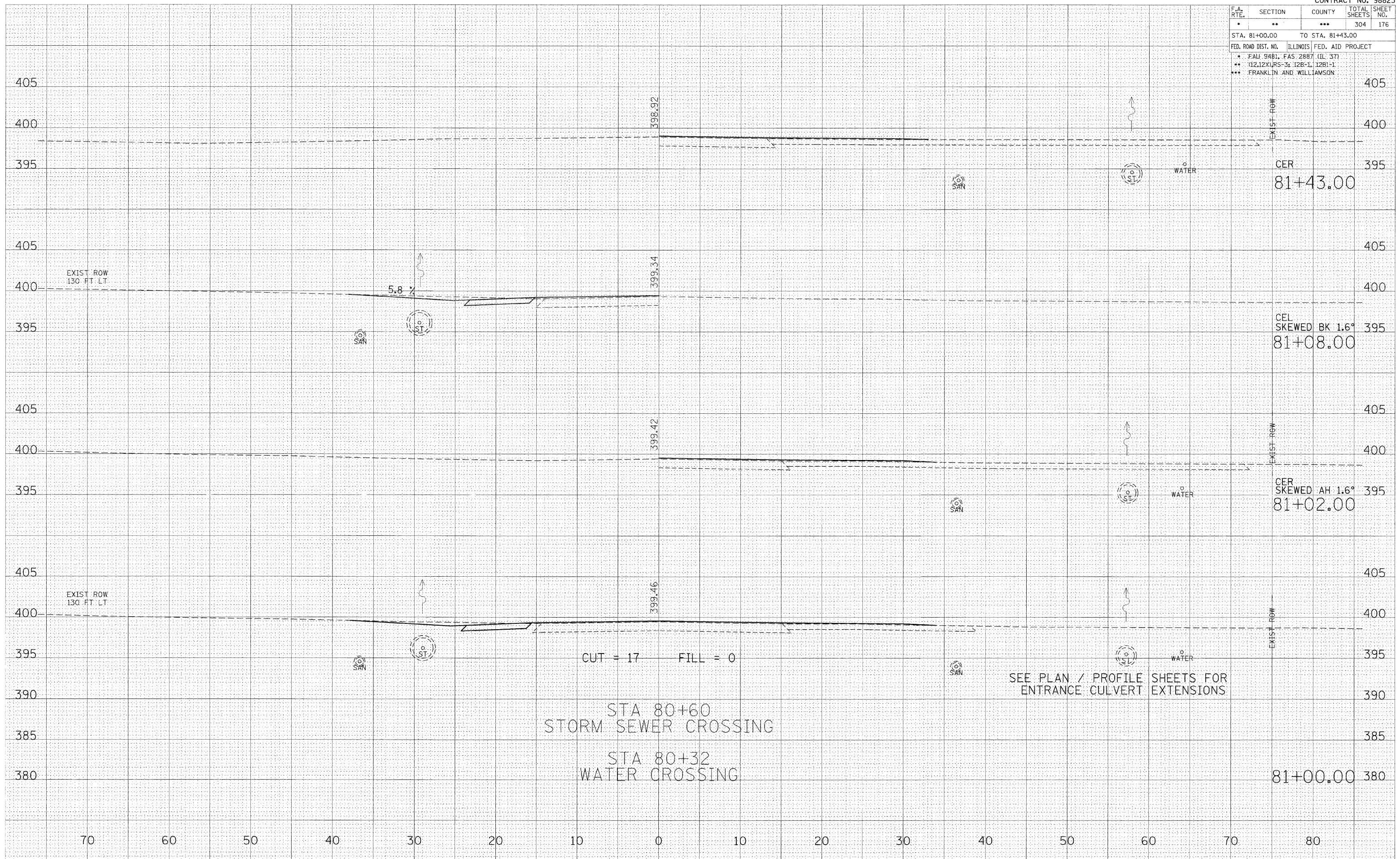


F.A. RTE.	SECTION	COUNTY	TOTAL SHEETS	SHEET NO.
*	**	***	304	176
STA. 81+00.00 TO STA. 81+43.00				
FED. ROAD DIST. NO. ILLINOIS FED. AID PROJECT				
* FAU 9481, FAS 2887 (IL 37)				
** (12)X1RS-3; 12B-1, 12B1-1				
*** FRANKLIN AND WILLIAMSON				

BY	DATE

BY	DATE

ORIGINAL SURVEYED PLOTTED
 FILE NAME = C:\WORK\11000\LEFT\MICHEL\11000\98823\98823.dwg
 PLOT SCALE = 5.0000 / IN.
 USER NAME = jpf@ch2d



SEE PLAN / PROFILE SHEETS FOR ENTRANCE CULVERT EXTENSIONS

STA 80+60
 STORM SEWER CROSSING
 STA 80+32
 WATER CROSSING

CUT = 17 FILL = 0