

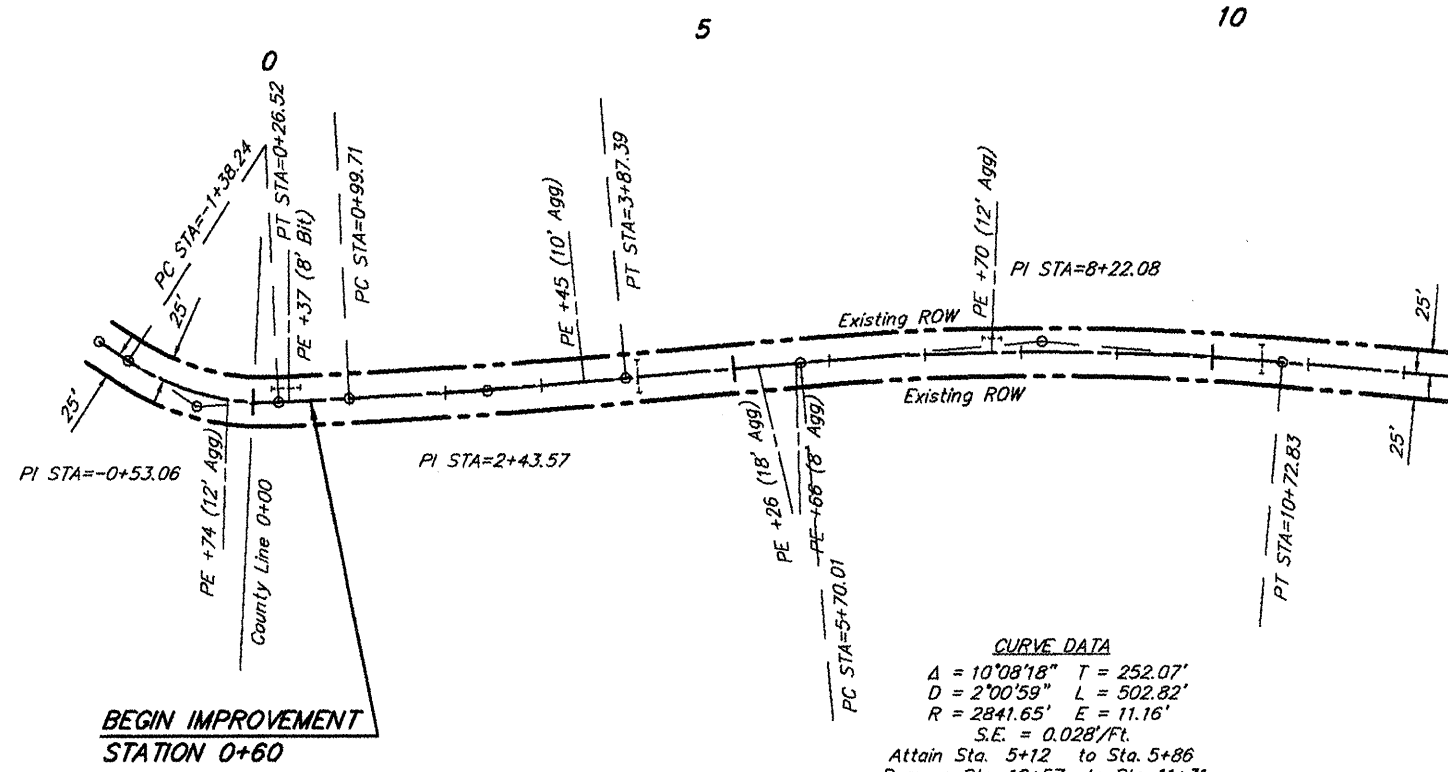


**CURVE DATA**  
 $\Delta = 35^{\circ}52'42''$   $T = 85.18'$   
 $D = 21^{\circ}46'35''$   $L = 164.76'$   
 $R = 263.11'$   $E = 13.44'$   
 $S.E. = 0.080'/ft.$   
 Attain Sta. -1+75 to Sta. -0+56  
 Remove Sta. -0+44 to Sta. 0+100

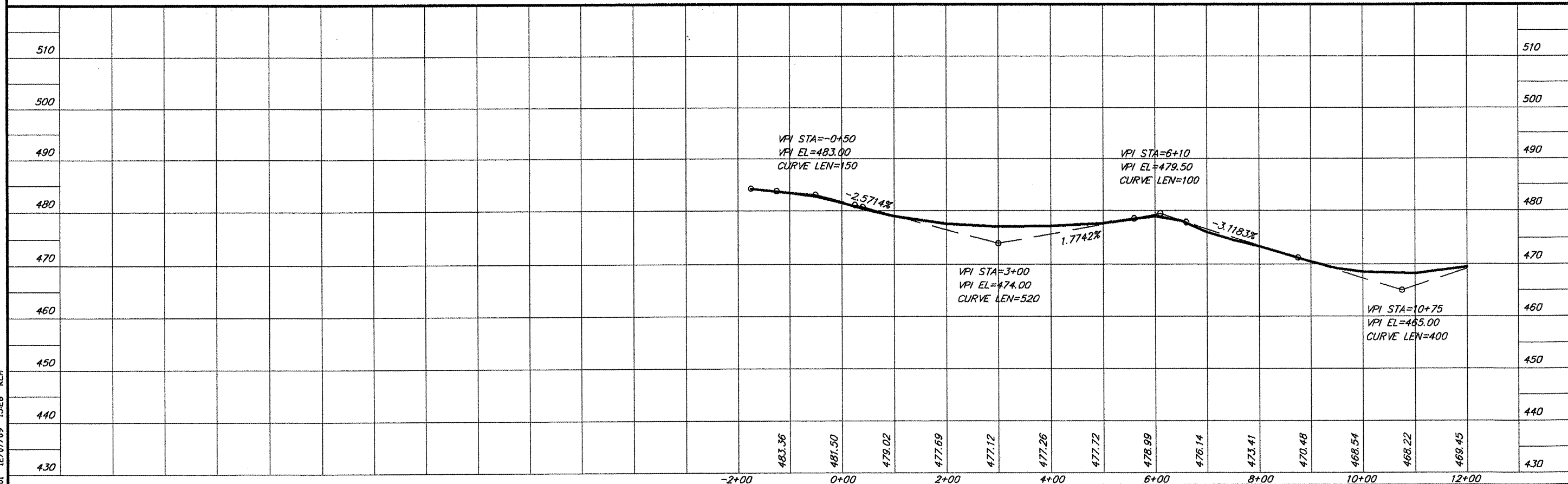
**CURVE DATA**  
 $\Delta = 2^{\circ}11'57''$   $T = 143.85'$   
 $D = 0^{\circ}45'52''$   $L = 287.67'$   
 $R = 7494.72'$   $E = 1.38'$   
 Normal Crown

ROUTE	SECTION	COUNTY	TOTAL SHEETS	SHEET NO.
FAS 924	09-00062-00-RS	JOHNSON	10	4
PROJECT NO. ARA-RS-924 (124)			CONTRACT NO. 99372	

NOTE: All existing pipe culverts are to remain.



SCALES:  
 1" = 200' HOR  
 1" = 20' VER



PLAN & PROFILE STA. -1+75 - STA. 12+00