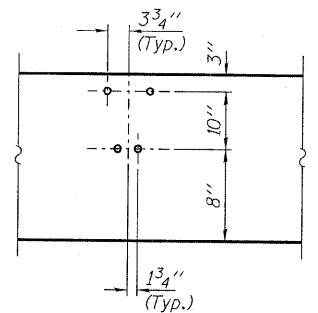
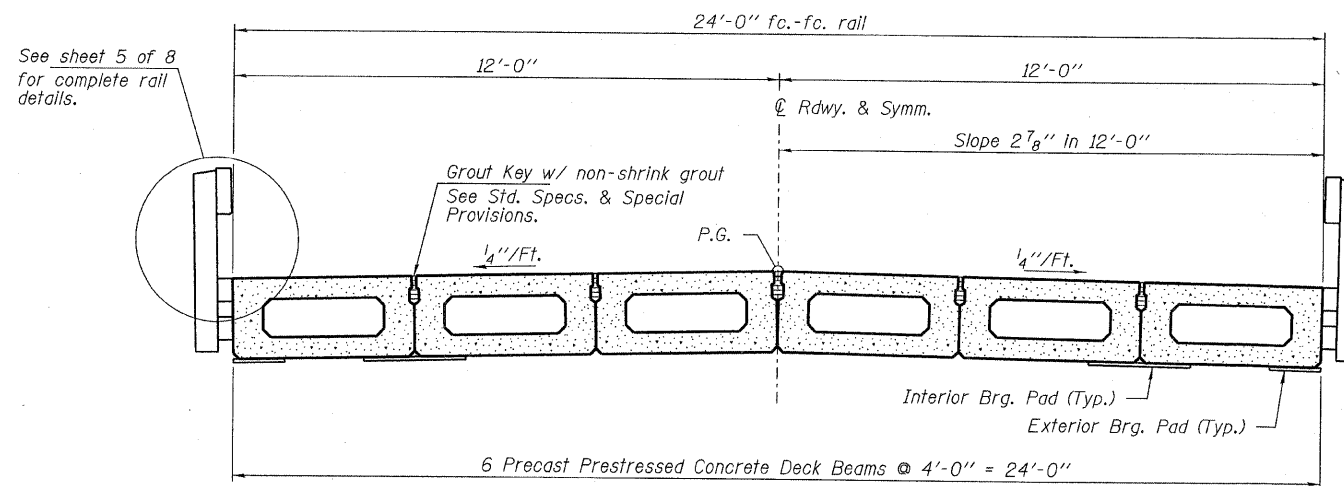


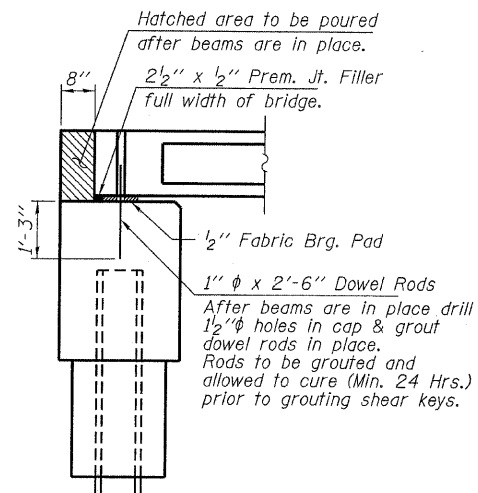
ELEVATION
Showing Rail Post Spaces
See sheet 5 of 8 for Railing Details.



DETAIL A



CROSS SECTION
See sheets 2 & 3 of 8 for Superstructure.



SECTION AT ABUTMENTS
© Rt. L's

DESIGNED -	V.J.H.
CHECKED -	S.W.M.
DRAWN -	D.T.M.
CHECKED -	D.A.B.

SUPERSTRUCTURE DETAILS
STRUCTURE NO. 033-3302

HAMPTON, LENZINI AND RENWICK, INC. CIVIL ENGINEERS - STRUCTURAL ENGINEERS - LAND SURVEYORS HLR 3085 STEVENSON DRIVE, SUITE 201 SPRINGFIELD, ILLINOIS 62703 217.546.3400 www.hlrengineering.com <small>184.000559 ILLINOIS PROFESSIONAL DESIGN FIRM LS / PE / SE CORPORATION</small>	SHEET NO. 4	T.R.	SECTION	COUNTY	TOTAL SHEETS	SHEET NO.
	8 SHEETS	52	06-04126-00-BR	HAMILTON	11	7
PROJECT NUMBER: 09.0070.130	DATE: 12/17/09	DAHLGREN ROAD DISTRICT		CONTRACT NO. 99416		
		FED. ROAD DIST. NO.	ILLINOIS	FED. AID PROJECT: BROS-065(048)		