

PROJECT ENGINEER: SCOTT KULLERSTRAND

SQUAD LEADER: LANCE NICKLAUS 815-284-5407

06-11-2021 LETTING ITEM 020

FOR INDEX OF SHEETS & STATE STANDARDS
SEE SHEET NO. 2

STATE OF ILLINOIS
 DEPARTMENT OF TRANSPORTATION
 DIVISION OF HIGHWAYS
**PROPOSED
 HIGHWAY PLANS**
 FAP 308 (IL 84)
 SECTION D2 PP 2021-6
 ROCK ISLAND/WHITESIDE COUNTIES
 C-92-070-21

FAP RTE.	SECTION	COUNTY	TOTAL SHEETS	SHEET NO.
308	D2 PP 2021-6	*	3	1

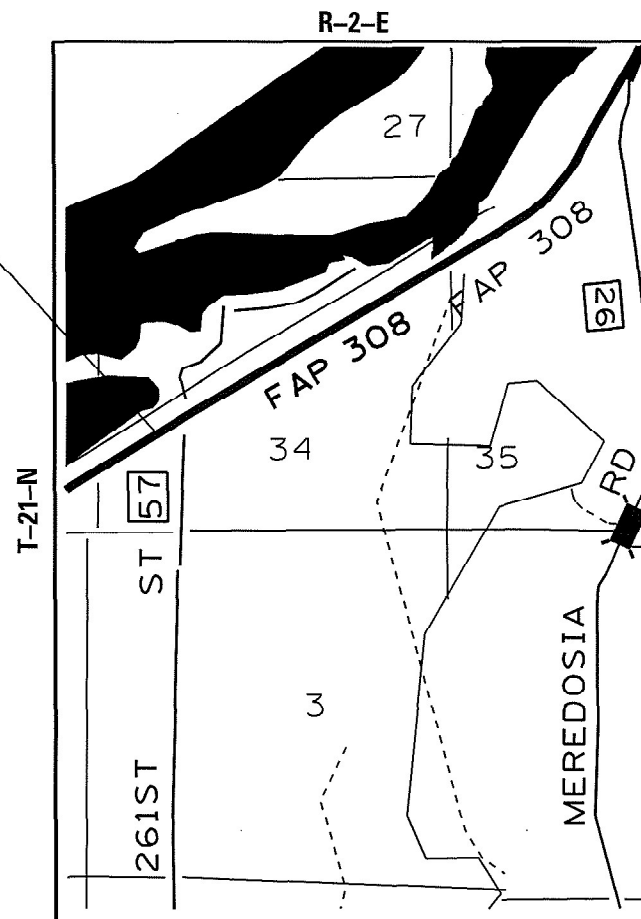
*ROCK ISLAND/WHITESIDE

CONTRACT NO. 64R04
D-92-046-21



PROJECT BEGINS
1.2 MILE SOUTH OF COUNTY LINE

PROJECT ENDS
0.7 MILE NORTH OF COUNTY LINE



TOWNSHIP (SECTION):
CORDOVA (34)
ALBANY (35)

J.U.L.I.E.
JOINT UTILITY LOCATION INFORMATION FOR EXCAVATION
1-800-892-0123

GROSS LENGTH OF PROJECT = 10,982 FT = 2.08 MILES
NET LENGTH OF PROJECT = 10,982 FT = 2.08 MILES

CONTRACT NO. 64R04

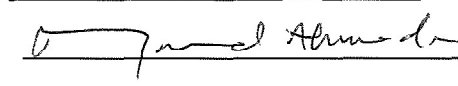
FAP 308 (IL 84)


SECTION D2 PP 2021-6

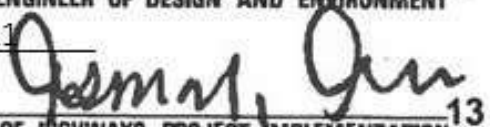
ROCK ISLAND/WHITESIDE COUNTIES

STATE OF ILLINOIS
 DEPARTMENT OF TRANSPORTATION
 DIVISION OF HIGHWAYS

SUBMITTED MARCH 5TH 20 21


 REGIONAL ENGINEER

May 7, 2021 
 ENGINEER OF DESIGN AND ENVIRONMENT

May 7, 2021 
 DIRECTOR OF HIGHWAYS PROJECT IMPLEMENTATION 13

PRINTED BY THE AUTHORITY
OF THE STATE OF ILLINOIS

INDEX

- 1 Cover Sheet
- 2 Index of Sheets / State Standards/District Standard/General notes
- 3 Summary of Quantities

STATE STANDARDS

420001-09	PAVEMENT JOINTS
420701-03	PAVEMENT WELDED WIRE REINFORCEMENT
442101-09	CLASS B PATCHES
701001-02	OFF-ROAD OPERATIONS, 2L,2W, MORE THAN 15' (4.5m) AWAY
701006-05	OFF-ROAD OPERATIONS, 2L,2W, 15' (4.5m) TO 24" (600mm) FROM PAVEMENT EDGE
701201-05	LANE CLOSURE, 2L,2W, DAY ONLY, FOR SPEEDS \geq 45 MPH
701301-04	LANE CLOSURE, 2L,2W, SHORT TIME OPERATIONS
701901-08	TRAFFIC CONTROL DEVICES
720011-01	METAL POST FOR SIGNS, MARKERS AND DELINEATORS
728001-01	TELESCOPING STEEL SIGN SUPPORT
729001-01	APPLICATIONS OF TYPES A AND B METAL POST (FOR SIGNS & MARKERS)

DISTRICT STANDARDS

- 34.1 Work Zone Sign Details

GENERAL NOTES

Closed expansion joints on jointed pavements shall be re-established during the patching operations. Class B Patches - when the pavement requires patching at the location of the expansion joint, a new joint should be established using a dowelled expansion patch as shown on Highway Standard 442101. When the joint is closed, but does not require patching, an expansion joint may be formed by sawing the pavement and filling the saw cut with a preformed expansion joint filler meeting the requirements of Section 1051 of the Standard Specifications as shown on Standard 420001.

When laying out for patching, the minimum distance between new patches (saw cut to saw cut) shall be 15 feet. When patch spacing is less than 15 feet, the pavement between patches shall also be removed and replaced.

SUMMARY OF QUANTITIES

FAP 308 (IL 84)
SECTION D2 PP 2021-6
ROCK ISLAND/WHITESIDE COUNTIES
CONTRACT # 64R04
SHEET 3 OF 3
URBAN
100% State
0006

CODE NO.	ITEM	UNIT	ROCK ISLAND	WHITE SIDE	TOTAL QUANTITY
44200050	WELDED WIRE REINFORCEMENT	SQ YD	733	367	1,100
44200934	CLASS B PATCHES, TYPE II 8"	SQ YD	1140	570	1,710
44200942	CLASS B PATCHES, TYPE III 8"	SQ YD	513	257	770
44200944	CLASS B PATCHES, TYPE IV 8"	SQ YD	220	110	330
44201299	DOWEL BARS 1 1/2"	EACH	3447	1723	5,170
44213200	SAW CUT	FOOT	7373	3687	11,060
44213204	TIE BARS 3/4"	EACH	283	142	425
67100100	MOBILIZATION	L SUM	0.75	0.25	1
70100450	TRAFFIC CONTROL AND PROTECTION, STANDARD 701201	L SUM	0.75	0.25	1

* Specialty Items