

STATE OF ILLINOIS
DEPARTMENT OF TRANSPORTATION

F.A.P. RTE.	SECTION	COUNTY	TOTAL SHEETS	SHEET NO.
587	(17, 18) SFY, Y	LASALLE	9	1
		ILLINOIS	CONTRACT NO. 66K19	

INDEX OF SHEETS

- 1 COVER SHEET
- 2 GENERAL NOTES
- 3-4 SUMMARY OF QUANTITIES
- 5 TYPICAL SECTIONS
- 6-7 SCHEDULES
- 8-9 DETAILS

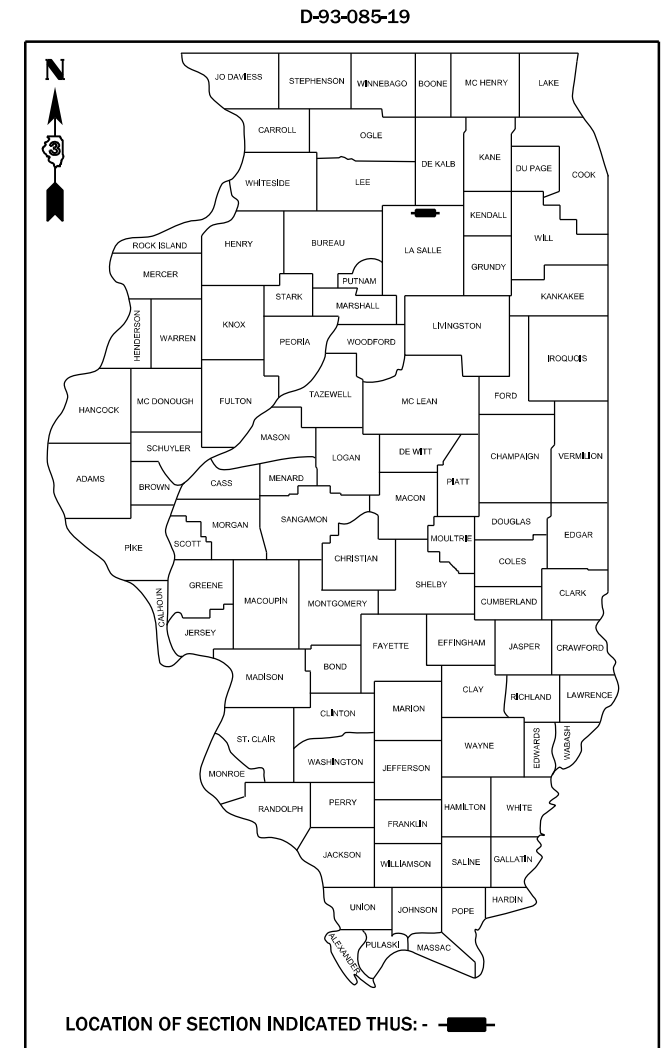
HIGHWAY STANDARDS

- 000001-08 STANDARD SYMBOLS, ABBREVIATIONS AND PATTERNS
- 001006 DECIMAL OF AN INCH AND OF A FOOT
- 406201-01 MAILBOX TURNOUT
- 482001-02 HMA SHOULDER ADJACENT TO FLEXIBLE PAVEMENT
- 482006-03 HMA SHOULDER ADJACENT TO RIGID PAVEMENT
- 642006-01 SHOULDER RUMBLE STRIPS, 8 INCH
- 701006-05 OFF-ROAD OPERATIONS 2L, 2W, 15' (4.5 m) TO 24" (600 mm) FROM PAVEMENT EDGE
- 701311-03 LANE CLOSURE, 2L, 2W, MOVING OPERATIONS - DAY ONLY
- 701326-04 LANE CLOSURE, 2L, 2W, PAVEMENT WIDENING, FOR SPEEDS ≥ 45 MPH
- 701901-08 TRAFFIC CONTROL DEVICES

**PROPOSED
HIGHWAY PLANS**

**FAP ROUTE 587 (US 34)
SECTION (17, 18) SFY, Y
PROJECT: HSIP - UJPT (527)
SHOULDER WIDENING AND RUMBLE STRIPS
LASALLE COUNTY**

C-93-105-19



**US 34 - OTHER ARTERIAL
2017 ADT = 2900
P.V. = 93.5% S.U. = 3.4% M.U. = 3.1%**

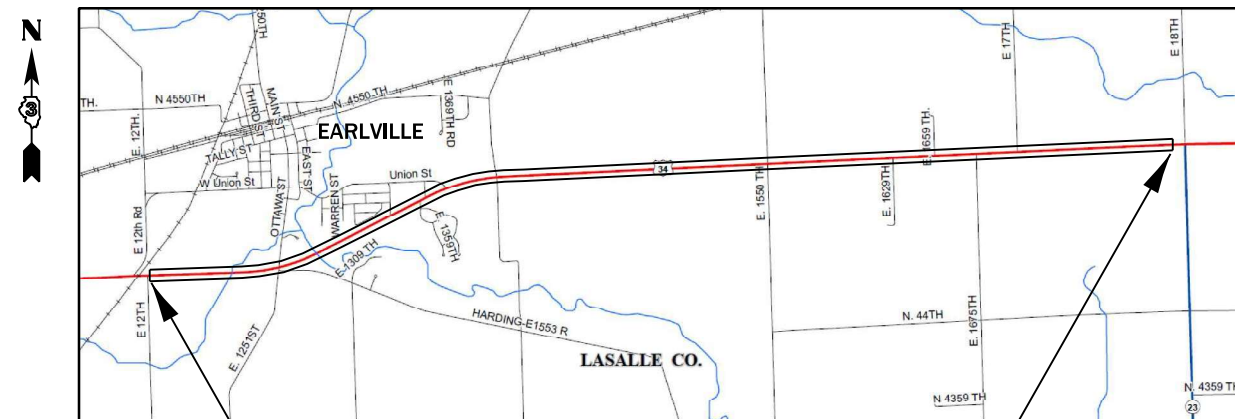
STATE OF ILLINOIS
DEPARTMENT OF TRANSPORTATION

SUBMITTED March 18, 20 21
[Signature]
REGIONAL ENGINEER

May 7, 2021 *[Signature]*
ENGINEER OF DESIGN AND ENVIRONMENT

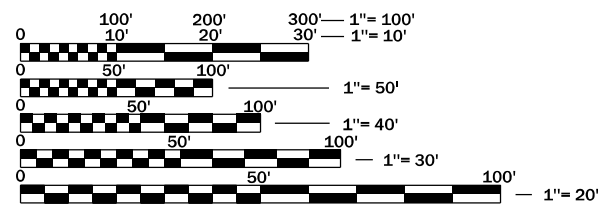
May 7, 2021 *[Signature]*
DIRECTOR OF HIGHWAYS PROJECT IMPLEMENTATION

**PRINTED BY THE AUTHORITY
OF THE STATE OF ILLINOIS**



**PROJECT BEGINS
JUST EAST OF E 12TH RD
STA 582+83**

**PROJECT ENDS
0.18 MI WEST OF IL 23
STA 907+80**



FULL SIZE PLANS HAVE BEEN PREPARED USING STANDARD ENGINEERING SCALES. REDUCED SIZED PLANS WILL NOT CONFORM TO STANDARD SCALES. IN MAKING MEASUREMENTS ON REDUCED PLANS, THE ABOVE SCALES MAY BE USED.

J.U.L.I.E.
JOINT UTILITY LOCATION INFORMATION FOR EXCAVATION
1-800-892-0123
OR 811

**PROJECT ENGINEER: JOE KANNEL, P.E.
UNIT CHIEF: MARC BUDZYNSKI, P.E.
DISTRICT 3 NO. (815) 434-6131
CONTRACT NO. 66K19**

GROSS LENGTH = 32,497 FT. = 6.15 MILES
NET LENGTH = 30,953 FT. = 5.86 MILES

MODEL: \\MODELM\JM\FILES
 FILE: \\MODELM\JM\WORKSPACE\66K19-911C-COVER.dgn

USER NAME = budzynskim	DESIGNED -	REVISED -
	DRAWN -	REVISED -
PLOT SCALE = 100.0000 ' / in.	CHECKED -	REVISED -
PLOT DATE = 3/18/2021	DATE -	REVISED -

**STATE OF ILLINOIS
DEPARTMENT OF TRANSPORTATION**

SUMMARY OF QUANTITIES

SCALE: SHEET OF SHEETS STA. TO STA.

F.A.P. RTE.	SECTION	COUNTY	TOTAL SHEETS	SHEET NO.
587	(17, 18) SFY, Y	LASALLE	9	3
ILLINOIS FED. AID PROJECT			CONTRACT NO. 66K19	

REV. 5/4/21 REV. 3/26/21

CODE NO.	ITEM	UNIT	TOTAL QUANTITY	CONSTR. CODE	
				90% FED	10% STATE
				SAFETY	RURAL
40600290	BITUMINOUS MATERIALS (TACK COAT)	POUND	9140	9140	
40800050	INCIDENTAL HOT-MIX ASPHALT SURFACING	TON	42.5	42.5	
44000157	HOT-MIX ASPHALT SURFACE REMOVAL, 2"	SQ YD	313.1	313.1	
48102100	AGGREGATE WEDGE SHOULDER, TYPE B	TON	782	782	
48203029	HOT-MIX ASPHALT SHOULDERS, 8"	SQ YD	20149	20149	
64200108	SHOULDER RUMBLE STRIPS, 8 INCH	FOOT	53284	53284	
* 66900200	NON-SPECIAL WASTE DISPOSAL	CU YD	220	220	
* 66900530	SOIL DISPOSAL ANALYSIS	EACH	7	7	
* 66901001	REGULATED SUBSTANCES PRE-CONSTRUCTION PLAN	L SUM	1.0	1.0	
* 66901003	REGULATED SUBSTANCES FINAL CONSTRUCTION REPORT	L SUM	1.0	1.0	
* 66901006	REGULATED SUBSTANCES MONITORING	CAL DA	12	12	
67100100	MOBILIZATION	L SUM	1.0	1.0	
70100500	TRAFFIC CONTROL AND PROTECTION, STANDARD 701326	L SUM	1.0	1.0	
70103815	TRAFFIC CONTROL SURVEILLANCE	CAL DA	10	10	

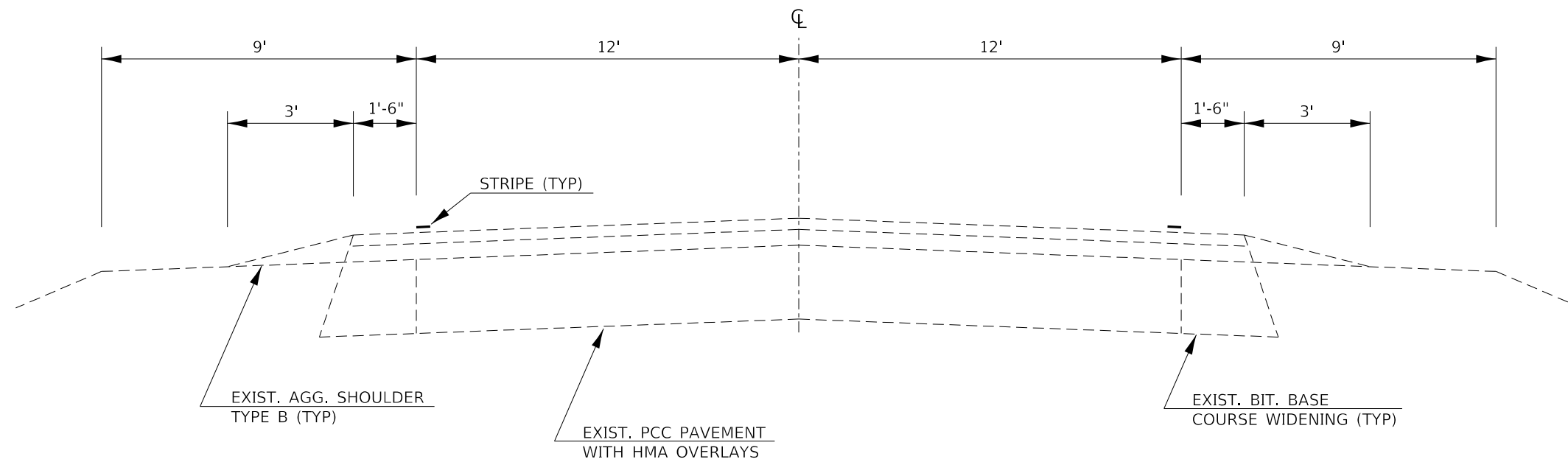
*= SPECIALTY ITEM

CODE NO.	ITEM	UNIT	TOTAL QUANTITY	CONSTR. CODE	
				90% FED 10% STATE	
				SAFETY	
				0021	
				RURAL	
* 78001110	PAINT PAVEMENT MARKING - LINE 4"	FOOT	128892		128892
X0800001	SHOULDER REMOVAL (SPECIAL)	SQ YD	20149		20149
Z0030850	TEMPORARY INFORMATION SIGNING	SQ FT	42		42

*= SPECIALTY ITEM

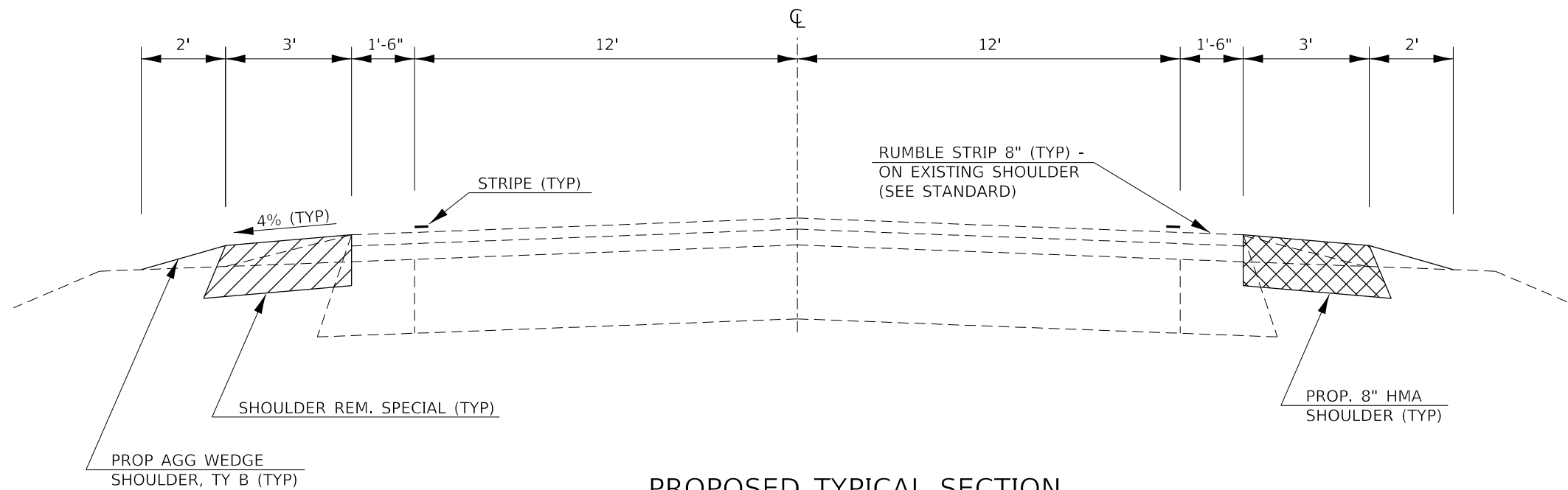
MODEL: \\MODELM\A\MTS
 FILE: \\MODELM\A\MTS\work\66k19\66k19-plot-cover.dgn

USER NAME = budzynskim	DESIGNED -	REVISED -	STATE OF ILLINOIS DEPARTMENT OF TRANSPORTATION	SUMMARY OF QUANTITIES				F.A.P. RTE.	SECTION	COUNTY	TOTAL SHEETS	SHEET NO.
DRAWN -	REVISIED -	587						(17, 18) SFY, Y	LASALLE	9	4	
PLOT SCALE = 100.0000' / in.	CHECKED -	REVISED -		CONTRACT NO. 66K19				ILLINOIS FED. AID PROJECT				
PLOT DATE = 3/18/2021	DATE -	REVISED -		SCALE:	SHEET	OF	SHEETS	STA.	TO	STA.		



EXISTING TYPICAL SECTION

STA 582+83 TO STA 907+80 (SEE SCHEDULE FOR OMISSIONS)



PROPOSED TYPICAL SECTION

STA 582+83 TO STA 907+80 (SEE SCHEDULE FOR OMISSIONS)

MODEL: \\MODELS\MJMS\FILE: \\models\cadd\work\widest\budzynskim\061316\0366k19-plr-cover.dgn

USER NAME = budzynskim	DESIGNED -	REVISED -
	DRAWN -	REVISED -
PLOT SCALE = 100,0000' / in.	CHECKED -	REVISED -
PLOT DATE = 3/18/2021	DATE -	REVISED -

**STATE OF ILLINOIS
DEPARTMENT OF TRANSPORTATION**

TYPICAL SECTIONS				
SCALE:	SHEET	OF	SHEETS	STA. TO STA.

F.A.P. RTE.	SECTION	COUNTY	TOTAL SHEETS	SHEET NO.
587	(17, 18) SFY, Y	LASALLE	9	5
CONTRACT NO. 66K19				
ILLINOIS FED. AID PROJECT				

SHOULDER REMOVAL & REPLACEMENT SCHEDULE (CONTINUED)										
LOCATION			SIDE	LENGTH	SHOULDER REMOVAL (SPECIAL)	HMA SHOULDERS 8"	AGG WEDGE SHOULDER, TYPE B, 2'	BIT MTL S TACK COAT	SHOULDER RUMBLE STRIPS, 8"	*PAINT PVMT MARKING WHITE 4"
STA	TO	STA	LT / RT	FOOT	SQ YD	SQ YD	TON	POUND	FOOT	FOOT
E 1550TH RD = STA 784+91										
784+08	TO	784+65	LT	57	19	19	1	4	57	228
785+25	TO	824+31	LT & RT	3906	2604	2604	100	1172	7812	15624
E 1629TH RD = STA 824+60										
824+31	TO	824+89	LT	58	19	19	1	4	58	232
824+89	TO	837+51	LT & RT	1262	841	841	33	378	2524	5048
E 1659TH RD = STA 837+77										
837+51	TO	838+03	RT	52	17	17	1	4	52	208
838+03	TO	850+55	LT & RT	1252	835	835	32	376	2504	5008
E 1675TH RD = STA 850+93										
850+55	TO	851+31	LT	76	25	25	1	6	76	304
851+31	TO	863+64	LT & RT	1233	822	822	32	370	2466	4932
E 17TH RD = STA 863+99										
863+64	TO	864+34	RT	70	23	23	1	5	70	280
864+34	TO	907+80	LT & RT	4346	2897	2897	111	1304	8692	17384
PAGE TWO SUBTOTALS				12312	8102	8102	313	3623	24311	49248
TOTALS				30953	20149	20149	782	8959	53284	128892

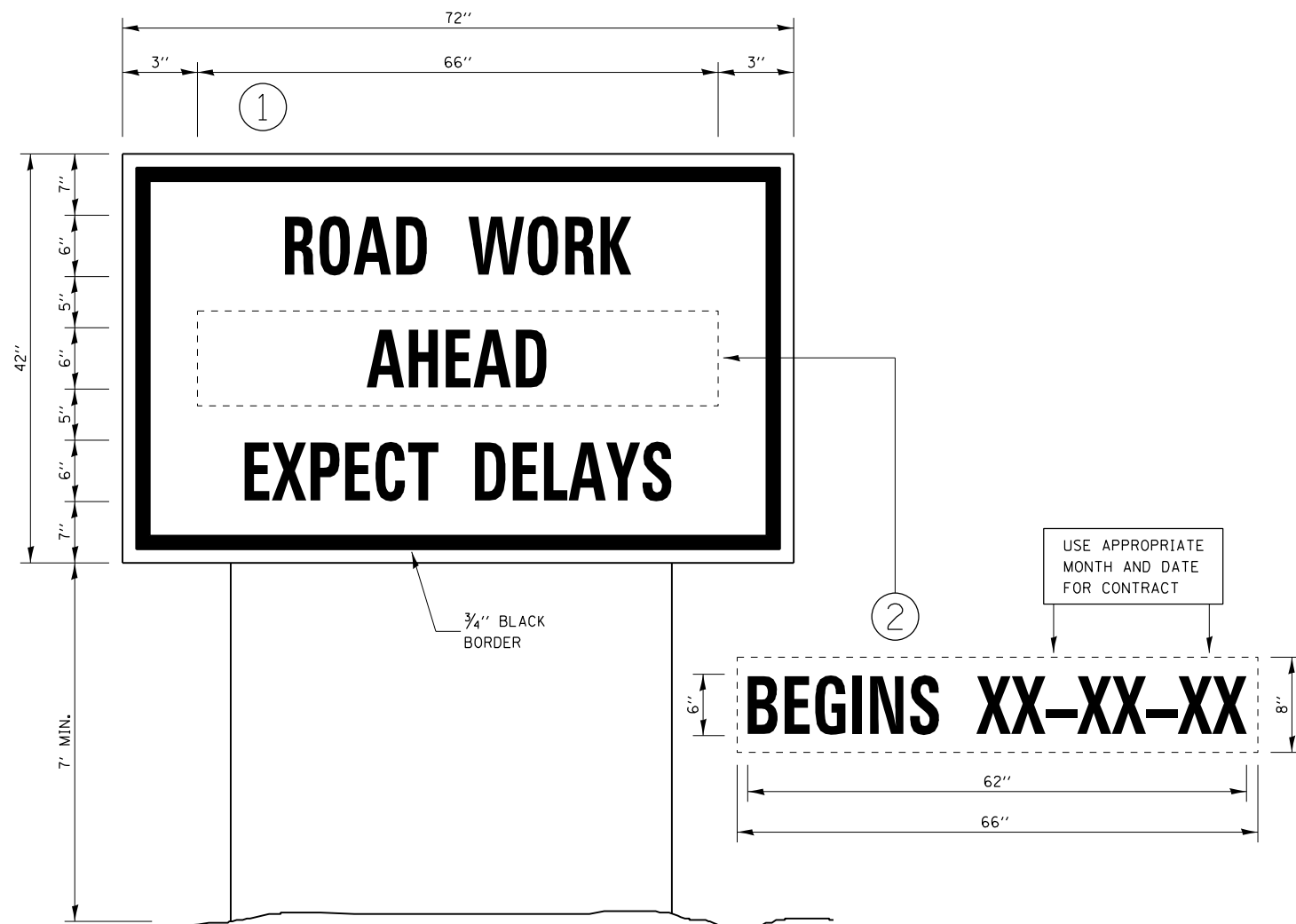
*QUANTITY REPRESENTS TWO SEPARATE APPLICATIONS

SURVEY MONUMENT TABLE						
MONUMENT NUMBER	DESCRIPTION	APPROXIMATE LOCATION	EXISTING MONUMENT TYPE	PROPOSED MONUMENT TYPE	MONUMENT RECORD TO BE RECORDED	RESPONSIBILITY
034804	SE CORNER SECTION 15, T36N, R3E, 3RD PM	1/2 MI E OF 1550TH RD	PIPE	30" #6 REBAR	YES	2

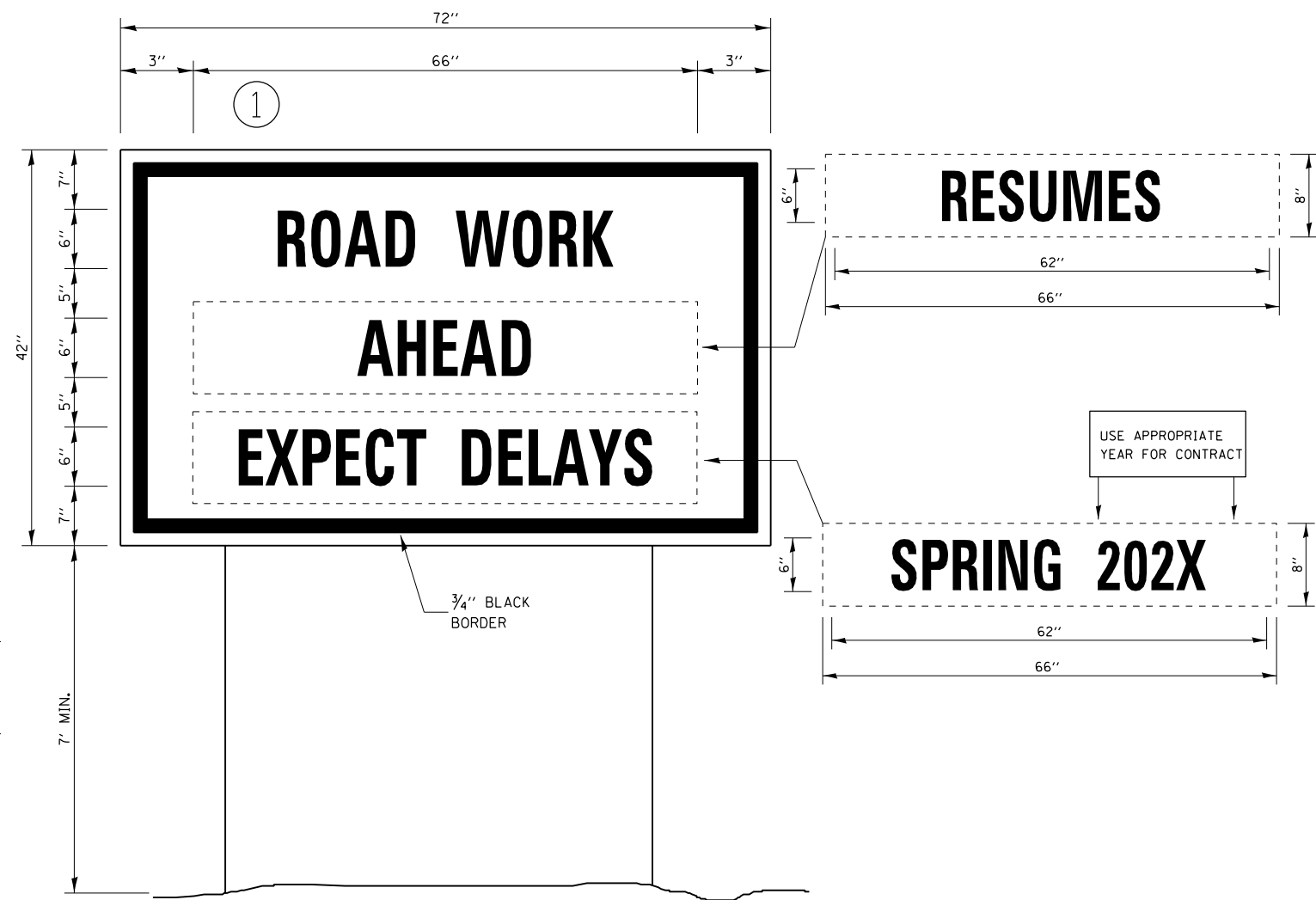
UNKNOWN MONUMENTS SET BY OTHERS MAY EXIST. IF FOUND, R.E. WILL DIRECT PLATS AND PLANS TO TO GPS ANY MONUMENT SUBJECT TO DESTRUCTION FROM THE SHOULDER WIDENING FOR THE PURPOSE OF RESETTING IT AFTER JOB COMPLETION.
R.E. WILL DIRECT PLATS AND PLANS TO SEARCH FOR ADDITIONAL MONUMENTS IF THE CONSTRUCTION LIMITS ARE REVISED DURING CONSTRUCTION.
WHEN WORK IS COMPLETED AT THE NOTED LOCATION, R.E. WILL DIRECT PLATS AND PLANS PERSONNEL TO RESET THE DESTROYED MONUMENT.
PLATS AND PLANS WILL PREPARE AND RECORD THE REQUIRED MONUMENT RECORD.
NOTE: FOR BIDDING PURPOSES, NO CONTRACTED LAND SURVEYING SERVICES WILL BE REQUIRED FOR RESETTING THE LISTED MONUMENT.

RESPONSIBILITY:
1) RESIDENT TO RE-ESTABLISH MONUMENT (PAY ITEM REQUIRED, PERMANENT SURVEY MARKER, TYPE 1)
2) PLATS AND PLANS TO RE-ESTABLISH MONUMENT

MODEL: \\MODELM\A\FILES
FILE: \\MODELM\A\WORK\SHOULDER\budzynskim\0613160\0366K19-shr-cover.dgn



TEMPORARY INFORMATION SIGNING



WINTER SHUT DOWN SIGNING

NOTES:

1. USE 6" D BLACK LETTERING ON FLOURESENT ORANGE BACKGROUND.
2. ERECT SIGNS AT LOCATIONS IN ADVANCE OF THE "ROAD CONSTRUCTION AHEAD" SIGNS AS DIRECTED BY THE ENGINEER.
3. ERECT SIGN ① WITH INSTALLED PANEL ② A MINIMUM OF ONE WEEK PRIOR TO THE START OF THE LANE CLOSURE.
4. REMOVE PANEL ② ON THAT DATE.
5. SEE SPECIAL PROVISION "TEMPORARY INFORMATION SIGNING" FOR ADDITIONAL INFORMATION.
6. WILL BE PAID FOR PER SQ FT AS "TEMPORARY INFORMATION SIGNING". EACH SIGN = 21 SQ FT AND THE DATE PANEL ② WILL NOT BE MEASURED SEPARATELY FOR PAYMENT.

MODEL: \\MODELS\MJMTS
 FILE: \\models\csp\work\shutdow\budzynskim\0613160\0366k19-plc-cover.dwg

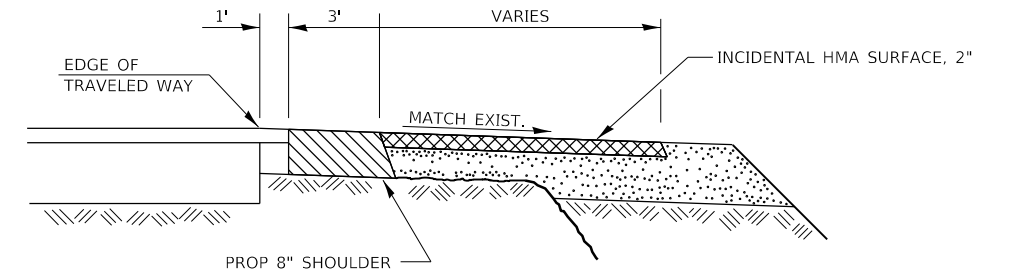
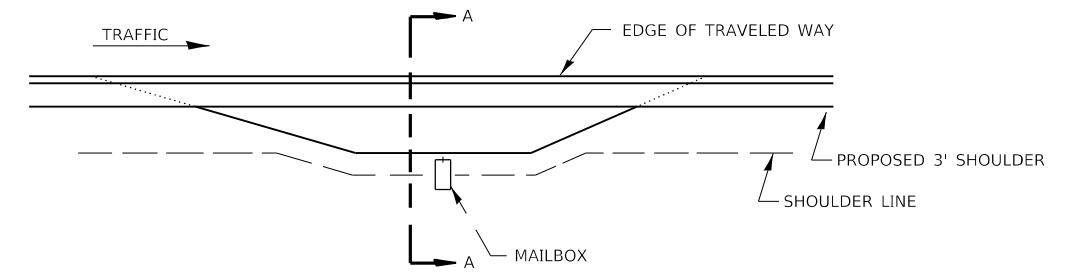
USER NAME = budzynskim	DESIGNED -	REVISED -
	DRAWN -	REVISED -
PLOT SCALE = 100.0000' / in.	CHECKED -	REVISED -
PLOT DATE = 3/18/2021	DATE -	REVISED -

**STATE OF ILLINOIS
DEPARTMENT OF TRANSPORTATION**

DETAILS

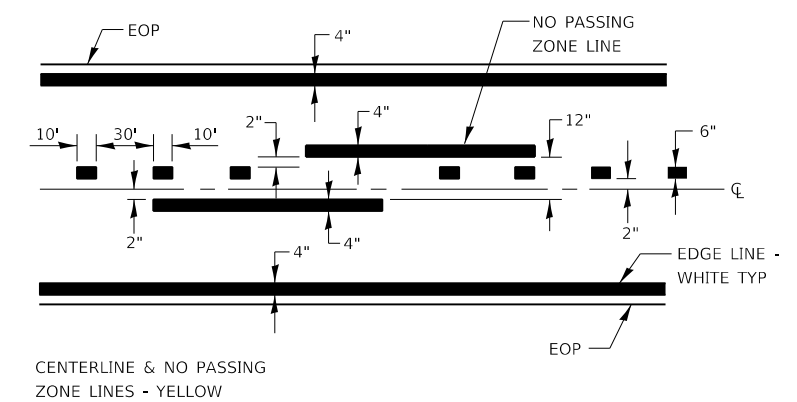
SCALE: SHEET OF SHEETS STA. TO STA.

F.A.P. RTE.	SECTION	COUNTY	TOTAL SHEETS	SHEET NO.
587	(17, 18) SFY, Y	LASALLE	9	8
CONTRACT NO. 66K19			ILLINOIS FED. AID PROJECT	



SECTION A-A

RURAL MAILBOX TURNOUT DETAILS



CENTERLINE & NO PASSING ZONE LINES - YELLOW

PAVEMENT MARKING

MODEL: 4MODEL.MAR15
FILE: Mar15.ctb, workspacedat\budzynskim\061316\0366K19-plt-cover.dwg

USER NAME = budzynskim	DESIGNED -	REVISED -
	DRAWN -	REVISED -
PLOT SCALE = 100.0000' / in.	CHECKED -	REVISED -
PLOT DATE = 3/18/2021	DATE -	REVISED -

**STATE OF ILLINOIS
DEPARTMENT OF TRANSPORTATION**

DETAILS		F.A.P. RTE.	SECTION	COUNTY	TOTAL SHEETS	SHEET NO.
		587	(17, 18) SFY, Y	LASALLE	9	9
SCALE:	SHEET OF SHEETS	STA.	TO STA.	ILLINOIS FED. AID PROJECT		

F.A.P. RTE.	SECTION	COUNTY	TOTAL SHEETS	SHEET NO.
587	(17, 18) SFY, Y	LASALLE	9	9
CONTRACT NO. 66K19				