

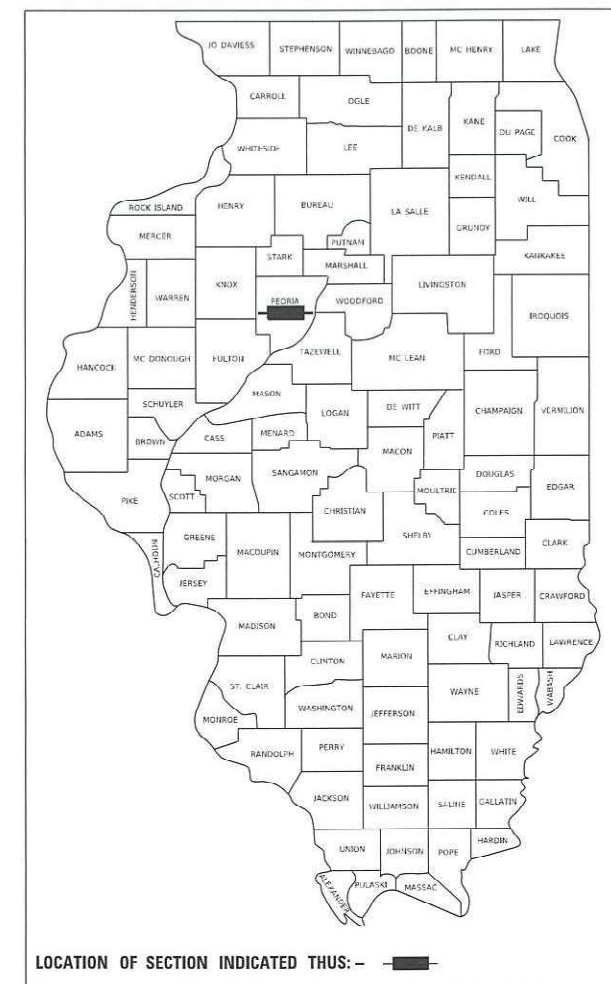
STATE OF ILLINOIS
DEPARTMENT OF TRANSPORTATION

F.A. RTE.	SECTION	COUNTY	TOTAL SHEETS	SHEET NO.
646	(126)SLP-1,DR	PEORIA	29	1
		ILLINOIS	CONTRACT NO. 68G13	

INDEX OF SHEETS

1. COVER SHEET
2. GENERAL NOTES /JOB SPECIFIC NOTES / STATUS OF UTILITIES
- 3.-5. SUMMARY OF QUANTITIES
6. SCHEDULE OF QUANTITIES
7. LINE DIAGRAM
8. TYPICAL SECTIONS
- 9.-10. CONTROL POINTS AND BENCHMARKS
11. DETOUR DETAIL
12. TRAFFIC CONTROL PLAN
13. REMOVAL PLAN
14. PROPOSED PLAN
- 15.-16. DRAINAGE DETAILS
17. BORING LOG
- 18.-29. CROSS SECTIONS

D-94-015-21



PROPOSED HIGHWAY PLANS

FAP ROUTE 646 (IL 40)
SECTION (126)SLP-1, DR
PROJECT N/A
CONTRACT MAINTENANCE
PEORIA COUNTY

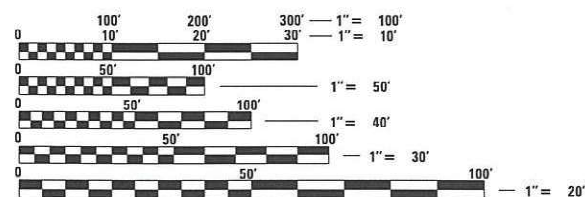
C-94-020-21

HIGHWAY STANDARDS

280001-07	701701-10
542401-04	701801-06
602701-02	701901-08
664001-02	704001-08
701106-02	782006-01
701423-10	BLR 21-9
701426-09	
701428-01	

DESIGN DESIGNATION

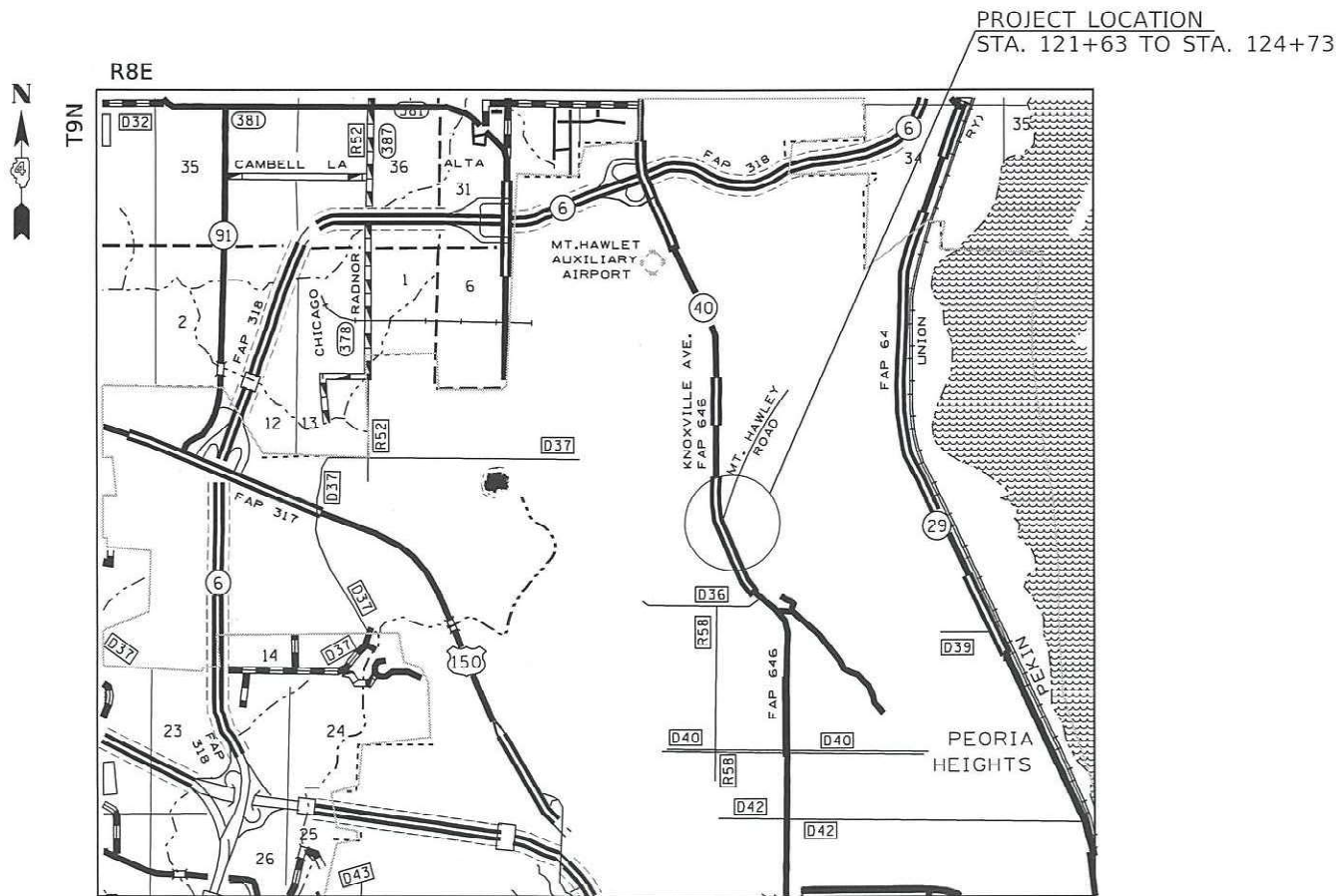
OTHER PRINCIPAL ARTERIAL (2019)
ADT = 20,400
MU = 1.72%
SU = 4.17%



FULL SIZE PLANS HAVE BEEN PREPARED USING STANDARD ENGINEERING SCALES. REDUCED SIZED PLANS WILL NOT CONFORM TO STANDARD SCALES. IN MAKING MEASUREMENTS ON REDUCED PLANS, THE ABOVE SCALES MAY BE USED.

J.U.L.I.E.
JOINT UTILITY LOCATION INFORMATION FOR EXCAVATORS
1-800-892-0123
OR 811

PROJECT ENGINEER: RICH DOTSON 309-671-3455
PROJECT MANAGER: ANNA DEVINE 309-671-3475
CATALOG NO. 036134-00D
CONTRACT NO. 68G13



GROSS LENGTH = 310.0 FT. = 0.059 MILE
NET LENGTH = 310.0 FT. = 0.059 MILE

PROJECT DESCRIPTION:
SLOPE REPAIR AND DRAINAGE IMPROVEMENTS
ALONG IL 40 BETWEEN MT. HAWLEY RD AND
NORTHMOOR RD IN PEORIA

STATE OF ILLINOIS
DEPARTMENT OF TRANSPORTATION

SUBMITTED March 19, 2021
James A. James
REGION THREE ENGINEER

May 7, 2021
James A. James
ENGINEER OF DESIGN AND ENVIRONMENT

May 7, 2021
James A. James
DIRECTOR OF HIGHWAYS PROJECT IMPLEMENTATION

PRINTED BY THE AUTHORITY
OF THE STATE OF ILLINOIS

MODEL: D:\p\aut FILE NAME: P:\p\ar-com\st\illinois\p\DOT\Documents\DOT - Offices\District 4\Projects\04-66013\CADData\CADsheets\0466013-sht-500.dgn

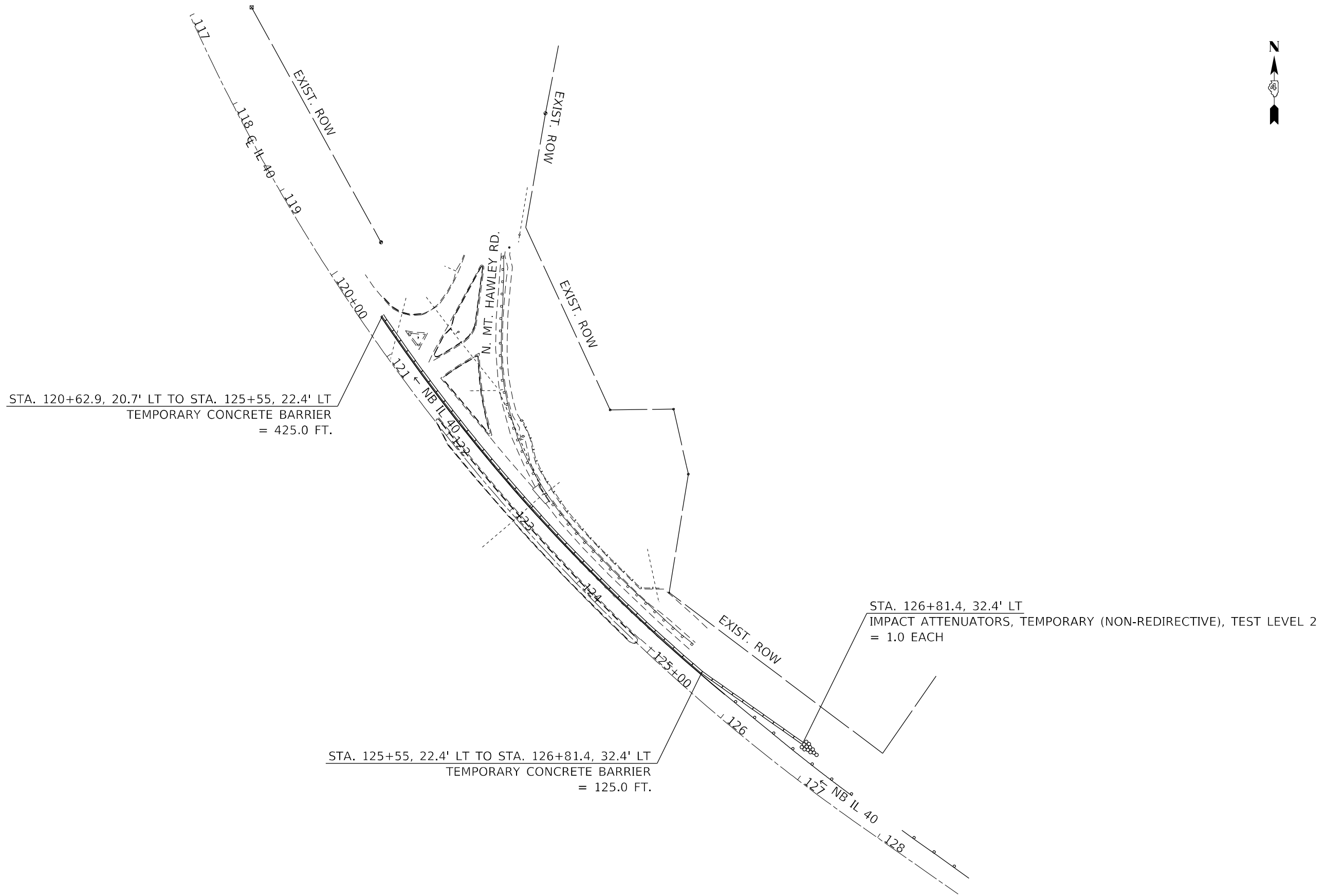
CODE NO.	ITEM	UNIT	TOTAL QUANTITY	CONSTRUCTION CODE	
				0044	
				SLOPE REPAIR	
				100% STATE URBAN	
20100500	TREE REMOVAL , ACRES	ACRE	0.5	0.5	
20200100	EARTH EXCAVATION	CU YD	20	20	
20700110	POROUS GRANULAR EMBANKMENT	TON	4413	4413	
20800150	TRENCH BACKFILL	CU YD	2	2	
28000400	PERIMETER EROSION BARRIER	FOOT	132	132	
28100225	STONE RIPRAP , CLASS B3	TON	770	770	
28100229	STONE RIPRAP , CLASS B5	TON	257	257	
42400100	PORTLAND CEMENT CONCRETE SIDEWALK 4 INCH	SQ FT	220	220	
44000600	SIDEWALK REMOVAL	SQ FT	220	220	
50104400	CONCRETE HEADWALL REMOVAL	EACH	1	1	
50105220	PIPE CULVERT REMOVAL	FOOT	192	192	
54210192	PIPE ELBOW , 36"	EACH	1	1	
54213456	END SECTIONS 21"	EACH	1	1	
54262742	METAL FLARED END SECTIONS 42"	EACH	1	1	

USER NAME = \$USER*	DESIGNED -	REVISED -
	DRAWN -	REVISED -
PLOT SCALE = 1:100	CHECKED -	REVISED -
PLOT DATE = 3/23/2021	DATE -	REVISED -

**STATE OF ILLINOIS
DEPARTMENT OF TRANSPORTATION**

SUMMARY OF QUANTITIES

F.A.P. RTE.	SECTION	COUNTY	TOTAL SHEETS	SHEET NO.
646	(126)SLP-1,DR	PEORIA	29	3
CONTRACT NO. 68G13			ILLINOIS FED. AID PROJECT	



MODEL: Default
 FILE NAME: p:\pub\mroom.dwt\illinois.gov\PIWIDOT\Documents\DOT_Offices\District 4\Projects\ID4_68G13\CADD\DATA\CAD\Sheet\468G13-TRF.dwg

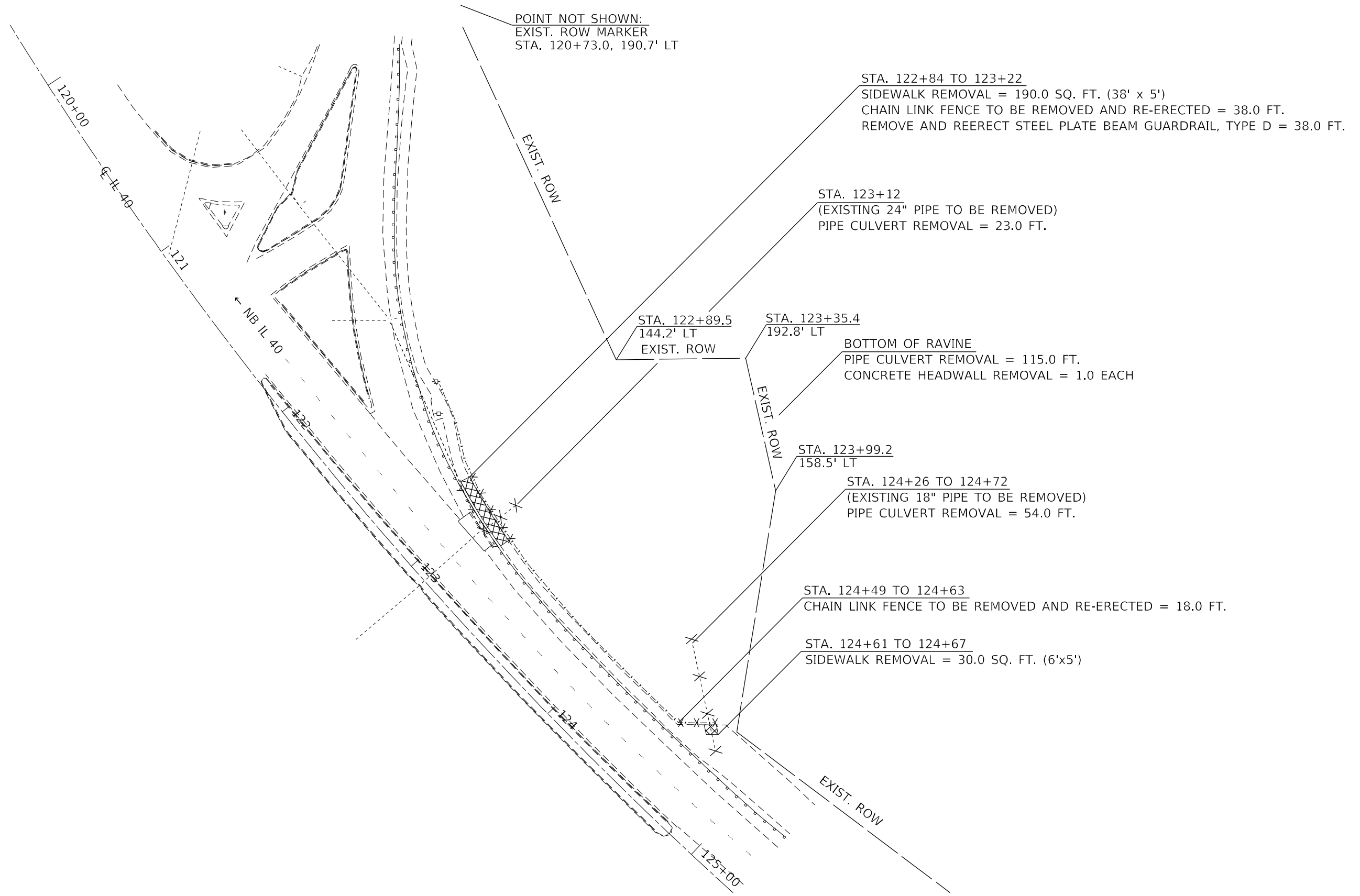
USER NAME = \$USERS	DESIGNED -	REVISED -
	DRAWN -	REVISED -
PLOT SCALE = 1:100	CHECKED -	REVISED -
PLOT DATE = 3/19/2021	DATE -	REVISED -

STATE OF ILLINOIS
DEPARTMENT OF TRANSPORTATION

TRAFFIC CONTROL PLAN

SCALE: SHEET 1 OF 1 SHEETS STA. TO STA.

F.A.P. RTE.	SECTION	COUNTY	TOTAL SHEETS	SHEET NO.
646	(126)SLP-1,DR	PEORIA	29	12
CONTRACT NO. 68G13			ILLINOIS FED. AID PROJECT	



MODEL: Default
 FILE NAME: p:\data\room\dot\illinois.gov\PIWDOT\Documents\DOT_Offices\District_4\Projects\ID4_68G13\CADD\DATA\CAD\Sheet\468G13-rltremoval.dgn

USER NAME = \$USERS	DESIGNED -	REVISED -
	DRAWN -	REVISED -
PLOT SCALE = 1:50	CHECKED -	REVISED -
PLOT DATE = 3/19/2021	DATE -	REVISED -

**STATE OF ILLINOIS
DEPARTMENT OF TRANSPORTATION**

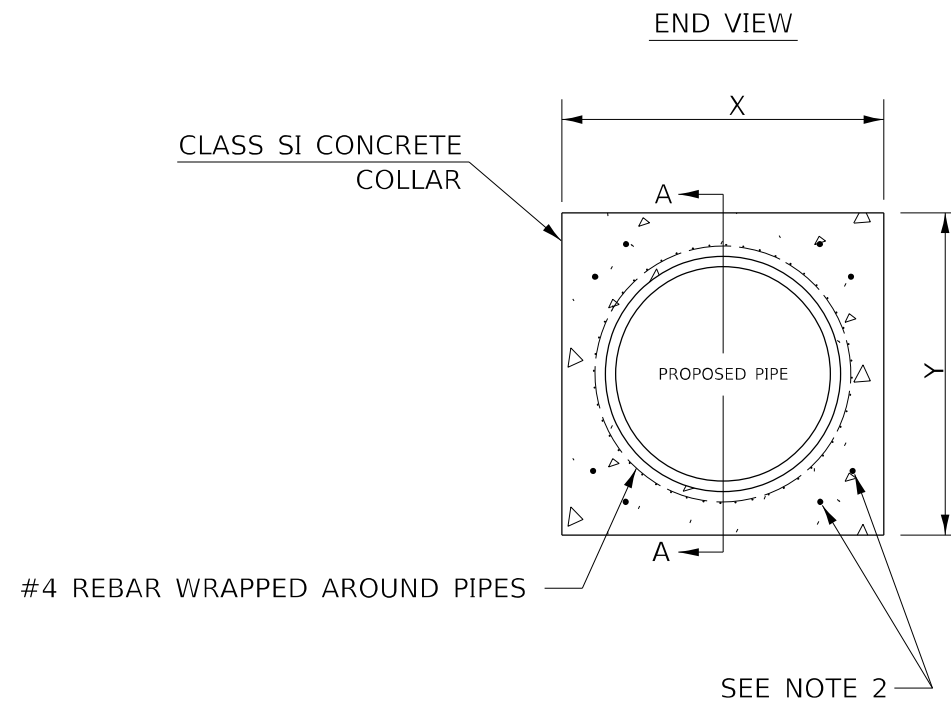
REMOVAL PLAN			
SCALE:	SHEET 1	OF 1	SHEETS
	STA.		TO STA.

F.A.P. RTE.	SECTION	COUNTY	TOTAL SHEETS	SHEET NO.
646	(126)SLP-1,DR	PEORIA	29	13
ILLINOIS FED. AID PROJECT			CONTRACT NO. 68G13	

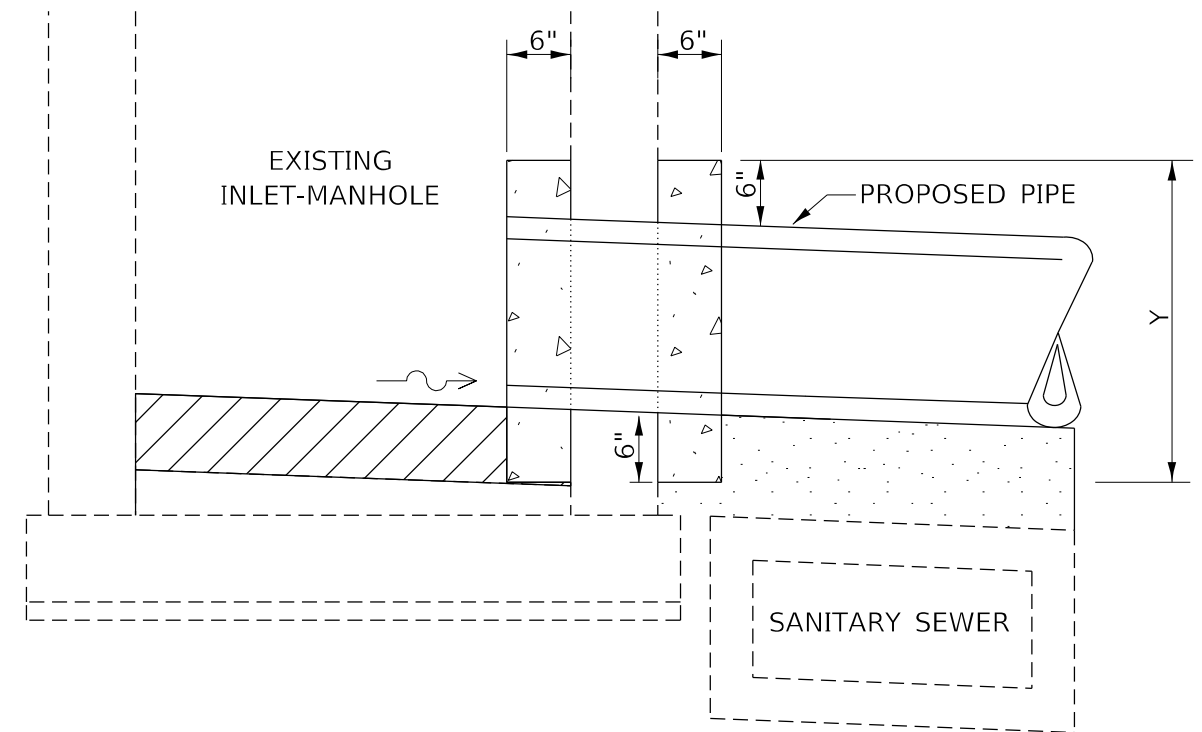
GENERAL NOTES:

1. CLASS SI CONCRETE SHALL BE USED THROUGHOUT.
2. EXPANSION BOLTS (8 PER SIDE), SHALL BE USED AND WILL BE INCLUDED IN THE COST OF INLET-MANHOLE MODIFICATION AND INLET MODIFICATION.
3. THE COLLAR SHALL INCLUDED ALL MATERIAL, EQUIPMENT, LABOR, AND ADDITIONAL WORK REQUIRED TO PROPERLY COMPLETE THE WORK IN PLACE, AS APPROVED BY THE ENGINEER, AND WILL BE PAID AS:
INLET-MANHOLE MODIFICATION AND INLET MODIFICATION.

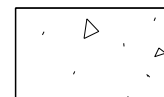
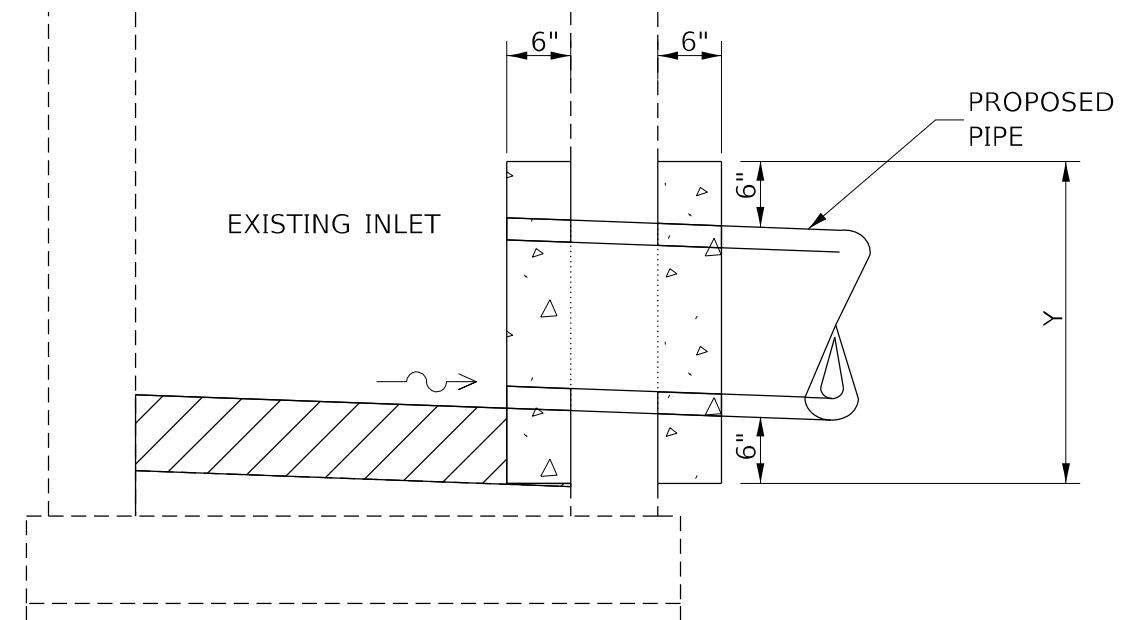
CONCRETE COLLAR BILL OF MATERIALS				
LOCATION	PIPE SIZE (INCH)	X (INCH)	Y (INCH)	CLASS SI CONCRETE (CU YD)
STA. 123+09.7	36	48	48	0.3
STA. 124+51.5	21	33	33	0.2



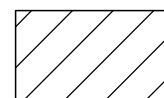
SECTION A-A
STA. 123+09.7



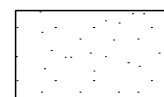
SECTION A-A
STA. 124+51.5



CAST IN PLACE CLASS SI CONCRETE



PROPOSED INVERT (SEE SPECIAL PROVISIONS)



CLSM OR CONCRETE.
(MATERIAL SHALL BE PLACED BETWEEN THE PROPOSED PIPE AND THE EXISTING SANITARY SEWER. A BOND BREAKER SHALL BE PLACED PRIOR TO PLACEMENT OF CLSM OR CONCRETE.)

DRAWING NOT TO SCALE.
ACTUAL FIELD LOCATIONS AND
MEASUREMENTS SHALL BE VERIFIED

MODEL: Default
 FILE NAME: p:\mhammond.dwt\illinois.gov\PIWDOT\Documents\DOT Office\Detailref.dwg
 PROJECT: IDL_68G13\CADD\DATA\CAD\Sheet\DA68G13-INT-DETAIL.dwg

USER NAME = \$USERS	DESIGNED -	REVISED -
PLOT SCALE = 1:100	DRAWN -	REVISED -
PLOT DATE = 3/19/2021	CHECKED -	REVISED -
	DATE -	REVISED -

**STATE OF ILLINOIS
DEPARTMENT OF TRANSPORTATION**

**INLET MODIFICATION &
INLET-MANHOLE MODIFICATION DETAIL**

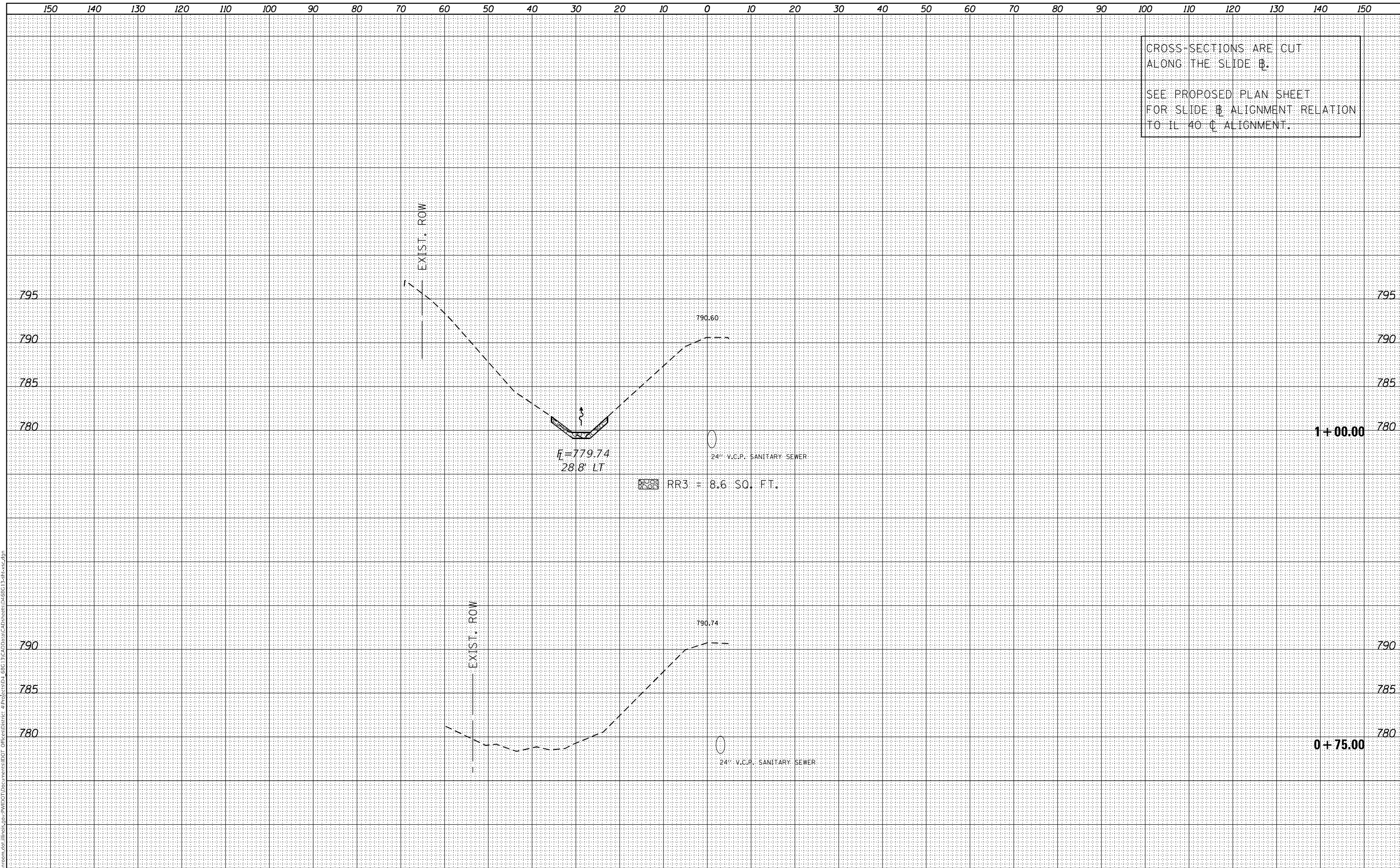
SCALE: SHEET 1 OF 2 SHEETS STA. TO STA.

F.A.P. RTE.	SECTION	COUNTY	TOTAL SHEETS	SHEET NO.
646	(126)SLP-1,DR	PEORIA	29	15
CONTRACT NO. 68G13				
ILLINOIS FED. AID PROJECT				

FINAL SURVEY NO.	SURVEYED	DATE
NOTE BOOK	PLOTTED	
	TEMPLATE	
	AREAS CHECKED	

ORIGINAL SURVEY NO.	SURVEYED	DATE
NOTE BOOK	PLOTTED	
	TEMPLATE	
	AREAS CHECKED	

MODEL: Default
 FILE NAME: D:\all\mason.dwg
 PROJECT: P:\MIDOT\Documents\DOT - Office\Brent - 4\Project\68G13\CD\Drawn\CD\Sheets\68G13-slps-1.dwg



CROSS-SECTIONS ARE CUT ALONG THE SLIDE B.
 SEE PROPOSED PLAN SHEET FOR SLIDE B ALIGNMENT RELATION TO IL 40 C ALIGNMENT.

USER NAME = \$USERS	DESIGNED -	REVISED -
	DRAWN -	REVISED -
PLOT SCALE = 1:20	CHECKED -	REVISED -
PLOT DATE = 3/19/2021	DATE -	REVISED -

**STATE OF ILLINOIS
 DEPARTMENT OF TRANSPORTATION**

CROSS-SECTIONS

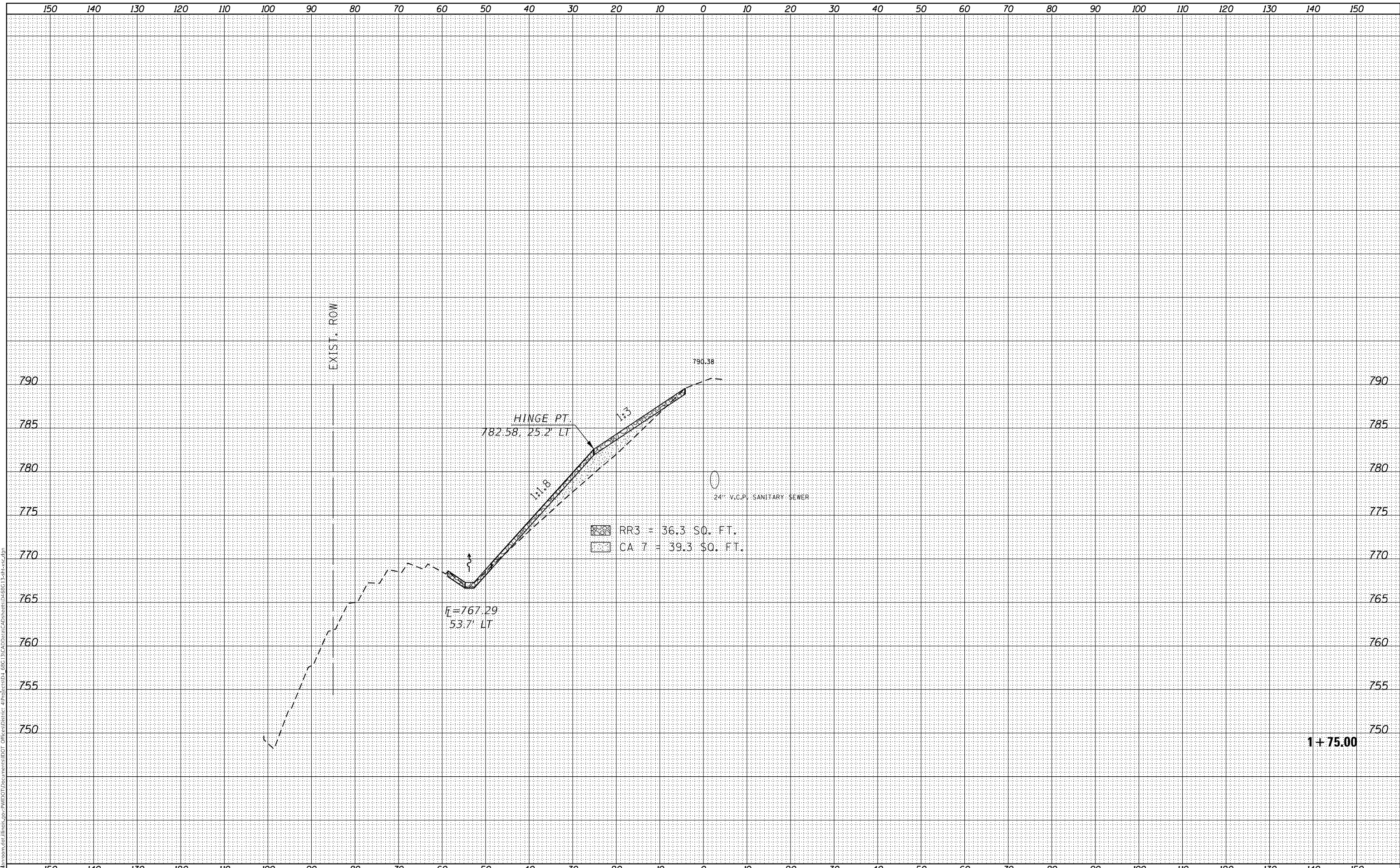
SCALE: SHEET 1 OF 12 SHEETS STA. +75.00 TO STA. 1+00.00

F.A.P. RTE.	SECTION	COUNTY	TOTAL SHEETS	SHEET NO.
646	(126)SLP-1,DR	PEORIA	29	18
CONTRACT NO. 68G13				
ILLINOIS		FED. AID PROJECT		

FINAL SURVEY NO.	SURVEYED	DATE
NOTE BOOK	FLOTTED	
AREAS CHECKED	TEMPLATE	
	AREAS CHECKED	

ORIGINAL SURVEY NO.	SURVEYED	DATE
NOTE BOOK	FLOTTED	
AREAS CHECKED	TEMPLATE	
	AREAS CHECKED	

MODEL: Default
 FILE NAME: D:\data\mason.dwg
 PROJECT: P:\MIDOT\Documents\DOT - Office\Brent - 4\Project\68G 13\CA\Drawn\CA\Drawn\68G 13-ss-ss.dwg



USER NAME = \$USERS	DESIGNED -	REVISIED -
	DRAWN -	REVISIED -
PLOT SCALE = 1:20	CHECKED -	REVISIED -
PLOT DATE = 3/19/2021	DATE -	REVISIED -

**STATE OF ILLINOIS
 DEPARTMENT OF TRANSPORTATION**

CROSS-SECTIONS

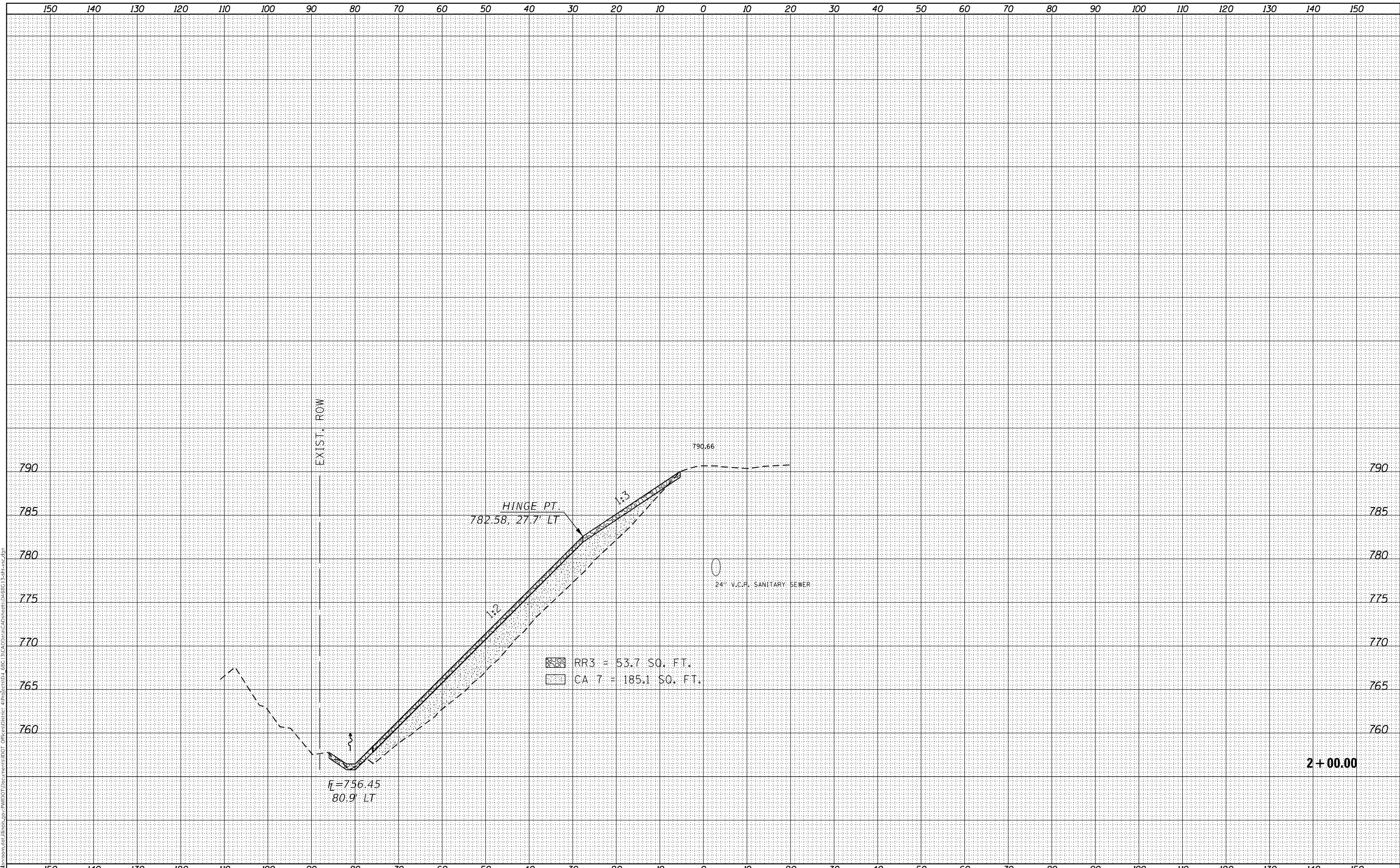
SCALE: SHEET 3 OF 12 SHEETS STA. 1+75.00 TO STA. 1+75.00

F.A.P. RTE.	SECTION	COUNTY	TOTAL SHEETS	SHEET NO.
646	(126)SLP-1,DR	PEORIA	29	20
			CONTRACT NO. 68G13	
		ILLINOIS	FED. AID PROJECT	

FINAL SURVEY NO.	SURVEYED	DATE
NOTE BOOK	PLOTTED	
	TEMPLATE	
	AREAS CHECKED	

ORIGINAL SURVEY NO.	SURVEYED	DATE
NOTE BOOK	PLOTTED	
	TEMPLATE	
	AREAS CHECKED	

MODEL: Default
 FILE NAME: D:\data\mason.dwg
 PROJECT: P:\MIDOT\Documents\DOT - Office\Brent - 4\Project\68G13\CA\Drawn\CA\Drawn\68G13-ansys.dwg

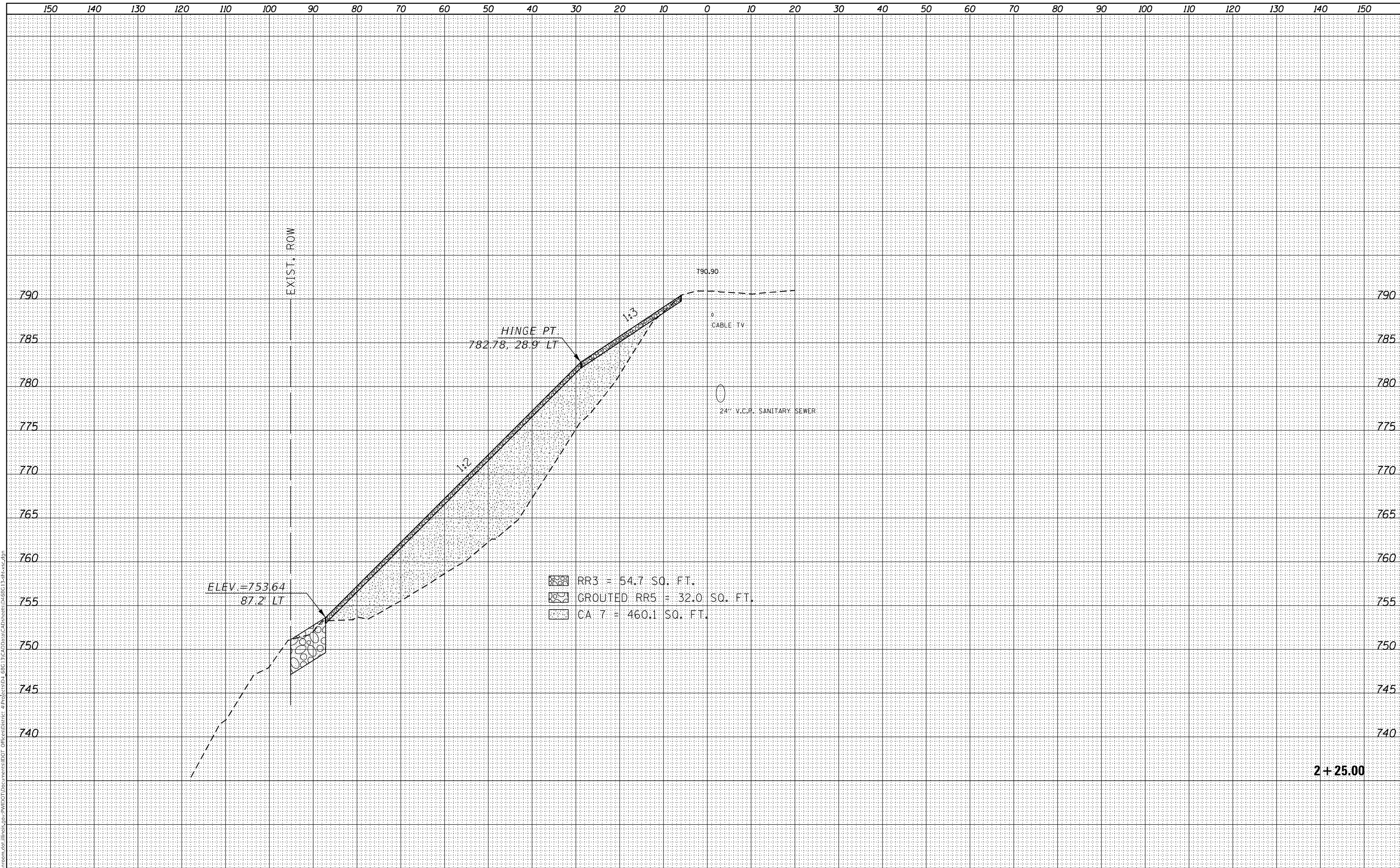


USER NAME = \$USERS	DESIGNED -	REVISED -	STATE OF ILLINOIS DEPARTMENT OF TRANSPORTATION		CROSS-SECTIONS		F.A.P. RTE. 646	SECTION (126)SLP-1,DR	COUNTY PEORIA	TOTAL SHEETS 29	SHEET NO. 21			
PLOT SCALE = 1:20	CHECKED -	REVISED -					SCALE:	SHEET 4	OF 12 SHEETS	STA. 2+00.00	TO STA. 2+00.00	CONTRACT NO. 68G13		
PLOT DATE = 3/19/2021	DATE -	REVISED -					ILLINOIS FED. AID PROJECT							

FINAL SURVEY NO.	SURVEYED	DATE
NOTE BOOK	PLOTTED	
	TEMPLATE	
	AREAS CHECKED	

ORIGINAL SURVEY NO.	SURVEYED	DATE
	PLOTTED	
	TEMPLATE	
	AREAS CHECKED	

MODEL: Default
 FILE NAME: D:\data\mason.dwg
 USER: P:\IDOT\Documents\DOT - Office\Brent - 68G13\CA\Drawings\CA\Sheets\68G13-Subsec.dgn



2 + 25.00

USER NAME = S\USERS	DESIGNED -	REVISED -
	DRAWN -	REVISED -
PLOT SCALE = 1:20	CHECKED -	REVISED -
PLOT DATE = 3/19/2021	DATE -	REVISED -

**STATE OF ILLINOIS
 DEPARTMENT OF TRANSPORTATION**

CROSS-SECTIONS

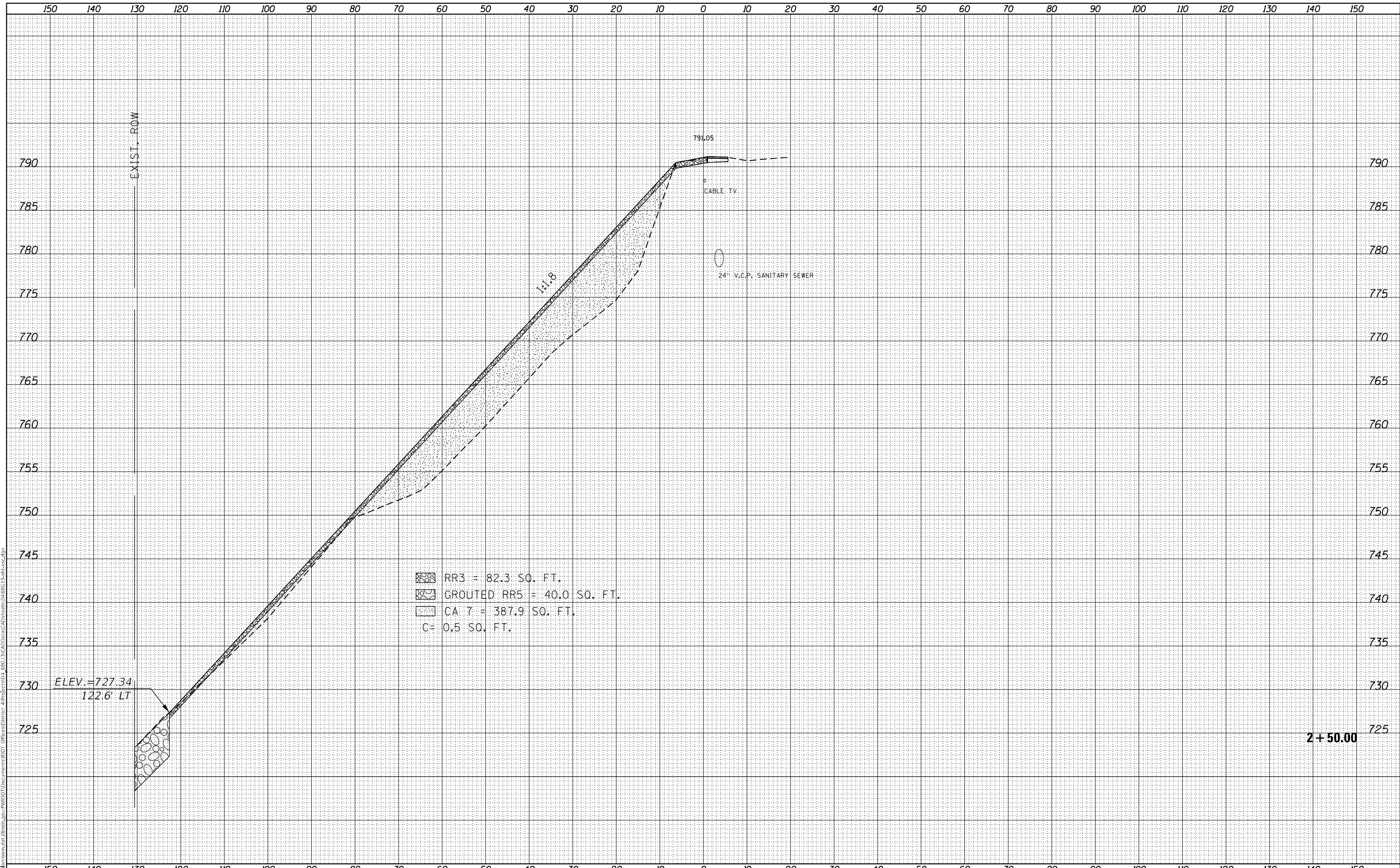
SCALE: SHEET 5 OF 12 SHEETS STA. 2+25.00 TO STA. 2+25.00

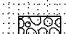
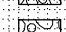
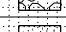

F.A.P. RTE. 646	SECTION (126)SLP-1,DR	COUNTY PEORIA	TOTAL SHEETS 29	SHEET NO. 22
			CONTRACT NO. 68G13	
		ILLINOIS FED. AID PROJECT		

DATE	
BY	
SURVEYED	
PLOTTED	
TEMPLATE	
AREAS CHECKED	
FINAL SURVEY	
NOTE BOOK	
NO.	

DATE	
BY	
SURVEYED	
PLOTTED	
TEMPLATE	
AREAS CHECKED	
ORIGINAL SURVEY	
NOTE BOOK	
NO.	

MODEL: Default
 FILE NAME: D:\data\mason.dwg
 PROJECT: ILLINOIS DOT
 PROJECT ID: 68G13
 CAD/DRWAL: CA
 SHEETS: 0468G13-2-10-25.dwg
 OFFICE: ILLINOIS DOT



-  RR3 = 82.3 SQ. FT.
-  GROUTED RR5 = 40.0 SQ. FT.
-  CA 7 = 387.9 SQ. FT.
-  C = 0.5 SQ. FT.

**STATE OF ILLINOIS
 DEPARTMENT OF TRANSPORTATION**

CROSS-SECTIONS

USER NAME = SUSERS	DESIGNED -	REVISED -
PLOT SCALE = 1:20	DRAWN -	REVISED -
PLOT DATE = 3/19/2021	CHECKED -	REVISED -
	DATE -	REVISED -

SCALE: SHEET 6 OF 12 SHEETS STA. 2+50.00 TO STA. 2+50.00

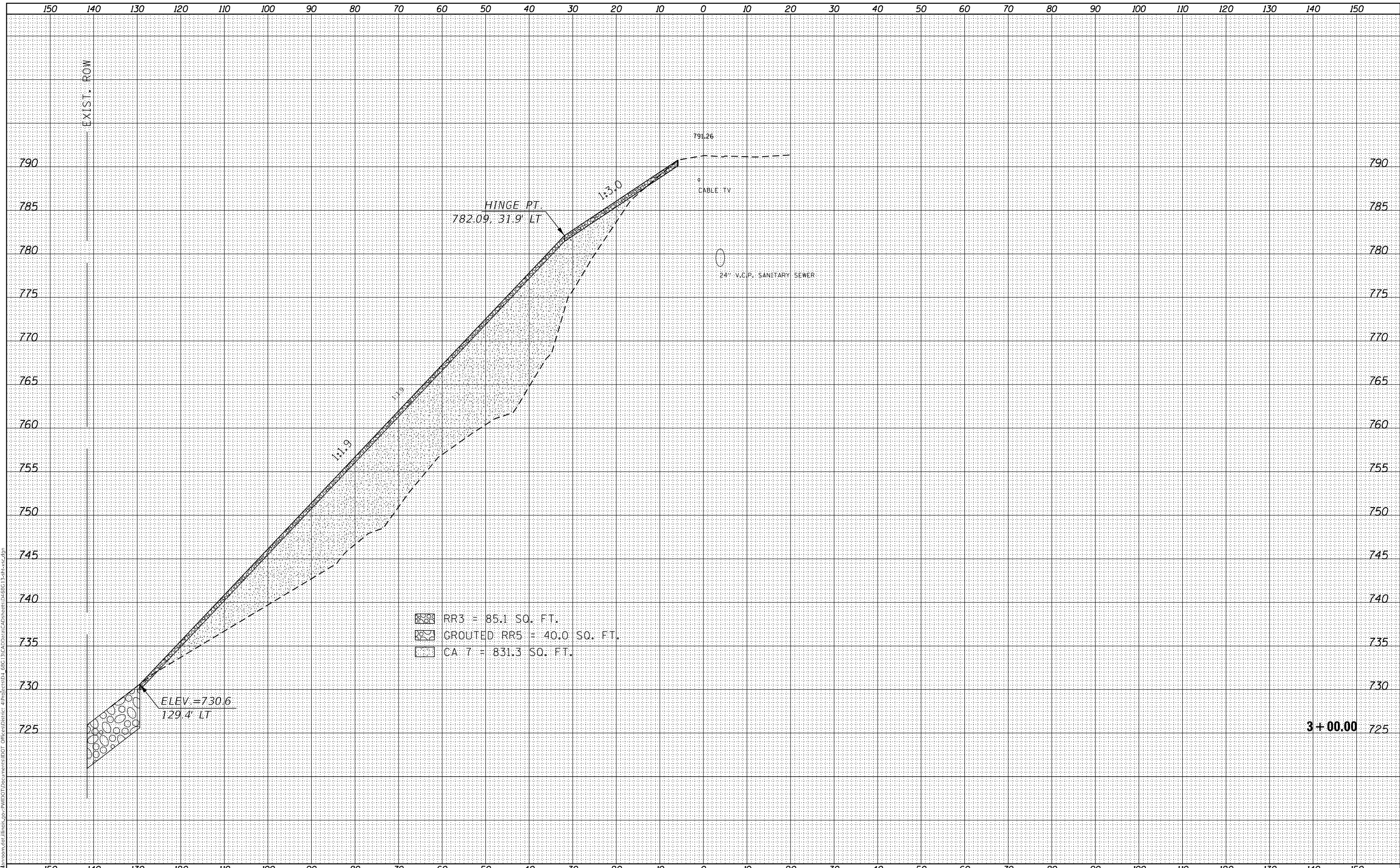
F.A.P. RTE.	SECTION	COUNTY	TOTAL SHEETS	SHEET NO.
646	(126)SLP-1,DR	PEORIA	29	23
CONTRACT NO. 68G13			ILLINOIS FED. AID PROJECT	

2 + 50.00

DATE	
BY	
FINAL SURVEY	SURVEYED
NOTE BOOK	PLOTTED
NO.	TEMPLATE
	AREAS CHECKED

DATE	
BY	
ORIGINAL SURVEY	SURVEYED
NOTE BOOK	PLOTTED
NO.	TEMPLATE
	AREAS CHECKED

MODEL: Default
 FILE NAME: \\s:\data\mason.dwg
 PROJECT: \\s:\data\mason.dwg
 USER: P:\MIDOT\Documents\DOT - Office\mason.dwg
 PROJECT: 68G 3(CAD)\Drawn\CAD\Drawn\68G 3-Subsect.dwg



- RR3 = 85.1 SQ. FT.
- GROUTED RR5 = 40.0 SQ. FT.
- CA 7 = 831.3 SQ. FT.

ELEV. = 730.6
 129.4' LT

HINGE PT
 782.09, 31.9' LT

791.26
 CABLE TV
 24" V.C.P. SANITARY SEWER

3 + 00.00

USER NAME = susers	DESIGNED -	REVISED -
	DRAWN -	REVISED -
PLOT SCALE = 1:20	CHECKED -	REVISED -
PLOT DATE = 3/19/2021	DATE -	REVISED -

**STATE OF ILLINOIS
 DEPARTMENT OF TRANSPORTATION**

CROSS-SECTIONS

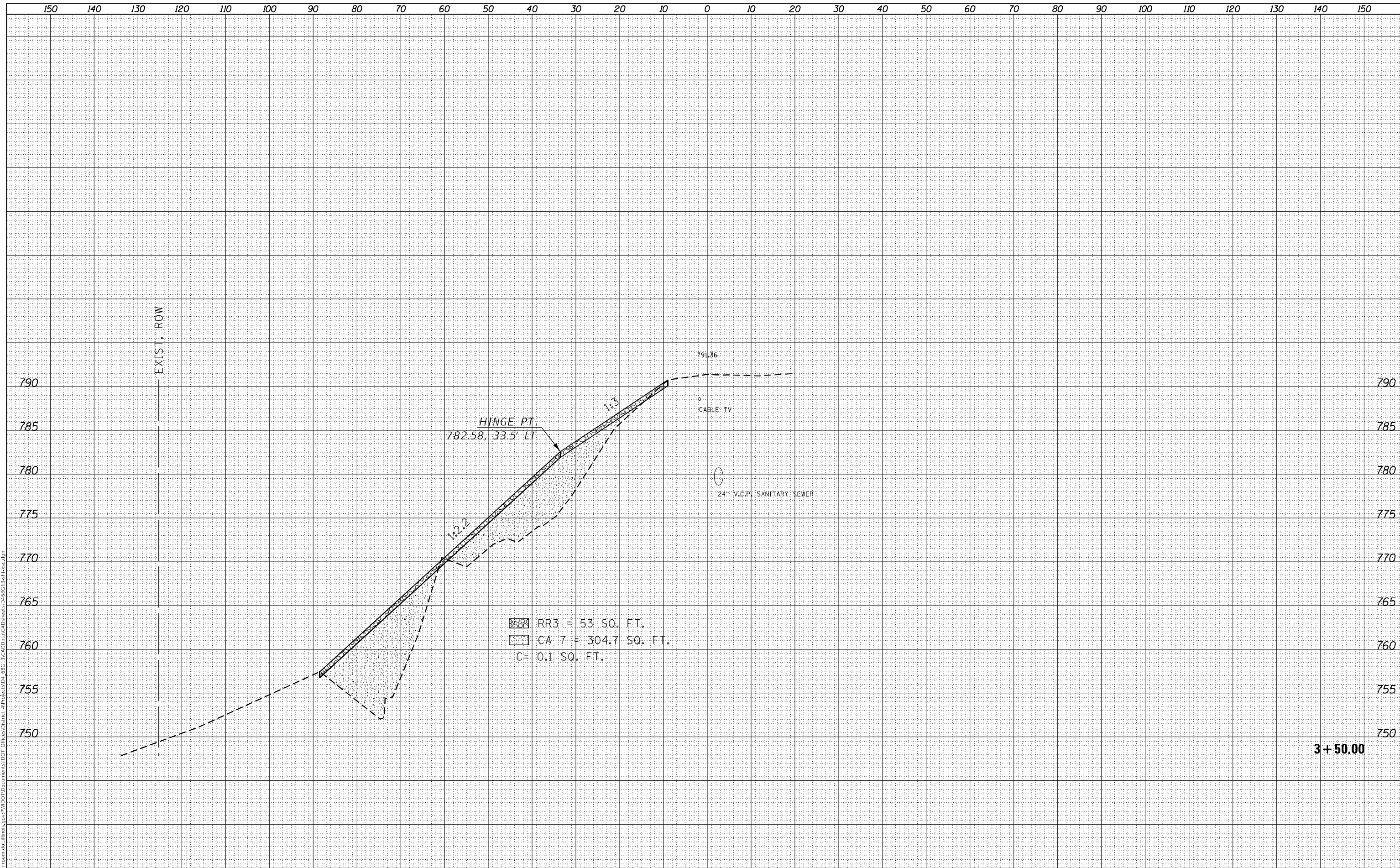
SCALE: SHEET 8 OF 12 SHEETS STA. 3+00.00 TO STA. 3+00.00

F.A.P. RTE.	SECTION	COUNTY	TOTAL SHEETS	SHEET NO.
646	(126)SLP-1,DR	PEORIA	29	25
			CONTRACT NO. 68G13	
		ILLINOIS	FED. AID PROJECT	

FINAL SURVEY NO.	SURVEYED	BY	DATE
NOTE BOOK	FLOTTED		
AREAS CHECKED	TEMPLATE		
	AREAS CHECKED		

ORIGINAL SURVEY NO.	SURVEYED	BY	DATE
	FLOTTED		
	TEMPLATE		
	AREAS CHECKED		

MODEL: Default
 FILE NAME: D:\data\mason.dwg Illinois - PWIDOT Documents\DOT - Office\Brent - 68G\3\CA\Drawn\CA\Sheets\68G 13-shsxc.dwg



- RR3 = 53 SQ. FT.
- CA 7 = 304.7 SQ. FT.
- C = 0.1 SQ. FT.

EXIST. ROW

3 + 50.00

USER NAME = \$USERS	DESIGNED -	REVISED -
PLOT SCALE = 1:20	DRAWN -	REVISED -
PLOT DATE = 3/19/2021	CHECKED -	REVISED -
	DATE -	REVISED -

**STATE OF ILLINOIS
DEPARTMENT OF TRANSPORTATION**

CROSS-SECTIONS

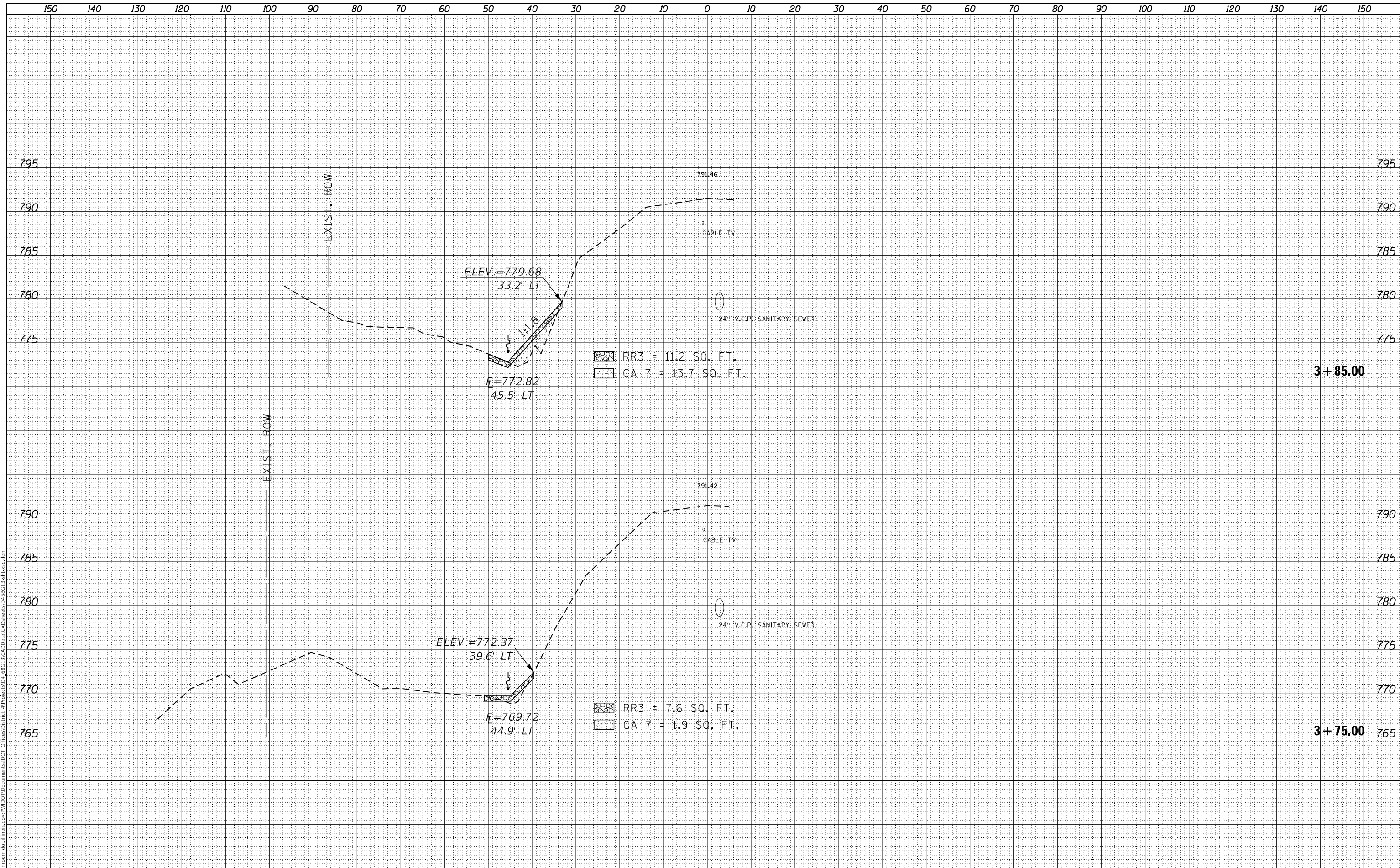
SCALE: SHEET 10 OF 12 SHEETS STA. 3+50.00 TO STA. 3+50.00

F.A.P. RTE.	SECTION	COUNTY	TOTAL SHEETS	SHEET NO.
646	(126)SLP-1,DR	PEORIA	29	27
			CONTRACT NO. 68G13	
		ILLINOIS	FED. AID PROJECT	

DATE	
BY	
SURVEYED	
PLOTTED	
TEMPLATE	
NOTE BOOK	
AREAS CHECKED	
NO.	

DATE	
BY	
SURVEYED	
PLOTTED	
TEMPLATE	
NOTE BOOK	
AREAS CHECKED	
NO.	

MODEL: Default
 FILE NAME: D:\data\mason.dwg
 PROJECT: I:\projects\68G13\CA\Drawings\CA\Drawings\68G13-Subsect.dwg
 USER: jmc
 DATE: 3/19/2021



USER NAME = \$USERS	DESIGNED -	REVISED -
	DRAWN -	REVISED -
PLOT SCALE = 1:20	CHECKED -	REVISED -
PLOT DATE = 3/19/2021	DATE -	REVISED -

**STATE OF ILLINOIS
DEPARTMENT OF TRANSPORTATION**

CROSS-SECTIONS

SCALE: SHEET 11 OF 12 SHEETS STA. 3+75.00 TO STA. 3+85.00

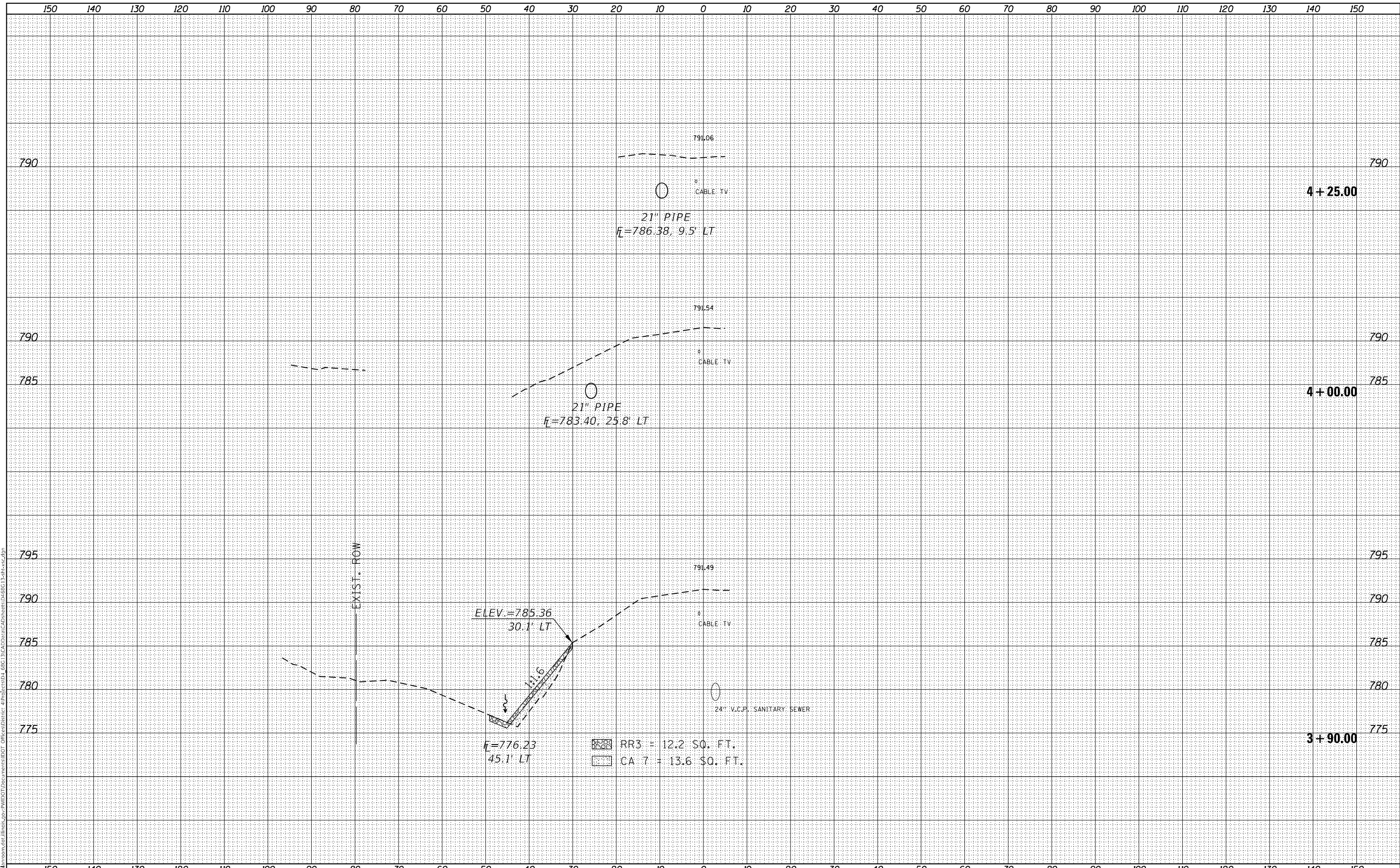
F.A.P. RTE.	SECTION	COUNTY	TOTAL SHEETS	SHEET NO.
646	(126)SLP-1,DR	PEORIA	29	28
CONTRACT NO. 68G13				

ILLINOIS FED. AID PROJECT

FINAL SURVEY NO.	SURVEYED	DATE
NOTE BOOK	PLOTTED	
	TEMPLATE	
	AREAS CHECKED	

ORIGINAL SURVEY NO.	SURVEYED	DATE
NOTE BOOK	PLOTTED	
	TEMPLATE	
	AREAS CHECKED	

MODEL: Default
 FILE NAME: D:\data\mason.dwg
 PROJECT: I:\projects\68G\3\CAD\Drawn\CADsheets\68G13-ss-ss.dwg



USER NAME = \$USERS	DESIGNED -	REVISED -
	DRAWN -	REVISED -
PLOT SCALE = 1:20	CHECKED -	REVISED -
PLOT DATE = 3/19/2021	DATE -	REVISED -

**STATE OF ILLINOIS
 DEPARTMENT OF TRANSPORTATION**

CROSS-SECTIONS

SCALE: SHEET 12 OF 12 SHEETS STA. 3+90.00 TO STA. 4+25.00

F.A.P. RTE.	SECTION	COUNTY	TOTAL SHEETS	SHEET NO.
646	(126)SLP-1,DR	PEORIA	29	29
			CONTRACT NO. 68G13	
		ILLINOIS	FED. AID PROJECT	