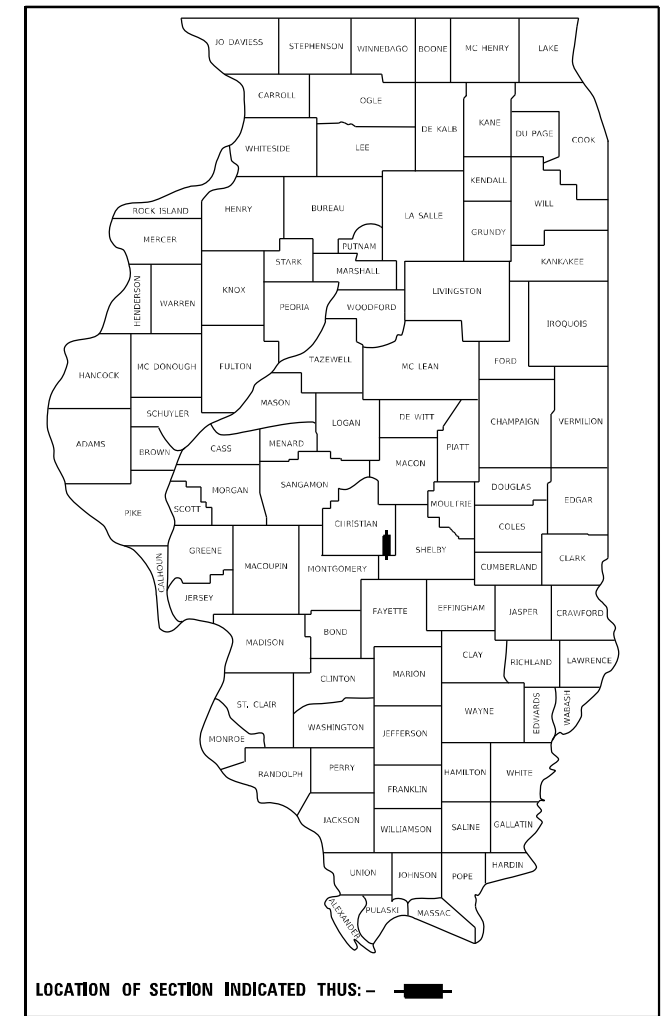


STATE OF ILLINOIS
DEPARTMENT OF TRANSPORTATION

F.A.P. RTE.	SECTION	COUNTY	TOTAL SHEETS	SHEET NO.
322	(19)RS-7	CHRISTIAN	23	1
		ILLINOIS	CONTRACT NO. 72L80	

D-96-046-20



INDEX OF SHEETS

- 1 COVER SHEET
- 2 GENERAL NOTES
- 3-5 SUMMARY OF QUANTITIES
- 6-12 SCHEDULE OF QUANTITIES
- 13-15 TYPICAL SECTIONS
- 16 SURVEY MARKERS
- 17-20 PLAN SHEETS
- 21-22 ENTRANCE DETAILS
- 23 JOINT DETAILS AND TEMPORARY RAMP DETAILS

HIGHWAY STANDARDS

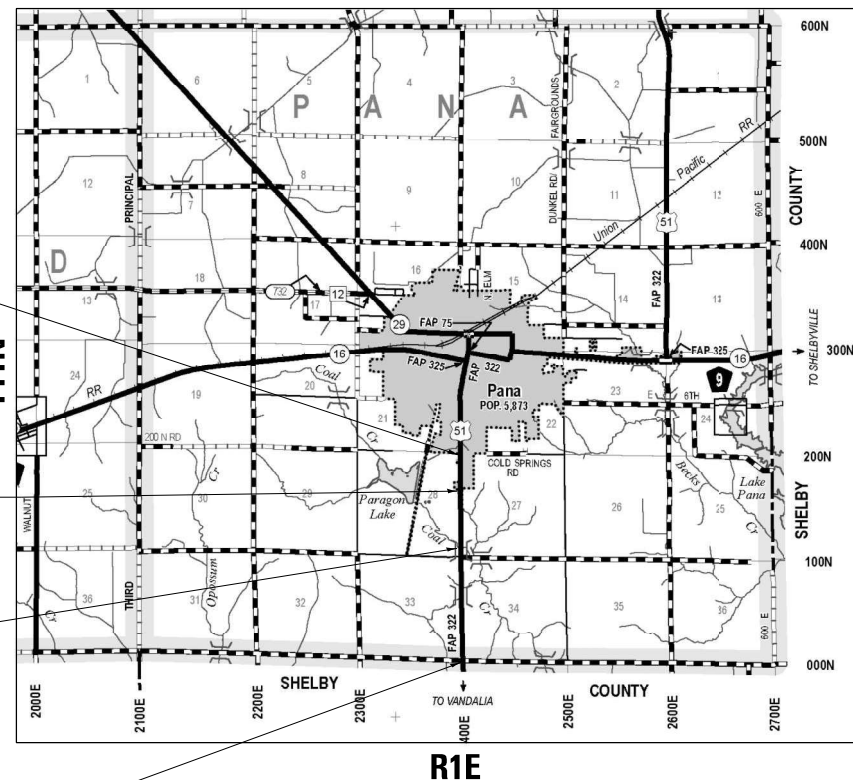
000001-08	630001-12
630301-09	631031-17
667101-02	701001-02
701006-05	701011-04
701301-04	701306-04
701311-03	701326-04
701901-08	780001-05
781001-04	782006-01

PROPOSED
HIGHWAY PLANS

F.A.P. ROUTE 322 (US 51)
SECTION (19)RS-7
PROJECT NHPP-JKVX(970)
3P STANDARD OVERLAY
CHRISTIAN COUNTY

C-96-070-20

R1E

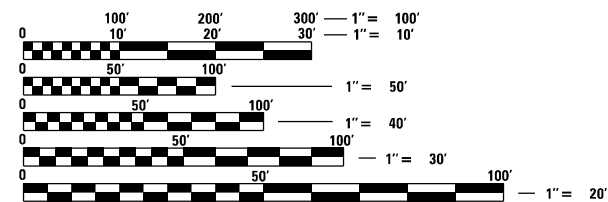


END IMPROVEMENT
STA 1511 + 45.78

STATION EQUATION
STA 1485 + 96.00 BK =
STA 1486 + 00.00 AH

BRIDGE OMISSION
SN 011-0039
STA 1463 + 95.64 TO
STA 1464 + 54.70

BEGIN IMPROVEMENT
STA 1405 + 81.00



FULL SIZE PLANS HAVE BEEN PREPARED USING STANDARD ENGINEERING SCALES, REDUCED SIZED PLANS WILL NOT CONFORM TO STANDARD SCALES. IN MAKING MEASUREMENTS ON REDUCED PLANS, THE ABOVE SCALES MAY BE USED.

J.U.L.I.E.
JOINT UTILITY LOCATION INFORMATION FOR EXCAVATORS
1-800-892-0123
OR 811

PROJECT ENGINEER: JON KELLEY (217) 785-2735
PROJECT MANAGER: CHRIS SIEFERT (217) 524-7940

CONTRACT NO. 72L80

GROSS LENGTH = 10,560.78 FT. = 2.000 MILE
NET LENGTH = 10,501.72 FT. = 1.989 MILE

ROADWAY CLASSIFICATION
OTHER PRINCIPAL ARTERIAL
ADT = 3,775 (2019)
PV = 86.4% SU = 4.0% MU = 9.6%

STATE OF ILLINOIS
DEPARTMENT OF TRANSPORTATION

SUBMITTED March 22, 2021

Jon P. Meyer
REGIONAL ENGINEER

May 7, 2021
Scott A. Etkin
ENGINEER OF DESIGN AND ENVIRONMENT

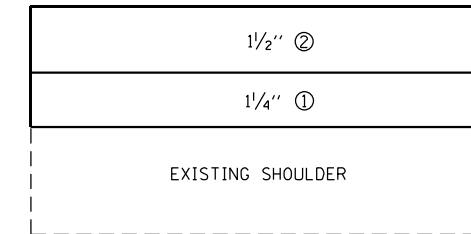
May 7, 2021
James M. Gurn
DIRECTOR OF HIGHWAYS PROJECT IMPLEMENTATION

PRINTED BY THE AUTHORITY
OF THE STATE OF ILLINOIS

GENERAL NOTES:

- NO PASSING ZONES TO BE FIELD VERIFIED BY THE DISTRICT 6 BUREAU OF OPERATIONS. THE RESIDENT ENGINEER SHALL NOTIFY THE BUREAU OF OPERATIONS AT LEAST 14 DAYS PRIOR TO PLACEMENT OF FINAL PERMANENT PAVEMENT MARKING (217) 785-5306.

MIXTURE USE:	HMA SHOULDER, LOWER LIFT ①	HMA SHOULDER, UPPER LIFT ②
PG:	PG 64-22	PG 64-22
DESIGN AIR VOIDS:	4.0% @ N50	4.0% @ N50
MIXTURE COMPOSITION:	IL 9.5FG	IL 9.5
FRICTION AGGREGATE:	N/A	MIX C
QUALITY MANAGEMENT:	QC/QA	QC/QA
SUBLOT SIZE:	N/A	N/A



HMA SHOULDERS RESURFACING LIFT DIAGRAM

MIXTURE REQUIREMENTS

MIXTURE USE:	HMA SURFACE	HMA BINDER	HMA SHOULDER & INCIDENTAL HMA
PG:	PG 64-22	PG 64-22	PG 64-22
DESIGN AIR VOIDS:	4.0% @ N50	4.0% @ N50	4.0% @ N50
MIXTURE COMPOSITION:	IL 9.5	IL 9.5FG	IL 9.5
FRICTION AGGREGATE:	MIX C	N/A	MIX C
QUALITY MANAGEMENT:	QCP	QCP	QC/QA
SUBLOT SIZE:	1000 TONS	1000 TONS	N/A

RATES OF APPLICATION USED TO CALCULATE PLAN QUANTITIES

HMA SURFACE/BINDER COURSE	0.056 TONS/(SQ YD - IN)
BITUMINOUS MATERIALS TACK COAT - (EXISTING HMA, MILLED SURFACE)	0.05 POUNDS/SQ FT
BITUMINOUS MATERIALS TACK COAT - (BETWEEN HMA LIFTS)	0.025 POUNDS/SQ FT
BITUMINOUS MATERIALS PRIME COAT - (AGGREGATE BASES)	0.25 POUNDS/SQ FT
GRANULAR MATERIALS	1.60 TONS/CU YD

**STATE OF ILLINOIS
DEPARTMENT OF TRANSPORTATION
DIVISION OF HIGHWAYS
DISTRICT 6**

EXAMINED March 15 2021
[Signature]
ENGINEER OF OPERATIONS

EXAMINED March 10 2021
[Signature]
ENGINEER OF PROJECT IMPLEMENTATION

EXAMINED March 17 2021
[Signature]
ENGINEER OF PROGRAM DEVELOPMENT

MODEL: Default
FILE NAME: p:\mhammon.dwt\illinois.gov\pwwd\DOT\Documents\DOT_Offices\District 6\Projects\DE72L80\CADD\DATA\CAD\Projects\DE72L80\pht-cemrncs.dgn

USER NAME = slieferca	DESIGNED -	REVISED -
	DRAWN -	REVISED -
PLOT SCALE = 20,0000 * / in.	CHECKED -	REVISED -
PLOT DATE = 3/22/2021	DATE -	REVISED -

**STATE OF ILLINOIS
DEPARTMENT OF TRANSPORTATION**

**FAP 322 (US 51)
GENERAL NOTES**

SCALE: NONE SHEET 1 OF 1 SHEETS STA. N/A TO STA. N/A

F.A.P. RTE.	SECTION	COUNTY	TOTAL SHEETS	SHEET NO.
322	(19)RS-7	CHRISTIAN	23	2
CONTRACT NO. 72L80				
ILLINOIS FED. AID PROJECT				

CODE NO.	ITEM	UNIT	TOTAL QUANTITY	CONSTR. CODE	
				ROADWAY	RURAL
				6-01448-0000	80% FED/20% STATE
20200100	EARTH EXCAVATION	CU YD	610	610	
25000200	SEEDING, CLASS 2	ACRE	0.5	0.5	
25000400	NITROGEN FERTILIZER NUTRIENT	POUND	45	45	
25000500	PHOSPHORUS FERTILIZER NUTRIENT	POUND	45	45	
25000600	POTASSIUM FERTILIZER NUTRIENT	POUND	45	45	
25100115	MULCH, METHOD 2	ACRE	0.5	0.5	
35101800	AGGREGATE BASE COURSE, TYPE B 6"	SQ YD	1317	1317	
35102000	AGGREGATE BASE COURSE, TYPE B 8"	SQ YD	82	82	
40200800	AGGREGATE SURFACE COURSE, TYPE B	TON	13	13	
40600290	BITUMINOUS MATERIALS (TACK COAT)	POUND	23586	23586	
40600982	HOT-MIX ASPHALT SURFACE REMOVAL - BUTT JOINT	SQ YD	813	813	
40600985	PORTLAND CEMENT CONCRETE SURFACE REMOVAL - BUTT JOINT	SQ YD	95	95	
40600990	TEMPORARY RAMP	SQ YD	151	151	
40602965	HOT-MIX ASPHALT BINDER COURSE, IL-9.5FG. N50	TON	2051	2051	

MODEL: Default
 FILE NAME: p:\pub\mroom.dwt
 ILLINOIS DOT
 PROJECT: D672L80\CADD\DATA\CAD\PROJECTS\D672L80\PH-500.dgn

USER NAME = slfercca	DESIGNED -	REVISED -
	DRAWN -	REVISED -
PLOT SCALE = 40,0000 * / in.	CHECKED -	REVISED -
PLOT DATE = 3/22/2021	DATE -	REVISED -

STATE OF ILLINOIS
DEPARTMENT OF TRANSPORTATION

FAP 322 (US 51) SUMMARY OF QUANTITIES			
SCALE: NONE	SHEET 1	OF 3 SHEETS	TO STA. N/A

F.A.P. RTE. 322	SECTION (19)RS-7	COUNTY CHRISTIAN	TOTAL SHEETS 23	SHEET NO. 3
ILLINOIS FED. AID PROJECT			CONTRACT NO. 72L80	

CODE NO.	ITEM	UNIT	TOTAL QUANTITY	CONSTR. CODE	
				ROADWAY	RURAL
				6-01448-0000	
				80% FFD/20% STATE	
				0005	
40604050	HOT-MIX ASPHALT SURFACE COURSE, 1L-9.5, MIX "C", N50	TON	2461	2461	
40800050	INCIDENTAL HOT-MIX ASPHALT SURFACING	TON	438	438	
44000155	HOT-MIX ASPHALT SURFACE REMOVAL, 1 1/2"	SQ YD	29277	29277	
44000160	HOT-MIX ASPHALT SURFACE REMOVAL, 2 3/4"	SQ YD	1671	1671	
44000200	DRIVEWAY PAVEMENT REMOVAL	SQ YD	29	29	
48102100	AGGREGATE WEDGE SHOULDER, TYPE B	TON	167	167	
48203018	HOT-MIX ASPHALT SHOULDERS, 5 1/4"	SQ YD	102	102	
48203100	HOT-MIX ASPHALT SHOULDERS	TON	186	186	
50105220	PIPE CULVERT REMOVAL	FOOT	75	75	
* 63000001	STEEL PLATE BEAM GUARDRAIL, TYPE A, 6 FOOT POSTS	FOOT	250	250	
* 63100085	TRAFFIC BARRIER TERMINAL, TYPE 6	EACH	4	4	
* 63100167	TRAFFIC BARRIER TERMINAL, TYPE 1 (SPECIAL) TANGENT	EACH	4	4	
63200310	GUARDRAIL REMOVAL	FOOT	592	592	
67000400	ENGINEER'S FIELD OFFICE, TYPE A	CAL MO	6	6	

* SPECIALTY ITEM

MODEL: Default
 FILE NAME: p:\planningroom\dot\illinois\gov\PIWDOT\Documents\DOT_Offices\District_6\Projects\DE72L80\CADD\DATA\CAD\Projects\DE72L80\PH-500.dgn

USER NAME = slfercca	DESIGNED -	REVISED -
	DRAWN -	REVISED -
PLOT SCALE = 40,0000 * / in.	CHECKED -	REVISED -
PLOT DATE = 3/22/2021	DATE -	REVISED -

**STATE OF ILLINOIS
DEPARTMENT OF TRANSPORTATION**

**FAP 322 (US 51)
SUMMARY OF QUANTITIES**

SCALE: NONE SHEET 2 OF 3 SHEETS STA. N/A TO STA. N/A

F.A.P. RTE.	SECTION	COUNTY	TOTAL SHEETS	SHEET NO.
322	(19)RS-7	CHRISTIAN	23	4
			CONTRACT NO. 72L80	
ILLINOIS FED. AID PROJECT				

MODEL: Default
 FILE NAME: p:\data\mtr\room.dwt\illinois.gov\PWIDOT\Documents\DOT_Offices\District 6\Projects\DE72L80\CADD\DATA\CAD\Projects\DE72L80\PH-500.dgn

				CONSTR. CODE	
				6-01448-0000	
				80% FED/20% STATE	
CODE NO.	ITEM	UNIT	TOTAL QUANTITY	ROADWAY	
				0005	RURAL
67100100	MOBILIZATION	L SUM	1	1	
70100460	TRAFFIC CONTROL AND PROTECTION, STANDARD 701306	L SUM	1	1	
70100500	TRAFFIC CONTROL AND PROTECTION, STANDARD 701326	L SUM	1	1	
70107025	CHANGEABLE MESSAGE SIGN	CAL DA	28	28	
70300100	SHORT TERM PAVEMENT MARKING	FOOT	3339	3339	
70300150	SHORT TERM PAVEMENT MARKING REMOVAL	SQ FT	371	371	
* 72501000	TERMINAL MARKER - DIRECT APPLIED	EACH	4	4	
* 78009005	MODIFIED URETHANE PAVEMENT MARKING - LINE 5"	FOOT	32510	32510	
* 78100100	RAISED REFLECTIVE PAVEMENT MARKER	EACH	132	132	
* 78200005	GUARDRAIL REFLECTORS, TYPE A	EACH	8	8	
78300200	RAISED REFLECTIVE PAVEMENT MARKER REMOVAL	EACH	132	132	
Z0033700	LONGITUDINAL JOINT SEALANT	FOOT	10448	10448	
∅ Z0076600	TRAINEES	hour	500	500	
Z0034105	MATERIAL TRANSFER DEVICE	TON	2461	2461	
∅ Z0076604	TRAINEES TRAINING PROGRAM GRADUATE	hour	500	500	
Z0049799	PROTECTING OR RESETTING SURVEY MARKERS	EACH	3	3	

* SPECIALTY ITEM

∅ 0042

REV. - MS

USER NAME = slfercca	DESIGNED -	REVISED -	STATE OF ILLINOIS DEPARTMENT OF TRANSPORTATION	FAP 322 (US 51) SUMMARY OF QUANTITIES				F.A.P. RTE. 322	SECTION (19)RS-7	COUNTY CHRISTIAN	TOTAL SHEETS 23	SHEET NO. 5
PLOT SCALE = 40,0000 * / in.	DRAWN -	REVISED -		SCALE: NONE	SHEET 3	OF 3	SHEETS	STA. N/A	TO STA. N/A	ILLINOIS FED. AID PROJECT		
PLOT DATE = 3/22/2021	CHECKED -	REVISED -										
	DATE -	REVISED -										

MILLING

LOCATION		LENGTH	WIDTH	AREA	44000155 HMA SURFACE REMOVAL, 1 1/2"	44000160 HMA SURFACE REMOVAL, 2 3/4"	
STATION TO STATION		FT	FT	SQ YD	SQ YD	SQ YD	
STA. 1405+81.00	TO STA. 1433+00.00	2,719.00	25.00	7,552.78	7,552.78		
STA. 1433+00.00	TO STA. 1461+00.00	2,800.00	25.00	7,777.78	7,777.78		
STA. 1461+00.00	TO STA. 1461+35.00	35.00	25.00	97.22	97.22		
STA. 1461+35.00	TO STA. 1463+95.64	260.64	22.00	637.12	637.12		
STA. 1464+54.70	TO STA. 1466+87.00	232.30	22.00	567.84	567.84		
STA. 1466+87.00	TO STA. 1485+96.00 BK	1,909.00	25.00	5,302.78	5,302.78		
STA. 1486+00.00 AH	TO STA. 1489+04.00	304.00	25.00	844.44	844.44		
STA. 1489+04.00	TO STA. 1508+63.98	1,959.98	25.00	5,444.39	5,444.39		
STA. LT 1508+63.98	TO STA. 1508+76.40	12.42	12.50	17.25		17.25	
STA. LT 1508+76.40	TO STA. 1511+45.78	269.38	11.00	329.24		329.24	
STA. RT 1508+63.98	TO STA. 1511+45.78	281.80	11.00	344.42		344.42	
SIDE ROADS							
TR 00N							
EAST STA. 1406+45.77	TO STA. 1407+05.56			52.78	52.78		
WEST STA. 1406+52.85	TO STA. 1407+10.21			52.78	52.78		
TR 100N							
EAST STA. 1459+11.02	TO STA. 1460+27.00			126.00	126.00		
WEST STA. 1459+55.34	TO STA. 1460+56.09			102.67	102.67		
SHOULDERS							
STA. LT 1508+76.40	TO STA. 1511+45.78	269.38	8.00	239.45		239.45	
STA. RT 1508+63.98	TO STA. 1511+45.78	281.80	8.00	250.49		250.49	
TOTAL :							28,559.00
							1,181.00

Z0033700 - LONGITUDINAL JOINT SEALANT

STATION TO STATION	LOCATION	LENGTH FT
STA. 1405+81.00 TO STA. 1433+00.00	C.L.	2,719.00
STA. 1433+00.00 TO STA. 1461+00.00	C.L.	2,800.00
STA. 1461+00.00 TO STA. 1463+66.31	C.L.	266.31
STA. 1464+83.94 TO STA. 1489+04.00	C.L.	2,420.06
STA. 1489+04.00 TO STA. 1511+45.78	C.L.	2,241.78
TOTAL :		10,448.00

40600990 - TEMPORARY RAMP

LOCATION	LENGTH	WIDTH	AREA
STATION TO STATION - LT/RT	FT	FT	SQ YD
MAINLINE			
STA. 1405+81.00	5.0	25.0	13.9
STA. 1511+45.78	9.2	22.0	22.4
SHOULDERS			
STA. 1463+66.31 LT	5.0	4.0	2.2
STA. 1463+66.31 RT	5.0	4.0	2.2
STA. 1464+83.94 LT	5.0	4.0	2.2
STA. 1464+84.94 RT	5.0	4.0	2.2
STA. 1511+45.78 LT	9.2	8.0	8.2
STA. 1544+45.78 RT	9.2	8.0	8.2
TOTAL :			62.0
FROM ENTRANCE SCHEDULE TOTAL :			89.0
PROJECT TOTAL :			151.0

GUARDRAIL REMOVAL

LOCATION		63100310 GUARDRAIL REMOVAL
STATION TO STATION		FOOT
STA. LT 1462+63.20	TO STA. 1463+98.30	135.10
STA. RT 1462+25.80	TO STA. 1463+98.20	172.40
STA. LT 1464+54.90	TO STA. 1466+06.60	151.70
STA. RT 1464+54.80	TO STA. 1465+87.30	132.50
TOTAL :		592.00

**STATE OF ILLINOIS
DEPARTMENT OF TRANSPORTATION**

**FAP 322 (US 51)
SCHEDULE OF QUANTITIES**

F.A.P. RTE. 322	SECTION (19)RS-7	COUNTY CHRISTIAN	TOTAL SHEETS 23	SHEET NO. 6
CONTRACT NO. 72L80			ILLINOIS FED. AID PROJECT	

SCALE: NONE SHEET 1 OF 7 SHEETS STA. N/A TO STA. N/A

MODEL: Default
 FILE NAME: p:\mhammond.dwt\illinois.gov\pwwdot\Documents\DOT_Offices\District 8\Projects\DE72L80\CADD\data\CAD\Projects\DE72L80\rs-7-sched.lc.dgn

SHOULDER IMPROVEMENTS

MILLED HMA OR PCC (TACK COAT) RATE - 0.05 POUNDS/SF						40600290 BITUMINOUS MATERIALS (TACK COAT)	44000155 HMA SURFACE REMOVAL 1 1/2"	44000160 HMA SURFACE REMOVAL 2 3/4"	48102100 AGGREGATE WEDGE SHLD, TY B	48203018 HMA SHOULDERS 5 1/4"	48203100 HMA SHOULDERS	20200100 EARTH EXCAVATION 8"		
AGGREGATE BASE COURSE (PRIME COAT) RATE - 0.25 POUNDS/SF														
FACE / BINDER / SHOULDER (112 LBS) RATE - 0.056 T/SY*IN														
AGGREGATE (SURFACE, BASE, SUBBASE) RATE - 1.6 T/CY														
SHOULDER THICKNESS (IN) - 2.75 TYPICAL														
LOCATION			LENGTH FT	WIDTH HMA FT	AGG.		AREA HMA SQ YD	POUND	SQ YD	SQ YD	TON	SQ YD	TON	CU YD
STATION TO STATION					WIDTH FT	DEPTH IN								
STA. 1461+35.00	TO STA. 1463+66.31	LT	231.31	4.0	3.0	1.25" TO 0"	102.80	46.26	102.80		2.14		15.83	
STA. 1461+35.00	TO STA. 1463+66.31	RT	215.36	4.0	3.0	1.25" TO 0"	95.72	43.07	95.72		1.99		14.74	
STA. 1464+83.94	TO STA. 1466+87.00	LT	203.06	4.0	3.0	1.25" TO 0"	90.25	40.61	90.25		1.88		13.90	
STA. 1464+83.94	TO STA. 1466+87.00	RT	187.80	4.0	3.0	1.25" TO 0"	83.47	37.56	83.47		1.74		12.85	
STA. 1505+38.98	TO STA. 1508+63.98	RT	325.00	8.0			345.11	155.30	345.11		101.46		53.15	76.69
STA. 1508+63.98	TO STA. 1511+45.78	RT	281.80	8.0		1.25" TO 0"	250.49	112.72		250.49			38.58	
STA. 1508+76.40	TO STA. 1511+45.78	LT	269.38	8.0		1.25" TO 0"	239.45	107.75		239.45			36.88	
STA. 1405+81.00	TO STA. 1406+52.85	LT	71.85		3.0	1.25" TO 0"					0.67			
STA. 1417+04.63	TO STA. 1417+88.50	LT	83.87		3.0	1.25" TO 0"					0.78			
STA. 1418+35.28	TO STA. 1429+07.23	LT	1,071.95		3.0	1.25" TO 0"					9.93			
STA. 1429+53.51	TO STA. 1433+00.00	LT	346.49		3.0	1.25" TO 0"					3.21			
STA. 1405+81.00	TO STA. 1406+49.74	RT	68.74		3.0	1.25" TO 0"					0.64			
STA. 1407+01.29	TO STA. 1419+03.05	RT	1,201.76		3.0	1.25" TO 0"					11.13			
STA. 1419+63.76	TO STA. 1429+23.26	RT	959.50		3.0	1.25" TO 0"					8.88			
STA. 1429+58.74	TO STA. 1433+00.00	RT	341.26		3.0	1.25" TO 0"					3.16			
STA. 1433+00.00	TO STA. 1436+87.06	LT	387.06		3.0	1.25" TO 0"					3.58			
STA. 1437+31.07	TO STA. 1440+58.56	LT	327.49		3.0	1.25" TO 0"					3.03			
STA. 1441+21.80	TO STA. 1446+46.34	LT	524.54		3.0	1.25" TO 0"					4.86			
STA. 1446+87.52	TO STA. 1459+59.02	LT	1,271.50		3.0	1.25" TO 0"					11.77			
STA. 1460+50.59	TO STA. 1461+00.00	LT	49.41		3.0	1.25" TO 0"					0.46			
STA. 1433+00.00	TO STA. 1436+92.15	RT	392.15		3.0	1.25" TO 0"					3.63			
STA. 1437+27.21	TO STA. 1452+77.27	RT	1,550.06		3.0	1.25" TO 0"					14.35			
STA. 1453+22.07	TO STA. 1459+14.28	RT	592.21		3.0	1.25" TO 0"					5.48			
STA. 1460+24.04	TO STA. 1461+00.00	RT	75.96		3.0	1.25" TO 0"					0.70			
STA. 1461+00.00	TO STA. 1463+66.47	LT	266.47		3.0	1.25" TO 0"					2.47			
STA. 1461+00.00	TO STA. 1461+46.83	RT	46.83		3.0	1.25" TO 0"					0.43			
STA. 1461+89.22	TO STA. 1463+66.47	RT	177.25		3.0	1.25" TO 0"					1.64			
STA. 1464+84.09	TO STA. 1471+05.64	LT	621.55		3.0	1.25" TO 0"					5.76			
STA. 1471+42.04	TO STA. 1472+52.71	LT	110.67		3.0	1.25" TO 0"					1.02			
STA. 1472+91.96	TO STA. 1475+70.96	LT	279.00		3.0	1.25" TO 0"					2.58			
STA. 1475+99.44	TO STA. 1477+87.35	LT	187.91		3.0	1.25" TO 0"					1.74			
STA. 1478+81.59	TO STA. 1484+02.24	LT	520.65		3.0	1.25" TO 0"					4.82			
STA. 1484+32.61	TO STA. 1485+26.08	LT	93.47		3.0	1.25" TO 0"					0.87			
STA. 1485+50.17	TO STA. 1485+96.00	BK LT	45.83		3.0	1.25" TO 0"					0.42			
STA. 1486+00.00	AH TO STA. 1486+16.97	LT	16.97		3.0	1.25" TO 0"					0.16			
STA. 1486+42.22	TO STA. 1488+30.12	LT	187.90		3.0	1.25" TO 0"					1.74			
STA. 1488+76.51	TO STA. 1489+04.00	LT	27.49		3.0	1.25" TO 0"					0.25			
STA. 1464+83.95	TO STA. 1471+81.79	RT	697.84		3.0	1.25" TO 0"					6.46			
STA. 1472+19.74	TO STA. 1475+71.65	RT	351.91		3.0	1.25" TO 0"					3.26			

MODEL: Default
 FILE NAME: p:\mhammon.dwg
 PROJECT: 0672180\CADD\DATA\CADD\PROJECTS\0672180-RT-shoulder.im
 OFFICE: DISTRICT 8 PROJECTS

USER NAME = sliferca	DESIGNED -	REVISED -
	DRAWN -	REVISED -
PLOT SCALE = 40,0000 */ in.	CHECKED -	REVISED -
PLOT DATE = 3/22/2021	DATE -	REVISED -

**STATE OF ILLINOIS
DEPARTMENT OF TRANSPORTATION**

FAP 322 (US 51) SCHEDULE OF QUANTITIES			
SCALE: NONE	SHEET 5	OF 7 SHEETS	STA. N/A TO STA. N/A

F.A.P. RTE. 322	SECTION (19)RS-7	COUNTY CHRISTIAN	TOTAL SHEETS 23	SHEET NO. 10
ILLINOIS FED. AID PROJECT			CONTRACT NO. 72L80	

SHOULDER IMPROVEMENTS

MILLED HMA OR PCC (TACK COAT) RATE - 0.05 POUNDS/SF		40600290 BITUMINOUS MATERIALS (TACK COAT)		44000155 HMA SURFACE REMOVAL 1 1/2"		44000160 IIMA SURFACE REMOVAL 2 3/4"		48102100 AGGREGATE WEDGE SHLD, TY B		48203018 HMA SHOULDERS 5 1/4"		48203100 IIMA SHOULDERS		20200100 EARTH EXCAVATION 8"	
AGGREGATE BASE COURSE (PRIME COAT) RATE - 0.25 POUNDS/SF		FACE / BINDER / SHOULDER (112 LBS) RATE - 0.056 T/SY*IN		AGGREGATE (SURFACE, BASE, SUBBASE) RATE - 1.6 T/CY		SHOULDER THICKNESS (IN) - 2.75 TYPICAL									
LOCATION			LENGTH FT	WIDTH HMA FT	AGG.		AREA HMA SQ YD	POUND	SQ YD	SQ YD	TON	SQ YD	TON	CU YD	
STATION TO STATION					WIDTH FT	DEPTH IN									
STA. 1476+09.47	TO STA. 1477+26.78	RT	117.31		3.0	1.25" TO 0"					1.09				
STA. 1477+60.51	TO STA. 1478+59.59	RT	99.08		3.0	1.25" TO 0"					0.92				
STA. 1479+02.09	TO STA. 1480+72.79	RT	170.70		3.0	1.25" TO 0"					1.58				
STA. 1481+06.49	TO STA. 1485+96.00	RK RT	489.51		3.0	1.25" TO 0"					4.53				
STA. 1486+00.00	AH TO STA. 1486+12.45	RT	12.45		3.0	1.25" TO 0"					0.12				
STA. 1486+86.72	TO STA. 1488+39.73	RT	153.01		3.0	1.25" TO 0"					1.42				
STA. 1488+91.48	TO STA. 1489+04.00	RT	12.52		3.0	1.25" TO 0"					0.12				
STA. 1489+04.00	TO STA. 1491+01.60	LT	197.60		3.0	1.25" TO 0"					1.83				
STA. 1491+55.89	TO STA. 1494+15.58	LT	259.69		3.0	1.25" TO 0"					2.40				
STA. 1494+44.15	TO STA. 1494+92.33	LT	48.18		3.0	1.25" TO 0"					0.45				
STA. 1495+22.15	TO STA. 1497+36.90	LT	214.75		3.0	1.25" TO 0"					1.99				
STA. 1497+69.71	TO STA. 1500+03.49	LT	233.78		3.0	1.25" TO 0"					2.16				
STA. 1500+43.19	TO STA. 1504+53.96	LT	410.77		3.0	1.25" TO 0"					3.80				
STA. 1505+99.34	TO STA. 1506+64.51	LT	65.17		3.0	1.25" TO 0"					0.60				
STA. 1507+34.76	TO STA. 1508+76.42	LT	141.66		3.0	1.25" TO 0"					1.31				
STA. 1489+04.00	TO STA. 1492+25.83	RT	321.83		3.0	1.25" TO 0"					2.98				
STA. 1492+74.26	TO STA. 1493+87.57	RT	113.31		3.0	1.25" TO 0"					1.05				
STA. 1494+31.77	TO STA. 1494+94.58	RT	62.81		3.0	1.25" TO 0"					0.58				
STA. 1495+25.40	TO STA. 1495+78.41	RT	53.01		3.0	1.25" TO 0"					0.49				
STA. 1496+11.65	TO STA. 1497+01.74	RT	90.09		3.0	1.25" TO 0"					0.83				
STA. 1497+32.32	TO STA. 1498+21.17	RT	88.85		3.0	1.25" TO 0"					0.82				
STA. 1498+43.79	TO STA. 1503+19.50	RT	475.71		3.0	1.25" TO 0"					4.40				
STA. 1503+80.67	TO STA. 1506+21.73	RT	241.06		3.0	1.25" TO 0"					2.23				
STA. 1506+64.28	TO STA. 1507+45.34	RT	81.06		3.0	1.25" TO 0"					0.75				
STA. 1507+81.26	TO STA. 1507+95.26	RT	14.00		3.0	1.25" TO 0"					0.13				
TOTAL :								544.00	718.00	490.00	167.00	102.00	186.00	77.00	

MODEL: Default
 FILE NAME: p:\pub\mroom.dwg
 ILLINOIS.gov\PIWDOT\Documents\DOT_Offices\District 8\Projects\0672180\SH-RT-shoulder.im

USER NAME = slieferca	DESIGNED -	REVISED -
	DRAWN -	REVISED -
PLOT SCALE = 40,0000 */ in.	CHECKED -	REVISED -
PLOT DATE = 3/22/2021	DATE -	REVISED -

**STATE OF ILLINOIS
DEPARTMENT OF TRANSPORTATION**

**FAP 322 (US 51)
SCHEDULE OF QUANTITIES**

SCALE: NONE SHEET 6 OF 7 SHEETS STA. N/A TO STA. N/A

F.A.P. RTE.	SECTION	COUNTY	TOTAL SHEETS	SHEET NO.
322	(19)RS-7	CHRISTIAN	23	11
CONTRACT NO. 72L80				
ILLINOIS FED. AID PROJECT				

70300100 - SHORT TERM PAVEMENT MARKING

LOCATION					LENGTH FT	TYPE (4")		
STATION TO STATION						YELLOW FT	WHITE FT	
STA.	1405+81.00	TO	STA.	1433+00.00	CENTERLINE	2,719.00	271.90	
STA.	1433+00.00	TO	STA.	1461+00.00	CENTERLINE	2,800.00	280.00	
STA.	1461+00.00	TO	STA.	1485+96.00	BK CENTERLINE	2,496.00	249.60	
STA.	1486+00.00	AH TO	STA.	1489+04.00	CENTERLINE	304.00	30.40	
STA.	1489+04.00	TO	STA.	1511+45.78	CENTERLINE	2,241.78	224.18	
STA.	LT 1461+35.00	TO	STA.	1463+66.31	EDGE LINE	231.31		9.25
STA.	RT 1461+35.00	TO	STA.	1463+66.31	EDGE LINE	231.31		9.25
STA.	LT 1464+83.94	TO	STA.	1466+87.00	EDGE LINE	203.06		8.12
STA.	RT 1464+83.94	TO	STA.	1466+87.00	EDGE LINE	203.06		8.12
STA.	RT 1508+63.98	TO	STA.	1511+45.78	EDGE LINE	281.80		11.27
STA.	LT 1508+76.40	TO	STA.	1511+45.78	EDGE LINE	269.38		10.78
SUBTOTAL :						1,056.08	56.80	
(3 APPLICATIONS) :						3,168.23	170.39	
TOTAL :						3,339.00		

70300150 - SHORT TERM PAVEMENT MARKING REMOVAL

TYPE	SQ FT
ONE APPLICATION REMOVAL	371.00

PAVEMENT MARKERS

78100100 - RAISED REFLECTIVE PAVEMENT MARKER

78300200 - RAISED REFLECTIVE PAVEMENT MARKER REMOVAL

LOCATION					LENGTH FT	TWO-WAY AMBER EACH	
STATION TO STATION							
STA.	1405+81.00	TO	STA.	1433+00.00	2,719.00	34	
STA.	1433+00.00	TO	STA.	1461+00.00	2,800.00	35	
STA.	1461+00.00	TO	STA.	1485+96.00	BK	2,496.00	31
STA.	1486+00.00	AH	TO	STA.	1489+04.00	304.00	4
STA.	1489+04.00	TO	STA.	1511+45.78	2,241.78	28	
TOTAL :						132	

78009005 - MODIFIED URETHANE PAVEMENT MARKING - LINE 5"

STATION TO STATION					LENGTH FT	CENTERLINE (YELLOW)		
STATION TO STATION						SKIP-DASH FT	SOLID FT	
STA.	1405+81.00	TO	STA.	1417+45.00	LT	1,164.00	291.00	-
STA.	1417+45.00	TO	STA.	1429+00.00	LT	1,155.00	288.75	-
STA.	1417+45.00	TO	STA.	1429+00.00	RT	1,155.00		1,155.00
STA.	1429+00.00	TO	STA.	1441+15.00	LT	1,215.00		1,215.00
STA.	1429+00.00	TO	STA.	1443+75.00	RT	1,475.00	368.75	-
STA.	1441+15.00	TO	STA.	1453+31.00	LT	1,216.00	304.00	
STA.	1443+75.00	TO	STA.	1456+30.00	RT	1,255.00		1,255.00
STA.	1453+31.00	TO	STA.	1466+45.00	LT	1,314.00	-	1,314.00
STA.	1456+30.00	TO	STA.	1471+50.00	RT	1,520.00	380.00	
STA.	1466+45.00	TO	STA.	1477+20.00	LT	1,075.00	268.75	-
STA.	1471+50.00	TO	STA.	1479+00.00	RT	750.00		750.00
STA.	1479+00.00	TO	STA.	1485+96.00	BK RT	696.00	174.00	
STA.	1486+00.00	AH TO	STA.	1495+52.00	RT	952.00	238.00	
STA.	1477+20.00	TO	STA.	1485+96.00	BK LT	876.00	-	876.00
STA.	1486+00.00	AH TO	STA.	1487+69.00	LT	169.00	-	169.00
STA.	1487+69.00	TO	STA.	1495+52.00	LT	783.00	195.75	-
STA.	1495+52.00	TO	STA.	1502+00.00	RT	648.00	-	648.00
STA.	1495+52.00	TO	STA.	1511+45.78	LT	1,593.78		1,593.78
STA.	1502+00.00	TO	STA.	1511+45.78	RT	945.78	236.45	
SUB TOTAL :						2,745.45	8,975.78	
TOTAL :						11,722.00		

78009005 - MODIFIED URETHANE PAVEMENT MARKING - LINE 5"

STATION TO STATION					EDGE LINE (WHITE)	
STATION TO STATION					SOLID FT	
STA.	1405+81.00	TO	STA.	1406+52.85	LT	71.85
STA.	1405+81.00	TO	STA.	1406+45.77	RT	64.77
STA.	1407+10.21	TO	STA.	1459+55.34	LT	5,245.13
STA.	1407+05.56	TO	STA.	1459+11.02	RT	5,205.46
STA.	1460+56.09	TO	STA.	1485+96.00	BK	2,539.91
STA.	1486+00.00	AH TO	STA.	1511+45.78	LT	2,545.78
STA.	1460+27.00	TO	STA.	1485+96.00	BK	2,569.00
STA.	1486+00.00	AH TO	STA.	1511+45.78	RT	2,545.78
TOTAL :						20,788.00

78009005 - MODIFIED URETHANE PAVEMENT MARKING - LINE 5"

CENTERLINE	11,722.00
EDGE LINE	20,788.00
TOTAL :	32,510.00

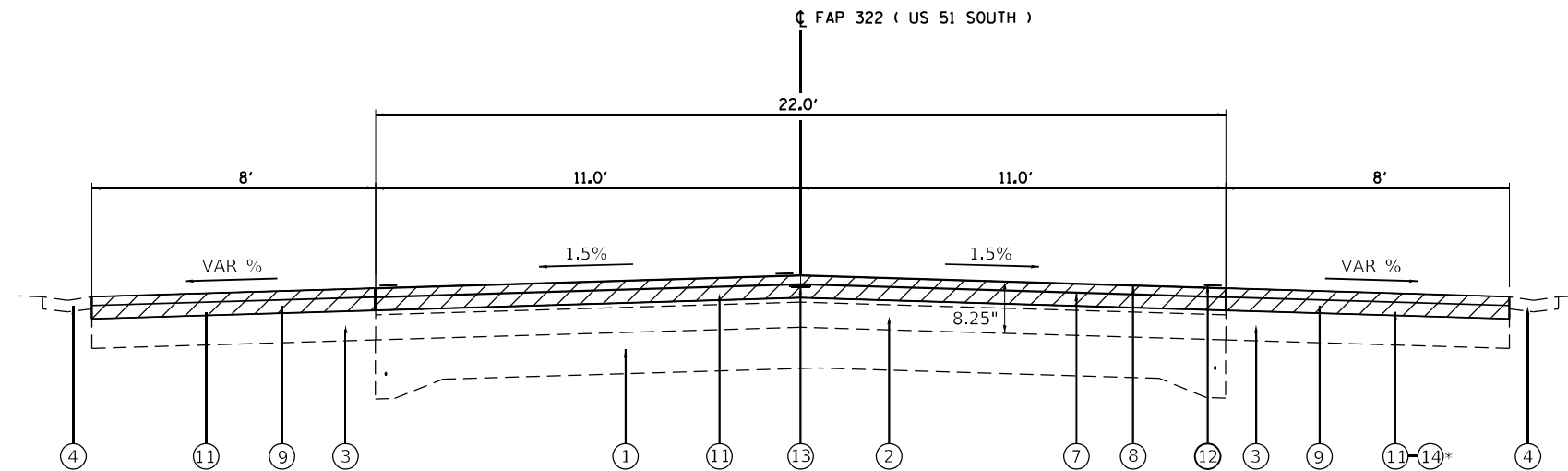
MODEL: Default
FILE NAME: p:\mhammon.dwt\illinois.gov\PWIDOT\Documents\DOT_Office\District_8\Projects\DE72180\CADD\DATA\CAD\PROJECTS\DE72180\PH-CH-CH-ED-18.dgn

USER NAME = slifercca	DESIGNED -	REVISED -
	DRAWN -	REVISED -
PLOT SCALE = 40,0000 */ in.	CHECKED -	REVISED -
PLOT DATE = 3/22/2021	DATE -	REVISED -

**STATE OF ILLINOIS
DEPARTMENT OF TRANSPORTATION**

FAP 322 (US 51) SCHEDULE OF QUANTITIES			
SCALE: NONE	SHEET 7	OF 7 SHEETS	STA. N/A TO STA. N/A

F.A.P. RTE.	SECTION	COUNTY	TOTAL SHEETS	SHEET NO.
322	(19)RS-7	CHRISTIAN	23	12
CONTRACT NO. 72L80				
ILLINOIS FED. AID PROJECT				



TYPICAL SECTION

STA. 1508+63.98 RT TO STA. 1511+45.78 RT
 STA. 1508+76.40 LT TO STA. 1511+45.78 LT

*STA. 1505+37 RT TO 1508+00 RT

LEGEND

- ① EXISTING P.C.C. PAVEMENT 9"-6"-9"
- ② EXISTING BITUMINOUS OVERLAY
- ③ EXISTING BITUMINOUS SHOULDER, 8"
- ④ EXISTING GUTTER
- ⑤ EXISTING AGGREGATE SHOULDER, TYPE B
- ⑥ PROPOSED HOT-MIX ASPHALT SURFACE REMOVAL, (1½")
- ⑦ PROPOSED HOT-MIX ASPHALT BINDER COURSE IL 9.5FG N50, (1¼")
- ⑧ PROPOSED HOT-MIX ASPHALT SURFACE COURSE, IL 9.5, MIX "C" N50, (1½")
- ⑨ PROPOSED HOT-MIX ASPHALT SHOULDERS, (2¾")
- ⑩ PROPOSED AGGREGATE WEDGE SHOULDERS, TYPE B
- ⑪ PROPOSED HOT-MIX ASPHALT SURFACE REMOVAL, (2¾")
- ⑫ PROPOSED MODIFIED URETHANE PAVEMENT MARKING - LINE 5"
- ⑬ PROPOSED LONGITUDINAL JOINT SEALANT
- * ⑭ PROPOSED HOT-MIX ASPHALT SHOULDERS, (5¼")

MODEL: Default
 FILE NAME: p:\pub\mcrnono.dwg
 PROJECT: 1505+37 RT TO 1508+00 RT
 OFFICE: DISTRICT 6
 DATE: 3/22/2021

USER NAME = slfercca	DESIGNED -	REVISED -
	DRAWN -	REVISED -
PLOT SCALE = 100,0000 ' / in.	CHECKED -	REVISED -
PLOT DATE = 3/22/2021	DATE -	REVISED -

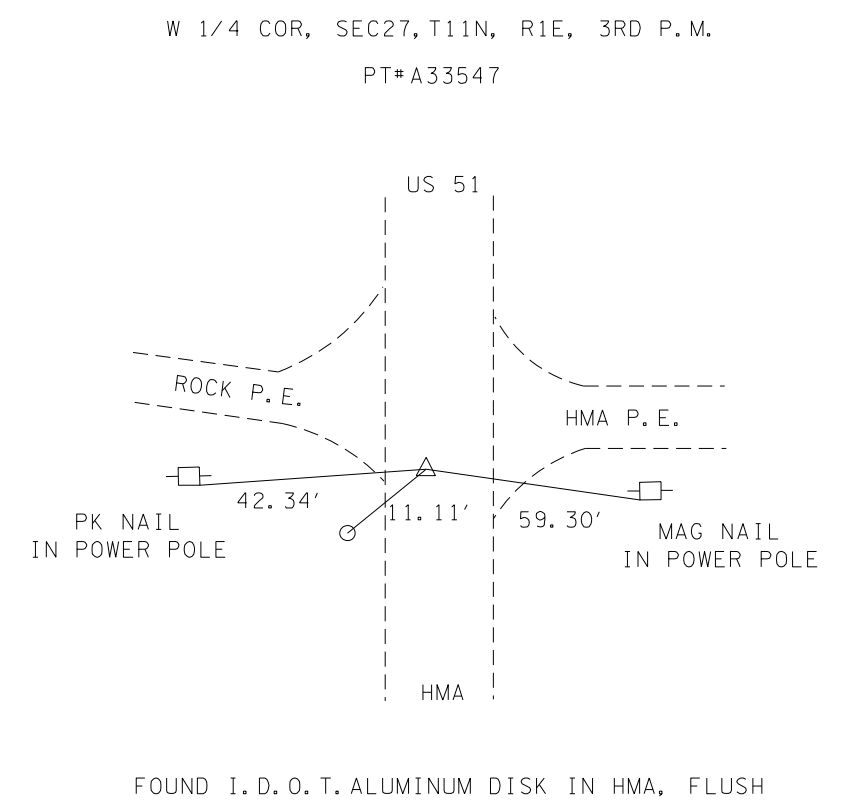
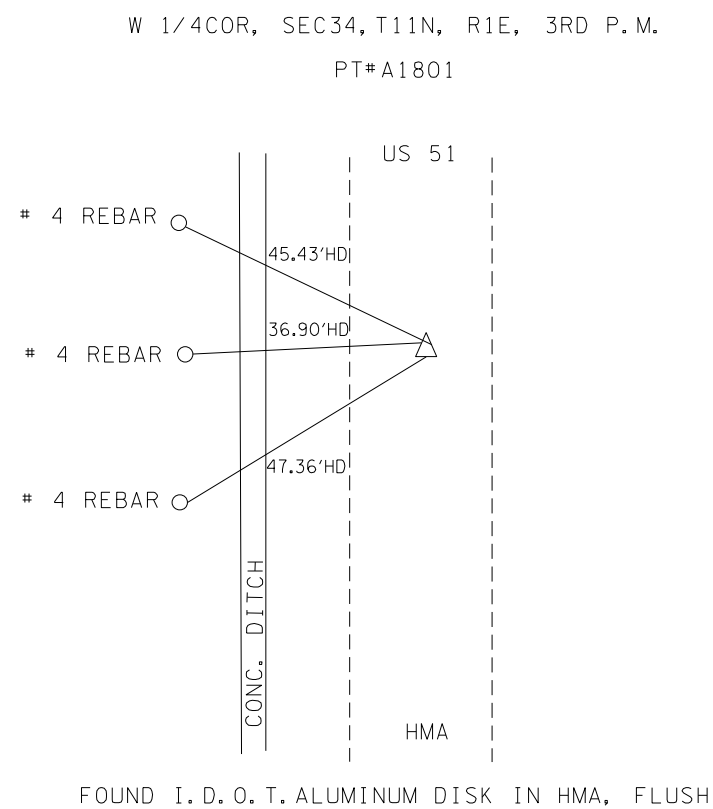
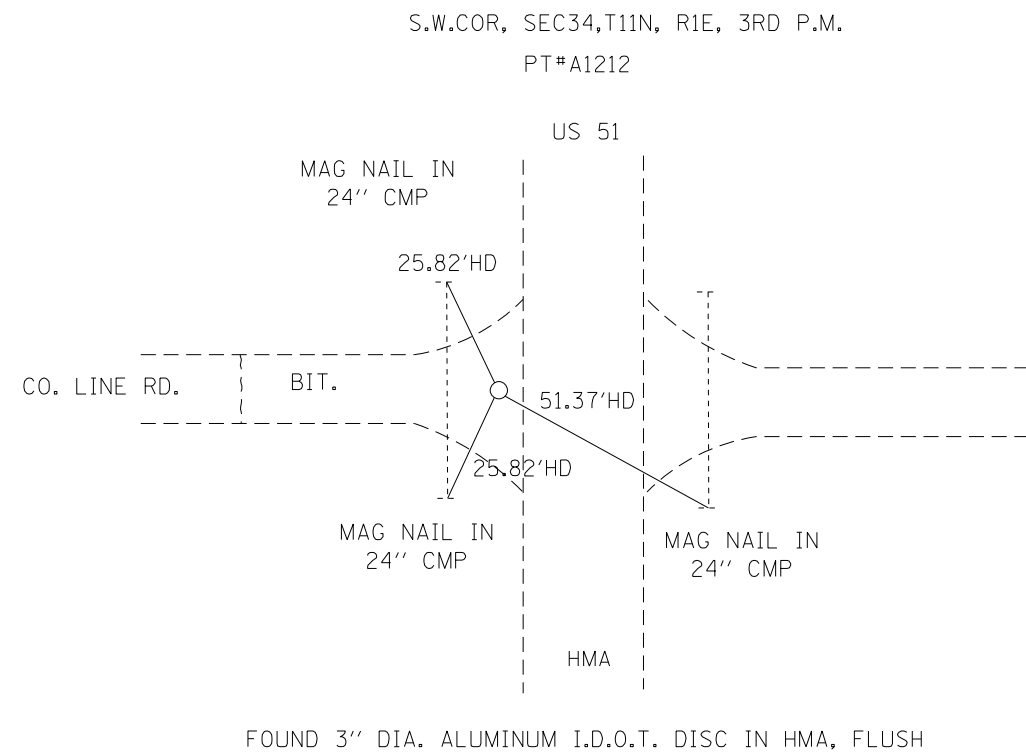
**STATE OF ILLINOIS
 DEPARTMENT OF TRANSPORTATION**

FAP 322 (US 51) TYPICAL SECTIONS	
SCALE: NONE	SHEET 3 OF 3 SHEETS
STA. N/A	TO STA. N/A

F.A.P. RTE. 322	SECTION (19)RS-7	COUNTY CHRISTIAN	TOTAL SHEETS 23	SHEET NO. 15
CONTRACT NO. 72L80			ILLINOIS FED. AID PROJECT	

PROTECTING AND RESETTING SURVEY MARKERS

D672L80 SECTION CORNERS NAD83/2011ADJ. COORDINATES						TYPE	Z0049799 QUANT (EACH)	
POINT#	STATION	OFFSET	NORTHING	EASTING	DESCRIPTION			
A33547	1486+11.72	8.75 LT	985769.349	2603305.912	W 1/4 COR, SEC27, T11N, R1E, 3RD P.M.	1	1	
A1801	1433+19.90	2.42 LT	980481.842	2603359.993	W 1/4COR, SEC34, T11N, R1E, 3RD P.M.	1	1	
A1212	1406+78.82	13.68 LT	977841.133	2603410.408	S.W.COR, SEC34, T11N, R1E, 3RD P.M.	1	1	
PROJECT TOTAL (3P)								3



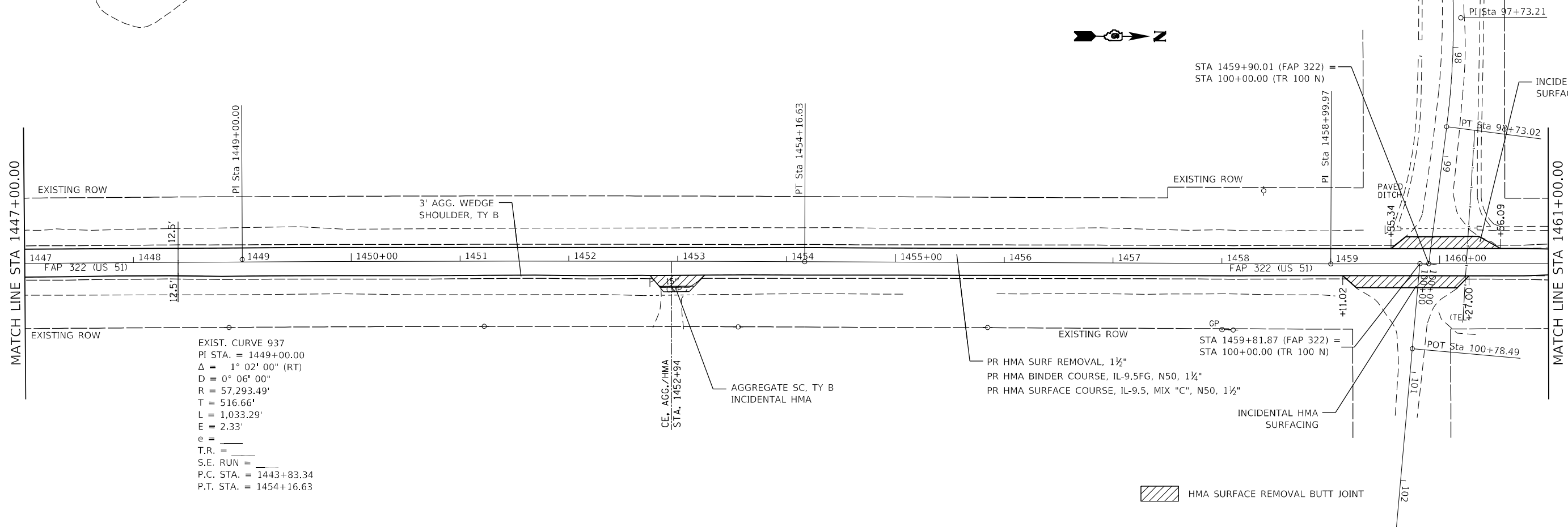
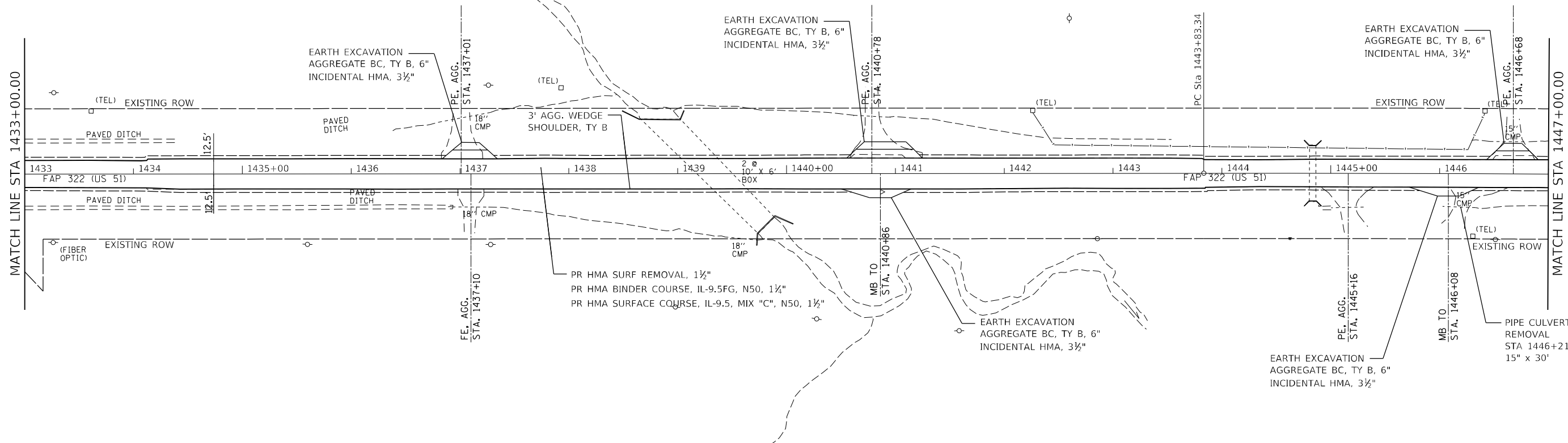
MODEL: Default
 FILE NAME: p:\data\mroom.dwg
 PROJECT: 2021-03-22-11:00:00
 USER: sleferca
 PLOT DATE: 3/22/2021

USER NAME = sleferca	DESIGNED -	REVISED -
PLOT SCALE = 100,0000' / in.	DRAWN -	REVISED -
PLOT DATE = 3/22/2021	CHECKED -	REVISED -
	DATE -	REVISED -

**STATE OF ILLINOIS
DEPARTMENT OF TRANSPORTATION**

FAP 322 (US 51) SURVEY MARKERS			
SCALE: NONE	SHEET 1	OF 1 SHEETS	STA. N/A TO STA. N/A

F.A.P. RTE. 322	SECTION (19)RS-7	COUNTY CHRISTIAN	TOTAL SHEETS 23	SHEET NO. 16
			CONTRACT NO. 72L80	
ILLINOIS FED. AID PROJECT				



EXIST. CURVE 937
 PI STA. = 1449+00.00
 $\Delta = 1^\circ 02' 00''$ (RT)
 $D = 0^\circ 06' 00''$
 $R = 57,293.49'$
 $T = 516.66'$
 $L = 1,033.29'$
 $E = 2.33'$
 $e =$
 $T.R. =$
 $S.E. RUN =$
 $P.C. STA. = 1443+83.34$
 $P.T. STA. = 1454+16.63$

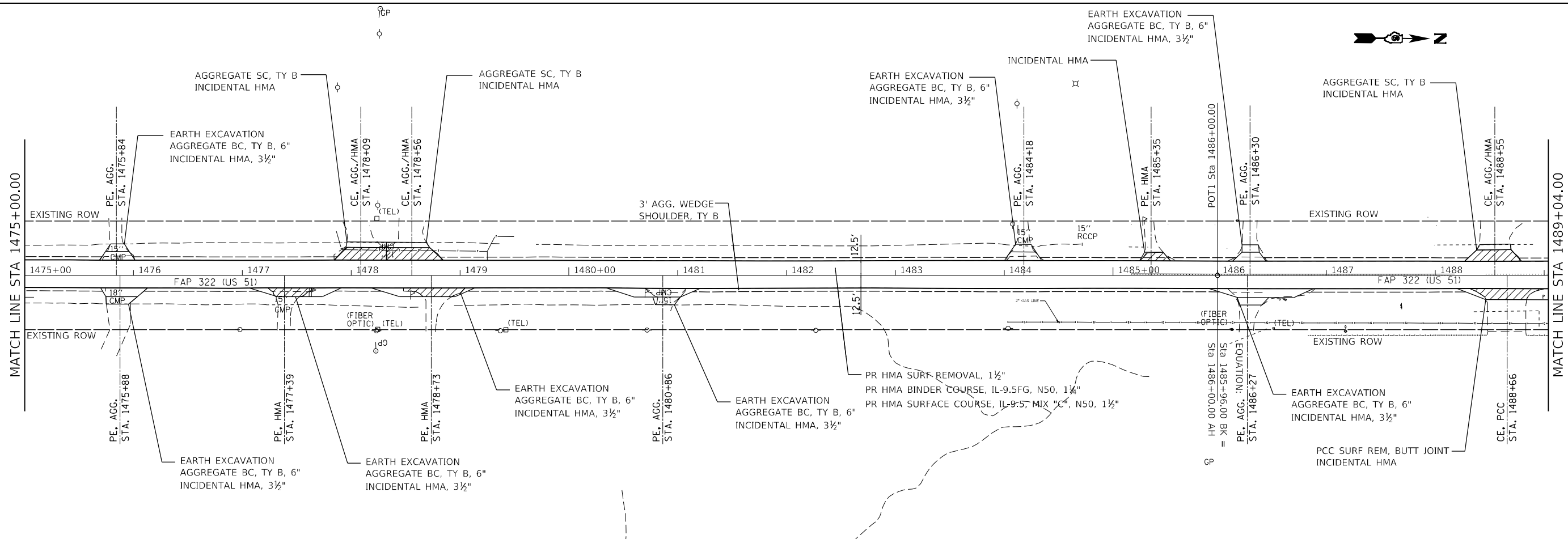
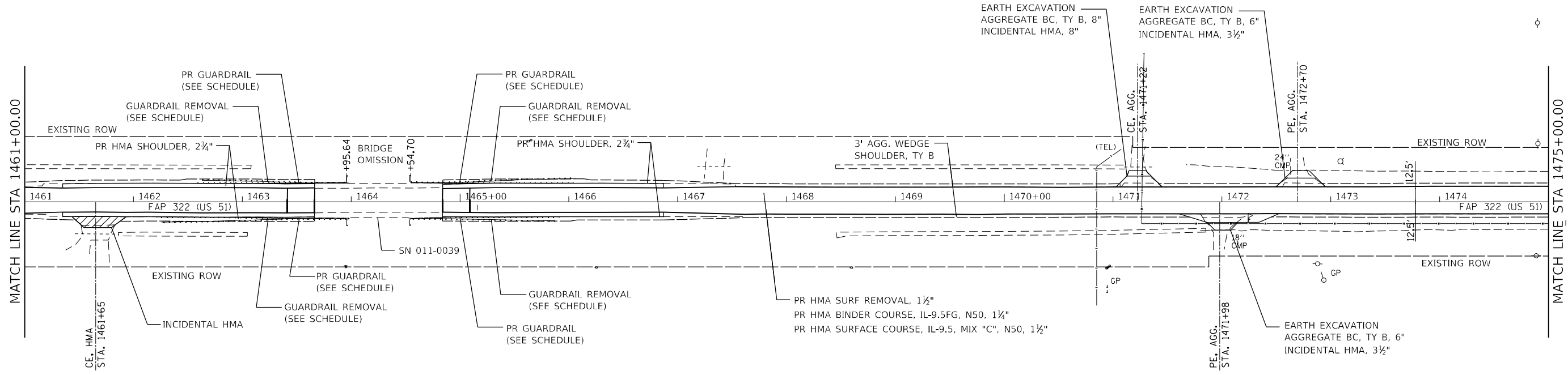
MODEL: Default
 FILE NAME: p:\data\m3000m.dwg
 PROJECT: I:\projects\2021\210301\210301.dwg
 OFFICE: DISTRICT 8
 DATE: 3/22/2021

USER NAME = slifercca	DESIGNED -	REVISED -
PLOT SCALE = 100,0000' / in.	DRAWN -	REVISED -
PLOT DATE = 3/22/2021	CHECKED -	REVISED -
	DATE -	REVISED -

**STATE OF ILLINOIS
 DEPARTMENT OF TRANSPORTATION**

FAP 322 (US 51) PLAN SHEET	
SCALE: 1" = 100'	SHEET 2 OF 4 SHEETS
STA. 1433+00.00 TO STA. 1461+00.00	

F.A.P. RTE. 322	SECTION (19) R5-7	COUNTY CHRISTIAN	TOTAL SHEETS 23	SHEET NO. 18
CONTRACT NO. 72L80				
ILLINOIS FED. AID PROJECT				



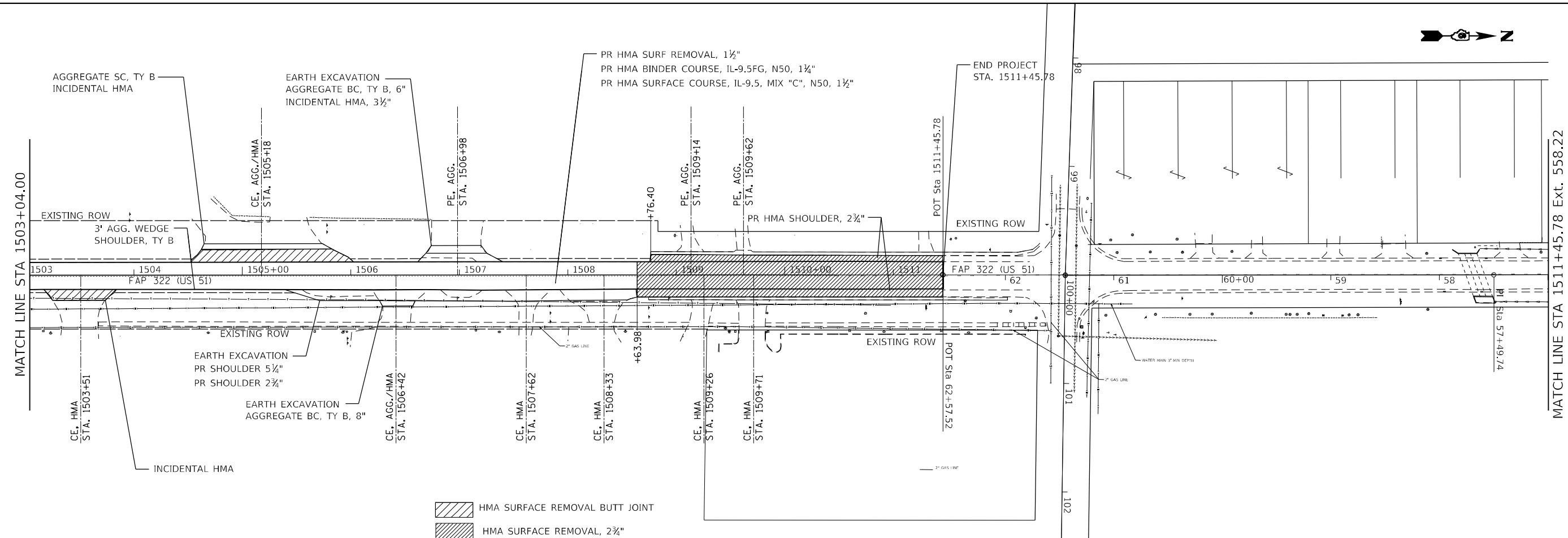
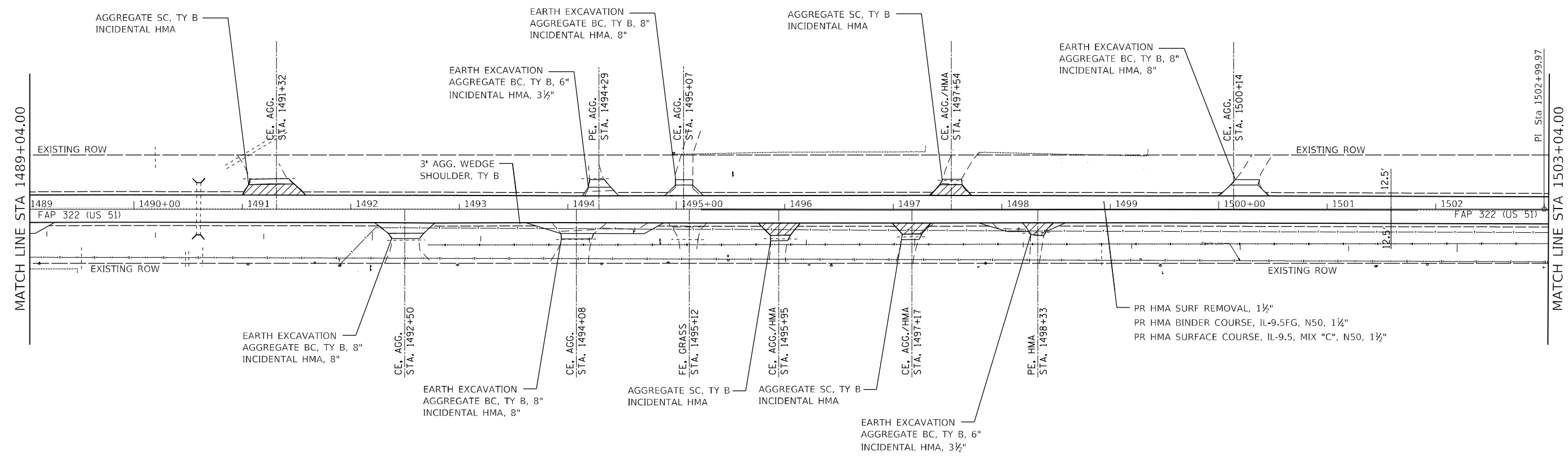
MODEL: Default
 FILE NAME: p:\projects\72L80\FAP322\Drawings\DOT\Office\Drawings\72L80\72L80-19-18.dwg
 PROJECT: 72L80-FAP322-Drawings\DOT\Office\Drawings\72L80\72L80-19-18.dwg

USER NAME = sliferca	DESIGNED -	REVISED -
DRAWN -	REVISED -	REVISED -
PLOT SCALE = 100,0000' / in.	CHECKED -	REVISED -
PLOT DATE = 3/22/2021	DATE -	REVISED -

STATE OF ILLINOIS
DEPARTMENT OF TRANSPORTATION

FAP 322 (US 51)	
PLAN SHEET	
SCALE: 1" = 100'	SHEET 3 OF 4 SHEETS
STA. 1461+00.00 TO STA. 1489+04.00	

F.A.P. RTE. 322	SECTION (19) R5-7	COUNTY CHRISTIAN	TOTAL SHEETS 23	SHEET NO. 19
CONTRACT NO. 72L80				
ILLINOIS FED. AID PROJECT				



MODEL: Default
 FILE NAME: p:\work\11000000.dwg
 PROJECT: 11000000.dwg
 USER: siefertca
 DATE: 3/22/2021

USER NAME = siefertca	DESIGNED -	REVISED -
PLOT SCALE = 100,0000' / in.	DRAWN -	REVISED -
PLOT DATE = 3/22/2021	CHECKED -	REVISED -
	DATE -	REVISED -

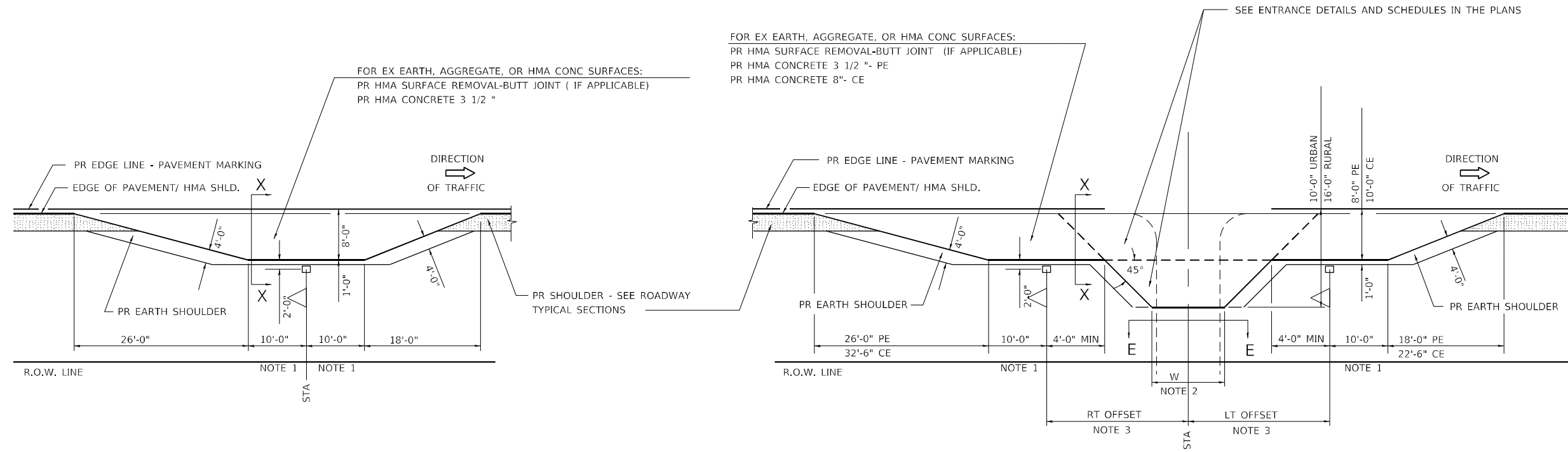
STATE OF ILLINOIS
DEPARTMENT OF TRANSPORTATION

SCALE: 1" = 100'		SHEET 4 OF 4 SHEETS		STA. 1489+04.00 TO STA. 1511+45.78	
------------------	--	---------------------	--	------------------------------------	--

FAP 322 (US 51)
PLAN SHEET

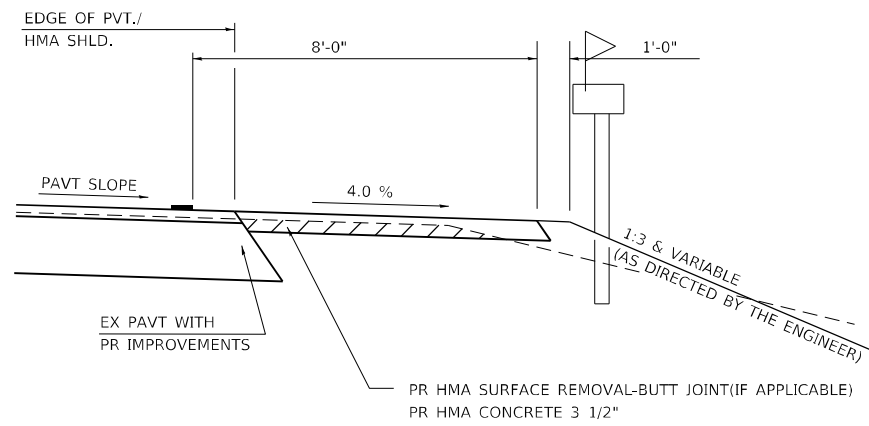
F.A.P. RTE. 322	SECTION (119) R5-7	COUNTY CHRISTIAN	TOTAL SHEETS 23	SHEET NO. 20
CONTRACT NO. 72L80				
ILLINOIS FED. AID PROJECT				

DETAILS OF MAILBOX TURNOUTS



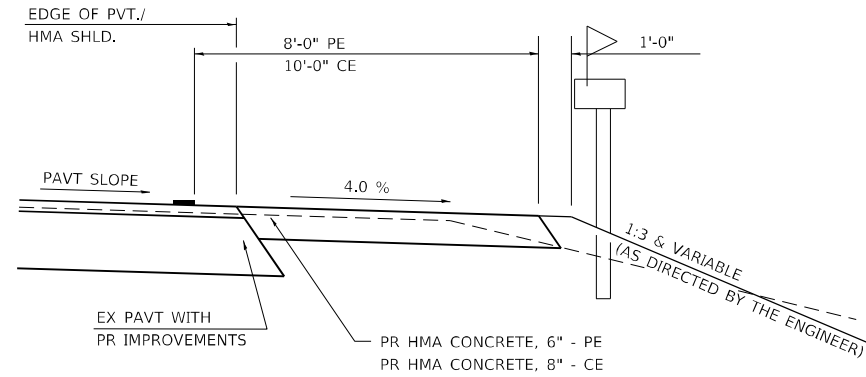
PLAN - MAILBOX TURNOUTS

PLAN - COMBINED MAILBOX TURNOUT WITH TRAILING OR LEADING ENTRANCE



SECTION X-X THRU MAILBOX TURNOUT
ALSO APPLIES TO MAILBOX TURNOUTS COMBINED WITH
EX EARTH, AGGREGATE, OR HMA PE & FE

(DETAIL APPLIES WHEN M.B. TURNOUT DOES NOT EXIST.
IF EXISTING, TREAT SAME AS ENTRANCE.)



SECTION X-X THRU MAILBOX TURNOUT
COMBINED WITH EX HMA CONC & PC CONC PE & CE

(DETAIL APPLIES WHEN M.B. TURNOUT DOES NOT EXIST.
IF EXISTING, TREAT SAME AS ENTRANCE.)

- NOTE 1 IF MORE THAN ONE MAILBOX IS PRESENT, DIMENSION FROM CENTER OF END MAILBOX.
- NOTE 2 FOR ENTRANCE LAYOUT DIMENSIONS AND SECTIONS A-A & E-E REFER TO THE SCHEDULES IN THE PLANS.
- NOTE 3 BOTH LT OR RT OFFSETS FOR MAILBOX SHOWN USE OFFSET DIMENSION PER SCHEDULE AND REFER TO LAYOUT SHOWN ON THE PLAN.

ALL DIMENSIONS ARE IN INCHES
UNLESS OTHERWISE SHOWN.

MODEL: Default
FILE NAME: p:\mworkroom\dot\illinois\gov\PIWDOT\Documents\DOT_Offices\District_8\Projects\DE72L80\CADD\Drawings\CD\Projects\DE72L80\PH-detail.dwg

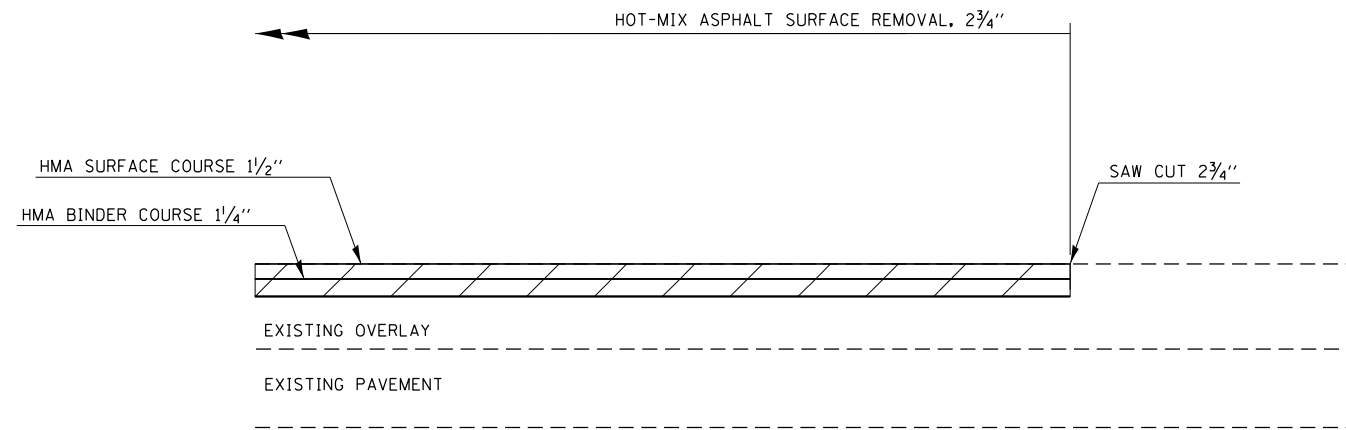
USER NAME = slieferca	DESIGNED -	REVISED -
PLOT SCALE = 40,0000 * / in.	DRAWN -	REVISED -
PLOT DATE = 3/22/2021	CHECKED -	REVISED -
	DATE -	REVISED -

STATE OF ILLINOIS
DEPARTMENT OF TRANSPORTATION

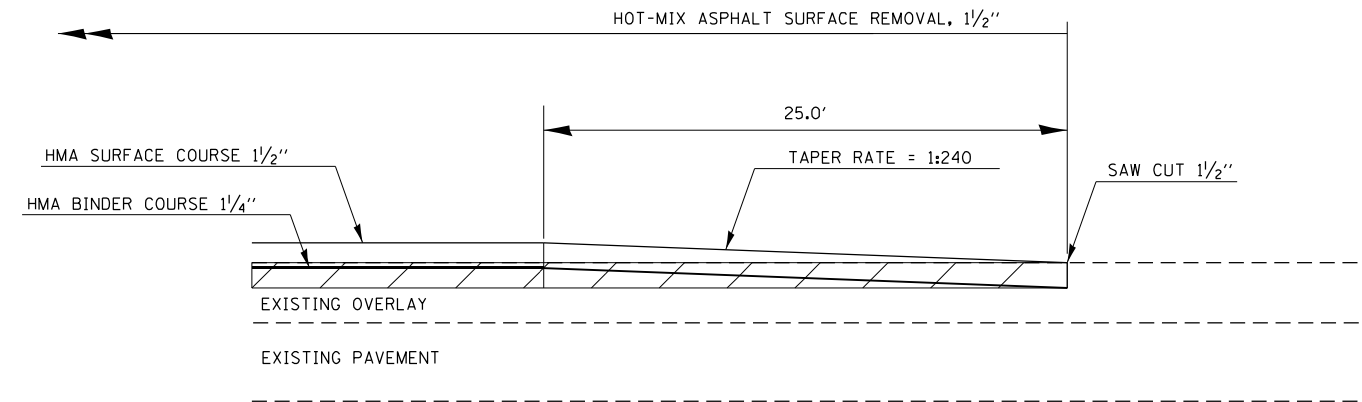
FAP 322 (US 51)
ENTRANCE DETAILS

SCALE: NONE SHEET 2 OF 2 SHEETS STA. N/A TO STA. N/A

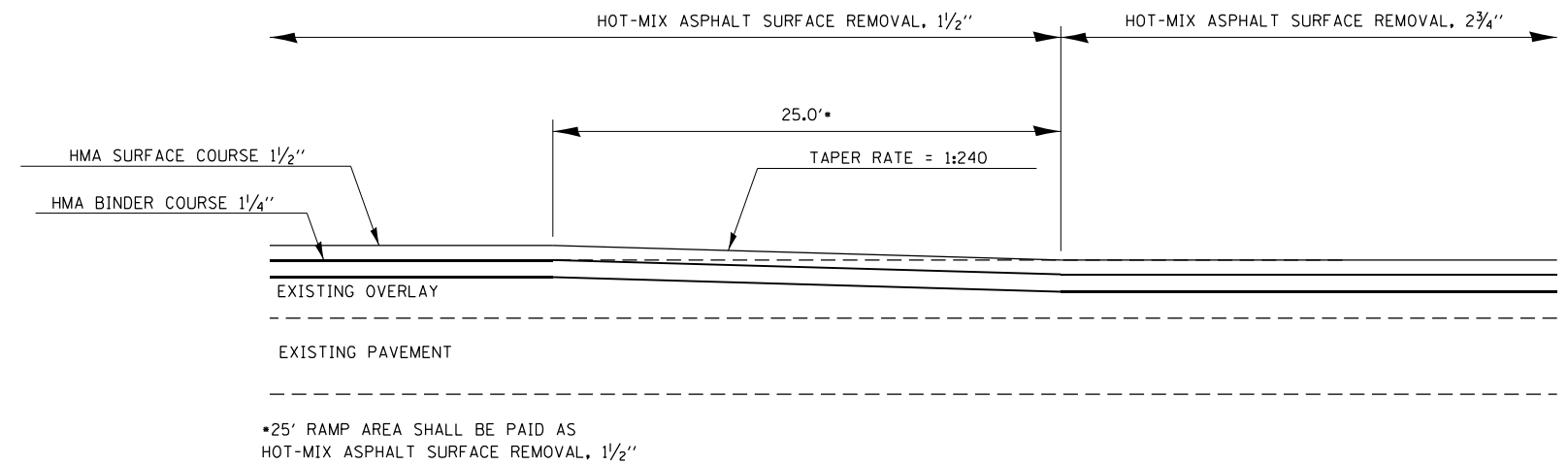
F.A.P. RTE.	SECTION	COUNTY	TOTAL SHEETS	SHEET NO.
322	(19)RS-7	CHRISTIAN	23	22
CONTRACT NO. 72L80				
ILLINOIS FED. AID PROJECT				



JOINT DETAIL
END OF PROJECT STA. 1511+45.78



JOINT DETAIL
STA. 1405+81.00 TO STA. 1406+06.00
STA. 1463+66.35 TO STA. 1463+41.35
STA. 1464+83.89 TO STA. 1465+08.89
STA. 1511+20.78 TO STA. 1511+45.78



•25' RAMP AREA SHALL BE PAID AS
HOT-MIX ASPHALT SURFACE REMOVAL, 1/2"

RAMP DETAIL
STA. 1508+38.98 TO STA. 1508+63.98

TEMPORARY RAMPS

APPLICATION	RATE	LENGTH
POST 1 1/2" HMA SURFACE REMOVAL	1:40	5.0'
POST 2 3/4" HMA SURFACE REMOVAL	1:40	9'-2"

MODEL: Default
FILE NAME: p:\pub\mroom.dwt\illinois.gov\PIWDOT\Documents\DOT_Offices\District_6\Projects\DE72L80\CADD\DATA\CAD\Projects\DE72L80\PH-detail.dwg

USER NAME = slfercca	DESIGNED -	REVISED -
	DRAWN -	REVISED -
PLOT SCALE = 40,0000 * / in.	CHECKED -	REVISED -
PLOT DATE = 3/22/2021	DATE -	REVISED -

**STATE OF ILLINOIS
DEPARTMENT OF TRANSPORTATION**

**FAP 322 (US51)
JOINT DETAILS AND TEMPORARY RAMP DETAILS**

SCALE: NONE SHEET 1 OF 1 SHEETS STA. N/A TO STA. N/A

F.A.P. RTE. 322	SECTION (19)RS-7	COUNTY CHRISTIAN	TOTAL SHEETS 23	SHEET NO. 23
CONTRACT NO. 72L80			ILLINOIS FED. AID PROJECT	