

STATE OF ILLINOIS  
DEPARTMENT OF TRANSPORTATION

F.A.P. RTE	SECTION	COUNTY	TOTAL SHEETS	SHEET NO.
774	D7 SAFETY SHLD 2020-1	VARIOUS	10	1
		ILLINOIS	CONTRACT NO. 74898	
SHELBY, FAYETTE & EFFINGHAM				

FOR INDEX OF SHEETS, SEE SHEET NO. 2

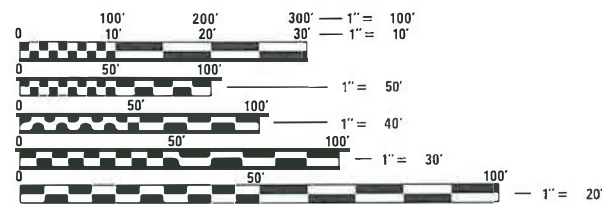
# PROPOSED HIGHWAY PLANS

FAP ROUTE 774  
D7 SAFETY SHLD 2020-1  
PROJECT HSIP-QWSE(601)  
SHOULDERS  
VARIOUS COUNTIES  
(SHELBY, FAYETTE, AND EFFINGHAM)

**STATION EQUATIONS:**

724 + 20.1 BK = 724 + 33.4 AH  
756 + 46.0 BK = 757 + 05.3 AH  
810 + 67.2 BK = 811 + 63.2 AH

AADT (2021): 2900

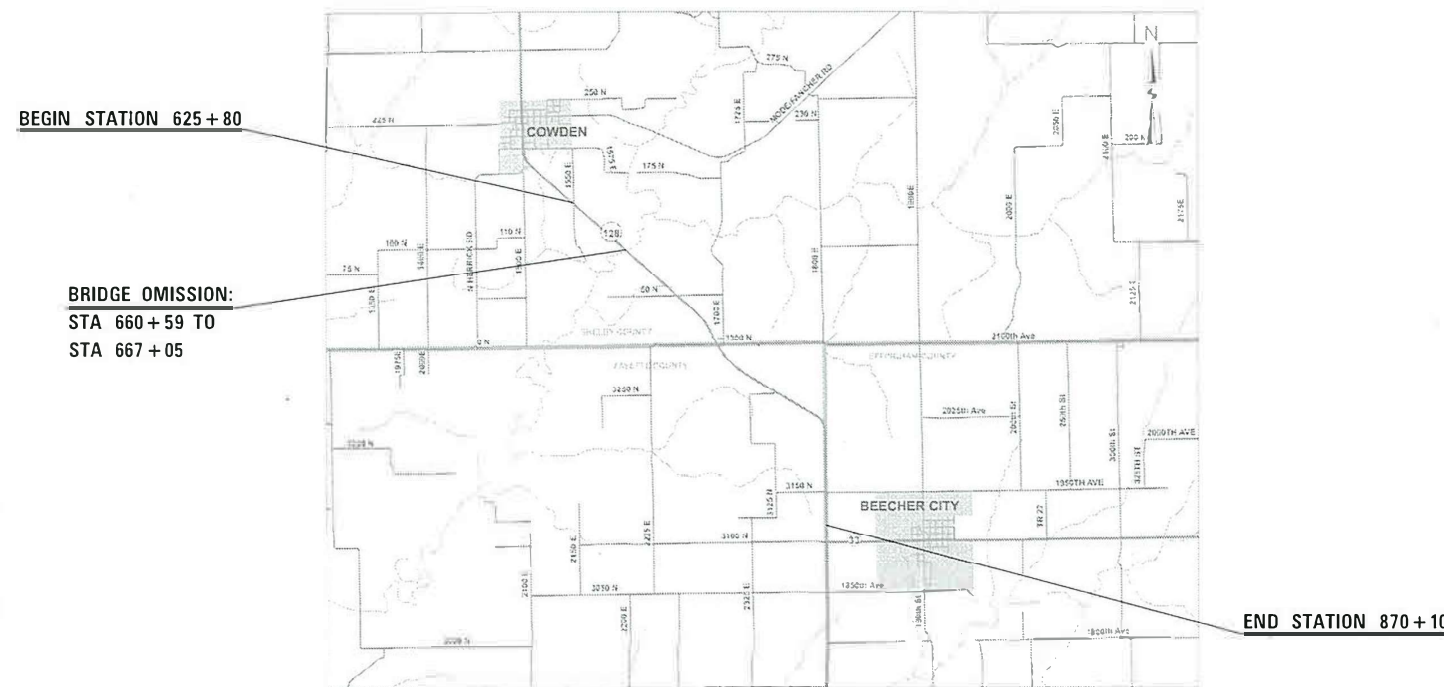


FULL SIZE PLANS HAVE BEEN PREPARED USING STANDARD ENGINEERING SCALES. REDUCED SIZED PLANS WILL NOT CONFORM TO STANDARD SCALES. IN MAKING MEASUREMENTS ON REDUCED PLANS, THE ABOVE SCALES MAY BE USED.

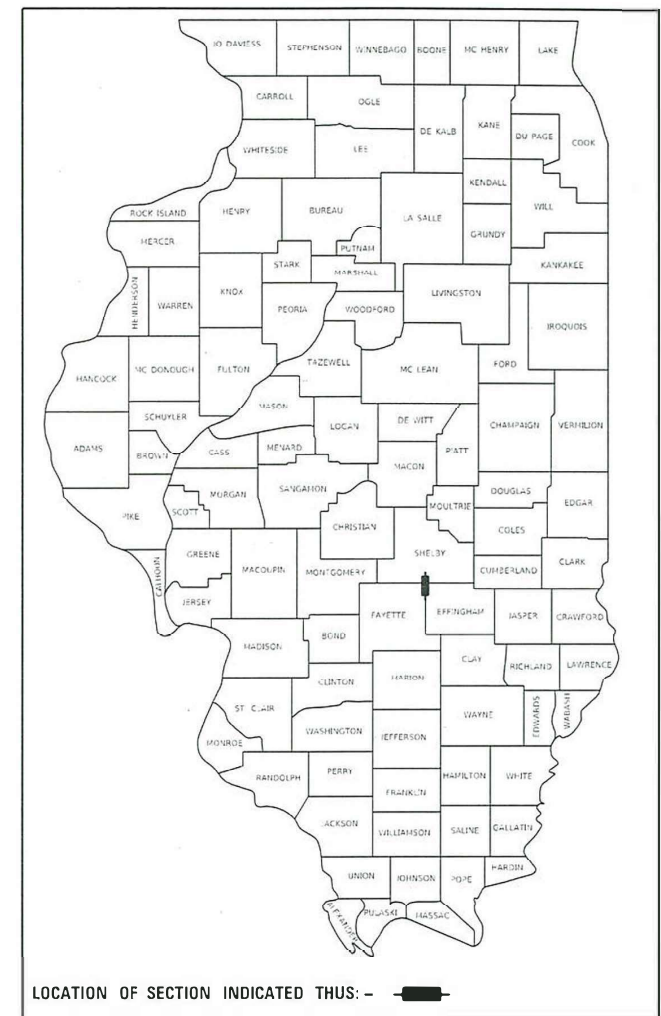
J.U.L.I.E.  
JOINT UTILITY LOCATION INFORMATION FOR EXCAVATORS  
1-800-892-0123  
OR 811

PROJECT ENGINEER: DEBRA G. BARRETT  
PROJECT MANAGER: LEVI LUND  
PHONE NO.: (217) 342-8243  
CONTRACT NO. 74898

C-97-027-19



D-97-015-19



LOCATION OF SECTION INDICATED THUS: - [black rectangle] -

STATE OF ILLINOIS  
DEPARTMENT OF TRANSPORTATION

SUBMITTED March 23, 2021  
Jeffrey P. Mynick  
REGIONAL ENGINEER

May 7, 2021  
Scott A. Etkin  
ENGINEER OF DESIGN AND ENVIRONMENT

May 7, 2021  
Jessie M. Jones  
DIRECTOR OF HIGHWAYS PROJECT IMPLEMENTATION

PRINTED BY THE AUTHORITY  
OF THE STATE OF ILLINOIS

GROSS LENGTH = 24,261.40 FT. = 4.595 MILES  
NET LENGTH = 23,615.40 FT. = 4.473 MILES

INDEX OF SHEETS

SHEET NO	TITLE
1	COVER SHEET
2	GENERAL NOTES, INDEX OF SHEETS
3	SUMMARY OF QUANTITIES
4	TYPICAL SECTIONS
5	LOCATION MAP
6	SCHEDULE OF QUANTITIES
7-10	DETAILS

THE FOLLOWING STANDARDS ARE A PART OF THESE PLANS AND ARE INCLUDED FOLLOWING THE LAST NUMBERED SHEET OF THE PLANS.

000001-08	STANDARD SYMBOLS, ABBREVIATIONS AND PATTERNS
001006	DECIMAL OF AN INCH AND OF A FOOT
642006-01	SHOULDER RUMBLE STRIP, 8"
701001-02	OFF-ROAD OPERATIONS, 2L, 2W, MORE THAN 15' AWAY
701006-05	OFF-ROAD OPERATIONS, 2L, 2W, 15' TO 24" FROM PAVEMENT EDGE
701011-04	OFF-ROAD MOVING OPERATIONS, 2L, 2W, DAY ONLY
701301-04	LANE CLOSURE, 2L, 2W, SHORT TIME OPERATIONS
701326-04	LANE CLOSURE, 2L, 2W, PAVEMENT WIDENING, FOR SPEEDS >= 45 MPH
701901-08	TRAFFIC CONTROL DEVICES

GENERAL NOTES

THIS SECTION SHALL BE CONSTRUCTED IN ACCORDANCE WITH THE PLANS, THE "STANDARD SPECIFICATIONS FOR ROAD AND BRIDGE CONSTRUCTION", ADOPTED APRIL 1, 2016; THE "SUPPLEMENTAL SPECIFICATIONS AND RECURRING SPECIAL PROVISIONS" INDICATED ON THE CHECK SHEET, AND THE SPECIAL PROVISIONS INCLUDED IN THE PROPOSAL.

THE WORK IN THIS SECTION CONSISTS OF PLACING HMA SAFETY SHOULDERS, AGGREGATE WEDGE SHOULDERS, RUMBLE STRIPS, AND ANY OTHER WORK NEEDED TO COMPLETE THIS SECTION.

ALL EXCESS MATERIAL FROM EXCAVATING AND GRADING EXISTING SHOULDERS SHALL BECOME THE PROPERTY OF I.D.O.T. AND SHALL BE HAULED TO AN I.D.O.T. STORAGE AREA. HAULING THE EXCESS MATERIAL SHALL NOT BE PAID FOR SEPARATELY BUT SHALL BE INCLUDED IN THE PRICES FOR EXCAVATING AND GRADING EXISTING SHOULDERS. THE STORAGE AREA IS NORTH OF THE JUNCTION OF US 40 AND OLD IL 128, THE MAINTENANCE FIELD ENGINEER, DOUG RUDOLPHI, SHALL BE CONTACTED AT 217-299-4636 ONE WEEK PRIOR TO DELIVERY OF THE EXCESS MATERIAL. CONTRACTOR SHALL PROVIDE EQUIPMENT TO PUCH STOCKPILED MATERIAL INTO A PILE.

HMA SHOULDERS SHALL BE OMITTED FROM LOCATIONS WHERE BASE COURSE WIDENING ALREADY EXISTS. HOWEVER, RUMBLE STRIPS SHALL BE CONSTRUCTED AT THESE LOCATIONS.

THE ENGINEER SHALL CHECK THE DEPTH AT EACH BOX CULVERT TO ENSURE 8" CLEARANCE. THE ENGINEER SHALL DETERMINE THE DEPTH TO MILL OR TO OMIT THE AREA COMPLETELY OF HMA SHOULDER.

OMIT RUMBLE STRIPS ON ALL SIDEROADS, PRIVATE, AND COMMERCIAL ENTRANCES AT RADIUS RETURNS. OMIT RUMBLE STRIPS AT MAILBOX TURNOUTS 60' BOTH SIDES OF THE MAILBOX OR AS DETERMINED BY THE ENGINEER. THESE OMISSIONS WILL NOT BE MEASURED FOR PAYMENT.

OMIT HMA SHOULDERS, 8" ON ALL HMA AND PCC SIDEROADS, AND HMA AND PCC ENTRANCES. FIELD ENTRANCES WITH HMA APRONS WILL NOT BE OMITTED FROM HOT-MIX ASPHALT SHOULDERS, 8".

MATERIAL FOR AGGREGATE WEDGE SHOULDER, TYPE B SHALL BE CRUSHED STONE, CRUSHED CONCRETE OR RAP.

THE FOLLOWING MIXTURE REQUIREMENTS ARE APPLICABLE TO THIS PROJECT:

APPLICATION	AC/PG	DESIGN AIR VOIDS	MIXTURE COMPOSITION	FRICTION AGGREGATE	TESTING PARAMETER
HMA SHOULDERS 8" (TOP 2" LIFT)	PG 64-22	4.0% @ N=70	IL - 9.5	MIXTURE C	QC/QA
HMA SHOULDERS 8" (BOTTOM 6" LIFT)	PG 64-22	4.0% @ N=70	IL - 19.0	N/A	QC/QA

MODEL: Default  
 FILE NAME: p:\pub\harronm.dwt\illinois.gov\PIWDOT\Documents\DOT\_Offices\District\_7\Projects\74898\CADD\data\CAD\sheet\074898-sic-gen-rote.dgn

USER NAME = steffenmk	DESIGNED -	REVISED -
	DRAWN -	REVISED -
PLOT SCALE = 100,0000 ' / in.	CHECKED -	REVISED -
PLOT DATE = 3/23/2021	DATE -	REVISED -

STATE OF ILLINOIS  
DEPARTMENT OF TRANSPORTATION

INDEX OF SHEETS &  
GENERAL NOTES

SCALE: SHEET OF SHEETS STA. TO STA.

F.A.P. RTE.	SECTION	COUNTY	TOTAL SHEETS	SHEET NO.
774	D7 SAFETY SHLD 2020-1	VARIOUS	10	2
CONTRACT NO. 74898				
ILLINOIS FED. AID PROJECT				

SUMMARY OF QUANTITIES			TOTAL QUANTITIES	CONSTRUCTION TYPE CODE		
CODE NO	ITEM	UNIT		0021 SHELBY	0021 FAYETTE	0021 EFFINGHAM
20200600	EXCAVATING AND GRADING EXISTING SHOULDER	UNIT	366	130	141	95
48102100	AGGREGATE WEDGE SHOULDER, TYPE B	TON	1391	493	537	361
48203029	HOT-MIX ASPHALT SHOULDERS, 8"	SQ YD	16245	5759	6269	4217
64200108	SHOULDER RUMBLE STRIPS, 8 INCH	FOOT	46179	19491	15133	11555
67100100	MOBILIZATION	LSUM	1	0.44	0.31	0.25
70100500	TRAFFIC CONTROL AND PROTECTION, STANDARD	LSUM	1	0.44	0.31	0.25
	701326					
70103815	TRAFFIC CONTROL SURVEILLANCE	CAL DA	1	0.44	0.31	0.25
70107025	CHANGEABLE MESSAGE SIGN	CAL DA	28	12.32	8.68	7.00
* 78001110	PAINT PAVEMENT MARKING - LINE 4"	FOOT	46522	21591	15179	9752

\* SPECIALTY ITEM

MODEL: Default  
 FILE NAME: p:\public\room.dta\illinois.gov\PIWDOT\Documents\DOT\_Offices\District\_7\Project\174898\CAD\Drawings\174898-sh-500.dgn

REV. - MS

USER NAME = steffenmk DESIGNED - DRAWN - PLOT SCALE = 100.0000' / in. CHECKED - DATE - REVISIED - REVISIED - REVISIED - REVISIED -	STATE OF ILLINOIS DEPARTMENT OF TRANSPORTATION	SUMMARY OF QUANTITIES SCALE: SHEET OF SHEETS STA. TO STA.	F.A.P. RTE. SECTION COUNTY TOTAL SHEETS SHEET NO. 744 D7 SAFETY SHLD 2020-1 VARIOUS 10 3 CONTRACT NO. 74898 ILLINOIS FED. AID PROJECT
---	---	--	--



BEGIN STATION: 625+80

STATION EQUATION 724+20.1 BK / 724+33.4 AH

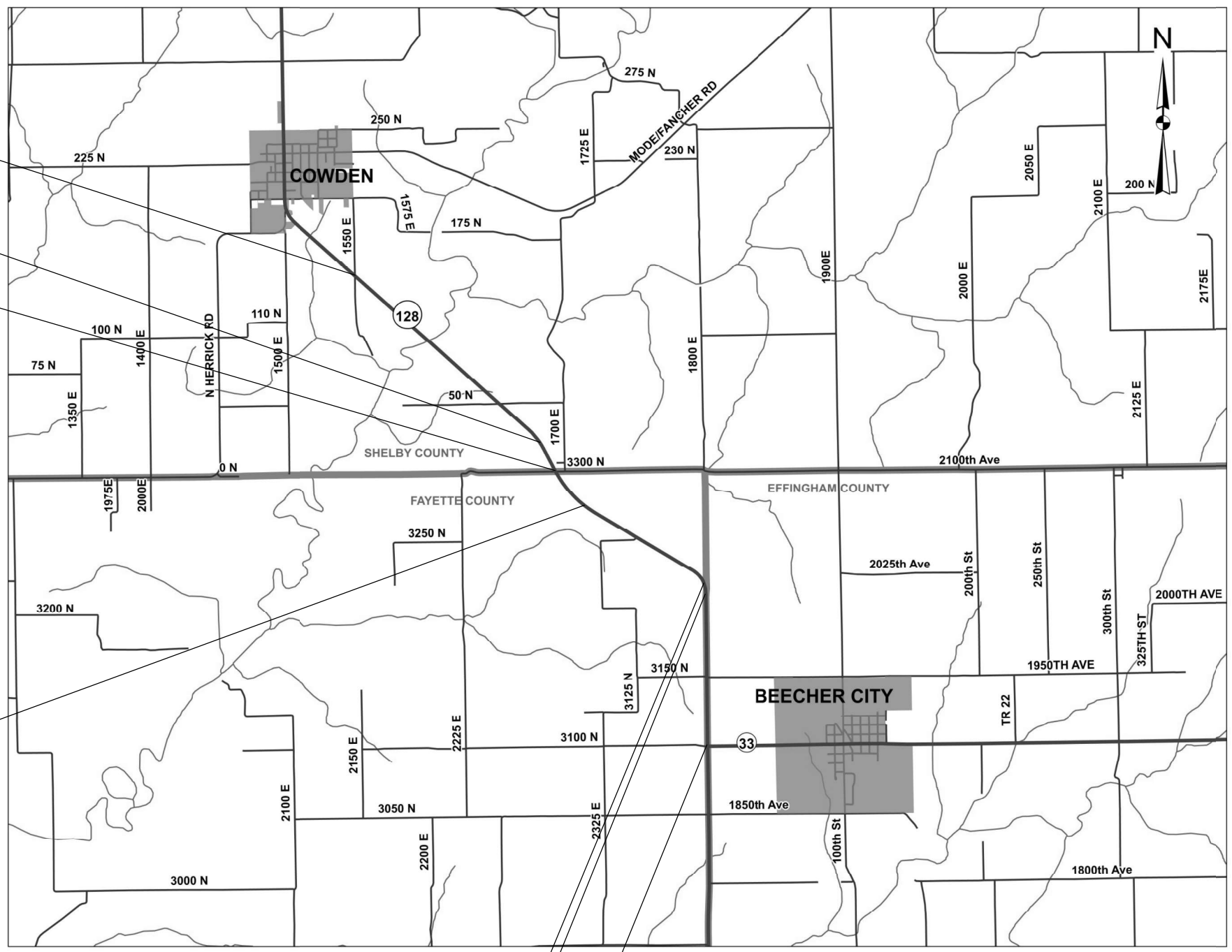
FAYETTE COUNTY: 733+89

STATION EQUATION 756+46.00 BK / 757+05.30 AH

EFFINGHAM COUNTY: 810+38

STATION EQUATION 810+67.20 BK / 811+63.20 AH

END STATION: 870+10



MODEL: Default  
 FILE NAME: p:\pub\harronm.dwg  
 PROJECT: 74898\CADD\Drawings\DOT\_Office\Drawings\74898-1100-1100.dwg

USER NAME = steffenmk	DESIGNED -	REVISED -
	DRAWN -	REVISED -
PLOT SCALE = 100,0000' / in.	CHECKED -	REVISED -
PLOT DATE = 3/23/2021	DATE -	REVISED -

**STATE OF ILLINOIS  
DEPARTMENT OF TRANSPORTATION**

**LOCATION MAP**

SCALE: SHEET OF SHEETS STA. TO STA.

F.A.P. RTE.	SECTION	COUNTY	TOTAL SHEETS	SHEET NO.
774	D7 SAFETY SHLD 2020-1	VARIOUS	10	5
CONTRACT NO. 74898				
ILLINOIS FED. AID PROJECT				

SCHEDULE OF QUANTITIES								
				EXCAVATING AND GRADING EXISTING SHOULDER	AGGREGATE WEDGE SHOULDER TYPE B	HOT-MIX ASPHALT SHOULDERS, 8 INCH	SHOULDER RUMBLE STRIPS, 8 INCH	
STATION TO STATION			LENGTH	WIDTH	20200600	48102100	48203029	64200108
LT			(FOOT)	(FOOT)	(UNIT)	(TON)	(SQ.YD)	(FOOT)
625+80.0	TO	646+98.0	2118.0	26.0	20.6	78.3	914.7	2058.0
646+98.0	TO	681+76.0	3478.0	26.0	0.0	0.0	0.0	2746.0
681+76.0	TO	724+20.1	4244.1	26.0	39.6	150.6	1759.2	3958.1
724+20.1	TO	724+33.4	13.3	26.0	STATION EQUATION			
724+33.4	TO	733+89.0	955.6	26.0	9.0	34.4	401.6	903.6
733+89.0	TO	756+46.0	2257.0	26.0	22.6	85.9	1003.1	2257.0
756+46.0	TO	757+05.3	59.3	26.0	STATION EQUATION			
757+05.3	TO	810+38.0	5332.7	26.0	53.3	202.8	2370.1	5332.7
810+38.0	TO	810+67.2	29.2	26.0	0.3	1.1	13.0	29.2
810+67.2	TO	811+63.2	96.0	26.0	STATION EQUATION			
811+63.2	TO	860+10.0	4846.8	26.0	48.1	183.0	2138.1	4810.8
860+10.0	TO	870+10.0	1000.0	26.0	0.0	0.0	0.0	943.0
RT								
625+80.0	TO	646+98.0	2118.0	26.0	11.6	44.2	516.4	2118.0
646+98.0	TO	681+76.0	3478.0	26.0	0.0	0.0	0.0	2832.0
681+76.0	TO	724+20.1	4244.1	26.0	40.6	154.3	1802.7	4056.1
724+20.1	TO	724+33.4	13.3	26.0	STATION EQUATION			
724+33.4	TO	733+89.0	955.6	26.0	8.2	31.2	364.3	819.6
733+89.0	TO	756+46.0	2257.0	26.0	22.6	85.9	1003.1	2257.0
756+46.0	TO	757+05.3	59.3	26.0	STATION EQUATION			
757+05.3	TO	800+10.0	4304.7	26.0	42.6	162.0	1892.8	4258.7
800+10.0	TO	810+38.0	1028.0	26.0	0.0	0.0	0.0	1028.0
810+38.0	TO	810+67.2	29.2	26.0	0.0	0.0	0.0	29.2
810+67.2	TO	811+63.2	96.0	26.0	STATION EQUATION			
811+63.2	TO	812+57.0	93.8	26.0	0.0	0.0	0.0	93.8
812+57.0	TO	860+10.0	4753.0	26.0	46.5	176.8	2066.2	4713.0
860+10.0	TO	870+10.0	1000.0	26.0	0.0	0.0	0.0	936.0
TOTALS:					366	1391	16245	46180

STRIPING SCHEDULE			
STATION	TO	STATION	WHITE EDGELINE
625+80.0	TO	724+20.1	19680.20
724+20.1	TO	724+33.4	STATION EQUATION
724+33.4	TO	733+89.0	1911.20
733+89.0	TO	756+46.0	4514.00
756+46.0	TO	757+05.3	STATION EQUATION
757+05.3	TO	810+38.0	10665.40
810+38.0	TO	810+67.2	58.40
810+67.2	TO	811+63.2	STATION EQUATION
811+63.2	TO	860+10.0	9693.60
TOTAL:			46522

MODEL: Default  
 FILE NAME: p:\pub\mroom.dwg  
 FILE: p:\pub\mroom.dwg  
 ILLINOIS DOT  
 PROJECT: 74898  
 CAD: DataCAD  
 PROJECT: 74898  
 SHEET: 10 of 10

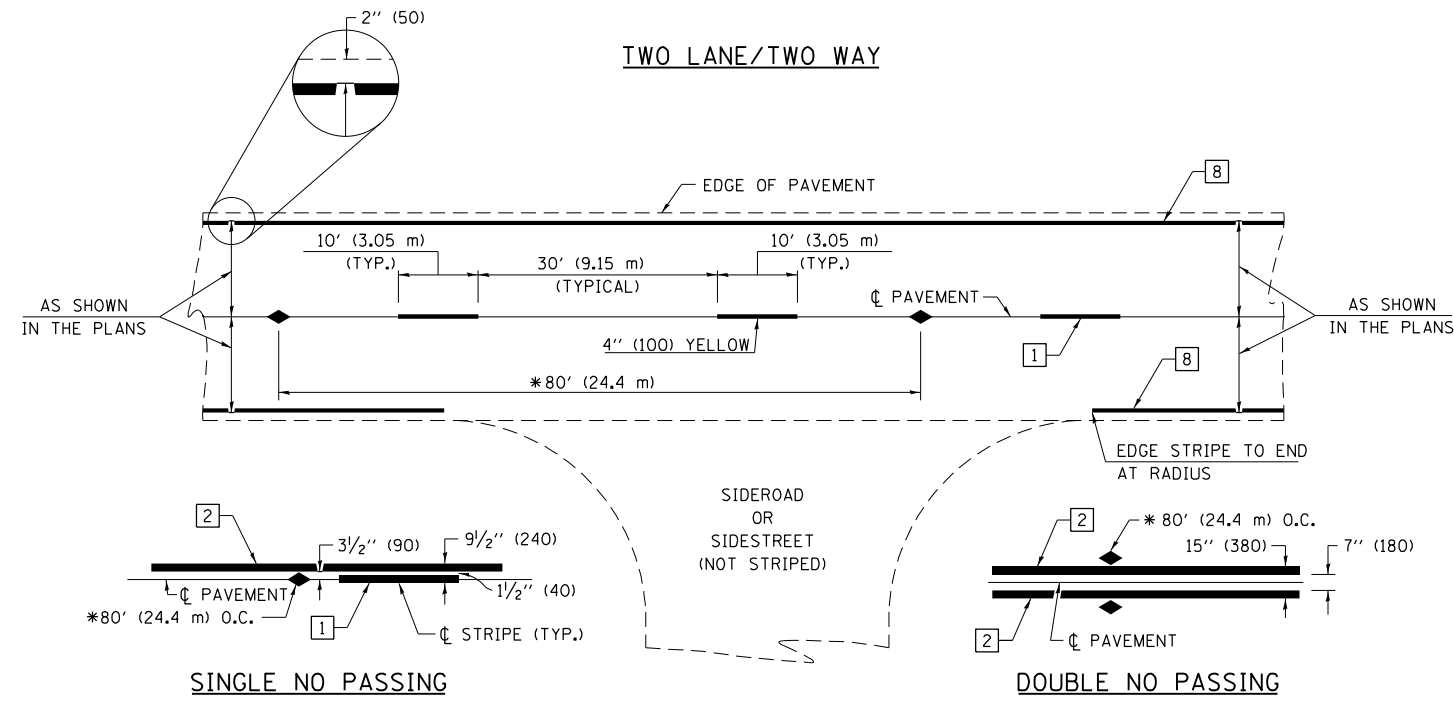
USER NAME = steffenmk	DESIGNED -	REVISED -
	DRAWN -	REVISED -
PLOT SCALE = 100,0000' / in.	CHECKED -	REVISED -
PLOT DATE = 3/23/2021	DATE -	REVISED -

**STATE OF ILLINOIS  
DEPARTMENT OF TRANSPORTATION**

**SCHEDULES OF QUANTITIES**

SCALE: SHEET 1 OF 1 SHEETS STA. TO STA.

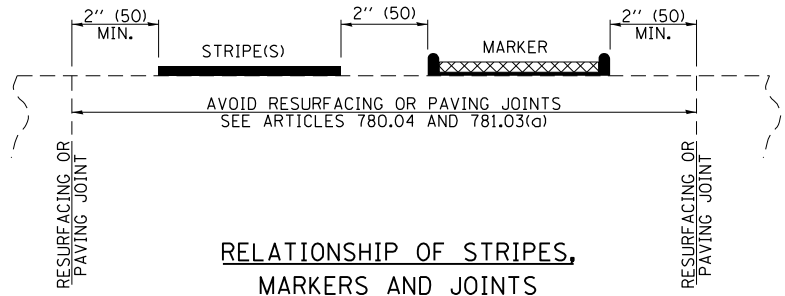
F.A.P. RTE.	SECTION	COUNTY	TOTAL SHEETS	SHEET NO.
774	D7 SAFETY SHLD 2020-1	VARIOUS	10	6
ILLINOIS FED. AID PROJECT			CONTRACT NO. 74898	



\* REDUCE TO 40' (12.2 m) O.C. ON CURVES WITH POSTED OR ADVISORY SPEEDS OF 45 mph (70 km/h) OR LESS.

PAVEMENT MARKING LEGEND

- 1 4" (100) SKIP-DASH (YELLOW)
- 2 4" (100) SOLID (YELLOW)
- 3 12" (300) DIAGONAL (YELLOW)
- 4 4" (100) DOUBLE YELLOW (NARROW)
- 5 12" (300) SOLID WHITE
- 6 RESERVED
- 7 6" (150) SKIP-DASH (WHITE)
- 8 4" (100) SOLID (WHITE)
- 9 12" (300) DIAGONAL (WHITE)
- 10 6" (150) SOLID (WHITE)
- 11 24" (600) STOP BAR (WHITE)
- 12 8" (200) SOLID (WHITE)
- 13 4" (100) PARKING WHITE

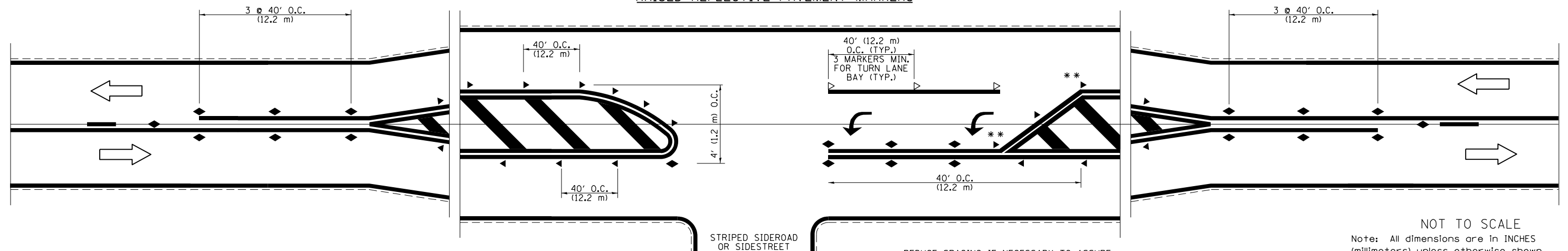


RELATIONSHIP OF STRIPES, MARKERS AND JOINTS

TYPICAL PAVEMENT MARKERS LEGEND

- ◆ TWO-WAY AMBER MARKER
- ▶ ONE-WAY AMBER MARKER
- ▷ ONE-WAY CRYSTAL MARKER

RAISED REFLECTIVE PAVEMENT MARKERS



\*\* REDUCE SPACING IF NECESSARY TO ASSURE MARKERS AT CORNER POINTS.

NOT TO SCALE  
Note: All dimensions are in INCHES (millimeters) unless otherwise shown.

• SHELBY, FAYETTE & EFFINGHAM

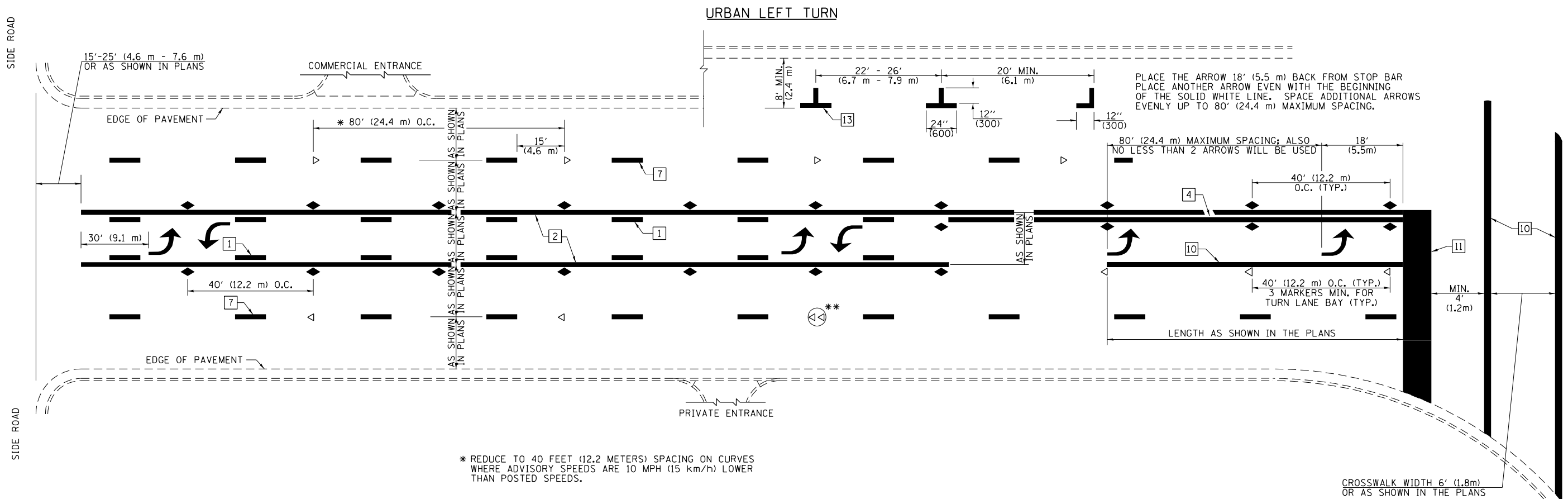
FILE NAME =	USER NAME = steffennk	DESIGNED -	REVISED -
pw:\planning\dot.illinois.gov\PWIDOT\Documents\IDOT Offices\District 7\Projects\74898\DRAWN\CADsheets\0774898-sht-details.dgn		CHECKED -	REVISED -
	PLOT SCALE = 2.0000" / in.	DATE -	REVISED -
	PLOT DATE = 3/23/2021		

STATE OF ILLINOIS  
DEPARTMENT OF TRANSPORTATION

PAVEMENT MARKING AND RAISED REFLECTIVE PAVEMENT MARKERS  
(RURAL & URBAN APPLICATIONS)

SCALE: SHEET NO. 1 OF 4 SHEETS STA. TO STA.

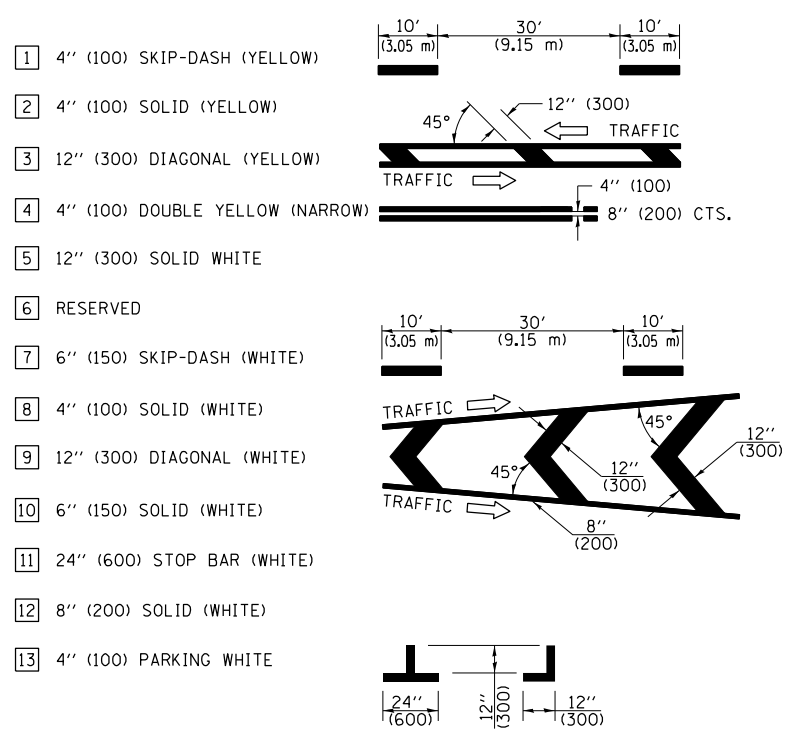
DISTRICT 7 DETAIL NO. 78000001				
F.A.P. RTE.	SECTION	COUNTY	TOTAL SHEETS	SHEET NO.
774	D7 SAFETY SHLD 2020-1	VARIOUS	10	7
			CONTRACT NO. 74898	
ILLINOIS FED. AID PROJECT				



\* REDUCE TO 40 FEET (12.2 METERS) SPACING ON CURVES WHERE ADVISORY SPEEDS ARE 10 MPH (15 km/h) LOWER THAN POSTED SPEEDS.

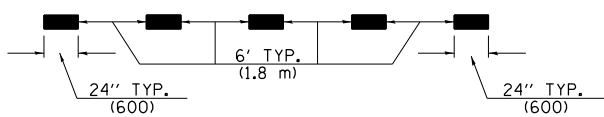
\*\* DOUBLE LANE LINE MARKERS SHALL BE SPECIFIED AND SPACED AS SHOWN IN HIGHWAY STANDARD 781001 FOR MULTI-LANE DIVIDED AND UNDIVIDED HIGHWAYS.

**PAVEMENT MARKING LEGEND**

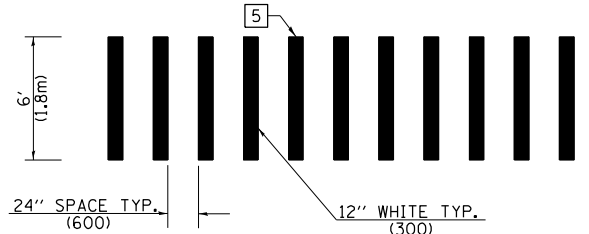


**GENERAL NOTES**

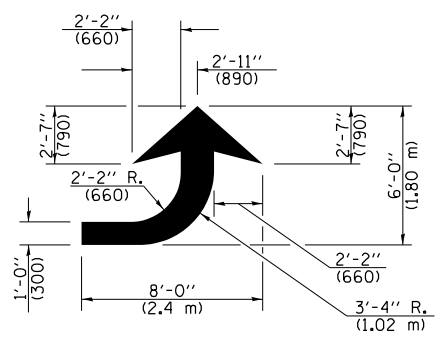
- TURN ARROW PAIRS SHALL BE PLACED AT 250' (75 m) INTERVALS AND SHALL BE EVENLY SPACED BETWEEN BOTH ENDS OF THE BIDIRECTIONAL LEFT TURN LANE. USE A MINIMUM OF TWO PAIRS PER BLOCK.
- THE SOLID YELLOW PAVEMENT MARKINGS [2] SHOULD GENERALLY START OR END NEAR THE RADIUS POINT OF EACH STREET RETURN EXCEPT WHERE ONE OR BOTH ENDS WOULD INCLUDE STOP BARS.
- THE SKIP-DASH PAVEMENT MARKINGS [1] OR [7] SHOULD BE CENTERED BETWEEN BOTH ENDS OF EACH CITY BLOCK AND SHALL BE PLACED SO THEY LINE UP ACROSS FROM EACH OTHER.
- USE LARGE ARROW SIZE FOR BOTH RURAL AND URBAN LOCATIONS. (SEE LAST PAGE OF SECTION 780x FOR SYMBOLS TABLE)
- LANE LINE EXTENSIONS SHALL BE THE SAME COLOR AND WIDTH AS THE LANE LINE BEING EXTENDED.



**LANE LINE EXTENSIONS**

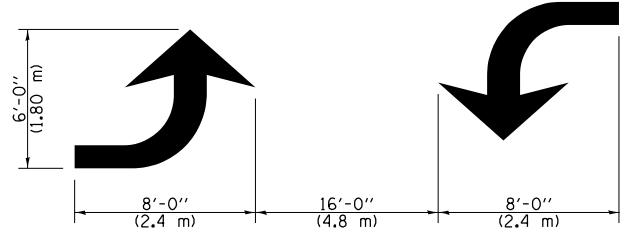


**CROSSWALK DETAIL (DECATUR CITY LIMITS ONLY)**



**LEFT ARROW**

REVERSE FOR RIGHT ARROW  
AREA = 15.6 SQ. FT. (1.47 m<sup>2</sup>)  
(WHITE)



**TYPICAL DOUBLE TURN ARROWS (WHITE)**

NOT TO SCALE

Note: All dimensions are in INCHES (millimeters) unless otherwise shown.

FILE NAME =	USER NAME = steffennk	DESIGNED -	REVISED -
pw:\planroom.dot\illinois.gov\PWIDOT\Documents\IDOT Offices\District 7\Projects\74898\DRAWN\CADsheets\0774898-sht-details.dwg		CHECKED -	REVISED -
		DATE -	REVISED -

**STATE OF ILLINOIS  
DEPARTMENT OF TRANSPORTATION**

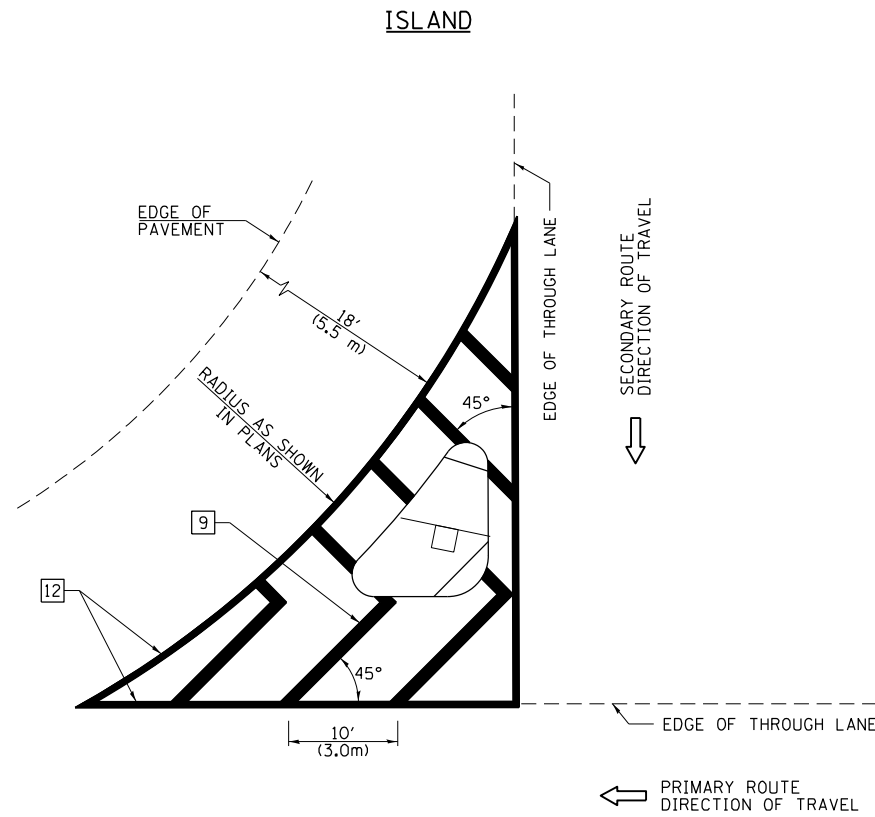
**PAVEMENT MARKING AND RAISED REFLECTIVE PAVEMENT MARKERS  
(RURAL & URBAN APPLICATIONS)**

SCALE: SHEET NO. 2 OF 4 SHEETS STA. TO STA.

• SHELBY, FAYETTE & EFFINGHAM

<b>DISTRICT 7 DETAIL NO. 78000001</b>				
F.A.P. RTE.	SECTION	COUNTY	TOTAL SHEETS	SHEET NO.
774	D7 SAFETY SHLD 2020-1	VARIOUS	10	8
				CONTRACT NO. 74898
ILLINOIS FED. AID PROJECT				



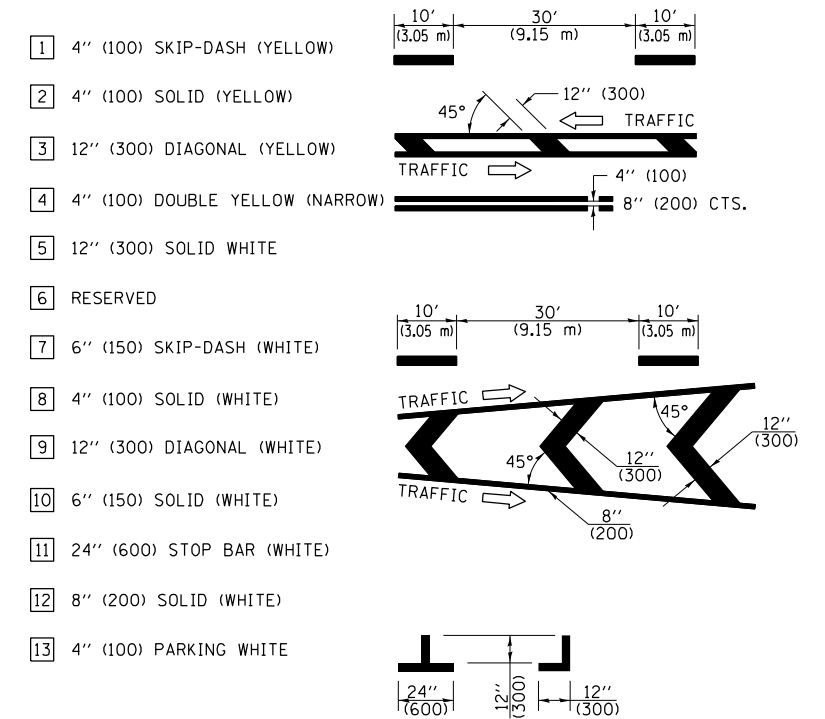


**GENERAL NOTES**

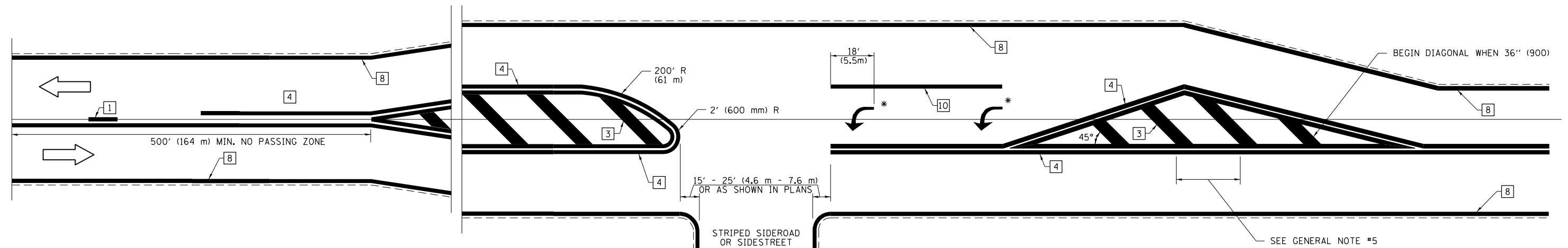
1. RAISED AND CORRUGATED MEDIANS SHALL BE OUTLINED WITH [2] IF PRESENT.
2. SOME OF THE INFORMATION INCLUDED WITH THIS DETAIL MAY NOT BE APPLICABLE TO THIS IMPROVEMENT.
3. PAVEMENT MARKINGS ARE TO BE EXTENDED THROUGH OMISSIONS WHEN APPLICABLE.
4. FINAL PAVEMENT MARKINGS SHALL BE IN PLACE PRIOR TO PLACING ANY RAISED REFLECTIVE PAVEMENT MARKERS.
5. THE FOLLOWING CRITERIA SHALL BE USED FOR SELECTING THE DIAGONAL PAVEMENT MARKING SPACING:

< 30 MPH (< 50 km/h)	15' (4.5 m)
30-45 MPH (50-75 km/h)	20' (6.0 m)
> 45 MPH (> 75 km/h)	30' (9.0 m)

**PAVEMENT MARKING LEGEND**



**RURAL LEFT TURN STRIPING**



\* PLACE AN ARROW 18' (5.5 m) BACK FROM STOP BAR. PLACE ANOTHER ARROW EVEN WITH THE BEGINNING OF THE SOLID WHITE LINE. SPACE ADDITIONAL ARROWS EVENLY UP TO 80' (24.4 m) MAXIMUM SPACING. USE MINIMUM OF 2 ARROWS.

SEE GENERAL NOTE #5

NOT TO SCALE

Note: All dimensions are in INCHES (millimeters) unless otherwise shown.

• SHELBY, FAYETTE & EFFINGHAM

**DISTRICT 7 DETAIL NO. 78000001**

FILE NAME =	USER NAME = steffenmk	DESIGNED -	REVISED -
pw:\planningroom.dot\illinois.gov\PIDOT\Documents\IDOT Offices\District 7\Projects\74898\DRAWN\CADsheets\0774898-shd-details.dgn		REVISIONS	REVISIONS
	PLOT SCALE = 2.0000' / in.	CHECKED -	REVISED -
	PLOT DATE = 3/23/2021	DATE -	REVISED -

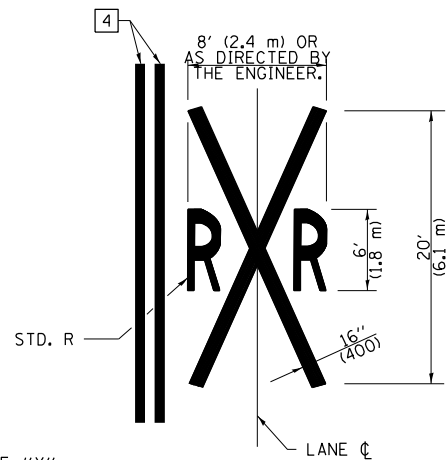
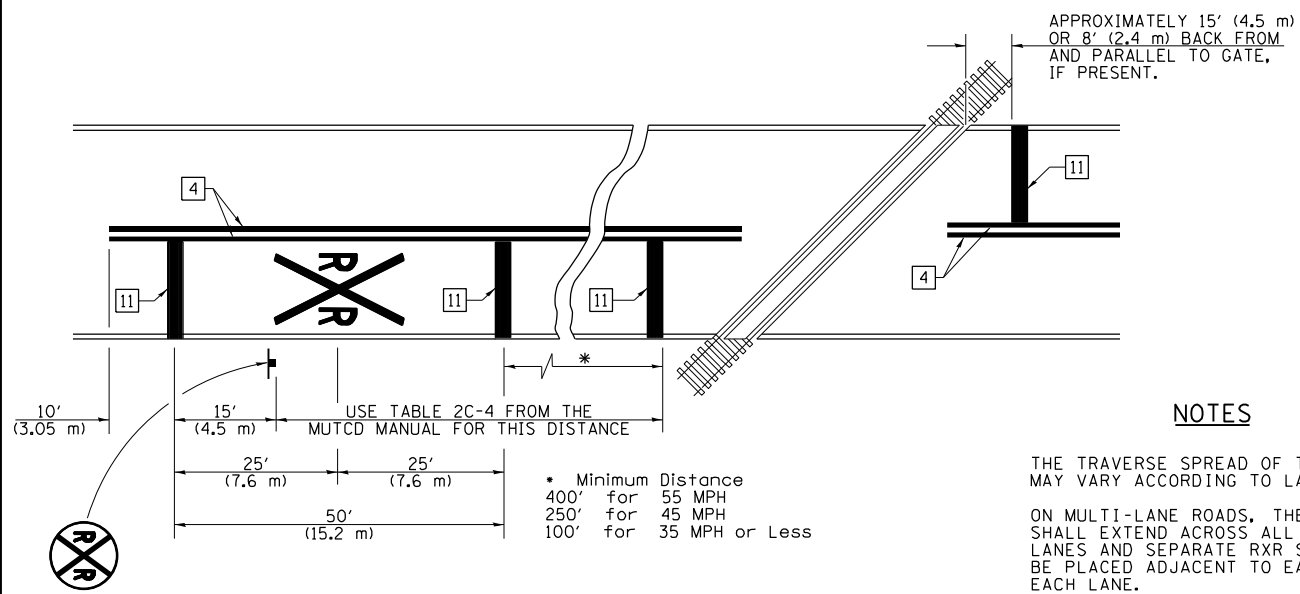
**STATE OF ILLINOIS  
DEPARTMENT OF TRANSPORTATION**

**PAVEMENT MARKING AND RAISED REFLECTIVE PAVEMENT MARKERS  
(RURAL & URBAN APPLICATIONS)**

SCALE: SHEET NO. 3 OF 4 SHEETS STA. TO STA.

F.A.P. RTE.	SECTION	COUNTY	TOTAL SHEETS	SHEET NO.
774	D7 SAFETY SHLD 2020-1	VARIOUS	10	9
				CONTRACT NO. 74898
ILLINOIS FED. AID PROJECT				

PAVEMENT MARKINGS AT RAILROAD-HIGHWAY GRADE CROSSING



NOTES

THE TRAVERSE SPREAD OF THE "X" MAY VARY ACCORDING TO LANE WIDTH.

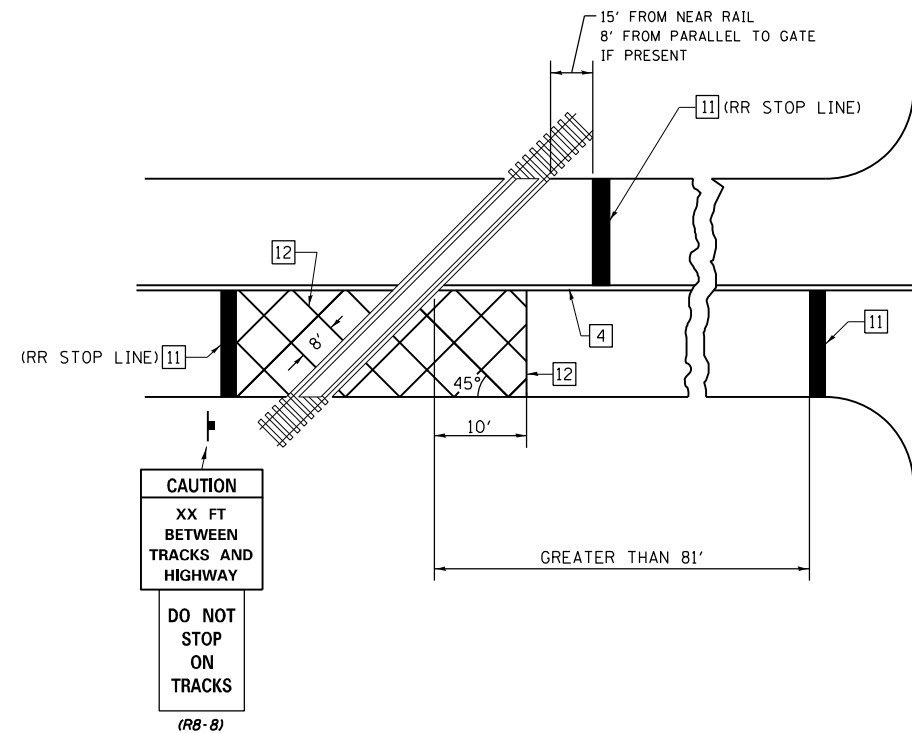
ON MULTI-LANE ROADS, THE STOP LINES SHALL EXTEND ACROSS ALL APPROACH LANES AND SEPARATE RXR SYMBOLS SHALL BE PLACED ADJACENT TO EACH OTHER IN EACH LANE.

WHEN THE PAVEMENT MARKING SYMBOL IS USED, A PORTION OF THE SYMBOL SHOULD BE LOCATED DIRECTLY ADJACENT TO THE ADVANCE WARNING SIGN (W10-1) AS PLACED BY TABLE II-1, CONDITION B OF THE MUTCD.

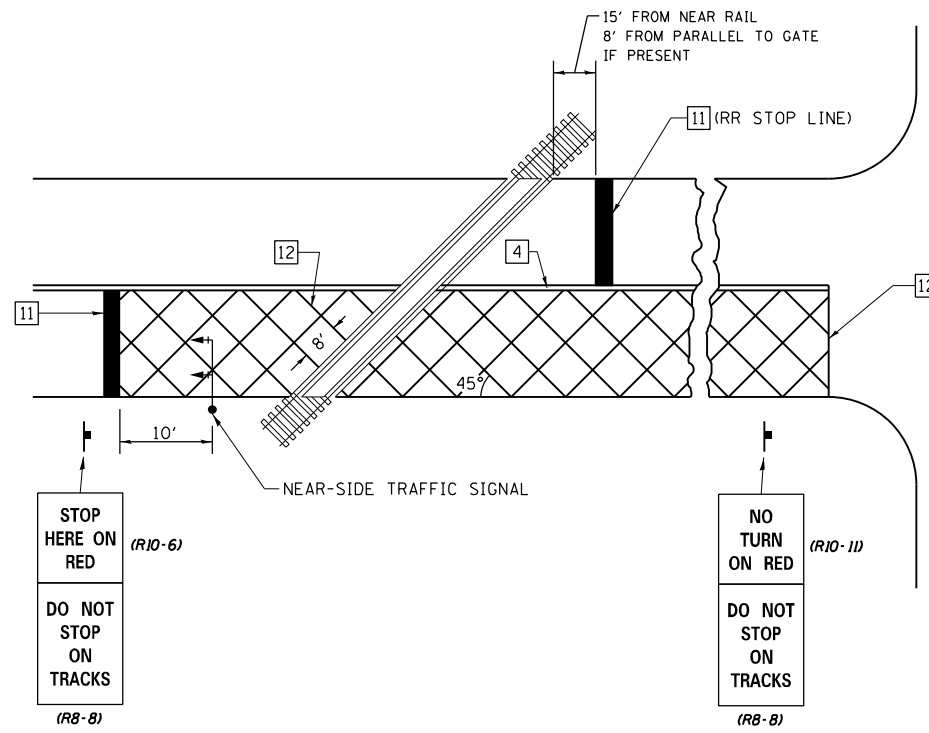
PAVEMENT MARKING LEGEND

- 1 4" (100) SKIP-DASH (YELLOW)
- 2 4" (100) SOLID (YELLOW)
- 3 12" (300) DIAGONAL (YELLOW)
- 4 4" (100) DOUBLE YELLOW (NARROW)
- 5 12" (300) SOLID WHITE
- 6 RESERVED
- 7 6" (150) SKIP-DASH (WHITE)
- 8 4" (100) SOLID (WHITE)
- 9 12" (300) DIAGONAL (WHITE)
- 10 6" (150) SOLID (WHITE)
- 11 24" (600) STOP BAR (WHITE)
- 12 8" (200) SOLID (WHITE)
- 13 4" (100) PARKING WHITE

RAILROAD CROSSING WITH INTERCONNECT ONLY



RAILROAD CROSSING WITH INTERCONNECT AND PRE-SIGNALS



GENERAL NOTES

- SUPPLEMENTAL PAVEMENT MARKINGS TO BE INSTALLED ONLY ON APPROACHES TO INTERSECTIONS CONTROLLED BY TRAFFIC SIGNALS WHICH ARE INTERCONNECTED WITH THE RAILROAD WARNING SIGNALS.
- EXTEND PAVEMENT MARKINGS TO THE INTERSECTION ONLY WHERE NEAR-SIDE TRAFFIC SIGNALS ARE USED.

SUPPLEMENTAL PAVEMENT MARKING TREATMENT FOR RAILROAD-HIGHWAY GRADE CROSSING

NOT TO SCALE

Note: All dimensions are in INCHES (millimeters) unless otherwise shown.

• SHELBY, FAYETTE & EFFINGHAM

FILE NAME =	USER NAME = steffennk	DESIGNED -	REVISED -
pw:\planroom.dot.illinois.gov\PIWIDOT\Documents\IDOT Offices\District 7\Projects\74898\DRAWN\CADsheets\0774898-sht-details.dgn		REVISIONS	REVISIONS
	PLOT SCALE = 2.0000" / in.	CHECKED -	REVISED -
	PLOT DATE = 3/23/2021	DATE -	REVISED -

STATE OF ILLINOIS  
DEPARTMENT OF TRANSPORTATION

PAVEMENT MARKING AND RAISED REFLECTIVE PAVEMENT MARKERS  
(RURAL & URBAN APPLICATIONS)

SCALE: SHEET NO. 4 OF 4 SHEETS STA. TO STA.

DISTRICT 7 DETAIL NO. 78000001

F.A.P. RTE.	SECTION	COUNTY	TOTAL SHEETS	SHEET NO.
774	D7 SAFETY SHLD 2020-1	VARIOUS	10	10
			CONTRACT NO. 74898	
ILLINOIS FED. AID PROJECT				