

STATE OF ILLINOIS
DEPARTMENT OF TRANSPORTATION

F.A.P. RTE.	SECTION	COUNTY	TOTAL SHEETS	SHEET NO.
10	129RS-5	MADISON	14	1
		ILLINOIS	CONTRACT NO. 76N72	

FOR INDEX OF SHEETS, SEE SHEET NO. 2

MADISON COUNTY		TRAFFIC DATA
LOCATION		US 67
2021 ADT		13300 (ACTUAL)
2041 ADT		15600 (ESTIMATED)
MU%		2.1
SU%		3.1

MADISON COUNTY		TRAFFIC DATA
LOCATION		IL 111/L 267
2021 ADT		8700 (ACTUAL)
2041 ADT		10400 (ESTIMATED)
MU%		6.3
SU%		5.7

PROPOSED HIGHWAY PLANS

FAP ROUTE 10 (IL 111/L 267/US 67)
SECTION: 129RS-5
PROJECT NHPP-TUKU(293)
SMART OVERLAY
MADISON COUNTY

C-98-041-22

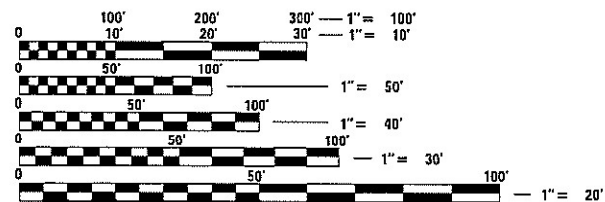


FUNCTIONAL CLASSIFICATION: OTHER ARTERIAL

BEGIN PROJECT
(EXISTING JOINT)
STA. 165+15
LAT: 38.966864°
LONG: -90.193001°

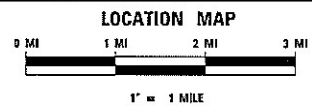
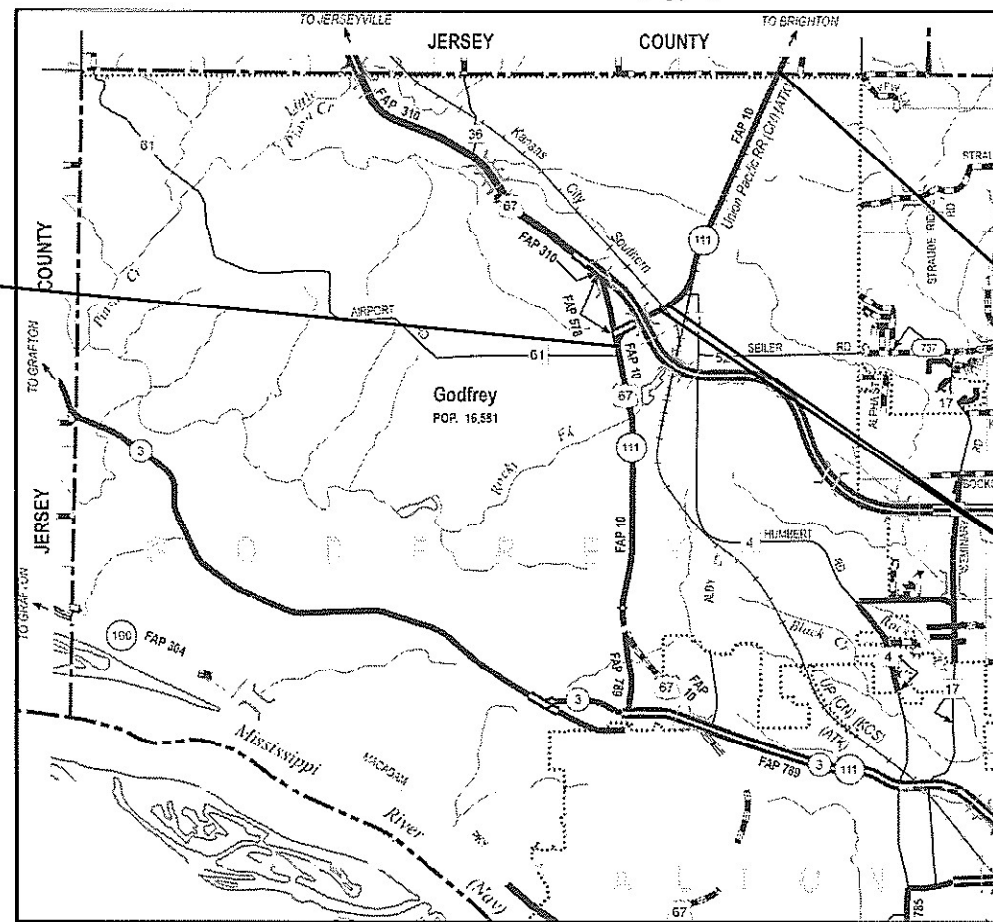
END PROJECT
(JERSEY/MADISON COUNTY LINE)
EXISTING JOINT
STA. 1309+34
LAT: 39.999332°
LONG: -90.168785°

RAILROAD OMISSION:
STA. 1196+17 TO STA. 1196+31
(14')



FULL SIZE PLANS HAVE BEEN PREPARED USING STANDARD ENGINEERING SCALES. REDUCED SIZED PLANS WILL NOT CONFORM TO STANDARD SCALES. IN MAKING MEASUREMENTS ON REDUCED PLANS, THE ABOVE SCALES MAY BE USED.

J.U.L.I.E.
JOINT UTILITY LOCATION INFORMATION FOR EXCAVATORS
1 800 882 0123
OR 811



GROSS LENGTH = 14,362 FT. = 2.72 MILE
NET LENGTH = 14,348 FT. = 2.71 MILE

PROJECT ENGINEER: BILLIE OWEN (618) 346-3209
PROJECT MANAGER: PHIL FREIMUTH (618) 346-3194

CONTRACT NO. 76N72

STATE OF ILLINOIS
DEPARTMENT OF TRANSPORTATION

SUBMITTED March 11, 2021
Ruth Roberts
REGIONAL ENGINEER

May 7, 2021 [Signature]
ENGINEER OF DESIGN AND ENVIRONMENT

May 7, 2021 [Signature]
DIRECTOR OF HIGHWAYS PROJECT IMPLEMENTATION 13

PRINTED BY THE AUTHORITY
OF THE STATE OF ILLINOIS

INDEX OF SHEETS

1	COVER SHEET
2	INDEX OF SHEETS, HIGHWAY STANDARDS, GENERAL NOTES, MIXTURE REQUIREMENTS & COMMITMENTS
3-4	SUMMARY OF QUANTITIES
5-8	TYPICAL SECTIONS
9-10	SCHEDULE OF QUANTITIES
11	LOCATION MAP
12	DETAILS, SURVEY MONUMENTS
13-14	DETECTOR LOOP REPLACEMENT PLANS

HIGHWAY STANDARDS

000001-08	STANDARD SYMBOLS, ABBREVIATIONS AND PATTERNS
001006	DECIMAL OF AN INCH AND OF A FOOT
701011-04	OFF-ROAD MOVING OPERATIONS, 2L, 2W DAY ONLY
701201-05	LANE CLOSURE, 2L, 2W, DAY ONLY
701306-04	LANE CLOSURE, 2L, 2W, SLOW MOVING OPERATIONS DAY ONLY, FOR SPEEDS ≥ 45 MPH
701501-06	URBAN LANE CLOSURE, 2L, 2W UNDIVIDED
701502-09	URBAN LANE CLOSURE, 2L, 2W WITH BIDIRECTIONAL LEFT TURN LANE
701602-10	URBAN LANE CLOSURE, MULTILANE, 2W WITH BIDIRECTIONAL LEFT TURN LANE
701606-10	URBAN SINGLE LANE CLOSURE, MULTILANE, 2W WITH MOUNTABLE MEDIAN
701611-01	URBAN HALF ROAD CLOSURE, MULTILANE, 2W WITH MOUNTABLE MEDIAN
701701-10	URBAN LANE CLOSURE MULTILANE INTERSECTION
701901-08	TRAFFIC CONTROL DEVICES
780001-05	TYPICAL PAVEMENT MARKINGS
781001-04	TYPICAL APPLICATIONS RAISED REFLECTIVE PAVEMENT MARKERS
886001-01	DETECTOR LOOP INSTALLATIONS
886006-01	TYPICAL LAYOUTS FOR DETECTION LOOPS

GENERAL NOTES

① AGENCIES KNOWN TO HAVE FACILITIES WITHIN THE PROJECT AREA ARE AS FOLLOWS:

	AERIAL	BURIED
AMEREN ILLINOIS (GAS & ELECTRIC)	X	X
AT&T ILLINOIS (COMMUNICATIONS)	X	X
VILLAGE OF BRIGHTON (WATER & SANITARY SEWER)		X
CHARTER COMMUNICATIONS, INC. (CABLE TV)		X
EVERSTREAM GLC HOLDING COMPANY LLC (COMMUNICATIONS)	X	X
VILLAGE OF GODFREY (SANITARY SEWER)	X	X
ILLINOIS AMERICAN WATER COMPANY (SANITARY SEWER)		X
ILLINOIS AMERICAN WATER COMPANY (WATER)		X
JERSEY COUNTY RURAL WATER COMPANY (WATER)		X
LEVEL 3 COMMUNICATIONS, LLC (COMMUNICATIONS)	X	X
SPRINT (COMMUNICATIONS)	X	X
ZAYO GROUP LLC (COMMUNICATIONS)	X	X

② NO SURVEY WAS PERFORMED FOR THIS PROJECT. THE PLANS WERE CREATED USING MICROFLIM AND FIELD MEASUREMENTS.

③ THE ILLINOIS DEPARTMENT OF TRANSPORTATION STRONGLY ENCOURAGES THE PRIME CONTRACTOR AND THEIR APPROVED SUB-CONTRACTORS TO HIRE MINORITY, WOMEN AND DISADVANTAGED INDIVIDUALS FROM ITS FEDERALLY FUNDED HIGHWAY CONSTRUCTION CAREERS TRAINING PROGRAM (HCCTP) TO HELP MEET WORKFORCE AND TRAINEE GOALS. THIS PROGRAM IS TRAINING MINORITIES, WOMEN AND DISADVANTAGED INDIVIDUALS IN HIGHWAY CONSTRUCTION-RELATED SKILLS, E.G., MATH FOR THE TRADES, JOB READINESS, TECHNICAL SKILLS COURSEWORK (CARPENTRY, CONCRETE FLATWORK, BLUEPRINT READING, SITE PLANS, SITE WORK, TOOLS USE, ETC.) AND OSHA 10 HOUR CERTIFICATION, TO PREPARE THEM FOR A CAREER IN THE HIGHWAY CONSTRUCTION TRADES. GRADUATES ARE WELL-TRAINED AND READY TO BECOME PRODUCTIVE ENTRY-LEVEL CONSTRUCTION WORKERS. PLEASE CONTACT THE DISTRICT 8 EEO OFFICE AT 618-346-3360 AND/OR THE HCCTP COORDINATOR AT 618-874-6528 TO LEARN MORE ABOUT THE PROGRAM AND FOR ASSISTANCE IN MEETING WORKFORCE AND TRAINEE GOALS.

④ NO OVERNIGHT LANE CLOSURES WILL BE PERMITTED.

- ⑤ THE PROPOSED PAVEMENT MARKINGS AND TEMPORARY PAVEMENT MARKINGS SHALL MATCH THE EXISTING PAVEMENT MARKINGS AND CONTINUE THROUGHOUT THE JOB AND TIE INTO THE EXISTING PAVEMENT MARKINGS AT THE END OF THE PROJECT.
- ⑥ FOUR CHANGEABLE MESSAGE SIGNS SHALL BE PROVIDED ALONG IL 111/IL 267/US 67 TO ALERT DRIVERS OF THE UPCOMING ROAD CONSTRUCTION. CHANGEABLE MESSAGE SIGNS SHALL BE PLACED 14 DAYS PRIOR TO BEGINNING ANY WORK. EXACT LOCATIONS OF THE CHANGEABLE MESSAGE SIGNS SHALL BE DETERMINED BY THE ENGINEER.
- ⑦ MATERIAL TRANSFER DEVICE CAN OPERATE IN AN UNLOADED CONDITION ON STRUCTURE SN 060-2592.
- ⑧ IF ANY STATE OWNED UNDERGROUND CABLE NEEDS LOCATING, IT WILL BE PAID FOR BY SECTION 109.04.
- ⑨ ONLY SHORT-TERM MARKING FROM THE FINAL SURFACE SHALL BE PAID FOR AS "SHORT TERM PAVEMENT MARKING REMOVAL"

MIXTURE REQUIREMENTS

ROUTE	FAP 10 (IL 111/IL 267/US 67)
SECTION	129RS-5
COUNTY	MADISON
CONTRACT	76N72

DESCRIPTION	SMART OVERLAY ON IL 111/IL 267/US 67 (GODFREY RD.) FROM JERSEY COUNTY LINE TO 0.1 MILES NORTH OF AIRPORT RD. IN GODFREY
-------------	---

ADT (CONSTRUCTION YR.):	8700
MU%	4.22
SU%	5.72
20 YR. ESAL'S	2.95

MIXTURE USE	SURFACE	PATCHING	INCIDENTAL
AC/PG	PG 64-22	PG 64-22	PG 64-22
RAP % (MAX)	SEE SPECIAL PROVISION	SEE SPECIAL PROVISION	SEE SPECIAL PROVISION
DESIGN AIR VOIDS	4.0 % @ Ndes=90	4.0 % @ Ndes=90	4.0 % @ Ndes=90
MIX COMPOSTION (Gradation)	IL 9.5	IL 19.0	IL 9.5
FRICTION AGG	MIXTURE "D"	MIXTURE "B"	MIXTURE "D"
QUALITY MGMT PROGRAM	QC/QA	QC/QA	QC/QA

MIXTURE USE	SHOULDER (SURFACE)
AC/PG	PG 64-22
RAP % (MAX)	SEE SPECIAL PROVISION
DESIGN AIR VOIDS	4.0 % @ Ndes=30
MIX COMPOSTION (Gradation)	IL 9.5L
FRICTION AGG	
QUALITY MGMT PROGRAM	QC/QA

PLAN QUANTITIES FOR HOT-MIX-ASPHALT ITEMS ARE CALCULATED USING A UNIT WEIGHT OF 112 LB/SQ YD/IN.

COMMITMENTS

NONE

REV. - MS

MODEL: D:\p1\work\11111111\11111111.dwg
 FILE: 11111111.dwg
 PROJECT: 11111111
 USER: MILLERRAJ
 DATE: 3/10/2021

USER NAME = MILLERRAJ	DESIGNED -	REVISED -
	DRAWN -	REVISED -
PLOT SCALE = 100.0000' / in.	CHECKED -	REVISED -
PLOT DATE = 3/10/2021	DATE -	REVISED -

**STATE OF ILLINOIS
DEPARTMENT OF TRANSPORTATION**

**INDEX OF SHEET, HIGHWAY STANDARDS, GENERAL NOTES,
MIXTURE REQUIREMENT, COMMITMENTS**

SCALE: 50 SHEET 1 OF 1 SHEETS STA. TO STA.

F.A.P. RTE.	SECTION	COUNTY	TOTAL SHEETS	SHEET NO.
10	129RS-5	MADISON	14	2
			CONTRACT NO. 76N72	
ILLINOIS FED. AID PROJECT				

MODEL: Default
 FILE NAME: \\paulhammon.dot.illinois.gov\PI\DOT\Documents\DOT_Offices\District 8\Projects\076N72\CAD\Drawings\076N72-111-conc.dwg

CODE NO.	ITEM	UNIT	TOTAL QUANTITY	CONSTR. CODE	
				ROADWAY	
				80% FED 20% STATE	0005 URBAN
40600290	BITUMINOUS MATERIALS (TACK COAT)	POUND	29389	29389	
40600990	TEMPORARY RAMP	SQ YD	248	248	
40604064	HOT-MIX ASPHALT SURFACE COURSE, IL-9.5, MIX "D", N90	TON	4653	4653	
40800029	BITUMINOUS MATERIALS (TACK COAT)	POUND	38	38	
40800050	INCIDENTAL HOT-MIX ASPHALT SURFACING	TON	14	14	
44000155	HOT-MIX ASPHALT SURFACE REMOVAL, 1 1/2"	SQ YD	65310	65310	
44200144	PAVEMENT PATCHING, TYPE II, 12 INCH	SQ YD	48	48	
48203100	HOT-MIX ASPHALT SHOULDERS	TON	819	819	
67000400	ENGINEER'S FIELD OFFICE, TYPE A	CAL MO	3	3	
67100100	MOBILIZATION	L SUM	1	1	
70100450	TRAFFIC CONTROL AND PROTECTION, STANDARD 701201	L SUM	1	1	
70100460	TRAFFIC CONTROL AND PROTECTION, STANDARD 701306	L SUM	1	1	
70102620	TRAFFIC CONTROL AND PROTECTION, STANDARD 701501	L SUM	1	1	
70102622	TRAFFIC CONTROL AND PROTECTION, STANDARD 701502	L SUM	1	1	

CODE NO.	ITEM	UNIT	TOTAL QUANTITY	CONSTR. CODE	
				ROADWAY	
				80% FED 20% STATE	0005 URBAN
70102632	TRAFFIC CONTROL AND PROTECTION, STANDARD 701602	L SUM	1	1	
70102634	TRAFFIC CONTROL AND PROTECTION, STANDARD 701611	L SUM	1	1	
70102635	TRAFFIC CONTROL AND PROTECTION, STANDARD 701701	L SUM	1	1	
70107025	CHANGEABLE MESSAGE SIGN	CAL DA	56	56	
70300100	SHORT TERM PAVEMENT MARKING	FOOT	11986	11986	
70300150	SHORT TERM PAVEMENT MARKING REMOVAL	SQ FT	1998	1998	
70300210	TEMPORARY PAVEMENT MARKING LETTERS AND SYMBOLS	SQ FT	590	590	
70300220	TEMPORARY PAVEMENT MARKING - LINE 4"	FOOT	50934	50934	
70300250	TEMPORARY PAVEMENT MARKING - LINE 8"	FOOT	981	981	
70300260	TEMPORARY PAVEMENT MARKING - LINE 12"	FOOT	572	572	
70300280	TEMPORARY PAVEMENT MARKING - LINE 24"	FOOT	288	288	
* 78000100	THERMOPLASTIC PAVEMENT MARKING - LETTERS AND SYMBOLS	SQ FT	590	590	
* 78000200	THERMOPLASTIC PAVEMENT MARKING - LINE 4"	FOOT	50934	50934	
* 78000500	THERMOPLASTIC PAVEMENT MARKING - LINE 8"	FOOT	981	981	

* SPECIALTY ITEM

MODEL: Default
 FILE NAME: \\paulhammon.dot.illinois.gov\PIWDOT\Documents\DOT_Offices\District 8\Projects\076N72\CADD\DATA\CAD\Access\076N72-rl-convec.dwg

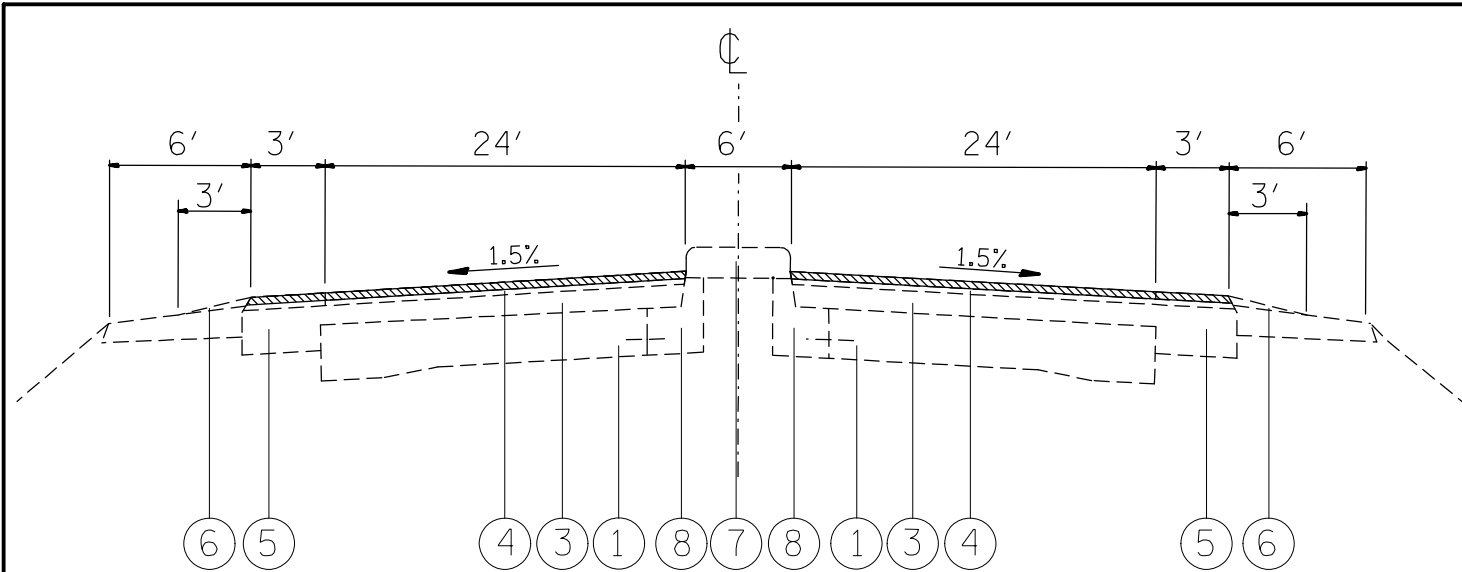
CODE NO.	ITEM	UNIT	TOTAL QUANTITY	CONSTR. CODE	
				80% FED 20% STATE	ROADWAY 0005 URBAN
* 78000600	THERMOPLASTIC PAVEMENT MARKING - LINE 12"	FOOT	572		572
* 78000650	THERMOPLASTIC PAVEMENT MARKING - LINE 24"	FOOT	288		288
* 78100100	RAISED REFLECTIVE PAVEMENT MARKER	EACH	517		517
	78300200 RAISED REFLECTIVE PAVEMENT MARKER REMOVAL	EACH	517		517
* 88600600	DETECTOR LOOP REPLACEMENT	FOOT	1430		1430
	X7030005 TEMPORARY PAVEMENT MARKING REMOVAL	SQ FT	17592		17592
	Z0033700 LONGITUDINAL JOINT SEALANT	FOOT	23610		23610
	Z0034105 MATERIAL TRANSFER DEVICE	TON	4653		4653
	Z0048665 RAILROAD PROTECTIVE LIABILITY INSURANCE	L SUM	1		1
	Z0070100 SURVEY MONUMENT COVER ASSEMBLY	EACH	4		4
∅	Z0076600 TRAINEES	HOUR	1000		1000
∅	Z0076604 TRAINEES TRAINING PROGRAM GRADUATE	HOUR	1000		1000

* SPECIALTY ITEM

∅ 0042

REV. - MS

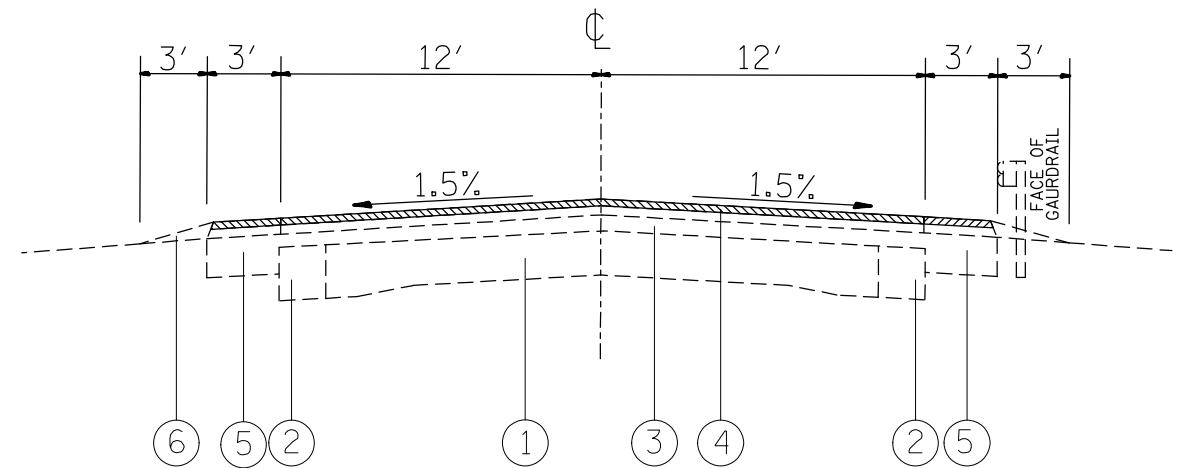
USER NAME = MILLERRAI	DESIGNED -	REVISED -	STATE OF ILLINOIS DEPARTMENT OF TRANSPORTATION	SUMMARY OF QUANTITIES			F.A.P. RTE.	SECTION	COUNTY	TOTAL SHEETS	SHEET NO.
PLOT SCALE = 100,0000' / in.	DRAWN -	REVISED -					10	129RS-5	MADISON	14	4
PLOT DATE = 3/10/2021	CHECKED -	REVISED -		SCALE: 50	SHEET 2	OF 2 SHEETS	STA.	TO STA.	CONTRACT NO. 76N72		
	DATE -	REVISED -		ILLINOIS FED. AID PROJECT							



EXISTING TYPICAL SECTION (IL 111/IL 267)

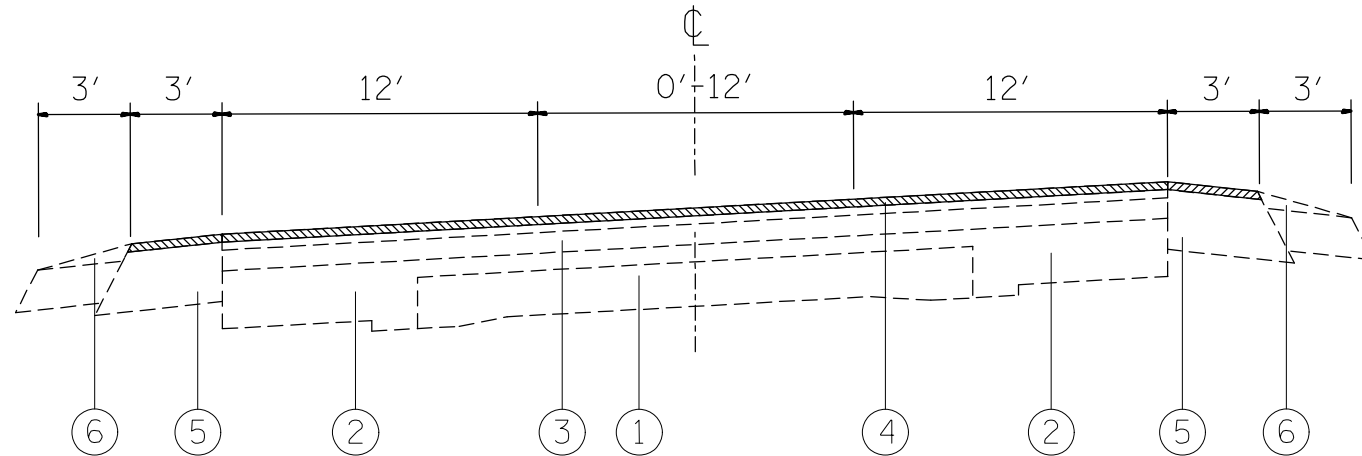
STA. 1195+69 TO STA. 1196+17
 (RAILROAD OMISSION) STA. 1196+17 TO STA. 1196+31
 STA. 1196+31 TO STA. 1196+79

HMA SURFACE REMOVAL 1 1/2"



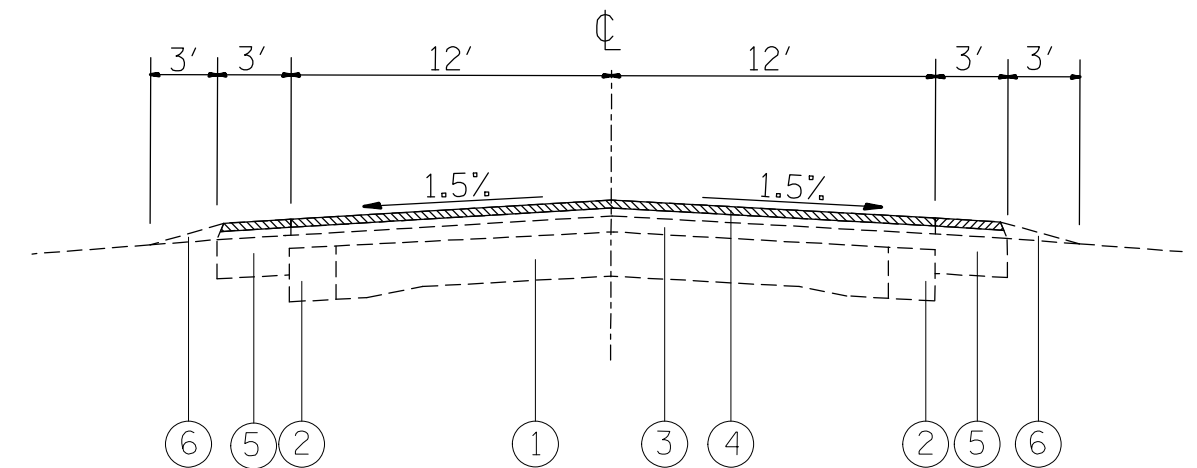
EXISTING TYPICAL SECTION (IL 111/IL 267)

STA. 1223+63 TO STA. 1235+25



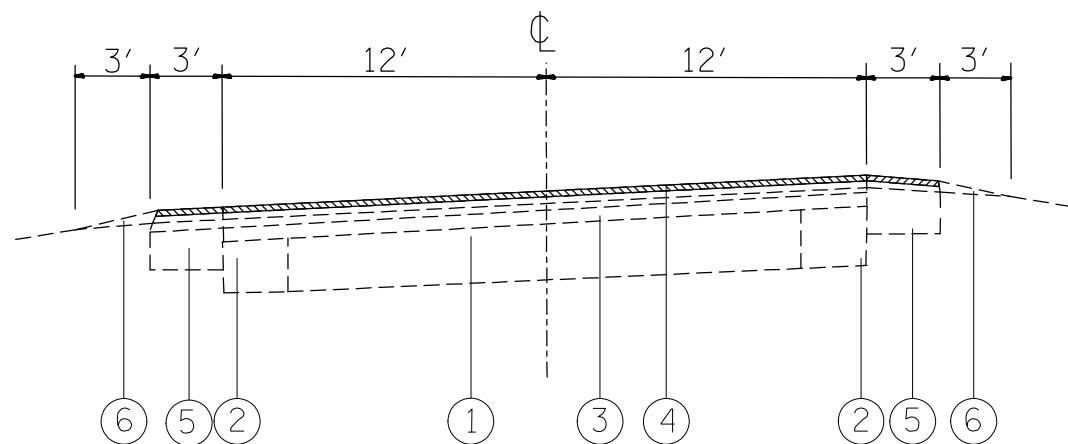
EXISTING SUPERELEVATED TYPICAL SECTION (IL 111/IL 267)

STA. 1196+79 TO STA. 1211+55



EXISTING TYPICAL SECTION (IL 111/IL 267)

STA. 1219+47 TO STA. 1223+63
 STA. 1235+25 TO STA. 1309+34



EXISTING SUPERELEVATED TYPICAL SECTION (IL 111/IL 267)

STA. 1211+55 TO STA. 1219+47

LEGEND

- ① EXISTING PCC 9-6-9 PAVEMENT
- ② EXISTING HMA WIDENING
- ③ EXISTING HMA RESURFACING
- ④ EXISTING HMA SURFACE COURSE, 1 1/2"
- ⑤ EXISTING HMA SHOULDERS
- ⑥ EXISTING AGGREGATE SHOULDERS
- ⑦ EXISTING CONCRETE MEDIAN
- ⑧ EXISTING CURB AND GUTTER
- ⑨ EXISTING SUB BASE GRANULAR MATERIAL
- ⑩ EXISTING HMA SURFACE COURSE, 2 1/4"
- ⑪ PROPOSED HMA SURFACE COURSE, IL -9.5, MIX "D", N90, 1 1/2"
- ⑫ PROPOSED LONGITUDINAL JOINT SEALANT
- ⑬ PROPOSED BITUMINOUS MATERIAL (TACK COAT)
- ⑭ PROPOSED HMA SHOULDER, 1 1/2"

MODEL: Default
 FILE NAME: \\paulhanrahan.com\dtd\illinc\gov\PIWDOT\Documents\DOT_Office\District 8\Projects\0876N72\CAD\Drawings\0876N72-01-0000.dwg
 PLOT DATE: 3/10/2021

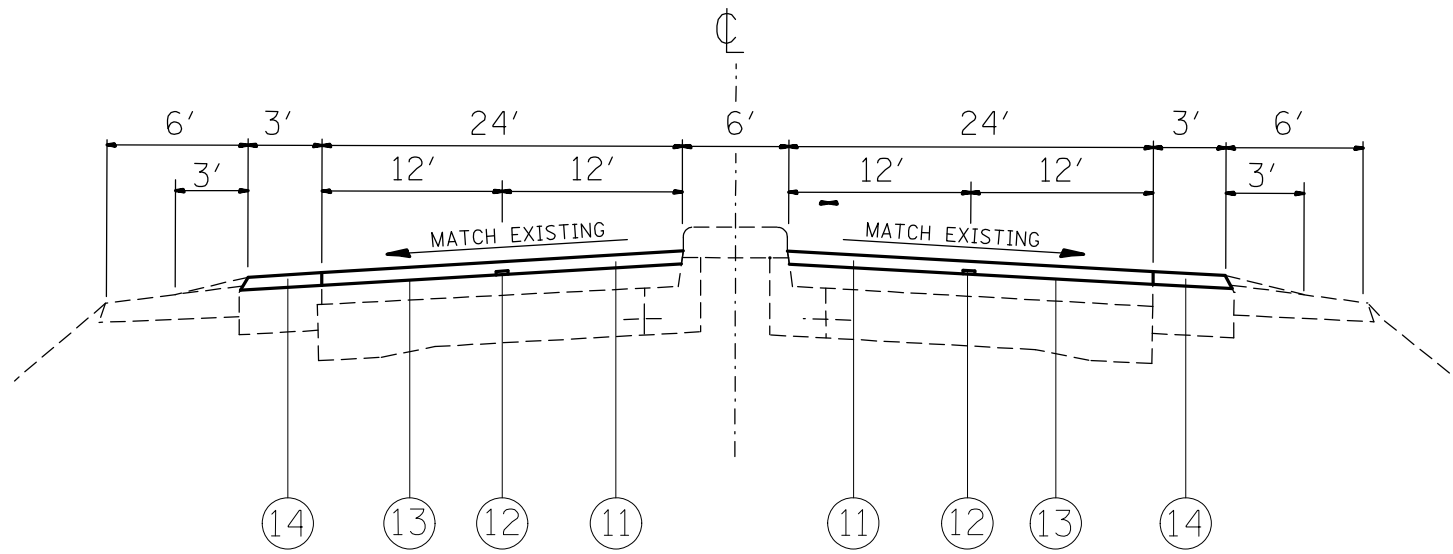
USER NAME = MILLERRAI	DESIGNED -	REVISED -
	DRAWN -	REVISED -
PLOT SCALE = 100,0000' / in.	CHECKED -	REVISED -
PLOT DATE = 3/10/2021	DATE -	REVISED -

**STATE OF ILLINOIS
 DEPARTMENT OF TRANSPORTATION**

EXISTING TYPICAL SECTIONS

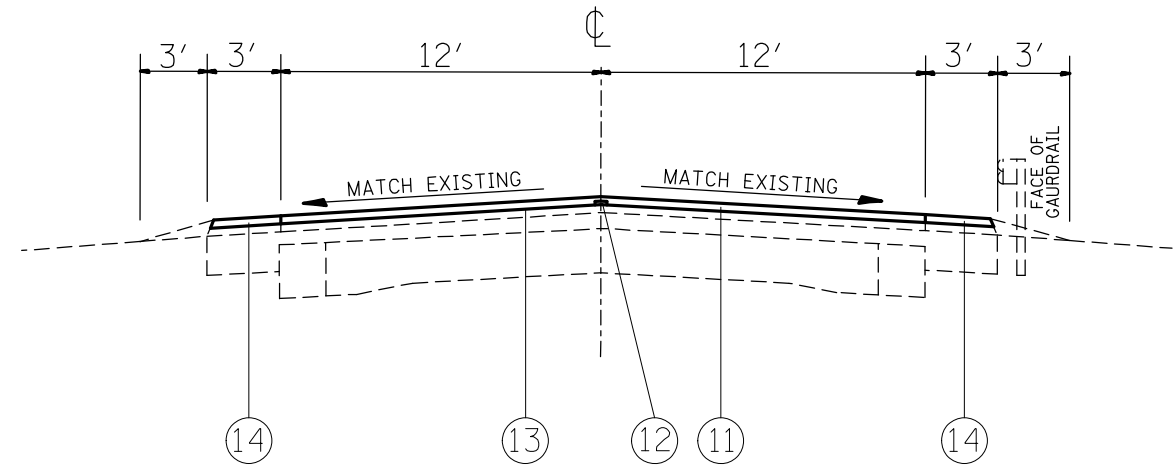
SCALE: NTS SHEET 2 OF 4 SHEETS STA. TO STA.

F.A.P. RTE.	SECTION	COUNTY	TOTAL SHEETS	SHEET NO.
10	129RS-5	MADISON	14	6
CONTRACT NO. 76N72				
ILLINOIS FED. AID PROJECT				



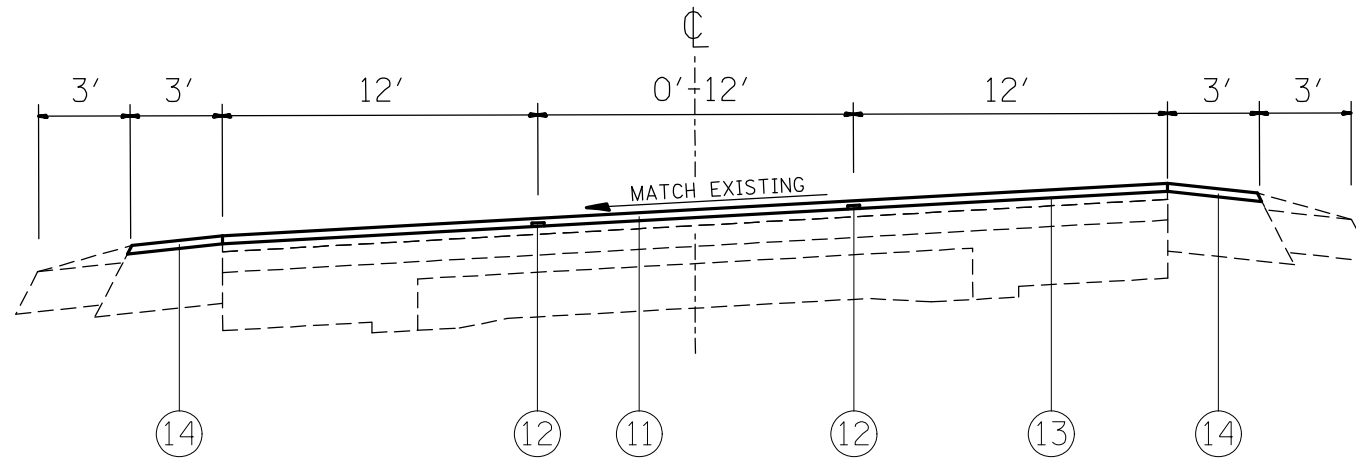
PROPOSED TYPICAL SECTION (IL 111/IL 267)

STA. 1195+69 TO STA. 1196+17
 (RAILROAD OMISSION) STA. 1196+17 TO STA. 1196+31
 STA. 1196+31 TO STA. 1196+79



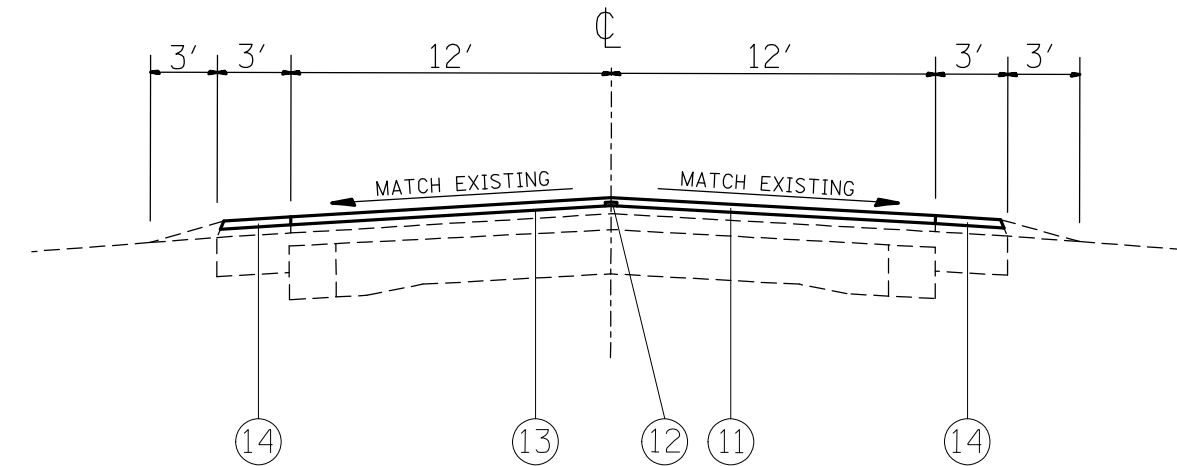
PROPOSED TYPICAL SECTION (IL 111/IL 267)

STA. 1223+63 TO STA. 1235+25



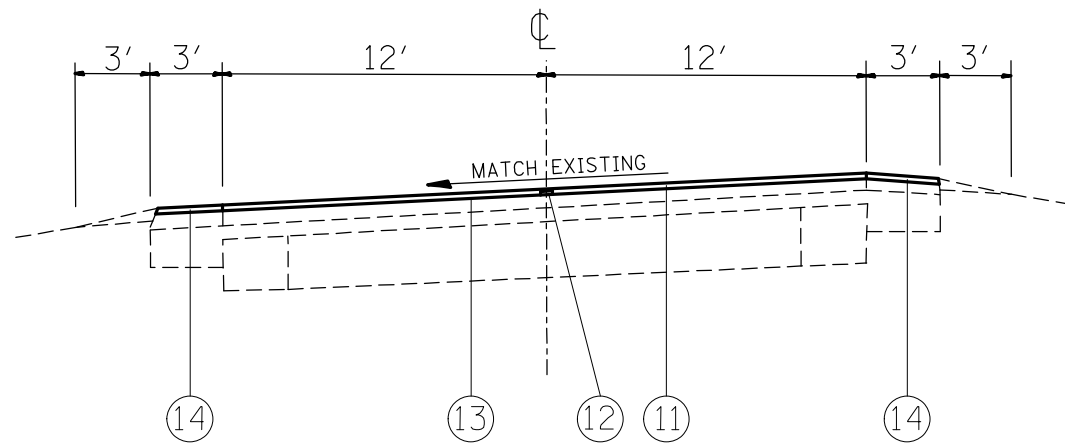
PROPOSED SUPERELEVATED TYPICAL SECTION (IL 111/IL 267)

STA. 1196+79 TO STA. 1211+55



PROPOSED TYPICAL SECTION (IL 111/IL 267)

STA. 1219+47 TO STA. 1223+63
 STA. 1235+25 TO STA. 1309+34



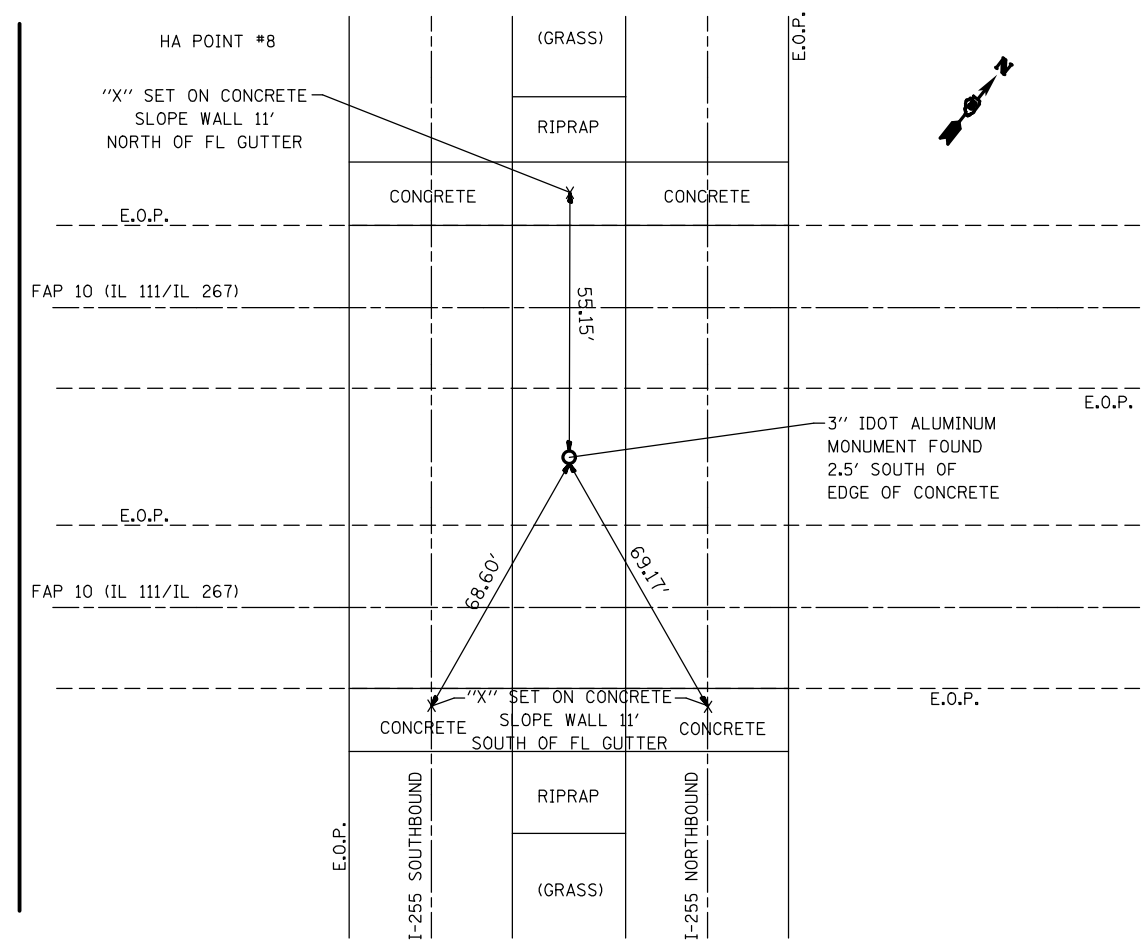
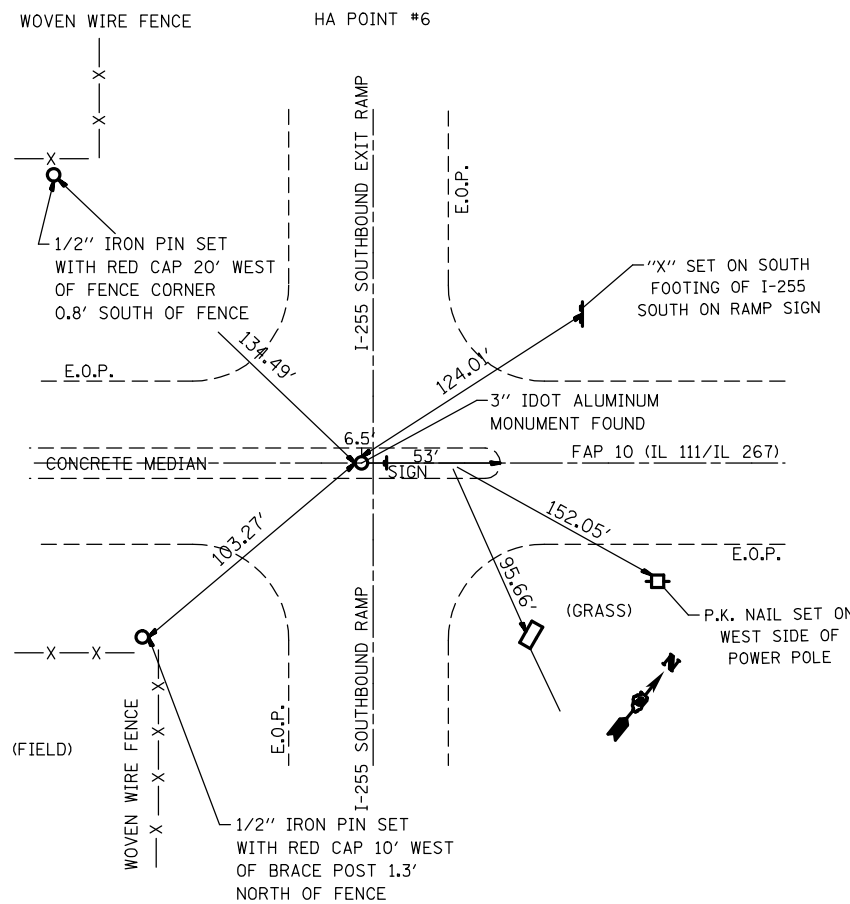
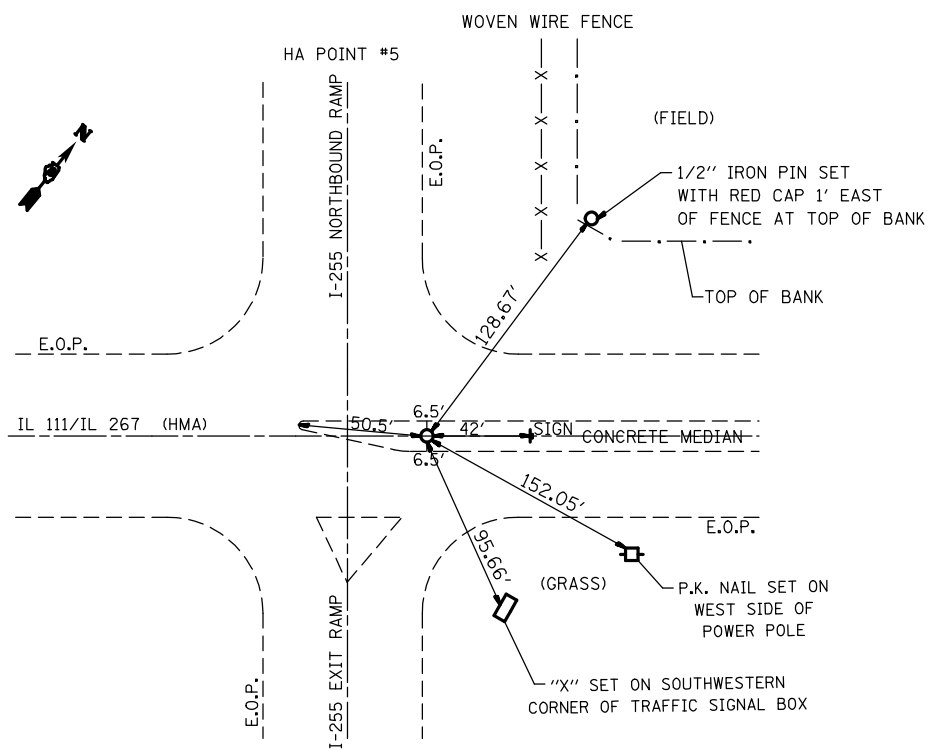
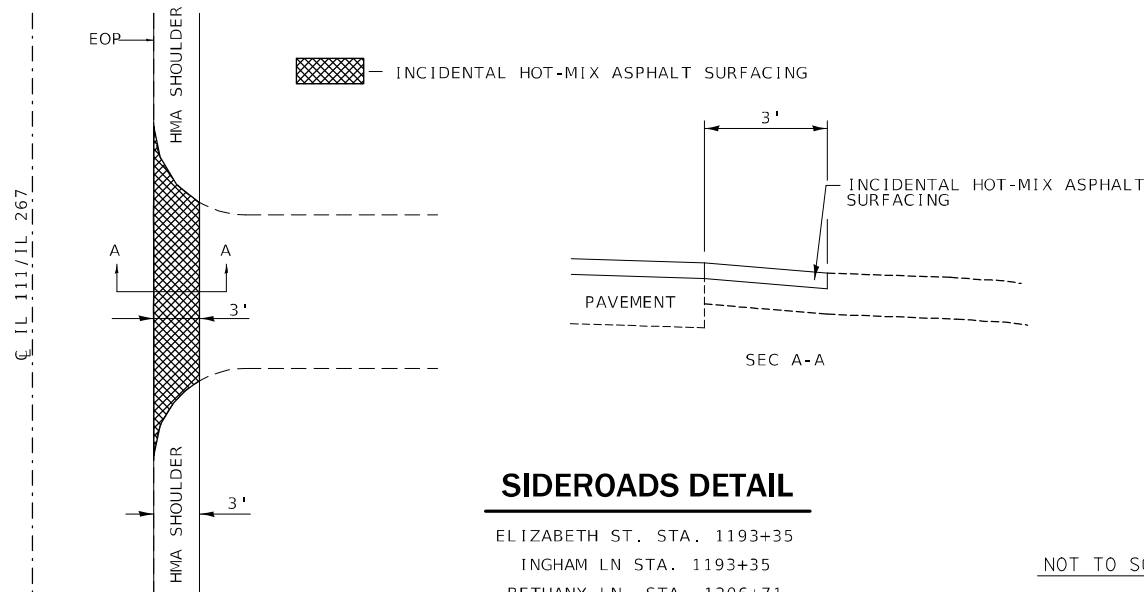
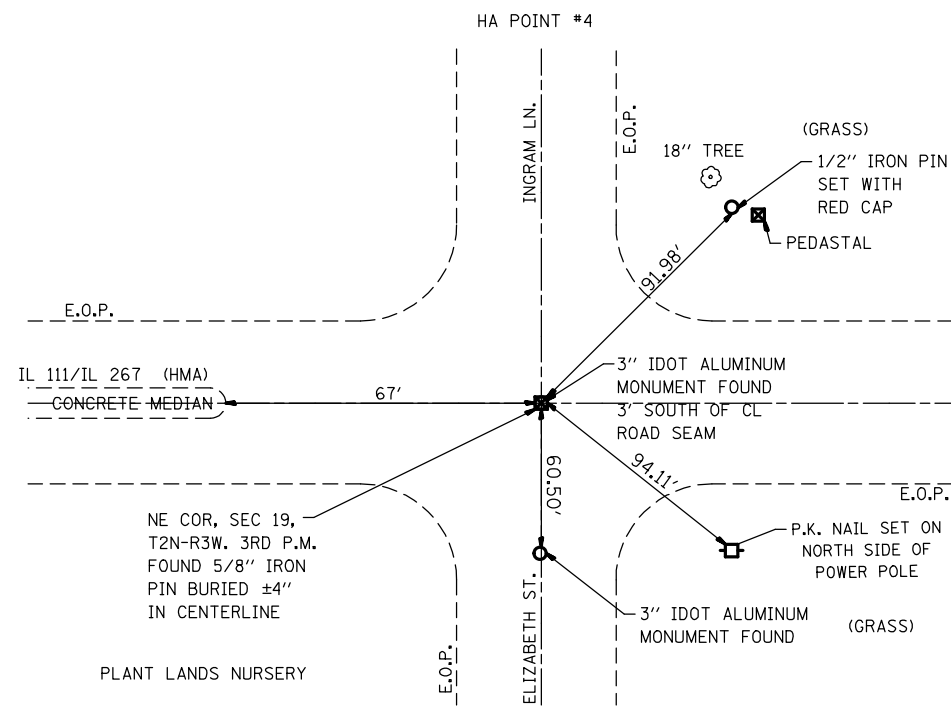
PROPOSED SUPERELEVATED TYPICAL SECTION (IL 111/IL 267)

STA. 1211+55 TO STA. 1219+47

LEGEND

- ① EXISTING PCC 9-6-9 PAVEMENT
- ② EXISTING HMA WIDENING
- ③ EXISTING HMA RESURFACING
- ④ EXISTING HMA SURFACE COURSE, 1 1/2"
- ⑤ EXISTING HMA SHOULDERS
- ⑥ EXISTING AGGREGATE SHOULDERS
- ⑦ EXISTING CONCRETE MEDIAN
- ⑧ EXISTING CURB AND GUTTER
- ⑨ EXISTING SUB BASE GRANULAR MATERIAL
- ⑩ EXISTING HMA SURFACE COURSE, 2 1/4"
- ⑪ PROPOSED HMA SURFACE COURSE, IL -9.5, MIX "D", N90, 1 1/2"
- ⑫ PROPOSED LONGITUDINAL JOINT SEALANT
- ⑬ PROPOSED BITUMINOUS MATERIAL (TACK COAT)
- ⑭ PROPOSED HMA SHOULDER, 1 1/2"

MODEL: Default
 FILE NAME: p:\data\baronon.dwg
 PLOT DATE: 3/10/2021
 PLOT SCALE: = 100,0000 ' / in.
 USER NAME: MILLERRAI
 DESIGNED -
 DRAWN -
 CHECKED -
 DATE -
 REVISED -
 REVISED -
 REVISED -
 REVISED -
 REVISED -
 REVISED -
 STATE OF ILLINOIS
 DEPARTMENT OF TRANSPORTATION
 PROPOSED TYPICAL SECTIONS
 SCALE: NTS SHEET 4 OF 4 SHEETS STA. TO STA.
 F.A.P. RTE. SECTION COUNTY TOTAL SHEETS SHEET NO.
 10 129RS-5 MADISON 14 8
 ILLINOIS FED. AID PROJECT CONTRACT NO. 76N72



MODEL: P:\default
 FILE NAME: P:\data\767\767\767\CADD\data\CAD\project\767\7672-shr-convec.dwg
 PROJECT: 767\767\767\CADD\data\CAD\project\767\7672-shr-convec.dwg

USER NAME = MILLERRAI	DESIGNED -	REVISED -
	DRAWN -	REVISED -
PLOT SCALE = 100,0000' / in.	CHECKED -	REVISED -
PLOT DATE = 3/10/2021	DATE -	REVISED -

STATE OF ILLINOIS
DEPARTMENT OF TRANSPORTATION

DETAILS, SURVEY MONUMENTS	
SCALE: 50	SHEET 1 OF 1 SHEETS
STA.	TO STA.

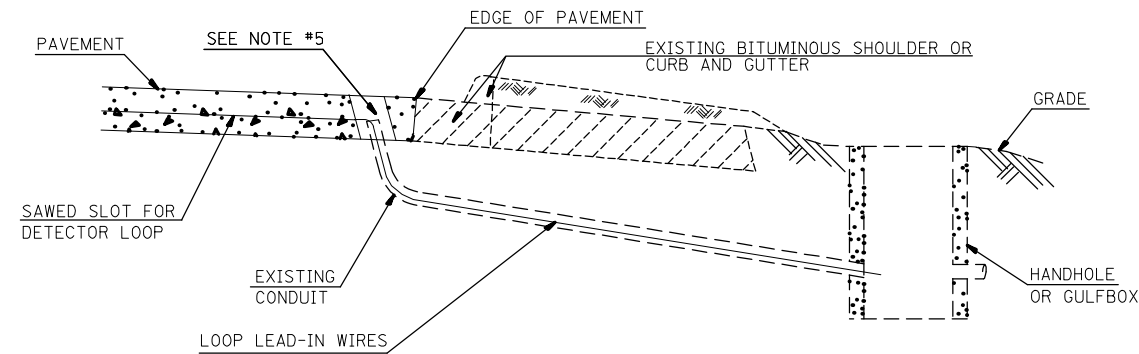
F.A.P. RTE. 10	SECTION 129RS-5	COUNTY MADISON	TOTAL SHEETS 14	SHEET NO. 12
CONTRACT NO. 76N72				
ILLINOIS FED. AID PROJECT				

NOTES:

SEE TABLE "DETECTOR LOOP REQUIREMENTS AND CALCULATIONS" FOR LOOP SIZE AND CALCULATED NUMBER OF TURNS.

SEE "DETAIL A" FOR INSTALLING DETECTOR LOOP WIRES IN EXISTING CONDUITS.

SCHEDULE OF QUANTITIES			TOTAL QUANTITIES	LARS HOFFMAN CROSSING (IL-111) AND US 67 (GODFREY RD.)
CODE NO	ITEM	UNIT		
88600600	DETECTOR LOOP REPLACEMENT	FOOT	1430	1430



DETAIL A

(NO SCALE)

INSTALLING DETECTOR LOOP WIRES IN EXISTING CONDUIT

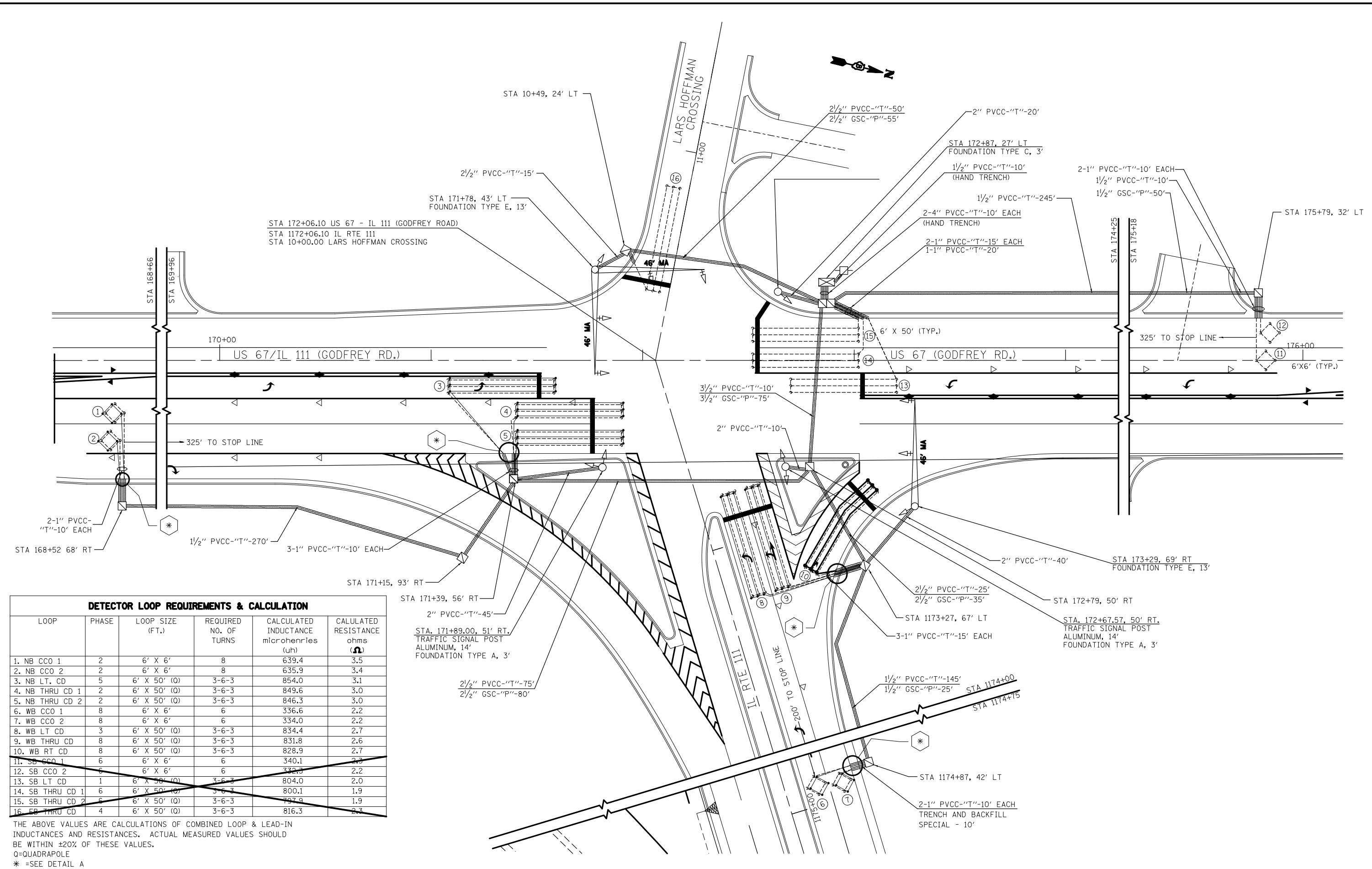
1. DRILL OUT PAVEMENT SEALANT AND CLEAN EXISTING CONDUIT.
2. REMOVE EXISTING DETECTOR LOOP WIRES TO HANDHOLE OR GULFBOX.
3. INSTALL NEW LOOP LEAD-IN WIRES IN EXISTING CONDUIT.
4. SPLICE NEW DETECTOR LOOP WIRES TO EXISTING LOOP LEAD-IN CABLE IN HANDHOLE OR GULFBOX.
5. FILL HOLE WITH APPROVED SEALER, PREVENT SEALER FROM ENTERING INTO CONDUIT.
6. LOCATING UNDERGROUND CABLE WILL BE PAID FOR SEPARATELY.

NOT A PAY ITEM. THE COST OF THIS WORK SHALL BE INCLUDED IN THE PAY ITEM "DETECTOR LOOP REPLACEMENT"

DETECTOR LOOP REPLACEMENT LEGEND

- ◻ EX. HANDHOLE
- ◊ EX. DETECTOR LOOP
- ◻ EX. TRAFFIC SIGNAL CONTROLLER
- EXISTING CONDUIT
- ◊ PROPOSED DETECTOR LOOP

FILE NAME =	USER NAME = MILLERRAJ	DESIGNED -	REVISED -	STATE OF ILLINOIS DEPARTMENT OF TRANSPORTATION	DETECTOR LOOP REPLACEMENT PLAN GENERAL NOTES, SCHEDULE OF QUANTITIES, DETAIL AND LEGEND	FAP RTE.	SECTION	COUNTY	TOTAL SHEETS	SHEET NO.	
pw:\planroom.dot.illinois.gov\PIDOT\Documents\IDOT Offices\District 8\Projects\D876N72\ADD\CA\Sheets\D876N72-sht-cover.dgn						10	129R5-5	MADISON	14	13	
PLOT SCALE = 100.0000' / 1in.	CHECKED -	REVISED -	SCALE: NTS			SHEET NO. 1 OF 2 SHEETS	STA.	TO STA.	CONTRACT NO. 76N72		
PLOT DATE = 3/10/2021	DATE -	REVISED -	FED. ROAD DIST. NO. ILLINOIS FED. AID PROJECT								



DETECTOR LOOP REQUIREMENTS & CALCULATION

LOOP	PHASE	LOOP SIZE (FT.)	REQUIRED NO. OF TURNS	CALCULATED INDUCTANCE microhenries (uh)	CALCULATED RESISTANCE ohms (Ω)
1. NB CCO 1	2	6' X 6'	8	639.4	3.5
2. NB CCO 2	2	6' X 6'	8	635.9	3.4
3. NB LT. CD	5	6' X 50' (Q)	3-6-3	854.0	3.1
4. NB THRU CD 1	2	6' X 50' (Q)	3-6-3	849.6	3.0
5. NB THRU CD 2	2	6' X 50' (Q)	3-6-3	846.3	3.0
6. WB CCO 1	8	6' X 6'	6	336.6	2.2
7. WB CCO 2	8	6' X 6'	6	334.0	2.2
8. WB LT CD	3	6' X 50' (Q)	3-6-3	834.4	2.7
9. WB THRU CD	8	6' X 50' (Q)	3-6-3	831.8	2.6
10. WB RT CD	8	6' X 50' (Q)	3-6-3	828.9	2.7
11. SB CCO 1	6	6' X 6'	6	340.1	2.3
12. SB CCO 2	6	6' X 6'	6	332.3	2.2
13. SB LT CD	1	6' X 50' (Q)	3-6-3	804.0	2.0
14. SB THRU CD 1	6	6' X 50' (Q)	3-6-3	800.1	1.9
15. SB THRU CD 2	6	6' X 50' (Q)	3-6-3	797.9	1.9
16. SB THRU CD	4	6' X 50' (Q)	3-6-3	816.3	2.3

THE ABOVE VALUES ARE CALCULATIONS OF COMBINED LOOP & LEAD-IN INDUCTANCES AND RESISTANCES. ACTUAL MEASURED VALUES SHOULD BE WITHIN ±20% OF THESE VALUES.

Q=QUADRAPOLE

* =SEE DETAIL A

**STATE OF ILLINOIS
DEPARTMENT OF TRANSPORTATION**

**DETECTOR LOOP REPLACEMENT PLAN
LARS HOFFMAN CROSSING (IL-111)
AND US 67 (GODFREY RD.)**

FILE NAME =	USER NAME = MILLERRAJ	DESIGNED -	REVISED -
		CHECKED -	REVISED -
		DATE -	REVISED -

SCALE: NTS	SHEET NO. 2 OF 2 SHEETS	STA.	TO STA.
FAP RTE.	SECTION	COUNTY	TOTAL SHEETS
10	129R5-5	MADISON	14
CONTRACT NO. 76N72			
FED. ROAD DIST. NO. ILLINOIS FED. AID PROJECT			