

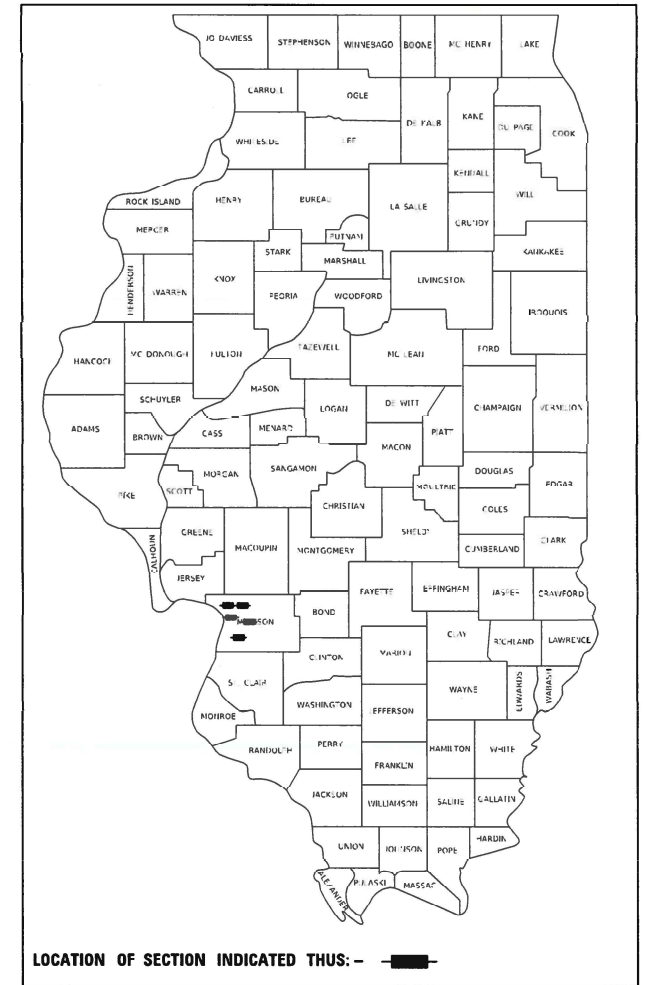
STATE OF ILLINOIS
DEPARTMENT OF TRANSPORTATION

F.A. RTE.	SECTION	COUNTY	TOTAL SHEETS	SHEET NO.
Var.	(1,202,133,6-2,4)TS-1	MADISON	15	1
		ILLINOIS	CONTRACT NO. 76P52	

PROPOSED HIGHWAY PLANS

VARIOUS ROUTES SECTION (1,202,133,6-2,4)TS-1 PROJECT NHPP-STP-TBX6(306) TRAFFIC SIGNAL CABINET REPLACEMENT MADISON COUNTY

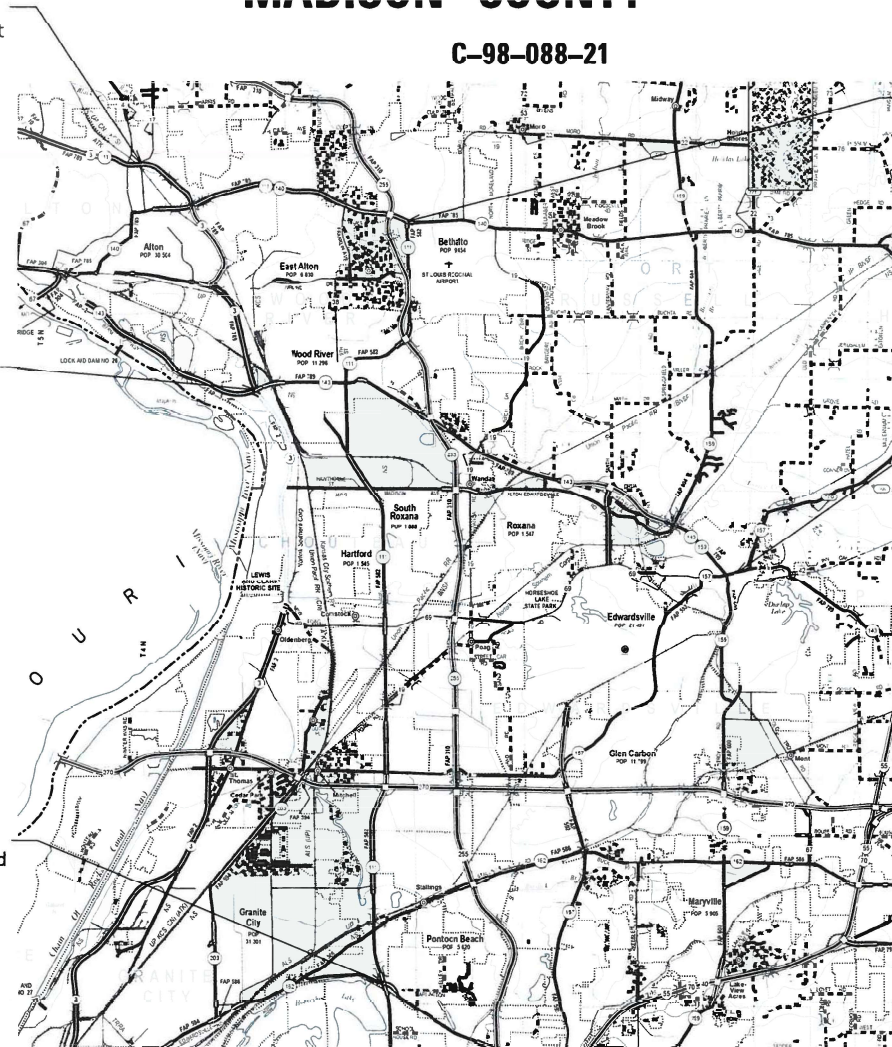
D-98-057-21



INDEX OF SHEETS

- 1 COVER SHEET
- 2 GENERAL NOTES & HIGHWAY STANDARDS
- 3 SUMMARY OF QUANTITIES
- 4 SCHEDULE OF QUANTITIES
- LOCATION 1 - IL 3 & IL 143
- 5-6 TRAFFIC SIGNAL PLANS
- 7 TRAFFIC WIRING DIAGRAM
- LOCATION 2 - IL 143/157 & BUCHANAN ST.
- 8 TRAFFIC SIGNAL PLANS
- 9 TRAFFIC WIRING DIAGRAM
- LOCATION 3 - IL 111 & IL 140, E. JCT.
- 10 TRAFFIC SIGNAL PLANS
- 11 TRAFFIC WIRING DIAGRAM
- LOCATION 4 - IL 3/111 & SEMINARY ST.
- 12 TRAFFIC SIGNAL PLANS
- 13 TRAFFIC WIRING DIAGRAM
- LOCATION 5 - IL 111 & HORSESHOE LAKE RD.
- 14 TRAFFIC SIGNAL PLANS
- 15 TRAFFIC WIRING DIAGRAM

Location 4
IL 3 /IL 111 & Seminary St
Alton, IL

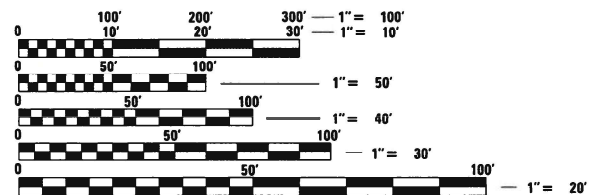


Location 3
IL 111 & IL 140, E. Jct
Bethalto, IL

Location 1
IL 3 & IL 143
Wood River, IL

Location 2
IL 143 /IL 157 & Buchanan St.
Edwardsville, IL

Location 5
IL 111 & Horseshoe Lake Rd
Pontoon Beach, IL



FULL SIZE PLANS HAVE BEEN PREPARED USING STANDARD ENGINEERING SCALES. REDUCED SIZED PLANS WILL NOT CONFORM TO STANDARD SCALES. IN MAKING MEASUREMENTS ON REDUCED PLANS, THE ABOVE SCALES MAY BE USED.

J.U.L.I.E.
JOINT UTILITY LOCATION INFORMATION FOR EXCAVATORS
1-800-892-0123
OR 811

PROJECT ENGINEER: HERVE GELIN (618) 346-3179
PROJECT MANAGER: MICHAEL PRESTON (618) 346-3143

CONTRACT NO. 76P52

GROSS LENGTH = x.xx FT. = x.xxx MILE
NET LENGTH = x.xx FT. = x.xxx MILE

STATE OF ILLINOIS
DEPARTMENT OF TRANSPORTATION

SUBMITTED March 18, 2021
Kath Roberts
REGIONAL ENGINEER

May 7, 2021
Joe A. Elk
ENGINEER OF DESIGN AND ENVIRONMENT

May 7, 2021
James J. Jun
DIRECTOR OF HIGHWAYS PROJECT IMPLEMENTATION 13

PRINTED BY THE AUTHORITY
OF THE STATE OF ILLINOIS

SCHEDULE OF QUANTITIES

LOCATION	FULL-ACTUATED CONTROLLER AND TYPE IV CABINET	UNITERRUPTABLE POWER SUPPLY, EXTENDED	ELECTRIC CABLE IN CONDUIT SIGNAL NO. 14 7C	SIGNAL HEAD, POLYCARBONATE, LED, 1-FACE, 5-SECTION, BRACKET MOUNTED	INDUCTIVE LOOP DETECTOR	REMOVE EXISTING TRAFFIC SIGNAL EQUIPMENT	REMOVE EXISTING TRAFFIC CONTROLLER AND CABINET
	EACH	EACH	FOOT	EACH	EACH	EACH	EACH
IL 3 & IL 143	1	1	0	0	28	1	1
IL 143 / 157 & BUCHANAN ST.	1	0	0	0	16	1	1
IL 111 & IL 140	1	0	0	0	20	1	1
IL 3 / 111 & SEMINARY ST.	1	0	300	1	16	1	1
IL 111 & HORSESHOE LAKE RD.	1	0	0	0	22	1	1
TOTAL	5	1	300	1	102	5	5
ROUNDED			300				

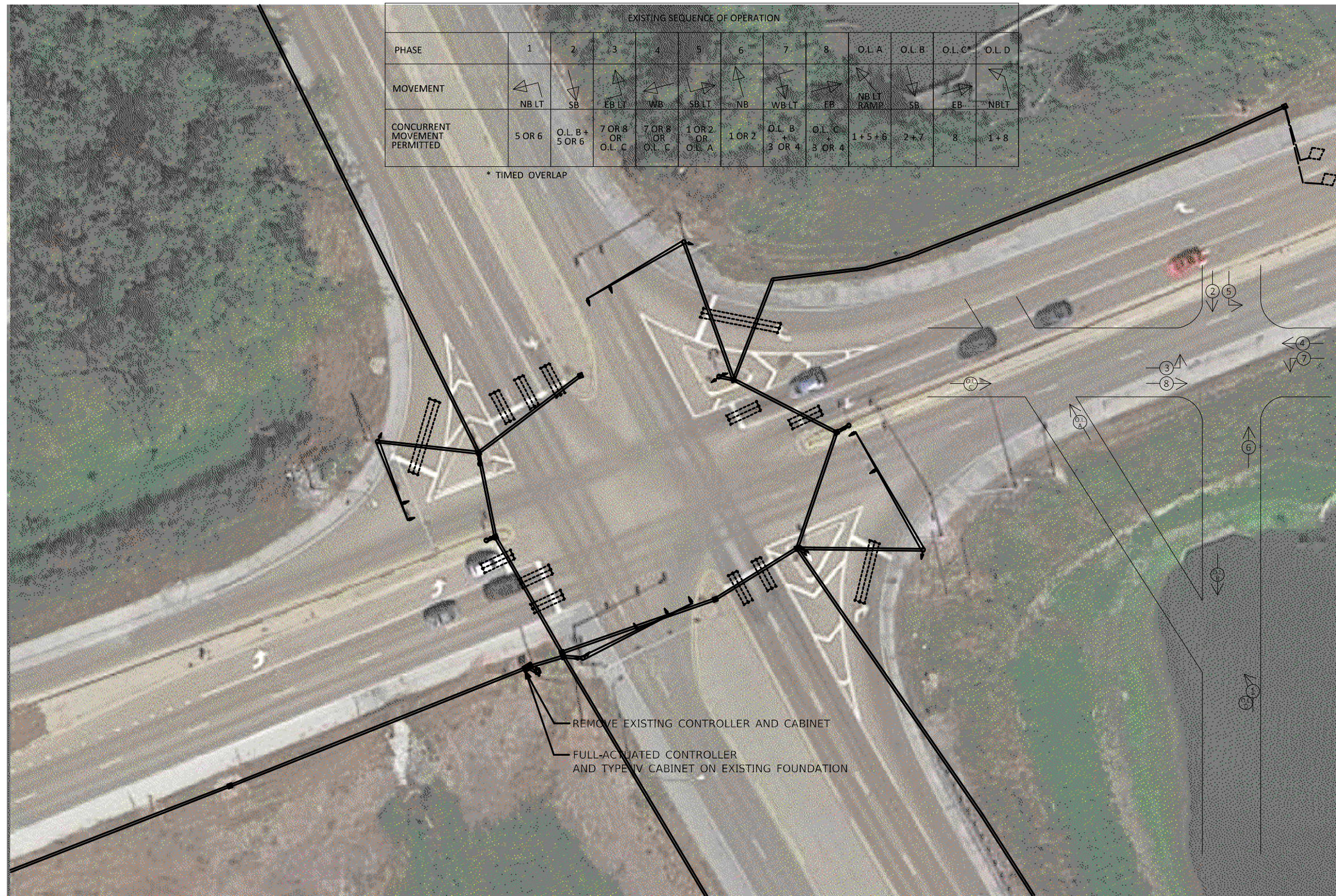
MODEL: I:\MODEL\NAME
 FILE NAME: P:\p1\m1000.mxd; I:\Illinois.gov\PWDOT\Documents\DOT_Offices\District 8\Projects\Operations\CAD\Drawings\Schedule\Schedule.dgn

USER NAME = hopkindsdp	DESIGNED - _____	REVISED - _____
	DRAWN - _____	REVISED - _____
PLOT SCALE = 100,0000' / in.	CHECKED - _____	REVISED - _____
PLOT DATE = 3/9/2021	DATE - _____	REVISED - _____

**STATE OF ILLINOIS
DEPARTMENT OF TRANSPORTATION**

SCHEDULE OF QUANTITIES			
SCALE: _____	SHEET _____	OF _____	SHEETS
STA. _____	TO STA. _____		

F.A. RTE.	SECTION	COUNTY	TOTAL SHEETS	SHEET NO.
Var.	(1,202,133.6-2.4)TS-1	Madison	15	4
			CONTRACT NO. 76P52	
			ILLINOIS FED. AID PROJECT	



EXISTING SEQUENCE OF OPERATION												
PHASE	1	2	3	4	5	6	7	8	O.L.A	O.L.B	O.L.C	O.L.D
MOVEMENT	NB LT	SB	EB LT	WB	SBLT	NB	WBLT	EB	NBLT RAMP	SB	EB	NBLT
CONCURRENT MOVEMENT PERMITTED	5 OR 6	O.L.B + 5 OR 6	7 OR 8 OR O.L.C	7 OR 8 OR O.L.C	1 OR 2 OR O.L.A	1 OR 2	O.L.B + 3 OR 4	O.L.C + 3 OR 4	1+5+6	2+7	8	1+8

* TIMED OVERLAP

REMOVE EXISTING CONTROLLER AND CABINET
 FULL-ACTUATED CONTROLLER AND TYPE IV CABINET ON EXISTING FOUNDATION

MODEL: I:\MODEL\MHFE
 FILE NAME: p:\data\mcom\m.dat\illinois\pwr\PIWIDOT\Documents\DOT_Offices\District 8\Projects\Operations\CAD\data\CAD\Sheet\Signal\Cabinet_Bach\cmmnt1.dgn

USER NAME = hopkinsdp	DESIGNED - _____	REVISED - _____
	DRAWN - _____	REVISED - _____
PLOT SCALE = 100,0000' / in.	CHECKED - _____	REVISED - _____
PLOT DATE = 3/11/2021	DATE - _____	REVISED - _____

**STATE OF ILLINOIS
 DEPARTMENT OF TRANSPORTATION**

Signal Plans	
IL 3 & IL 143	
SCALE: _____	SHEET _____ OF _____ SHEETS
STA. _____	TO STA. _____

F.A. RTE.	SECTION	COUNTY	TOTAL SHEETS	SHEET NO.
Var.	(1,202,133.6-2.4)TS-1	Madison	15	5
CONTRACT NO. 76P52				
ILLINOIS FED. AID PROJECT				

MODEL: \\MODEL\NAME
 FILE NAME: P:\admin\m.d.d\illinois.gov\PIWIDOT\Documents\DOT - Offices\District 8\Projects\Operations\CADD\at\CAD\Sheets\Signal\Cabinet_Replacement.dgn



USER NAME = hopkinsdp	DESIGNED - _____	REVISED - _____
	DRAWN - _____	REVISED - _____
PLOT SCALE = 100,0000' / in.	CHECKED - _____	REVISED - _____
PLOT DATE = 3/9/2021	DATE - _____	REVISED - _____

**STATE OF ILLINOIS
 DEPARTMENT OF TRANSPORTATION**

Signal Plans	
IL 3 & IL 143	
SCALE: _____	SHEET ____ OF ____ SHEETS STA. _____ TO STA. _____

F.A. RTE.	SECTION	COUNTY	TOTAL SHEETS	SHEET NO.
Var.	(1,202,133.6-2.4)TS-1	Madison	15	6
ILLINOIS FED. AID PROJECT			CONTRACT NO. 76P52	

MODEL: \\MODEL\MAME
 FILE NAME: P:\p14m100m.mxd;P:\WIDOT\Documents\DOT_Offices\Bartlett_B\Projects\Operations\CADD\Rail\CAD\Sheet\Sigrafin\Cabinet_Repair\comt1.dgn

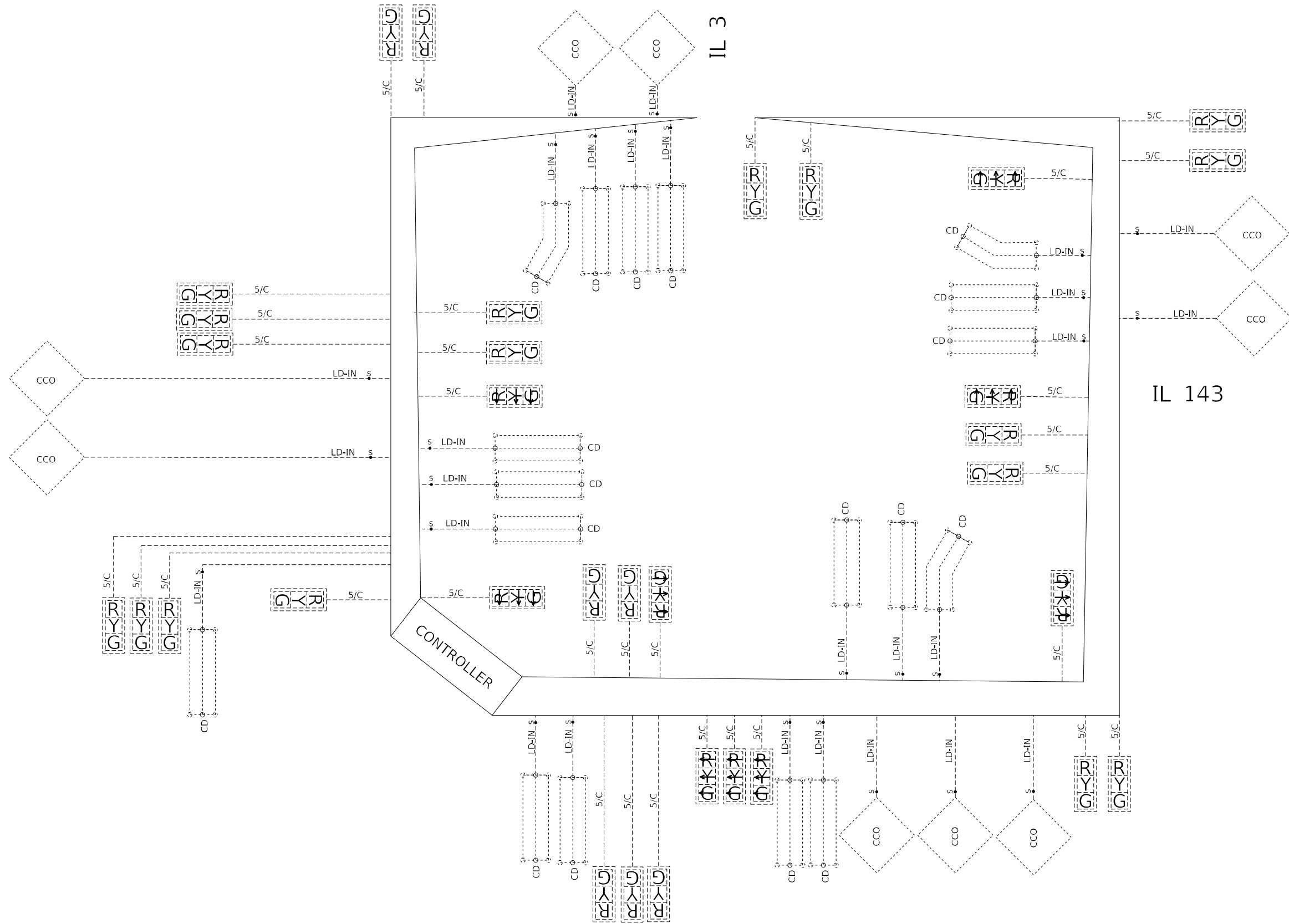
USER NAME = hopkinsdp	DESIGNED - _____	REVISED - _____
	DRAWN - _____	REVISED - _____
PLOT SCALE = 100,0000' / in.	CHECKED - _____	REVISED - _____
PLOT DATE = 3/9/2021	DATE - _____	REVISED - _____

**STATE OF ILLINOIS
 DEPARTMENT OF TRANSPORTATION**

**Wiring Diagram
 IL 3 & IL 143**

SCALE: _____ SHEET ____ OF ____ SHEETS STA. _____ TO STA. _____

F.A. RTE.	SECTION	COUNTY	TOTAL SHEETS	SHEET NO.
	(1,202,133.6-2.4)TS-1	Madison	15	7
ILLINOIS FED. AID PROJECT			CONTRACT NO. 76P52	



IL 3

IL 143



EXISTING SEQUENCE OF OPERATION								
PHASE	1	2	3	4	5	6	7	O.L.A
MOVEMENT	EB LT	WB	NB	SB	WB LT	EB	NOT USED	EB RT
CONCURRENT MOVEMENT PERMITTED	5 OR 6	5 OR 6	NONE	NONE	1 OR 2	1 OR 2		3

CIRCUITRY SHALL BE PROVIDED TO INHIBIT O.L.A. WHEN A PHASE 6 PEDESTRIAN ACTUATION IS RECEIVED. THE CONTRACTOR SHALL SUBMIT THE SPECIAL CIRCUITRY TO THE ENGINEER FOR APPROVAL.

MODEL: \\H001\NAMES... FILE: \\H001\NAMES... \Project\Operations\CAD\Drawings\CAD\Drawings\Signal\Cabinet_Bach.coment1.dgn

USER NAME = hopkinds	DESIGNED - _____	REVISED - _____
	DRAWN - _____	REVISED - _____
PLOT SCALE = 100,0000' / in.	CHECKED - _____	REVISED - _____
PLOT DATE = 3/11/2021	DATE - _____	REVISED - _____

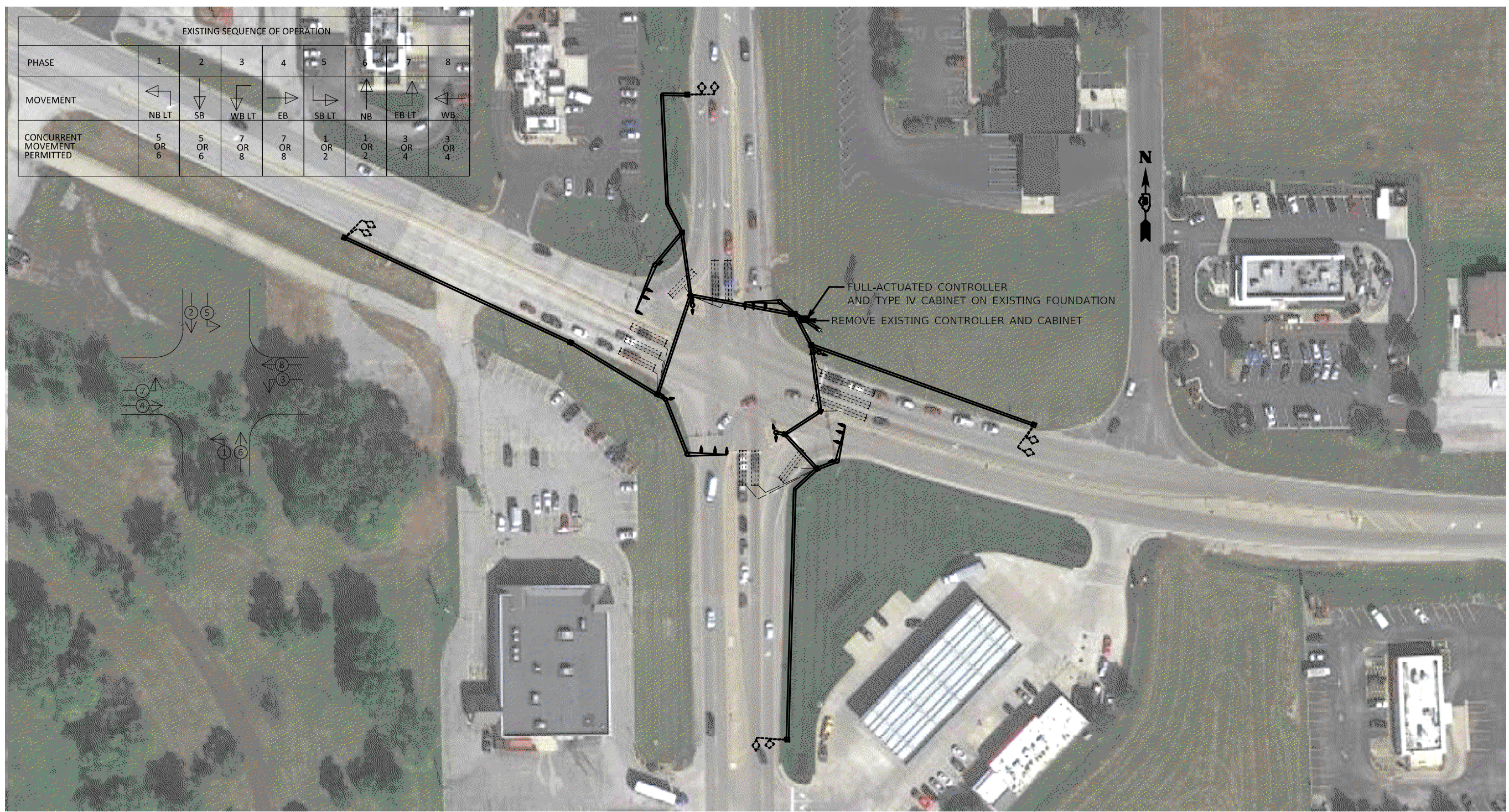
**STATE OF ILLINOIS
DEPARTMENT OF TRANSPORTATION**

**Signal Plans
IL 143 /IL 157 & Buchanan St.**

SCALE: _____ SHEET _____ OF _____ SHEETS STA. _____ TO STA. _____

F.A. RTE.	SECTION	COUNTY	TOTAL SHEETS	SHEET NO.
Var.	(1,202,133.6-2.4)TS-1	Madison	15	8
			CONTRACT NO. 76P52	
			ILLINOIS FED. AID PROJECT	

EXISTING SEQUENCE OF OPERATION								
PHASE	1	2	3	4	5	6	7	8
MOVEMENT								
	NB LT	SB	WB LT	EB	SB LT	NB	EB LT	WB
CONCURRENT MOVEMENT PERMITTED	5 OR 6	5 OR 6	7 OR 8	7 OR 8	1 OR 2	1 OR 2	3 OR 4	3 OR 4



MODEL: \\MODEL\NAME
 FILE NAME: \\path\to\file\name.dwg
 PROJECT: Operations\DOT - Office\District 8\Projects\Operations\CAD\Drawings\Signal\Cabinet - Backup\cont1.dwg

USER NAME = hopkinsdp	DESIGNED - _____	REVISED - _____
	DRAWN - _____	REVISED - _____
PLOT SCALE = 100,0000' / in.	CHECKED - _____	REVISED - _____
PLOT DATE = 3/11/2021	DATE - _____	REVISED - _____

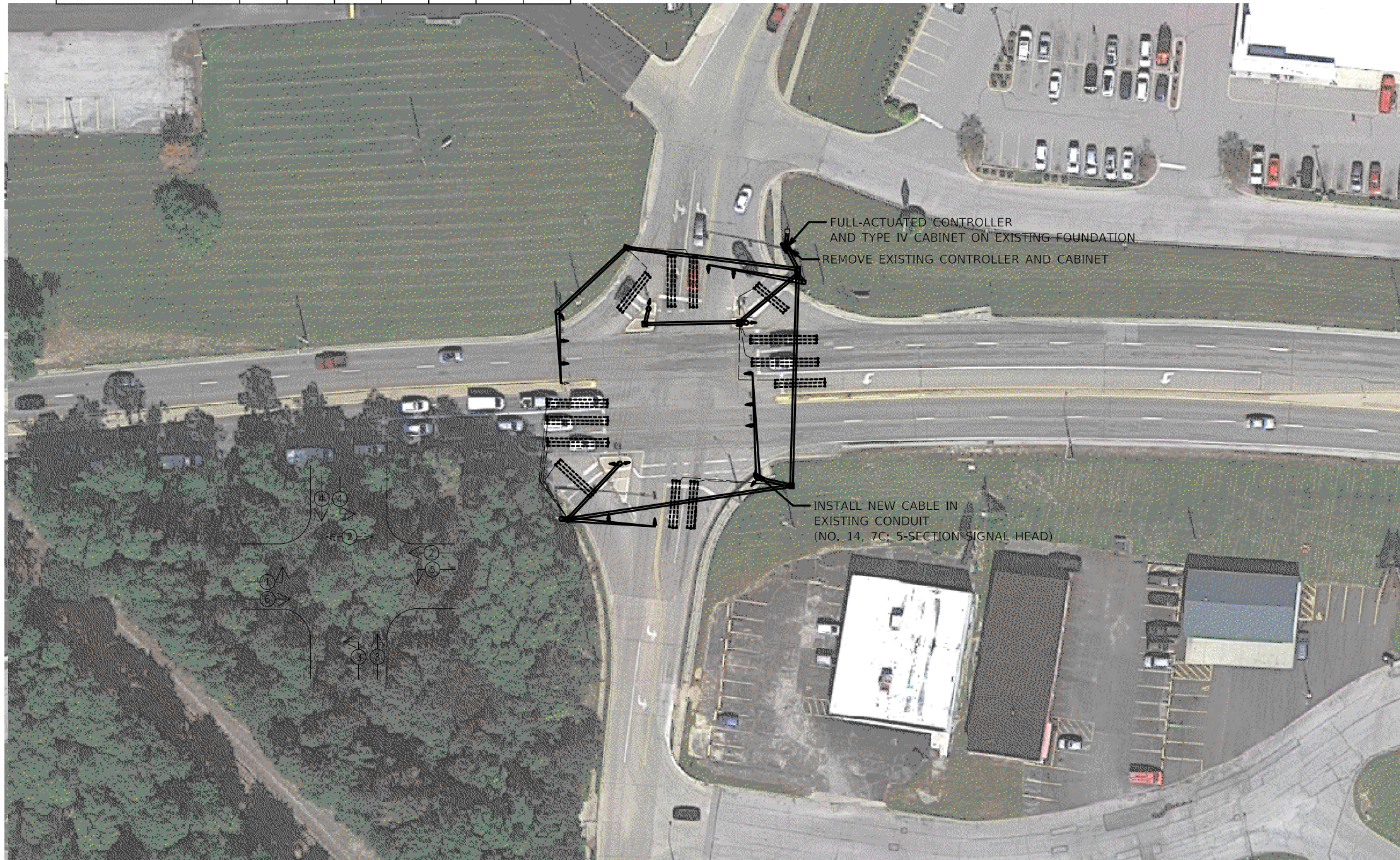
STATE OF ILLINOIS
DEPARTMENT OF TRANSPORTATION

Signal Plans
IL 111 & IL 140, E. Jct.

SCALE: _____ SHEET _____ OF _____ SHEETS STA. _____ TO STA. _____

F.A. RTE.	SECTION	COUNTY	TOTAL SHEETS	SHEET NO.
Var.	(1,202,133.6-2.4)TS-1	Madison	15	10
ILLINOIS FED. AID PROJECT			CONTRACT NO. 76P52	

EXISTING SEQUENCE OF OPERATION								
PHASE	1	2	3	4	5	6	7	8
MOVEMENT							NOT USED	NOT USED
CONCURRENT MOVEMENT PERMITTED	5 OR 6	5 OR 6	NONE	NONE	1 OR 2	1 OR 2	NOT USED	NOT USED



MODEL: \\MODEL\NAME
 FILE: \\NAME\PROJECT\Operations\DOT_Office\District_8\Projects\Operations\CAD\data\CAD\Sheet\Signal\Cabinet_Rep\Acct1.dwg

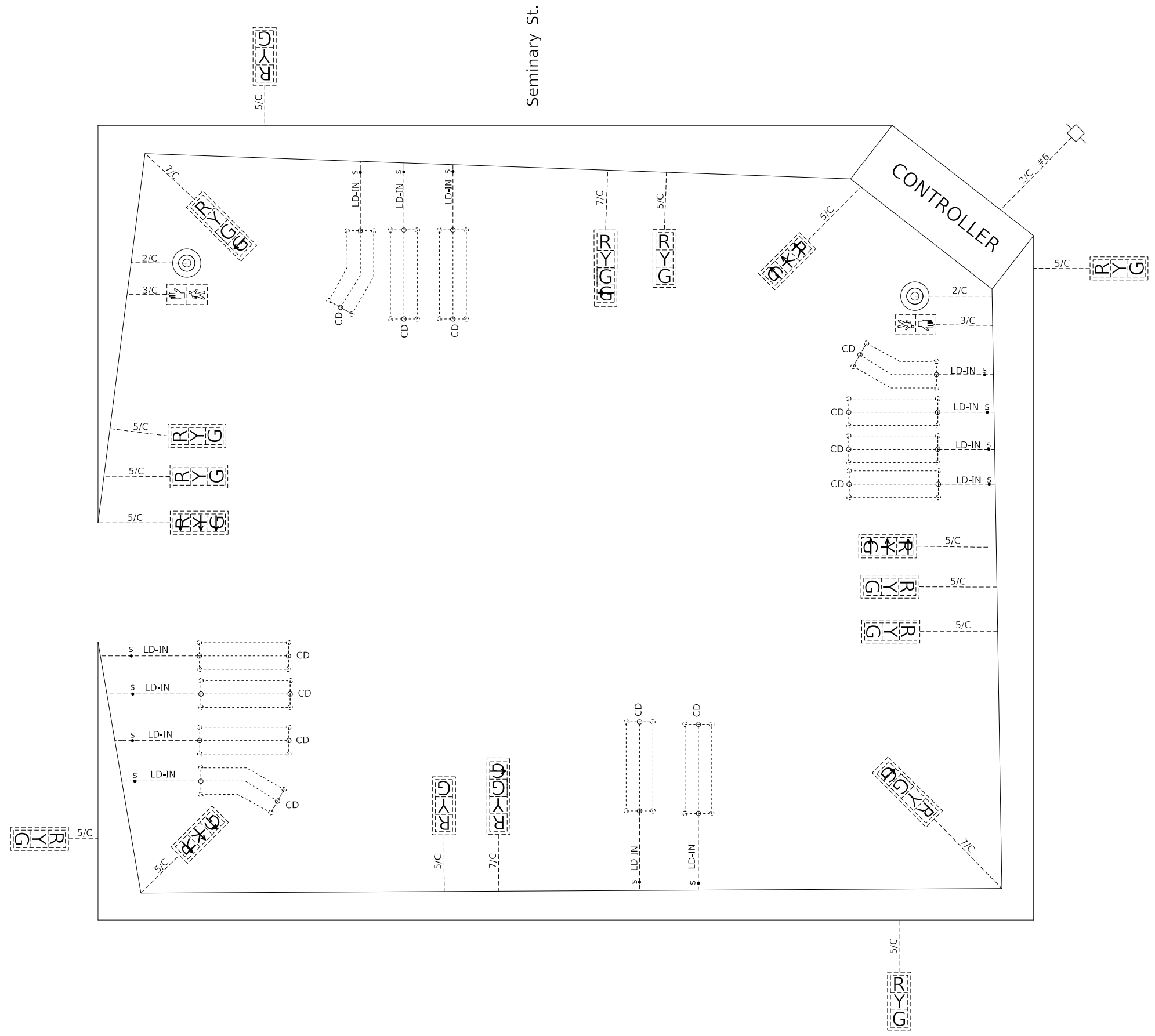
USER NAME = hopkindsj	DESIGNED - _____	REVISED - _____
	DRAWN - _____	REVISED - _____
PLOT SCALE = 100,0000' / in.	CHECKED - _____	REVISED - _____
PLOT DATE = 3/11/2021	DATE - _____	REVISED - _____

STATE OF ILLINOIS
DEPARTMENT OF TRANSPORTATION

Signal Plans			
IL 3 / IL 111 & Seminary St.			
SCALE: _____	SHEET _____	OF _____	SHEETS
STA. _____	TO STA. _____		

F.A. RTE. _____	SECTION _____	COUNTY _____	TOTAL SHEETS _____	SHEET NO. _____
Var. _____	(1,202,133.6-2.4)TS-1	Madison	15	12
			CONTRACT NO. 76P52	
		ILLINOIS	FED. AID PROJECT	

IL 3 / IL 111



MODEL: \\MODEL\NAME
FILE NAME: P:\pub\hmonm\dot\illinois.gov\PWIDOT\Documents\DOT_Offices\District 8\Projects\Operations\CADD\Signal\Cabinet\Cabinet_Replacement.dgn

USER NAME = hopkindsdp	DESIGNED - _____	REVISED - _____
	DRAWN - _____	REVISED - _____
PLOT SCALE = 100,0000' / in.	CHECKED - _____	REVISED - _____
PLOT DATE = 3/9/2021	DATE - _____	REVISED - _____

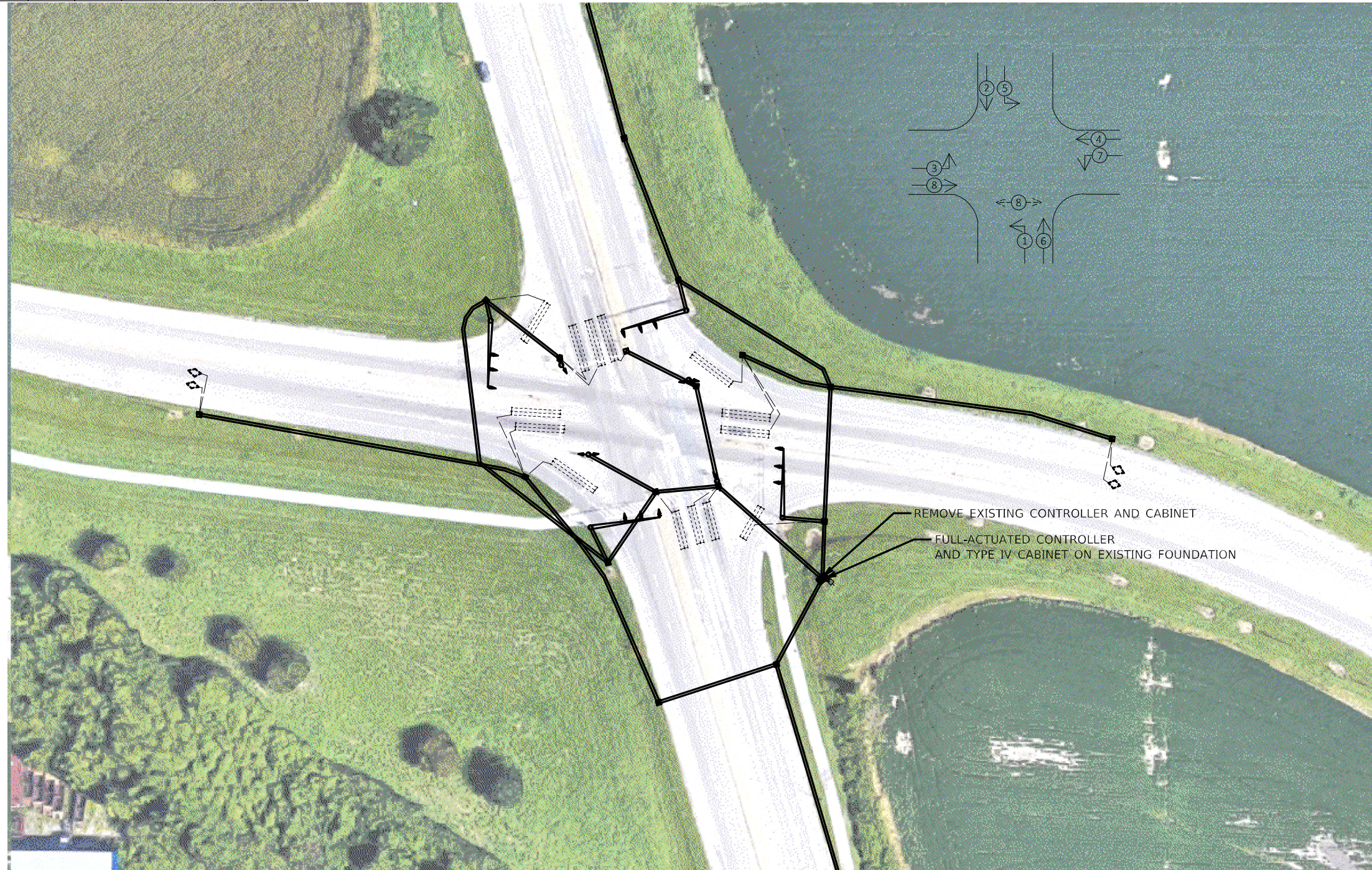
**STATE OF ILLINOIS
DEPARTMENT OF TRANSPORTATION**

Wiring Diagram
IL 3 / IL 111 & Seminary St.

SCALE: _____ SHEET ____ OF ____ SHEETS STA. _____ TO STA. _____

F.A. RTE.	SECTION	COUNTY	TOTAL SHEETS	SHEET NO.
Var.	(1,202,133,6-2,4)TS-1	Madison	15	13
CONTRACT NO. 76P52			ILLINOIS FED. AID PROJECT	

EXISTING SEQUENCE OF OPERATION								
PHASE	1	2	3	4	5	6	7	8
MOVEMENT								
	NB LT	SB	EB LT	WB	SB LT	NB	WB LT	EB
CONCURRENT MOVEMENT PERMITTED	5 OR 6	5 OR 6	7 OR 8	7 OR 8	1 OR 2	1 OR 2	3 OR 4	3 OR 4



MODEL: \\MODEL\NAME
 FILE NAME: \\path\to\file.dwg
 PROJECT: Operations\DOT Office\District 8\Projects\Operations\CAD\data\CAD\Sheet\SIGNAL\Cabinet_Replacement.dwg

USER NAME = hopkinds	DESIGNED - _____	REVISED - _____
	DRAWN - _____	REVISED - _____
PLOT SCALE = 100,0000' / in.	CHECKED - _____	REVISED - _____
PLOT DATE = 3/11/2021	DATE - _____	REVISED - _____

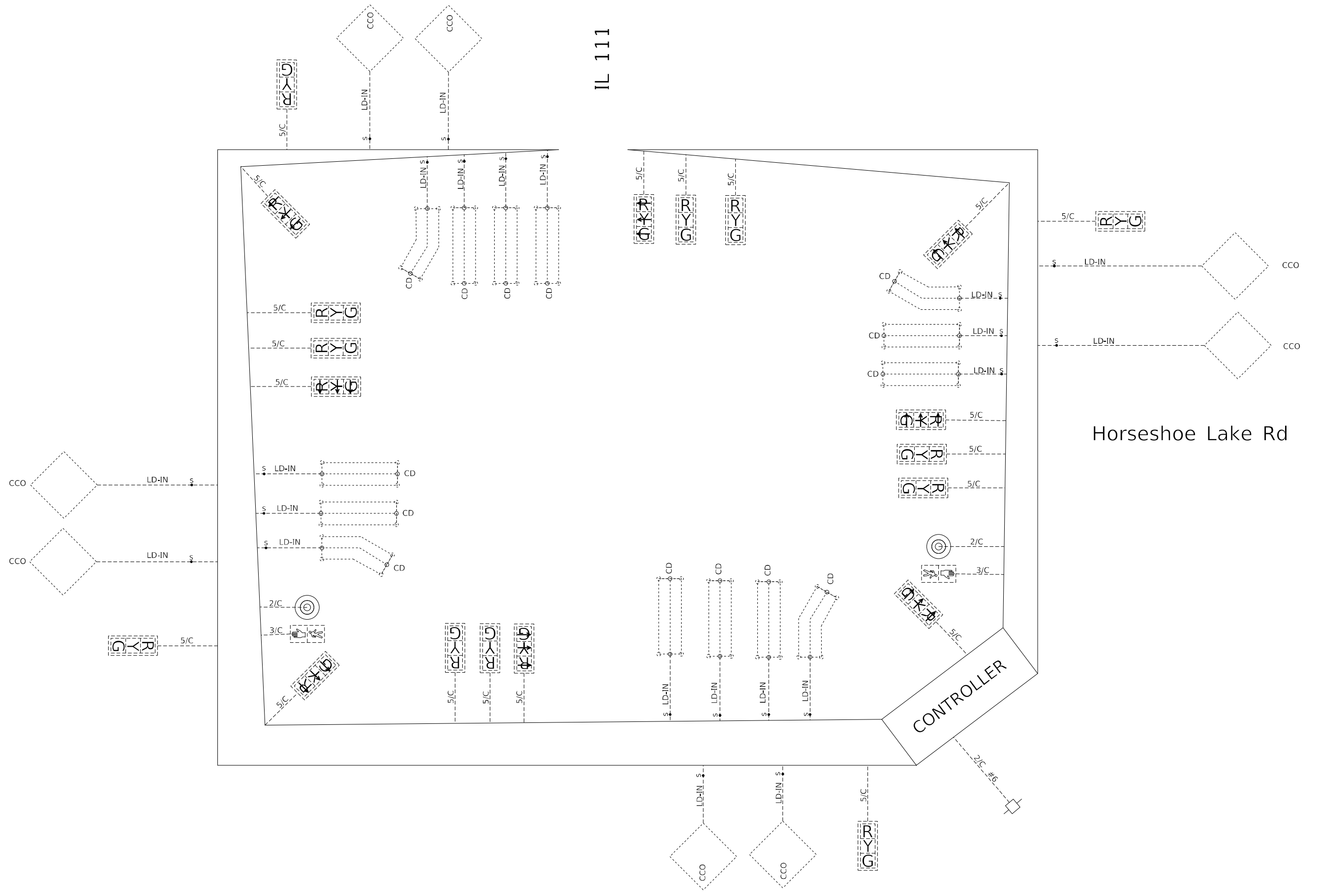
STATE OF ILLINOIS
DEPARTMENT OF TRANSPORTATION

Signal Plans
IL 111 & Horseshoe Lake Rd.

SCALE: _____ SHEET _____ OF _____ SHEETS STA. _____ TO STA. _____

F.A. RTE.	SECTION	COUNTY	TOTAL SHEETS	SHEET NO.
Var.	(1,202,133.6-2.4)TS-1	Madison	15	14
			CONTRACT NO. 76P52	
ILLINOIS FED. AID PROJECT				

MODEL: \\MODEL\NAME
 FILE NAME: P:\pub\homerom.mad.illinois.gov\PWIDOT\Documents\IBDOT_Offices\District 8\Projects\Operations\CADD\data\CAD\Sheet\Sigrafin\Cabinet_Repair\comnt1.dgn



USER NAME = hopkindsdp	DESIGNED - _____	REVISED - _____
DRAWN - _____	REVISIONS - _____	REVISIONS - _____
PLOT SCALE = 100,0000' / in.	CHECKED - _____	REVISIONS - _____
PLOT DATE = 3/9/2021	DATE - _____	REVISIONS - _____

**STATE OF ILLINOIS
 DEPARTMENT OF TRANSPORTATION**

**Wiring Diagram
 IL 111 & Horseshoe Lake Rd**

SCALE: _____ SHEET _____ OF _____ SHEETS STA. _____ TO STA. _____

F.A. RTE.	SECTION	COUNTY	TOTAL SHEETS	SHEET NO.
Var.	(1,202,133.6-2.4)TS-1	Madison	15	15
CONTRACT NO. 76P52			ILLINOIS FED. AID PROJECT	