

STATE OF ILLINOIS
DEPARTMENT OF TRANSPORTATION

F.A.P. RTE.	SECTION	COUNTY	TOTAL SHEETS	SHEET NO.
347	2020-201-CVL	KANE	20	1
		ILLINOIS	CONTRACT NO. 62M73	

FOR INDEX OF SHEETS, SEE SHEET NO. 2

THIS PROJECT IS LOCATED WITHIN VILLAGE OF CAMPTON HILLS AND UNINCORPORATED KANE COUNTY.

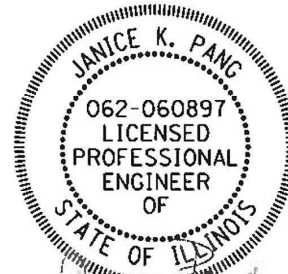
PROPOSED HIGHWAY PLANS

FAP ROUTE 347 (IL 38)
IL 38 OVER MILL CREEK
SECTION 2020-201-CVL
CULVERT REPAIRS
KANE COUNTY

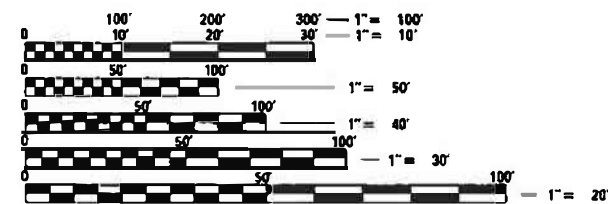
C-91-400-20

TRAFFIC DATA

IL 38:
FUNCTIONAL CLASSIFICATION:
OTHER PRINCIPAL ARTERIAL
ADT (2019) = 12,800
P.V. = 91% S.U. = 5% M.U. = 4%
POSTED SPEED LIMIT = 55 MPH



DATE SIGNED: 03-02-21
EXP. DATE: 11-30-21



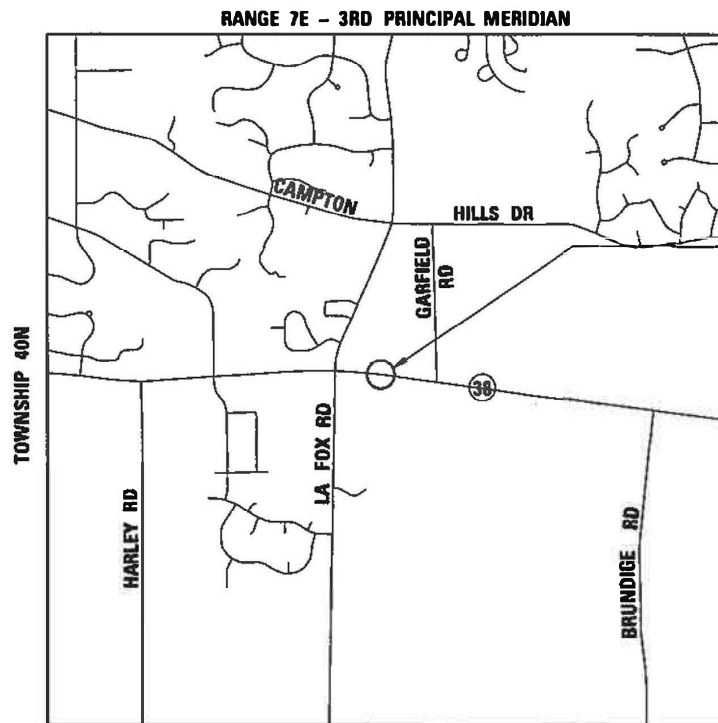
FULL SIZE PLANS HAVE BEEN PREPARED USING STANDARD ENGINEERING SCALES. REDUCED SIZED PLANS WILL NOT CONFORM TO STANDARD SCALES. IN MAKING MEASUREMENTS ON REDUCED PLANS, THE ABOVE SCALES MAY BE USED.

J.U.L.I.E.
JOINT UTILITY LOCATION INFORMATION FOR EXCAVATORS
1-800-892-0123
OR 811

PROJECT ENGINEER: PRAVEEN KAINI, P.E. (847) 705-4237
PROJECT MANAGER: J. ALAIN MIDY, P.E. (847) 221-3056

CONTRACT NO. 62M73

LOCATION MAP
(NOT TO SCALE)



CULVERT REPAIR
SN: 045-0075
BEGIN PROJECT:
STA. 1002 + 14
END PROJECT:
STA. 1006 + 02

GROSS LENGTH = 388 FT. = 0.073 MILE
NET LENGTH = 37.5 FT. = 0.007 MILE

CHASTAIN & ASSOCIATES LLC
CONSULTING ENGINEERS
SERVICI. | SOLUCIONES | COMMITMENT

STATE OF ILLINOIS
DEPARTMENT OF TRANSPORTATION

SUBMITTED March 9, 2021
Jose Prios / CRB
REGIONAL ENGINEER

May 7, 2021 [Signature]
ENGINEER OF DESIGN AND ENVIRONMENT

May 7, 2021 [Signature]
DIRECTOR OF HIGHWAYS PROJECT IMPLEMENTATION

PRINTED BY THE AUTHORITY
OF THE STATE OF ILLINOIS

INDEX OF SHEETS

SHEET NO.	DESCRIPTION
1	COVER SHEET
2	INDEX OF SHEETS, STATE STANDARDS AND GENERAL NOTES
3-6	SUMMARY OF QUANTITIES
7	ROADWAY PLAN
8-10	MAINTENANCE OF TRAFFIC PLAN
11	PAVEMENT MARKING PLAN
12	RESTORATION PLAN
13-15	STRUCTURAL PLANS
16-20	DISTRICT ONE DETAILS

STANDARD NO.	DESCRIPTION
BD-55	RUMBLE STRIPS FOR CENTERLINE, NON-FREEWAY
TC-10	TRAFFIC CONTROL AND PROTECTION FOR SIDE ROADS, INTERSECTIONS AND DRIVEWAYS
TC-11	RAISED REFLECTIVE PAVEMENT MARKERS (SNOW PLOW RESISTANT)
TC-13	DISTRICT ONE TYPICAL PAVEMENT MARKINGS
TC-22	ARTERIAL ROAD INFORMATION SIGN

HIGHWAY STANDARDS

STANDARD NO.	DESCRIPTION
280001-07	TEMPORARY EROSION CONTROL SYSTEMS
630201-07	PCC/HMA STABILIZATION AT STEEL PLATE BEAM GUARDRAIL
701001-02	OFF-RD OPERATIONS, 2L, 2W, MORE THAN 15' (4.5 M) AWAY
701006-05	OFF-ROAD OPERATIONS, 2L, 2W, 15' TO 24" FROM PAVEMENT EDGE
701011-04	OFF-ROAD MOVING OPERATIONS, 2L, 2W, DAY ONLY
701301-04	LANE CLOSURE, 2L, 2W, SHORT TIME OPERATIONS
701311-03	LANE CLOSURE, 2L, 2W, SLOW MOVING OPERATIONS DAY ONLY
701901-08	TRAFFIC CONTROL DEVICES
704001-08	TEMPORARY CONCRETE BARRIER

GENERAL NOTES

- BEFORE STARTING ANY EXCAVATION, THE CONTRACTOR SHALL CALL "JULIE" AT (800) 892-0123 OR 811 FOR FIELD LOCATIONS OF BURIED ELECTRIC, TELEPHONE, AND GAS FACILITIES. (48 HOURS NOTIFICATION REQUIRED)
- NO CONSTRUCTION SHALL BEGIN UNTIL ALL PROPER TEMPORARY SIGNS AND BARRICADES HAVE BEEN INSTALLED.
- THE CONTRACTOR SHALL COORDINATE CONSTRUCTION ACTIVITIES WITH UTILITY COMPANIES AND KANE COUNTY.
- THE CONTRACTOR SHALL BE RESPONSIBLE FOR THE PROTECTION OF ALL UNDERGROUND OR SURFACE UTILITIES EVEN THOUGH THEY MAY NOT BE SHOWN ON PLANS. ANY UTILITY THAT IS DAMAGED DURING CONSTRUCTION SHALL BE REPLACED TO THE SATISFACTION OF THE ENGINEER AT THE CONTRACTOR'S OWN EXPENSE.
- THE CONTRACTOR WILL NOT BE ALLOWED TO SET UP A YARD OR FIELD OFFICE ON STATE PROPERTY WITHOUT WRITTEN PERMISSION FROM THE DEPARTMENT.
- IT SHALL BE THE CONTRACTOR'S RESPONSIBILITY TO VERIFY ALL DIMENSIONS AND CONDITIONS EXISTING IN THE FIELD PRIOR TO CONSTRUCTION AND ORDERING OF MATERIALS.
- DO NOT SCALE PLANS FOR CONSTRUCTION DIMENSIONS.
- THE CONTRACTOR WILL ASSUME RESPONSIBILITY FOR MAINTENANCE OF ALL SOIL EROSION AND SEDIMENT CONTROL (ESC) DURING CONSTRUCTION.
- THE CONTRACTOR SHALL CHECK ALL ESC MEASURES WEEKLY AND AFTER EACH RAINFALL. 0.5 INCHES OR GREATER IN A 24 HOUR PERIOD, OR EQUIVALENT SNOWFALL. ADDITIONALLY DURING WINTER MONTHS, ALL MEASURES SHOULD BE CHECKED BY THE CONTRACTOR AFTER EACH SIGNIFICANT SNOW MELT.
- ALL ESC MEASURES WILL BE MAINTAINED IN ACCORDANCE WITH THE IDOT EROSION AND SEDIMENT CONTROL FIELD GUIDE FOR CONSTRUCTION INSPECTION.
- SILT FENCE SHOULD ONLY BE USED AS PERIMETER EROSION BARRIER (PEB) IN AREAS WHERE THE WORK AREA IS HIGHER THAN THE PERIMETER. THE USE OF SILT FENCE AT THE TOP OF THE SLOPE/ELEVATIONS HIGHER THAN THE WORK AREA SHOULD ALWAYS BE AVOIDED.
- THE CONTRACTOR IS RESPONSIBLE FOR RETURNING ALL AREAS AFFECTED BY EQUIPMENT OR LABORERS TO EXISTING CONDITIONS. THE CONTRACTOR IS ALSO RESPONSIBLE FOR PROTECTING ALL NEW WORK UNTIL COMPLETION OF THIS CONTRACT.
- THE CONTRACTOR SHALL CONTACT THE DISTRICT ONE TRAFFIC CONTROL SUPERVISOR AT KANNAN-HOSADURGA@ILLINOIS.GOV, A MINIMUM OF 72 HOURS IN ADVANCE OF BEGINNING WORK.
- THE ENGINEER SHALL CONTACT WALTER CZARNY, IDOT'S AREA TRAFFIC FIELD ENGINEER, VIA E-MAIL AT WALTER.CZARNY@ILLINOIS.GOV A MINIMUM OF TWO (2) WEEKS PRIOR TO THE PLACEMENT OF PERMANENT PAVEMENT MARKINGS.
- BEFORE BEGINNING ANY WORK, THE CONTRACTOR SHALL RETAIN AND RECORD FOR FUTURE REFERENCE, ALL EXISTING PAVMENT MARKING LINES AND RAISED REFLECTIVE PAVEMENT MARKERS IN ORDER THAT THESE LOCATIONS CAN BE RE-ESTABLISHED FOR STRIPING EXACT LOCATIONS OF ALL PAVEMENT MARKINGS SHALL BE AS DIRECTED BY THE ENGINEER.
- ALL DAMAGE TO EXISTING PAVEMENT MARKINGS OR RAISED REFLECTIVE PAVMENT MARKERS OUTSIDE THE REMOVAL LINE SHOWN ON THE PLANS SHALL BE REPLACED AT NO ADDITIONAL COST TO THE DEPARTMENT.

MIXTURES TABLE

HOT-MIX ASPHALT MIXTURE REQUIREMENTS			
OPERATION	MIXTURE TYPE	AIR VOIDS @ NDES	QUALITY MANAGEMENT PROGRAM (QMP)
HMA STABILIZATION 6" AT STEEL PLATE BEAM GUARDRAIL	HMA BINDER COURSE, IL-19.0, N70, 6"	4% @ 70 GYR.	QC/QA
RUMBLE STRIP REMOVAL	HMA SURFACE COURSE, IL-9.5, MIX "D", N70, 1½"	4% @ 70 GYR.	QC/QA
QMP DESIGNATIONS: QUALITY CONTROL/QUALITY ASSURANCE (QC/QA):			

NOTES:

- THE UNIT WEIGHT USED TO CALCULATE ALL HMA SURFACE MIXTURE QUANTITIES IS 112 LBS/SQ YD/IN.
- THE "AC TYPE" FOR POLYMERIZED HMA MIXES SHALL BE "SBS/SBR PG 76-22" AND FOR NON -POLYMERIZED HMA THE "AC TYPE" SHALL BE "PG 64-22" UNLESS MODIFIED BY DISTRICT ONE SPECIAL PROVISIONS.
- FOR USE OF RECYCLED MATERIALS SEE SPECIAL PROVISIONS.
- QUALITY MANAGEMENT PROGRAM (QMP) IDENTIFIES THE PARTICULAR QUALITY CONTROL SPECIFICATION THAT APPLIES TO THE HMA MIXTURE.

MODEL: Default; FILE NAME: I:\006\Work Order #20\CAD\Drawings\162M73-CHC-contract.dwg

CODE NO.	ITEM	UNIT	TOTAL QUANTITY URBAN	CONSTRUCTION CODE
				100% STATE
				STRUCTURE
				0013
				045-0075
21101625	TOPSOIL FURNISH AND PLACE, 6"	SQ YD	1725	1725
25000210	SEEDING, CLASS 2A	ACRE	0.07	0.07
25000310	SEEDING, CLASS 4	ACRE	0.29	0.29
25000400	NITROGEN FERTILIZER NUTRIENT	POUND	33	33
25000500	PHOSPHORUS FERTILIZER NUTRIENT	POUND	33	33
25000600	POTASSIUM FERTILIZER NUTRIENT	POUND	33	33
25100630	EROSION CONTROL BLANKET	SQ YD	1725	1725
28000400	PERIMETER EROSION BARRIER	FOOT	694	694
28000510	INLET FILTERS	EACH	2	2
40604062	HOT-MIX ASPHALT SURFACE COURSE, IL-9.5, MIX "D", N70	TON	23	23
44000155	HOT-MIX ASPHALT SURFACE REMOVAL, 1 1/2"	SQ YD	173	173
50102400	CONCRETE REMOVAL	CU YD	4.6	4.6
50200100	STRUCTURE EXCAVATION	CU YD	15	15
50800205	REINFORCEMENT BARS, EPOXY COATED	POUND	720	720

* = SPECIALTY ITEMS

REV-SEP

MODEL: Default
FILE NAME: I:\P\DOT16588\PTB 181_006\Work Order #2020ADD_Sheets\162M73-CH-S00.dgn

CHASTAIN & ASSOCIATES LLC
CONSULTING ENGINEERS
SERVICE | SOLUTIONS | COMMITMENT™

USER NAME = dwozniarski
PLOT SCALE = 2.0000' / in.
PLOT DATE = 3/22/2021

DESIGNED - JKP	REVISOR -
DRAWN - DMW	REVISION -
CHECKED - SPF	REVISION -
DATE - 03/22/2021	REVISION -

**STATE OF ILLINOIS
DEPARTMENT OF TRANSPORTATION**

IL 38 OVER MILL CREEK CULVERT REPAIRS			
SUMMARY OF QUANTITIES			
SCALE:	SHEET 1 OF 4 SHEETS	STA.	TO STA.

F.A.P. RTE.	SECTION	COUNTY	TOTAL SHEETS	SHEET NO.
347	2020-201-CVL	KANE	20	3
			CONTRACT NO. 62M73	
ILLINOIS FED. AID PROJECT				

CODE NO.	ITEM	UNIT	TOTAL QUANTITY URBAN	CONSTRUCTION CODE	
				100% STATE	
				STRUCTURE	
				0013	
045-0075					
54002020	EXPANSION BOLTS 3/4 INCH	EACH	60	60	
54003000	CONCRETE BOX CULVERTS	CU YD	4.6	4.6	
63301210	REMOVE AND REERECT STEEL PLATE BEAM GUARDRAIL, TYPE A	FOOT	75	75	
67000400	ENGINEER'S FIELD OFFICE, TYPE A	CAL MO	12	12	
* 66900200	NON-SPECIAL WASTE DISPOSAL	CU YD	15	15	
* 66900530	SOIL DISPOSAL ANALYSIS	EACH	1	1	
* 66901001	REGULATED SUBSTANCES PRE-CONSTRUCTION PLAN	L SUM	1	1	
* 66901003	REGULATED SUBSTANCES FINAL CONSTRUCTION REPORT	L SUM	1	1	
* 66901006	REGULATED SUBSTANCES MONITORING	CAL DA	6	6	
67100100	MOBILIZATION	L SUM	1	1	
70107025	CHANGEABLE MESSAGE SIGN	CAL DA	28	28	
70300100	SHORT TERM PAVEMENT MARKING	FOOT	36	36	
70300150	SHORT TERM PAVEMENT MARKING REMOVAL	SQ FT	12	12	
70300220	TEMPORARY PAVEMENT MARKING - LINE 4"	FOOT	1363	1363	

* = SPECIALTY ITEMS REV-SEP

MODEL: Default
FILE NAME: I:\P\DOT16588\PTB 181_006\Work Order #2020ADD_Sheets\162M73-shc-SSC.dgn

CODE NO.	ITEM	UNIT	TOTAL QUANTITY URBAN	CONSTRUCTION CODE	
				100% STATE	
				STRUCTURE	
				0013	
				045-0075	
70300240	TEMPORARY PAVEMENT MARKING - LINE 6"	FOOT	325	325	
70300260	TEMPORARY PAVEMENT MARKING - LINE 12"	FOOT	150	150	
70300904	PAVEMENT MARKING TAPE, TYPE IV 4"	FOOT	2129	2129	
70400100	TEMPORARY CONCRETE BARRIER	FOOT	162.5	162.5	
70400200	RELOCATE TEMPORARY CONCRETE BARRIER	FOOT	162.5	162.5	
70600260	IMPACT ATTENUATORS, TEMPORARY (FULLY REDIRECTIVE, NARROW), TEST LEVEL 3	EACH	2	2	
70600332	IMPACT ATTENUATORS, RELOCATE (FULLY REDIRECTIVE, NARROW), TEST LEVEL 3	EACH	2	2	
* 78000200	THERMOPLASTIC PAVEMENT MARKING - LINE 4"	FOOT	1363	1363	
* 78000600	THERMOPLASTIC PAVEMENT MARKING - LINE 12"	FOOT	150	150	
78100200	TEMPORARY RAISED REFLECTIVE PAVEMENT MARKER	EACH	40	40	
* 78100300	REPLACEMENT REFLECTOR	EACH	22	22	
* 78200011	BARRIER WALL REFLECTORS, TYPE C	EACH	32	32	
* 78300202	PAVEMENT MARKING REMOVAL - WATER BLASTING	SQ FT	604	604	
* X0326898	CENTER LINE - RUMBLE STRIP - 16"	FOOT	388	388	



* = SPECIALTY ITEMS

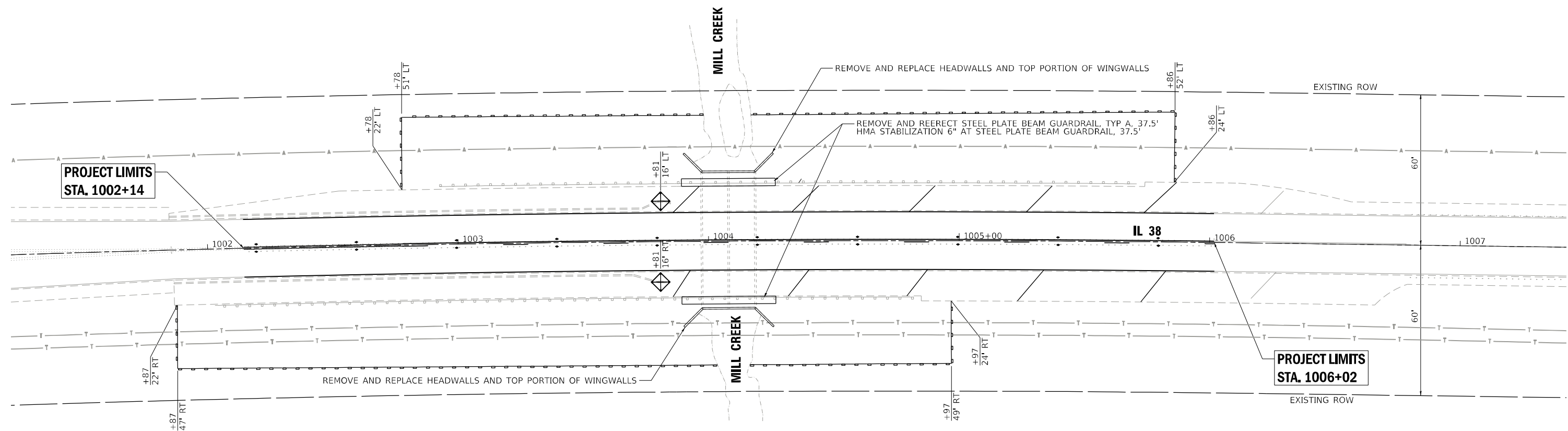
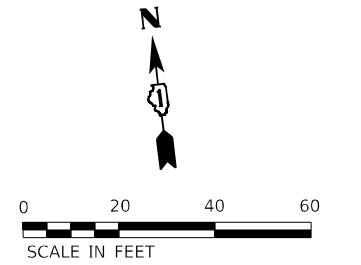
REV-SEP

MODEL: Default
FILE NAME: I:\P\DOT16588\PTB 181_006\Work Order #2020ADD_Sheets\162M73-shc-SSC.dgn

 CHASTAIN & ASSOCIATES LLC CONSULTING ENGINEERS SERVICE SOLUTIONS COMMITMENT	USER NAME = dwozniarski	DESIGNED - JKP	REVISED -	STATE OF ILLINOIS DEPARTMENT OF TRANSPORTATION	IL 38 OVER MILL CREEK CULVERT REPAIRS SUMMARY OF QUANTITIES		F.A.P. RTE. = 347	SECTION = 2020-201-CVL	COUNTY = KANE	TOTAL SHEETS = 20	SHEET NO. = 5
	PLOT SCALE = 2.0000 / in.	CHECKED - SPF	REVISED +				CONTRACT NO. 62M73				
	PLOT DATE = 3/22/2021	DATE = 03/22/2021	REVISED -				ILLINOIS FED. AID PROJECT				
							SCALE:	SHEET 3 OF 4 SHEETS	STA. TO STA.		

LEGEND

-  PERIMETER EROSION BARRIER
-  INLET FILTER



MODEL: D:\64bit\FILE NAME: D:\62M73-ent\plan.dwg

CHASTAIN & ASSOCIATES LLC
CONSULTING ENGINEERS
SERVICE | SOLUTIONS | COMMITMENT

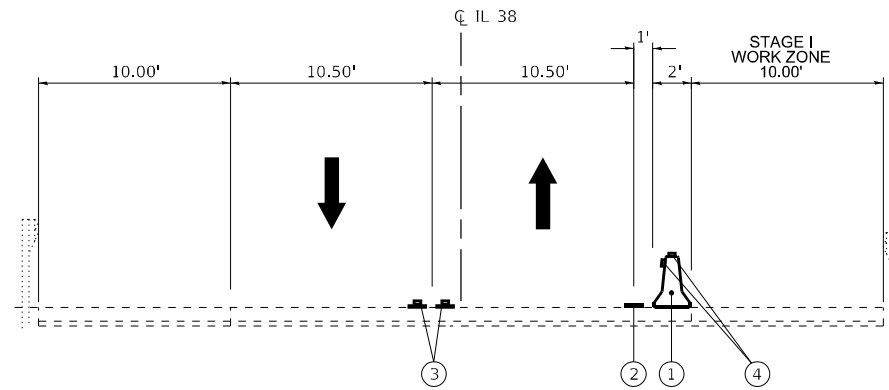
USER NAME = _USER_	DESIGNED - JKP	REVISED -
DRAWN - DMW	REVISIONS -	
PLOT SCALE = 40,0000 * / in.	CHECKED - SPF	REVISED -
PLOT DATE = 3/22/2021	DATE - 03/22/2021	REVISED -

**STATE OF ILLINOIS
DEPARTMENT OF TRANSPORTATION**

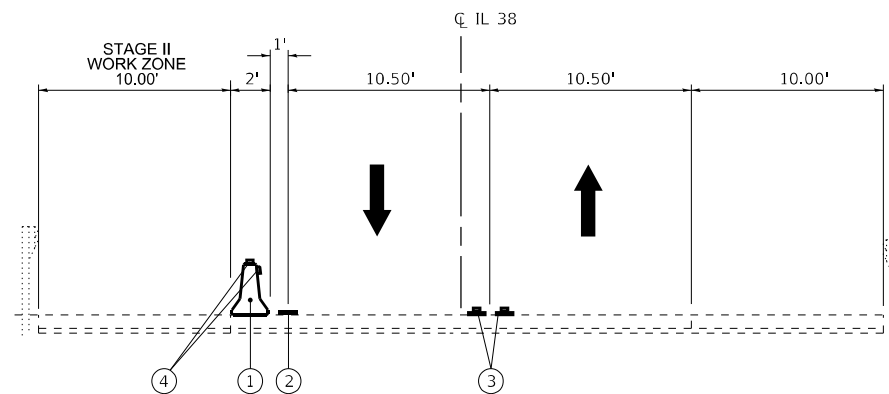
**IL 38 OVER MILL CREEK CULVERT REPAIRS
ROADWAY PLAN**

SCALE: SHEET 1 OF 1 SHEETS STA. TO STA.

F.A.P. RTE. 347	SECTION 2020-201-CVL	COUNTY KANE	TOTAL SHEETS 20	SHEET NO. 7
CONTRACT NO. 62M73				
ILLINOIS FED. AID PROJECT				



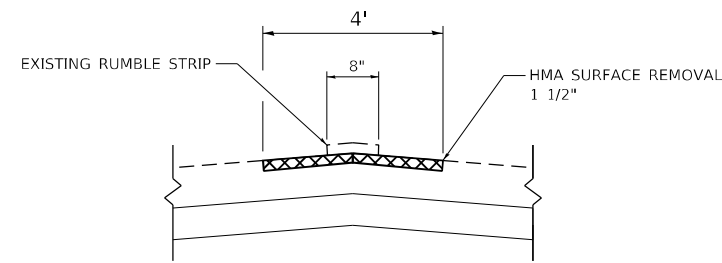
MOT ROADWAY TYPICAL SECTION STAGE I
STA. 1002+14 TO STA 1006+02
LOOKING WEST



MOT ROADWAY TYPICAL SECTION STAGE II
STA. 1002+14 TO STA 1006+02
LOOKING WEST

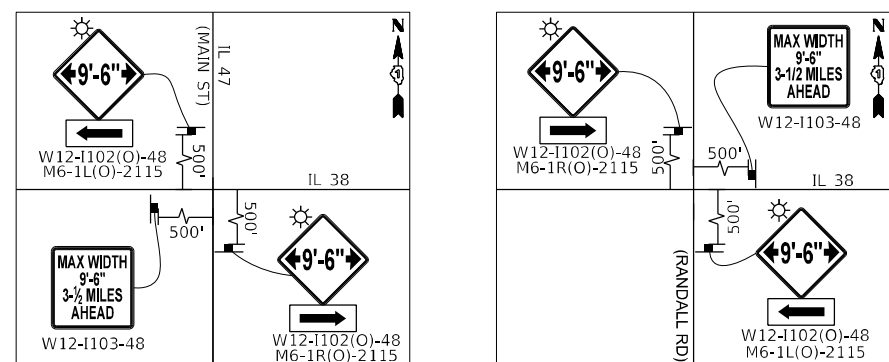
MOT LEGEND:

- ① TEMPORARY CONCRETE BARRIER WALL
- ② PAVEMENT MARKING TAPE, TYPE IV - LINE 4" (WHITE)
- ③ PAVEMENT MARKING TAPE, TYPE IV - LINE 4" AT 11" C-C WITH TEMPORARY RAISED REFLECTIVE AMBER PAVEMENT MARKERS AT 40' C-C (DOUBLE YELLOW)
- ④ BARRIER WALL REFLECTORS, TYPE C (SEE STD. 782006)



TYPICAL HMA CENTER LINE RUMBLE STRIP REMOVAL DETAIL

ADVANCED SIGNAGE AT INTERSECTIONS



SUGGESTED SEQUENCE OF CONSTRUCTION & MAINTENANCE OF TRAFFIC

STAGE I

1. INSTALL ADVANCE WIDTH RESTRICTION SIGNAGE.
2. REMOVE RUMBLE STRIPS AND PAVEMENT MARKING IN CONFLICT WITH THE DESIGNATED MAINTENANCE OF TRAFFIC. INSTALL STAGE I TRAFFIC CONTROL ALONG IL 38. SHIFT TRAFFIC SOUTH TO STAGE I TRAFFIC LANES, AND INSTALL TEMPORARY CONCRETE BARRIER USING STANDARD 701306.
3. PERFORM REPAIRS ON THE NORTH SIDE CULVERT HEADWALL AND WINGWALLS.

STAGE II

1. RELOCATE STAGE II TRAFFIC CONTROL ON IL 38 AND REMOVE STAGE I TRAFFIC CONTROL DEVICES. SHIFT TRAFFIC NORTH TO STAGE II TRAFFIC LANES.
2. PERFORM REPAIRS ON THE SOUTH SIDE CULVERT HEADWALL AND WINGWALLS.
3. REMOVE STAGE II TEMPORARY CONCRETE BARRIER.
4. REMOVE STAGE II TRAFFIC CONTROL DEVICES. SHIFT TRAFFIC BACK TO NORMAL LANES ALONG IL 38.
5. COMPLETE PERMANENT PAVEMENT MARKING AND INSTALL RUMBLE STRIPS ALONG IL 38.

MAINTENANCE OF TRAFFIC GENERAL NOTES:

1. THE TRAFFIC CONTROL DEPICTED HEREIN IS THE MINIMUM REQUIREMENT. ADDITIONAL TRAFFIC CONTROL DEVICES AS SPECIFIED IN THE HIGHWAY STANDARDS AS SHOWN IN THE INDEX OF SHEETS AND THE SPECIAL PROVISIONS SHALL BE PLACED BY THE CONTRACTOR TO THE SATISFACTION OF THE ENGINEER. ALL TRAFFIC CONTROL DEVICES SHALL BE CONSIDERED INCLUDED IN THE COST OF TRAFFIC CONTROL AND PROTECTION, (SPECIAL) UNLESS OTHERWISE INDICATED WITHIN THESE GENERAL NOTES, PLANS OR SPECIAL PROVISIONS.
2. MAINTENANCE OF TRAFFIC WIDTH RESTRICTION REQUIREMENT - THE CONTRACTOR SHALL NOTIFY THE DISTRICT ONE TRAFFIC CONTROL SUPERVISOR, IN WRITING, WHEN THE CONTRACTOR RECEIVES AN AWARD LETTER FOR THE CONTRACT. THE LETTER SHALL STATE THE ANTICIPATED START DATE OF LANE WIDTH RESTRICTIONS. THE TWENTY-ONE (21) DAY NOTICE WILL START FROM THE AWARD DATE. NO WIDTH RESTRICTIONS WILL BE ALLOWED UNTIL TWENTY-ONE (21) DAYS AFTER RECEIVING NOTICE FROM THE CONTRACTOR. THE CONTRACTOR MAY ELECT TO PROVIDE THE ANTICIPATED START DATE OF LANE WIDTH RESTRICTIONS AT PRECONSTRUCTION MEETING AS LONG AS THERE IS A MINIMUM OF TWENTY-ONE (21) DAYS ADVANCED NOTICE.
3. THE CONTRACTOR SHALL FURNISH, INSTALL, MAINTAIN AND REMOVE ALL SIGNS AND SIGN SUPPORTS REQUIRED FOR MAINTENANCE OF TRAFFIC.
4. THE CONTRACTOR SHALL BE RESPONSIBLE FOR PROVIDING LABOR, SIGNS AND TRAFFIC CONTROL DEVICES NECESSARY FOR THE MAINTENANCE OF TRAFFIC UNLESS NOTED OTHERWISE IN THE SPECIAL PROVISIONS.
5. IN ADVANCE OF ALL STAGE CHANGES ON IL 38, THE CONTRACTOR SHALL PLACE ONE (1) PORTABLE CHANGEABLE MESSAGE SIGN AT EACH END OF THE PROJECT ALONG IL 38 AS DIRECTED AT A LOCATION DESIGNATED BY THE ENGINEER TO INFORM MOTORISTS OF THE UPCOMING STAGE CHANGE ON IL 38. THE MESSAGE SHALL BE APPROVED BY THE ENGINEER.
6. ALL EXISTING SIGNS THAT CONFLICT WITH THE TRAFFIC CONTROL PLAN SHALL BE COVERED OR REMOVED IN ACCORDANCE WITH ARTICLE 107.25 OF THE STANDARD SPECIFICATIONS.
7. THE CONTRACTOR SHALL BE REQUIRED TO REMOVE ALL EXISTING PAVEMENT MARKINGS WHICH CONFLICT WITH THE DESIGNATED TRAFFIC CONTROL PLAN.
8. THE CONTRACTOR SHALL BE REQUIRED TO MAINTAIN TRAFFIC IN ACCORDANCE WITH THE MAINTENANCE OF TRAFFIC PLANS, SPECIAL PROVISIONS, APPLICABLE STATE STANDARDS, AND AS DIRECTED BY THE ENGINEER. ANY CHANGES TO THE MAINTENANCE OF TRAFFIC SHALL BE SUBMITTED TO THE ENGINEER FOR APPROVAL PRIOR TO IMPLEMENTING ANY CHANGES.
9. TRAFFIC CONDITIONS, ACCIDENTS, AND OTHER UNFORESEEN EMERGENCY CONDITIONS MAY REQUIRE THE ENGINEER TO RESTRICT, MODIFY OR REMOVE LANE CLOSURES OR CHANNELIZATION SHOWN IN THE PLANS. THE CONTRACTOR SHALL PROMPTLY RESPOND AT THE TIME OF NOTIFICATION BY THE ENGINEER FOR THE MAINTENANCE OF TRAFFIC CONTROL DEVICES.
10. THE ENGINEER SHALL BE INFORMED A MINIMUM OF 48 HOURS IN ADVANCE OF ANY PROPOSED CHANGE TO THE SUGGESTED STAGES OF CONSTRUCTION AND TRAFFIC CONTROL PLAN.
11. ALL TEMPORARY PAVEMENT MARKINGS SHOWING DETERIORATION AFTER SEVEN (7) DAYS OF SERVICE SHALL BE REPLACED BY THE CONTRACTOR AS DIRECTED BY THE ENGINEER. ALL MARKINGS THAT REQUIRE REPLACEMENT PRIOR TO SEVEN (7) DAYS OF SERVICE SHALL BE REPLACED BY THE CONTRACTOR AT HIS EXPENSE.
12. WHEN THEY ARE NO LONGER NECESSARY, ALL TRAFFIC CONTROL DEVICES SHALL IMMEDIATELY BE REMOVED, COVERED OR TURNED AWAY FROM TRAFFIC. W21-1 WORKER AND W20-7 FLAGGER SIGNS SHALL BE REMOVED OR COVERED WHEN NOT APPLICABLE FOR GREATER THAN ONE HOUR. WHEN A SIGN IS COVERED, ITS POST SHALL HAVE A REFLECTIVE 3" X 6" DELINEATOR INSTALLED. THE COST OF THE DELINEATOR IS INCLUDED IN THE COST OF TRAFFIC CONTROL AND PROTECTION, (SPECIAL).
13. TEMPORARY CONCRETE BARRIERS AND TEMPORARY IMPACT ATTENUATORS SHALL BE PLACED AS SHOWN IN THE PLANS. FURNISHING, INSTALLING AND RELOCATING TEMPORARY CONCRETE BARRIER AND TEMPORARY IMPACT ATTENUATORS SHALL BE IN ACCORDANCE WITH IDOT SPECIAL PROVISIONS, IDOT HIGHWAY STANDARDS, STANDARD SPECIFICATIONS, AND AS DIRECTED BY THE ENGINEER.
14. IMMEDIATELY AFTER THE COMPLETION OF CONSTRUCTION, THE CONTRACTOR SHALL RESTORE ALL PERMANENT PAVEMENT MARKINGS, SIGNS, AND OTHER TRAFFIC CONTROL DEVICES THAT WERE COVERED, REMOVED, DAMAGED OR OTHERWISE AFFECTED BY CONSTRUCTION.
15. ACCESS TO ALL PRIVATE AND COMMERCIAL DRIVEWAYS AND ENTRANCES ARE TO BE MAINTAINED DURING CONSTRUCTION.

MODEL Path: \\... CHASTAIN & ASSOCIATES LLC CONSULTING ENGINEERS SERVICE | SOLUTIONS | COMMITMENT



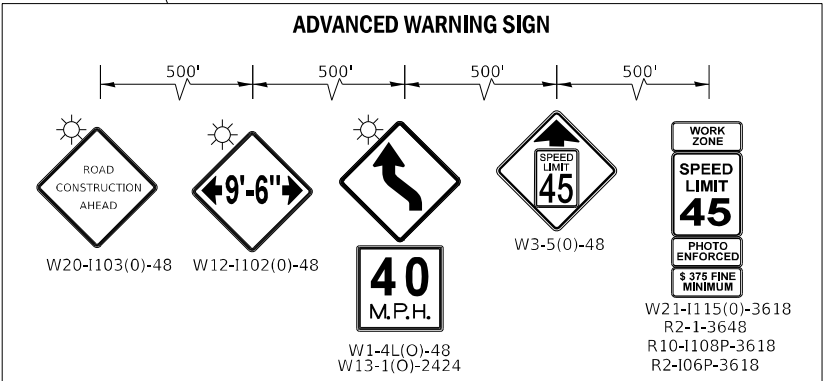
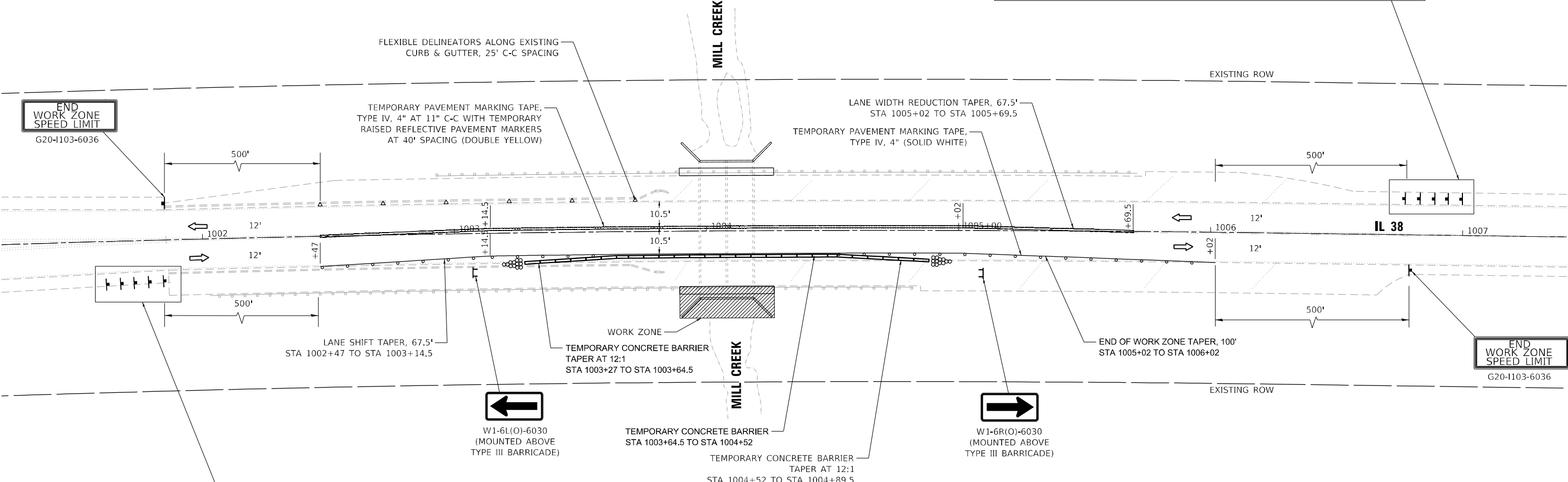
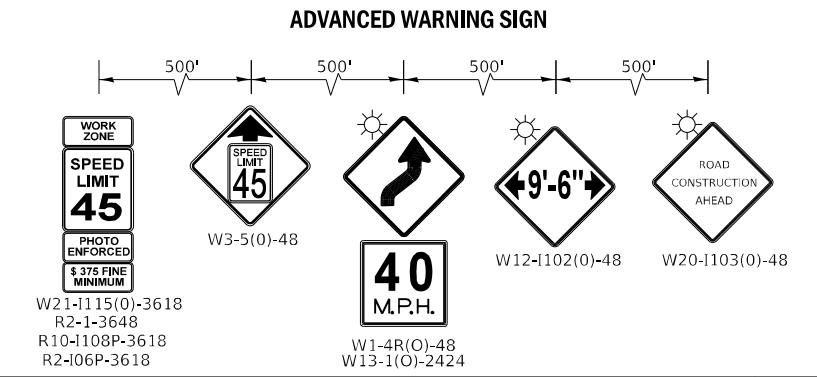
USER NAME = dwozniarski	DESIGNED - JKP	REVISED -
PLOT SCALE = 10,0000' / in.	DRAWN - DMW	REVISED -
PLOT DATE = 3/22/2021	CHECKED - SPF	REVISED -
	DATE - 03/22/2021	REVISED -

**STATE OF ILLINOIS
DEPARTMENT OF TRANSPORTATION**

**IL 38 OVER MILL CREEK CULVERT REPAIRS
MAINTENANCE OF TRAFFIC PLAN TYPICAL SECTION**

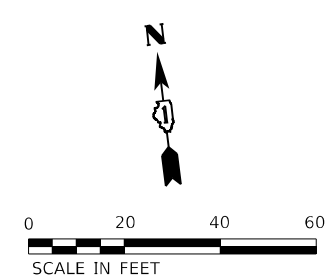
SCALE: SHEET 1 OF 3 SHEETS STA. TO STA.

F.A.P. RTE. 347	SECTION 2020-201-CVL	COUNTY KANE	TOTAL SHEETS 20	SHEET NO. 8
CONTRACT NO. 62M73				
ILLINOIS FED. AID PROJECT				



MAINTENANCE OF TRAFFIC LEGEND

- WORK ZONE
- TEMPORARY CONCRETE BARRIER
- SIGN ON PERMANENT OR PORTABLE SUPPORT
- DIRECTION OF TRAFFIC
- TYPE III BARRICADE
- TEMPORARY IMPACT ATTENUATOR (FULLY DIRECTIVE, NARROW), TEST LEVEL 3
- DRUM OR TYPE II BARRICADE WITH STEADY BURNING BIDIRECTIONAL LIGHT AT 25' C-C SPACING IN TANGENT, AND 20' C-C SPACING TAPERS
- FLEXIBLE DELINEATORS, 25' C-C SPACING



MODEL: D:\64bit... FILE NAME: D:\62M73-ent\ent.dwg 2.dwg

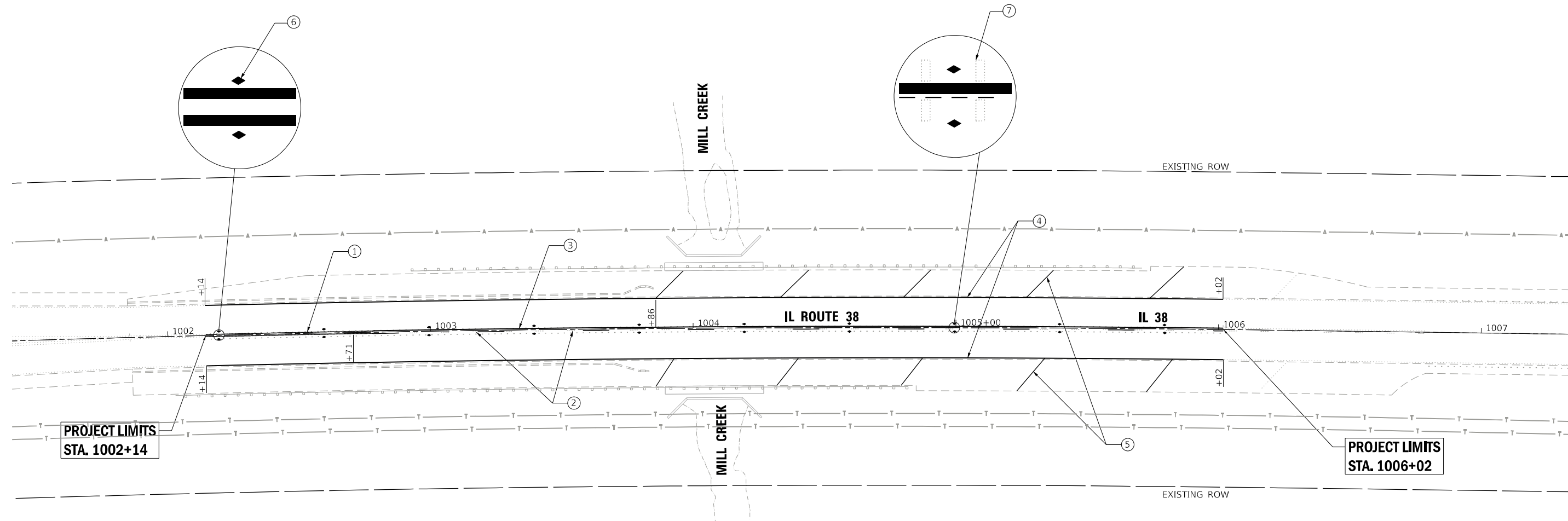
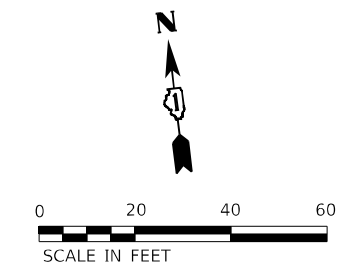
CHASTAIN & ASSOCIATES LLC
CONSULTING ENGINEERS
SERVICE | SOLUTIONS | COMMITMENT

USER NAME = _USER_	DESIGNED - JKP	REVISED -
PLOT SCALE = 40,0000' / in.	DRAWN - DMW	REVISED -
PLOT DATE = 3/22/2021	CHECKED - SPF	REVISED -
	DATE - 03/22/2021	REVISED -

**STATE OF ILLINOIS
DEPARTMENT OF TRANSPORTATION**

IL 38 OVER MILL CREEK CULVERT REPAIRS MAINTENANCE OF TRAFFIC PLAN STAGE II	
SCALE:	SHEET 3 OF 3 SHEETS STA. TO STA.

F.A.P. RTE. 347	SECTION 2020-201-CVL	COUNTY KANE	TOTAL SHEETS 20	SHEET NO. 10
CONTRACT NO. 62M73				
ILLINOIS FED. AID PROJECT				



NOTE:
PERMANENT PAVEMENT MARKINGS SHALL BE INSTALLED ACCORDING TO IDOT'S D1 DETAIL TC-13.

PAVEMENT MARKING LEGEND

- ① THERMOPLASTIC PAVEMENT MARKING - LINE 4" (DOUBLE YELLOW)
STA. 1002+14 TO STA. 1002+71

② THERMOPLASTIC PAVEMENT MARKING - LINE 4" (YELLOW SKIP DASH - 10', 30' SKIP)
STA. 1002+71 TO STA. 1006+02

③ THERMOPLASTIC PAVEMENT MARKING - LINE 4" (SOLID YELLOW)
STA. 1002+71 TO STA. 1006+02
- ④ THERMOPLASTIC PAVEMENT MARKING - LINE 4" (SOLID WHITE)
STA. 1002+14 TO STA. 1006+02

⑤ THERMOPLASTIC PAVEMENT MARKING - LINE 12" (WHITE DIAGONAL SPACED AT 45° C-C)
STA. 1003+86 TO STA. 1006+02

⑥ REPLACEMENT REFLECTOR (2-WAY AMBER)
STA. 1002+14 TO STA. 1006+02

⑦ CENTERLINE RUMBLE STRIP - 16"
STA 1002+14 TO STA 1006+02

MODEL: D:\64bit... FILE NAME: D:\62M73-ent\pkm.dgn



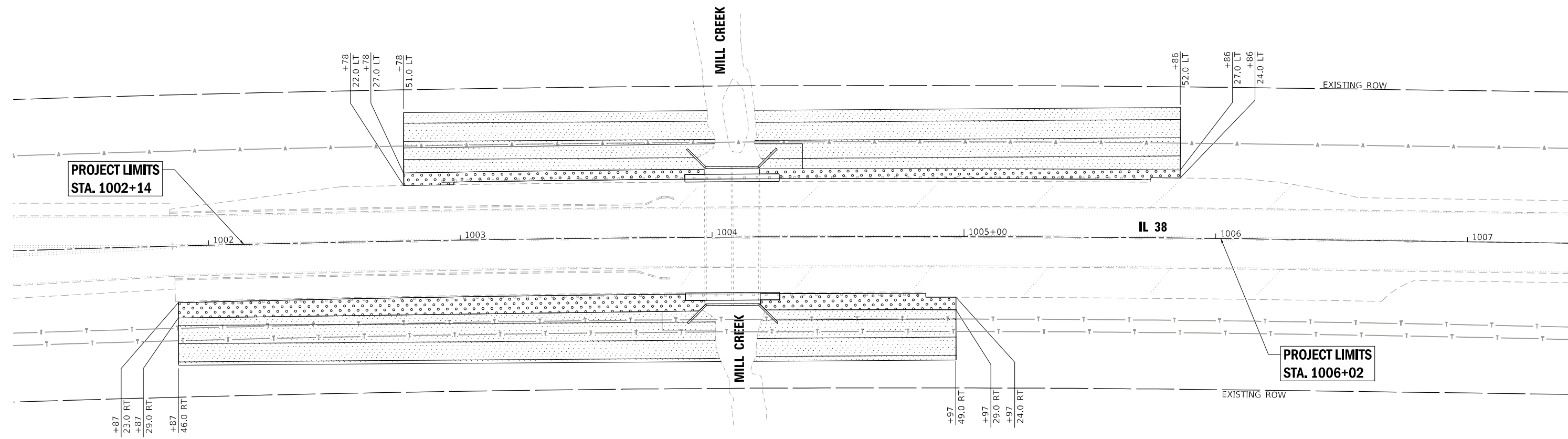
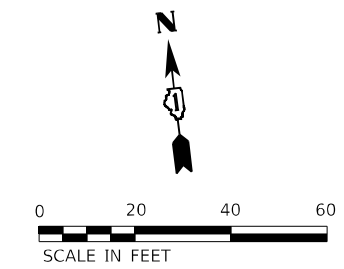
USER NAME = _USER_	DESIGNED - JKP	REVISED -
	DRAWN - DMW	REVISED -
PLOT SCALE = 40,0000 * / in.	CHECKED - SPF	REVISED -
PLOT DATE = 3/22/2021	DATE - 03/22/2021	REVISED -

**STATE OF ILLINOIS
DEPARTMENT OF TRANSPORTATION**

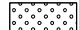
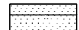
**IL 38 OVER MILL CREEK CULVERT REPAIRS
PAVEMENT MARKING PLAN**

SCALE: SHEET 1 OF 1 SHEETS STA. TO STA.

F.A.P. RTE. 347	SECTION 2020-201-CVL	COUNTY KANE	TOTAL SHEETS 20	SHEET NO. 11
CONTRACT NO. 62M73				
ILLINOIS FED. AID PROJECT				



RESTORATION LEGEND

-  SEEDING, CLASS 2A W/ EROSION CONTROL BLANKET
-  SEEDING, CLASS 4 W/ EROSION CONTROL BLANKET

MODEL: D:\64bit...
FILE NAME: D:\62M73-restoration.dwg

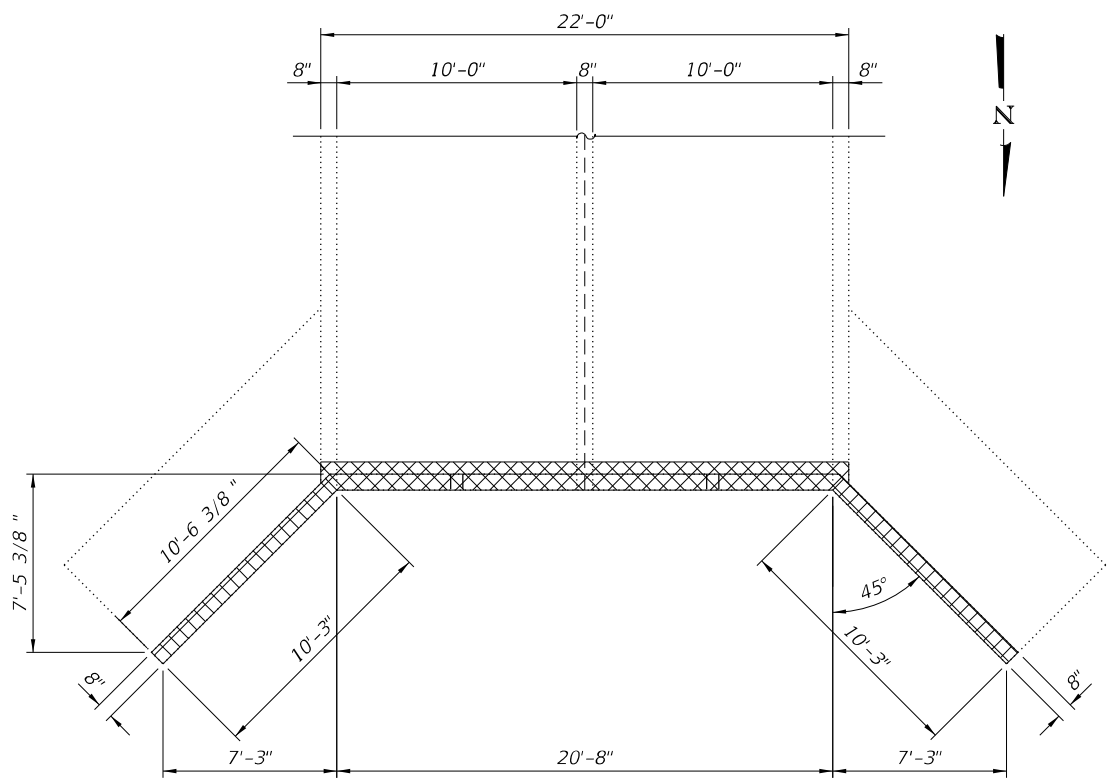
CHASTAIN & ASSOCIATES LLC
CONSULTING ENGINEERS
SERVICE | SOLUTIONS | COMMITMENT

USER NAME = _USER_	DESIGNED - JKP	REVISED -
DRAWN - DMW	CHECKED - SPF	REVISED -
PLOT SCALE = 40,0000 * / in.	DATE - 03/22/2021	REVISED -
PLOT DATE = 3/22/2021		

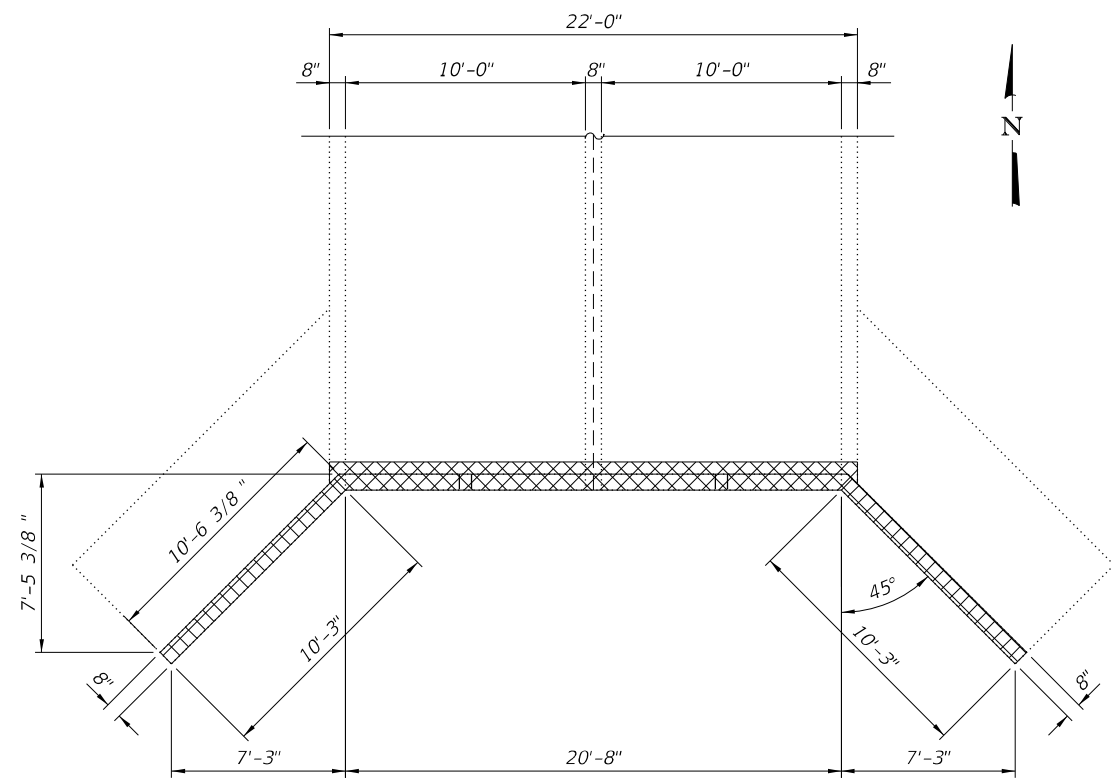
**STATE OF ILLINOIS
DEPARTMENT OF TRANSPORTATION**

IL 38 OVER MILL CREEK CULVERT REPAIRS RESTORATION PLAN	
SCALE:	SHEET 1 OF 1 SHEETS STA. TO STA.

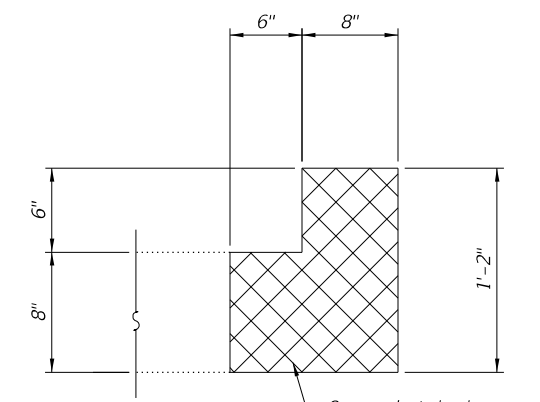
F.A.P. RTE. 347	SECTION 2020-201-CVL	COUNTY KANE	TOTAL SHEETS 20	SHEET NO. 12
CONTRACT NO. 62M73				
ILLINOIS FED. AID PROJECT				



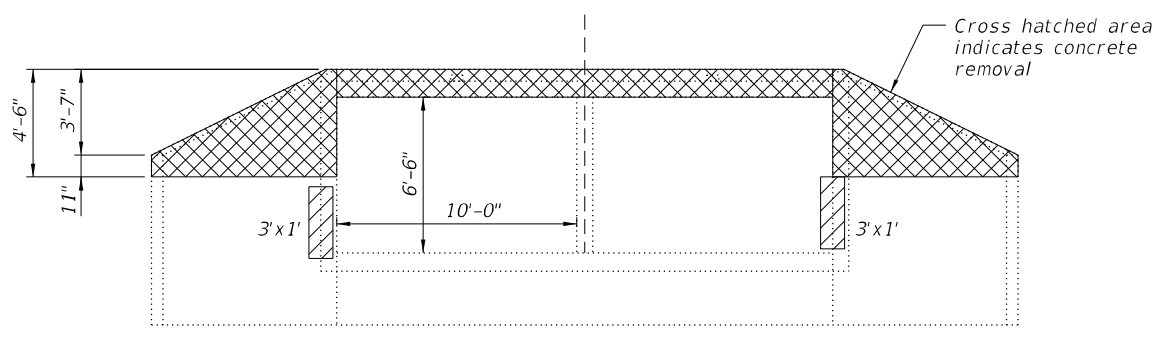
NORTH END PLAN
Showing removal



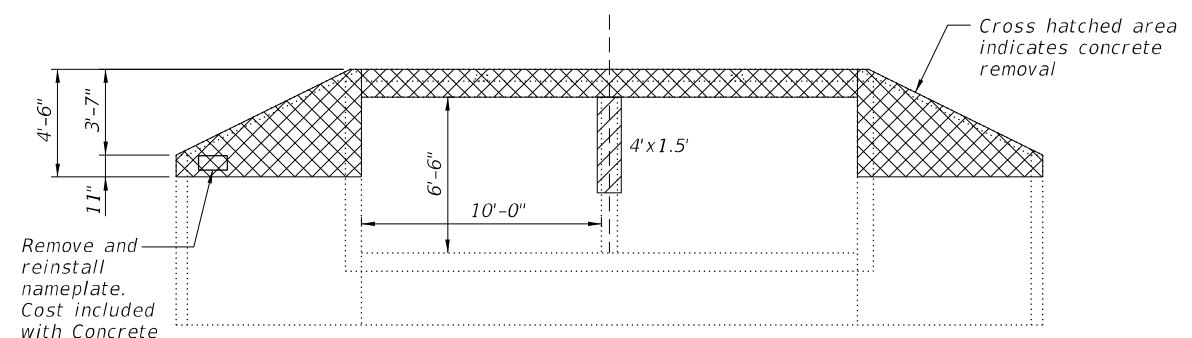
SOUTH END PLAN
Showing removal



SECTION THRU HEADWALL



NORTH END ELEVATION
Showing removal and repair



SOUTH END ELEVATION
Showing removal and repair

LEGEND
 Structural Repair of Concrete (Depth ≤ 5")

BILL OF MATERIAL

Item	Unit	Total
Structural Repair of Concrete (Depth ≤ 5")	Sq. Ft.	12
Concrete Removal	Cu. Yd.	4.6

MODEL: Default
 FILE NAME: I:\006\Work Order #2020\ADD_Structure\ID162M73_4r_culvert.dwg
 ID: 006\Work Order #2020\ADD_Structure\ID162M73_4r_culvert.dwg

CHASTAIN & ASSOCIATES LLC
 CONSULTING ENGINEERS
 SERVICE | SOLUTIONS | COMMITMENT

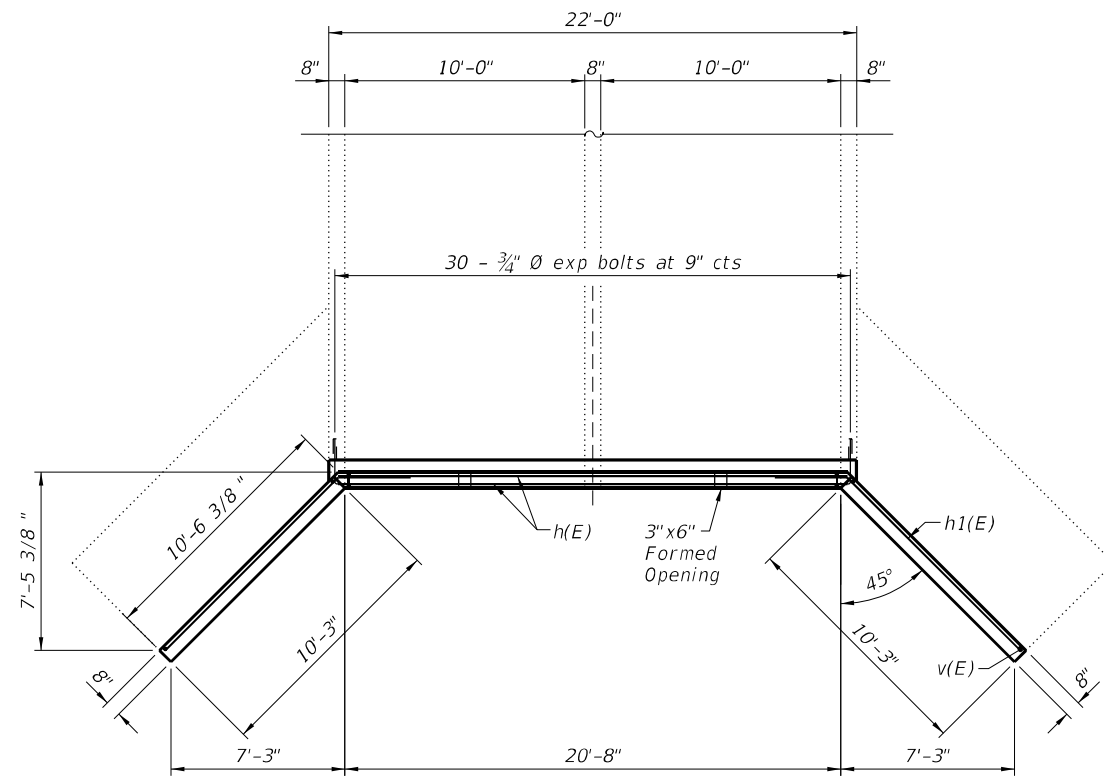
USER NAME = dwozniarski	DESIGNED - JMB	REVISED -
PLOT SCALE = 8:0" / in.	DRAWN - RLK	REVISED -
PLOT DATE = 3/22/2021	CHECKED - BCG	REVISED -
	DATE - 3/22/2021	REVISED -

STATE OF ILLINOIS
DEPARTMENT OF TRANSPORTATION

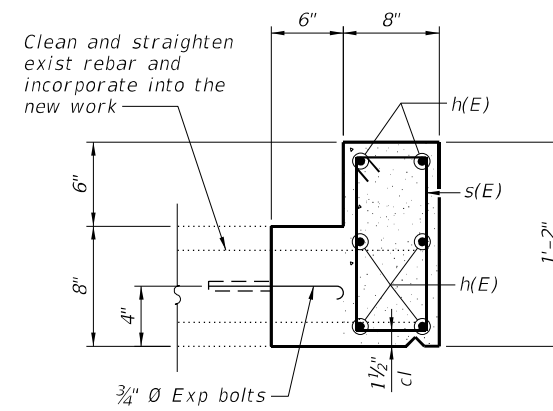
IL 38 OVER MILL CREEK CULVERT REPAIRS
CULVERT DETAILS STRUCTURE NO. 045-0075

SCALE: SHEET 2 OF 3 SHEETS STA. TO STA.

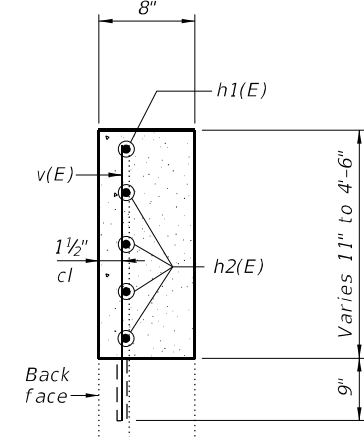
F.A.P. RTE. 347	SECTION 2020-201-CVL	COUNTY KANE	TOTAL SHEETS 20	SHEET NO. 14
S.N. 045-0075		CONTRACT NO. 62M73		
ILLINOIS FED. AID PROJECT				



TYPICAL END PLAN

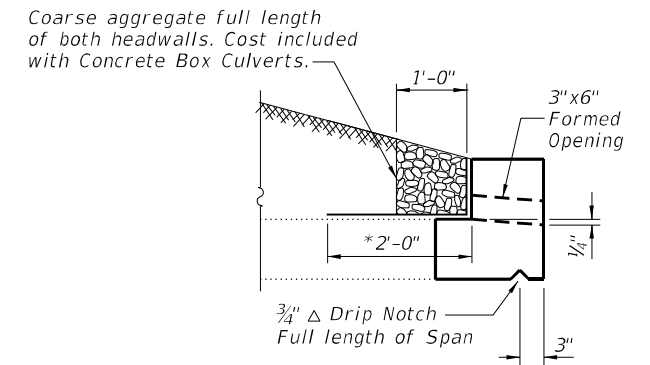


SECTION A-A



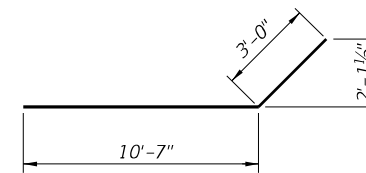
SECTION B-B

Clean and straighten exist vertical rebar and incorporate into the new work

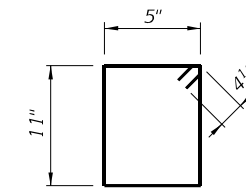


DRAIN DETAIL

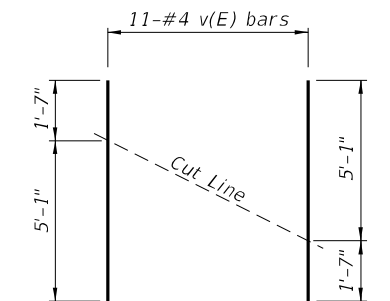
*Membrane waterproofing for buried structures full width of headwall



BAR h1(E)

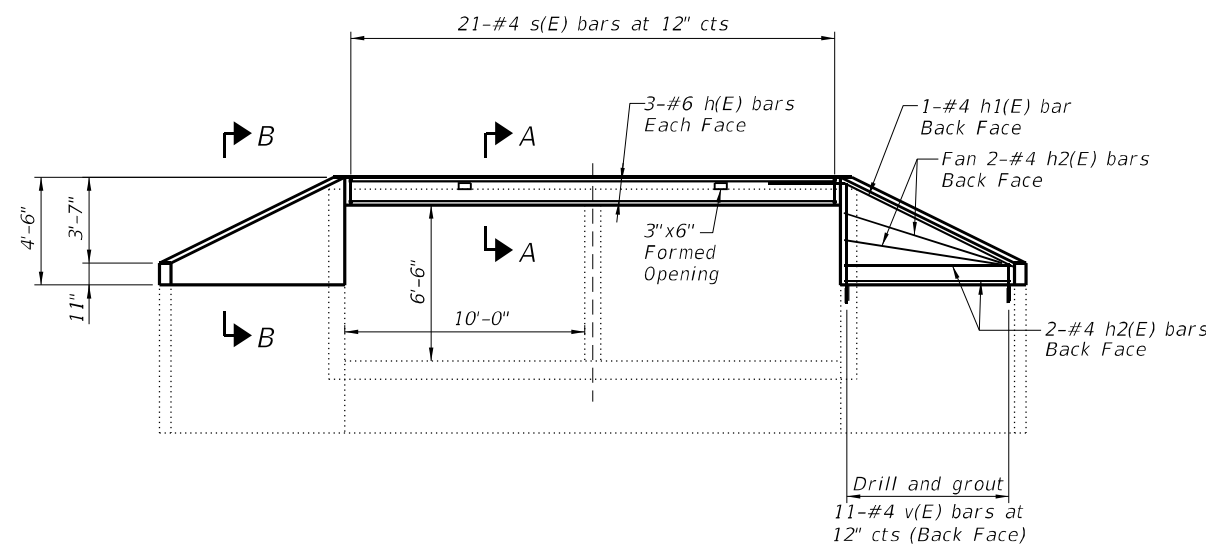


BAR s(E)



BAR CUTTING DIAGRAM

Order bars shown full length. Cut as shown and use remainder of bars in opposite wingwall.



TYPICAL END ELEVATION

NOTES

- Reinforcement bars designated (E) shall be epoxy coated.
- Plan dimensions and details relative to existing plans are subject to nominal construction variations. The CONTRACTOR shall field verify existing dimensions and details affecting new construction and make necessary approved adjustments prior to construction or ordering of materials. Such variations shall not be cause for additional compensation for a change in scope of the work, however, the CONTRACTOR will be paid for the quantity actually furnished at the unit price bid for the work.
- Drilling and grouting bars shall be done in accordance with Section 584 of the Standard Specifications.
- CONTRACTOR is to locate the existing reinforcement bars in culverts prior to drilling to avoid damaging existing reinforcement bars.
- Existing reinforcement bars to remain shall be blast cleaned to grey metal and incorporated into new concrete. Cost is included in "Concrete Removal." Any reinforcement bars that are damaged during concrete removal shall be replaced with approved bar splices or an anchorage system. Reinforcement bars shall be cleaned according to Article 501.05 of the Standard Specifications and to the satisfaction of the Engineer. Cost included with Concrete Removal.
- Expansion bolts shall be according to Standard Specification Article 1006.09.
- Cost for backfilling wingwalls shall be included in Structure Excavation.

BILL OF MATERIAL
TWO END SECTIONS

Bar	No.	Size	Length	Shape
h(E)	12	#6	21'-0"	—
h1(E)	4	#4	13'-8"	—
h2(E)	16	#4	10'-0"	—
s(E)	42	#4	3'-5"	□
v(E)	22	#4	6'-8"	—
Concrete Box Culverts		Cu. Yd.	4.6	
Reinforcement Bars, Epoxy Coated		Pound	720	
Expansion Bolts 3/4" Ø		Each	60	

DESIGN STRESSES

f_y = 60,000 psi
f'_c = 3,500 psi

MIN BAR LAP

#4 Bar = 2'-7"

MODEL: Default
FILE NAME: I:\Proj\ID0716588_PTB_181_006\Work Order #2020ADD_Structure\ID162M73_4r_culvert.dwg

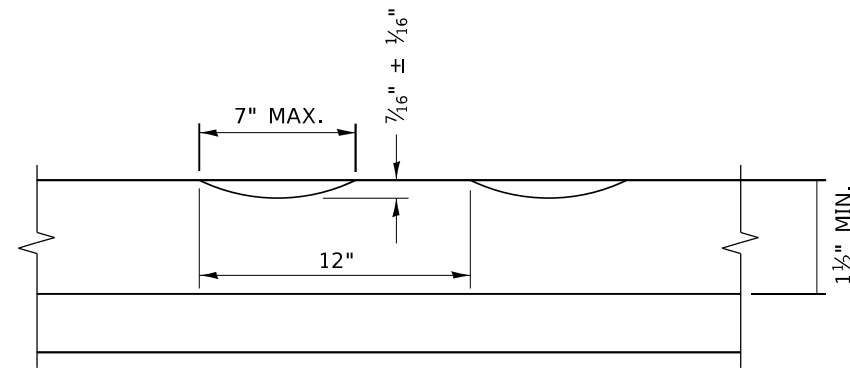
CHASTAIN & ASSOCIATES LLC
CONSULTING ENGINEERS
SERVICE | SOLUTIONS | COMMITMENT

USER NAME = dwozniarski	DESIGNED - JMB	REVISED -
PLOT SCALE = 8:0" = 1" / lin.	DRAWN - RLK	REVISED -
PLOT DATE = 3/22/2021	CHECKED - BCG	REVISED -
	DATE - 3/22/2021	REVISED -

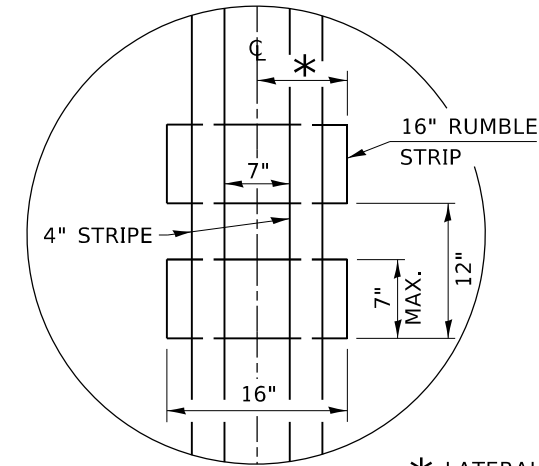
STATE OF ILLINOIS
DEPARTMENT OF TRANSPORTATION

SCALE:	SHEET 3 OF 3 SHEETS	STA. TO STA.	F.A.P. RTE.	SECTION	COUNTY	TOTAL SHEETS	SHEET NO.
			347	2020-201-CVL	KANE	20	15
			S.N. 045-0075	CONTRACT NO. 62M73			
			ILLINOIS	FED. AID PROJECT			

IL 38 OVER MILL CREEK CULVERT REPAIRS
CULVERT DETAILS STRUCTURE NO. 045-0075



SECTION A-A



* LATERAL DEVIATION SHALL NOT EXCEED ONE INCH IN 100 FEET.

DETAIL B

GENERAL NOTES

CENTERLINE RUMBLE STRIPS SHALL BE CONSTRUCTED ACCORDING TO SECTION 642 ALONG THE CENTERLINE OF PAVEMENT.

SEE STANDARD 780001 FOR OTHER STRIPING LAYOUTS. RUMBLE STRIPS SHALL NOT BE PLACED ON BRIDGES.

ALL RUMBLE STRIPS SHALL BE MILLED.

CENTERLINE RUMBLE STRIPS SHALL BE CONTINUOUS THROUGH CONNECTIONS OF SIDEROADS WITH NO LEFT TURN LANES.

DISCONTINUE CENTERLINE RUMBLE STRIPS THROUGH THE LIMITS OF ALL LEFT TURN LANES, INCLUDING ANY LANE TAPER SECTIONS.

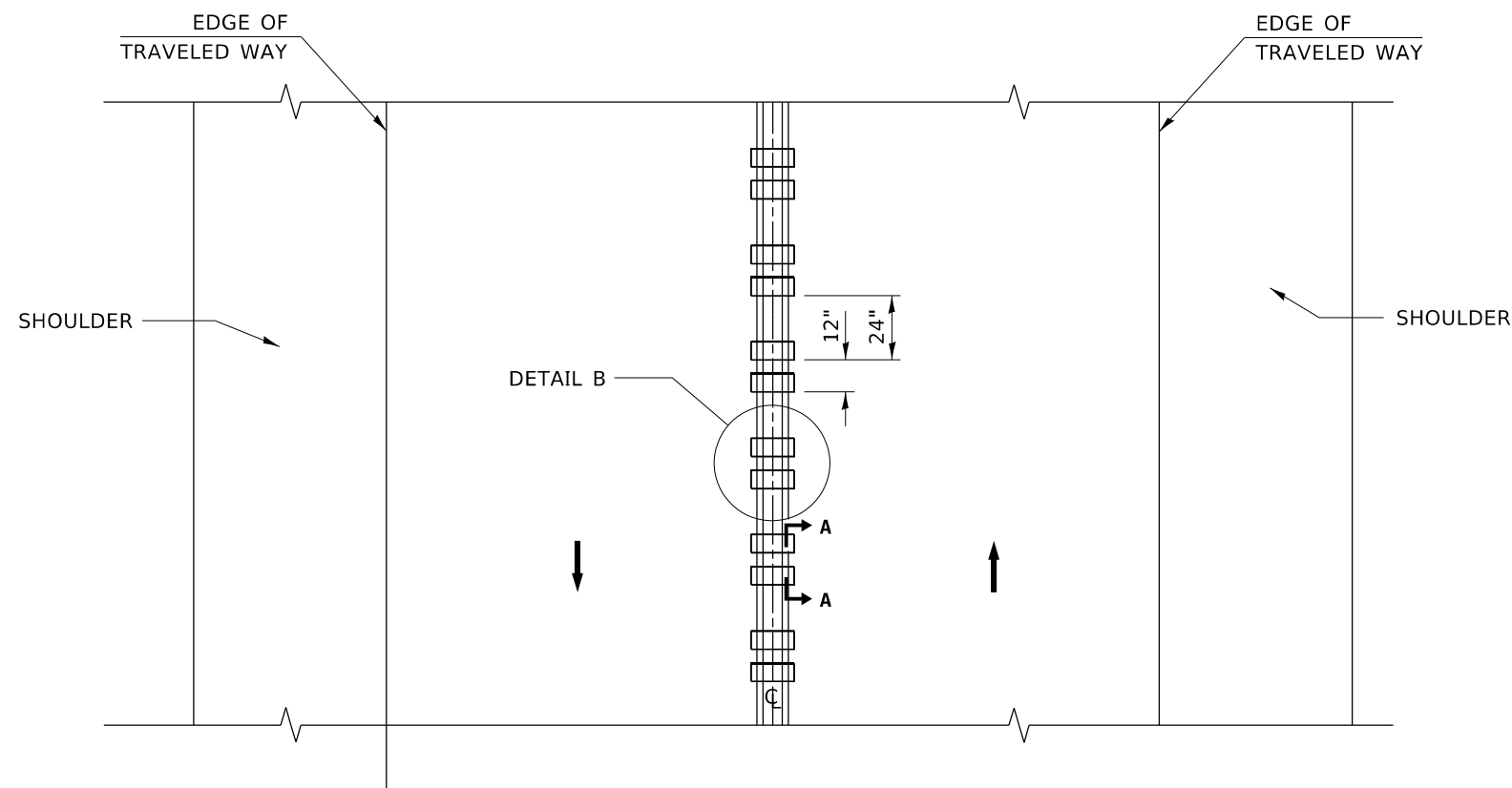
AFTER RUMBLE STRIPS ARE INSTALLED, THE PAVEMENT SURFACE SHALL BE SWEEPED CLEAN PRIOR TO THE PLACEMENT OF THE NEW PAVEMENT MARKINGS.

WHERE USED, ADJUST SPACING OF RAISED REFLECTIVE PAVEMENT MARKERS TO FALL IN WIDER GAP BETWEEN RUMBLE STRIPS.

BASIS OF PAYMENT

THIS WORK WILL BE PAID FOR AT THE CONTRACT UNIT PRICE PER FOOT FOR CENTERLINE-RUMBLE STRIP OF THE WIDTH SPECIFIED.

HOT-SPRAY THERMOPLASTIC PAVEMENT MARKING WILL BE USED OVER THE RUMBLE STRIPS, AND WILL BE PAID FOR SEPARATELY.



TWO-WAY ROAD

MODEL: D:\default
FILE NAME: p:\uplan\pam\dat\illinois\pov\PWIDOT\Documents\DOT_Offices\District_1\Projects\Dist502\23A\CD\Draw\C03\sheet3155.dgn

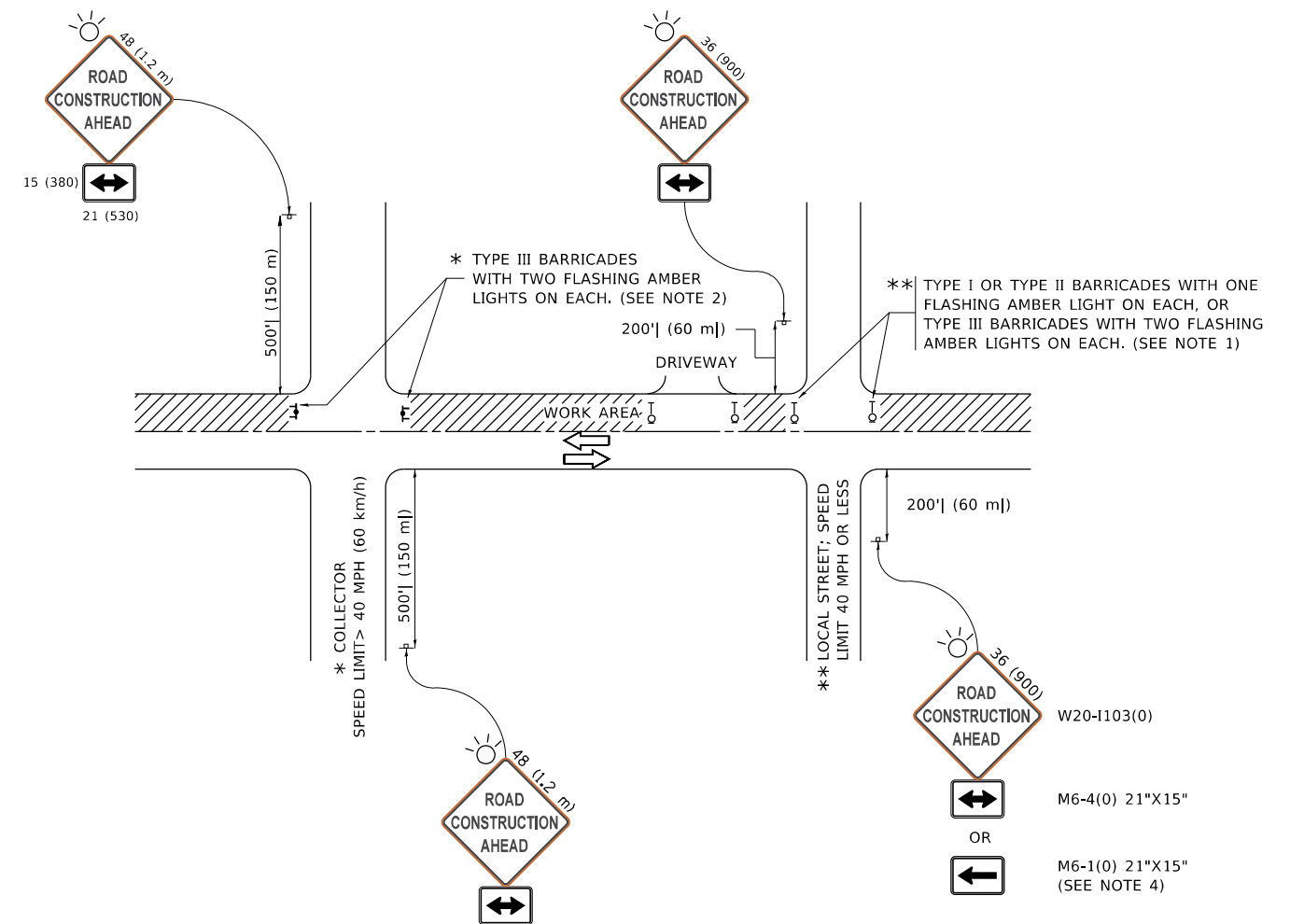
USER NAME = foatemj	DESIGNED - R. BORO	REVISED -
	DRAWN -	REVISED -
PLOT SCALE = 50,0000 ' / in.	CHECKED -	REVISED -
PLOT DATE = 3/27/2019	DATE - 08-06-2012	REVISED -

**STATE OF ILLINOIS
DEPARTMENT OF TRANSPORTATION**

RUMBLE STRIPS FOR CENTERLINE, NON-FREEWAY

SCALE: NONE SHEET 1 OF 1 SHEETS STA. TO STA.

F.A.P. RTE.	SECTION	COUNTY	TOTAL SHEETS	SHEET NO.
347	2020-201-CVL	KANE	20	16
BD 55			CONTRACT NO. 62M73	
ILLINOIS FED. AID PROJECT				



NOTES:

- SIDE ROAD WITH A SPEED LIMIT OF 40 MPH (60 km/h) OR LESS AS SHOWN ON THE DRAWING AND AS DIRECTED BY THE ENGINEER:
 - ONE "ROAD CONSTRUCTION AHEAD" SIGN 36 x 36 (900x900) WITH A FLASHER MOUNTED ON IT APPROXIMATELY 200' (60 m) IN ADVANCE OF THE MAIN ROUTE.
 - THE CLOSED PORTION OF THE MAIN ROUTE SHALL BE PROTECTED BY BLOCKING WITH TYPE I, TYPE II OR TYPE III BARRICADES, 1/3 OF THE CROSS SECTION OF THE CLOSED PORTION.
- SIDE ROAD WITH A SPEED LIMIT GREATER THAN 40 MPH (60 km/h) AS SHOWN ON THE DRAWING AND AS DIRECTED BY THE ENGINEER:
 - ONE "ROAD CONSTRUCTION AHEAD" SIGN 48 x 48 (1.2 m x 1.2 m) WITH A FLASHER MOUNTED ON IT APPROXIMATELY 500' (150 m) IN ADVANCE OF THE MAIN ROUTE.
 - THE CLOSED PORTION OF THE MAIN ROUTE SHALL BE PROTECTED BY BLOCKING WITH TYPE III BARRICADES, 1/2 OF THE CROSS SECTION OF THE CLOSED PORTION.
- CONES MAY BE SUBSTITUTED FOR BARRICADES OR DRUMS AT HALF THE SPACING DURING DAY OPERATIONS. CONES SHALL BE A MINIMUM OF 28 (710) IN HEIGHT.
- SIGNING AND THE WORK ZONE, A SINGLE HEADED ARROW (M6-1) SHALL BE USED IN LIEU OF THE DOUBLE HEADED ARROW (M6-4),
- WHEN WORK IS BEING PERFORMED ON A SIDE ROAD OR DRIVEWAY, FOLLOW THE APPLICABLE STANDARD(S). THE DIRECTIONAL ARROW (M6-1 OR M6-4) SHALL BE COVERED OR REMOVED WHEN NO LONGER CONSISTENT WITH THE TRAFFIC CONTROL SET-UP.
- ADVANCE WARNING SIGNS ARE TO BE OMITTED ON DRIVEWAYS UNLESS OTHERWISE SPECIFIED IN THE PLANS OR BY THE ENGINEER.
- THE TRAFFIC CONTROL AND PROTECTION FOR SIDE ROADS, INTERSECTIONS, AND DRIVEWAYS SHALL BE INCLUDED IN THE COST OF SPECIFIED TRAFFIC CONTROL STANDARDS OR ITEMS.

All dimensions are in inches (millimeters) unless otherwise shown.

MODEL: D:\draft FILE NAME: p:\1108\BEBIDNTEG Illinois.gov\PWIDOT\Documents\DOT Offices\District 1\Projects\DIHS\22-234\CAD\Draws\CAD\Sheet\TC-10.dgn

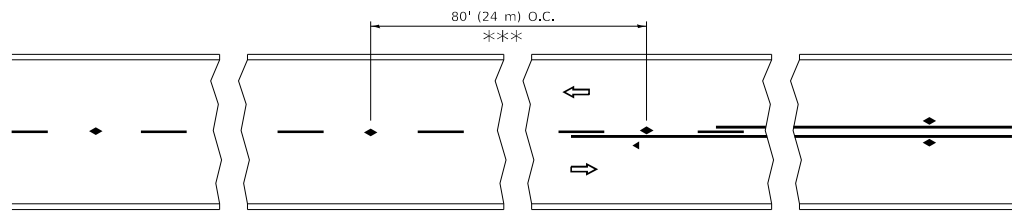
USER NAME = footemj	DESIGNED - L.H.A.	REVISED - A. HOUSEH 10-15-96
PLOT SCALE = 50,0000 ' / in.	CHECKED -	REVISED - T. RAMMACHER 01-06-00
PLOT DATE = 3/4/2019	DATE - 06-89	REVISED - A. SCHUETZE 07-01-13
		REVISED - A. SCHUETZE 09-15-16

**STATE OF ILLINOIS
DEPARTMENT OF TRANSPORTATION**

**TRAFFIC CONTROL AND PROTECTION FOR
SIDE ROADS, INTERSECTIONS, AND DRIVEWAYS**

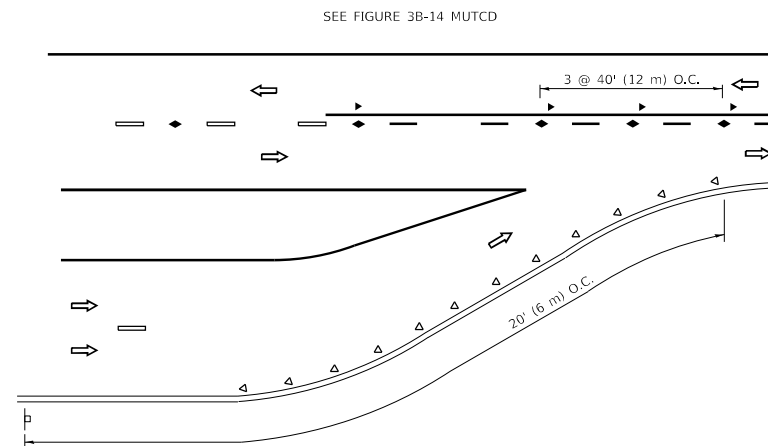
SCALE: NONE SHEET 1 OF 1 SHEETS STA. TO STA.

F.A.P. RTE.	SECTION	COUNTY	TOTAL SHEETS	SHEET NO.
347	2020-201-CVL	KANE	20	17
TC-10			CONTRACT NO. 62M73	
ILLINOIS FED. AID PROJECT				

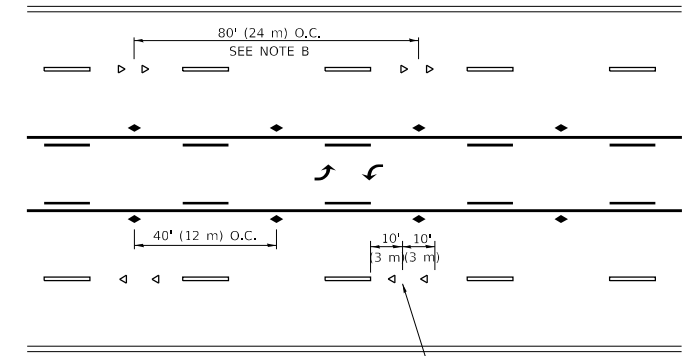


*** REDUCE TO 40' (12 m) O.C. ON CURVES WITH POSTED OR ADVISORY SPEED 45 M.P.H. (70 km/h) OR LESS.

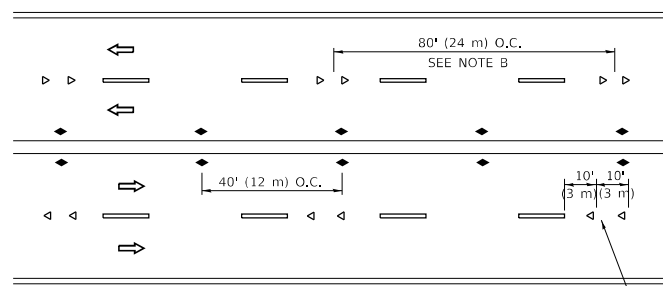
TWO-LANE/TWO-WAY



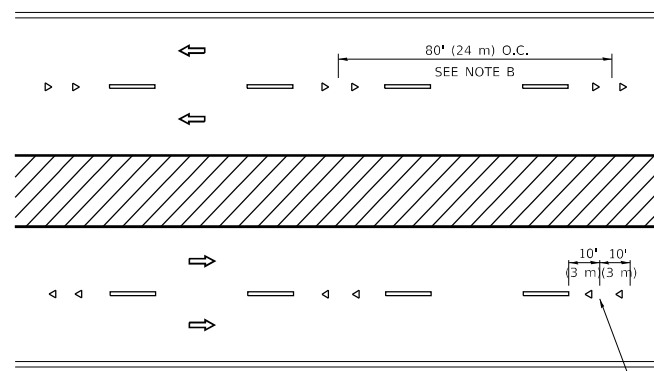
LANE REDUCTION TRANSITION



TWO-WAY LEFT TURN



MULTI-LANE/UNDIVIDED



MULTI-LANE/DIVIDED

GENERAL NOTES

1. MARKERS USED WITH DASHED LINES SHALL BE CENTERED IN THE GAP BETWEEN SEGMENTS.
2. MARKERS USED ADJACENT TO SOLID LINES SHALL BE OFFSET 2 TO 3 (50 TO 75) TOWARD TRAFFIC AS SHOWN.
3. MARKERS THROUGH TANGENTS LESS THAN 500' (150 m) IN LENGTH BETWEEN CURVES SHALL BE INSTALLED AT THE LESSER OF THE TWO CURVE SPACINGS.
4. MARKERS ARE TO BE USED ADJACENT TO BOTH SOLID WHITE LINES IN DUAL LEFT TURN LANES

SYMBOLS

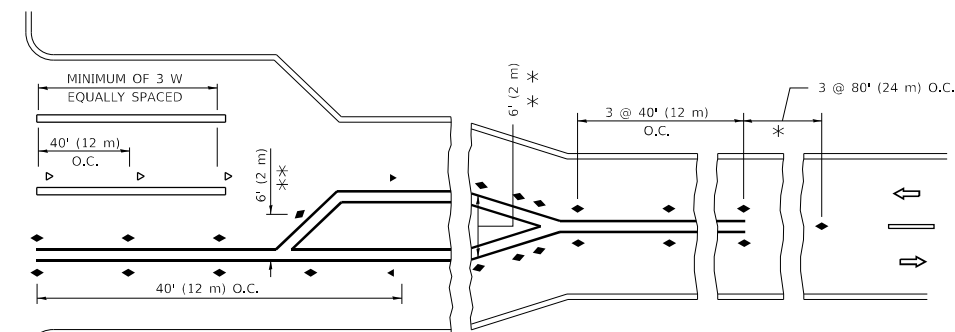
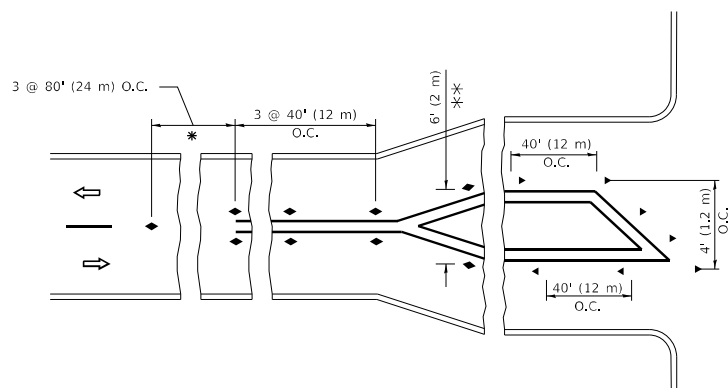
- YELLOW STRIPE
- WHITE STRIPE
- ◀ ONE-WAY AMBER MARKER
- ◀ ONE-WAY CRYSTAL MARKER (W/O)
- ◆ TWO-WAY AMBER MARKER

LANE MARKER NOTES

- A. USE DOUBLE LANE LINE MARKERS SPACED AS SHOWN.
- B. REDUCE TO 40' (12 m) O.C. ON CURVES WHERE ADVISORY SPEEDS ARE 10 M.P.H (20 km/h) LOWER THAN POSTED SPEEDS.

DESIGN NOTES

1. DOUBLE LANE LINE MARKERS SHALL BE USED UNLESS SPECIFIED OTHERWISE.
2. EXCEPT AS SHOWN ON THE LANE REDUCTION TRANSITION AND FREEWAY EXIT RAMP DETAIL, MARKERS ARE NOT TO BE SPECIFIED ON RIGHT EDGE LINES.
3. THE EXACT MARKER LIMITS, SPACING, AND COLOR SHALL BE INCLUDED IN THE PLANS WHEN STANDARD SPECIFICATIONS ARE NOT BEING USED.
4. MARKERS SHOULD NOT BE USED ALONGSIDE CURBS EXCEPT FOR EXTREMELY SHORT SECTIONS OF CURBS WHERE NOT MORE THAN TWO MARKERS WOULD BE INVOLVED.



* SEE TWO-LANE/TWO-WAY WHERE MARKERS CONTINUE
 *** WHERE THE MEDIAN WIDTH IS 6' (2 m) OR LESS USE TWO-WAY MARKERS.

TURN LANES

All dimensions are in inches (millimeters) unless otherwise shown.

MODEL: D:\default...
 FILE NAME: p:\u110848E\BID\NTEC...
 PROJECTS:\DHS\22-234\CAD\Drawings\CAD\Sheet\11.dgn

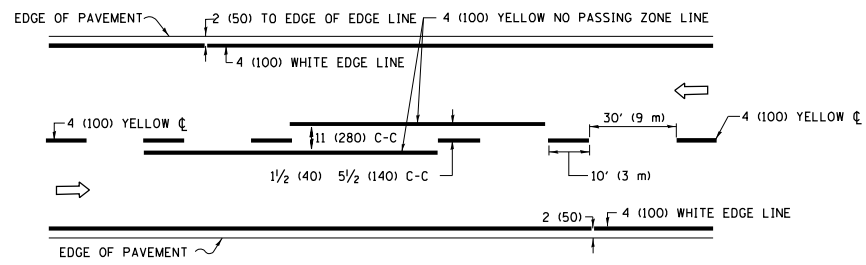
USER NAME = footemj	DESIGNED -	REVISED - T. RAMMACHER 03-12-99
	DRAWN -	REVISED - T. RAMMACHER 01-06-00
PLOT SCALE = 50,0000 ' / in.	CHECKED -	REVISED - C. JUCIUS 09-09-09
PLOT DATE = 3/4/2019	DATE -	REVISED - C. JUCIUS 07-01-13

**STATE OF ILLINOIS
 DEPARTMENT OF TRANSPORTATION**

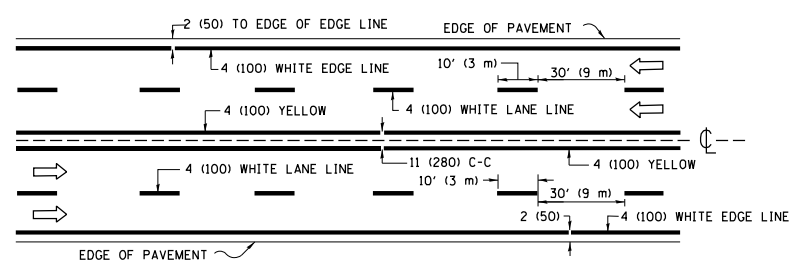
**TYPICAL APPLICATIONS
 RAISED REFLECTIVE PAVEMENT MARKERS (SNOW-PLOW RESISTANT)**

SCALE: NONE SHEET 1 OF 1 SHEETS STA. TO STA.

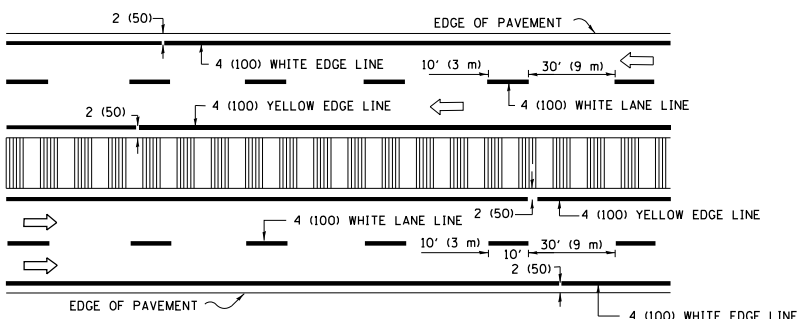
F.A.P. RTE.	SECTION	COUNTY	TOTAL SHEETS	SHEET NO.
347	2020-201-CVL	KANE	20	18
TC-11		CONTRACT NO. 62M73		
		ILLINOIS	FED. AID PROJECT	



2-LANE ROADWAY

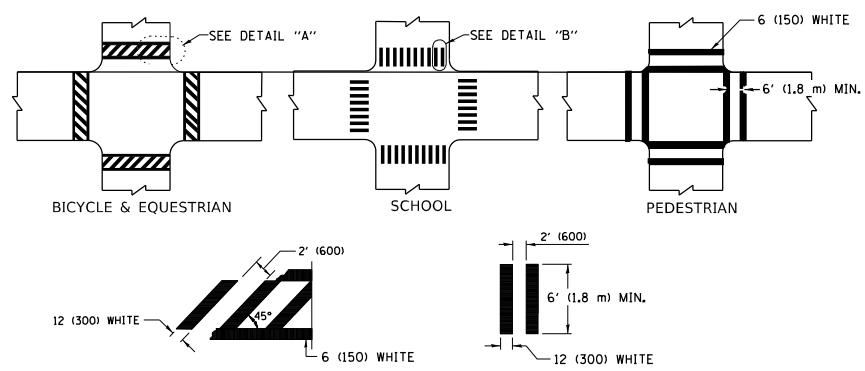


MULTI-LANE UNDIVIDED



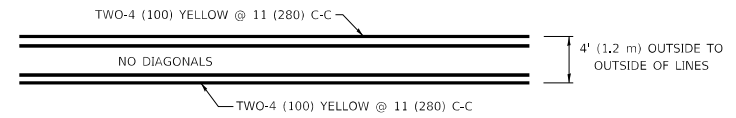
MULTI-LANE DIVIDED WITH MEDIAN

TYPICAL LANE AND EDGE LINE MARKING

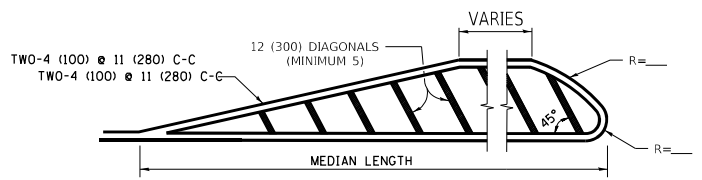


TYPICAL CROSSWALK MARKING

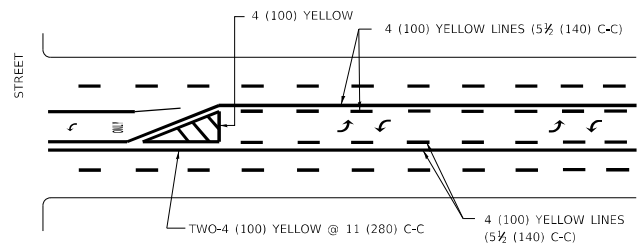
* MARKINGS SHALL BE INSTALLED PARALLEL TO THE CENTERLINE OF THE ROAD WHICH IT CROSSES



4' (1.2 m) WIDE MEDIANS ONLY

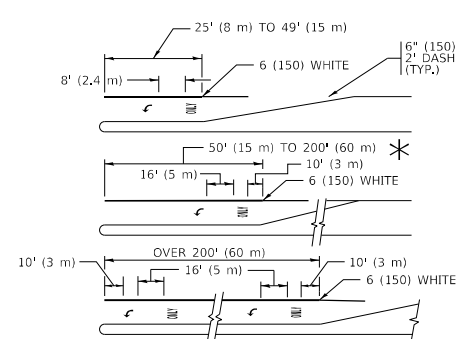


MEDIANS OVER 4' (1.2 m) WIDE



TYPICAL PAINTED MEDIAN MARKING

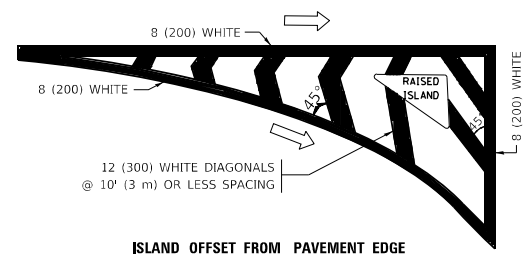
MEDIAN WITH TWO-WAY LEFT TURN LANE



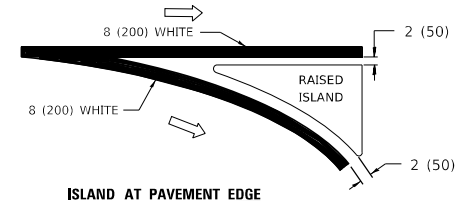
TYPICAL LEFT (OR RIGHT) TURN LANE

TYPICAL TURN LANE MARKING

FULL SIZE LETTERS 8' (2.4 m) AND ARROWS SHALL BE USED.
 AREA = 15.6 SQ. FT. (1.5 m²) ONLY AREA = 20.8 SQ. FT. (1.9 m²)
 * TURN LANES IN EXCESS OF 400' (120 m) IN LENGTH MAY HAVE AN ADDITIONAL SET OF ARROW - "ONLY" INSTALLED MIDWAY BETWEEN THE OTHER TWO SETS OF ARROW - "ONLY".

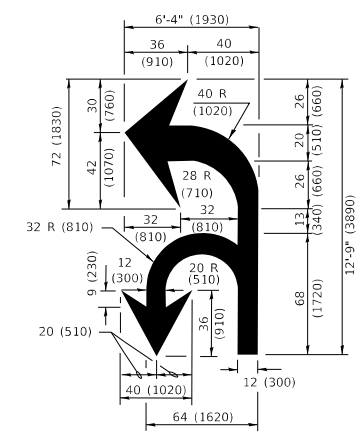


ISLAND OFFSET FROM PAVEMENT EDGE

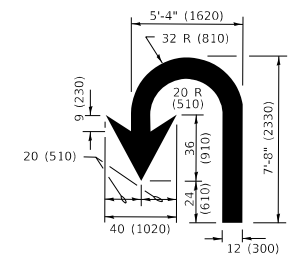


ISLAND AT PAVEMENT EDGE

TYPICAL ISLAND MARKING



COMBINATION LEFT AND U-TURN



U-TURN

LANE REDUCTION TRANSITION

* LANE REDUCTION ARROWS REQUIRED AT SPEEDS OF 45 MPH OR GREATER OR WHEN SPECIFIED IN PLANS.

D(FT)	SPEED LIMIT
345	30
425	35
500	40
580	45
665	50
750	55

TYPE OF MARKING	WIDTH OF LINE	PATTERN	COLOR	SPACING / REMARKS
CENTERLINE ON 2 LANE PAVEMENT	4 (100)	SKIP-DASH	YELLOW	10' (3 m) LINE WITH 30' (9 m) SPACE
CENTERLINE ON MULTI-LANE UNDIVIDED PAVEMENT	2 @ 4 (100)	SOLID	YELLOW	11 (280) C-C
NO PASSING ZONE LINES: FOR ONE DIRECTION FOR BOTH DIRECTIONS	4 (100) 2 @ 4 (100)	SOLID SOLID	YELLOW YELLOW	5 1/2 (140) C-C FROM SKIP-DASH CENTERLINE 11 (280) C-C OMIT SKIP-DASH CENTERLINE BETWEEN
LANE LINES	4 (100) 5 (125) ON FREEWAYS	SKIP-DASH SKIP-DASH	WHITE WHITE	10' (3 m) LINE WITH 30' (9 m) SPACE
DOTTED LINES (EXTENSIONS OF CENTER, LANE OR TURN LANE MARKINGS)	SAME AS LINE BEING EXTENDED	SKIP-DASH	SAME AS LINE BEING EXTENDED	2' (600) LINE WITH 6' (1.8 m) SPACE
EDGE LINES	4 (100)	SOLID	YELLOW-LEFT WHITE-RIGHT	OUTLINE MEDIANS IN YELLOW
TURN LANE MARKINGS	6 (150) LINE; FULL SIZE LETTERS & SYMBOLS (8' (2.4m))	SOLID	WHITE	SEE TYPICAL TURN LANE MARKING DETAIL
TWO WAY LEFT TURN MARKING	2 @ 4 (100) EACH DIRECTION 8' (2.4m) LEFT ARROW	SKIP-DASH AND SOLID IN PAIRS	YELLOW WHITE	10' (3 m) LINE WITH 30' (9 m) SPACE FOR SKIP-DASH; 5 1/2 (140) C-C BETWEEN SOLID LINE AND SKIP-DASH LINE SEE TYPICAL TWO-WAY LEFT TURN MARKING DETAIL
CROSSWALK LINES (PEDESTRIAN) A. DIAGONALS (BIKE & EQUESTRIAN) B. LONGITUDINAL BARS (SCHOOL)	2 @ 6 (150) 12 (300) @ 45° 12 (300) @ 90°	SOLID SOLID SOLID	WHITE WHITE WHITE	NOT LESS THAN 6' (1.8 m) APART 2' (600) APART SEE TYPICAL CROSSWALK MARKING DETAILS.
STOP LINES	24 (600)	SOLID	WHITE	PLACE 4' (1.2 m) IN ADVANCE OF AND PARALLEL TO CROSSWALK, IF PRESENT. OTHERWISE, PLACE AT DESIRED STOPPING POINT, PARALLEL TO CROSSROAD CENTERLINE, WHERE POSSIBLE
PAINTED MEDIANS	2 @ 4 (100) WITH 12 (300) DIAGONALS @ 45° NO DIAGONALS USED FOR 4' (1.2 m) WIDE MEDIANS	SOLID	YELLOW: TWO WAY TRAFFIC WHITE: ONE WAY TRAFFIC	11 (280) C-C FOR THE DOUBLE LINE SEE TYPICAL PAINTED MEDIAN MARKING.
GORE MARKING AND CHANNELIZING LINES	8 (200) WITH 12 (300) DIAGONALS @ 45°	SOLID	WHITE	DIAGONALS: 15' (4.5 m) C-C (LESS THAN 30MPH (50 km/h)) 20' (6 m) C-C 30MPH (50 km/h) TO 45MPH (70 km/h) 30' (9 m) C-C (OVER 45MPH (70 km/h))
RAILROAD CROSSING	24 (600) TRANSVERSE LINES "RR" IS 8' (1.8 m) LETTERS: 16 (400) LINE FOR "X"	SOLID	WHITE	SEE STATE STANDARD 780001 AREA OF: "R"=3.6 SQ. FT. (0.33 m ²) EACH "X"=54.0 SQ. FT. (5.0 m ²)
SHOULDER DIAGONALS (REQUIRED FOR SHOULDERS > 8')	12 (300) @ 45°	SOLID	WHITE - RIGHT YELLOW - LEFT	50' (15 m) C-C (LESS THAN 30MPH (50 km/h)) 75' (25 m) C-C (30 MPH (50 km/h) TO 45MPH (70 km/h)) 150' (45 m) C-C (OVER 45MPH (70 km/h))
U TURN ARROW	SEE DETAIL	SOLID	WHITE	16.3 SF
2 ARROW COMBINATION LEFT AND U TURN	SEE DETAIL	SOLID	WHITE	30.4 SF

FOR FURTHER DETAILS ON PAVEMENT MARKING REFER TO STANDARD SPECIFICATIONS FOR ROAD AND BRIDGE CONSTRUCTION AND STATE STANDARD 780001.

All dimensions are in inches (millimeters) unless otherwise shown.

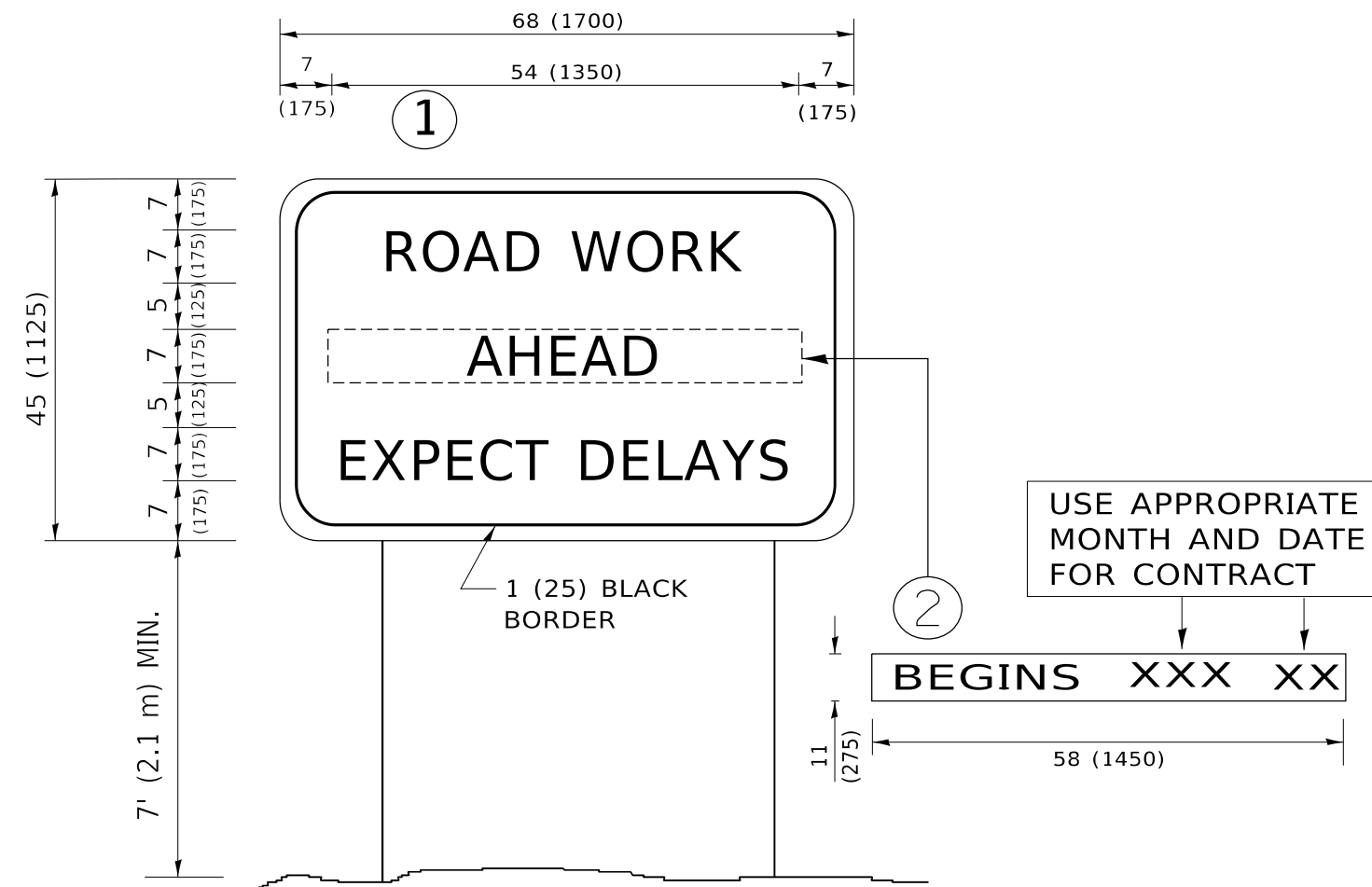
MODEL: D:\default...
 FILE NAME: p:\u0008\EBID\ITEC...
 PROJECTS:\DHS\422-234\CD\Drawings\CD\Sheet\TC13.dwg

USER NAME = footemj	DESIGNED - EVERS	REVISED - C. JUCIUS 09-09-09
PLOT SCALE = 50.0000" / in.	CHECKED -	REVISED - C. JUCIUS 07-01-13
PLOT DATE = 3/4/2019	DATE - 03-19-90	REVISED - C. JUCIUS 12-21-15
		REVISED - C. JUCIUS 04-12-16

**STATE OF ILLINOIS
 DEPARTMENT OF TRANSPORTATION**

DISTRICT ONE		F.A.P. RTE.	SECTION	COUNTY	TOTAL SHEETS	SHEET NO.
TYPICAL PAVEMENT MARKINGS		347	2020-201-CVL	KANE	20	19
SCALE: NONE		SHEET 1 OF 2 SHEETS		STA. TO STA.	ILLINOIS FED. AID PROJECT	

TC-13		CONTRACT NO. 62M73	
--------------	--	--------------------	--



NOTES:

1. USE BLACK LETTERING ON ORANGE BACKGROUND.
2. ERECT SIGNS IN ADVANCE OF THE LOCATION FOR THE "ROAD CONSTRUCTION AHEAD" SIGN AT LOCATIONS AS DIRECTED BY THE ENGINEER.
3. ERECT SIGN ① WITH INSTALLED PANEL ② ONE WEEK PRIOR TO THE START OF CONSTRUCTION.
4. REMOVE PANEL ② SOON AFTER THE START OF CONSTRUCTION.
5. SEE SPECIAL PROVISION FOR "TEMPORARY INFORMATION SIGNING" FOR ADDITIONAL INFORMATION.
6. ONE SIGN ASSEMBLY EQUALS 25.70 SQ. FT. (2.3 SQ. M.)
7. SHALL BE PAID FOR AS TEMPORARY INFORMATION SIGNING.

ALL DIMENSIONS ARE IN INCHES (MILLIMETERS) UNLESS OTHERWISE SHOWN.

MODEL: D:\default
 FILE NAME: p:\1108\EBID\NTEC\Illinois.gov\RWIDOT\Documents\DOT_Offices\District_1\Projects\DH\5422\340\CAD\Drawings\CAD\Sheet\TC22.dgn

USER NAME = footemj	DESIGNED -	REVISED - R. MIRS 09-15-97
	DRAWN -	REVISED - R. MIRS 12-11-97
PLOT SCALE = 50.0000 ' / in.	CHECKED -	REVISED - T. RAMMACHER 02-02-99
PLOT DATE = 3/4/2019	DATE -	REVISED - C. JUCIUS 01-31-07

**STATE OF ILLINOIS
DEPARTMENT OF TRANSPORTATION**

**ARTERIAL ROAD
INFORMATION SIGN**

SCALE: NONE SHEET 1 OF 1 SHEETS STA. TO STA.

F.A.P. RTE.	SECTION	COUNTY	TOTAL SHEETS	SHEET NO.
347	2020-201-CVL	KANE	20	20
TC-22			CONTRACT NO. 62M73	
ILLINOIS FED. AID PROJECT				