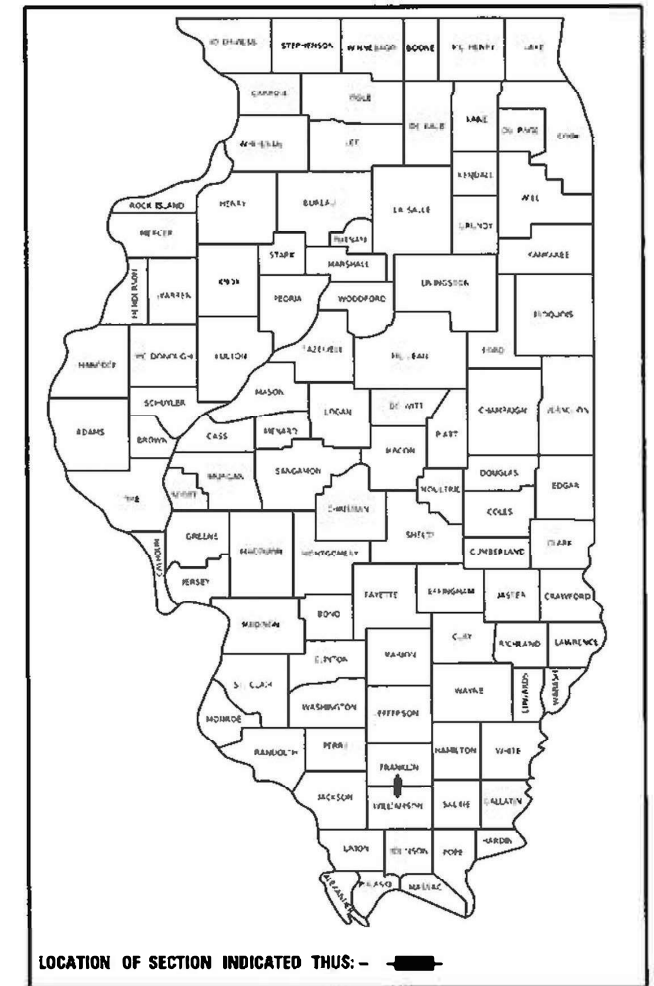


STATE OF ILLINOIS
DEPARTMENT OF TRANSPORTATION

F.A. RTE.	SECTION	COUNTY	TOTAL SHEETS	SHEET NO.
	D9 ADA Ramp 2021-1	VARIOUS	33	1
ILLINOIS			CONTRACT NO. 78812	
*FAS 2887 / FAP 873			Williamson/Franklin	

D-99-067-20



FOR INDEX OF SHEETS, SEE SHEET NO. 3

FOR SUMMARY OF QUANTITIES, SEE SHEETS NO. 5 - 7

FOR STRUCTURAL PAVEMENT DESIGN INFORMATION, SEE SHEET NO. NA

PROPOSED HIGHWAY PLANS

FAS 2887 / FAP 873 ROUTE IL 37 / IL 149
SECTION D9 ADA RAMP 2021-1
PROJECT STP-KOFS(057)
ADA RAMP UPGRADE
WILLIAMSON / FRANKLIN COUNTY

TRAFFIC DATA

(2021)	IL 37 JOHNSTON CITY	IL 149 WEST FRANKFORT
PV =	9,980	10,085
SU =	510	155
MU =	175	60
ADT =	10,665	10,300

C-99-086-20

TOWNSHIPS

HERRIN
FRANKFORT

DESIGN DESIGNATION : NA

COORDINATE SYSTEM : United States / State Plane 1983
Zone: Illinois East 1201

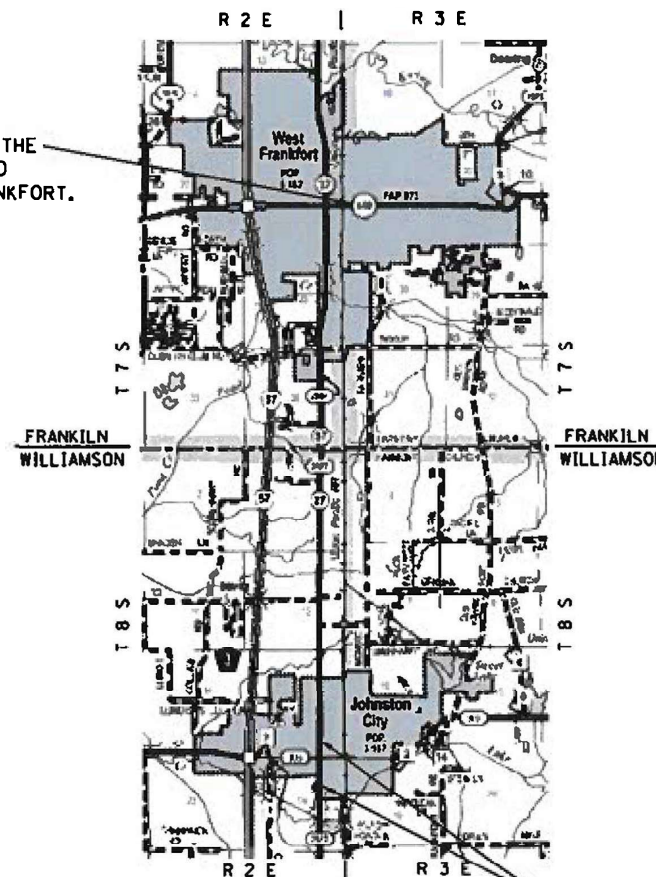
POSTED SPEED : 20 - 30 MPH

J.U.L.I.E.
JOINT UTILITY LOCATION INFORMATION FOR EXCAVATION
1-800-892-0123
OR 811

PROJECT ENGINEER: VALERIE ROLLA (618) 351-5214
PROJECT DESIGNER: JOHN A. BRANDON (618) 351-5319

CONTRACT NO. 78812

PROPOSED IMPROVEMENT AT THE
INTERSECTION OF IL 149 AND
JEFFERSON ST IN WEST FRANKFORT.



GROSS LENGTH = NA
NET LENGTH = NA

PROPOSED IMPROVEMENT BEGINS AT
THE INTERSECTION OF IL 37 &
4TH ST AND ENDS AT THE INTERSECTION
OF IL 37 & 8TH ST IN JOHNSTON CITY.



STATE OF ILLINOIS
DEPARTMENT OF TRANSPORTATION

SUBMITTED 03-19-2021

[Signature]
REGION FIVE ENGINEER

May 7, 2021
[Signature]
ENGINEER OF DESIGN AND ENVIRONMENT

May 7, 2021
[Signature]
DIRECTOR OF HIGHWAYS PROJECT IMPLEMENTATION

PRINTED BY THE AUTHORITY
OF THE STATE OF ILLINOIS

INDEX OF SHEETS

HIGHWAY STANDARDS

SHEET NO	DESCRIPTION
1	COVER SHEET
2	SIGNATURE SHEET
3	INDEX OF SHEETS AND HIGHWAY STANDARDS
4	GENERAL NOTES
5-7	SUMMARY OF QUANTITIES
8-9	SCHEDULES OF QUANTITIES
10	ALIGNMENTS LAYOUT AND GEOPAK ELEMENT IDENTIFICATION
11	CONTROL POINTS: HORIZONTAL AND VERTICAL TIES
12	LOCATION MAP AT IL 149 IN WEST FRANKFORT AND IL 37 IN JOHNSTON CITY
13-16	LOCATION 1 AT IL 149 & JEFFERSON ST IN WEST FRANKFORT (PLAN,REMOVAL AND DETAILS SHEETS)
17-18	LOCATION 2 AT IL 37 & 4TH ST IN JOHNSTON CITY (PLAN AND REMOVAL SHEET)
19-24	LOCATION 3 AT IL 37 & BROADWAY BLVD IN JOHNSTON CITY (PLAN,REMOVAL AND DETAILS SHEETS)
25-26	LOCATION 4 AT IL 37 & 8TH ST IN JOHNSTON CITY (PLAN AND REMOVAL SHEETS)
27-29	PEDESTRIAN SIGNAL HEAD AND PUSH BUTTON DETAIL
30	CROSSWALK PAVEMENT MARKING DETAIL AND EXISTING INLET WITH PROPOSED TIE BARS DETAIL
31-33	PROJECT DETAILS FOR CURB RAMPS

- 000001-08_STANDARDSYMBOLSABBREVIATIONS&PATTERNS-001
- 001001-02_AREASOFREINFREBARS
- 001006_DECIMALOFINCH&FOOT
- 424001-11_PERPENDICULARCURBRAMPS
- 424006-05_DIAGONALCURBRAMPS-054
- 424011-04_CORNERPARALLELCURBRAMPS
- 424016-05_MIDBLOCKCURBRAMPS
- 424021-06_DEPRESSEDCORNER-057
- 424026-03_ENTRANCEALLEYPEDESTRIANCROSSINGS
- 606001-07_CONCCURBTYP&COMBOCONCC&G
- 701001-02_OFFRDOP-2L2W-15FTMINFROMEOP
- 701006-05_OFFRDOP-2L2W-15FTTOEOP
- 701101-05_OFFRDOP-MULTILN-LESSTHAN15FTTOEOP
- 701106-02_OFFRDOP-MULTILN-MORETHAN15FTAWAY
- 701301-04_LNCLOSURE2L2W-SHORTTIMEOP
- 701311-03_LNCLOSURE2L2W-MOVINGOPDAYONLY
- 701501-06_URBANLNCLOSURE2L2W-UNDIVIDED
- 701502-09_URBANLNCLOSURE2L2WWITHDIRECTLEFTTURNLN
- 701801-06_SIDEWALKCORNERORCROSSWALKCLOSURE
- 701901-08_TRAFCNTRLDEVICES
- 780001-05_TYPICALPVMTRKINGS
- 805001-01_ELECSRVCINSTALLDETAILS
- 814001-03_HANDHOLES
- 821101-02_LUMINAIRE WRING IN POLE
- 825011-04_LIGHTINGCONTROLLERPEDESTALMOUNT240V
- 838001-01_BREAKAWAYDEVICES
- 857001-01_STDPHASEDESIGNATIONDIAGRAMS&PHASESEQ
- 862001-01_UPS
- 873001-02_TRAFSIGNALGROUND&BOND
- 876001-04_PEDESTRIANPUSHBUTTONPOST
- 878001-11_CONCRETEFOUNDATIONDETAILS
- 880006-01_TRFSIGNALMOUNTDETAILS-POST&BRACKETMOUNT

MODEL: Default
 FILE NAME: \\paulhammon.dot.illinois.gov\PWDOT\Documents\DOT_Offices\District 9\Projects\78812_CADData\CAD\Projects\0778812_Stra-Cur_Seg_Index.dgn

USER NAME = brandonja	DESIGNED -	REVISED -	STATE OF ILLINOIS DEPARTMENT OF TRANSPORTATION	INDEX OF SHEETS, COMMITMENTS AND STANDARDS		F.A. #	SECTION	COUNTY	TOTAL SHEETS	SHEET NO.
DRAWN -	REVISED -	-				D9 ADA Ramp 2021-1	VARIOUS	33	3	
PLOT SCALE = 100,0000' / in.	CHECKED -	REVISED -				CONTRACT NO. 78812				
PLOT DATE = 3/19/2021	DATE -	REVISED -		SCALE:	SHEET OF SHEETS	STA. TO STA.	ILLINOIS FED. AID PROJECT			

COMMITMENTS

HMA SURFACE IN THE EXISTING GUTTER FLAGS SHALL BE REMOVED AND INCLUDED IN THE COST COMBINATION CONCRETE CURB AND GUTTER REMOVAL.

THE CONTRACTOR SHALL CORE HOLES IN PROPOSED SIDEWALK FOR PLACEMENT OF SIGN POSTS, AS DIRECTED BY THE ENGINEER. THE COST OF THIS WORK WILL NOT BE PAID FOR SEPERATELY, BUT SHALL BE CONSIDERED AS INCLUDED IN THE CONTRACT UNIT PRICE FOR PORTLAND CEMENT CONCRETE SIDEWALK 5 INCH. THE GAP BETWEEN THE POST AND THE CORE LIMITS SHALL BE FILLED WITH POLYURETHANE SEALANT (LIMESTONE COLOR).

THE RADIUS MEASUREMENTS FOUND ON THE PLAN SHEETS ARE TAKEN FROM THE FLOW-LINE OF THE PROPOSED GUTTER.

AT VARIOUS LOCATIONS, IT MAY BE NECESSARY TO TRANSITION PROPOSED CONCRETE CURB TO MEET EXISTING CURBS OR GUTTERS. THE MINIMUM LENGTH OF TRANSITIONAL CURB SHALL BE 10 FEET, UNLESS DIRECTED OTHERWISE BY THE ENGINEER.

COMMITMENTS: NONE

MODEL: Default
 FILE NAME: \\paulhammon.dot.illinois.gov\PIWDOT\Documents\DOT_Offices\District 9\Projects\78812\CADData\CAD\Drawings\0778812-Struc-Cur_Seg_Index.dgn

	USER NAME = brandonja	DESIGNED -	REVISED -	STATE OF ILLINOIS DEPARTMENT OF TRANSPORTATION	GENERAL NOTES				F.A. RTE.	SECTION	COUNTY	TOTAL SHEETS	SHEET NO.
		DRAWN -	REVISED -		~	D9 ADA Ramp 2021-1	VARIOUS	33	4				
	PLOT SCALE = 100,0000 ' / in.	CHECKED -	REVISED -		CONTRACT NO. 78812								
	PLOT DATE = 3/19/2021	DATE -	REVISED -		SCALE:	SHEET	OF	SHEETS	STA.	TO	STA.	ILLINOIS	FED. AID PROJECT

SUMMARY OF QUANTITIES - CONT

COUNTY:	COUNTY:	WILLIAMSON	FRANKLIN
ROUTE:	ROUTE:	FAS 2887 (IL 37)	FAP (IL 149)
FUNDING:	FUNDING:	80% FEDERAL 20% STATE	80% FEDERAL 20% STATE
LOCATION:	LOCATION:	RURAL	URBAN

CODE NUMBER	ITEM DESCRIPTION	UNIT	TOTAL QUANTITY	ROADWAY	
				0021	0021
* 87301246	ELECTRIC CABLE IN CONDUIT, SIGNAL NO. 14 5C	FOOT	1,204	1,204	0
* 87301900	ELECTRIC CABLE IN CONDUIT, EQUIPMENT GROUNDING CONDUCTOR, NO. 6 1C	FOOT	551	551	0
* 87500600	TRAFFIC SIGNAL POST, 10 FT.	EACH	4	4	0
* 87600100	PEDESTRIAN PUSH-BUTTON POST, TYPE I	EACH	1	0	1
* 87800100	CONCRETE FOUNDATION, TYPE A	FOOT	12	12	0
* 87900100	DRILL EXISTING FOUNDATION	EACH	1	1	0
* 87900200	DRILL EXISTING HANDHOLE	EACH	4	4	0
* 88102740	PEDESTRIAN SIGNAL HEAD, LED, 2-FACE, BRACKET MOUNTED	EACH	4	4	0
* 88800100	PEDESTRIAN PUSH-BUTTON	EACH	9	8	1
* 89502200	MODIFY EXISTING CONTROLLER	EACH	1	1	0
* 89502350	REMOVE AND REINSTALL ELECTRIC CABLE FROM CONDUIT	FOOT	24	0	24
* X0327235	LOCATING UNDERGROUND UTILITIES	FOOT	200	200	0
* X1400423	REMOVE EXISTING PEDESTRIAN PUSH BUTTON	EACH	1	0	1
* X0140115	HANDHOLE TO BE ADJUSTED	EACH	2	0	2

* SPECIALTY ITEM

REV. - MS

MODEL: Default
FILE: M:\GIS\Projects\GIS\Projects\DOT\Office\District\9\Project\DOT\Documents\DOT\Office\District\9\Project\DOT\9\B13\CAD\B13\CAD\Sheet\0578812\Sheet-Cv_Sea_Index.dgn

USER NAME = brandonja	DESIGNED -	REVISED -	STATE OF ILLINOIS DEPARTMENT OF TRANSPORTATION	SUMMARY OF QUANTITIES				F.A. * RTE.	SECTION	COUNTY	TOTAL SHEETS	SHEET NO.	
PLOT SCALE = 100.0000' / in.	DRAWN -	REVISED -		SCALE:	SHEET	OF	SHEETS	STA.	TO	STA.	VARIOUS	33	7
PLOT DATE = 3/19/2021	CHECKED -	REVISED -		ILLINOIS FED. AID PROJECT									
	DATE -	REVISED -		*FAS 2887 / FAP 873 Williamson/Franklin									

CURB RAMPS SCHEDULE

LOCATION	CURB REMOVAL	COMB CC&G, REMOVAL	SIDEWALK REMOVAL	CONC CURB, TY B	COMB CC&G, TYB-6.24	INLETS TO BE ADJUSTED	HANDHOLE TO BE ADJUSTED	TIE BARS 3/4"	PC CONC SIDEWALK 5"	DETECTABLE WARNING	CLASS 2 SEEDING	NITROGEN FERTILIZER	PHOSPHORUS FERTILIZER	POTASSIUM FERTILIZER	AGG. GROUND LIMESTONE	EROSION CONTROL BLANKET	CLASS 7 SEEDING	TEMP EROSION CONTROL SEEDING	COMMENTS
	FT	FOOT	SQ FT	FOOT	FOOT	FACH	FACH	FACH	SQ FT	SQ FT	ACRF	POUND	POUND	POUND	TON	SQ YD	ACRF	POUND	
WEST FRANKFORT, IL																			
LOCATION 1 (IL 149 & JEFFERSON ST)																			
NE QUADRANT	0	28.4	169.1	0	28.6	0	1	0	180.6	22.6	0.02	1.8	1.8	1.8	0.04	96.8	0.02	2	STD 424021
SE QUADRANT	0	46.2	391.3	0	46.2	1	1	0	390.1	22.0	0.02	1.8	1.8	1.8	0.04	96.8	0.02	2	STD 424001
JOHNSTON CITY, IL																			
LOCATION 2 (IL 37 & 4TH ST)																			
NW QUADRANT	7.0	23.0	89.9	41.4	23.0	0	0	0	105.9	17.7	0.02	1.8	1.8	1.8	0.04	96.8	0.02	2	DETAIL PD-01C
SE QUADRANT	8.0	26.3	164.8	54.8	26.3	0	0	8	287.6	40.9	0.02	1.8	1.8	1.8	0.04	96.8	0.02	2	DETAIL PD-05B
NE QUADRANT	6.0	38.5	182.9	98.7	38.5	0	0	12	247.1	26.9	0.02	1.8	1.8	1.8	0.04	96.8	0.02	2	DETAIL PD-06A
SW QUADRANT	10.0	21.0	55.3	39.2	21.0	0	0	6	99.2	14.3	0.02	1.8	1.8	1.8	0.04	96.8	0.02	2	DETAIL PD-01C
LOCATION 3 (IL 37 & BROADWAY BLVD)																			
NW QUADRANT	23.7	29.1	155.6	21.0	29.6	0	0	0	300.4	27.6	0.02	1.8	1.8	1.8	0.04	96.8	0.02	2	STD 424011
NE QUADRANT	12.1	37.2	162.0	49.5	37.2	0	0	8	195.1	36.9	0	0	0	0	0	0	0	0	STD 424011
SE QUADRANT	6.0	21.1	130.1	13.8	19.5	0	0	8	161.7	25.2	0.02	1.8	1.8	1.8	0.04	96.8	0.02	2	STD 424011
SW QUADRANT	13.8	25.3	185.0	38.1	25.4	0	0	0	158.8	29.7	0	0	0	0	0	0	0	0	STD 424011
LOCATION 4 (IL 37 & 8TH ST)																			
NW QUADRANT	24.5	21.9	130.0	24.5	21.9	0	0	6	167.1	29.2	0.02	1.8	1.8	1.8	0.04	96.8	0.02	2	DETAIL PD-01C
NE QUADRANT	6.0	23.5	201.8	85.3	23.5	0	0	12	252.5	22.4	0.02	1.8	1.8	1.8	0.04	96.8	0.02	2	DETAIL PD-06A
PROJECT TOTALS	118	342	2018	467	341	1	2	60	2547	316.0	0.20	18.0	18.0	18.0	0.40	968.0	0.20	20	

NOTE: ALL BORROW THAT MAY BE REQUIRED FOR SEEDING OF THE GRASS MEDIAN LOCATIONS SHALL BE INCLUDED IN THE COST OF PCC SIDEWALK 5 INCH.

MODEL: Default
 FILE NAME: \\p01h1m00m.dad\illinois.gov\PIWDOT\Documents\DOT_Offices\District_9\Projects\78812_CAD\DATA\CAD\Drawings\0778812_Shr8_Typ_Sch_Ties_Curb&Elements.dwg

USER NAME = brandonja	DESIGNED -	REVISED -
	DRAWN -	REVISED -
PLOT SCALE = 100,0000' / in.	CHECKED -	REVISED -
PLOT DATE = 3/19/2021	DATE -	REVISED -

**STATE OF ILLINOIS
DEPARTMENT OF TRANSPORTATION**

CURB RAMPS SCHEDULE AND SEEDING

SCALE: SHEET OF SHEETS STA. TO STA.

F.A. RTE.	SECTION	COUNTY	TOTAL SHEETS	SHEET NO.
-	D9 ADA Ramp 2021-1	VARIOUS	33	8
CONTRACT NO. 78812				

SIDEWALK SIGNALS SCHEDULE

LOCATION	LOCATING UNDERGROUND CABLE	ELEC. CABLE IN CONDUIT, SIGNAL NO. 14 3C	ELEC. CABLE IN CONDUIT, SIGNAL NO. 14 5C	ELEC. CABLE IN CONDUIT, EQUIPMENT GROUNDING CONDUCTOR, NO. 6 1C	REMOVE AND REINSTALL ELECTRIC CABLE FROM CONDUIT	UNDERGROUND CONDUIT, PVC, 2.5" DIA.	PED. PUSH-BUTTON POST, TYPE I	PED. PUSH-BUTTON	DRILL EXISTING HANDHOLE	DRILL EXISTING FOUNDATION	REMOVE EXISTING PED. PUSH BUTTON	TRAFFIC SIGNAL POST, 10 FT	CONCRETE FOUNDATION, TYPE A	MODIFY EXISTING CONTROLLER CABINET	PED. SIGNAL HEAD, LED, 2-FACE, BRACKET MOUNTED	
	FOOT	FOOT	FOOT	FOOT	FOOT	FOOT	EACH	EACH	EACH	EACH	EACH	FOOT	FOOT	EACH	EACH	
WEST FRANKFORT, IL																
LOCATION 1 (IL 149 & JEFFERSON ST)																
SW QUADRANT	50	0	0	0	24	8	1	1	0	0	1	0	0	0	0	
JOHNSTON CITY, IL																
LOCATION 3 (IL 37 & BROADWAY BLVD)																
NW QUADRANT	50	290	304	139	0	12	0	2	1	0	0	1	3	0	1	
NE QUADRANT	50	63	77	26	0	4	0	2	1	1	0	1	3	1	1	
SE QUADRANT	50	314	328	235	0	16	0	2	1	0	0	1	3	0	1	
SW QUADRANT	50	481	495	151	0	5	0	2	1	0	0	1	3	0	1	
PROJECT TOTALS	250	1148	1204	551	24	45	1	9	4	1	1	4	12	1	4	

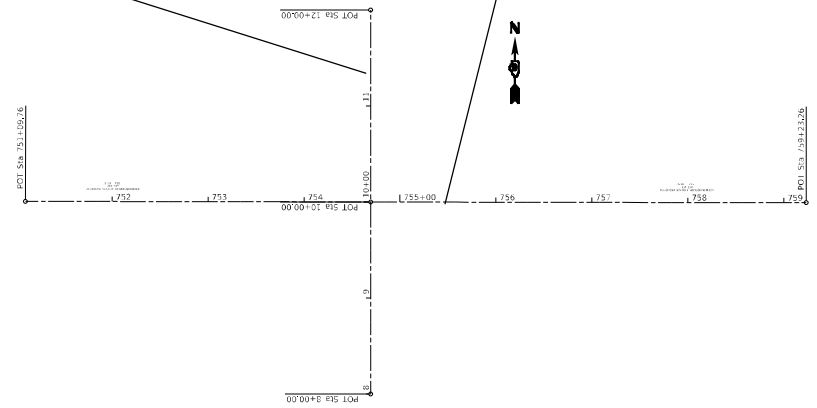
PAVEMENT MARKING SCHEDULE

LOCATION	MODIFIED URETHANE PAVEMENT MARKING			PAVEMENT MARKING REMOVAL - GRINDING SQ FT	REMARKS
	WHITE				
	LINE 6" FOOT	LINE 12" FOOT	LINE 24" FOOT		
WEST FRANKFORT, IL					
LOCATION 1 (IL 149 & JEFFERSON ST)					
NE QUADRANT TO SE QUADRANT	114	75	27	111	STOP BAR & CROSSWALK
JOHNSTON CITY, IL					
LOCATION 3 (IL 37 & BROADWAY ST)					
SE QUADRANT TO NE QUADRANT	141	90	24	60	STOP BAR & CROSSWALK
NE QUADRANT TO NW QUADRANT	140	95	32	70	STOP BAR & CROSSWALK
NW QUADRANT TO SW QUADRANT	146	100	28	63	STOP BAR & CROSSWALK
SW QUADRANT TO SE QUADRANT	148	100	30	70	STOP BAR & CROSSWALK
	689	460	141	374	

MODEL: Default
 FILE NAME: p:\planningroom.dwg
 PROJECT: 78812.CADD\DATA\CAD\PROJECTS\0778812_SIB\8-Typ_Sch_Tics_Ceosa\Elements.dwg

USER NAME = brandonja PLOT SCALE = 100,0000' / in. PLOT DATE = 3/19/2021	DESIGNED - DRAWN - CHECKED - DATE -	REVISED - REVISED - REVISED - REVISED -	STATE OF ILLINOIS DEPARTMENT OF TRANSPORTATION	SIDEWALK SIGNALS AND PAVEMENT MARKING SCHEDULE	F.A. RTE. - SECTION D9 ADA Ramp 2021-1 COUNTY VARIOUS TOTAL SHEETS 33 SHEET NO. 9 CONTRACT NO. 78812
--	--	--	---	---	---

CHAIN - JEFFERSON

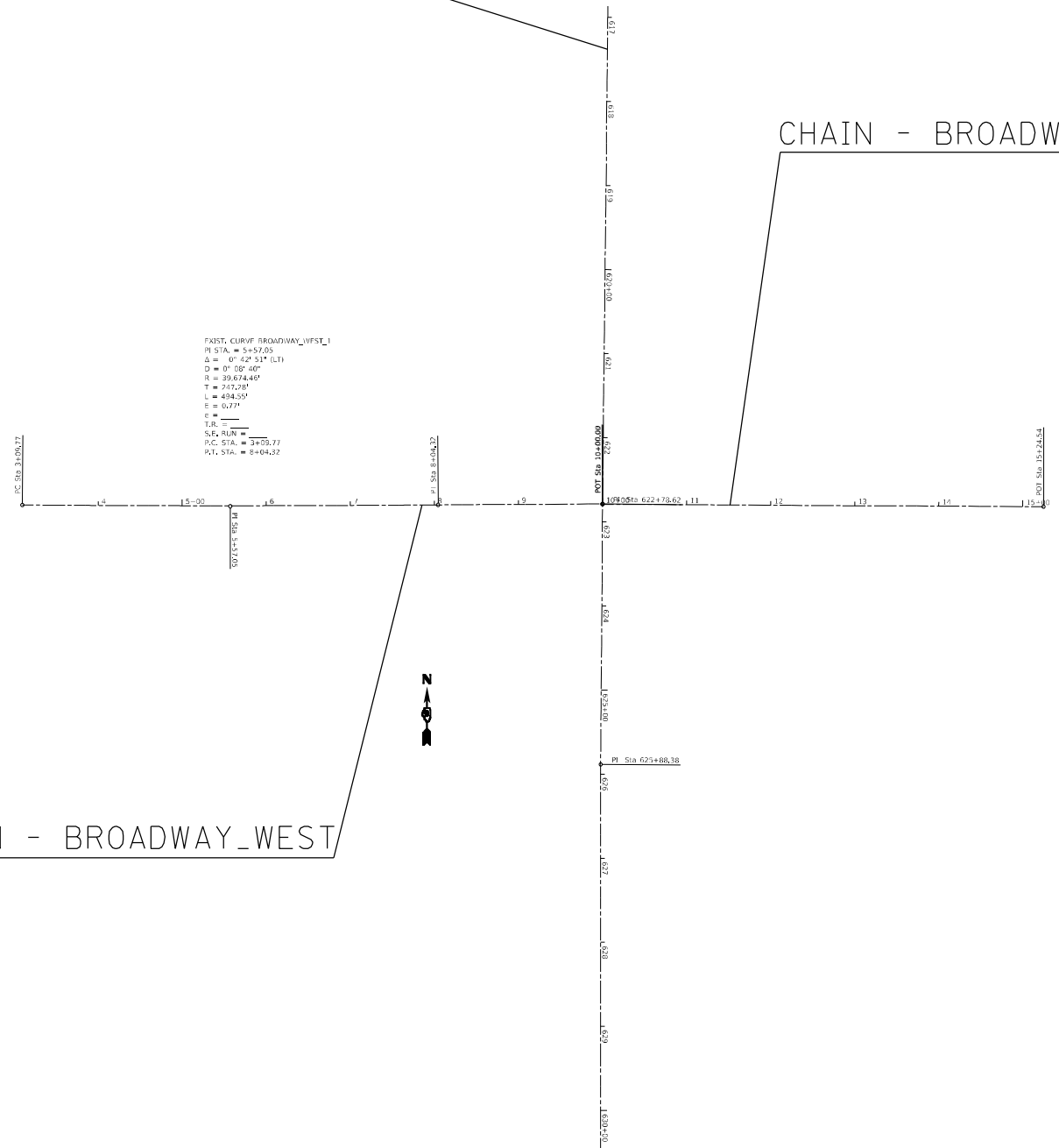


CHAIN - IL149

CHAIN - IL37

CHAIN - BROADWAY_EAST

CHAIN - BROADWAY_WEST



MODEL: Default
 FILE NAME: p:\pub\mroom.dwg
 ILLINOIS DOT
 PROJECT: 78812_CADD\DATA\CAD\Drawings\DOT_Offices\Drawings\78812_Subs\JTB_Sch_Tics_GeopakElements.dwg

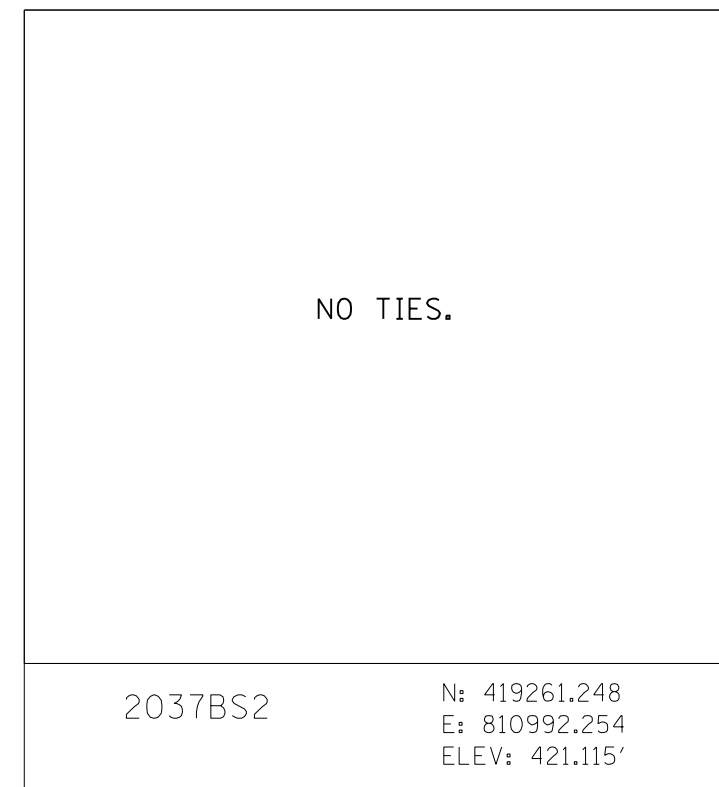
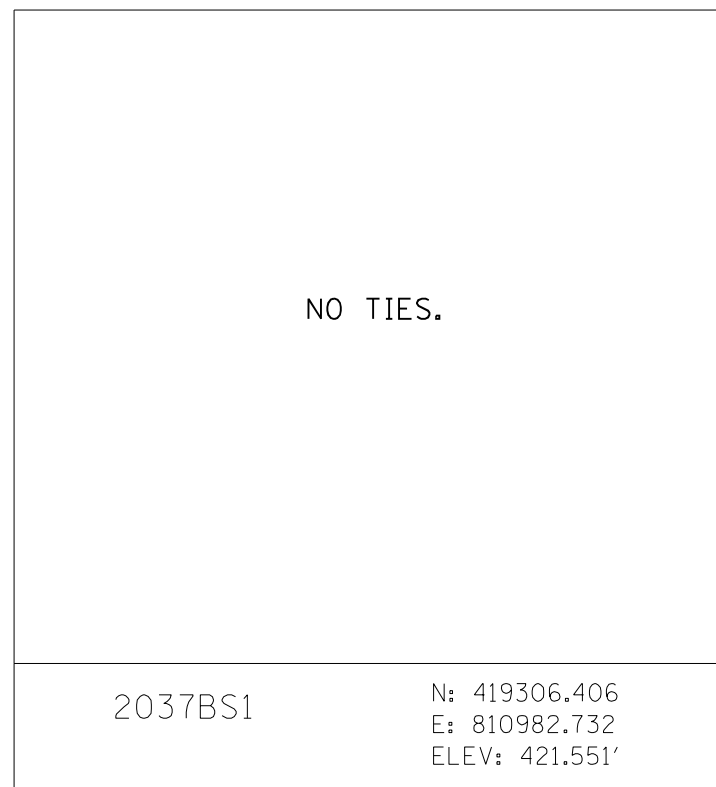
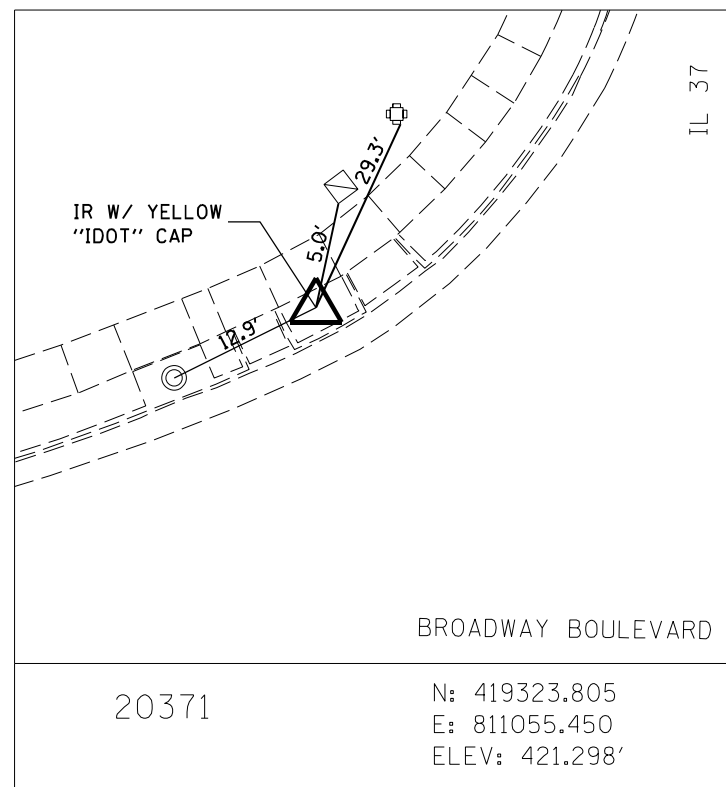
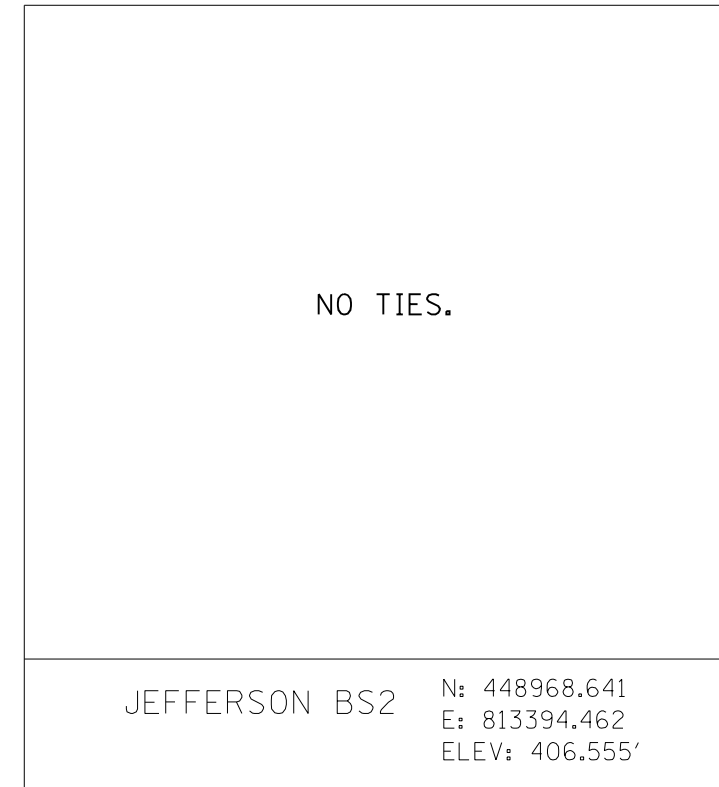
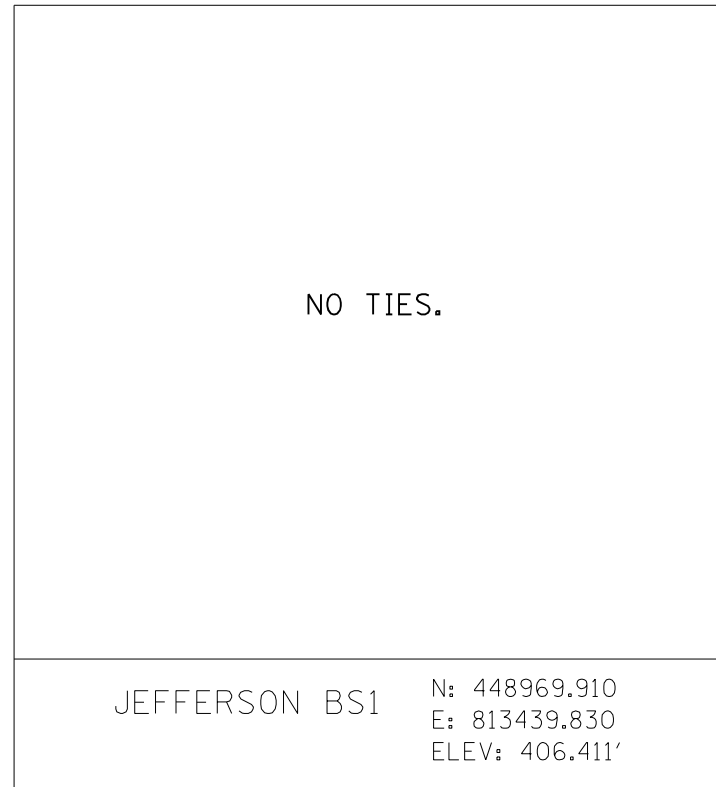
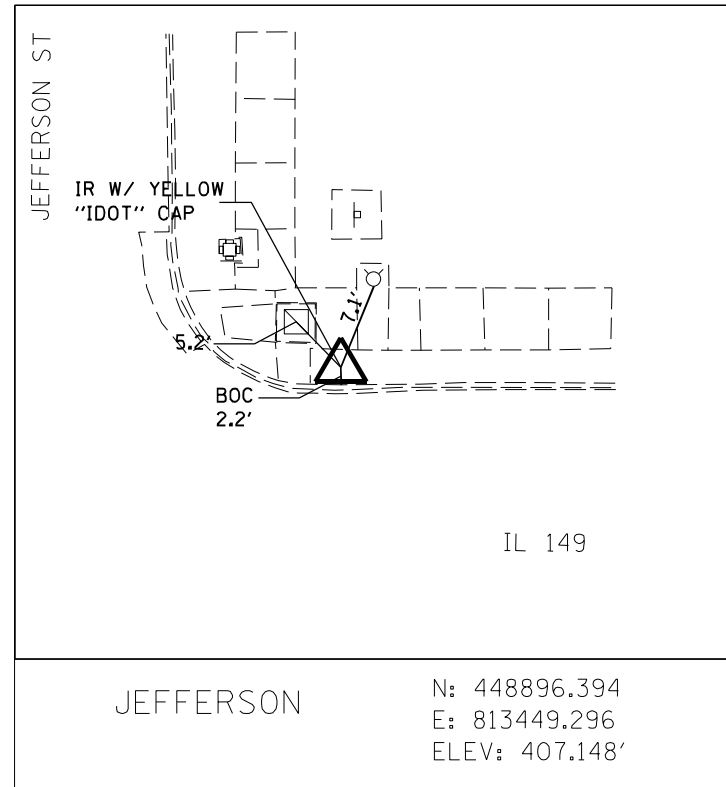
USER NAME = brandonja	DESIGNED -	REVISED -
PLOT SCALE = 200,0000' / in.	DRAWN -	REVISED -
PLOT DATE = 3/19/2021	CHECKED -	REVISED -
	DATE -	REVISED -

**STATE OF ILLINOIS
DEPARTMENT OF TRANSPORTATION**

**ALIGNMENTS LAYOUT AND
GEOPAK ELEMENT IDENTIFICATION**

SCALE: SHEET OF SHEETS STA. TO STA.

F.A. RTE.	SECTION	COUNTY	TOTAL SHEETS	SHEET NO.
-	D9 ADA Ramp 2021-1	VARIOUS	33	10
			CONTRACT NO. 78812	



MODEL: Default
 FILE NAME: p:\planningroom\dot\illinois\pwr\WIDOT\Documents\IDOT_Offices\District 9\Projects\78812\CADD\DATA\CAD\Drawings\0778812_ShtB-Typ_Sch_Ties_ControlElements.dgn

USER NAME = brandonja	DESIGNED -	REVISED -
	DRAWN -	REVISED -
PLOT SCALE = 100,0000' / in.	CHECKED -	REVISED -
PLOT DATE = 3/19/2021	DATE -	REVISED -

**STATE OF ILLINOIS
DEPARTMENT OF TRANSPORTATION**

**CONTROL POINTS:
HORIZONTAL AND VERTICAL TIES**

SCALE: SHEET OF SHEETS STA. TO STA.

F.A. RTE.	SECTION	COUNTY	TOTAL SHEETS	SHEET NO.
-	D9 ADA Ramp 2021-1	VARIOUS	33	11
			CONTRACT NO. 78812	



LOCATION 1 :
(IL 149 & JEFFERSON STREET)

WEST FRANKFORT



LOCATION 4 :
(IL 37 & 8TH STREET)



LOCATION 2 :
(IL 37 & 4TH STREET)

LOCATION 3 :
(OLD IL 37 & BROADWAY BLVD)

JOHNSTON CITY

MODEL: Default
 FILE NAME: p:\planning\room\dot\illinois\pww\DOT\Documents\IBOT_Office\District_9\Projects\78812_CAD\DATA\CAD\Drawings\978812_ShrB_Tp_Sch_Ties_Ceas\Elements.dwg

USER NAME = brandonja	DESIGNED -	REVISED -
	DRAWN -	REVISED -
PLOT SCALE = 200,0000' / in.	CHECKED -	REVISED -
PLOT DATE = 3/19/2021	DATE -	REVISED -

**STATE OF ILLINOIS
DEPARTMENT OF TRANSPORTATION**

**ADA RAMP UPGRADE LOCATION MAPS AT IL 149 IN
WEST FRANKFORT AND IL 37 IN JOHNSTON CITY**

SCALE: SHEET OF SHEETS STA. TO STA.

F.A. RTE.	SECTION	COUNTY	TOTAL SHEETS	SHEET NO.
-	D9 ADA Ramp 2021-1	VARIOUS	33	12
			CONTRACT NO. 78812	

10+00 JEFFERSON

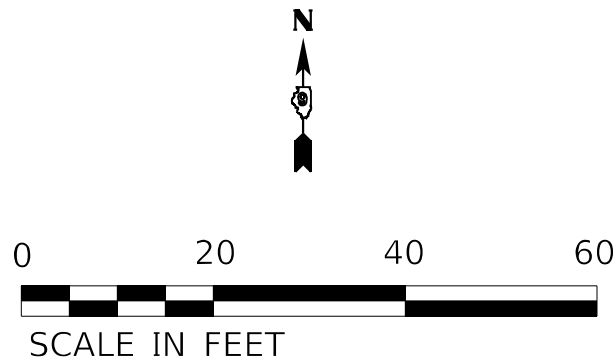
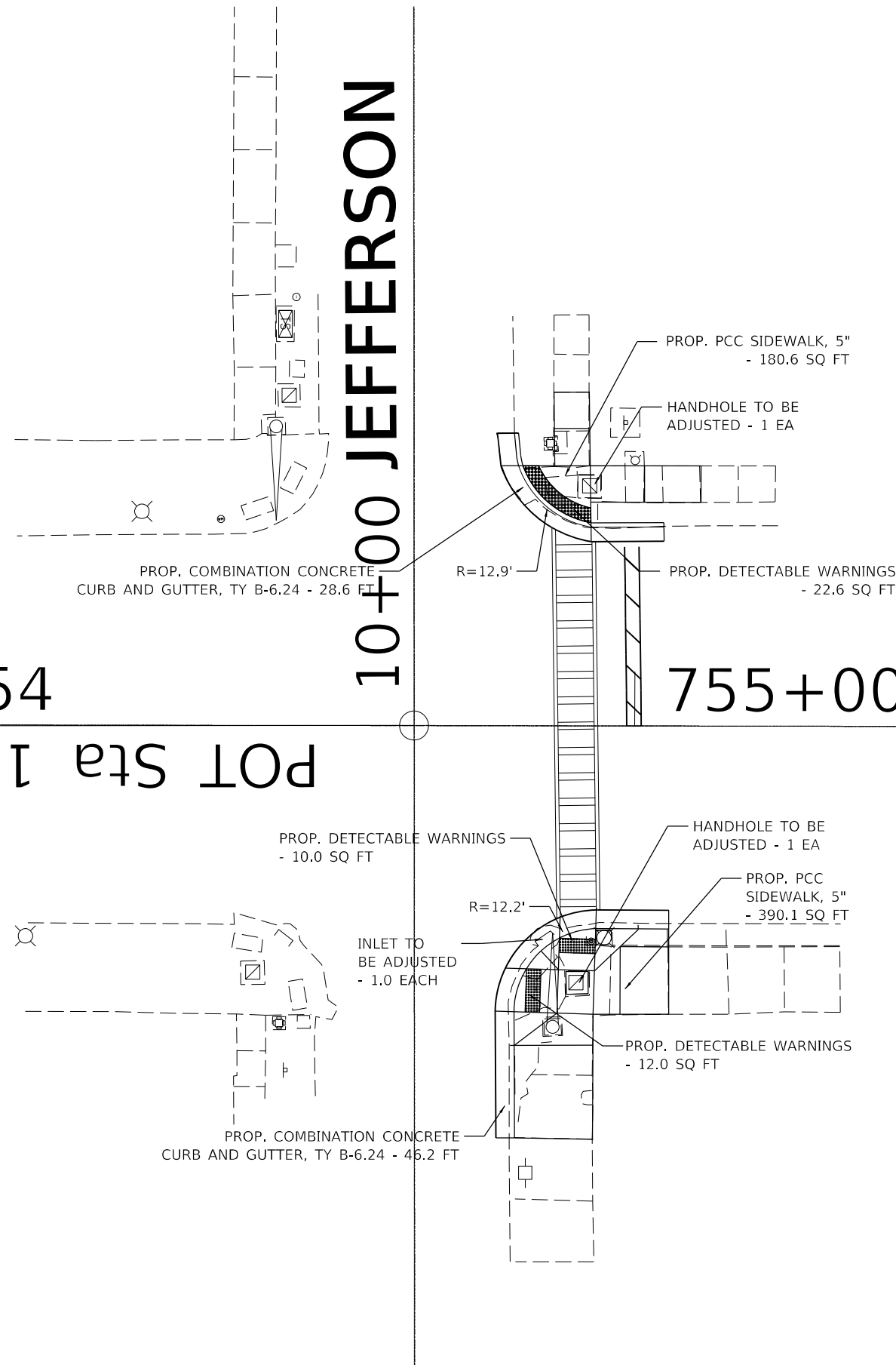
IL 149

754

755+00

756

POT Sta 10+00.00



MODEL: I:\state\... FILE NAME: ...

USER NAME = brandonja	DESIGNED -	REVISED -
	DRAWN -	REVISED -
PLOT SCALE = 20,0000 * / in.	CHECKED -	REVISED -
PLOT DATE = 3/19/2021	DATE -	REVISED -

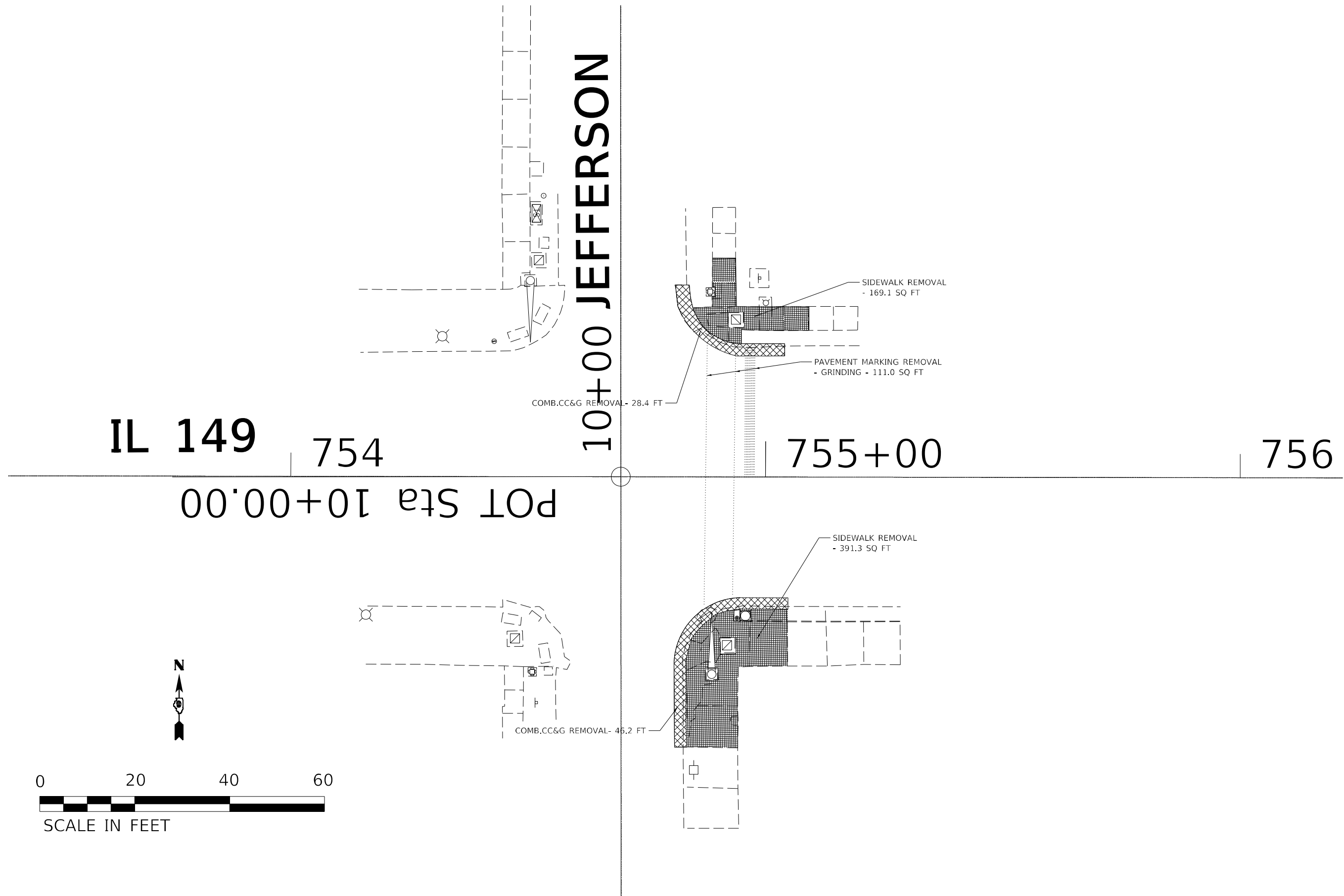
**STATE OF ILLINOIS
DEPARTMENT OF TRANSPORTATION**

**PLAN SHEET AT (LOC. 1)
IL 149 & JEFFERSON ST**

SCALE: SHEET OF SHEETS STA. TO STA.

F.A. RTE.	SECTION	COUNTY	TOTAL SHEETS	SHEET NO.
-	D9 ADA Ramp 2021-1	VARIOUS	33	13
			CONTRACT NO. 78812	

MODEL: I:\scale
 FILE NAME: p:\planroom\dot\illinois\pwr\WIDOT\Documents\DOT_Offices\District 9\Projects\78812\CADD\Drawings\DOT\78812_Site_C-Plan_Prof.dwg



USER NAME = brandonja	DESIGNED -	REVISED -
	DRAWN -	REVISED -
PLOT SCALE = 20,0000 * / in.	CHECKED -	REVISED -
PLOT DATE = 3/19/2021	DATE -	REVISED -

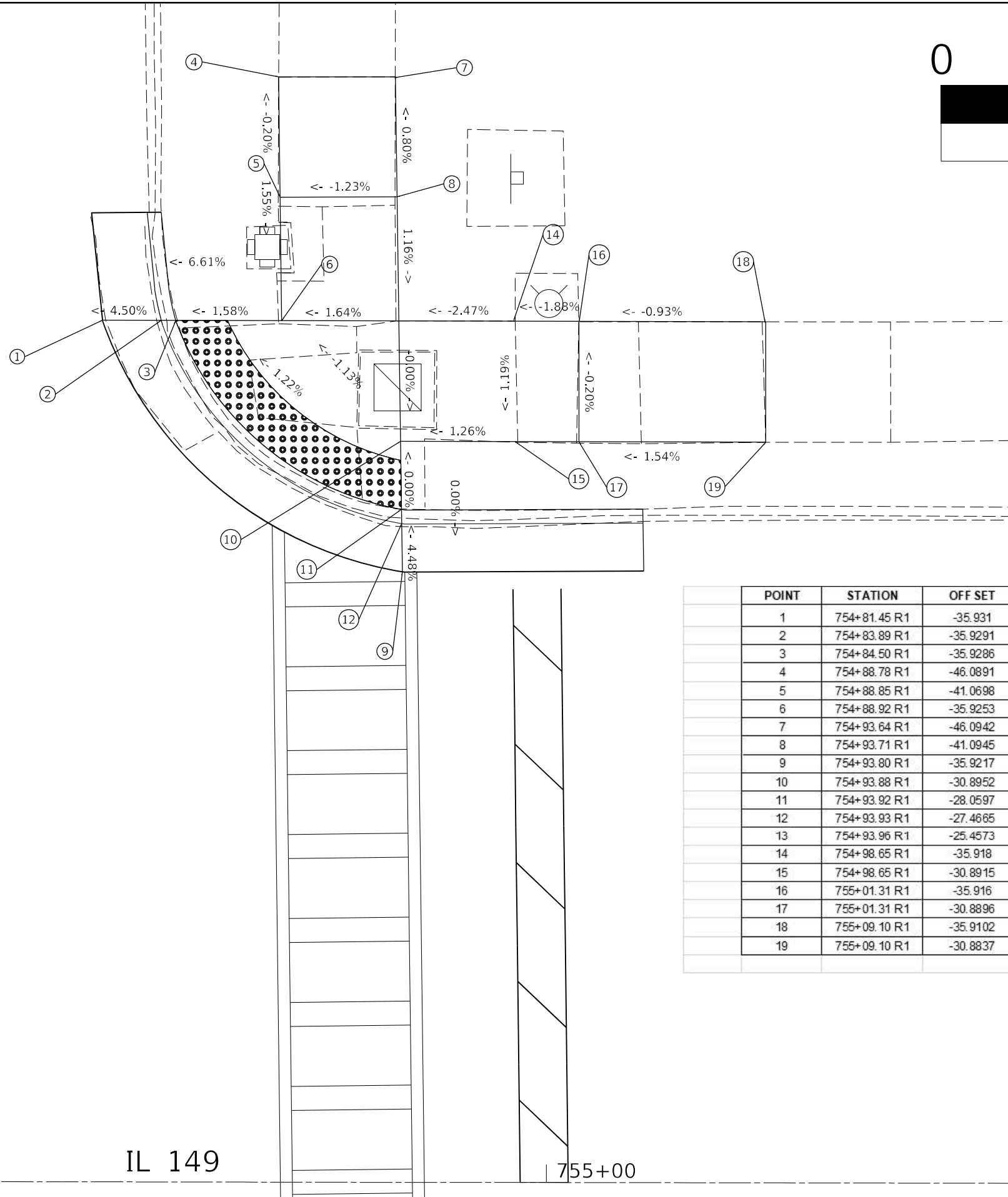
**STATE OF ILLINOIS
 DEPARTMENT OF TRANSPORTATION**

**REMOVAL SHEET AT (LOC. 1)
 IL 149 & JEFFERSON ST**

SCALE: SHEET OF SHEETS STA. TO STA.

F.A. RTE.	SECTION	COUNTY	TOTAL SHEETS	SHEET NO.
-	D9 ADA Ramp 2021-1	VARIOUS	33	14
			CONTRACT NO. 78812	

JEFFERSON ST



POINT	STATION	OFF SET	NORTHING	EASTING	ELEVATION
1	754+81.45 R1	-35.931	448902.8954	813433.3639	406.65
2	754+83.89 R1	-35.9291	448902.8898	813435.8069	406.76
3	754+84.50 R1	-35.9286	448902.8884	813436.4116	406.8
4	754+88.78 R1	-46.0891	448913.0423	813440.7108	406.94
5	754+88.85 R1	-41.0698	448908.0229	813440.7723	406.95
6	754+88.92 R1	-35.9253	448902.8783	813440.8353	406.87
7	754+93.64 R1	-46.0942	448913.0399	813445.5675	406.97
8	754+93.71 R1	-41.0945	448908.0401	813445.6388	407.01
9	754+93.80 R1	-35.9217	448902.8672	813445.7126	406.95
10	754+93.88 R1	-30.8952	448897.8406	813445.7842	406.95
11	754+93.92 R1	-28.0597	448895.005	813445.8246	406.95
12	754+93.93 R1	-27.4665	448894.4118	813445.8331	406.95
13	754+93.96 R1	-25.4573	448892.4026	813445.8618	407.04
14	754+98.65 R1	-35.918	448902.8561	813450.5662	407.07
15	754+98.65 R1	-30.8915	448897.8296	813450.5637	407.01
16	755+01.31 R1	-35.916	448902.85	813453.2221	407.12
17	755+01.31 R1	-30.8896	448897.8236	813453.2221	407.13
18	755+09.10 R1	-35.9102	448902.8322	813461.013	407.19
19	755+09.10 R1	-30.8837	448897.8057	813461.013	407.25

MODEL: 2.5 .sxd
 FILE NAME: p:\projects\78812\CAD\Drawings\DOT_Office\Drawings\78812\CAD\Drawings\78812_Sidewalk_Ramp_Plan.dwg

10+00

IL 149

755+00

USER NAME = brandonja	DESIGNED -	REVISED -
	DRAWN -	REVISED -
PLOT SCALE = 5,000' / in.	CHECKED -	REVISED -
PLOT DATE = 3/19/2021	DATE -	REVISED -

STATE OF ILLINOIS
DEPARTMENT OF TRANSPORTATION

SIDEWALK RAMP DETAIL AT LOC. 1
IL 149 & JEFFERSON ST: NE QUAD

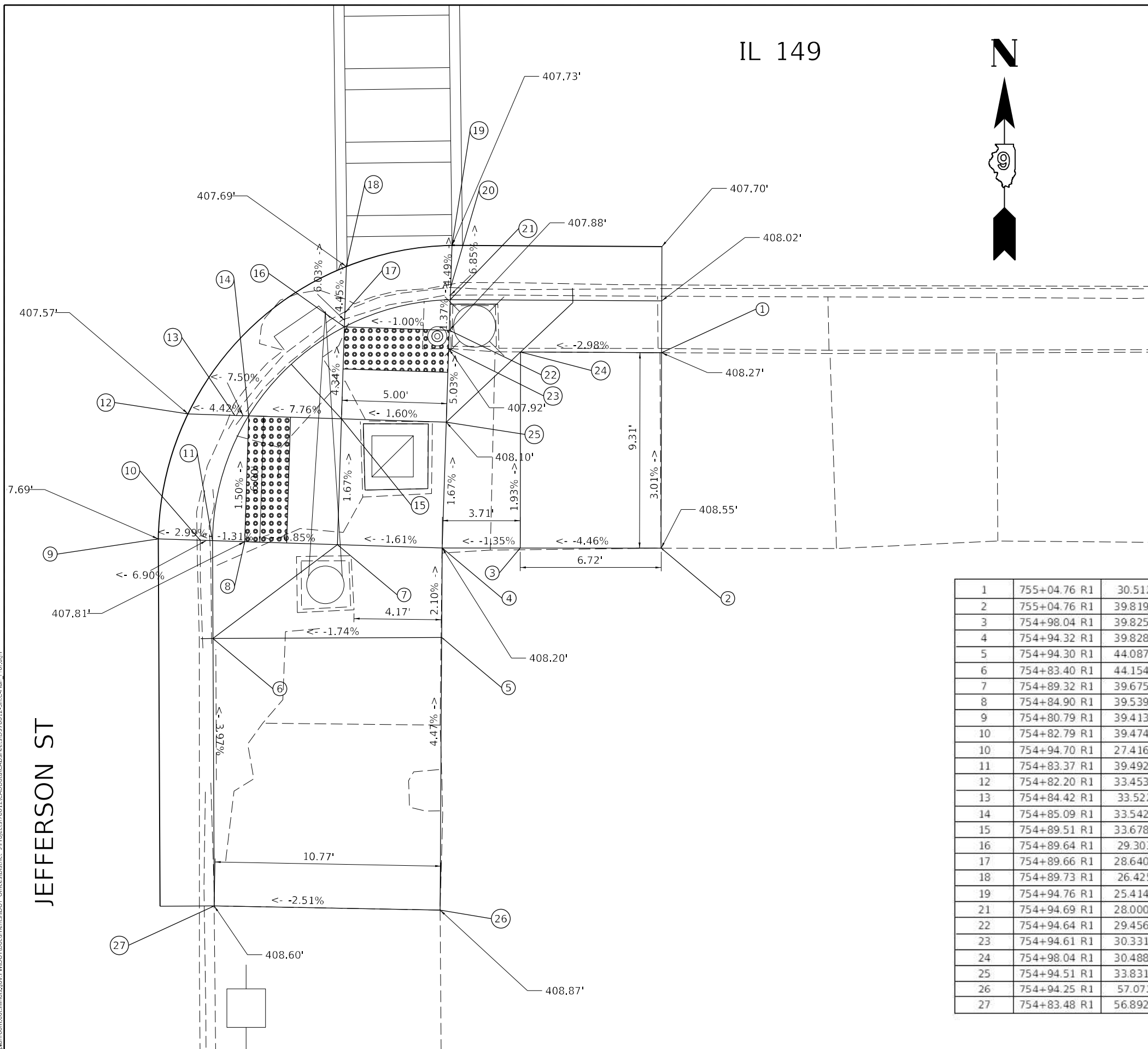
SCALE: SHEET OF SHEETS STA. TO STA.

F.A. RTE.	SECTION	COUNTY	TOTAL SHEETS	SHEET NO.
-	D9 ADA Ramp 2021-1	VARIOUS	33	15
			CONTRACT NO. 78812	
		ILLINOIS	FED. AID PROJECT	

FAS 2887 / FAP 873

Williamson/Franklin

IL 149



1	755+04.76 R1	30.512	448836.4168	813456.5757	408.27
2	755+04.76 R1	39.8192	448827.1096	813456.5564	408.55
3	754+98.04 R1	39.8253	448827.1138	813449.8355	408.25
4	754+94.32 R1	39.8287	448827.1161	813446.1224	408.2
5	754+94.30 R1	44.0877	448822.8571	813446.0975	408.29
6	754+83.40 R1	44.1545	448822.807	813435.1953	408.1
7	754+89.32 R1	39.6752	448827.2772	813441.125	408.12
8	754+84.90 R1	39.5395	448827.4197	813436.7053	407.81
9	754+80.79 R1	39.4132	448827.5523	813432.5915	407.69
10	754+82.79 R1	39.4748	448827.4877	813434.5944	407.75
10	754+94.70 R1	27.4164	448839.5278	813446.5226	407.82
11	754+83.37 R1	39.4925	448827.4691	813435.1739	407.79
12	754+82.20 R1	33.4536	448833.5098	813434.0079	407.57
13	754+84.42 R1	33.522	448833.438	813436.2322	407.67
14	754+85.09 R1	33.5423	448833.4166	813436.8987	407.72
15	754+89.51 R1	33.6781	448833.2741	813441.3183	408.02
16	754+89.64 R1	29.303	448837.6489	813441.4594	407.83
17	754+89.66 R1	28.6401	448838.3118	813441.4808	407.79
18	754+89.73 R1	26.425	448840.5268	813441.5522	407.69
19	754+94.76 R1	25.4147	448841.5294	813446.5871	407.73
21	754+94.69 R1	28.0003	448838.9439	813446.5037	407.86
22	754+94.64 R1	29.4565	448837.4878	813446.4568	407.88
23	754+94.61 R1	30.3318	448836.6125	813446.4286	407.92
24	754+98.04 R1	30.4886	448836.4505	813449.8549	408.07
25	754+94.51 R1	33.8316	448833.1129	813446.3157	408.1
26	754+94.25 R1	57.072	448809.8729	813446.0216	408.87
27	754+83.48 R1	56.8921	448810.0693	813435.2537	408.6

JEFFERSON ST

MODEL: 2.5 scale
FILE NAME: p:\hamilton.dwg
PROJECT: 78812.CADDATA\CAD\Projects\0778812_SitePlan_Proj.dwg

USER NAME = brandonja	DESIGNED -	REVISED -
DRAWN -	REVISOR -	
PLOT SCALE = 5,0000' / in.	CHECKED -	REVISED -
PLOT DATE = 3/19/2021	DATE -	REVISED -

STATE OF ILLINOIS
DEPARTMENT OF TRANSPORTATION

SIDEWALK RAMP DETAIL AT LOC. 1
IL 149 & JEFFERSON ST: SE QUAD

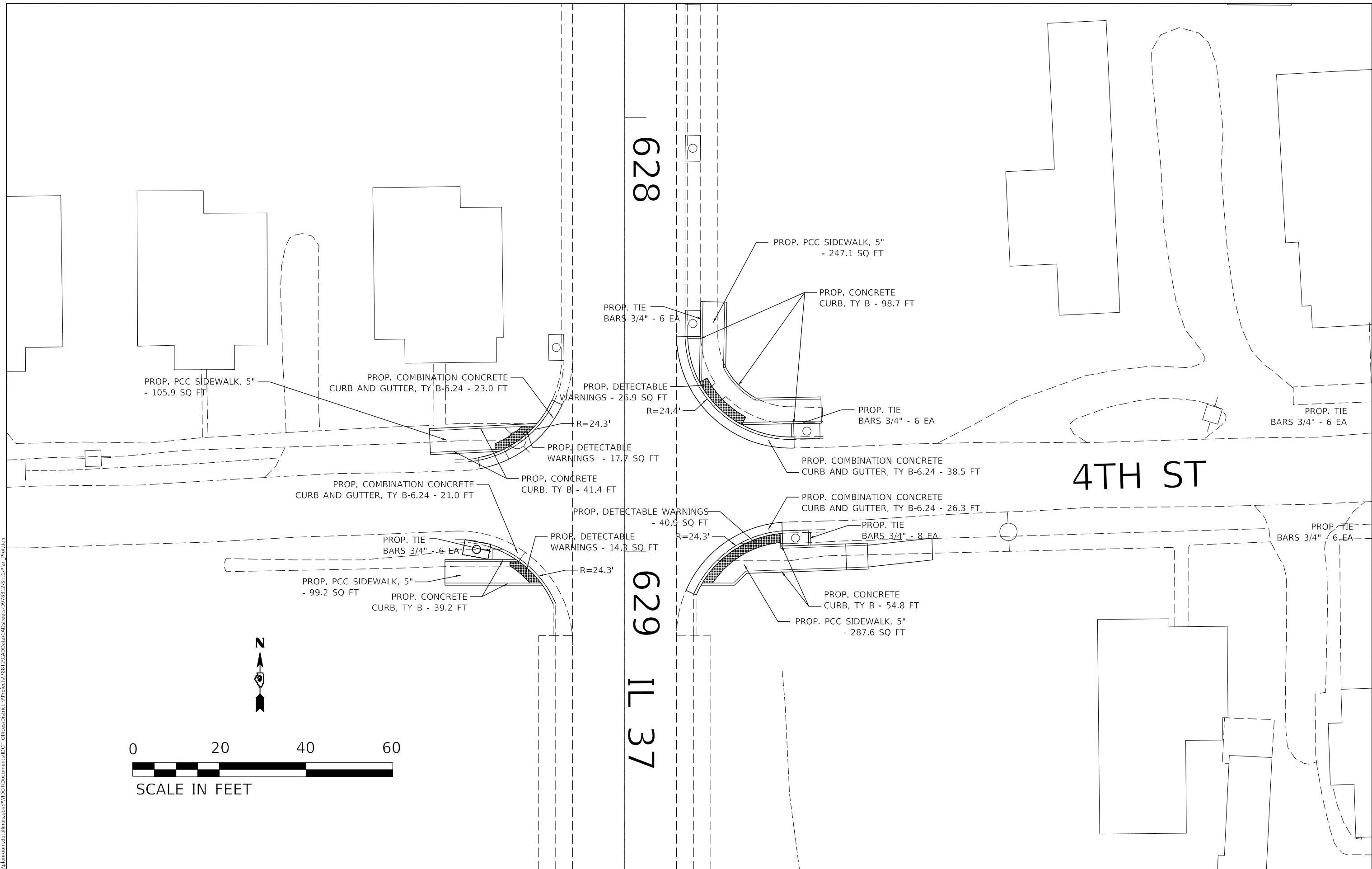
SCALE: SHEET OF SHEETS STA. TO STA.

F.A. RTE.	SECTION	COUNTY	TOTAL SHEETS	SHEET NO.
-	D9 ADA Ramp 2021-1	VARIOUS	33	16
			CONTRACT NO. 78812	

FAS 2887 / FAP 873

Williamson/Franklin

MODEL: I:\scale FILE NAME: 20210319\11000000.dwg PROJECT: 78812\CAD\DATA\CAD\PROJECTS\0778812\SitePlan_Plan.dwg



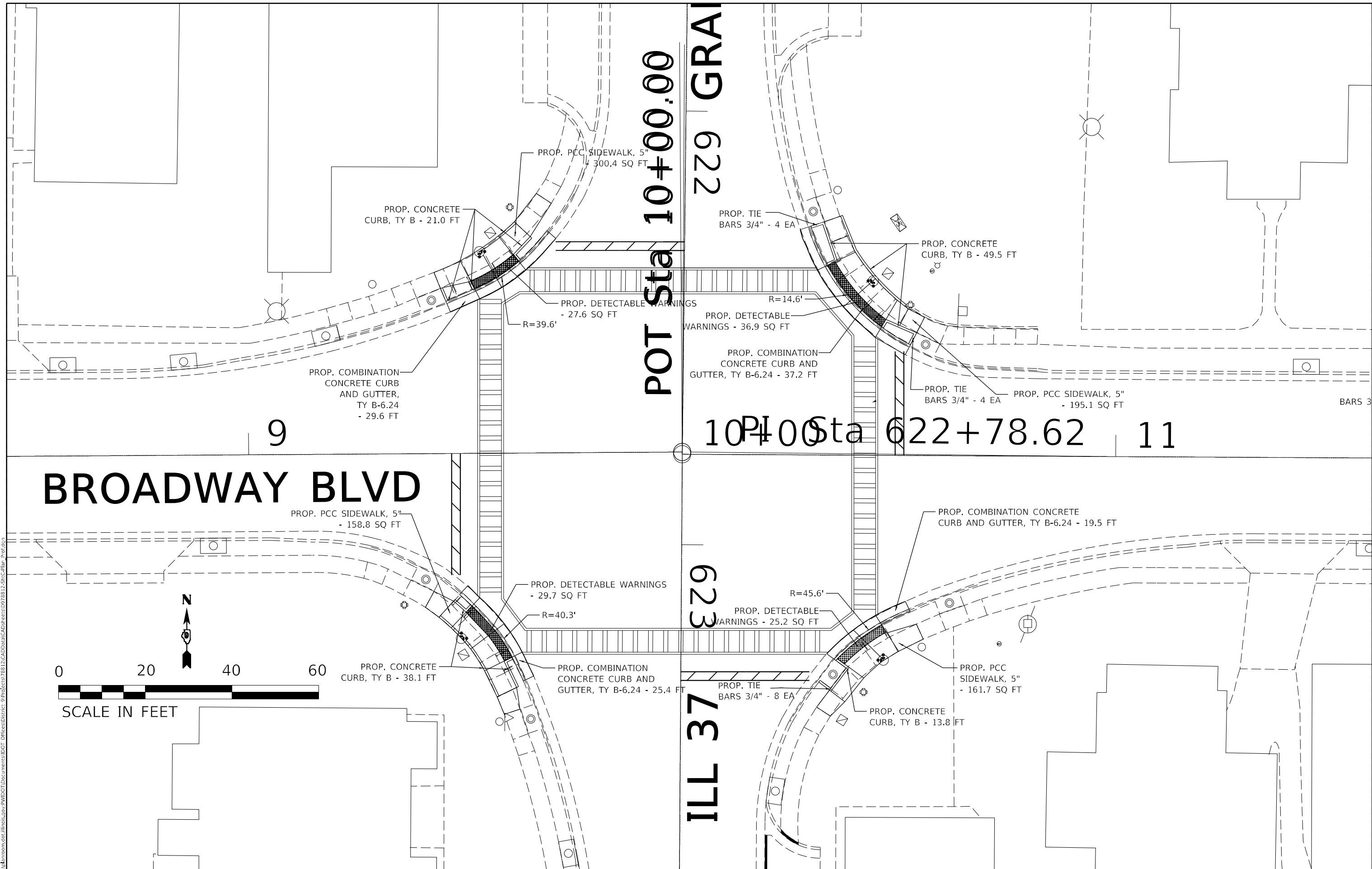
USER NAME = brandonja	DESIGNED -	REVISED -
	DRAWN -	REVISED -
PLOT SCALE = 20,0000 * / in.	CHECKED -	REVISED -
PLOT DATE = 3/19/2021	DATE -	REVISED -

**STATE OF ILLINOIS
DEPARTMENT OF TRANSPORTATION**

**PLAN SHEET AT (LOC. 2)
IL 37 & 4TH ST**

SCALE: SHEET OF SHEETS STA. TO STA.

F.A. RTE.	SECTION	COUNTY	TOTAL SHEETS	SHEET NO.
-	D9 ADA Ramp 2021-1	VARIOUS	33	17
			CONTRACT NO. 78812	



MODEL: I:\scale
 FILE NAME: p:\pub\harronm.dwg
 PROJECT: 78812_CADD\Drawings\DOT_Offices\Drawings\9778812_SitePlan_Prot.dwg

USER NAME = brandonja	DESIGNED -	REVISED -
	DRAWN -	REVISED -
PLOT SCALE = 20,0000 * / in.	CHECKED -	REVISED -
PLOT DATE = 3/19/2021	DATE -	REVISED -

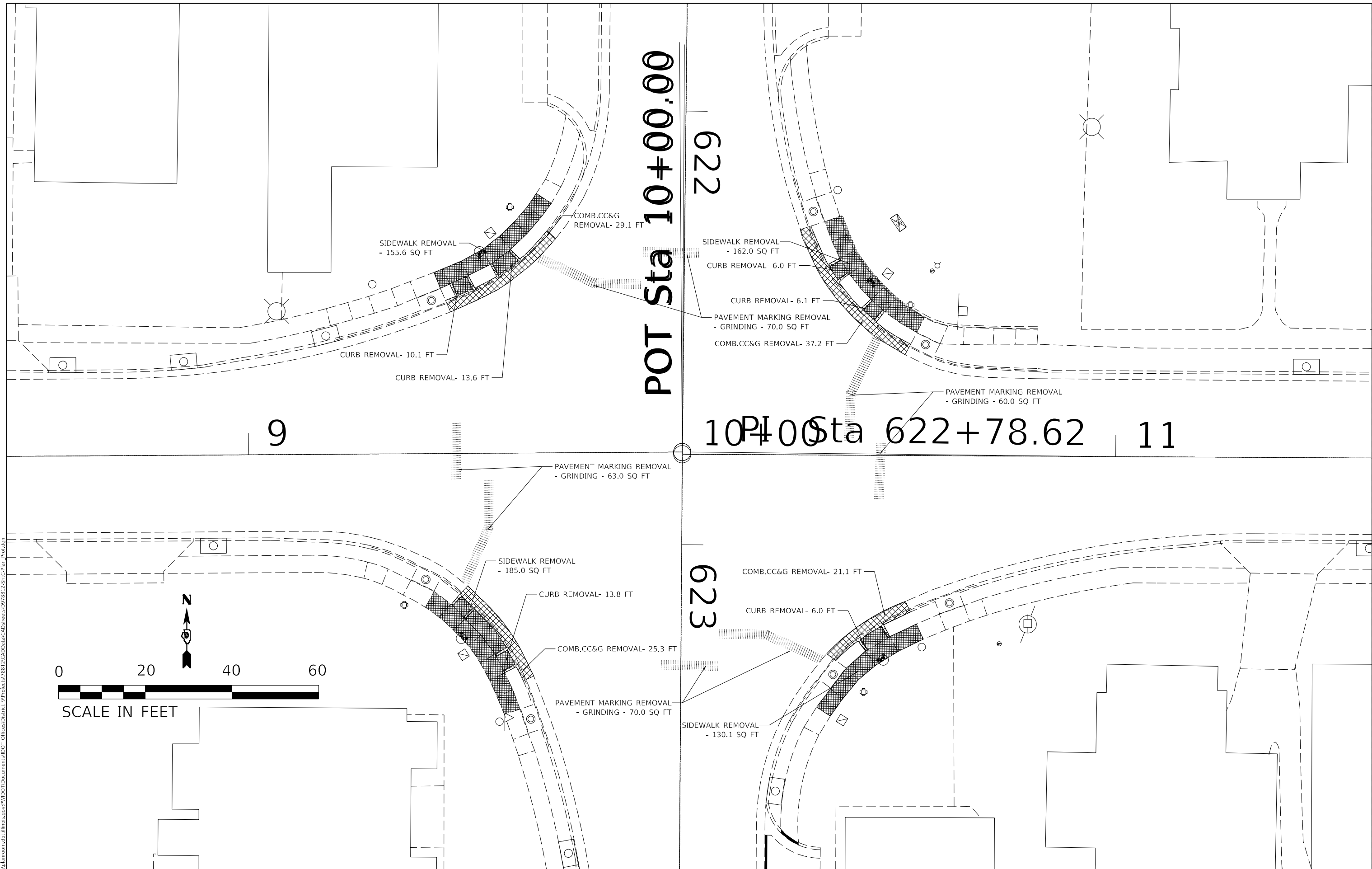
STATE OF ILLINOIS
DEPARTMENT OF TRANSPORTATION

PLAN SHEET AT (LOC. 3)
IL 37 & BROADWAY ST

SCALE: SHEET OF SHEETS STA. TO STA.

F.A. RTE.	SECTION	COUNTY	TOTAL SHEETS	SHEET NO.
-	D9 ADA Ramp 2021-1	VARIOUS	33	19
			CONTRACT NO. 78812	
ILLINOIS FED. AID PROJECT				

P. TIE
4 EA



MODEL: I:\scale
 FILE NAME: p:\pub\harronm.dwg
 PROJECT: 78812_CADD\DATA\CAD\PROJECTS\0778812_SitePlan_Plot.dwg

USER NAME = brandonja	DESIGNED -	REVISED -
	DRAWN -	REVISED -
PLOT SCALE = 20,0000 * / in.	CHECKED -	REVISED -
PLOT DATE = 3/19/2021	DATE -	REVISED -

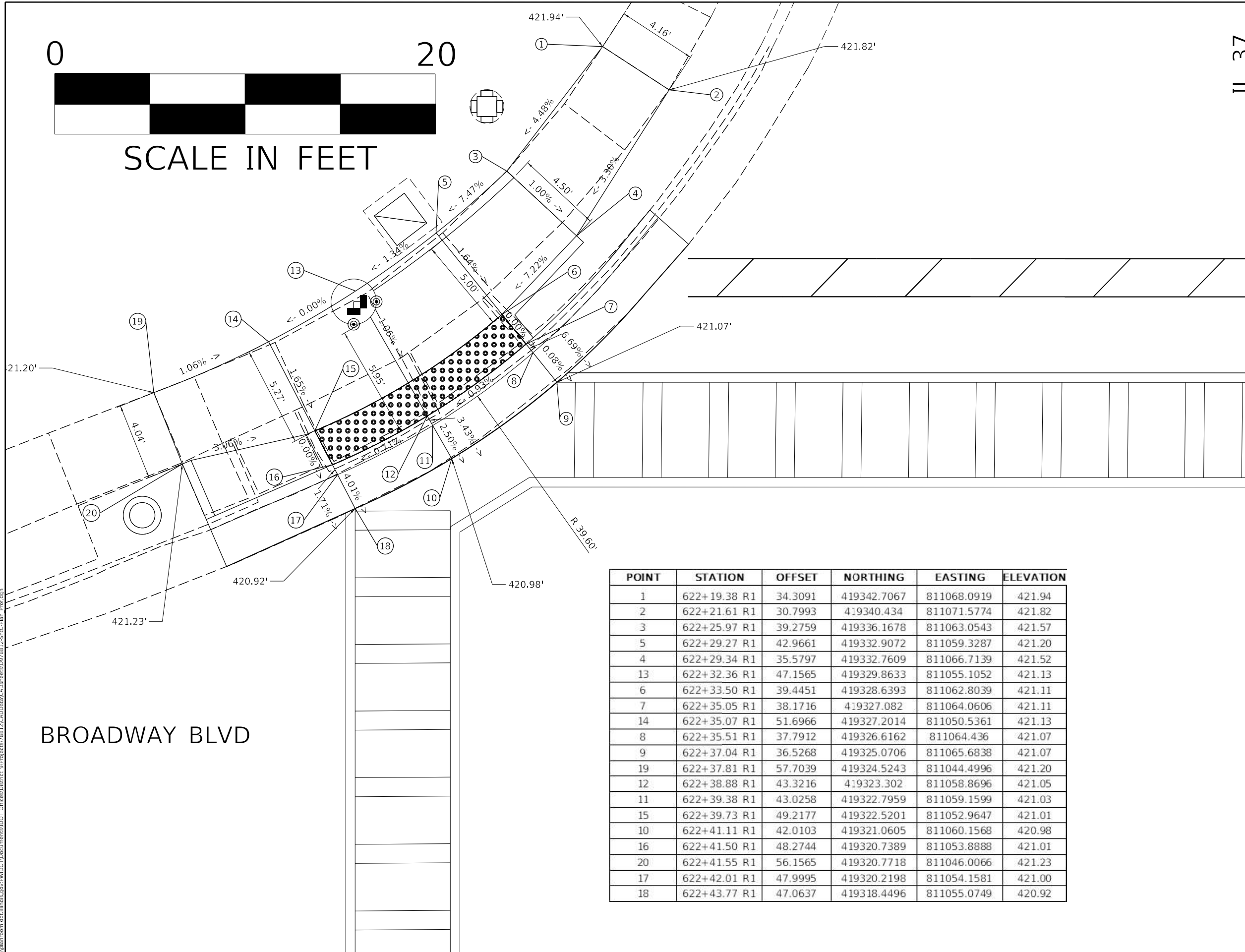
STATE OF ILLINOIS
DEPARTMENT OF TRANSPORTATION

REMOVAL SHEET AT (LOC. 3)				
IL 37 & BROADWAY ST				
SCALE:	SHEET	OF	SHEETS	STA. TO STA.

F.A. RTE.	SECTION	COUNTY	TOTAL SHEETS	SHEET NO.
-	D9 ADA Ramp 2021-1	VARIOUS	33	20
CONTRACT NO. 78812				
ILLINOIS FED. AID PROJECT				



IL 37



MODEL: 2.5 .sxd
FILE NAME: p:\pub\harron.dwg
PROJECT: 78812.CAD\DATA\CAD\PROJECTS\0778812_SitePlan_2021.dwg

BROADWAY BLVD

USER NAME = brandonja	DESIGNED -	REVISED -
PLOT SCALE = 5,000' / in.	DRAWN -	REVISED -
PLOT DATE = 3/19/2021	CHECKED -	REVISED -
	DATE -	REVISED -

STATE OF ILLINOIS
DEPARTMENT OF TRANSPORTATION

SIDEWALK_RAMP_DETAIL_AT_LOC_3
IL 37 & BROADWAY BLVD: NW QUAD

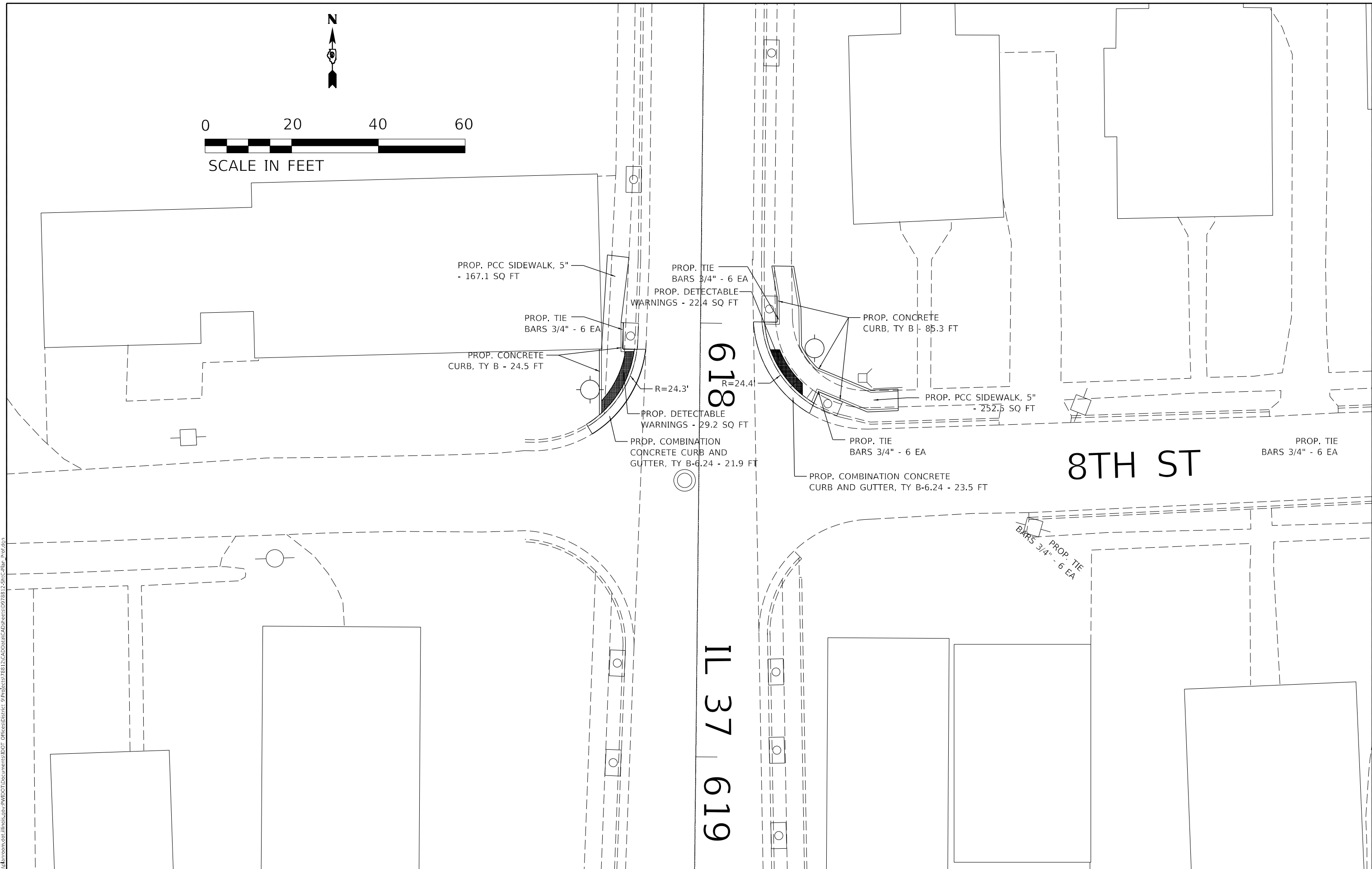
SCALE: SHEET OF SHEETS STA. TO STA.

F.A. RTE.	SECTION	COUNTY	TOTAL SHEETS	SHEET NO.
-	D9 ADA Ramp 2021-1	VARIOUS	33	21
ILLINOIS FED. AID PROJECT			CONTRACT NO. 78812	



0 20 40 60

SCALE IN FEET



MODEL: I:\scales
FILE NAME: p:\planningroom\dot\illinois\gov\p\w\dot\Documents\DOT_Offices\District 9\Projects\78812\CADData\CAD\Drawings\0778812_Site_Plan_Prof.dwg

USER NAME = brandonja	DESIGNED -	REVISED -
PLOT SCALE = 20,0000 * / in.	DRAWN -	REVISED -
PLOT DATE = 3/19/2021	CHECKED -	REVISED -
	DATE -	REVISED -

**STATE OF ILLINOIS
DEPARTMENT OF TRANSPORTATION**

**PLAN SHEET AT (LOC. 4)
IL 37 & 8TH ST**

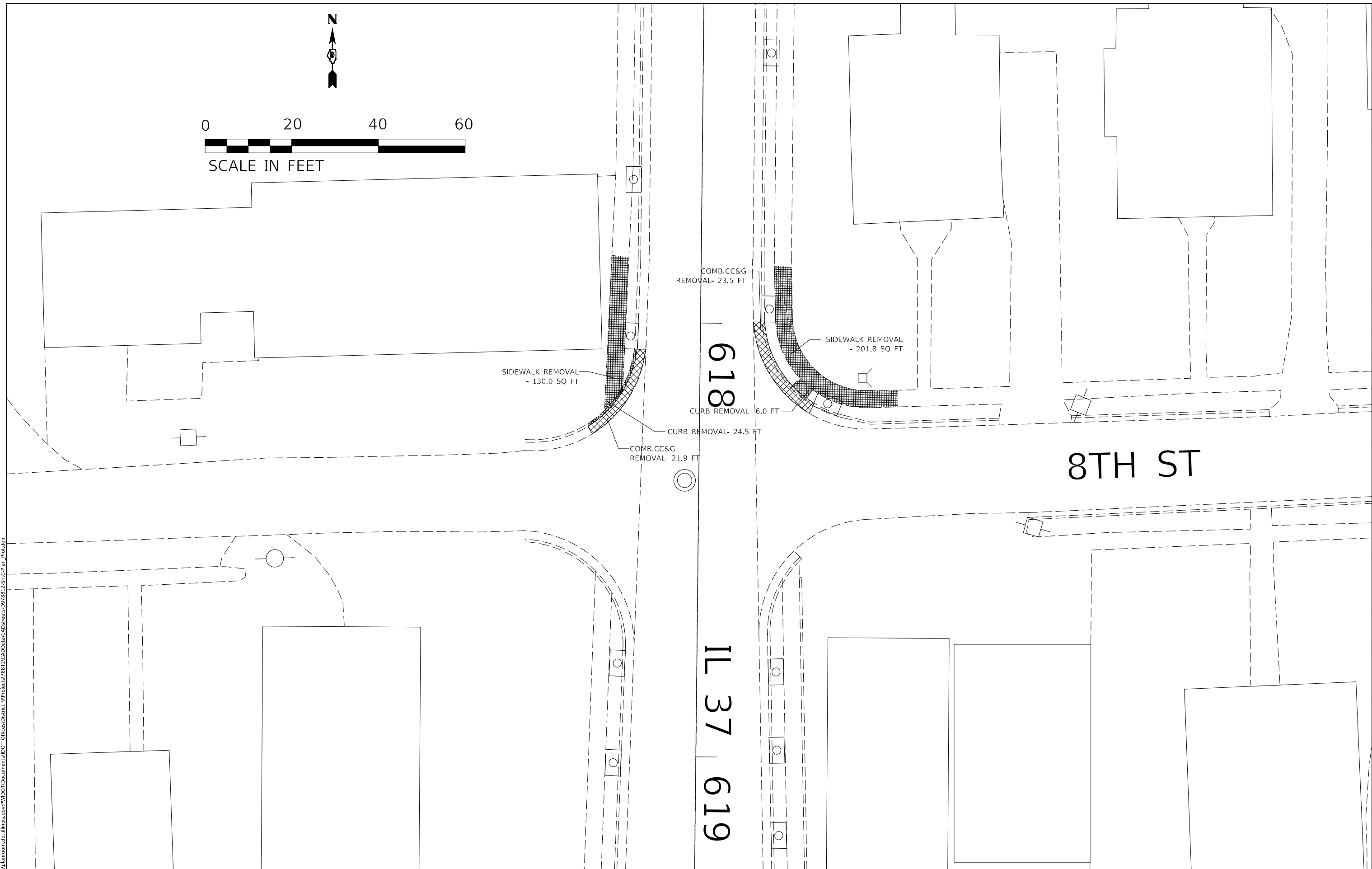
SCALE: SHEET OF SHEETS STA. TO STA.

F.A. RTE.	SECTION	COUNTY	TOTAL SHEETS	SHEET NO.
-	D9 ADA Ramp 2021-1	VARIOUS	33	25
			CONTRACT NO. 78812	
ILLINOIS		FED. AID PROJECT		



0 20 40 60

SCALE IN FEET



MODEL: I:\scales
FILE NAME: p:\pub\room.dwg
PROJECT: 78812\CADData\CAD\projects\0778812_Site_Plan_Prof.dwg

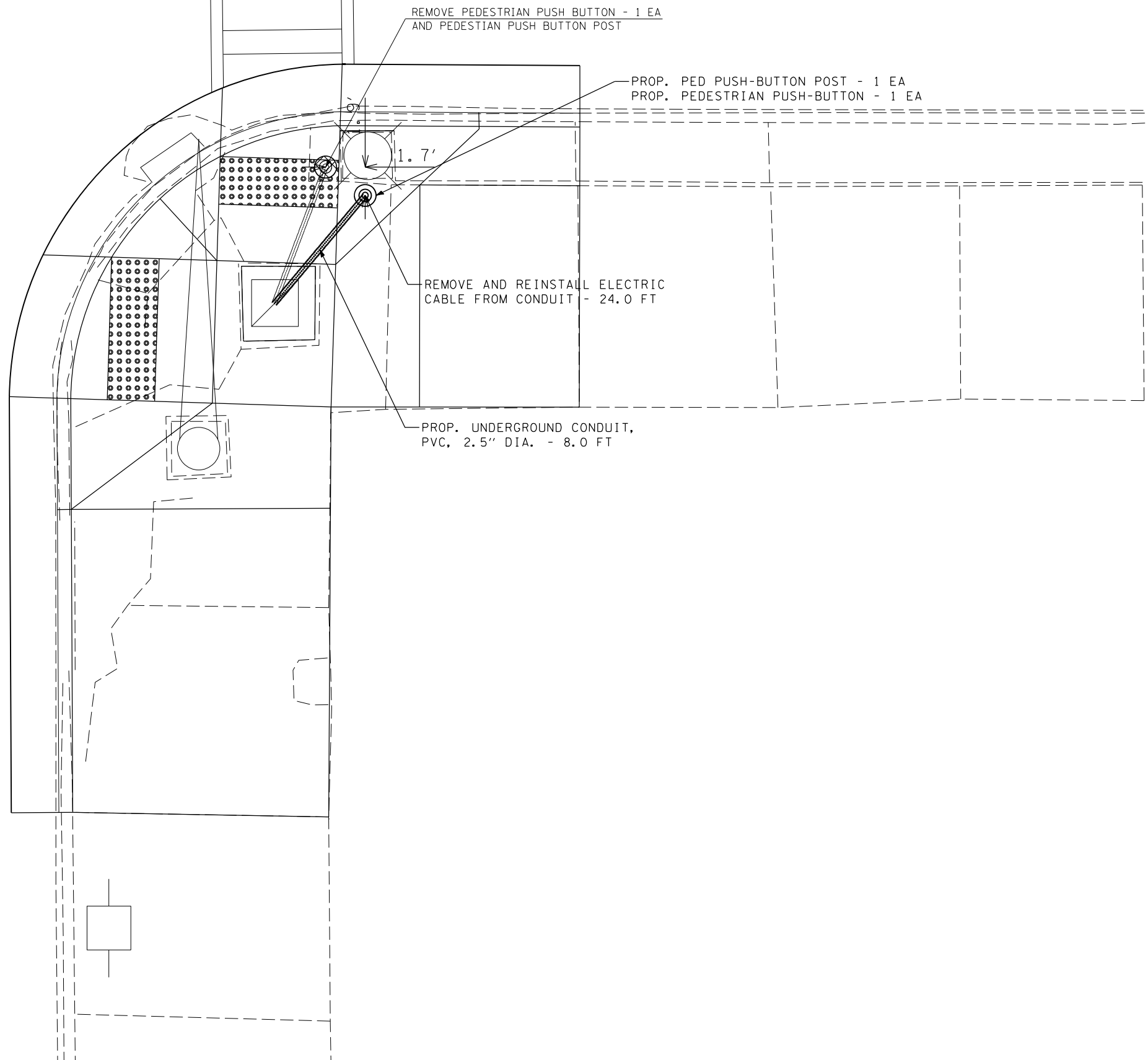
USER NAME = brandonja	DESIGNED -	REVISED -
PLOT SCALE = 20,0000 * / in.	DRAWN -	REVISED -
PLOT DATE = 3/19/2021	CHECKED -	REVISED -
	DATE -	REVISED -

**STATE OF ILLINOIS
DEPARTMENT OF TRANSPORTATION**

**REMOVAL SHEET AT (LOC. 4)
IL 37 & 8TH ST**

SCALE: SHEET OF SHEETS STA. TO STA.

F.A. RTE.	SECTION	COUNTY	TOTAL SHEETS	SHEET NO.
-	D9 ADA Ramp 2021-1	VARIOUS	33	26
			CONTRACT NO. 78812	



MODEL: Default
 FILE NAME: p:\pub\harronm.dwg
 PROJECT: 78812_CADDData\CAD\Projects\0778812_Site-Detail.dwg

USER NAME = brandonja	DESIGNED -	REVISED -
	DRAWN -	REVISED -
PLOT SCALE = 5,0000' / in.	CHECKED -	REVISED -
PLOT DATE = 3/19/2021	DATE -	REVISED -

STATE OF ILLINOIS
DEPARTMENT OF TRANSPORTATION

PEDESTRIAN PUSH BUTTON POST RELOCATE DETAIL LOCATION # 1 - IL 149 AND JEFFERSON ST.				
SCALE:	SHEET	OF	SHEETS	STA. TO STA.

F.A. RTE.	SECTION	COUNTY	TOTAL SHEETS	SHEET NO.
-	D9 ADA Ramp 2021-1	VARIOUS	33	27
			CONTRACT NO. 78812	

NOTES:

1) ALL PROP. CABLE SHALL BE A.W.G. NO. 14 UNLESS OTHERWISE NOTED IN THE PLANS.



NOT TO SCALE

LEGEND

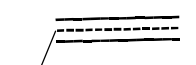
● PROP. TRAFFIC SIGNAL POST, 10 FT.

⊙ PROP. PEDESTRIAN PUSH BUTTONS

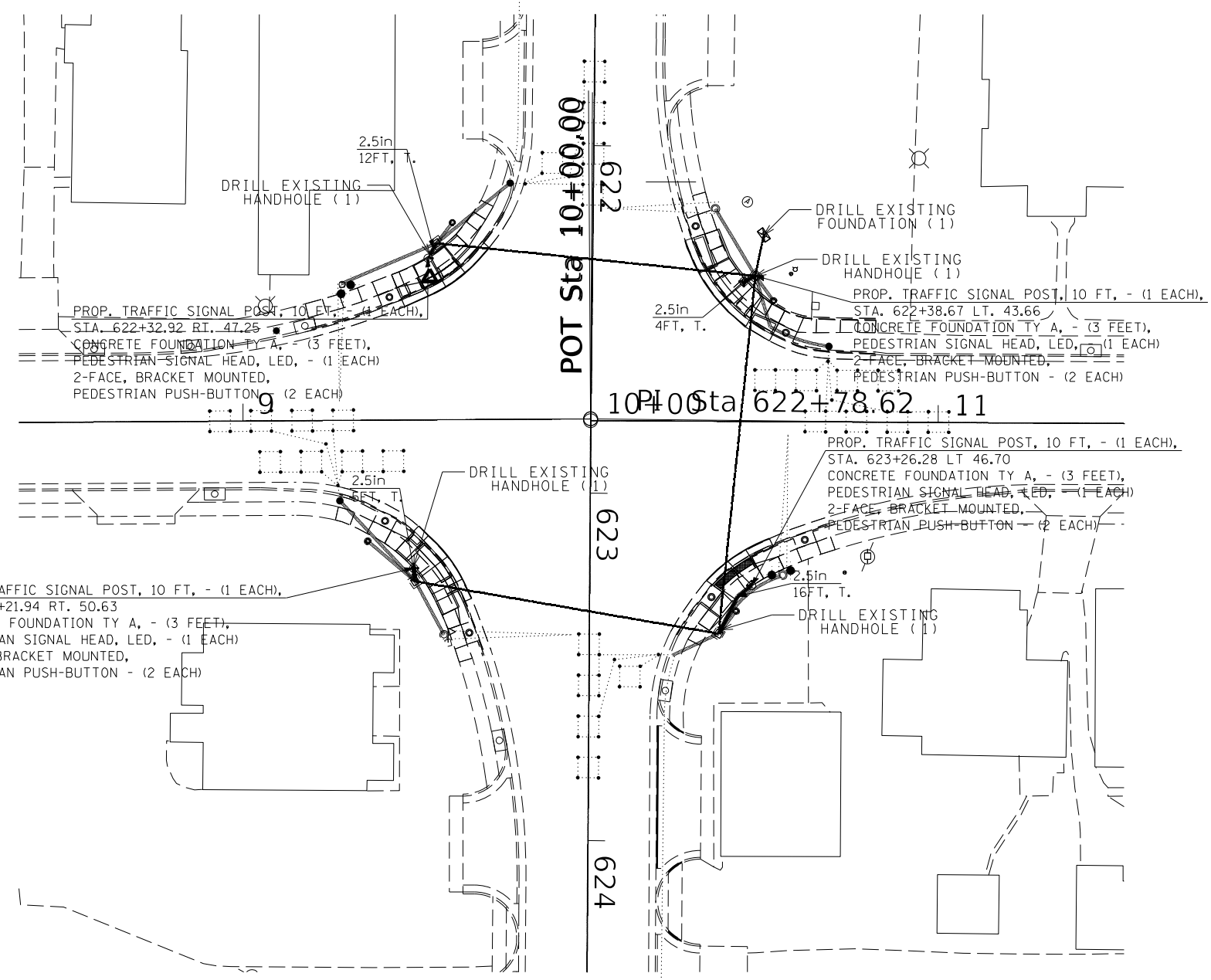
 PROP. PEDESTRIAN SIGNAL HEAD


● PROP. TRAFFIC SIGNAL POST, 10 FT.

 TRAFFIC SIGNAL CONTROLLER CABINET

 INDICATES P.V.C. CONDUIT SIZE; NUMBER BELOW LINE INDICATES TRENCH DISTANCE IN FEET
 2.5in
 16.5FT, T.

TRAFFIC SIGNAL: POST LOCATIONS	NORTHING	EASTING
	419329.3057	811055.0081
	419322.5794	811145.8506
	419240.1272	811050.8345
	419235.1118	811148.1268



MODEL: Default
 FILE NAME: p:\pub\m3000m.dwg
 PROJECT: 78812_CADD\DATA\CADD\PROJECTS\0778812_Shp-D-Details.dwg

USER NAME = brandonja	DESIGNED -	REVISED -
	DRAWN -	REVISED -
PLOT SCALE = 13,0000 * / in.	CHECKED -	REVISED -
PLOT DATE = 3/19/2021	DATE -	REVISED -

STATE OF ILLINOIS
DEPARTMENT OF TRANSPORTATION

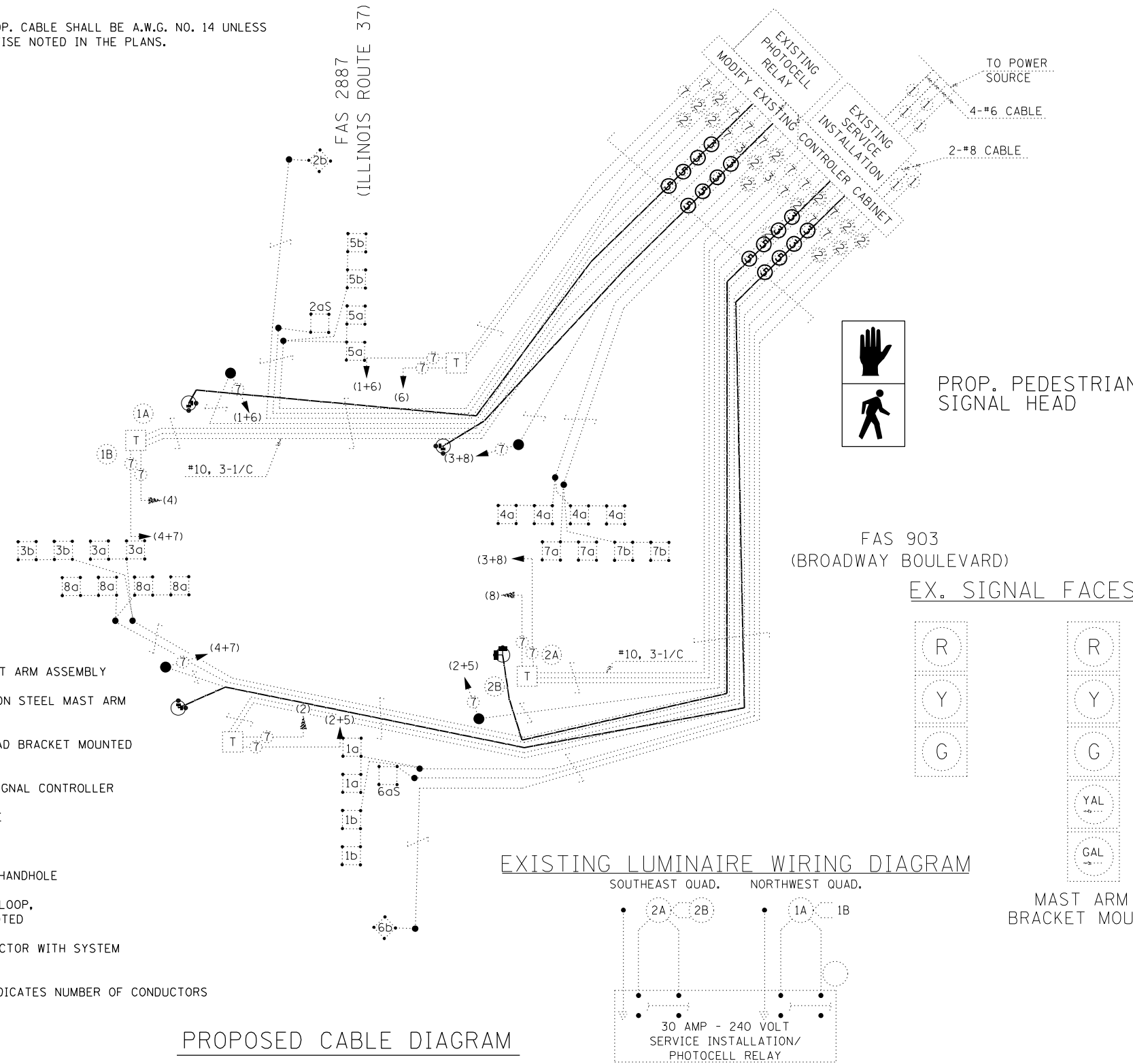
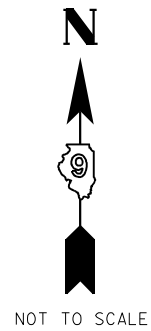
PEDESTRIAN SIGNAL HEAD AND PUSH BUTTON DETAILS
LOCATION # 3 - IL 37 & BROADWAY BOULEVARD

SCALE: SHEET OF SHEETS STA. TO STA.

F.A. RTE.	SECTION	COUNTY	TOTAL SHEETS	SHEET NO.
-	D9 ADA Ramp 2021-1	VARIOUS	33	28
			CONTRACT NO. 78812	

NOTES:

- 1) ALL PROP. CABLE SHALL BE A.W.G. NO. 14 UNLESS OTHERWISE NOTED IN THE PLANS.



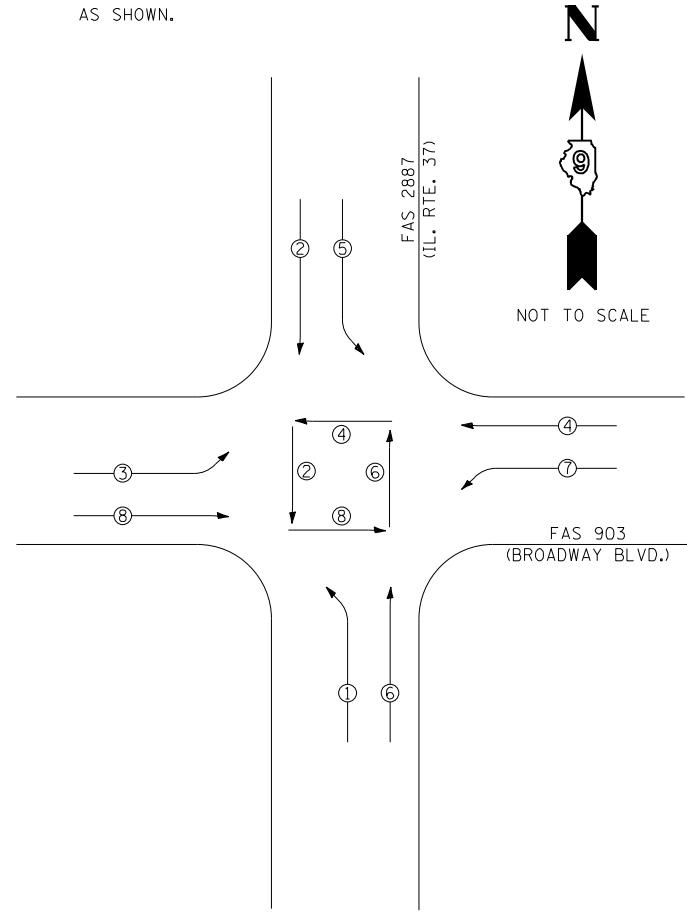
- LEGEND**
- INDICATES STEEL MAST ARM ASSEMBLY
 - INDICATES COMBINATION STEEL MAST ARM ASSEMBLY
 - INDICATES SIGNAL HEAD BRACKET MOUNTED TO 16 FT POLE
 - INDICATES TRAFFIC SIGNAL CONTROLLER
 - INDICATES DRILL HOLE
 - INDICATES PULL BOX
 - INDICATES CONCRETE HANDHOLE
 - INDICATES DETECTOR LOOP, UNLESS OTHERWISE NOTED
 - INDUCTIVE LOOP DETECTOR WITH SYSTEM OUTPUT
 - NUMBER IN CIRCLE INDICATES NUMBER OF CONDUCTORS IN THAT CABLE

PHASE DESIGNATION DIAGRAM

NOTE:

CONTROLLER SPECIFIED IS A FULL-ACTUATED CONTROLLER WITH A TYPE 4 CABINET.

REFERRING TO STANDARD 857001, THE VEHICULAR AND PEDESTRIAN PHASES USED ARE DESIGNATED AS SHOWN.



LEGEND

- VEHICULAR MOVEMENT
- PEDESTRIAN MOVEMENT
- NUMBER REFERS TO ASSOCIATED PHASE

MODEL: Default FILE NAME: p:\pub\amr\room.dwg PROJECT: 78812 CAD DATA: CAD: Project: 9/19/2021 10:00:00 AM

USER NAME = brandonja	DESIGNED -	REVISED -
PLOT SCALE = 13,0000 * / in.	DRAWN -	REVISED -
PLOT DATE = 3/19/2021	CHECKED -	REVISED -
	DATE -	REVISED -

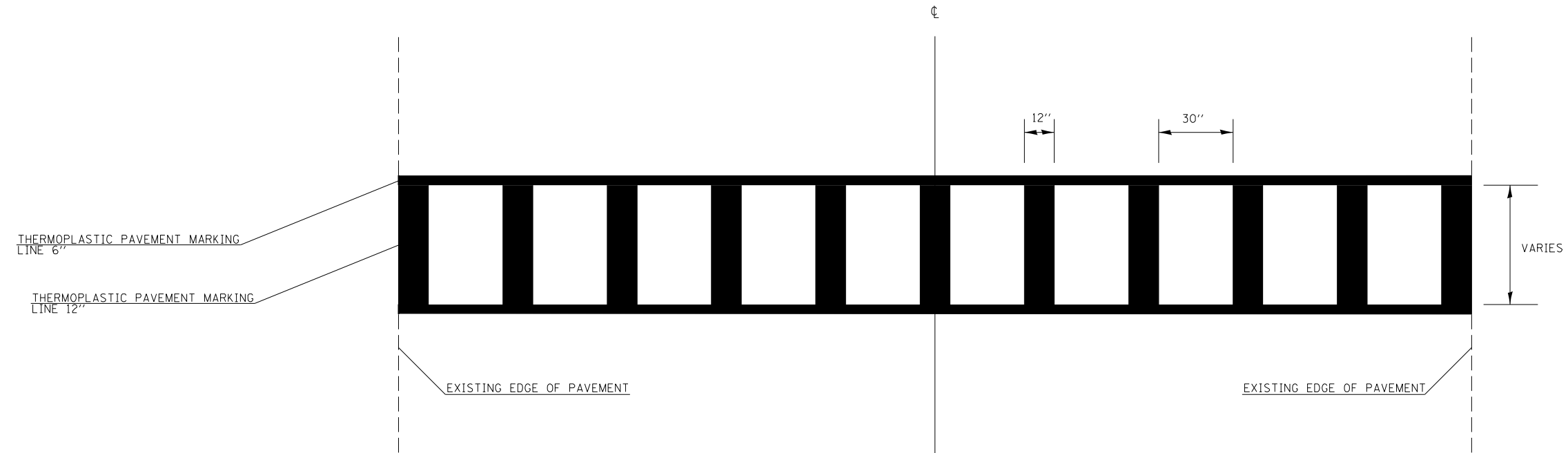
STATE OF ILLINOIS
DEPARTMENT OF TRANSPORTATION

PROPOSED CABLE AND PHASE DESIGNATION DIAGRAM FOR
PED. SIGNALS AT LOCATION # 3 - IL 37 & BROADWAY BOULEVARD

SCALE: SHEET OF SHEETS STA. TO STA.

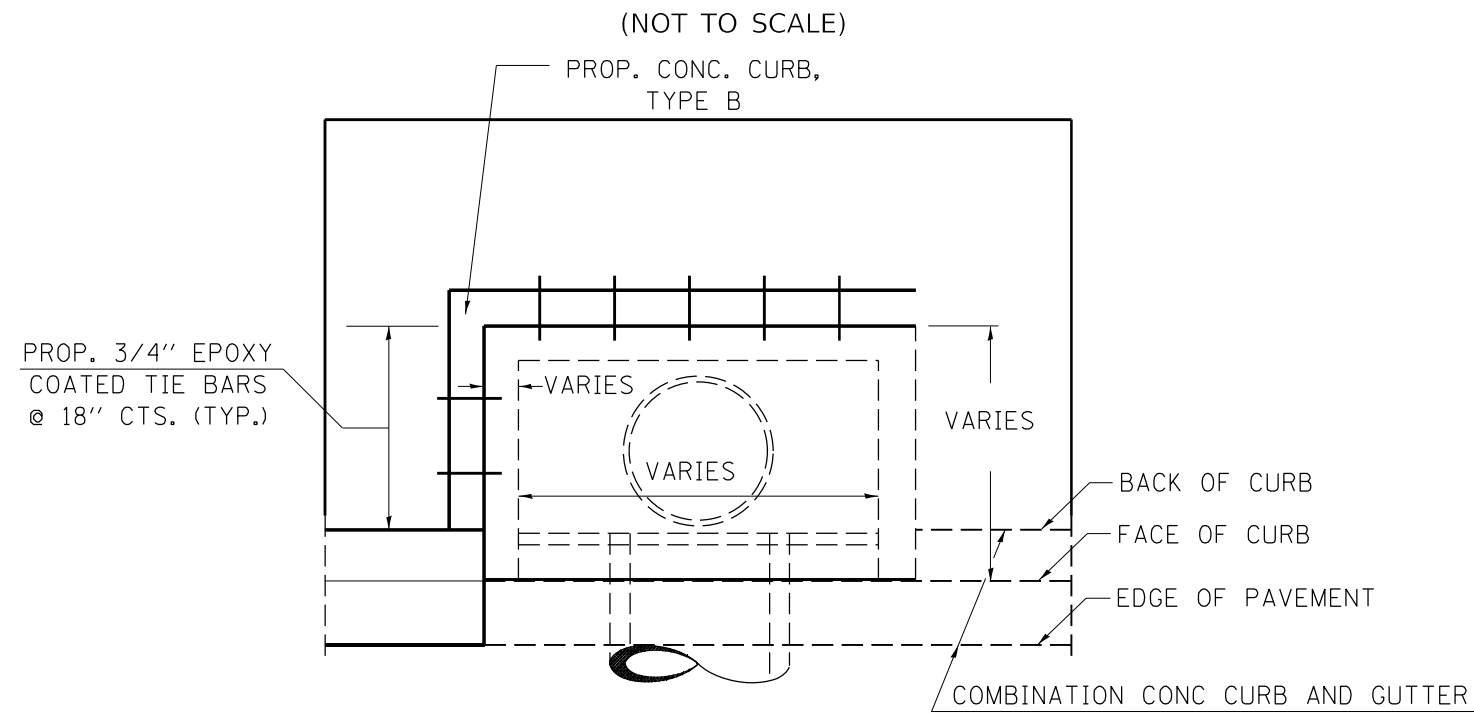
F.A. RTE.	SECTION	COUNTY	TOTAL SHEETS	SHEET NO.
-	D9 ADA Ramp 2021-1	VARIOUS	33	29
			CONTRACT NO. 78812	

CROSSWALK PAVEMENT MARKING DETAIL



TO BE USED AT:
LOCATION #1
LOCATION #3

TIE BARS FOR PROPOSED CURB AND EXISTING INLETS DETAIL



PLAN

MODEL: Default
 FILE NAME: p:\hammon.dwg
 PROJECT: 78812_CADData\CADProjects\0778812_Site\Rev\Detail.dwg

USER NAME = brandonja	DESIGNED -	REVISED -
	DRAWN -	REVISED -
PLOT SCALE = 100,0000' / in.	CHECKED -	REVISED -
PLOT DATE = 3/19/2021	DATE -	REVISED -

STATE OF ILLINOIS
DEPARTMENT OF TRANSPORTATION

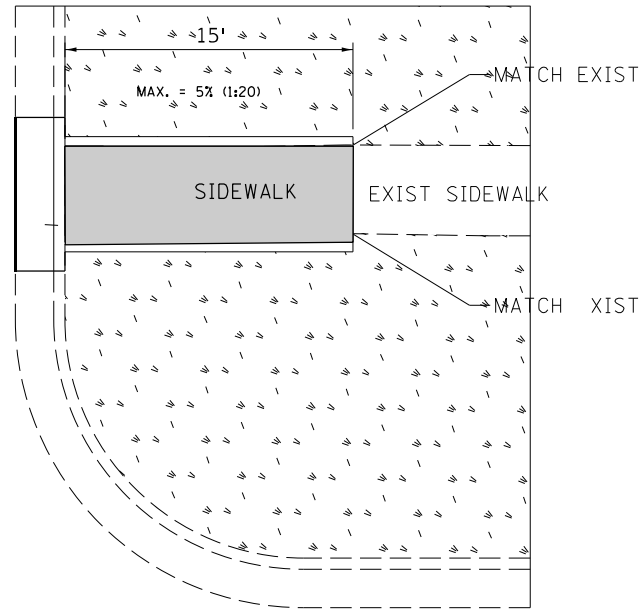
CROSSWALK PAVEMENT MARKING DETAIL AND
EXISTING INLET WITH PROPOSED TIE BARS DETAIL

SCALE: SHEET OF SHEETS STA. TO STA.

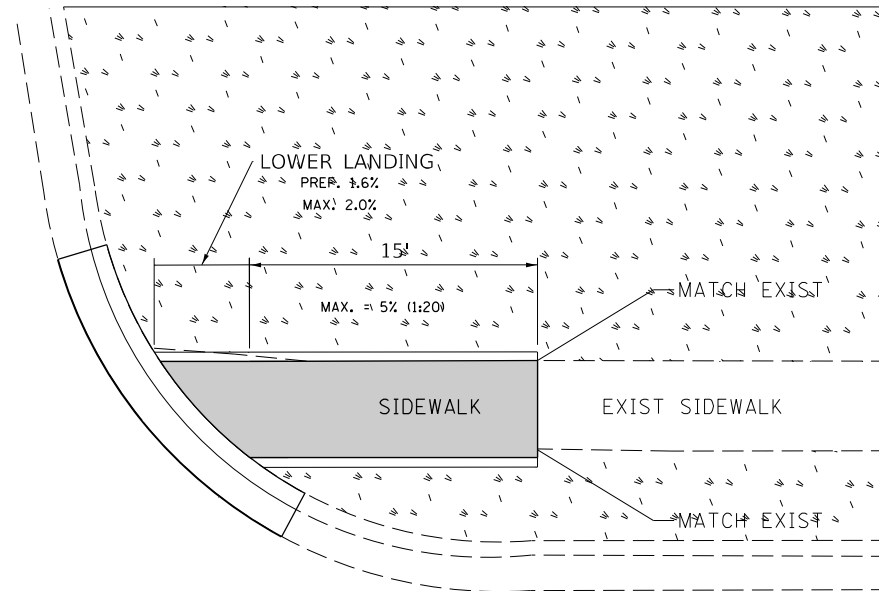
F.A. RTE.	SECTION	COUNTY	TOTAL SHEETS	SHEET NO.
-	D9 ADA Ramp 2021-1	VARIOUS	33	30
			CONTRACT NO. 78812	

ADA DETAIL FOR SINGLE PERPENDICULAR CURB RAMPS W/ EXIST. 5% OR LESS RUN. SLOPE

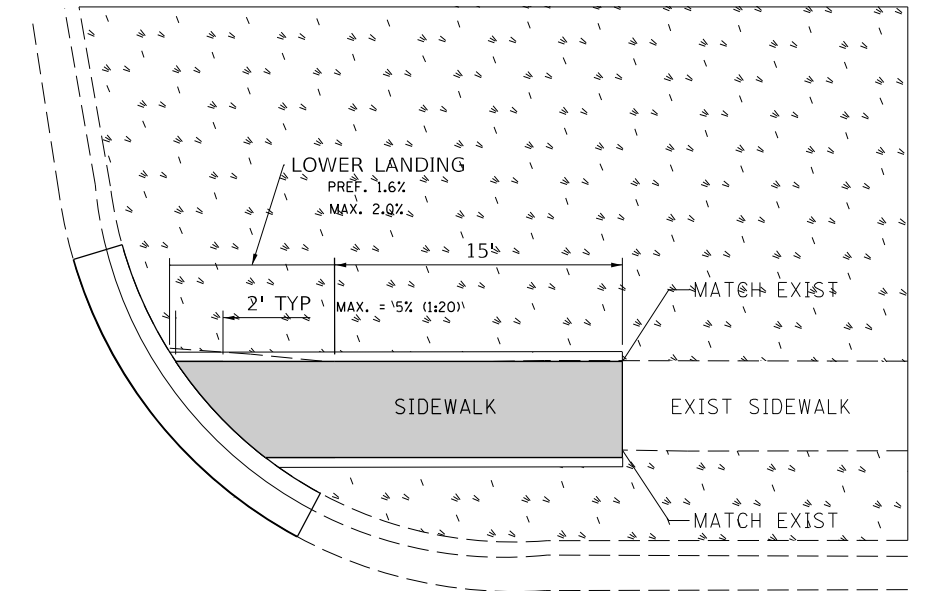
PD-01A



PD-01B



PD-01C



LEGEND

- PROPOSED SIDE CURB
- EXIST. GRASS
- PROPOSED SIDEWALK
- DETECTABLE WARNINGS

CONSTRUCTION NOTES:

- 1) ALL CROSS SLOPES ARE PREFERRED 1.6% (1:64), MAXIMUM 2% (1:50) EXCEPT WHEN TRANSITIONING TO EXISTING SIDEWALK

MODEL: Default
 FILE NAME: \\paulhammon.dad.illinois.gov\PI\DOT\Documents\DOT_Offices\District 9\Projects\78812\CADD\Drawings\PD-Details.dgn

USER NAME = brandonja	DESIGNED -	REVISED -
	DRAWN -	REVISED -
PLOT SCALE = 10,0000 * / in.	CHECKED -	REVISED -
PLOT DATE = 3/19/2021	DATE -	REVISED -

STATE OF ILLINOIS
DEPARTMENT OF TRANSPORTATION

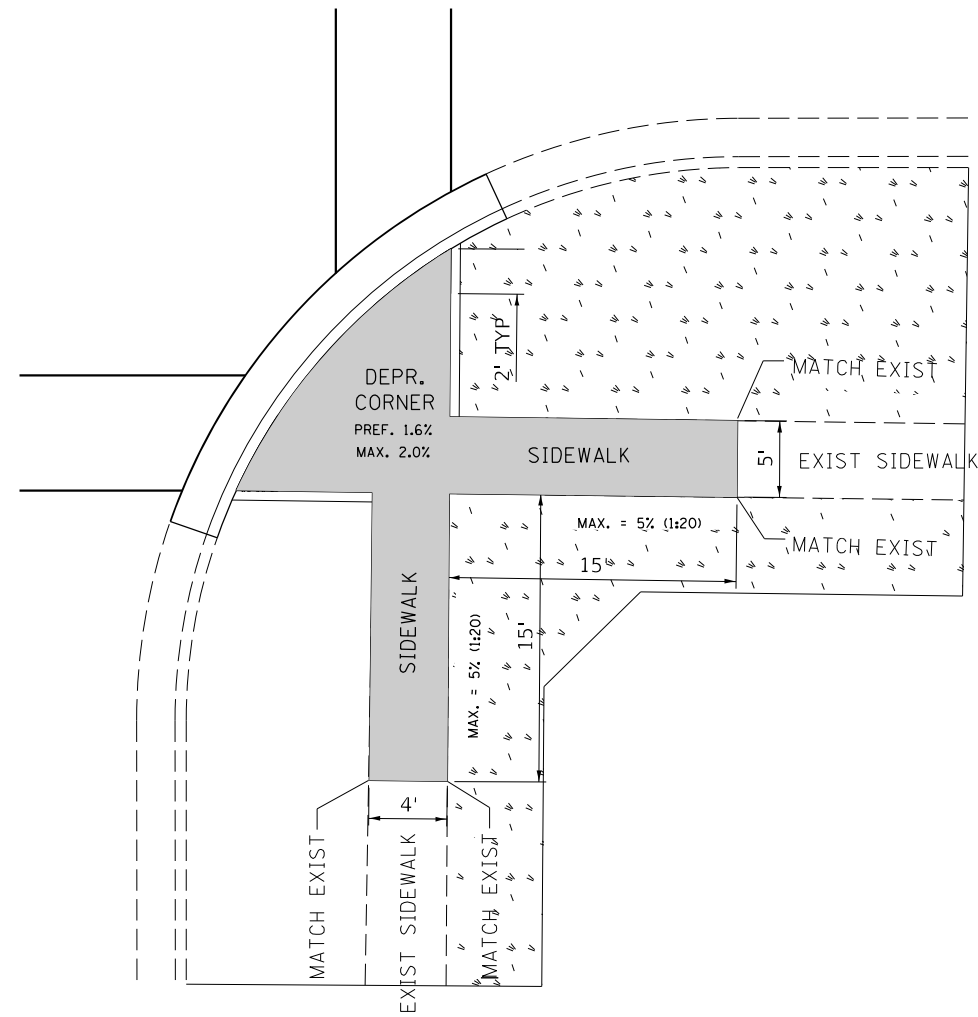
PROJECT DETAIL FOR SINGLE PERPENDICULAR CURB RAMPS
(PD-03)

SCALE: SHEET OF SHEETS STA. TO STA.

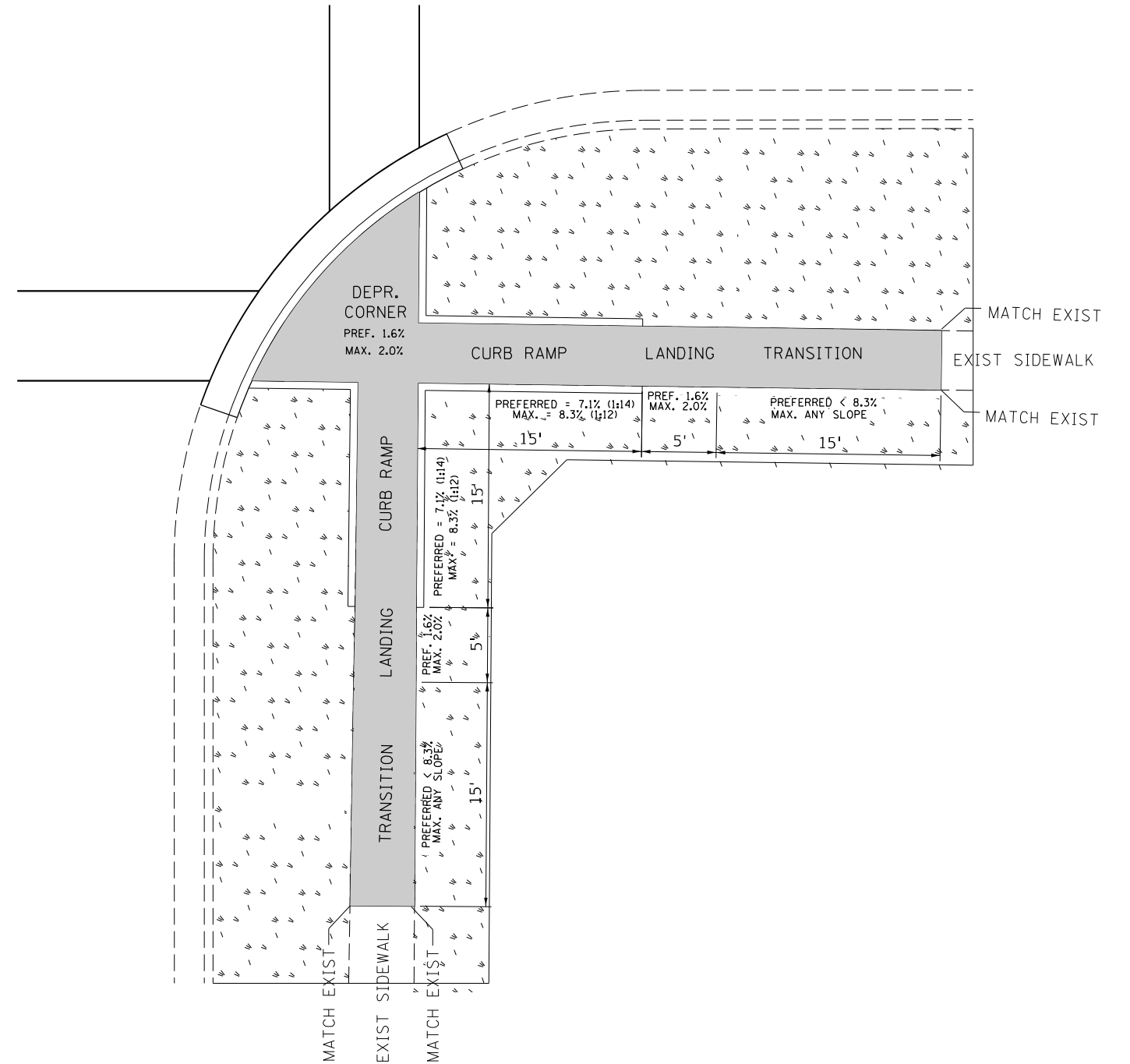
F.A. RTE.	SECTION	COUNTY	TOTAL SHEETS	SHEET NO.
-	D9 ADA Ramp 2021-1	VARIOUS	33	31
			CONTRACT NO. 78812	

ADA DETAIL FOR DEPRESSED CORNER CURB RAMPS

PD-05A



PD-05B



LEGEND

- PROPOSED SIDE CURB
- EXIST. GRASS
- PROPOSED SIDEWALK
- DETECTABLE WARNINGS

CONSTRUCTION NOTES:

1) ALL CROSS SLOPES ARE PREFERRED 1.6% (1:64), MAXIMUM 2% (1:50) EXCEPT WHEN TRANSITIONING TO EXISTING SIDEWALK

MODEL: Default
FILE NAME: p:\data\baronm.dwg
PROJECT: 78812_CADD\Drawings\DOT_Office\Drawings\9778812_CADD\Drawings\DOT_Office\Drawings\9778812_Site\Rev\Details.dwg

USER NAME = brandonja	DESIGNED -	REVISED -
	DRAWN -	REVISED -
PLOT SCALE = 10,0000 * / in.	CHECKED -	REVISED -
PLOT DATE = 3/19/2021	DATE -	REVISED -

**STATE OF ILLINOIS
DEPARTMENT OF TRANSPORTATION**

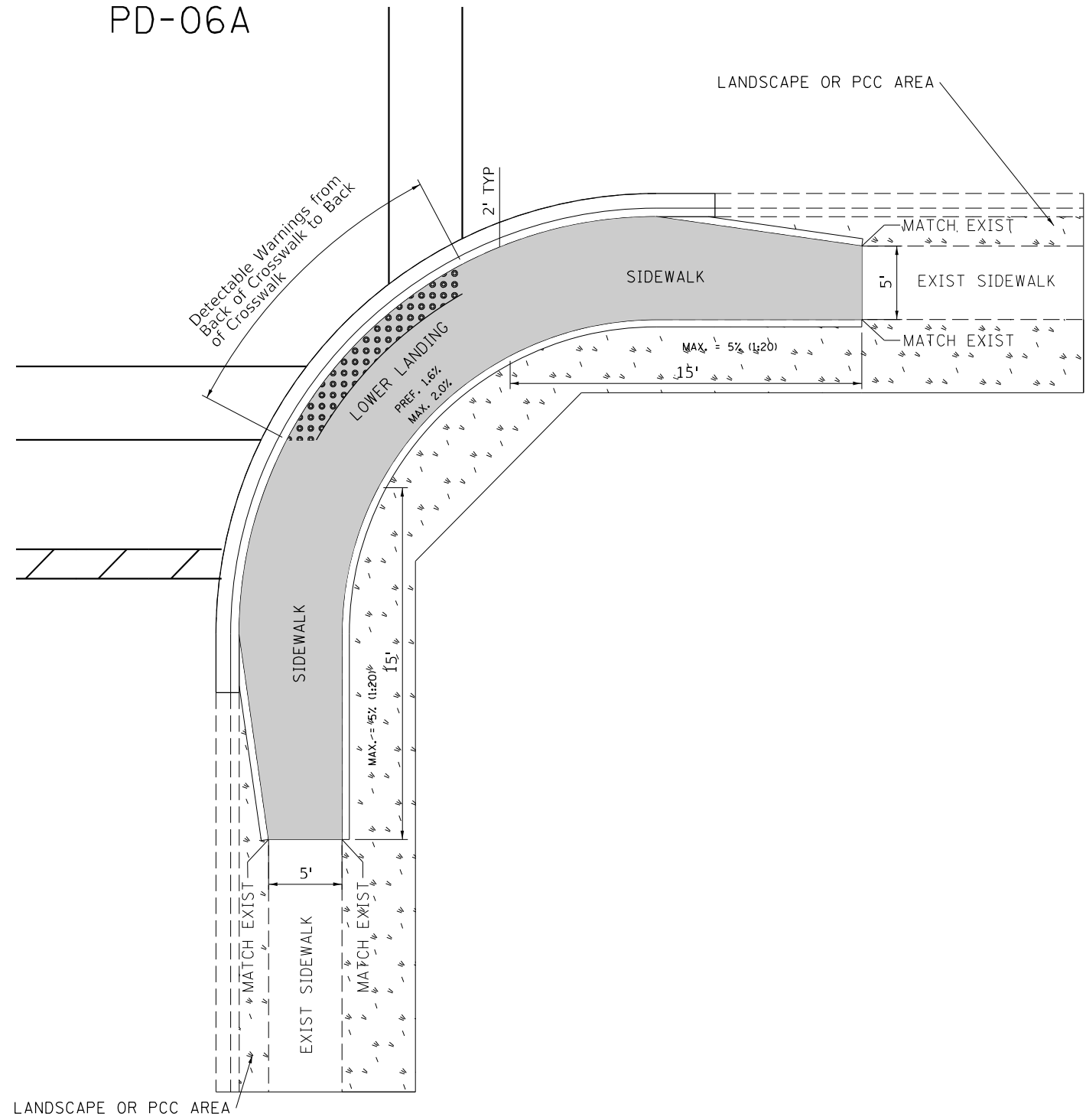
**PROJECT DETAIL FOR DOUBLE PERPENDICULAR CURB RAMPS
(PD-03)**

SCALE: SHEET OF SHEETS STA. TO STA.

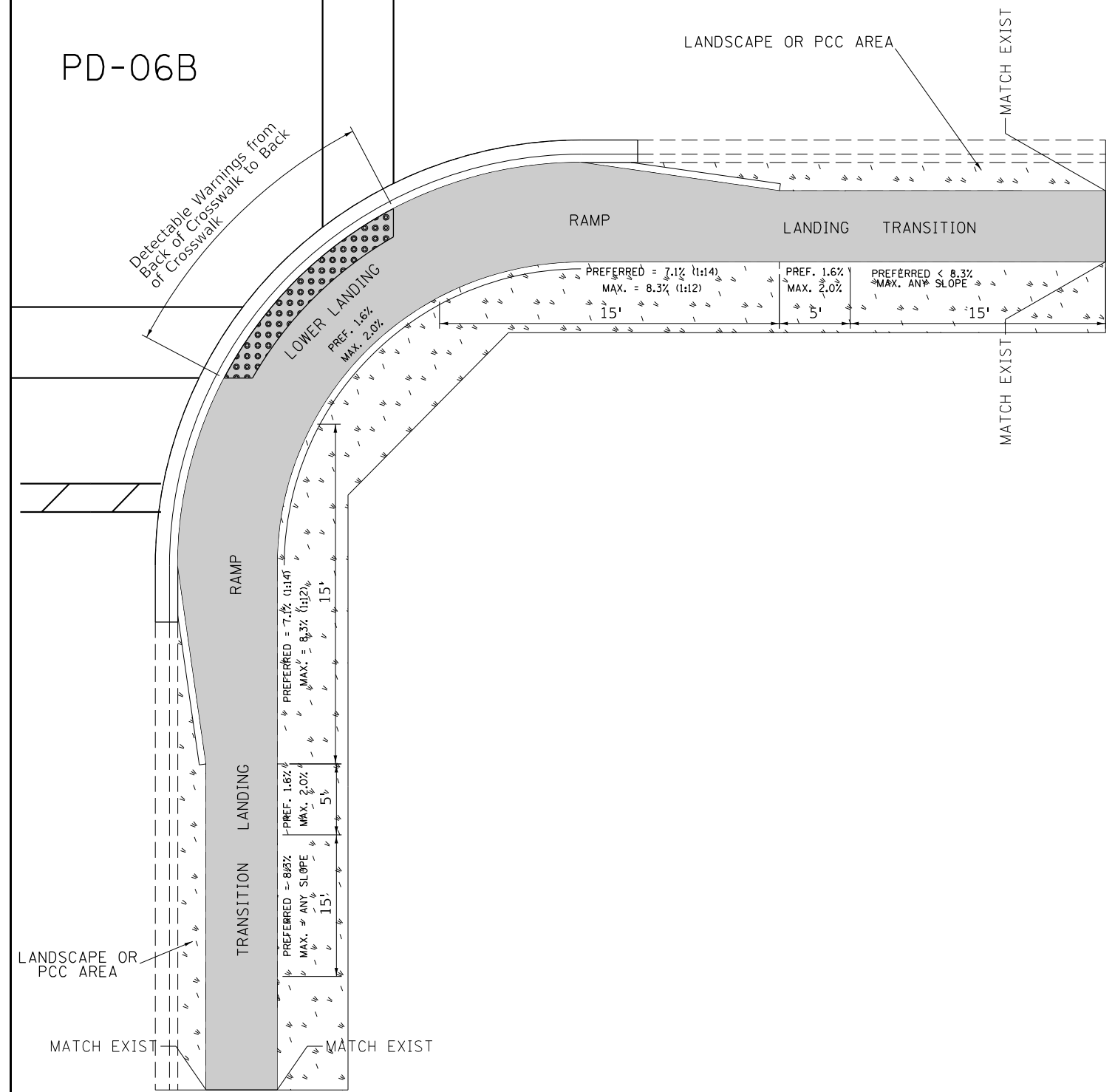
F.A. RTE.	SECTION	COUNTY	TOTAL SHEETS	SHEET NO.
-	D9 ADA Ramp 2021-1	VARIOUS	33	32
CONTRACT NO. 78812				

ADA DETAIL FOR PARALLEL CURB RAMPS ADJACENT TO LANDSCAPING

PD-06A



PD-06B



LEGEND

- PROPOSED SIDE CURB
- EXIST. GRASS
- PROPOSED SIDEWALK
- DETECTABLE WARNINGS

CONSTRUCTION NOTES:
 1) ALL CROSS SLOPES ARE PREFERRED 1.6% (1:64), MAXIMUM 2% (1:50) EXCEPT WHEN TRANSITIONING TO EXISTING SIDEWALK

MODEL: Default
 FILE NAME: p:\data\baronon.dwg
 PROJECT: 78812.CADD\data\CAD\projects\DOT - Office\Detail\78812_Site\Rev\Detail.dwg

USER NAME = brandonja	DESIGNED -	REVISED -	
	DRAWN -	REVISED -	
PLOT SCALE = 10,0000 * / in.	CHECKED -	REVISED -	
PLOT DATE = 3/19/2021	DATE -	REVISED -	

**STATE OF ILLINOIS
DEPARTMENT OF TRANSPORTATION**

**PROJECT DETAIL FOR PARALLEL CURB RAMPS
(PD-06)**

SCALE: SHEET OF SHEETS STA. TO STA.

F.A. RTE.	SECTION	COUNTY	TOTAL SHEETS	SHEET NO.
-	D9 ADA Ramp 2021-1	VARIOUS	33	33
ILLINOIS FED. AID PROJECT			CONTRACT NO. 78812	