



CONTACT JULIE AT 811
OR 800-892-0123
With the following:
County MADISON
City / Township CITY OF WOOD RIVER
Sec & 1/4 Sec No. NE. 1/4 OF SEC. 21 T.5N., R.9W.
48 HOURS (2 working days) BEFORE YOU DIG

06-11-2021 LETTING ITEM 143

STATE OF ILLINOIS
DEPARTMENT OF TRANSPORTATION
STP FUNDS

SECTION	COUNTY	TOTAL SHEETS	SHEET NO.
18-00052-00-PV	MADISON	39	1
19-00052-01-PV			
FEDERAL AID PROJECT		CONTRACT NO. 97754	

WOOD RIVER AVE.

SECTION 18-00052-00-PV
SECTION 19-00052-01-PV
FAU ROUTE 9006
PROJECT 17W8(646)
VILLAGE OF EAST ALTON, ILLINOIS
MADISON COUNTY
JOB C-98-004-22

AGENCIES KNOWN TO HAVE FACILITIES WITHIN THE PROJECT AREA ARE AS FOLLOWS:

- * CHARTER COMMUNICATIONS
4767 SIGNATURE INDUSTRIAL DRIVE
EDWARDSVILLE, IL 62025
(618) 779-4179
- * WOOD RIVER PUBLIC SERVICES
100 ANDERSON AVE
WOOD RIVER, IL 62095
(618) 251-3122
WATER, STORM SEWER, & SANITARY SEWER
- * AT&T COMMUNICATIONS
203 GOETHE
COLLINSVILLE, IL 62234
(618) 346-6422
- * AMEREN ILLINOIS
2600 N. CENTER STREET
MARYVILLE, IL 62062
(618) 346-1244 (GAS)
- * AMEREN ILLINOIS
700 OAKWOOD AVENUE
P.O. BOX 478
ALTON, IL 62002
(618) 463-4041
- * AMEREN ILLINOIS
700 OAKWOOD AVENUE
P.O. BOX 478
ALTON, IL 62002
(618) 463-4027

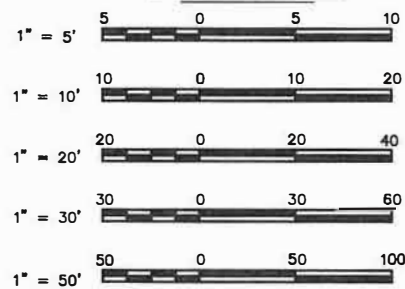
INDEX TO SHEETS

1. COVER SHEET
2. GENERAL NOTES, LEGENDS, CONTROL POINTS AND COMMITMENTS
3. SUMMARY OF QUANTITIES
- 4.-5. TYPICAL SECTIONS
6. SCHEDULES
- 7.-8. REMOVAL PLAN
- 9.-11. PLAN AND PROFILE
12. TRAFFIC CONTROL PLAN AND DETOUR PLAN
- 13.-14. EROSION CONTROL PLAN
- 15.-16. PAVEMENT MARKING & SIGNING
- 17.-19. CONSTRUCTION DETAILS
- 20.-21. MISCELLANEOUS DETAILS
- 22.-39. CROSS SECTIONS

HIGHWAY STANDARDS

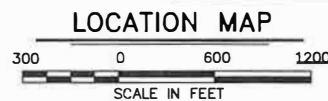
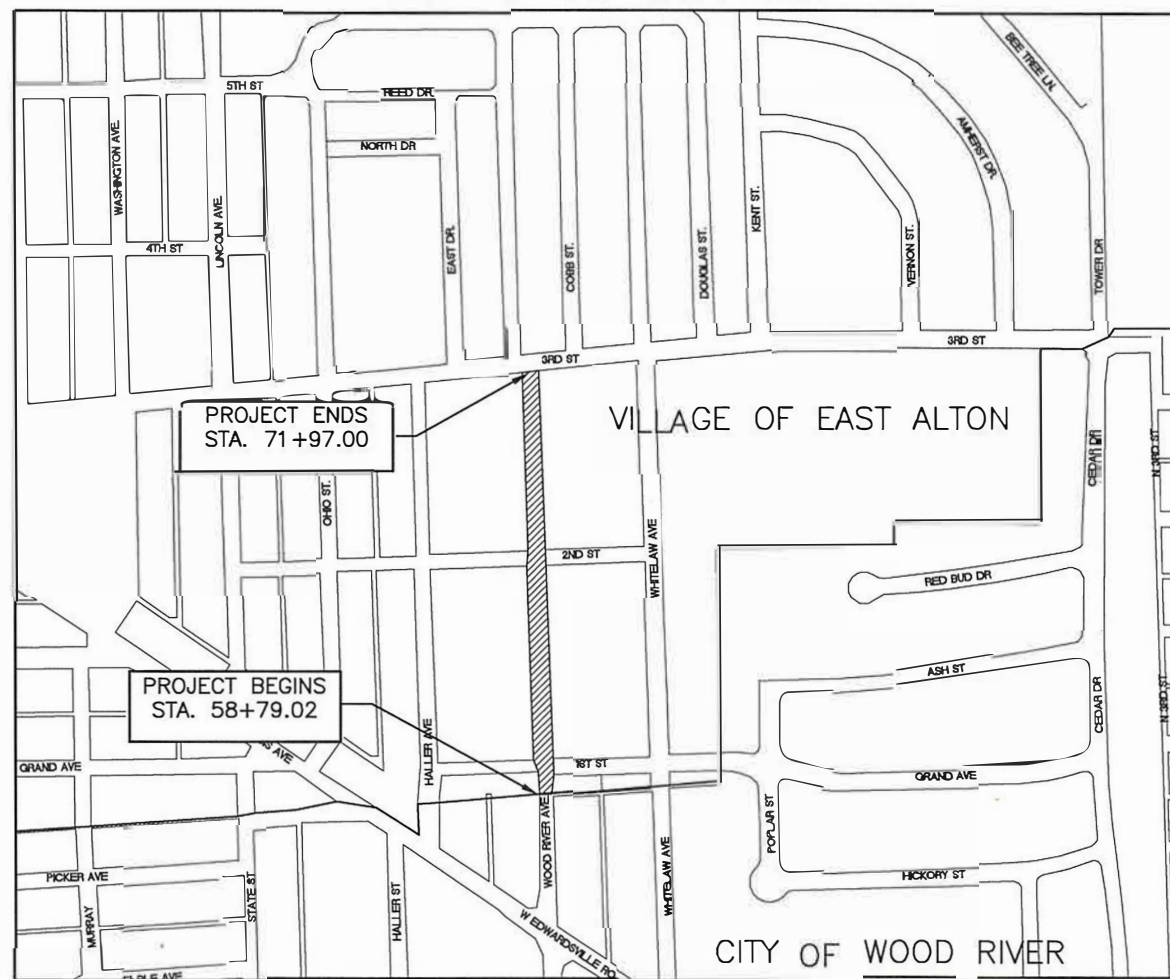
000001-08	604001-05	720001-01
001001-02	604006-05	720006-04
001006	604011-05	728001-01
280001-07	604086-04	780001-05
424001-11	701006-05	
424011-04	701011-04	
442201-03	701201-05	
602301-04	701301-04	
602306-03	701311-03	
602401-07	701501-06	
602601-06	701801-06	
602701-02	701901-08	

SCALES



FULL SIZE PLANS HAVE BEEN PREPARED USING STANDARD ENGINEERING SCALES. REDUCED SIZED PLANS WILL NOT CONFORM TO STANDARD SCALES. IN MAKING MEASUREMENTS ON REDUCED PLANS THE ABOVE SCALES MAY BE USED.

FUNCTIONAL CLASSIFICATION: MAJOR COLLECTOR
DESIGN SPEED = 30 M.P.H.
ADT: 3,050 (2016), 3,240 (2022)



GROSS LENGTH OF PROJECT = 1317.98 FEET = 0.250 MILES
NET LENGTH OF PROJECT = 1317.98 FEET = 0.250 MILES



LOCATION OF SECTION INDICATED THUS:-

STATE OF ILLINOIS
DEPARTMENT OF TRANSPORTATION

APPROVED: *March 24, 2021*
Joe Silkwood
MAYOR

PASSED: *March 30, 2021*
And Schwaab
DISTRICT 8 ENGINEER OF LOCAL ROADS & STREETS

RELEASING FOR BID
BASED UPON LIMITED
REVIEW: *March 30, 2021*
Keith Robertson
REGIONAL ENGINEER

STATE OF ILLINOIS
DEPARTMENT OF TRANSPORTATION
PRINTED BY AUTHORITY OF THE STATE OF ILLINOIS



DATE SIGNED 3-24-2021
EXPIRATION DATE 11-30-2021

MARCH, 2021



Sheppard Morgan & Schwaab, Inc.
CONSULTING ENGINEERS & LAND SURVEYORS
215 Market Street
Alton, Illinois 62002
618/462-9755

DESIGN FIRM REGISTRATION
NO. 184-000992

SUMMARY OF QUANTITIES

CONSTRUCTION TYPE CODE		0004	
CODE NO.	ITEM	UNIT	QUANTITY
20200100	EARTH EXCAVATION	CU YD	805
20201200	REMOVAL AND DISPOSAL OF UNSUITABLE MATERIAL	CU YD	10
20800150	TRENCH BACKFILL	CU YD	679
25000400	NITROGEN FERTILIZER NUTRIENT	POUND	37
25000500	PHOSPHORUS FERTILIZER NUTRIENT	POUND	37
25000600	POTASSIUM FERTILIZER NUTRIENT	POUND	37
25100115	MULCH, METHOD 2	ACRE	0.50
28000250	TEMPORARY EROSION CONTROL SEEDING	POUND	42
28000500	INLET AND PIPE PROTECTION	EACH	16
30200650	PROCESSING MODIFIED SOIL 12"	SQ YD	5,732
30201700	PORTLAND CEMENT	TON	209
31101000	SUBGRADE GRANULAR MATERIAL, TYPE B	TON	20
40201000	AGGREGATE FOR TEMPORARY ACCESS	TON	294
40600290	BITUMINOUS MATERIALS (TACK COAT)	POUND	2,268
40600990	TEMPORARY RAMP	SQ YD	410
40603085	HOT-MIX ASPHALT BINDER COURSE, IL-19.0, N70	TON	1,835
40604152	POLYMERIZED HOT-MIX ASPHALT SURFACE COURSE, IL-9.5, MIX "C", N70	TON	423
40800025	BITUMINOUS MATERIALS (PRIME COAT)	POUND	127
40800050	INCIDENTAL HOT-MIX ASPHALT SURFACING	TON	26
42300200	PORTLAND CEMENT CONCRETE DRIVEWAY PAVEMENT, 6 INCH	SQ YD	882
42400100	PORTLAND CEMENT CONCRETE SIDEWALK 4 INCH	SQ FT	11,366
42400800	DETECTABLE WARNINGS	SQ FT	140
44000100	PAVEMENT REMOVAL	SQ YD	4,163
44000200	DRIVEWAY PAVEMENT REMOVAL	SQ YD	811
44000600	SIDEWALK REMOVAL	SQ FT	11,326
54248510	CONCRETE COLLAR	CU YD	2
550A0050	STORM SEWERS, CLASS A, TYPE 1 12"	FOOT	527

SUMMARY OF QUANTITIES

CONSTRUCTION TYPE CODE		0004	
CODE NO.	ITEM	UNIT	QUANTITY
550A0360	STORM SEWERS, CLASS A, TYPE 2 15"	FOOT	536
550A0380	STORM SEWERS, CLASS A, TYPE 2 18"	FOOT	50
550A0410	STORM SEWERS, CLASS A, TYPE 2 24"	FOOT	73
55100500	STORM SEWER REMOVAL 12"	FOOT	62
55100900	STORM SEWER REMOVAL 18"	FOOT	55
55101200	STORM SEWER REMOVAL 24"	FOOT	118
56109210	WATER VALVES TO BE ADJUSTED	EACH	9
60108100	PIPE UNDERDRAINS 4" (SPECIAL)	FOOT	360
60218300	MANHOLES, TYPE A, 4'-DIAMETER, TYPE 1 FRAME, OPEN LID	EACH	1
60218500	MANHOLES, TYPE A, 4'-DIAMETER, TYPE 3 FRAME AND GRATE	EACH	2
60235700	INLETS, TYPE A, TYPE 3 FRAME AND GRATE	EACH	6
60240210	INLETS, TYPE B, TYPE 1 FRAME, OPEN LID	EACH	1
60240220	INLETS, TYPE B, TYPE 3 FRAME AND GRATE	EACH	1
60240327	INLETS, TYPE B, TYPE 23 FRAME AND GRATE	EACH	1
60255800	MANHOLES TO BE ADJUSTED WITH NEW TYPE 1 FRAME, CLOSED LID	EACH	3
60500060	REMOVING INLETS	EACH	4
60600605	CONCRETE CURB, TYPE B	FOOT	11
60603800	COMBINATION CONCRETE CURB AND GUTTER, TYPE B-6.12	FOOT	2,604
60605000	COMBINATION CONCRETE CURB AND GUTTER, TYPE B-6.24	FOOT	133
67000500	ENGINEER'S FIELD OFFICE, TYPE B	CAL MO	6
67100100	MOBILIZATION	L SUM	1
70300100	SHORT TERM PAVEMENT MARKING	FOOT	321
70300150	SHORT TERM PAVEMENT MARKING REMOVAL	SQ FT	107
70300220	TEMPORARY PAVEMENT MARKING - LINE 4"	FOOT	2,689
70300240	TEMPORARY PAVEMENT MARKING - LINE 6"	FOOT	301
70300260	TEMPORARY PAVEMENT MARKING - LINE 12"	FOOT	63
70300280	TEMPORARY PAVEMENT MARKING - LINE 24"	FOOT	42

SUMMARY OF QUANTITIES

CONSTRUCTION TYPE CODE		0004	
CODE NO.	ITEM	UNIT	QUANTITY
* 72000100	SIGN PANEL - TYPE 1	SQ FT	81
* 72800100	TELESCOPING STEEL SIGN SUPPORT	FOOT	298
* 78000200	THERMOPLASTIC PAVEMENT MARKING - LINE 4"	FOOT	2,689
* 78000400	THERMOPLASTIC PAVEMENT MARKING - LINE 6"	FOOT	301
* 78000600	THERMOPLASTIC PAVEMENT MARKING - LINE 12"	FOOT	63
* 78000650	THERMOPLASTIC PAVEMENT MARKING - LINE 24"	FOOT	42
* 78001110	PAINT PAVEMENT MARKING - LINE 4"	FOOT	100
* 78001150	PAINT PAVEMENT MARKING - LINE 12"	FOOT	17
X2010400	STUMP REMOVAL ONLY	UNIT	163
X2501010	SEEDING, CLASS 2 (MODIFIED)	ACRE	0.50
* X2600011	REMOVE AND RELOCATE SIGN PANEL	EACH	10
X3400004	RETAINING WALL REMOVAL	FOOT	53
X4400196	HOT- MIX ASPHALT SURFACE REMOVAL, SPECIAL	SQ YD	115
* X5091765	PIPE HANDRAIL, SPECIAL	FOOT	6
X6020074	INLETS, TYPE A, TYPE 3V FRAME AND GRATE	EACH	2
X6020075	INLETS, TYPE B, TYPE 3V FRAME AND GRATE	EACH	2
X6024240	INLETS, SPECIAL	EACH	2
X7010216	TRAFFIC CONTROL AND PROTECTION, (SPECIAL)	L SUM	1
X7030005	TEMPORARY PAVEMENT MARKING REMOVAL	SQ FT	1,194
* X7240300	SIGN REMOVAL	EACH	12
* X7350010	SIGN SUPPORT BRACKET	EACH	2
Z0012450	CONCRETE STEPS	CU YD	1
Z0056648	STORM SEWERS, TYPE 1, WATER MAIN QUALITY PIPE, 12"	FOOT	136
# Z0076600	TRAINEEES	Hour	1,000
Z0056668	STORM SEWERS, TYPE 2, WATER MAIN QUALITY PIPE, 12"	FOOT	52
# Z0076604	TRAINEEES TRAINING PROGRAM GRADUATE	Hour	1,000
Z0056672	STORM SEWERS, TYPE 2, WATER MAIN QUALITY PIPE, 24"	FOOT	54

* DENOTES SPECIALTY ITEM

0042

REVISIONS

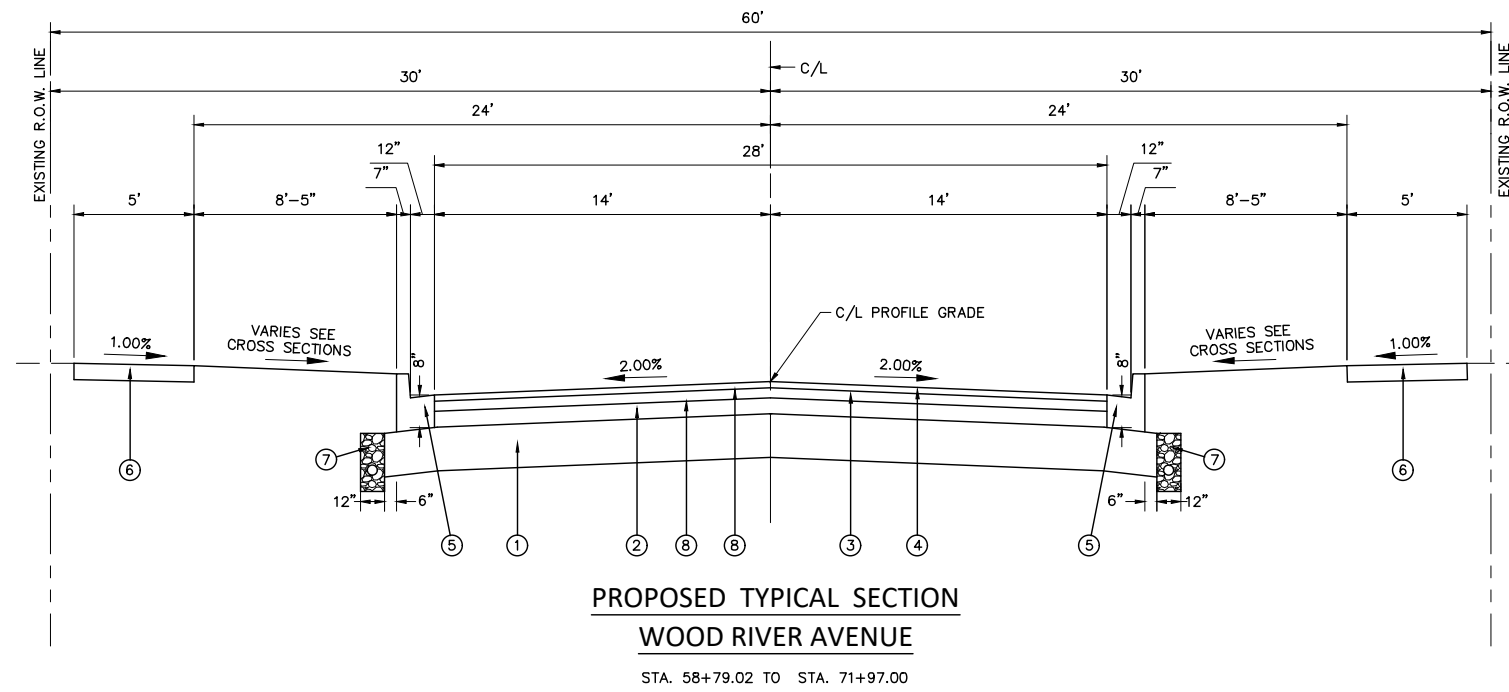
Sheppard, Morgan & Schwaab, Inc.
 CONSULTING ENGINEERS AND LAND SURVEYORS
 215 Market Street, Alton, IL 62002 618/462-9755 E-mail: mail@smsengineers.com
SMS ENGINEERS

VILLAGE OF EAST ALTON, ILLINOIS
 SECTION 18-00052-00-PV / 19-00052-01-PV
 WOOD RIVER AVENUE
 SUMMARY OF QUANTITIES

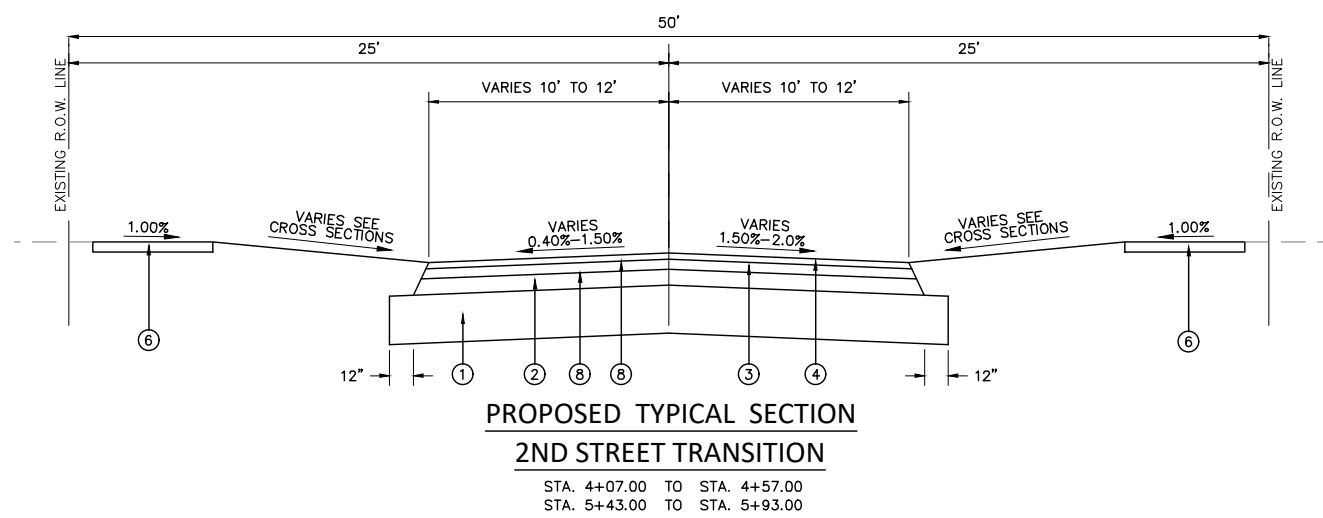
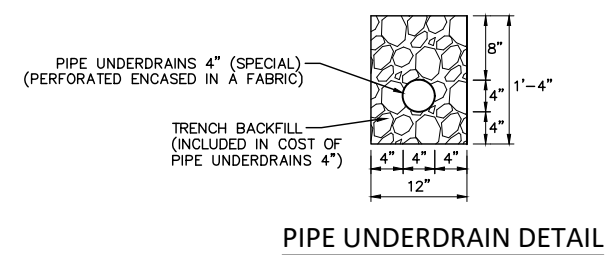
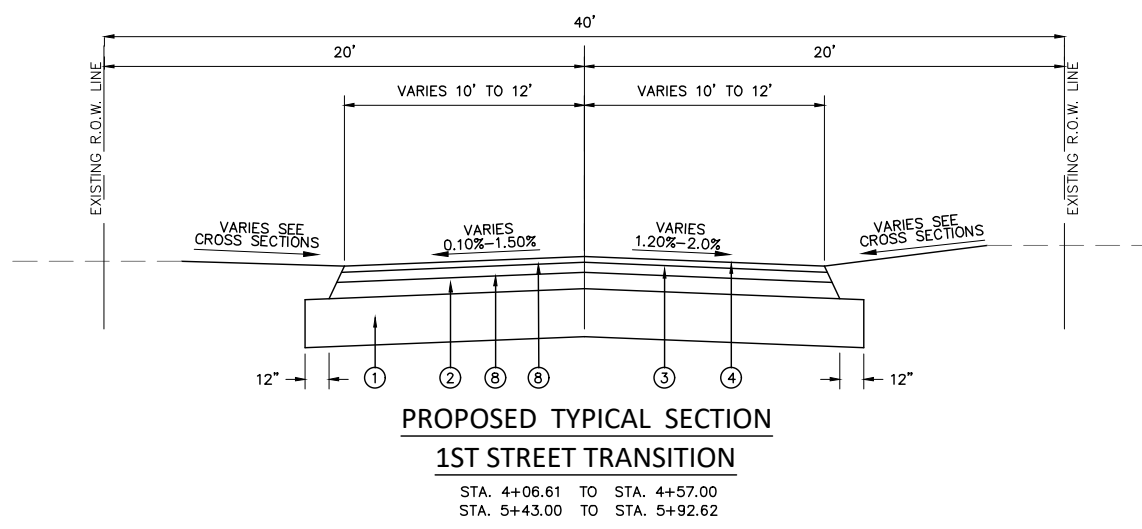
CONTRACT NO.
97754

REF. BK. PG.
 JOB NO. 52008.1
 DSN. BY: DEG
 DWN. BY: DEG
 CHK. BY: DEG
 DATE: MARCH 2021

SCALE:
 SHEET 3 OF 39



- PAVING LEGEND**
- ① PROCESSING MODIFIED SOIL 12"
 - ② PROPOSED HMA BINDER COURSE, IL-19.0, N70 (4")
 - ③ PROPOSED HMA BINDER COURSE, IL-19.0, N70 (2-1/2")
 - ④ PROPOSED POLYMERIZED HMA SURFACE COURSE, MIX "C", N70 (1-1/2")
 - ⑤ PROPOSED COMBINATION CONCRETE CURB AND GUTTER TYPE B-6.12
 - ⑥ PROPOSED PORTLAND CEMENT CONCRETE SIDEWALK 4 INCH
 - ⑦ PIPE UNDERDRAINS 4"(SPECIAL) SEE DETAIL. SEE SCHEDULE FOR LOCATIONS. OUTLET PIPE UNDERDRAINS TO STORM SEWERS.
 - ⑧ PROPOSED BITUMINOUS MATERIALS (TACK COAT)



MIX DESIGNS			
MIXTURE USE	POLY SURFACE	BINDER	INCIDENTAL
AC/PG	SBS PG 70-22	PG 64-22	PG 64-22
MAX. RAP %	*	*	*
DESIGN AIR VOIDS	4% @ NDES = 70	4% @ NDES = 70	4% @ NDES = 70
MIX COMPOSITION (GRADATION MIXTURE)	IL-9.5	IL-19.0	----
FRICTION AGG.	MIX C	MIX C	MIX C

* SEE SPECIAL PROVISIONS

REVISIONS	
-----------	--

SMS Sheppard, Morgan & Schwaab, Inc.
CONSULTING ENGINEERS AND LAND SURVEYORS
215 Market Street, Alton, IL 62002 618/462-9755 E-mail: mail@smsengineers.com
DESIGN FIRM # 184-000992

VILLAGE OF EAST ALTON, ILLINOIS
SECTION 18-00052-00-PV / 19-00052-01-PV
WOOD RIVER AVENUE
TYPICAL SECTIONS

CONTRACT NO. 97754	
EA WR AVE TYP.DWG	
REF. BK.	PG.
JOB NO. 52008.1	
DSN. BY: DEG	
DWN. BY: CDP	
CHK. BY: DEG	
DATE: MARCH, 2021	

EARTHWORK SCHEDULE

STATION	STATION	EARTH EXCAVATION (CU YD)	EARTH EXCAVATION ADJUSTED FOR SHRINKAGE (CU YD)	EMBANKMENT (CU YD)	EARTHWORK BALANCE (CU YD)
WOOD RIVER AVENUE					
58+79.02	66+05.87	401	301	41	260
66+05.87	71+97.00	294	221	37	184
1ST STREET					
4+06.61	4+56.81	30	23	1	22
5+42.81	5+92.62	24	18		18
2ND STREET					
4+07.00	4+57.00	29	22		22
5+43.00	5+93.00	28	22		22
TOTAL		805	605	80	530

EARTHWORK NOTES:

1. ESTIMATED SHRINKAGE FACTOR = 25%.

PIPE UNDERDRAIN SCHEDULE

STATION	OFFSET	PIPE UNDERDRAINS 4" (FOOT)
WOOD RIVER AVENUE		
59+47.36	38.73' LT	30
59+48.29	38.27' RT	30
59+73.91	38.50' LT	30
59+73.91	38.50' RT	30
65+92.83	38.50' LT	30
65+92.83	38.50' RT	30
66+18.91	38.50' LT	30
66+18.91	38.50' RT	30
69+01.30	15.04' LT	30
69+01.30	15.04' RT	30
71+23.46	15.04' LT	30
71+23.46	15.04' RT	30
TOTAL		360

SIGN AND POST SCHEDULE

STATION	OFFSET	TYPE	DESCRIPTION	DIMENSIONS (IN.)		SIGN PANEL T1 (SQ FT)	TELES STL SIN SUPPORT (FOOT)	REMOVE AND RELOCATE SIGN PANEL (EACH)	SIGN REMOVAL (EACH)	SIGN SUPPORT BRACKET (EACH)	COMMENT
				WIDTH	DEPTH						
WOOD RIVER AVENUE											
59+00.00	18.0' RT		NEW WINE FAMILY CHURCH	24	36		18	1			RELOCATED FROM 58+97 RT.
			FIRST UNITED METHODIST CHURCH	24	24			1			RELOCATED FROM 58+97 RT.
59+21.00	17.5' RT		MCT BUS SIGN	12	18		15	1			RELOCATED FROM 59+26 RT.
59+43.50	33.5' LT	R1-1	STOP SIGN	30	30		16	1			RELOCATED FROM 59+46 LT.
59+72.85	34.0' RT								1		EXISTING STOP AND STREET NAME SIGNS
59+78.00	33.5' RT	R1-1	STOP SIGN	30	30	6.3	16			1	
		D3-1	STREET NAME (WOOD RIVER AVE)	36	8	2.0					MOUNTED WITH STOP SIGN
		D3-1	STREET NAME (1ST ST)	36	8	2.0					MOUNTED WITH STOP SIGN
60+14.00	13.0' RT								1		EXISTING SPEED LIMIT AND NO PARKING SIGNS
60+15.00	18.0' RT	R2-1	SPEED LIMIT (25 MPH)	24	30	5.0	19				
			FIRST UNITED METHODIST CHURCH	24	24			1			RELOCATED FROM 60+24 LT.
		R7-2A	NO PARKING ANYTIME	12	18	1.5					
60+24.00	13.7' LT								1		EXISTING CHURCH SIGNS
60+24.00	18.0' LT		NEW WINE FAMILY CHURCH	24	36		16	1			RELOCATED FROM 60+24 LT.
60+49.00	17.5' RT		MCT BUS SIGN	12	18			1			RELOCATED FROM 60+46 RT.
65+02.50	18.3' RT	W11-2	PEDESTRIAN	30	30	6.3	17				
		W16-9P	AHEAD	24	12	2.0					
65+60.00	13.7' LT								1		EXISTING SPEED LIMIT SIGN
65+60.00	18.0' LT	R2-1	SPEED LIMIT (25 MPH)	24	30	5.0	17				
		R7-2A	NO PARKING ANYTIME	12	18	1.5					
65+83.50	33.5' LT	R1-1	STOP SIGN	30	30	6.3	16				
65+95.00	31.7' RT								1		EXISTING STOP SIGN
66+16.00	38.5' RT								1		EXISTING STOP SIGN
66+23.00	33.5' RT	R1-1	STOP SIGN	30	30		16	1		1	RELOCATED FROM 66+15' RT.
		D3-1	STREET NAME (WOOD RIVER AVE)	36	8	2.0					MOUNTED WITH STOP SIGN
		D3-1	STREET NAME (2ND ST)	36	8	2.0					MOUNTED WITH STOP SIGN
66+32.50	19.5' RT	W11-2	PEDESTRIAN	30	30	6.3	17				
		W16-7P	DOWNWARD DIAGONAL ARROW	24	12	2.0					
66+32.50	19.5' LT	W11-2	PEDESTRIAN	30	30	6.3	17				
		W16-7P	DOWNWARD DIAGONAL ARROW	24	12	2.0					
66+68.00	13.5' RT								1		EXISTING SPEED LIMIT SIGN
66+68.00	18.0' RT	R2-1	SPEED LIMIT (25 MPH)	24	30	5.0	17				
		R7-2A	NO PARKING ANYTIME	12	18	1.5					
67+25.00	13.5' RT								1		EXISTING NO PARKING SIGN
67+32.50	18.3' LT	W11-2	PEDESTRIAN	30	30	6.3	17				
		W16-9P	AHEAD	24	12	2.0					
67+42.00	13.6' LT								1		EXISTING NO PARKING SIGN
69+30.00	13.5' RT								1		EXISTING PEDESTRIAN SIGN
71+37.00	15.5' RT								1		EXISTING SPEED LIMIT SIGN
71+37.00	18.0' LT	R2-1	SPEED LIMIT (25 MPH)	24	30	5.0	17				
		R7-2A	NO PARKING ANYTIME	12	18	1.5					
71+53.50	17.5' RT		MCT BUS SIGN	12	18		15	1			RELOCATED FROM 71+52 RT.
71+76.00	21.0' RT	R1-1	STOP SIGN	30	30		16	1			RELOCATED FROM 71+67 RT.
		R1-3P	ALL WAY	18	6	0.8					
71+86.00	73.5' LT	R1-1	STOP SIGN	30	30		16		1		RELOCATED FROM 71+67 RT.
		R1-3P	ALL WAY	18	6	0.8					
TOTAL						81	298	10	12	2	

NOTES:

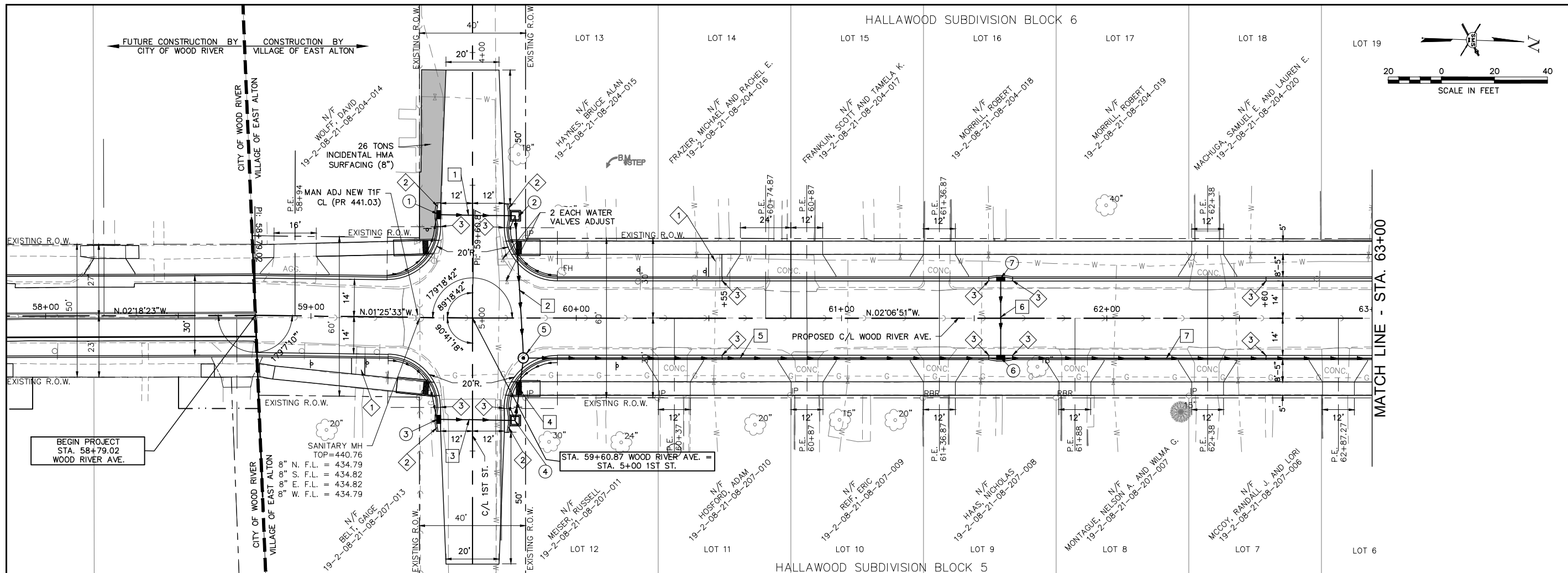
- ALL SIGNS SHALL BE LOCATED PER HIGHWAY STANDARD 720006 UNLESS OTHERWISE DIRECTED BY THE ENGINEER.
- STREET NAME SIGNS SHALL BE GREEN, SHALL BE PRINTED ON BOTH SIDES. THE ACTUAL LENGTH REQUIRED SHALL BE AS NEEDED TO ACCOMMODATE THE TEXT AND SHALL BE DETERMINED BY THE SIGN MANUFACTURER
- ALL PEDESTRIAN SIGNS SHALL BE FLUORESCENT YELLOW-GREEN (FYG) COLOR AND TYPE "AZ" SHEETING.

REVISIONS											
-----------	--	--	--	--	--	--	--	--	--	--	--

SMS Sheppard, Morgan & Schwaab, Inc.
 CONSULTING ENGINEERS AND LAND SURVEYORS
 2.15 Market Street, Alton, IL 62002 618/462-9755 E-mail: mail@smsengineers.com
ENGINEERS DESIGN FIRM # 184-000992

VILLAGE OF EAST ALTON, ILLINOIS
 SECTION 18-00052-00-PV / 19-00052-01-PV
 WOOD RIVER AVENUE
 SCHEDULES

CONTRACT NO. 97754
REF. BK. PG. JOB NO. 52008.1 DSN. BY: DEG DWN. BY: CDP CHK. BY: DEG DATE: MARCH, 2021
SCALE:
SHEET 6 OF 39



DRAINAGE STRUCTURES

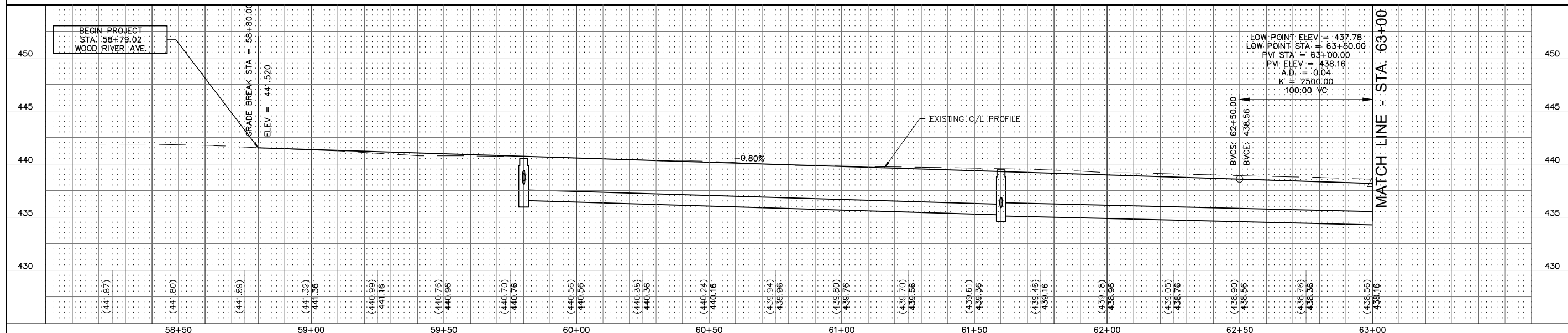
- ① INLETS TA T3F&G
STA. 59+47.36, 38.73' LT.
T.C. = 440.72
4" SE. F.L. = 438.48
12" N. F.L. = 438.44
- ② INLETS, SPECIAL
STA. 59+76.95, 38.50' LT.
T.C. = 440.72
4" NE. F.L. = 438.34
12" S. F.L. = 438.30
12" E. F.L. = 438.30
- ③ INLETS TA T3F&G
STA. 59+48.29, 38.27' RT.
T.C. = 440.66
4" SW. F.L. = 438.68
12" N. F.L. = 438.64
- ④ INLETS, SPECIAL
STA. 59+76.95, 38.50' RT.
T.C. = 440.72
4" NW. F.L. = 438.54
12" S. F.L. = 438.50
12" W. F.L. = 438.50
- ⑤ INLETS TB T1F OL
STA. 59+80.11, 15.04' RT.
TOP = 440.44
12" W. F.L. = 438.10
12" E. F.L. = 438.38
12" N. F.L. = 436.55
- ⑥ INLETS TB T3VF&G
STA. 61+60.00, 15.04' RT.
T.C. = 439.44
12" S. F.L. = 435.20
12" W. F.L. = 435.87
15" N. F.L. = 435.10
- ⑦ INLETS TA T3VF&G
STA. 61+60.00, 15.04' LT.
T.C. = 439.44
12" E. F.L. = 436.17

STORM SEWERS

- ① ① TO ② 29 FT. - STORM SEWERS, T1, WAT MN, 12" @ 0.50%
4 CU. YD. TRENCH BACKFILL
- ② ② TO ⑤ 54 FT. - STORM SEWERS, T1, WAT MN, 12" @ 0.37%
8 CU. YD. TRENCH BACKFILL
- ③ ③ TO ④ 29 FT. - STORM SEWERS, T1, WAT MN, 12" @ 0.50%
4 CU. YD. TRENCH BACKFILL
- ④ ④ TO ⑤ 24 FT. - STORM SEWERS, T1, WAT MN, 12" @ 0.50%
4 CU. YD. TRENCH BACKFILL
- ⑤ ⑤ TO ⑥ 185 FT. - STORM SEWERS, CL A, T1, 12" @ 0.68%
51 CU. YD. TRENCH BACKFILL
- ⑥ ⑦ TO ⑧ 30 FT. - STORM SEWERS, CL A, T1, 12" @ 1.00%
8 CU. YD. TRENCH BACKFILL
- ⑦ ⑥ TO ⑧ 205 FT. - STORM SEWERS, CL A, T1, 15" @ 0.60%
49 CU. YD. TRENCH BACKFILL

CONSTRUCTION NOTES

- ① BUS PADS SHALL BE A MINIMUM OF 5' WIDE. GRADES SHALL BE LESS THAN 2% IN ALL DIRECTIONS
- ② DEPRESS CURB IN 2'
- ③ EXPANSION JOINT PER DETAIL A HWY. STD. 606001



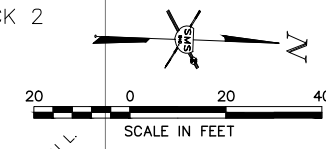
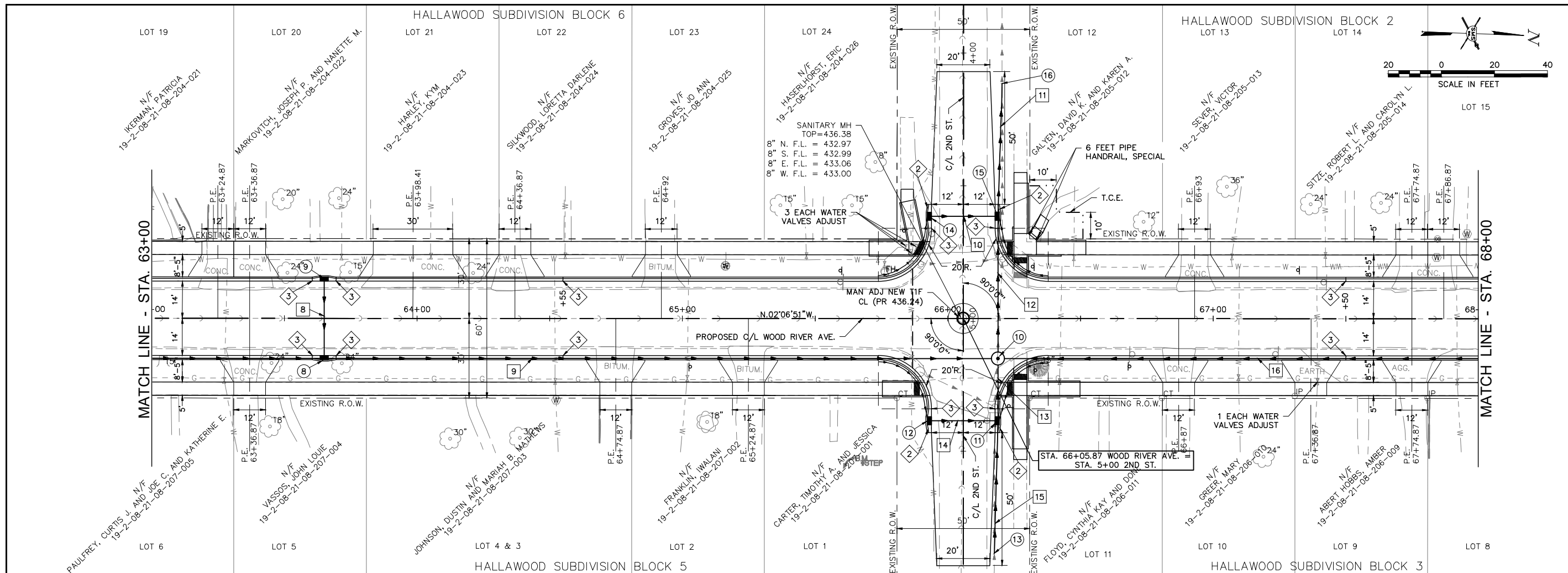
SMS ENGINEERS
 Sheppard, Morgan & Schwab, Inc.
 CONSULTING ENGINEERS AND LAND SURVEYORS
 215 Market Street, Alton, IL 62002 618.462.9755 E-mail: mail@smsengineers.com
 DESIGN FIRM # 184-000992

REVISIONS

VILLAGE OF EAST ALTON, ILLINOIS
 SECTION 18-00052-00-PV / 19-00052-01-PV
 WOOD RIVER AVENUE
 PLAN AND PROFILE

CONTRACT NO.
 97754

REF. BK.	PG.
JOB NO. 52008.1	
DSN. BY: DEG	
DWN. BY: CDP	
CHK. BY: DEG	
DATE: MARCH, 2021	
HORIZ: 1"=20'	
SCALE: VERT: 1"=5'	
SHEET 9 OF 39	



DRAINAGE STRUCTURES

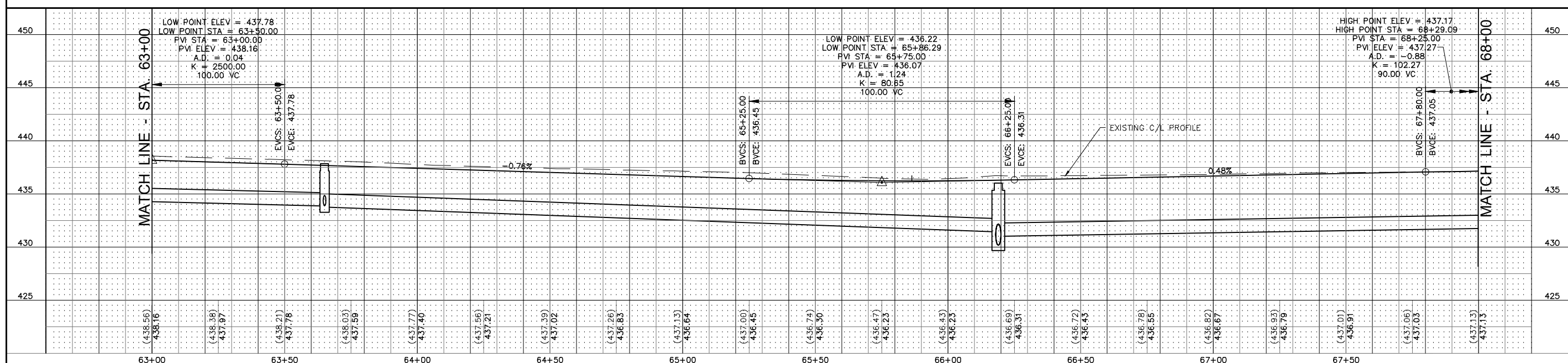
- ⑧ INLETS TB T3VF&G
STA. 63+65.00, 15.04' RT.
T.C. = 437.83
15" S. F.L. = 433.86
12" W. F.L. = 433.86
15" N. F.L. = 433.76
- ⑨ INLETS TA T3VF&G
STA. 63+65.00, 15.04' LT.
T.C. = 437.83
12" E. F.L. = 434.16
- ⑩ MAN TA 4 DIA TIF OL
STA. 66+18.91, 15.04' RT.
TOP = 436.01
15" S. F.L. = 431.41
24" E. F.L. = 430.16
24" W. F.L. = 430.16
15" N. F.L. = 431.01
- ⑪ MAN TA 4 DIA T3F&G
STA. 66+18.91, 38.50' RT.
T.C. = 436.10
4" NW. F.L. = 433.10
12" S. F.L. = 430.16
18" E. F.L. = 430.16
24" W. F.L. = 430.16
- ⑫ INLETS TA T3F&G
STA. 65+92.83, 38.50' RT.
T.C. = 436.04
4" SW. F.L. = 433.04
12" N. F.L. = 430.42
- ⑬ CONN TO EXIST SEWER
CONCRETE COLLAR
STA. 66+17.54, 88.48' RT.
24" E. F.L. = 430.18
- ⑭ INLETS TA T3F&G
STA. 65+92.83, 38.50' LT.
T.C. = 436.04
4" SE. F.L. = 433.04
12" N. F.L. = 430.42
- ⑮ MAN TA 4 DIA T3F&G
STA. 66+18.91, 38.50' LT.
T.C. = 436.10
4" NE. F.L. = 433.10
12" S. F.L. = 430.16
24" E. F.L. = 430.16
24" W. F.L. = 430.16
- ⑯ CONN TO EXIST SEWER
CONCRETE COLLAR
STA. 66+20.46, 88.48' LT.
24" W. F.L. = 430.16

STORM SEWERS

- ⑧ ⑨ TO ⑧ 30 FT. - STORM SEWERS, CL A, T1, 12" @ 1.00%
6 CU. YD. TRENCH BACKFILL
- ⑨ ⑧ TO ⑩ 254 FT. - STORM SEWERS, CL A, T2, 15" @ 0.93%
96 CU. YD. TRENCH BACKFILL
- ⑩ ⑭ TO ⑮ 26 FT. - STORM SEWERS, T2, WAT MN, 12" @ 1.00%
19 CU. YD. TRENCH BACKFILL
- ⑪ ⑮ TO ⑯ 50 FT. - STORM SEWERS, CL A, T2, 24" @ 0.00%
29 CU. YD. TRENCH BACKFILL
- ⑫ ⑩ TO ⑮ 54 FT. - STORM SEWERS, T2, WAT MN, 24" @ 0.00%
44 CU. YD. TRENCH BACKFILL
- ⑬ ⑪ TO ⑩ 23 FT. - STORM SEWERS, CL A, T2, 24" @ 0.00%
20 CU. YD. TRENCH BACKFILL
- ⑭ ⑫ TO ⑪ 26 FT. - STORM SEWERS, CL A, T2, 12" @ 1.00%
18 CU. YD. TRENCH BACKFILL
- ⑮ ⑬ TO ⑪ 50 FT. - STORM SEWERS, CL A, T2, 18" @ 0.04%
36 CU. YD. TRENCH BACKFILL
- ⑯ ⑯ TO ⑩ 282 FT. - STORM SEWERS, CL A, T2, 15" @ 0.75%
191 CU. YD. TRENCH BACKFILL

CONSTRUCTION NOTES

- ① BUS PADS SHALL BE A MINIMUM OF 5' WIDE. GRADES SHALL BE LESS THAN 2% IN ALL DIRECTIONS
- ② DEPRESS CURB IN 2'
- ③ EXPANSION JOINT PER DETAIL A HWY. STD. 606001



NO.	REVISIONS

SMS ENGINEERS
 Sheppard, Morgan & Schwab, Inc.
 CONSULTING ENGINEERS AND LAND SURVEYORS
 215 Market Street, Alton, IL 62002 618.462.9755 E-mail: mail@smsengineers.com
 DESIGN FIRM # 184-000992

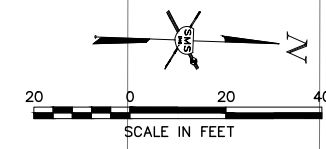
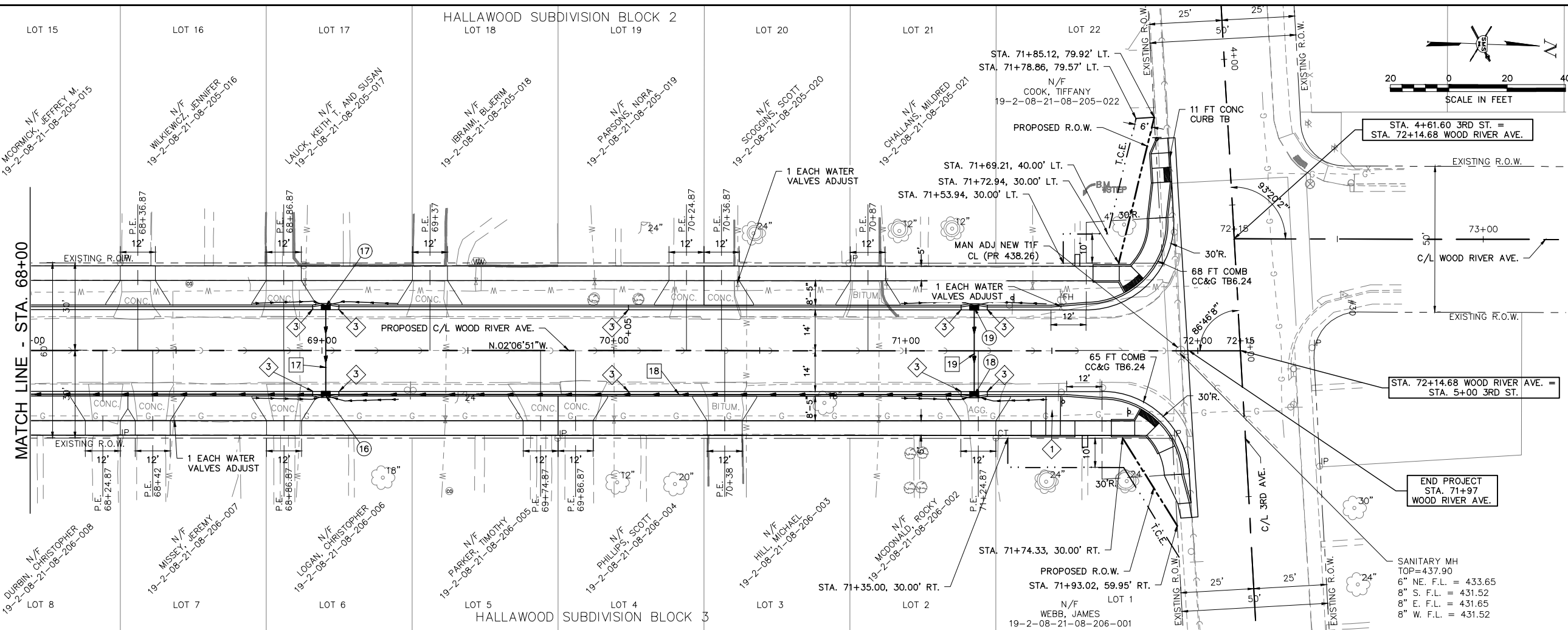
VILLAGE OF EAST ALTON, ILLINOIS
 SECTION 18-00052-00-PV / 19-00052-01-PV
 WOOD RIVER AVENUE
 PLAN AND PROFILE

CONTRACT NO. 97754

REF. BK.	PG.
JOB NO. 52008.1	
DSN. BY: DEG	
DWN. BY: CDP	
CHK. BY: DEG	
DATE: MARCH, 2021	

HORIZ: 1"=20'
 SCALE: VERT: 1"=5'

SHEET 10 OF 39



DRAINAGE STRUCTURES

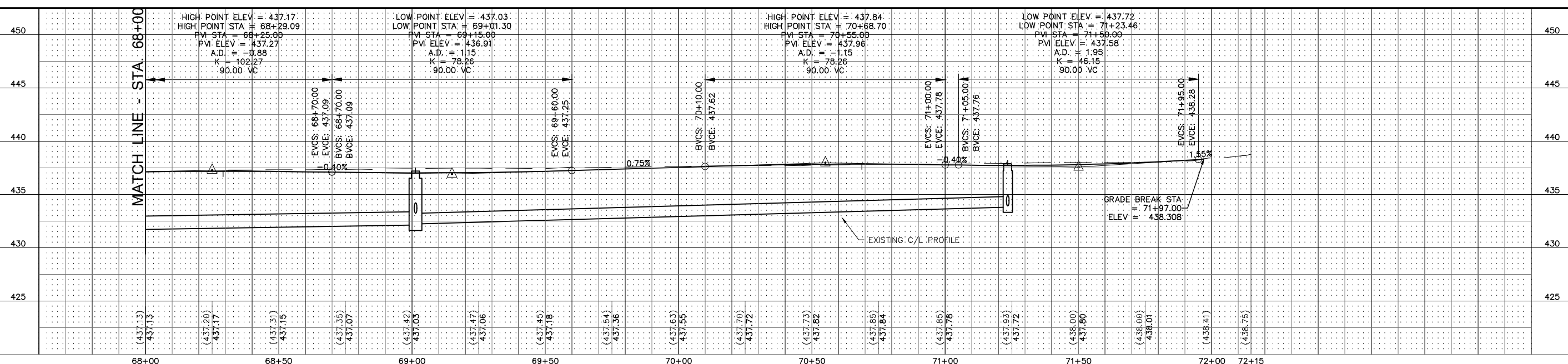
- 16 INLETS TB T3F&G
STA. 69+01.30, 15.04' RT.
T.C. = 437.19
4" SE. & NE. F.L. = 434.19
12" N. F.L. = 432.23
12" W. F.L. = 433.23
15" S. F.L. = 432.13
- 17 INLETS TA T3F&G
STA. 69+01.30, 15.04' LT.
T.C. = 437.19
4" SW. & NW. F.L. = 434.19
12" E. F.L. = 433.53
- 18 INLETS TB T23F&G
STA. 71+23.46, 15.04' RT.
T.C. = 437.51
4" SE. & NE. F.L. = 434.88
12" W. F.L. = 433.91
12" E. F.L. = 433.81
- 19 INLETS TA T3F&G
STA. 71+23.46, 15.04' LT.
T.C. = 437.88
4" SW. & NW. F.L. = 434.88
12" E. F.L. = 434.21

STORM SEWERS

- 17 TO 16 30 FT. - STORM SEWERS, CL A, T1, 12" @ 1.00%
8 CU. YD. TRENCH BACKFILL
- 18 TO 16 222 FT. - STORM SEWERS, CL A, T1, 12" @ 0.71%
67 CU. YD. TRENCH BACKFILL
- 19 TO 18 30 FT. - STORM SEWERS, CL A, T1, 12" @ 1.00%
7 CU. YD. TRENCH BACKFILL

CONSTRUCTION NOTES

- 1 BUS PADS SHALL BE A MINIMUM OF 5' WIDE. GRADES SHALL BE LESS THAN 2% IN ALL DIRECTIONS
- 2 DEPRESS CURB IN 2'
- 3 EXPANSION JOINT PER DETAIL A HWY. STD. 606001



REVISIONS

SMS ENGINEERS
Sheppard, Morgan & Schwab, Inc.
CONSULTING ENGINEERS AND LAND SURVEYORS
215 Market Street, Alton, IL 62002 618.462.9755 E-mail: mail@smsengineers.com
DESIGN FIRM # 184-000992

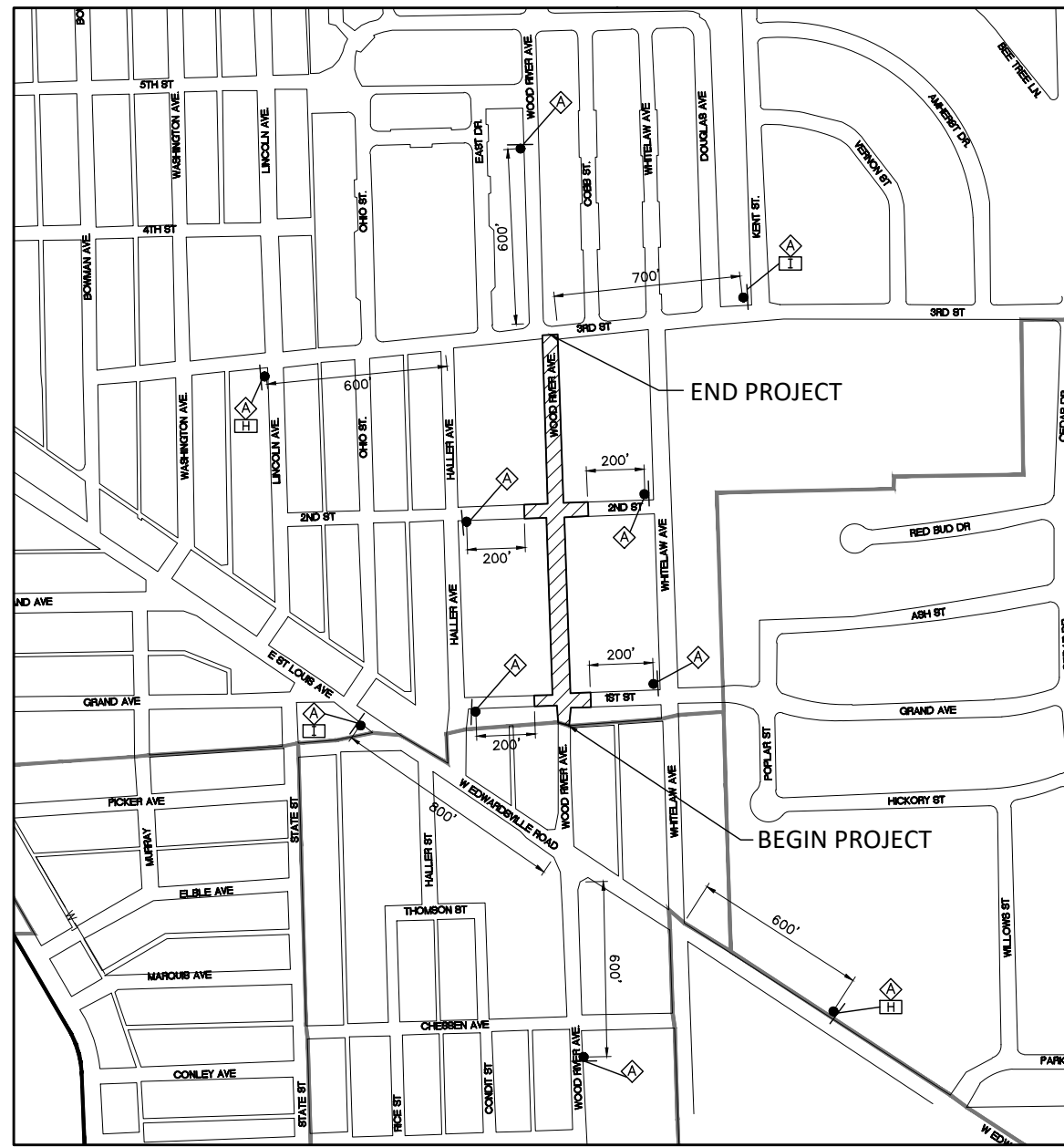
VILLAGE OF EAST ALTON, ILLINOIS
SECTION 18-00052-00-PV / 19-00052-01-PV
WOOD RIVER AVENUE
PLAN AND PROFILE

CONTRACT NO. 97754

REF. BK.	PG.
JOB NO. 52008.1	
DSN. BY: DEG	
DWN. BY: CDP	
CHK. BY: DEG	
DATE: MARCH, 2021	

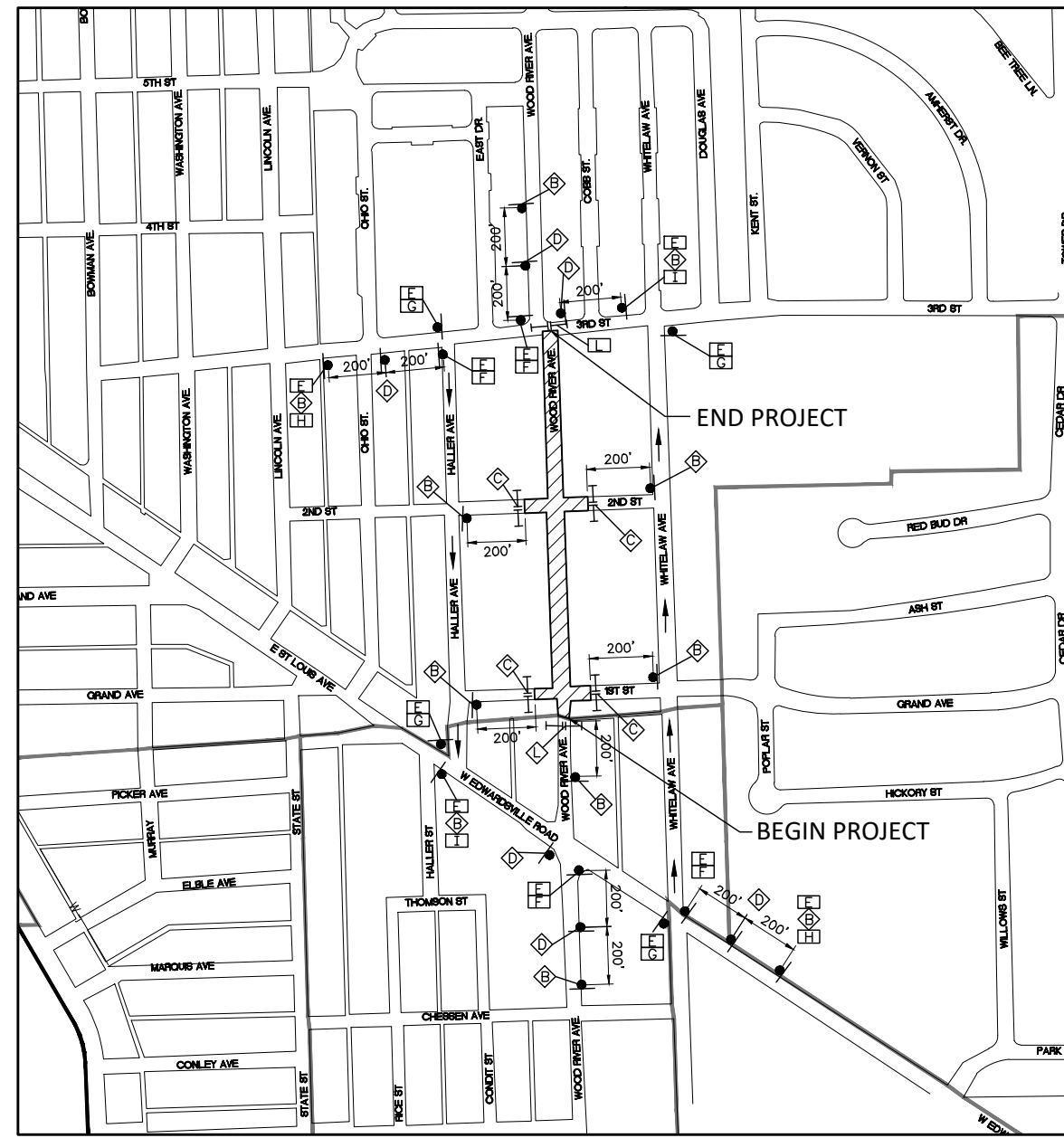
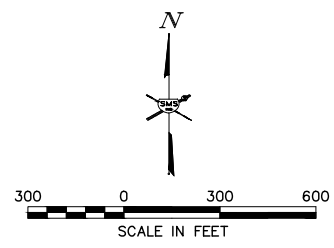
HORIZ: 1"=20'
SCALE: VERT: 1"=5'

SHEET 11 OF 39



GENERAL TRAFFIC CONTROL PLAN

SCALE: 1"=300'



TRAFFIC DETOUR PLAN

SCALE: 1"=300'

TRAFFIC CONTROL LEGEND

- WORK AREA
- TYPE III BARRICADE WITH REFLECTORIZED STRIPING ON BOTH SIDES WITH FLASHING LIGHTS
- CONE, DRUM OR BARRICADE
- SIGN "ROAD CONSTRUCTION AHEAD" W20-1(0) - 48" x 48" WITH MONODIRECTIONAL FLASHING LIGHT
- SIGN "ROAD CLOSED AHEAD" W20-3 48" x 48"
- SIGN "ROAD CLOSED" R11-2 48" x 30"
- SIGN "DETOUR AHEAD" W20-2 48" x 48"
- SIGN "WOOD RIVER AVE." BLACK LETTER ON ORANGE BACKGROUND
- SIGN M4-9R 30" x 24"
- SIGN M4-9R 30" x 24"
- SIGN BLACK ARROW ON ORANGE BACKGROUND 24" x 18"
- SIGN BLACK ARROW ON ORANGE BACKGROUND 24" x 18"
- SIGN M4-8 24" x 12"
- SIGN BLACK ARROW ON ORANGE BACKGROUND 18" x 18"
- SIGN "ROAD CLOSED TO THRU TRAFFIC" R11-2 48" x 30"

TRAFFIC CONTROL NOTES

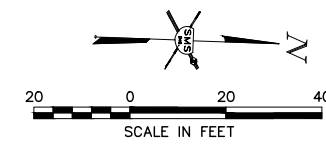
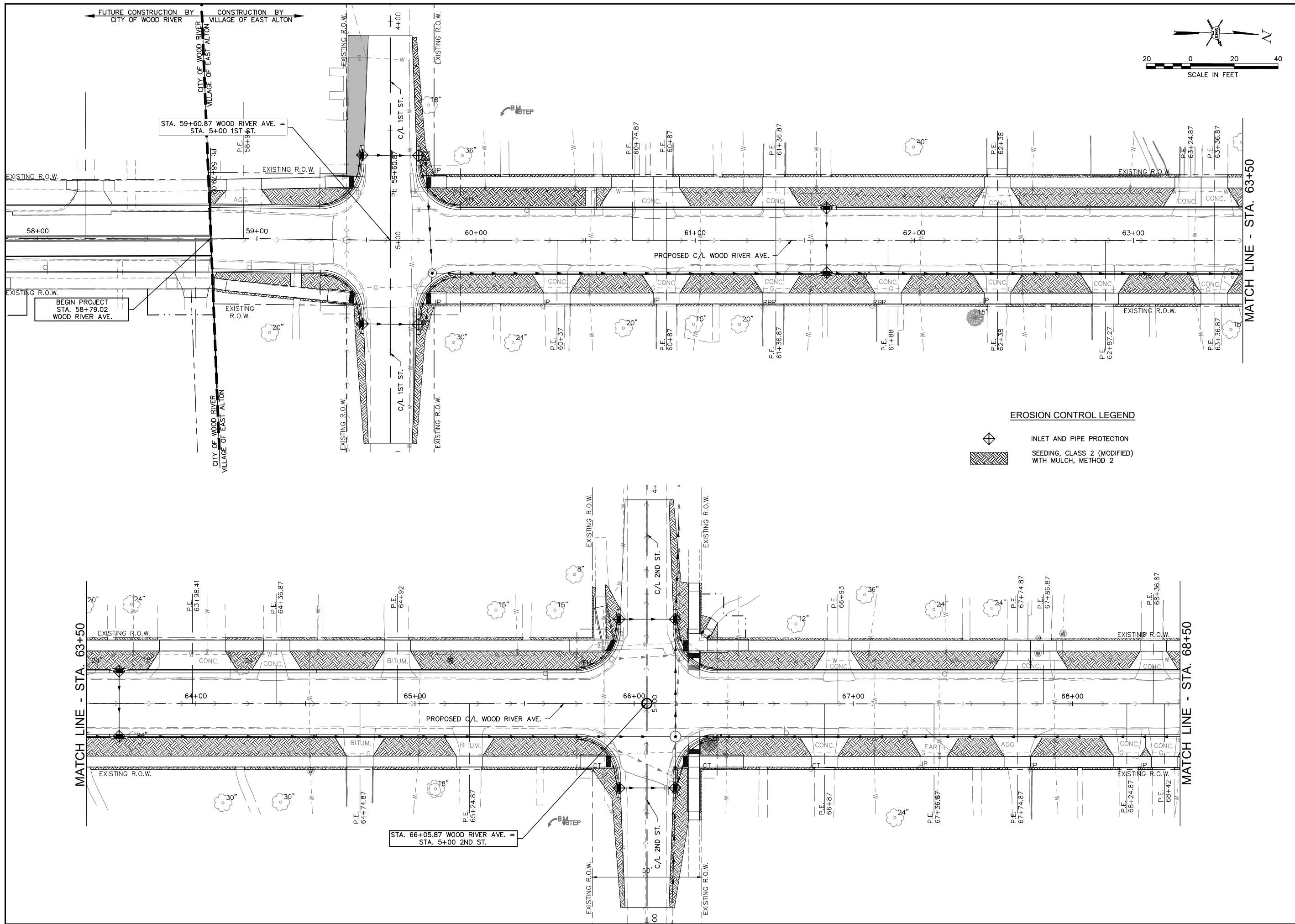
1. THE CONTRACTOR SHALL PROVIDE THE TRAFFIC CONTROL SHOWN ON THE GENERAL TRAFFIC CONTROL PLAN AT ALL TIMES DURING THE CONSTRUCTION OF THIS PROJECT. ADDITIONAL TRAFFIC CONTROL SHALL BE PROVIDED AS SPECIFIED BELOW AND IN ACCORDANCE WITH THE SPECIFIED HIGHWAY STANDARDS.
2. WOOD RIVER AVENUE SHALL REMAIN CLOSED TO THROUGH TRAFFIC FOR THE MAJORITY OF CONSTRUCTION. AT TIMES WHEN WOOD RIVER AVENUE IS OPEN TO TRAFFIC, PROVIDE TRAFFIC CONTROL AS NEEDED PER HIGHWAY STANDARD 701006, 701011, 701301 OR 701501.
3. WHEN WOOD RIVER AVENUE IS CLOSED TO THRU TRAFFIC, LOCAL TRAFFIC SHALL MAINTAIN ACCESS TO THEIR PROPERTIES DURING MOST OF THE CONSTRUCTION. THE CONTRACTOR SHALL NOTIFY ALL RESIDENTS 48 HOURS IN ADVANCE WHEN ACCESS TO THEIR PROPERTIES WILL BE LIMITED.
4. FOR SIDEWALK REMOVAL AND REPLACEMENT, TRAFFIC CONTROL FOR SIDEWALK CLOSURES SHALL BE PROVIDED PER HIGHWAY STANDARD 701801. SIDEWALK REMOVAL AND REPLACEMENT SHALL BE SEQUENCED AS MUCH AS POSSIBLE TO ALWAYS ALLOW AN ACCESSIBLE ROUTE TO PRIVATE PROPERTY AND BUSINESSES.
5. WHERE A HIGHWAY STANDARD REQUIRES A "ROAD CONSTRUCTION AHEAD" SIGN, THIS REQUIREMENT WILL BE CONSIDERED FULFILLED BY THE SIGNS REQUIRED ON THE GENERAL TRAFFIC CONTROL PLAN.
6. ALL HAZARDS WITHIN WORK ZONES SHALL BE PROTECTED WITH TYPE I BARRICADES OR DRUMS WITH FLASHING LIGHTS.
7. ALL CONSTRUCTION SIGNS SHALL MEET THE REQUIREMENTS OF THE LATEST EDITION OF THE "MANUAL ON UNIFORM TRAFFIC CONTROL DEVICES FOR STREETS AND HIGHWAYS".
8. IF THE CONTRACTOR WISHES TO DEVIATE FROM THIS TRAFFIC CONTROL PLAN, HE SHALL PROVIDE A REVISED TRAFFIC CONTROL PLAN IN WRITING FOR THE REVIEW AND APPROVAL OF THE ENGINEER.

REVISIONS

SMS Sheppard, Morgan & Schwaab, Inc.
 CONSULTING ENGINEERS AND LAND SURVEYORS
 ENGINEERS DESIGN FIRM # 184-000992
215 Market Street, Alton, IL 62002 618/462-9755 E-mail: mail@smsengineers.com

VILLAGE OF EAST ALTON, ILLINOIS
 SECTION 18-00052-00-PV / 19-00052-01-PV
 WOOD RIVER AVENUE
 TRAFFIC CONTROL PLAN AND DETOUR PLAN

CONTRACT NO.	97754
REF. BK.	PG.
JOB NO.	52008.1
DSN. BY:	DEG
DWN. BY:	CDP
CHK. BY:	DEG
DATE:	MARCH, 2021
SCALE:	
SHEET	12 OF 39

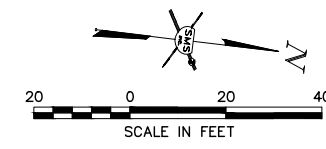
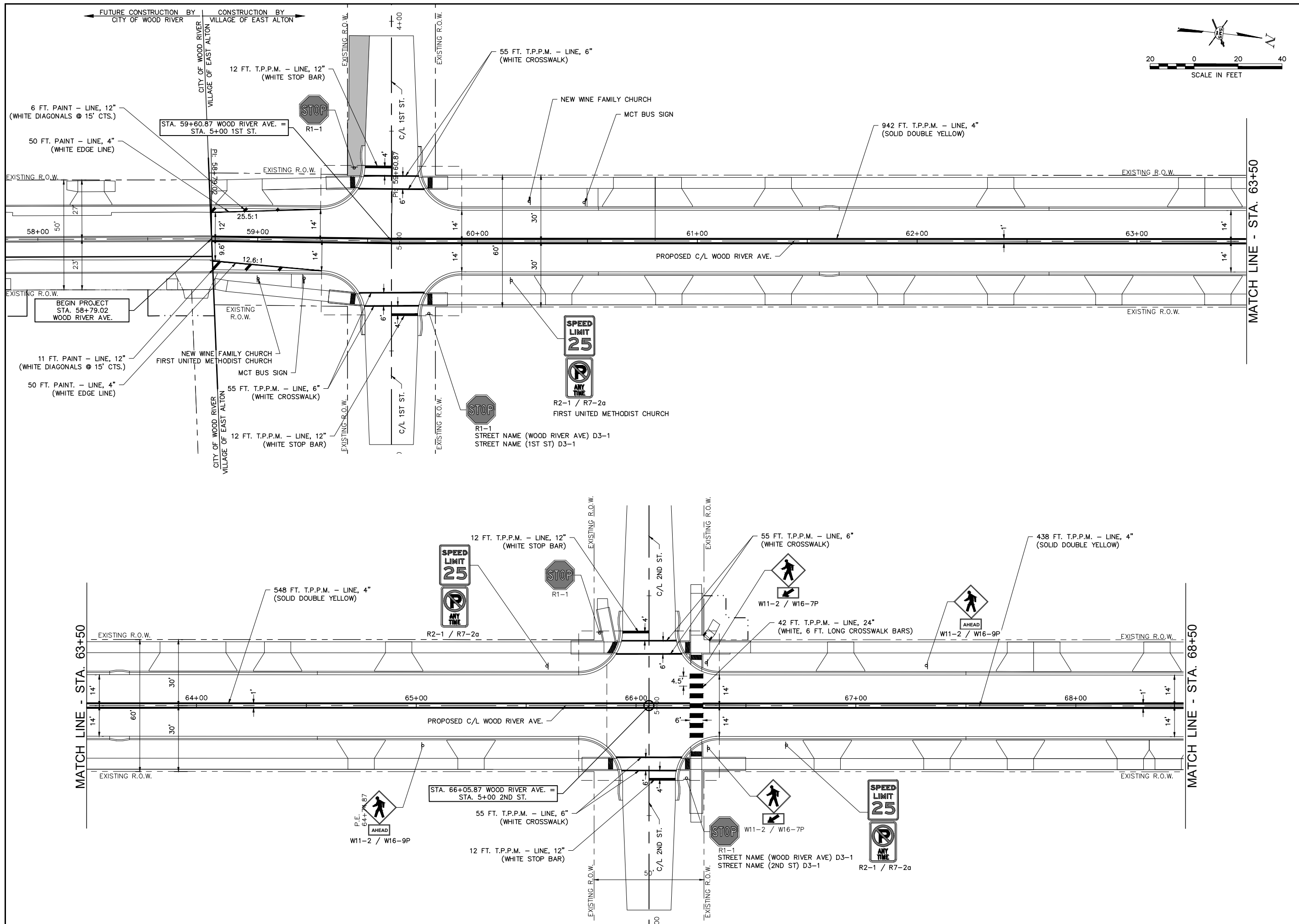


NO.	DATE	DESCRIPTION

SMS ENGINEERS
 Sheppard, Morgan & Schwaab, Inc.
 CONSULTING ENGINEERS AND LAND SURVEYORS
 215 Market Street, Alton, IL 62002 618.462.9755 E-mail: mail@smsengineers.com
 DESIGN FIRM # 184-000992

VILLAGE OF EAST ALTON, ILLINOIS
 SECTION 18-00052-00-PV / 19-00052-01-PV
 WOOD RIVER AVENUE
 EROSION CONTROL PLAN

CONTRACT NO.	97754
REF. BK.	PG.
JOB NO.	52008.1
DSN. BY:	DEG
DWN. BY:	CDP
CHK. BY:	DEG
DATE:	MARCH, 2021
SCALE:	1" = 20'
SHEET	13 OF 39



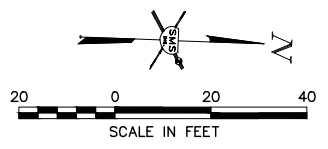
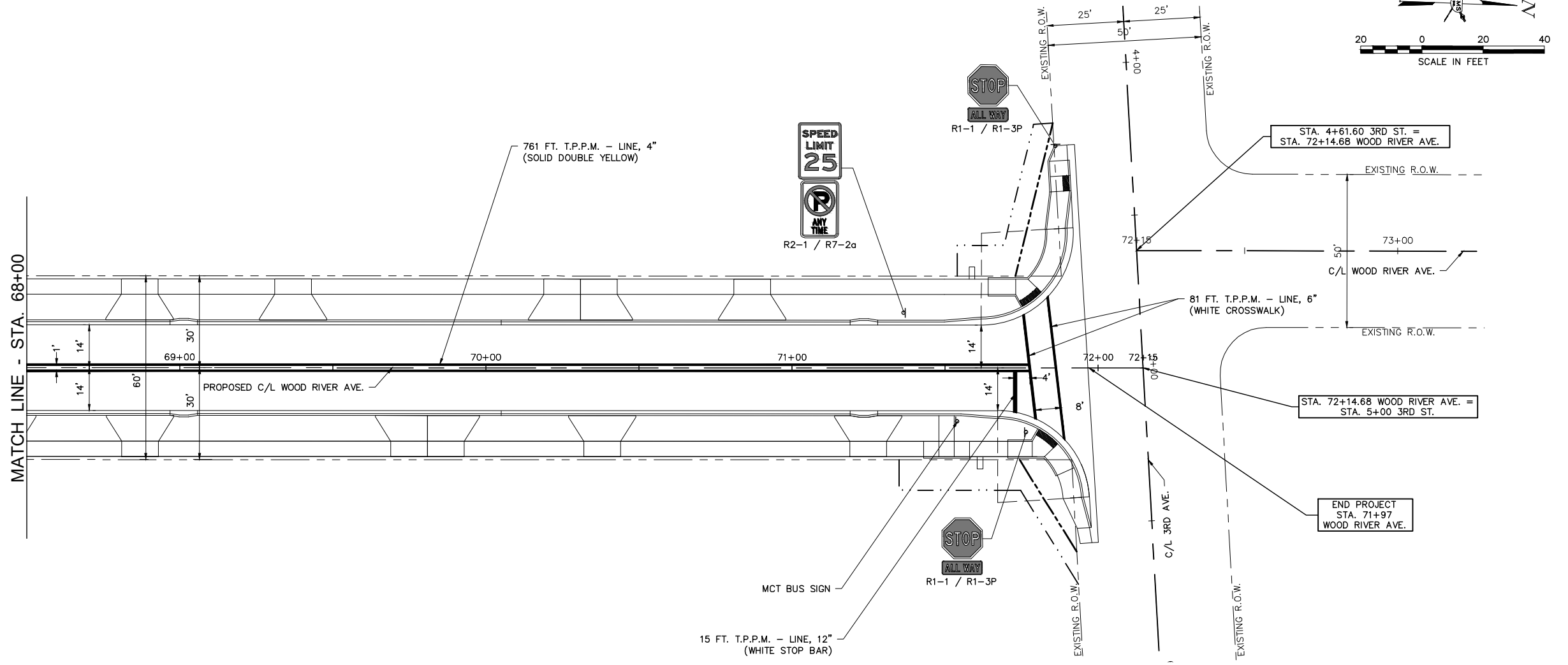
NO.	DATE	DESCRIPTION

SMS ENGINEERS
 Sheppard, Morgan & Schwaab, Inc.
 CONSULTING ENGINEERS AND LAND SURVEYORS
 215 Market Street, Alton, IL 62002 618.462.9755 E-mail: mail@smsengineers.com
 DESIGN FIRM # 184-000992

VILLAGE OF EAST ALTON, ILLINOIS
 SECTION 18-00052-00-PV / 19-00052-01-PV
 WOOD RIVER AVENUE
 PAVEMENT MARKING & SIGNING

CONTRACT NO.	97754
REF. BK.	PG.
JOB NO.	52008.1
DSN. BY:	DEG
DWN. BY:	CDP
CHK. BY:	DEG
DATE:	MARCH, 2021
SCALE:	1"=20'
SHEET	15 OF 39

MATCH LINE - STA. 68+00



NO.	DATE	REVISIONS

SMS ENGINEERS
 Sheppard, Morgan & Schwab, Inc.
 CONSULTING ENGINEERS AND LAND SURVEYORS
 215 Market Street, Alton, IL 62002 618.462.9755 E-mail: mail@smsengineers.com
 DESIGN FIRM # 184-000992

VILLAGE OF EAST ALTON, ILLINOIS
 SECTION 18-00052-00-PV / 19-00052-01-PV
 WOOD RIVER AVENUE
 PAVEMENT MARKING & SIGNING

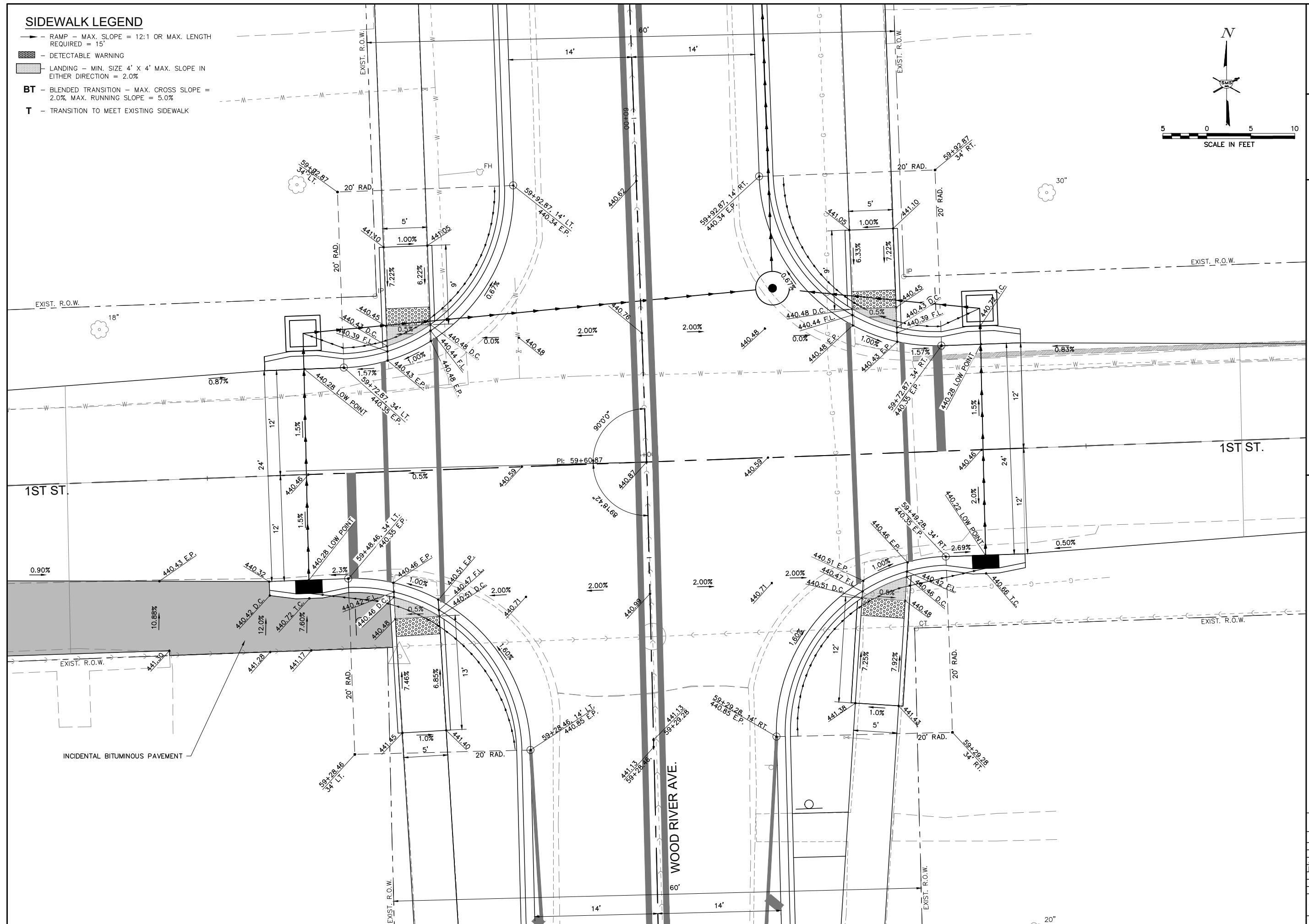
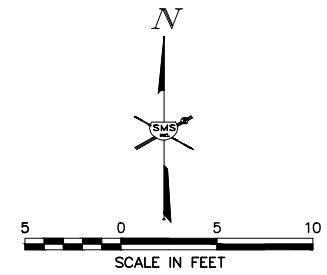
CONTRACT NO.
 97754

REF. BK.	PG.
JOB NO. 52008.1	
DSN. BY: DEG	
DWN. BY: CDP	
CHK. BY: DEG	
DATE: MARCH, 2021	

SCALE: 1"=20'

SIDEWALK LEGEND

- RAMP - MAX. SLOPE = 12:1 OR MAX. LENGTH REQUIRED = 15'
- ▨ DETECTABLE WARNING
- ▩ LANDING - MIN. SIZE 4' X 4' MAX. SLOPE IN EITHER DIRECTION = 2.0%
- BT** - BLENDED TRANSITION - MAX. CROSS SLOPE = 2.0%, MAX. RUNNING SLOPE = 5.0%
- T** - TRANSITION TO MEET EXISTING SIDEWALK



REVISIONS

SMS Sheppard, Morgan & Schwaab, Inc.
 CONSULTING ENGINEERS AND LAND SURVEYORS
 215 Market Street, Alton, IL 62002 618-462-9755 E-mail: mail@smsengineers.com
ENGINEERS DESIGN FIRM # 184-000992

VILLAGE OF EAST ALTON, ILLINOIS
 SECTION 18-00052-00-PV / 19-00052-01-PV
 WOOD RIVER AVENUE
 CONSTRUCTION DETAILS

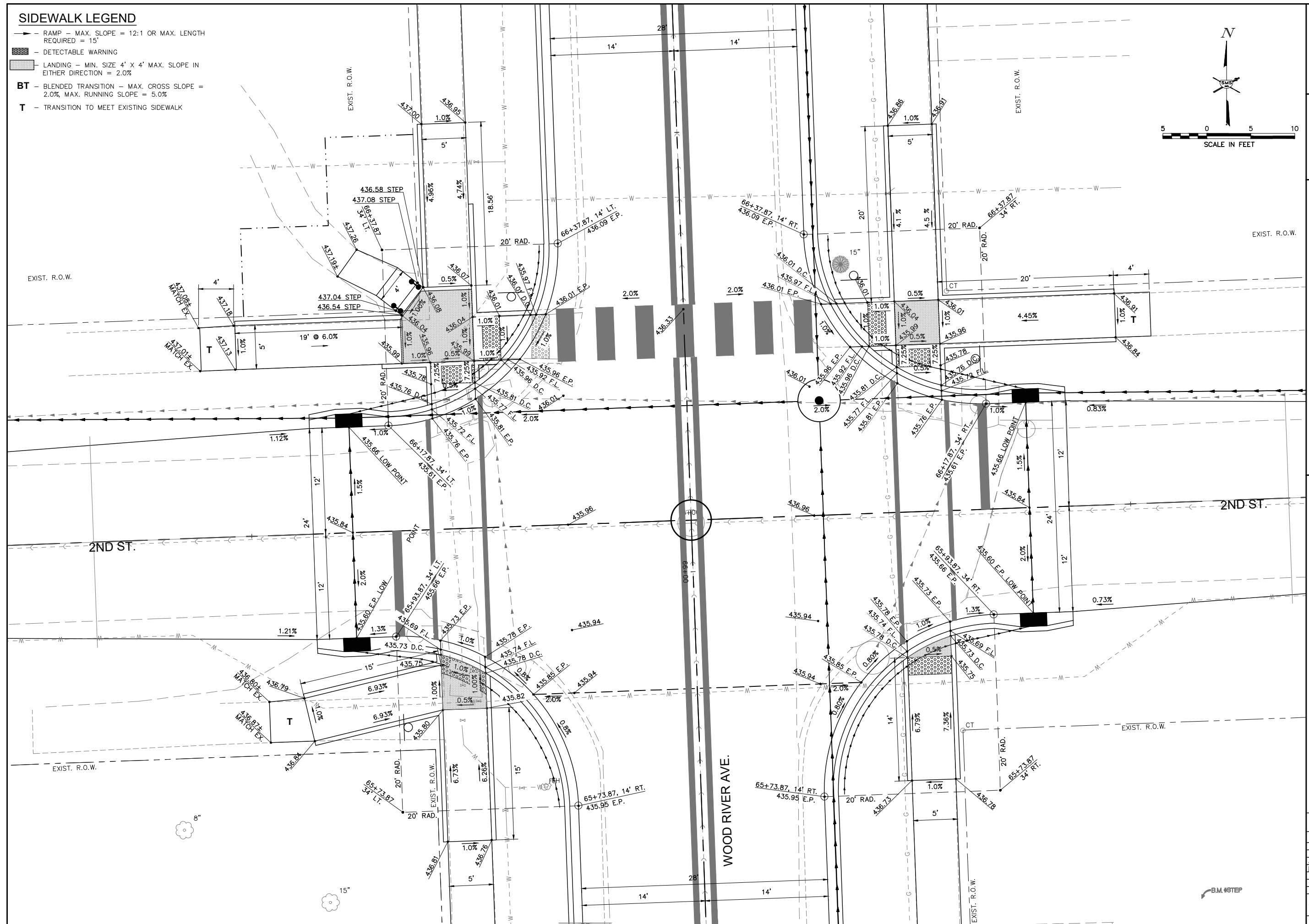
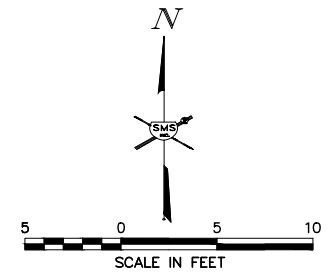
CONTRACT NO.
 97754

REF. BK.	PG.
JOB NO. 52008.1	
DSN. BY: DEG	
DWN. BY: CDP	
CHK. BY: DEG	
DATE: MARCH, 2021	

SCALE: 1" = 5'
 SHEET 17 OF 39

SIDEWALK LEGEND

- RAMP - MAX. SLOPE = 12:1 OR MAX. LENGTH REQUIRED = 15'
- ▨ DETECTABLE WARNING
- ▭ LANDING - MIN. SIZE 4' X 4' MAX. SLOPE IN EITHER DIRECTION = 2.0%
- BT - BLENDED TRANSITION - MAX. CROSS SLOPE = 2.0%, MAX. RUNNING SLOPE = 5.0%
- T - TRANSITION TO MEET EXISTING SIDEWALK



NO.	DESCRIPTION

SMS
ENGINEERS

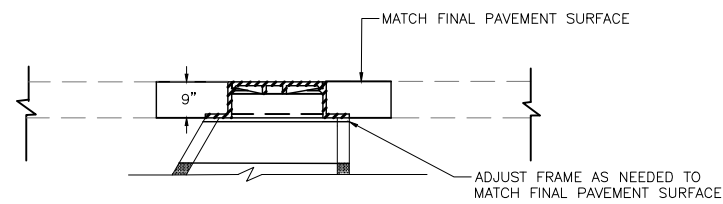
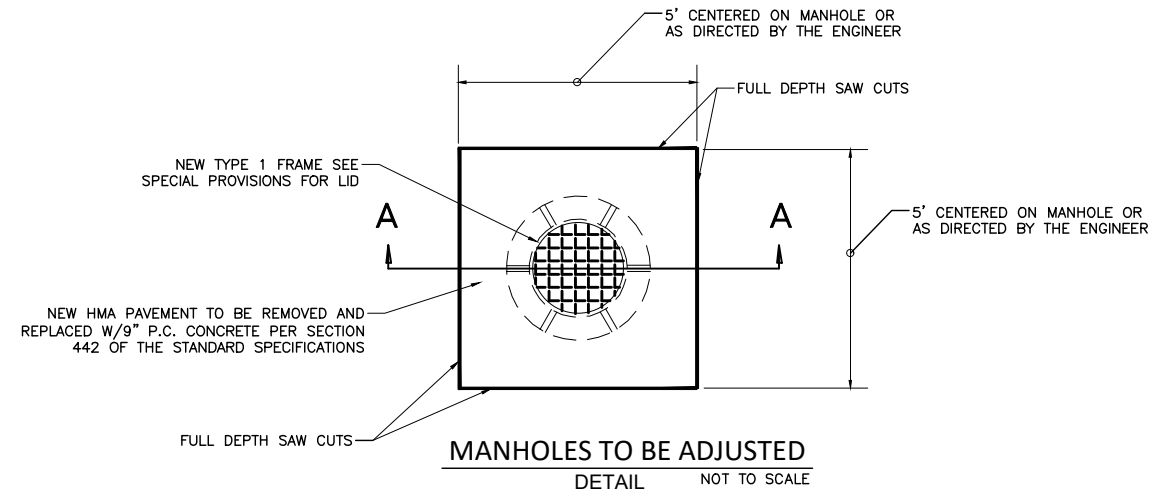
Sheppard, Morgan & Schwab, Inc.
CONSULTING ENGINEERS AND LAND SURVEYORS
215 Market Street, Alton, IL 62002 618-462-9755 E-mail: mail@smsengineers.com
DESIGN FIRM # 184-000992

VILLAGE OF EAST ALTON, ILLINOIS
SECTION 18-00052-00-PV / 19-00052-01-PV
WOOD RIVER AVENUE
CONSTRUCTION DETAILS

CONTRACT NO.
97754

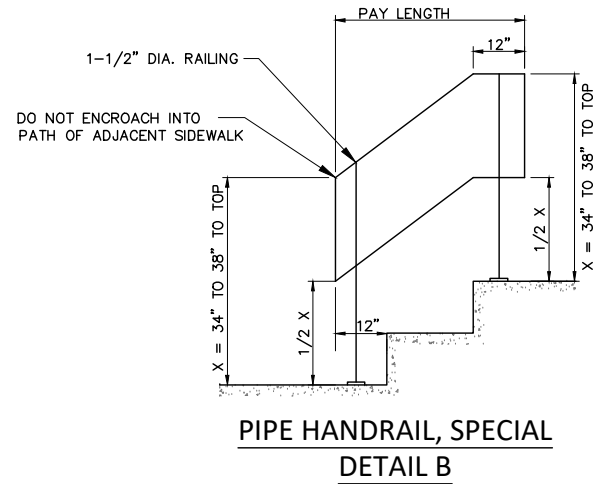
REF. BK.	PG.
JOB NO. 52008.1	
DSN. BY: DEG	
DWN. BY: CDP	
CHK. BY: DEG	
DATE: MARCH, 2021	

SCALE: 1" = 5'
SHEET 18 OF 39

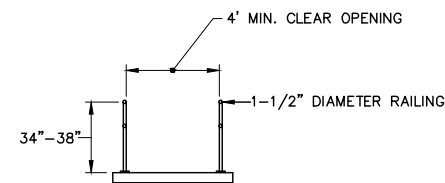


NOTE: MANHOLES SHALL BE ADJUSTED AFTER THE HMA SURFACE REMOVAL WORK AND PRIOR TO THE FINAL HMA SURFACE CONSTRUCTION

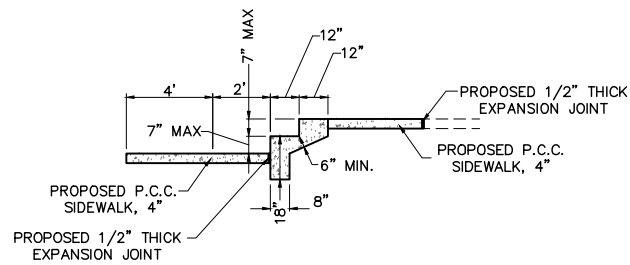
SECTION A - A
NOT TO SCALE



PIPE HANDRAIL, SPECIAL
DETAIL B



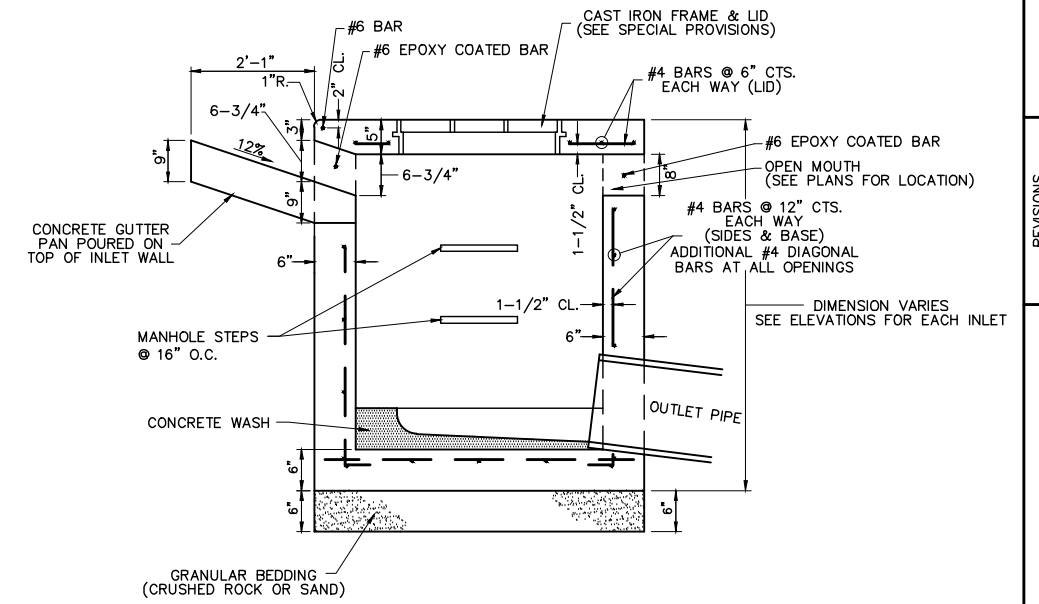
PIPE HANDRAIL, SPECIAL
DETAIL C



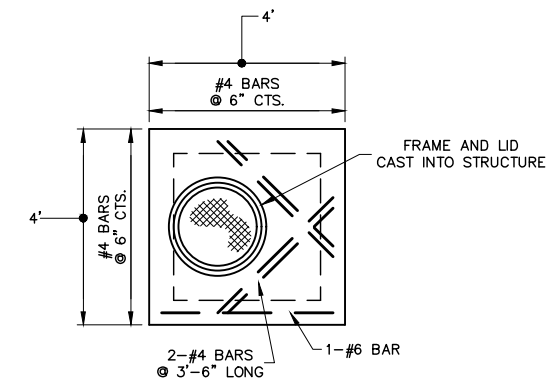
NOTES:

1. USE AS MANY STAIR TREADS AS NEEDED TO MATCH EXISTING CONDITIONS.
2. ALL RISERS MUST BE THE SAME HEIGHT.
3. SIDEWALKS SHALL BE CONSTRUCTED ON A GRADE OF 5% OR LESS TO AVOID THE USE OF STEPS WHERE POSSIBLE.
4. LOCATIONS WITH ONLY ONE STEP MAY BE POURED MONOLITHIC WITH UPPER SIDEWALK.

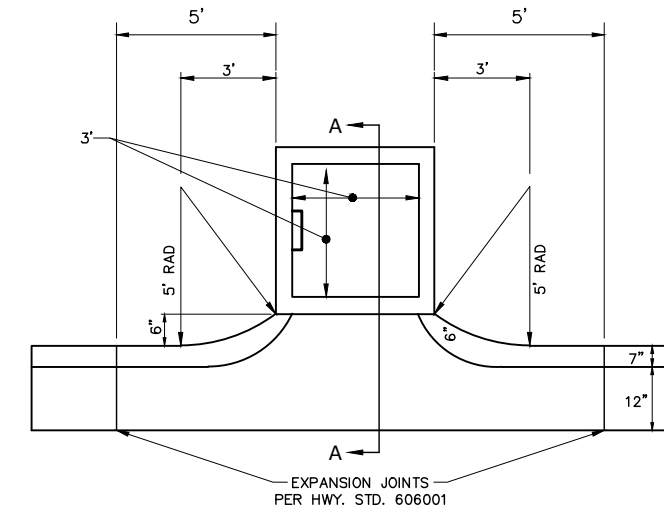
DETAIL A
CONCRETE STEPS



SECTION A-A
NO SCALE



CONCRETE LID
NO SCALE



INLETS, SPECIAL
NO SCALE

REVISIONS

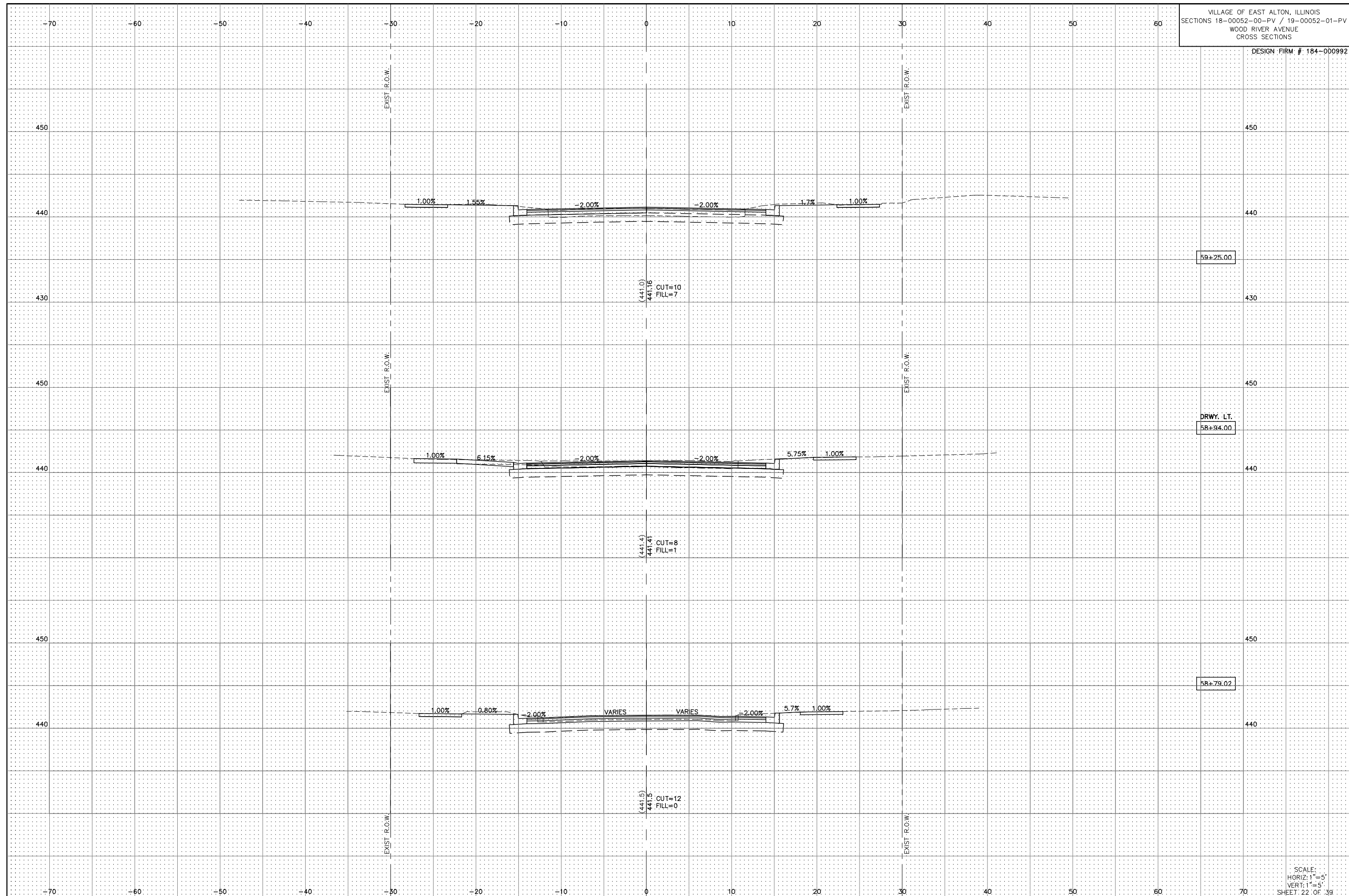
SMS ENGINEERS
Sheppard, Morgan & Schwab, Inc.
CONSULTING ENGINEERS AND LAND SURVEYORS
215 Market Street, Alton, IL 62002 618/462-9755 E-mail: mail@smsengineers.com
DESIGN FIRM # 184-000992

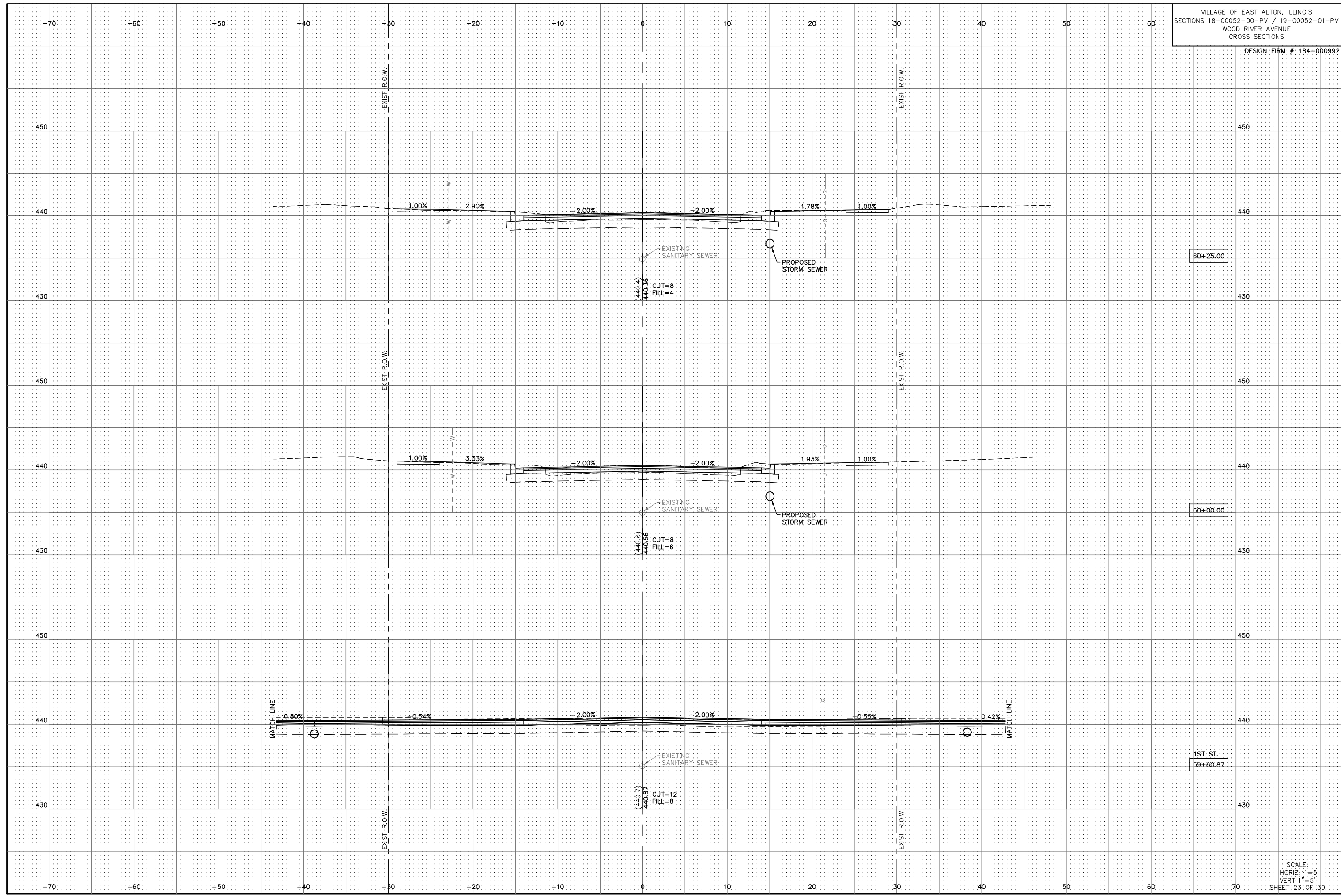
VILLAGE OF EAST ALTON, ILLINOIS
SECTION 18-00052-00-PV / 19-00052-01-PV
WOOD RIVER AVENUE
MISCELLANEOUS DETAILS

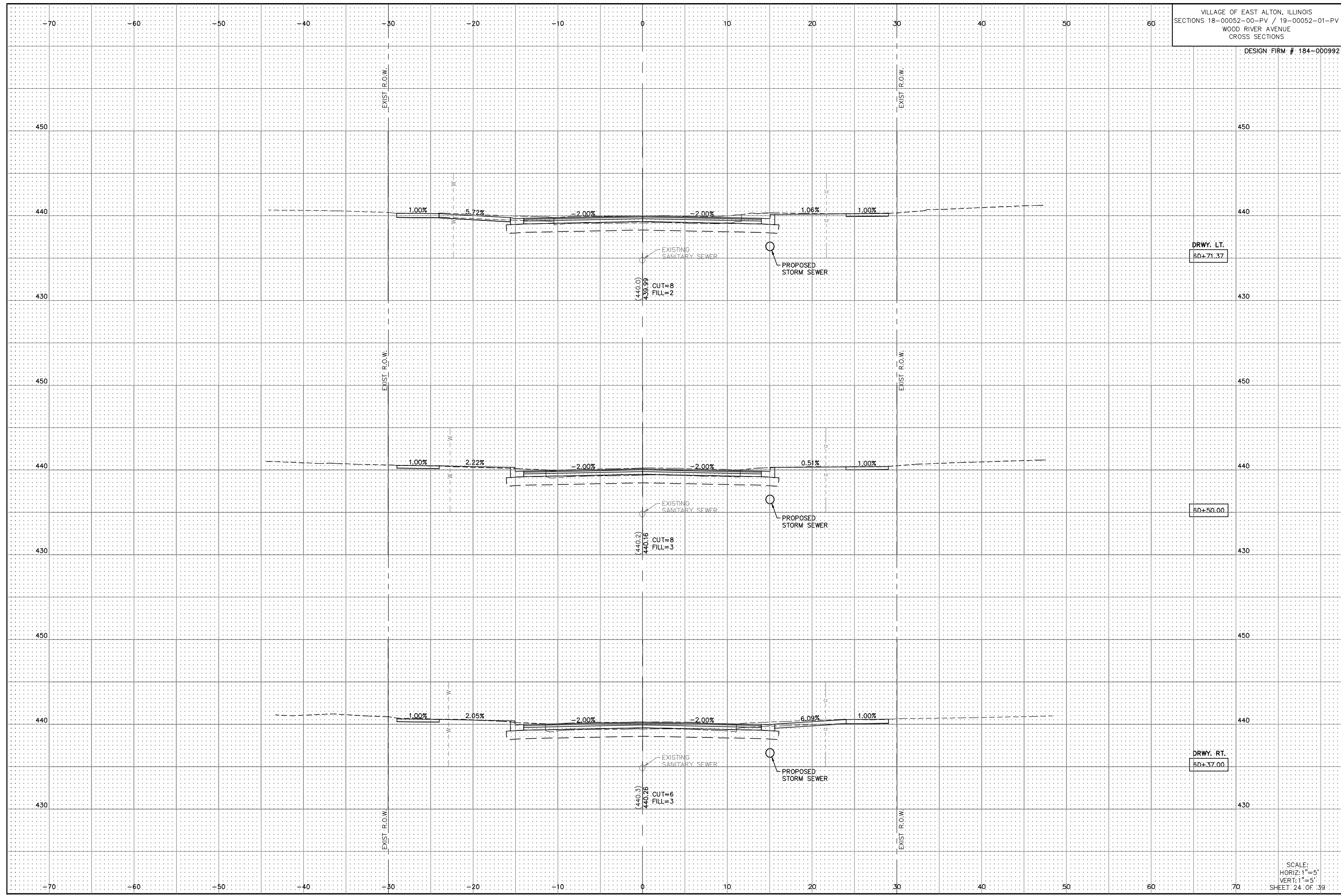
CONTRACT NO.
97754

REF. BK.	PG.
JOB NO. 52008.1	
DSN. BY: DEG	
DWN. BY: CDP	
CHK. BY: DEG	
DATE: MARCH, 2021	

SCALE: NONE



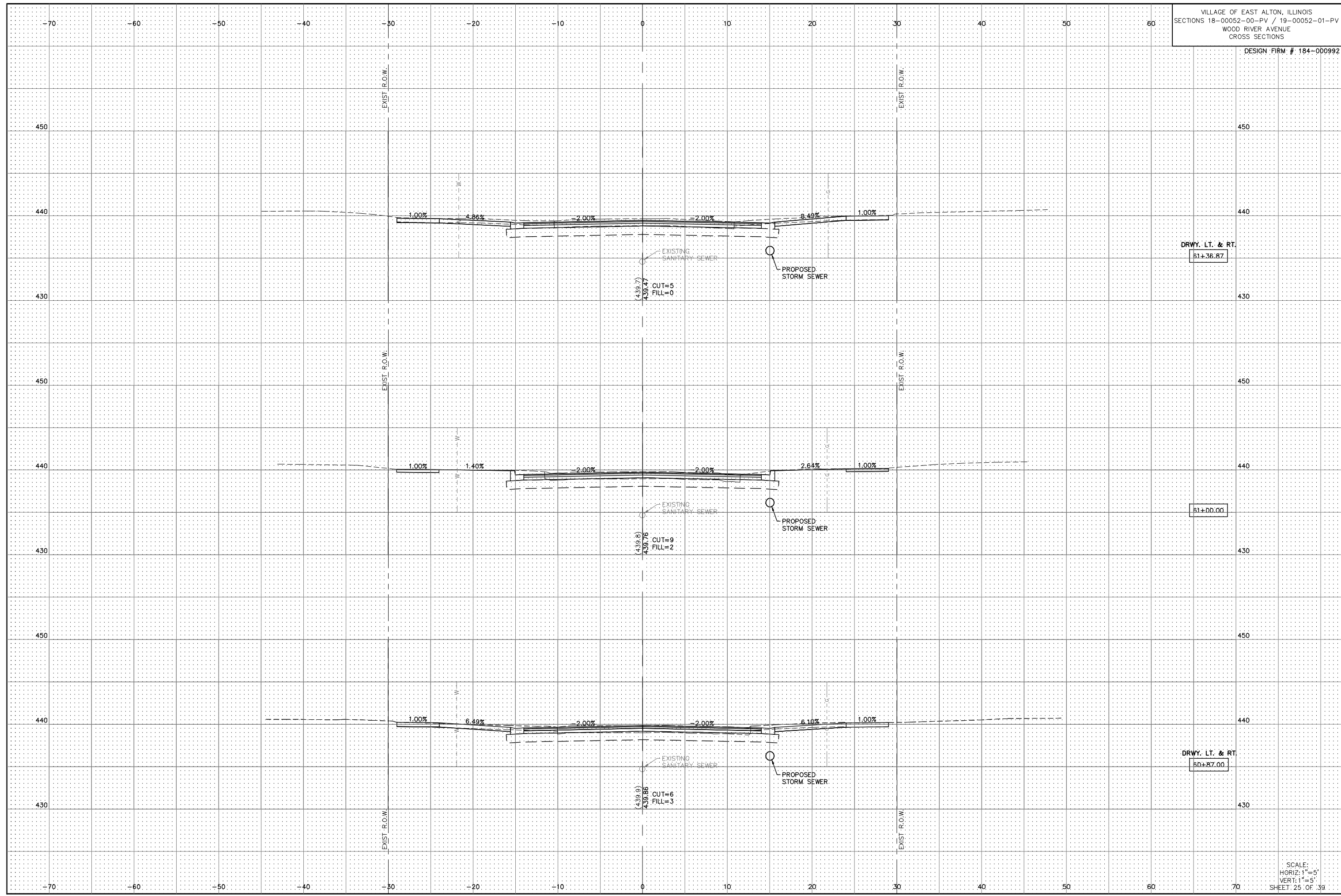


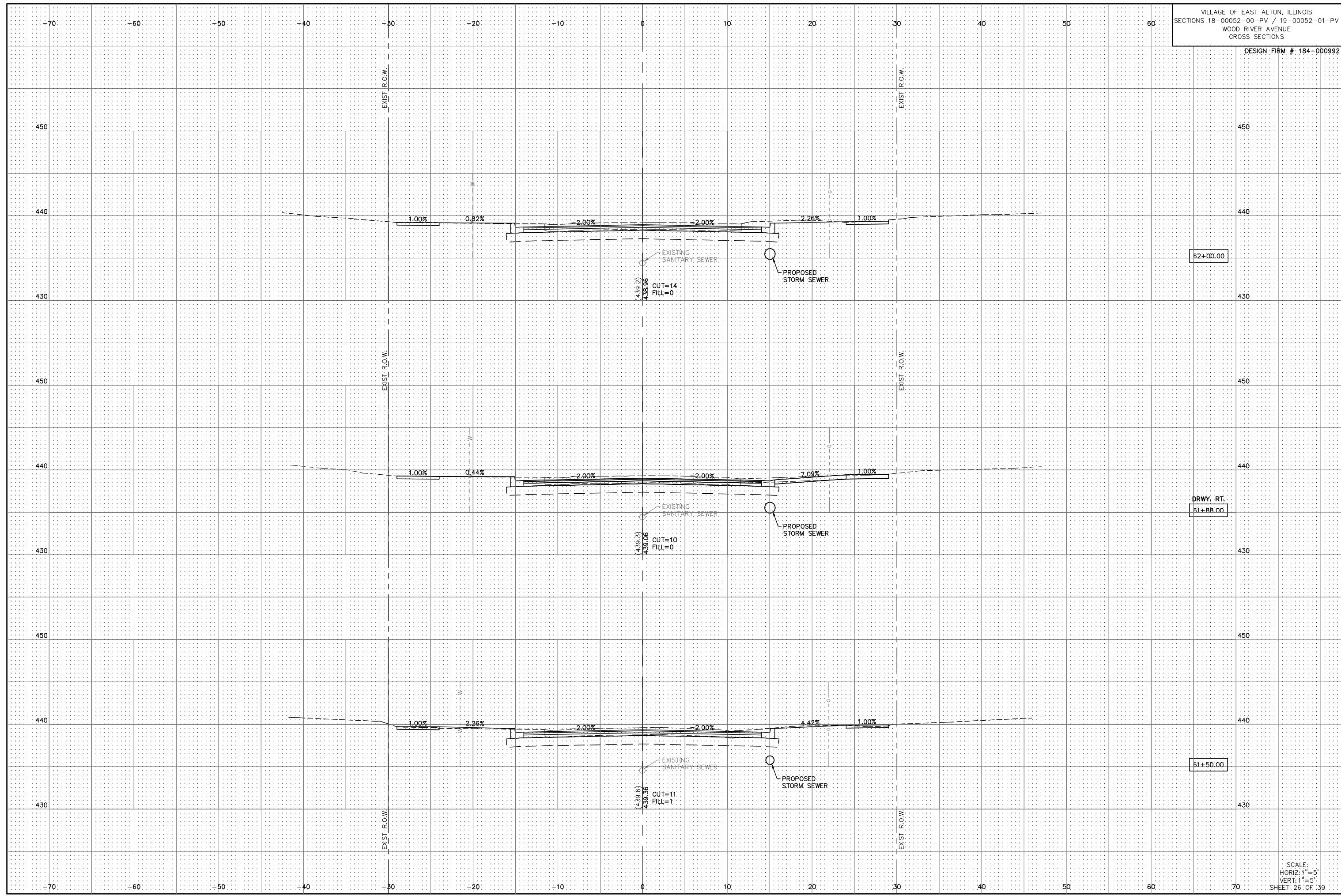


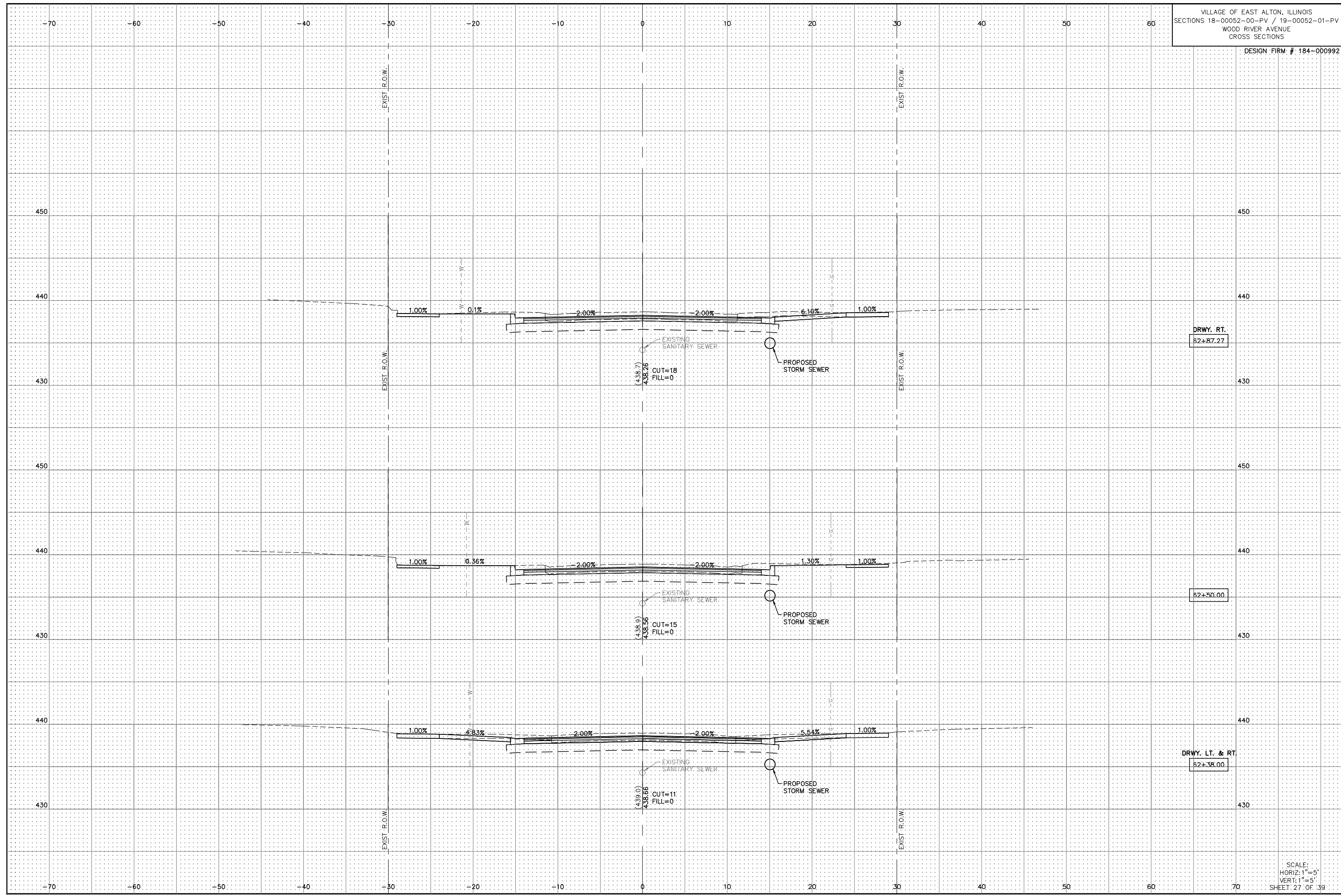
DRWY. LT.
50+71.37

50+50.00

DRWY. RT.
50+37.00







DRWY. RT.
52+87.27

52+50.00

DRWY. LT. & RT.
52+38.00

