

ROAD CLASSIFICATION: MAJOR COLLECTOR
DESIGN SPEED 50 M.P.H.

ADT:
(2020) = 1350
(2040) = 1890
PC = 1663
SU = 132
MU = 95
DHV₂₀ = 189

ROUTE	SECTION	COUNTY	SHEET NO.
FAS 1887	07-00163-00-RS	FRANKLIN	1 OF 7
			CONTRACT 99664

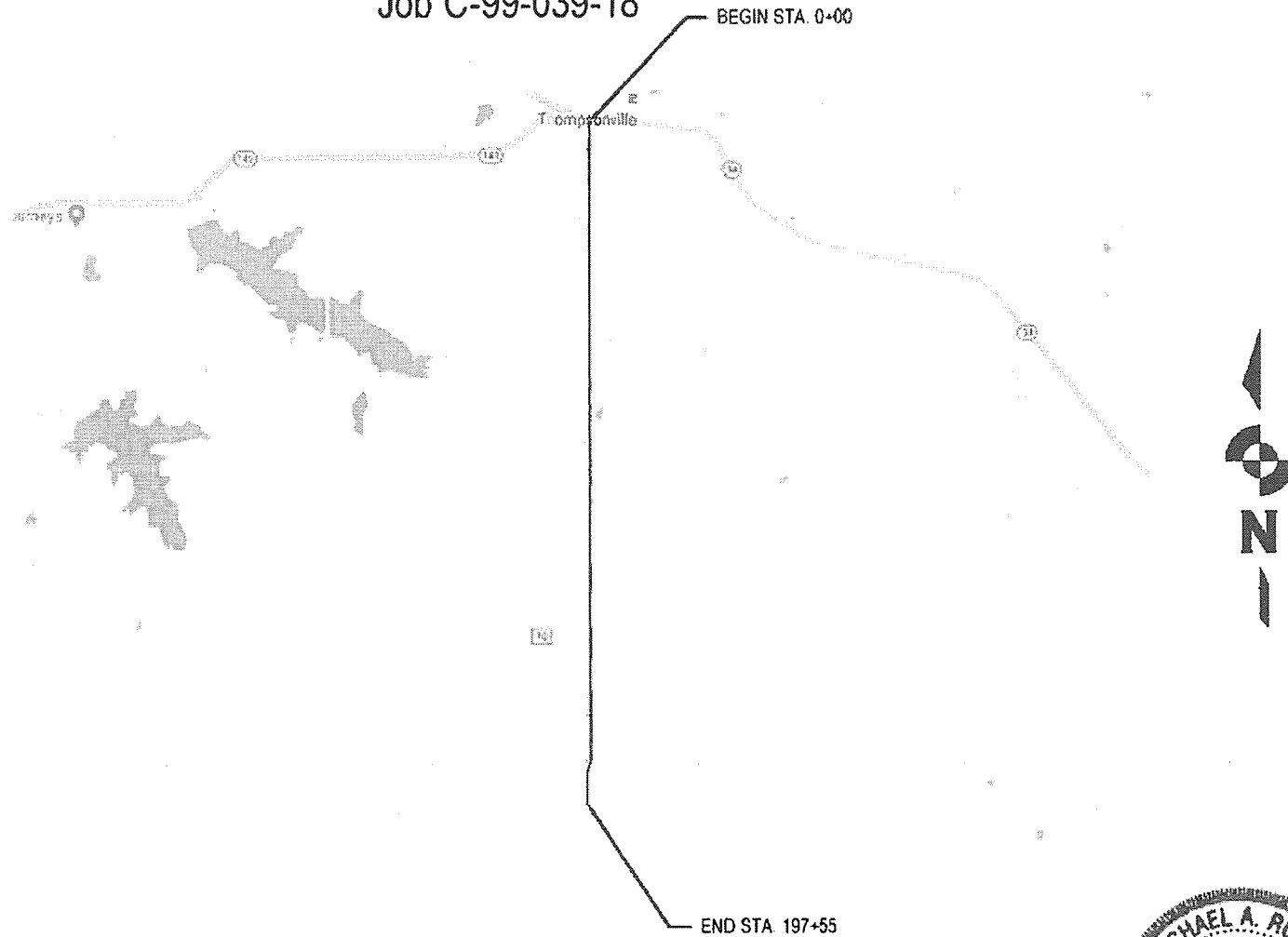
STATE OF ILLINOIS
DEPARTMENT OF TRANSPORTATION
DIVISION OF HIGHWAYS

PLANS FOR PROPOSED ROADWAY IMPROVEMENTS

FAS 1887 SOUTH THOMPSONVILLE ROAD
Franklin County, Illinois
Section 07-00163-00-RS
Project LIS9(889)
Job C-99-039-18



SHEET NO.	TITLE
1	COVER SHEET AND SUMMARY OF QUANTITIES
2	MISCELLANEOUS DETAILS AND TYPICAL SECTIONS
3	MISCELLANEOUS DETAILS
4-7	PLAN



SUMMARY OF QUANTITIES			
CODE NO.	PAY ITEM	UNIT	TOTAL
40200800	AGGREGATE SURFACE COURSE, TYPE B	TON	51
40600275	BITUMINOUS MATERIALS (PRIME COAT)	POUND	124,456
40600982	HOT-MIX ASPHALT SURFACE REMOVAL	SQ YD	313
	-BUTT JOINT		
40603085	HOT-MIX ASPHALT BINDER COURSE, IL 19.0, N70	TON	5,800
40604052	HOT-MIX ASPHALT SURFACE COURSE, MIX 'C', N70	TON	4,775
48100100	AGGREGATE SHOULDERS, TYPE A	TON	4,500
56109210	WATER VALVES TO BE ADJUSTED	EACH	1
60255500	MANHOLES TO BE ADJUSTED	EACH	3
67100100	MOBILIZATION	L SUM	1
70100460	TRAFFIC CONTROL AND PROTECTION STANDARD 701306	L SUM	1
70300100	SHORT-TERM PAVEMENT MARKING	FOOT	3,936
Δ78001110	PAINT PAVEMENT MARKING - LINE 4"	FOOT	65,520
Δ78001130	PAINT PAVEMENT MARKING - LINE 6"	FOOT	66
X4401198	HOT MIX ASPHALT SURFACE REMOVAL	SQ YD	1,543
	Δ SPECIALTY ITEM		

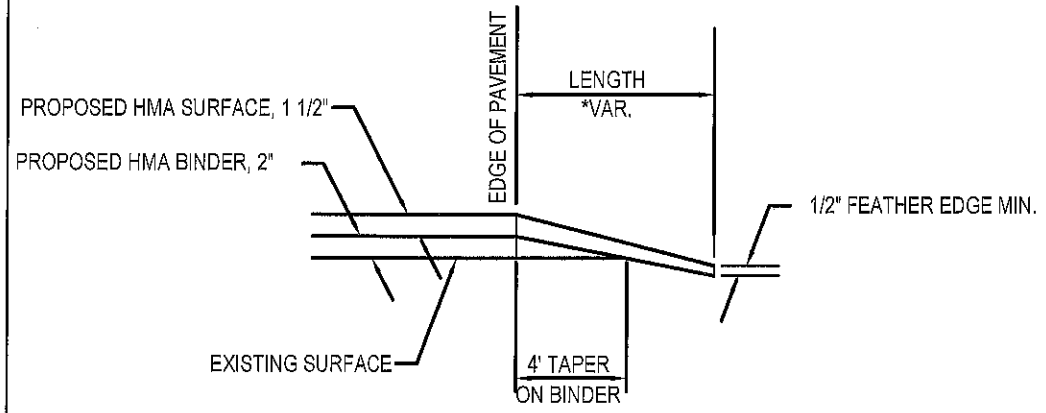
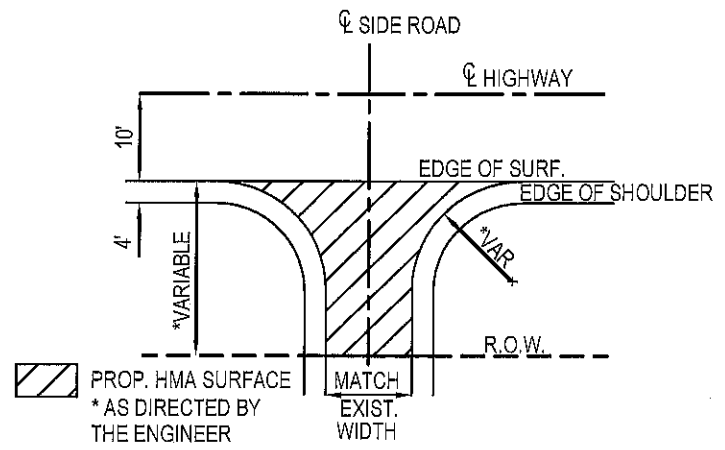
STANDARDS
701006-05
701301-04
701306-04
701311-03
701901-08
780001-05
BLR 24-2

STATE OF ILLINOIS DEPARTMENT OF TRANSPORTATION	
APPROVED	3/1/2021
	<i>[Signature]</i>
	FRANKLIN COUNTY HIGHWAY ENGINEER
PASSED	3-3-21
	<i>[Signature]</i>
	DEPUTY DIRECTOR OF HIGHWAYS, REGION 5 ENGINEER
DISTRICT 9 ENGINEER OF LOCAL ROADS & STREETS	
RELEASING FOR BID	
BASED ON LIMITED REVIEW	
	<i>[Signature]</i>
	DEPUTY DIRECTOR OF HIGHWAYS, REGION 5 ENGINEER

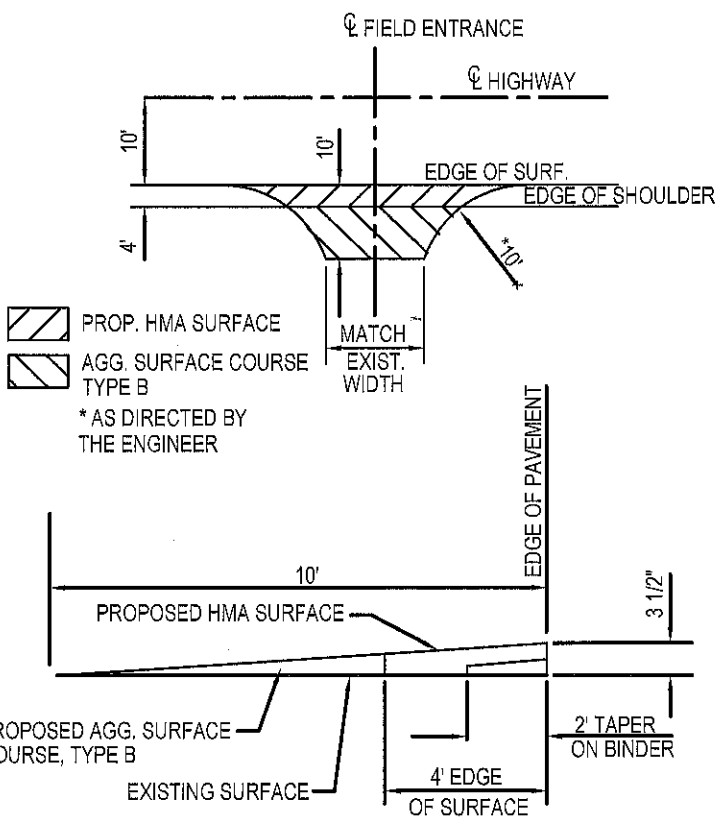


[Signature]
MICHAEL A. ROLLA
ILLINOIS REGISTERED PROFESSIONAL ENGINEER
#062-056332
LIC. EXPIRES 11/30/2021

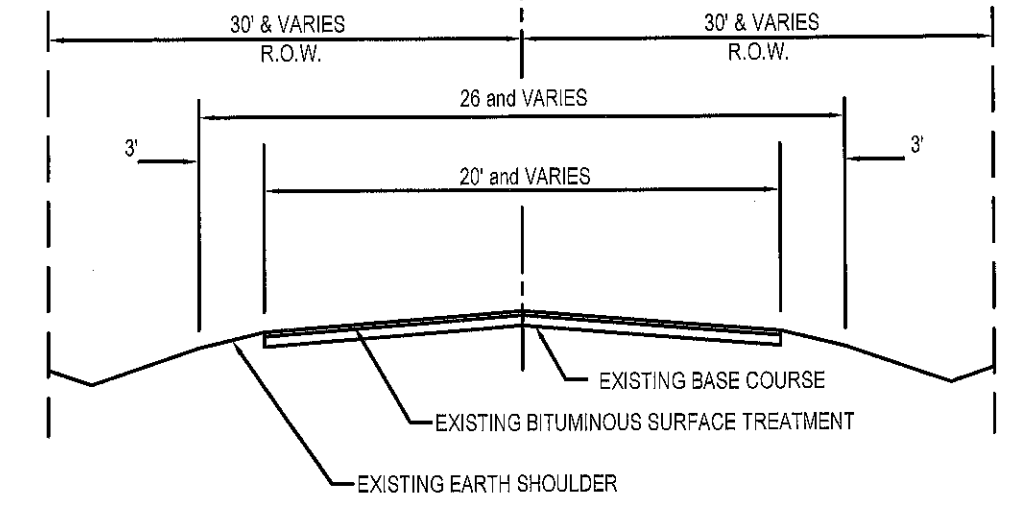
LOCATION MAP
NET LENGTH = 3.74 miles (19755 Feet)



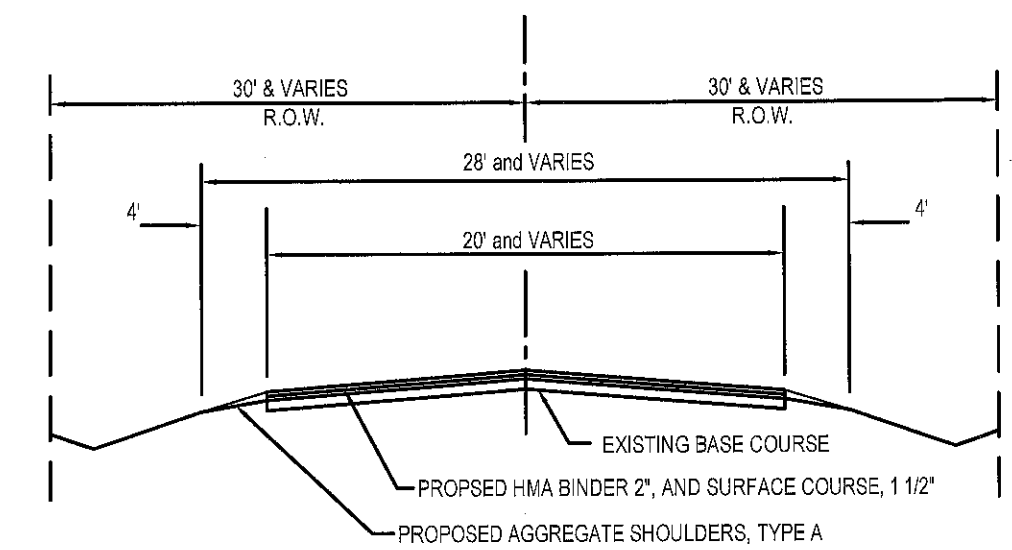
SIDEROAD DETAILS



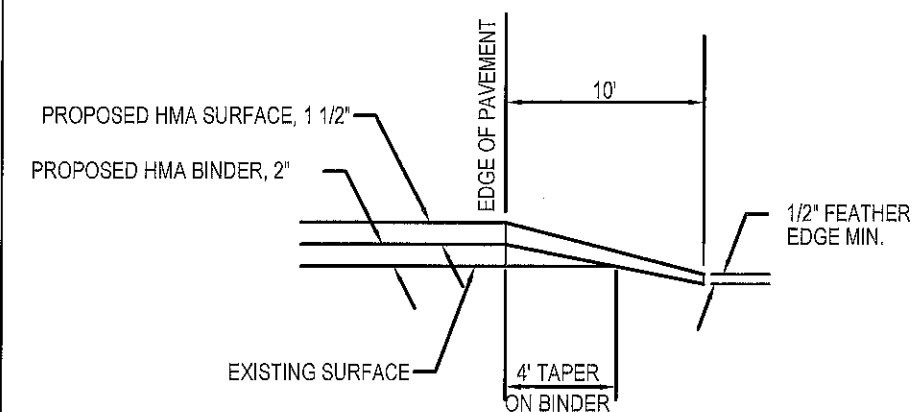
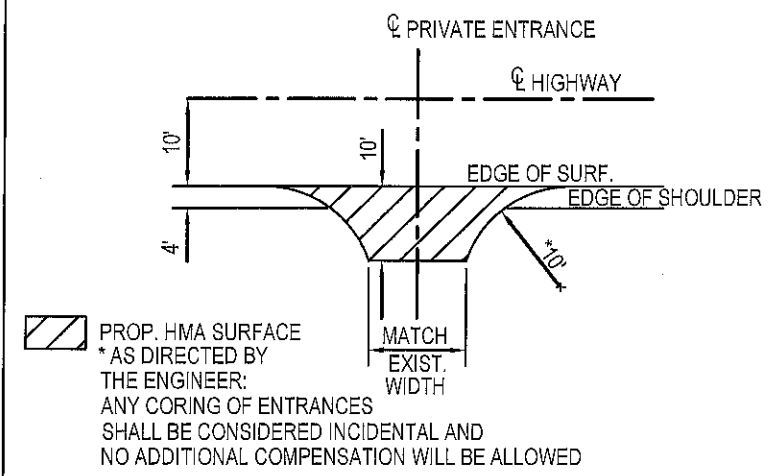
FIELD ENTRANCE DETAILS



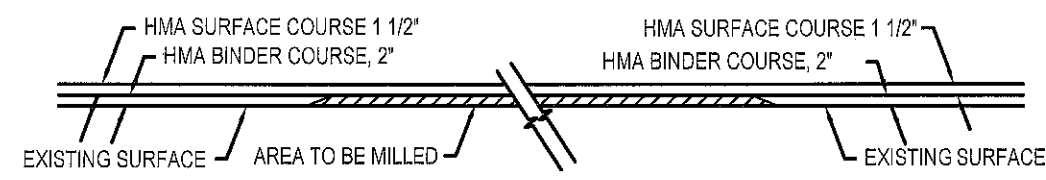
TYPICAL EXISTING SECTION



TYPICAL PROPOSED SECTION

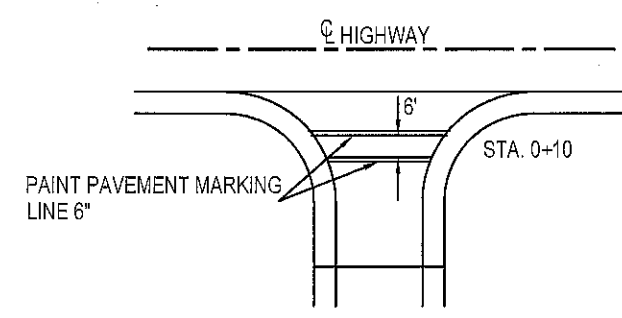


PRIVATE AND COMMERCIAL ENTRANCE DETAILS

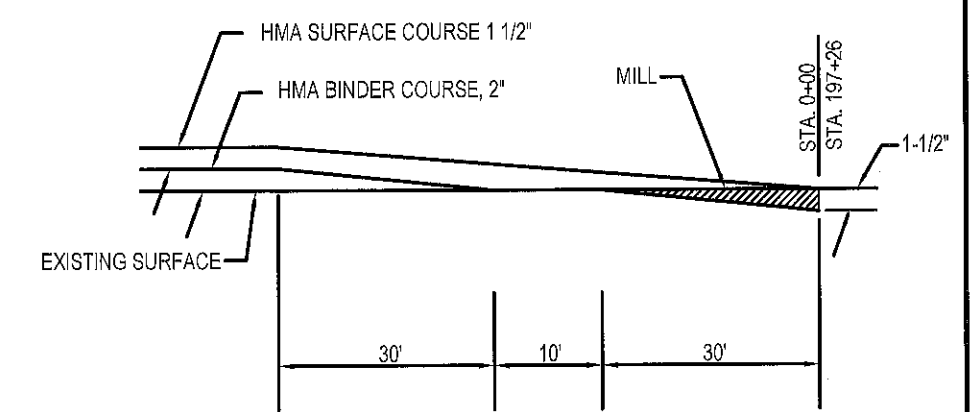


HMA REMOVAL-VARIABLE DEPTH

STA. 0+25 TO 3+77: WIDTH VARIES
SEE SHEET 3 FOR SCHEDULE



CROSSWALK DETAIL



BUTT JOINT

MISCELLANEOUS DETAILS & TYPICAL SECTIONS

FIELD ENTRANCE QUANTITIES		
ENTRANCES	AGGREGATE SURFACE COURSE TYPE B, TON	HOT MIX ASPHALT SURFACE COURSE, MIX "C", N70, TON
ONE (1) ENTRANCE	3	1
TOTAL = 17 ENTRANCES	51	17

MAILBOX TURNOUT QUANTITIES		
TURNOUT	BITUMINOUS MATERIALS (PRIME COAT) GALLON	HOT MIX ASPHALT SURFACE COURSE, MIX "C", N70, TON
ONE (1) TURNOUT	3	1
TOTAL = 35 TURNOUTS	105	35

PRIVATE ENTRANCE QUANTITIES		
ENTRANCES	BITUMINOUS MATERIALS (PRIME COAT) GALLON	HOT MIX ASPHALT SURFACE COURSE, MIX "C", N70, TON
ONE (1) ENTRANCE	6	3.5
TOTAL = 61 ENTRANCES	366	213.5

COMMERCIAL ENTRANCE QUANTITIES		
ENTRANCES	BITUMINOUS MATERIALS (PRIME COAT) GALLON	HOT MIX ASPHALT SURFACE COURSE, MIX "C", N70, TON
ONE (1) ENTRANCE	11	5
TOTAL = 9 ENTRANCES	99	45

SIDEROAD QUANTITIES		
ENTRANCES	BITUMINOUS MATERIALS (PRIME COAT) GALLON	HOT MIX ASPHALT SURFACE COURSE, MIX "C", N70, TON
STA. 4+15 LT	26	12
STA. 4+21 RT	26	5
STA. 5+50 RT	26	36
STA. 5+59 LT	26	9
STA. 10+10 LT	26	6
STA. 10+80 RT	26	10
STA. 15+88 LT	26	7
STA. 38+00 RT	26	6
STA. 64+28 RT	26	7
STA. 104+76 RT	26	6
STA. 117+25 LT	26	10
159+28 RT	26	35
STA. 170+46 LT	26	7
TOTAL = 13 ENTRANCES	338	156

SCHEDULE OF PAVEMENT MARKING LINE, 4"							
NORTHBOUND LANE			SOUTHBOUND LANE			STATION	EDGE LINE (WHITE SOLID)
STATION	NO PASSING (YELLOW SOLID)	PASSING (YELLOW DASHED)	STATION	NO PASSING (YELLOW SOLID)	PASSING (YELLOW DASHED)		
0+00 TO 6+00		150	6+00 TO 8+00	200		0+00 TO 197+55	38864
6+00 TO 8+00		50	14+25 TO 18+25		100		
8+00 TO 14+25		156	26+25 TO 34+50	825			
14+25 TO 18+25	400		34+50 TO 40+00	550			
18+25 TO 26+25		200	40+00 TO 44+75		119		
26+25 TO 34+50		206	51+50 TO 60+50	900			
34+50 TO 40+00	550		60+50 TO 69+50	900			
40+00 TO 44+75	475		69+50 TO 80+00		263		
44+75 TO 51+50		169	80+00 TO 89+50	950			
51+50 TO 60+50		225	89+50 TO 93+00	350			
60+50 TO 69+50	900		93+00 TO 97+00	400			
69+50 TO 80+00	1050		97+00 TO 109+25	1225			
80+00 TO 89+50		238	109+25 TO 113+25		100		
89+50 TO 93+00	350		113+25 TO 120+00	675			
93+00 TO 97+00		100	120+00 TO 128+00		200		
97+00 TO 109+25	1225		132+50 TO 139+00	650			
109+25 TO 113+25	400		140+00 TO 144+50		113		
113+25 TO 120+00	675		144+50 TO 147+00	250			
120+00 TO 128+00	800		147+00 TO 152+00	500			
128+00 TO 132+50		113	152+00 TO 177+00	2500			
132+50 TO 139+00		163	177+00 TO 184+00		175		
139+00 TO 140+00		25	184+00 TO 185+50	150			
140+00 TO 144+50	450		185+50 TO 194+05	855			
144+50 TO 147+00	250		194+05 TO 197+55	350			
147+00 TO 152+00		125					
152+00 TO 177+00	2500						
177+00 TO 184+00	700						
184+00 TO 185+50	150						
185+50 TO 194+05		214					
194+05 TO 197+55	350						
	11225	2134		12230	1070	TOTAL WHITE	38864
TOTAL YELLOW			26659				

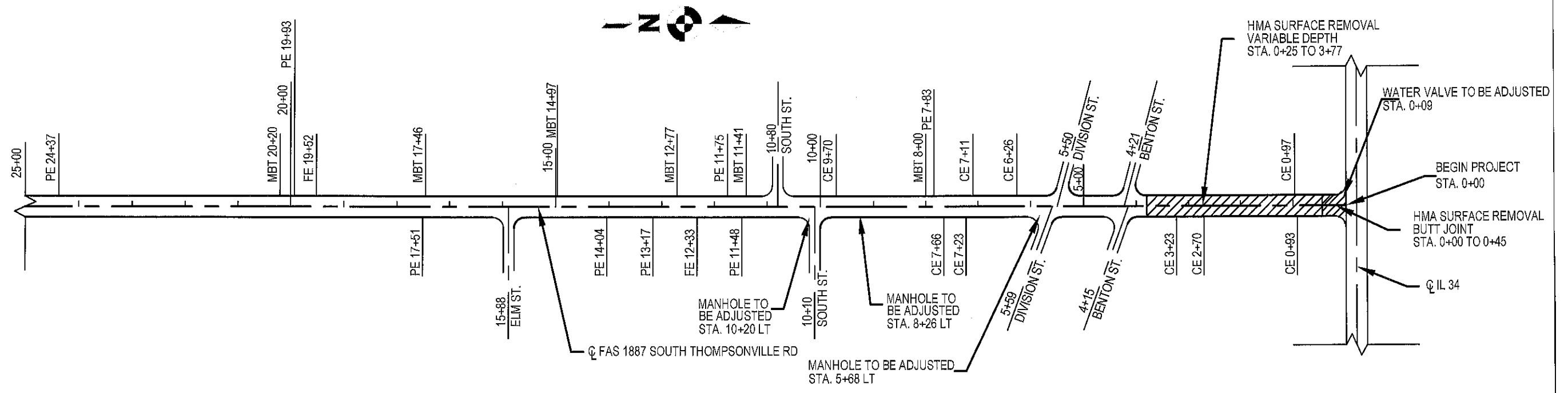
MILLING SCHEDULE			
STATION	TYPE	WIDTH	COLD MILLING
0+00 TO 0+45	BUTT JT		240
196+96 TO 197+26	BUTT JT		73
0+25 TO 1+25 LT	VARIABLE DEPTH	10 (SHOULDER)	112
0+45 TO 3+75	VARIABLE DEPTH	22 (MAINLINE)	794
0+25 TO 0+68 RT	VARIABLE DEPTH	8 (SHOULDER)	38
1+25 TO 2+25 LT	VARIABLE DEPTH	13 (SHOULDER)	144
0+68 TO 3+77 RT	VARIABLE DEPTH	10 (SHOULDER)	343
2+25 TO 3+25 LT	VARIABLE DEPTH	10 (SHOULDER)	112
TOTAL			1856

SCHEDULE OF PAVEMENT MARKING LINE, 6"		
CROSSWALK		
STATION	LENGTH	TOTAL LENGTH
0+10	33	66

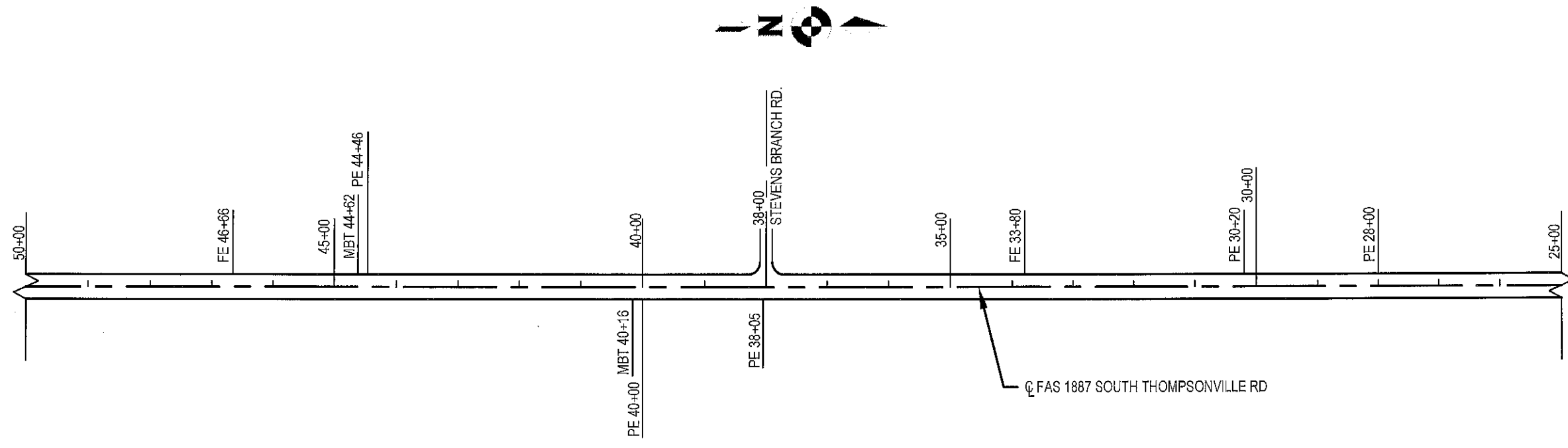
MISCELLANEOUS DETAILS

SCALE 1" = 200'

ROUTE	SECTION	COUNTY	SHEET NO.
FAS 1887	07-00163-00-RS	FRANKLIN	4 OF 7
CONTRACT 99664			



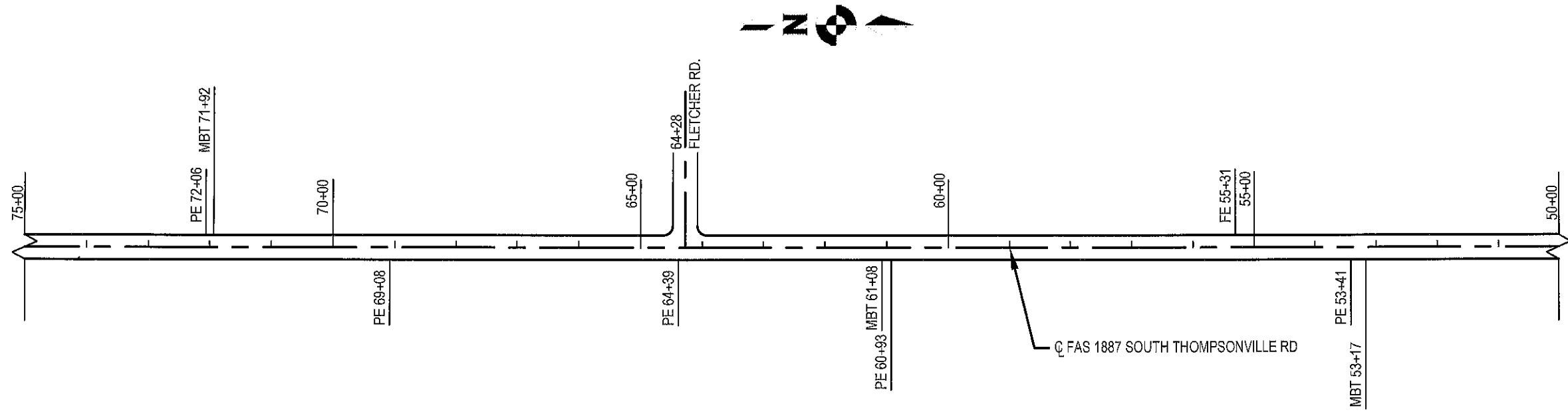
SCALE 1" = 200'



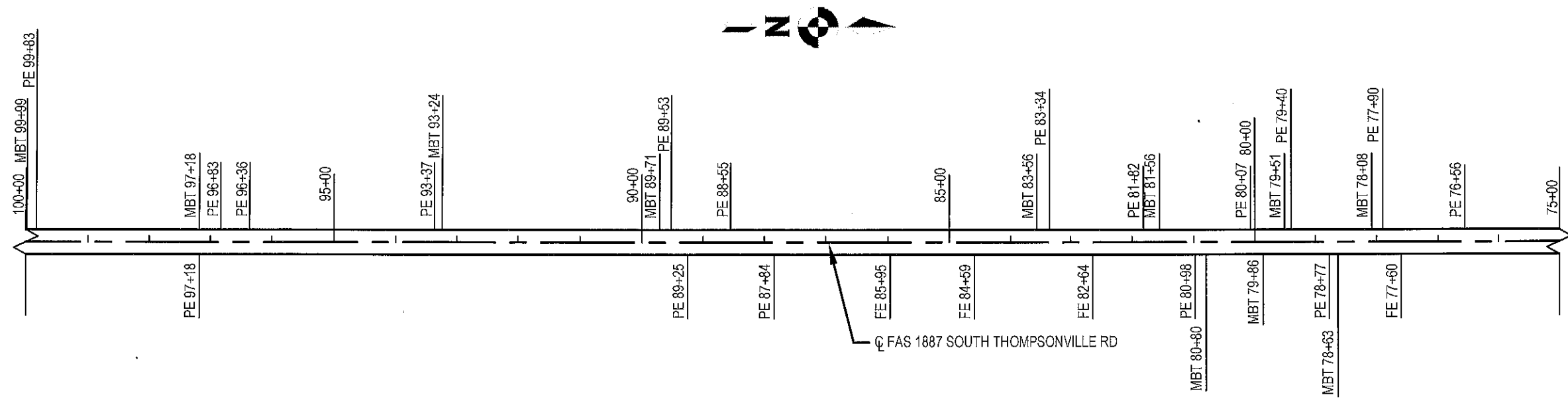
PLAN
STATION 0+00 TO 50+00

SCALE 1" = 200'

ROUTE	SECTION	COUNTY	SHEET NO.
FAS 1887	07-00163-00-RS	FRANKLIN	5 OF 7
CONTRACT 9964			



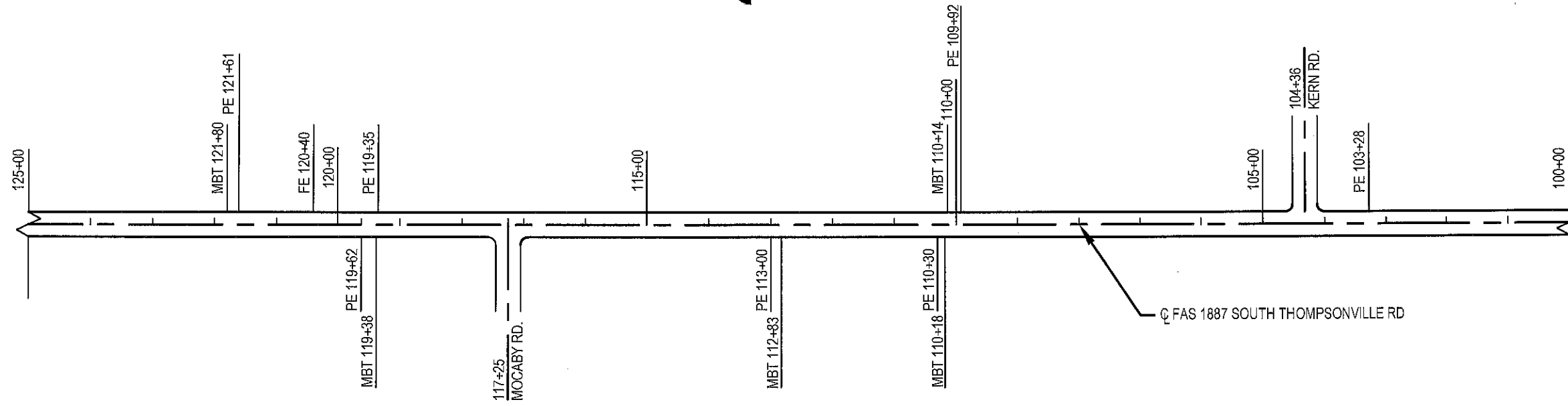
SCALE 1" = 200'



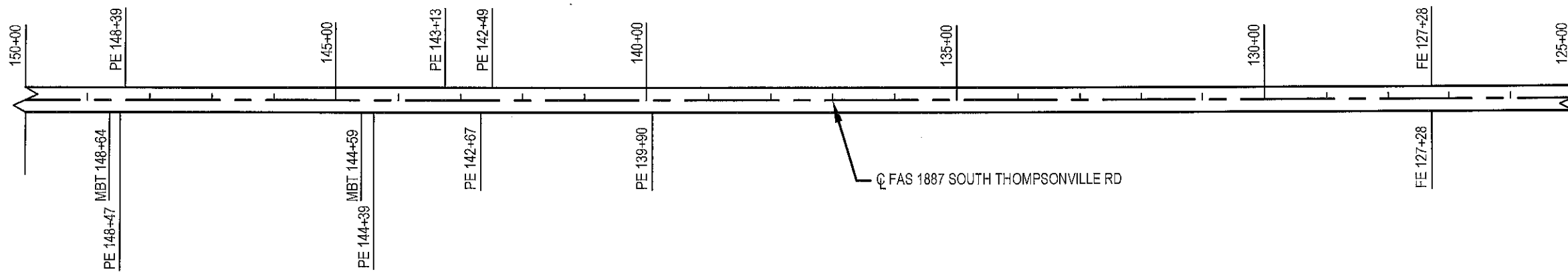
PLAN
STATION 50+00 TO 100+00

SCALE 1" = 200'

ROUTE	SECTION	COUNTY	SHEET NO.
FAS 1887	07-00163-00-RS	FRANKLIN	6 OF 7
CONTRACT 99664			



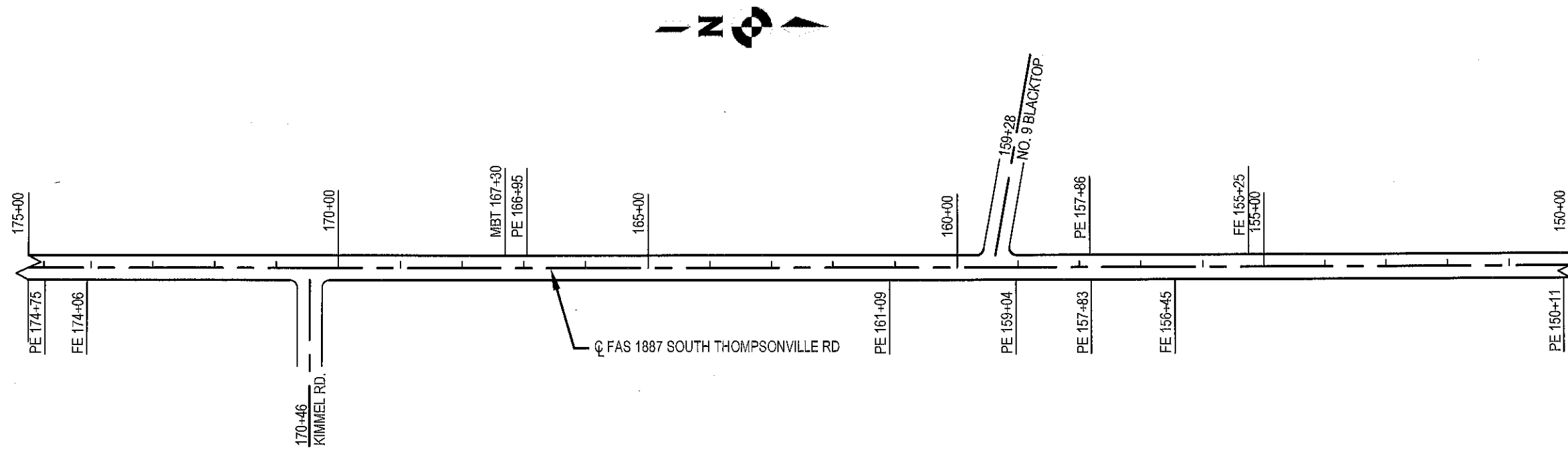
SCALE 1" = 200'



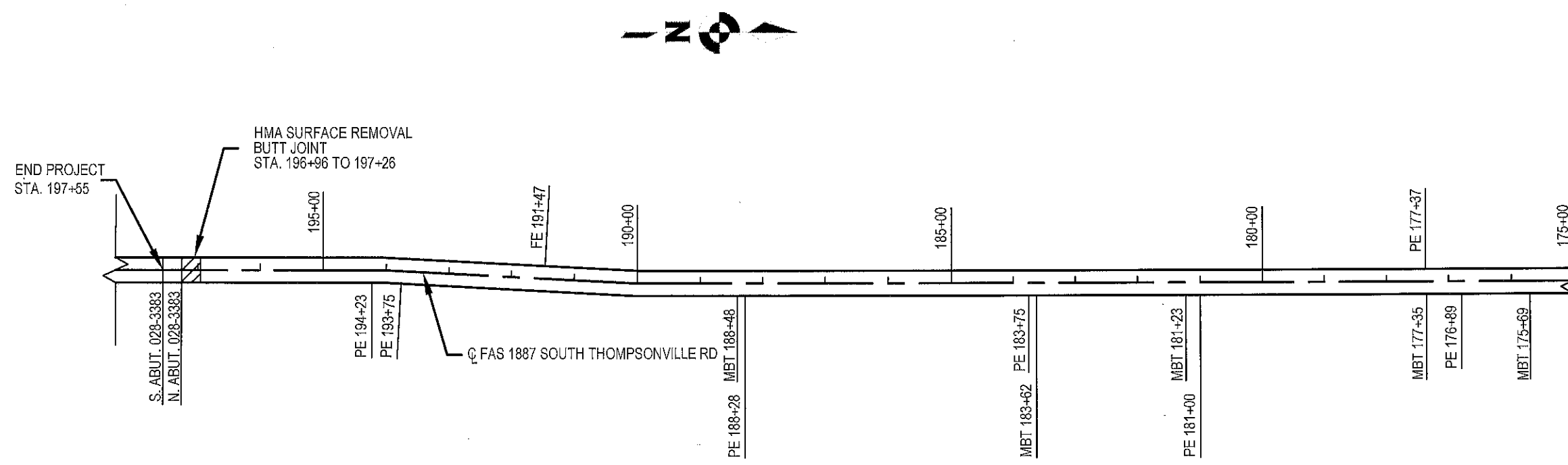
PLAN
STATION 100+00 TO 150+00

SCALE 1" = 200'

ROUTE	SECTION	COUNTY	SHEET NO.
FAS 1887	07-00163-00-RS	FRANKLIN	7 OF 7
CONTRACT 99664			



SCALE 1" = 200'



PLAN
STATION 150+00 TO 197+26