

STATE OF ILLINOIS
DEPARTMENT OF TRANSPORTATION

F.A. RTE.	SECTION	COUNTY	TOTAL SHEETS	SHEET NO.
VAR	*	SANGAMON	11	1
		ILLINOIS	CONTRACT NO. 72M95	

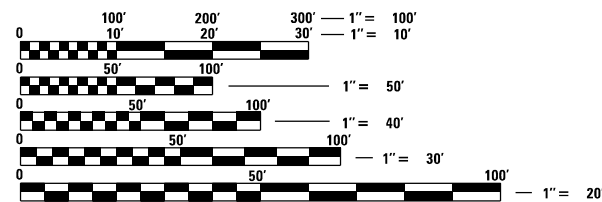
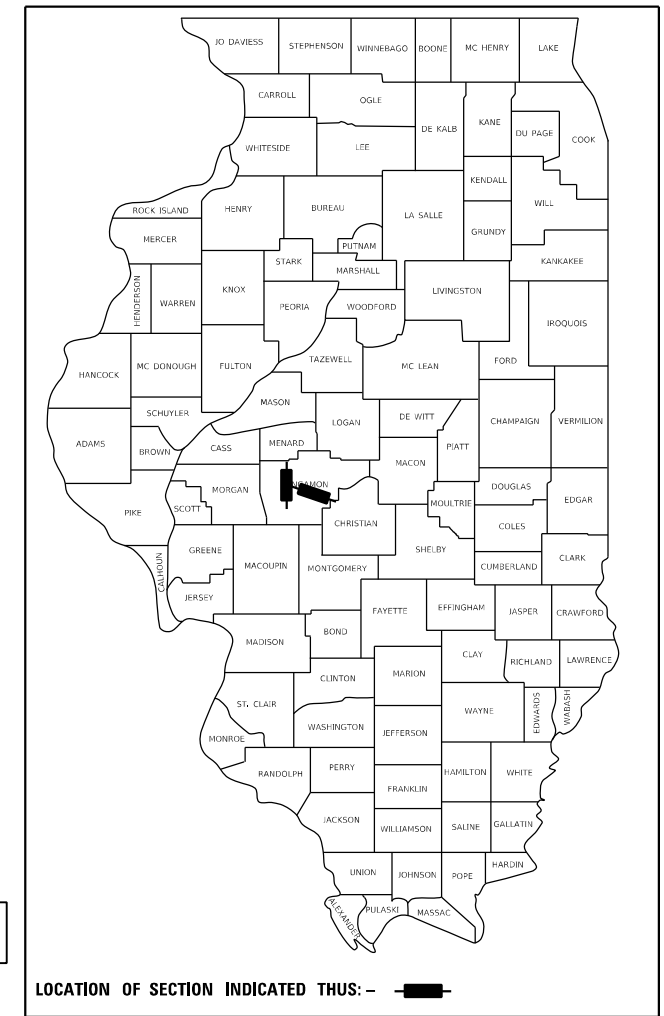
* D6 WEED CONTROL SANG CO 2021

FOR INDEX OF SHEETS, SEE SHEET NO. 2

PROPOSED HIGHWAY PLANS

VARIOUS ROUTES SECTION D6 WEED CONTROL SANG CO 2021 WEED SPRAYING SANGAMON COUNTY

D-96-046-21

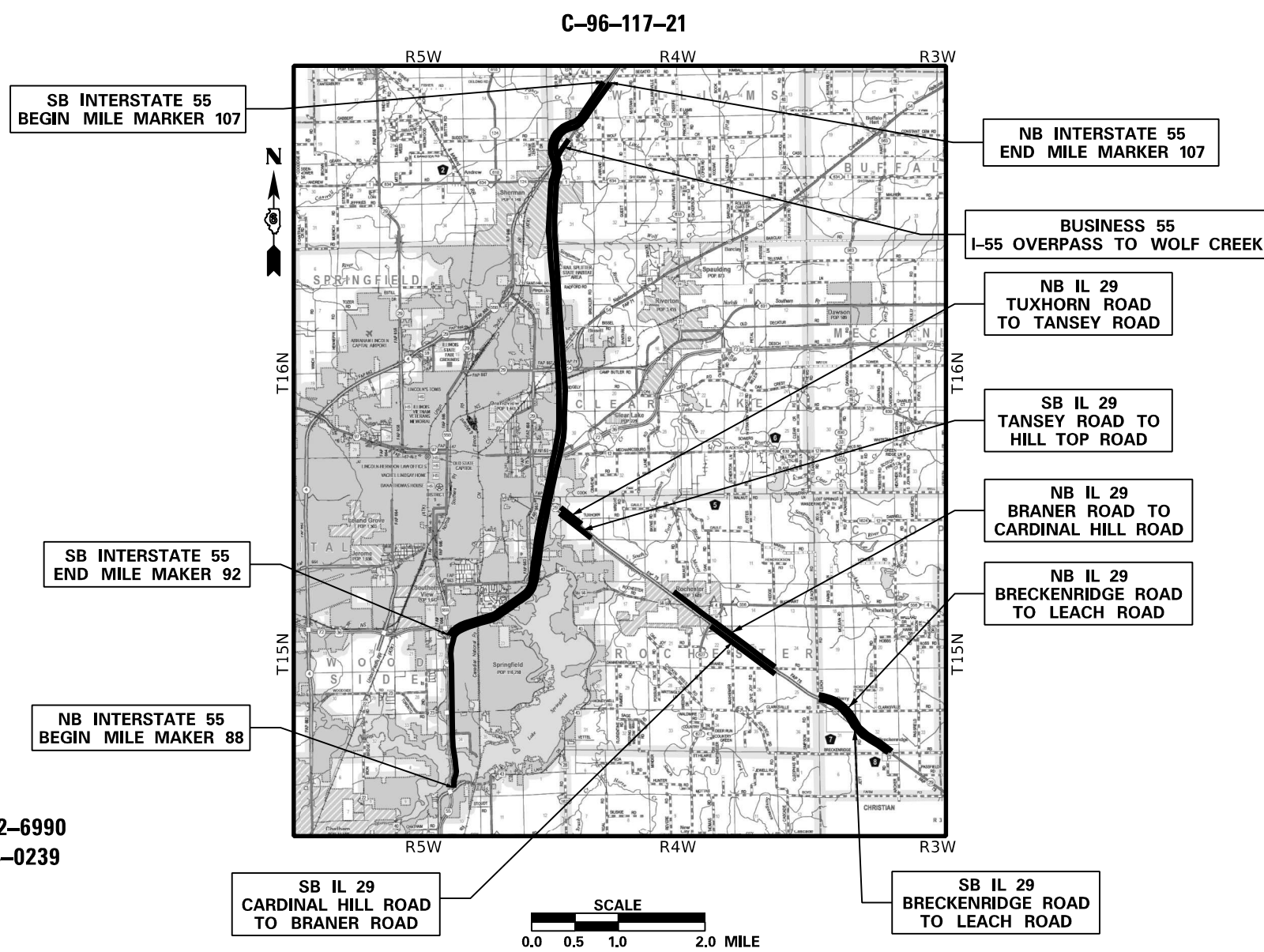


FULL SIZE PLANS HAVE BEEN PREPARED USING STANDARD ENGINEERING SCALES. REDUCED SIZED PLANS WILL NOT CONFORM TO STANDARD SCALES. IN MAKING MEASUREMENTS ON REDUCED PLANS, THE ABOVE SCALES MAY BE USED.

J.U.L.I.E.
JOINT UTILITY LOCATION INFORMATION FOR EXCAVATORS
1-800-892-0123
OR 811

PROJECT ENGINEER: BRIAN LANINGHAM (217) 782-6990
PROJECT MANAGER: MICHAEL WHITLING (217) 524-0239

CONTRACT NO. 72M95



STATE OF ILLINOIS
DEPARTMENT OF TRANSPORTATION

SUBMITTED March 23 2021

[Signature]
REGIONAL ENGINEER

May 7, 2021
[Signature]
ENGINEER OF DESIGN AND ENVIRONMENT

May 7, 2021
[Signature]
DIRECTOR OF HIGHWAYS PROJECT IMPLEMENTATION

PRINTED BY THE AUTHORITY
OF THE STATE OF ILLINOIS

MODEL Summary of Quantities
 FILE Name: P:\gbl\mson\mson\illinois\pp\PHDDOT\Documents\DOT Offices\District 6\Projects\DE72M95\CADD\Drawings\CADD\Drawings\DE72M95-SH-03-500.dwg

				PPS# 0-02066-6003	
				100% STATE SANGAMON LANDSCAPE	
				0031	
				RURAL	
CODE NO.	ITEM	UNIT	TOTAL QUANTITY		
67100100	MOBILIZATION	L SUM	1	1	
K0029614	WEED CONTROL, AQUATIC	GALLON	22	22	
K1003660	MOWING CYCLES	EACH	2	2	
X2503110	MOWING (SPECIAL)	ACRE	6.1	6.1	
X2503318	INTERSEEDING, CLASS 4B (MODIFIED)	ACRE	22	22	

REV. - MS

USER NAME = whitlingme	DESIGNED -	REVISED -	STATE OF ILLINOIS DEPARTMENT OF TRANSPORTATION	SUMMARY OF QUANTITIES				F.A. RTE.	SECTION	COUNTY	TOTAL SHEETS	SHEET NO.
PLOT SCALE = 100.0000' / in.	DRAWN -	REVISED -						VAR	*	SANGAMON	11	3
PLOT DATE = 3/22/2021	CHECKED -	REVISED -		SCALE: SHEET OF SHEETS STA. TO STA.				CONTRACT NO. 72M95				
	DATE -	REVISED -						ILLINOIS FED. AID PROJECT				

* D6 WEED CONTROL SANG CO 2021

NB BUSINESS 55 - NORTH OF SHERMAN										
ROUTE	SITE #	GENERAL LOCATION RANGE	APPROXIMATE PAVEMENT STATIONING	SIDE OF ROUTE	LENGTH	WIDTH	AREA (SQ FT)	K0029614 WEED CONTROL AQUATIC (GALLON)	X2503110 MOWING (SPECIAL) ACRE	X2503318 INTERSEEDING, CLASS 4B (MODIFIED) (ACRE)
BUSINESS 55	1	I-55 OVERPASS TO WOLF CREEK	316+25.00	EAST SIDE	75	40	3,000.00	0.03	0.07	0.07
	2		319+50.00	EAST SIDE	355	60	21,300.00	0.24	0.49	0.49
TOTALS =								0.28	0.56	0.56

NB INTERSTATE 55 - OUTSIDE SHOULDER										
ROUTE	SITE #	GENERAL LOCATION RANGE (MILE MARKER)	APPROXIMATE MILE MARKER	SIDE OF ROUTE	LENGTH	WIDTH	AREA (SQ FT)	K0029614 WEED CONTROL AQUATIC (GALLON)	X2503110 MOWING (SPECIAL) ACRE	X2503318 INTERSEEDING, CLASS 4B (MODIFIED) (ACRE)
I-55 NB	1	MM 88 to MM 94	88.41	OUTSIDE	60	30	1800.0	0.02		0.04
	2		92.35	OUTSIDE	30	30	900.0	0.01		0.02
	3		92.6	OUTSIDE	150	40	6000.0	0.07		0.14
I-55 NB	4	MM 94 to MM 98	94.32	OUTSIDE	250	15	3750.0	0.04		0.09
	5		94.41	OUTSIDE	200	10	2000.0	0.02	0.05	0.05
	6		94.81	OUTSIDE	50	20	1000.0	0.01	0.02	0.02
	7		95.03	OUTSIDE	30	30	900.0	0.01		0.02
	8		95.13	OUTSIDE	30	30	900.0	0.01		0.02
	9		95.17	OUTSIDE	50	20	1000.0	0.01		0.02
	10		95.26	OUTSIDE	60	30	1800.0	0.02		0.04
	11		95.35	OUTSIDE	70	30	2100.0	0.02		0.05
	12		95.47	OUTSIDE	60	30	1800.0	0.02		0.04
	13		95.75	OUTSIDE	60	40	2400.0	0.03		0.06
	14		95.77	OUTSIDE	60	40	2400.0	0.03		0.06
	15		95.81	OUTSIDE	15	15	225.0	0.00		0.01
	16		95.83	OUTSIDE	50	50	2500.0	0.03		0.06
	17		95.86	OUTSIDE	30	30	900.0	0.01		0.02
	18		95.87	OUTSIDE	40	30	1200.0	0.01		0.03
	19		95.97	OUTSIDE	60	30	1800.0	0.02		0.04
	20		96.75	OUTSIDE	30	30	900.0	0.01		0.02
	21		96.9	OUTSIDE	60	30	1800.0	0.02		0.04
	22		97.04	OUTSIDE	30	30	900.0	0.01		0.02
I-55 NB	23	MM 98 to MM 100	98.38	OUTSIDE	30	20	600.0	0.01		0.01
	24		99	OUTSIDE	60	25	1500.0	0.02	0.03	0.03
	25		99.12	OUTSIDE	1500	40	60000.0	0.69	1.38	1.38
I-55 NB	26	MM 100 to MM 107	100.64	OUTSIDE	40	60	2400.0	0.03	0.06	0.06
	27		103.85	OUTSIDE	30	10	300.0	0.00		0.01
	28		104.04	OUTSIDE	80	30	2400.0	0.03	0.06	0.06
	29		104.08	OUTSIDE	30	20	600.0	0.01	0.01	0.01
	30		104.09	OUTSIDE	30	40	1200.0	0.01		0.03
	31		105.01	OUTSIDE	20	20	400.0	0.00		0.01
	32		106.82	OUTSIDE	200	10	2000.0	0.02		0.05
TOTALS =								1.27	1.60	2.53

MODEL SUMMARY OF QUANTITIES
 FILE NAME: P:\gibson\m02a\illinois\p01\DOT\Documents\DOT_Offices\Istret\B\Projects\DE72M95\CAD\Drawn\CAD\Drawn\DE72M95-IH-04-04-04-04.dgn

USER NAME = whitlingme	DESIGNED -	REVISED -
	DRAWN -	REVISED -
PLOT SCALE = 100,0000' / in.	CHECKED -	REVISED -
PLOT DATE = 3/22/2021	DATE -	REVISED -

**STATE OF ILLINOIS
DEPARTMENT OF TRANSPORTATION**

SCHEDULE OF QUANTITIES

SCALE: SHEET OF SHEETS STA. TO STA.

F.A. RTE.	SECTION	COUNTY	TOTAL SHEETS	SHEET NO.
	*	SANGAMON	11	4
			CONTRACT NO. 72M95	
		ILLINOIS FED. AID PROJECT		

SB INTERSTATE 55 - OUTSIDE SHOULDER										
ROUTE	SITE #	GENERAL LOCATION RANGE	APPROXIMATE MILE MARKER	SIDE OF ROUTE	LENGTH	WIDTH	AREA (SQ FT)	K0029614 WEED CONTROL AQUATIC (GALLON)	X2503110 MOWING (SPECIAL) ACRE	X2503318 INTERSEEDING, CLASS 4B (MODIFIED) (ACRE)
I-55 SB	1	MM 105 to MM 104	104.12	OUTSIDE	60	30	1800.0	0.02	0.04	0.04
	2		104.06	OUTSIDE	30	30	900.0	0.01	0.02	0.02
	3		104	OUTSIDE	150	40	6000.0	0.07	0.14	0.14
I-55 SB	4	MM103 to MM 100	102.87	OUTSIDE	250	15	3750.0	0.04		0.09
	5		102.82	OUTSIDE	200	10	2000.0	0.02		0.05
	6		101.85	OUTSIDE	50	20	1000.0	0.01		0.02
	7		101.11	OUTSIDE	30	30	900.0	0.01		0.02
	8		100.6	OUTSIDE	30	30	900.0	0.01		0.02
I-55 SB	9	MM 100 to MM 96	99.36	OUTSIDE	50	20	1000.0	0.01	0.02	0.02
	10		98.68	OUTSIDE	60	30	1800.0	0.02		0.04
	11		97.05	OUTSIDE	70	30	2100.0	0.02	0.05	0.05
	12		96.96	OUTSIDE	60	30	1800.0	0.02		0.04
	13		96.93	OUTSIDE	60	40	2400.0	0.03		0.06
I-55 SB	14	MM 96 to MM 94	96.92	OUTSIDE	60	40	2400.0	0.03		0.06
	15		95.26	OUTSIDE	15	15	225.0	0.00		0.01
	16		95.08	OUTSIDE	50	50	2500.0	0.03	0.06	0.06
	17		94.84	OUTSIDE	30	30	900.0	0.01		0.02
	18		94.81	OUTSIDE	40	30	1200.0	0.01		0.03
	19		94.42	OUTSIDE	60	30	1800.0	0.02	0.04	0.04
	20		94.33	OUTSIDE	30	30	900.0	0.01	0.02	0.02
I-55 SB	21	MM 94 to MM 92	94.27	OUTSIDE	60	30	1800.0	0.02	0.04	0.04
	22		93.84	OUTSIDE	30	30	900.0	0.01		0.02
	23		93.79	OUTSIDE	30	20	600.0	0.01	0.01	0.01
	24		93.64	OUTSIDE	60	25	1500.0	0.02	0.03	0.03
	25		93.61	OUTSIDE	1500	40	60000.0	0.69	1.38	1.38
	26		92.44	OUTSIDE	40	60	2400.0	0.03		0.06
	27		92.34	OUTSIDE	30	10	300.0	0.00	0.01	0.01
TOTALS =								1.19	1.86	2.38

MODEL SUMMARY OF QUANTITIES
 FILE NAME: P:\g1\mason\cadd\illinois\pwr\DOT\Documents\DOT_Offices\Distct_6\Projects\DE72M95\CADD\Drawings\CAD\Drawings\DE72M95-SH-04-schedule.dgn

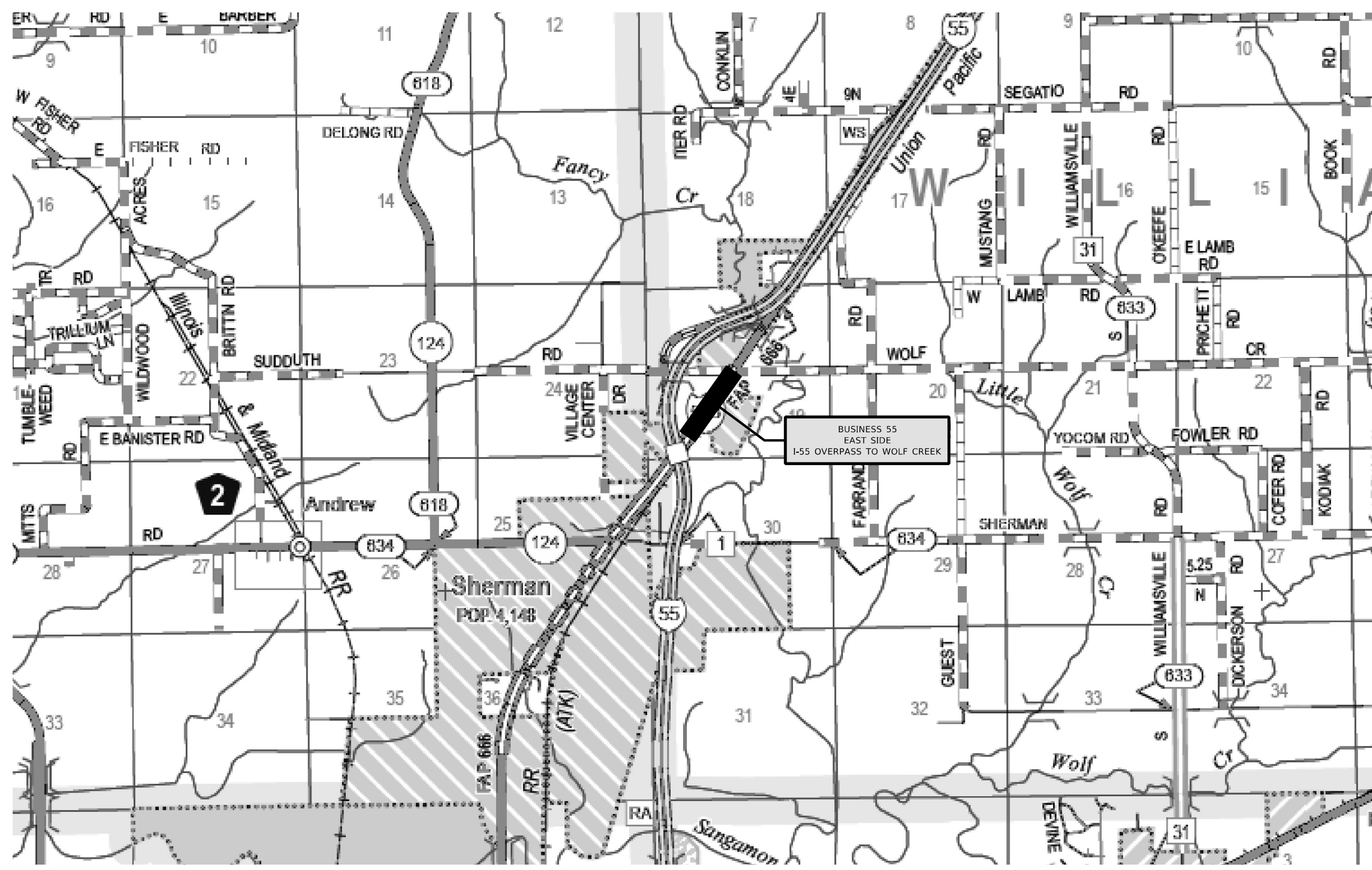
USER NAME = whitlingme	DESIGNED -	REVISED -
	DRAWN -	REVISED -
PLOT SCALE = 100,0000' / in.	CHECKED -	REVISED -
PLOT DATE = 3/22/2021	DATE -	REVISED -

**STATE OF ILLINOIS
DEPARTMENT OF TRANSPORTATION**

SCHEDULE OF QUANTITIES

SCALE: SHEET OF SHEETS STA. TO STA.

F.A. RTE.	SECTION	COUNTY	TOTAL SHEETS	SHEET NO.
	*	SANGAMON	11	5
CONTRACT NO. 72M95				
		ILLINOIS	FED. AID PROJECT	



MODEL: Business 55
 FILE NAME: P:\Illinois\DOT\Documents\DOT Office\Drawings\Projects\6627495\CAAD\Drawings\6627495-01-05-aba-Bus55.dwg

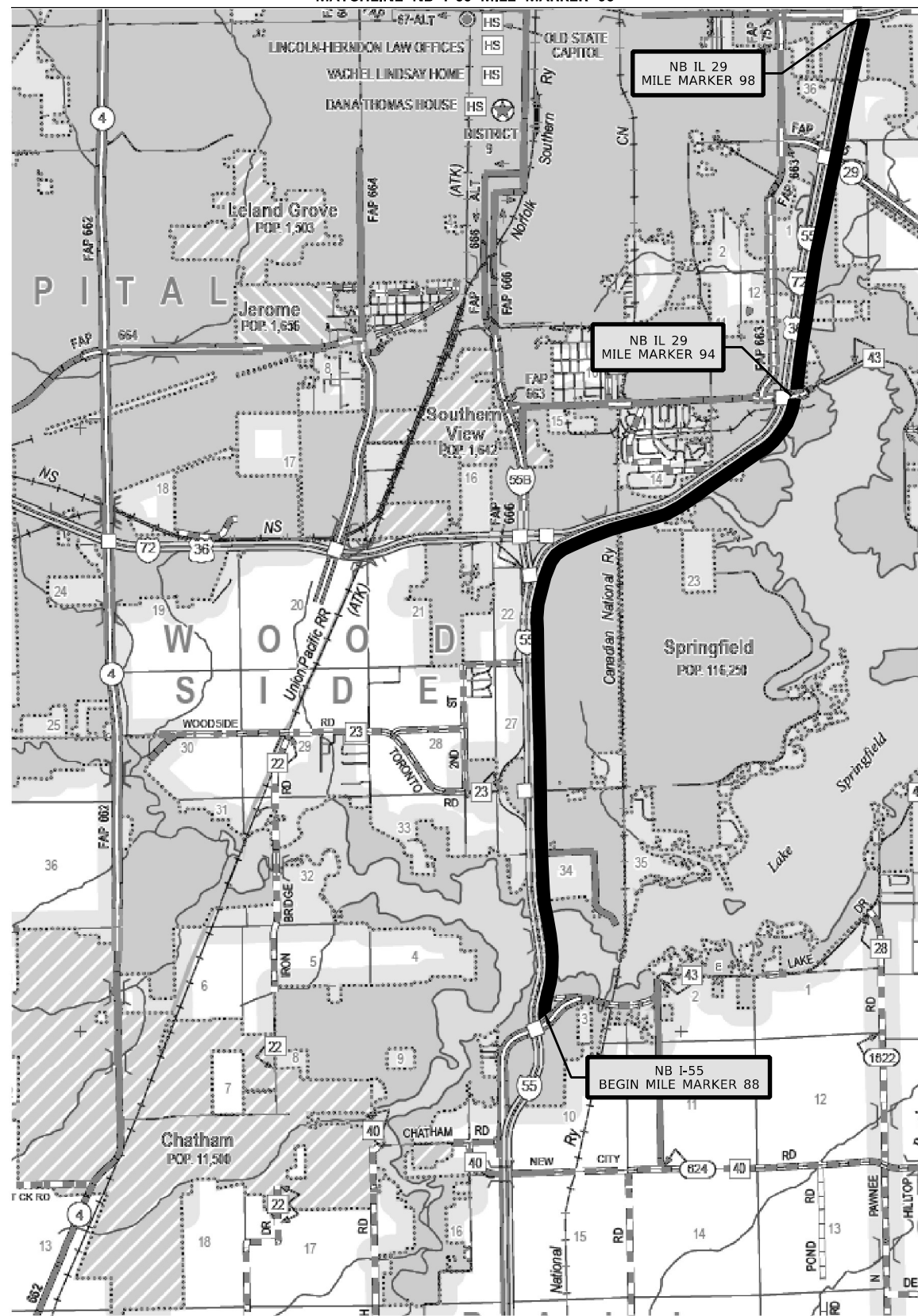
USER NAME = whitlingme	DESIGNED -	REVISED -
	DRAWN -	REVISED -
PLOT SCALE = 20,0000' / in.	CHECKED -	REVISED -
PLOT DATE = 3/22/2021	DATE -	REVISED -

STATE OF ILLINOIS
DEPARTMENT OF TRANSPORTATION

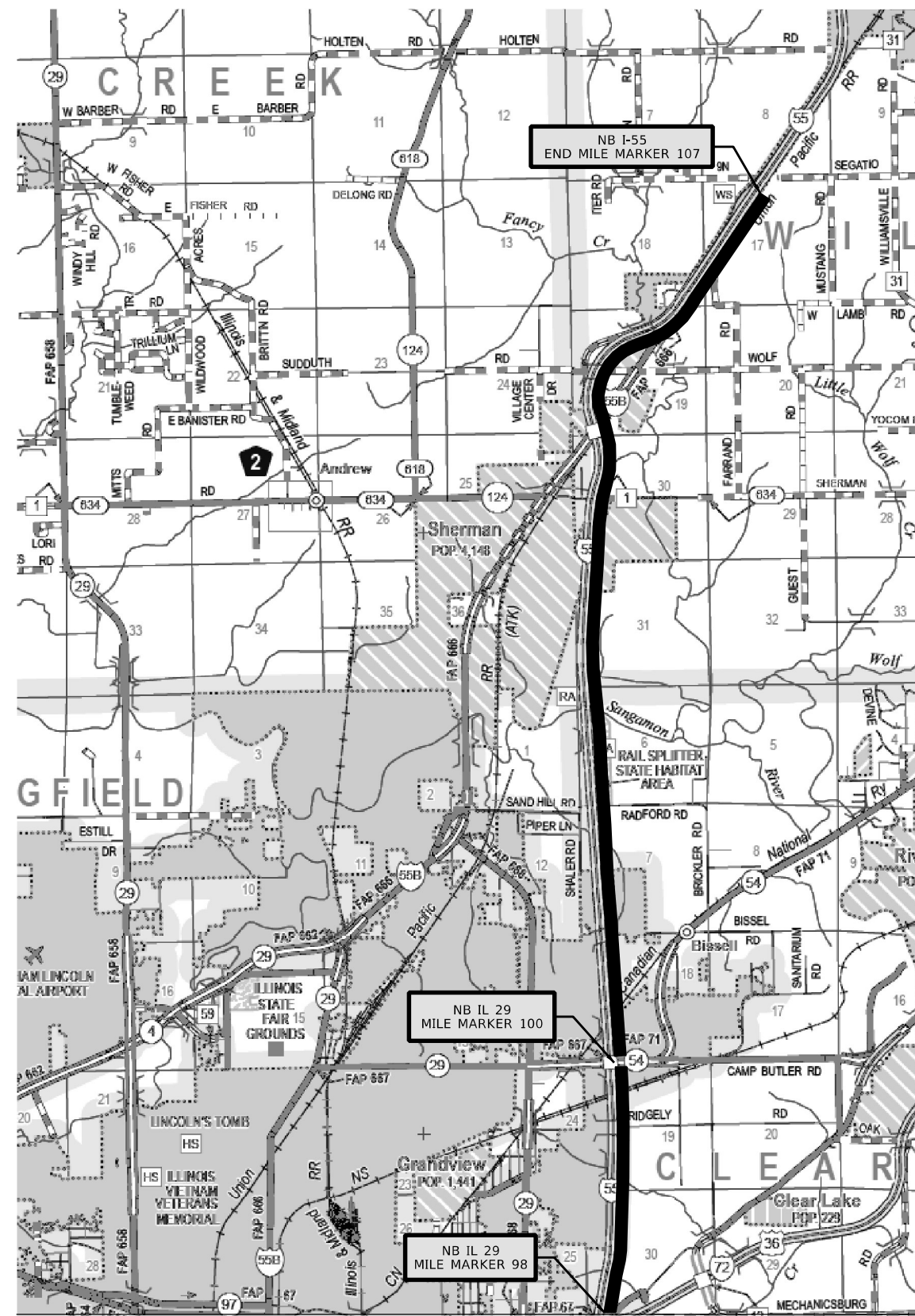
PLAN LOCATION	
BUSINESS 55	
SCALE:	SHEET OF SHEETS STA. TO STA.

F.A. RTE.	SECTION	COUNTY	TOTAL SHEETS	SHEET NO.
VAR		SANGAMON	11	7
			CONTRACT NO. 72M95	
		ILLINOIS FED. AID PROJECT		

MATCHLINE NB I-55 MILE MARKER 98



NB I-55
MILE MARKER 88 TO 98



MATCHLINE NB I-55 MILE MARKER 98

NB I-55
MILE MARKER 98 TO 107

MODEL I-55 NB_SHT 01
 FILE NAME: P:\GIS\GIS\Projects\I-55\I-55 NB_SHT 01.dwg
 PROJECT: I-55 NB_SHT 01
 OFFICE: Sangamon County
 DATE: 3/22/2021

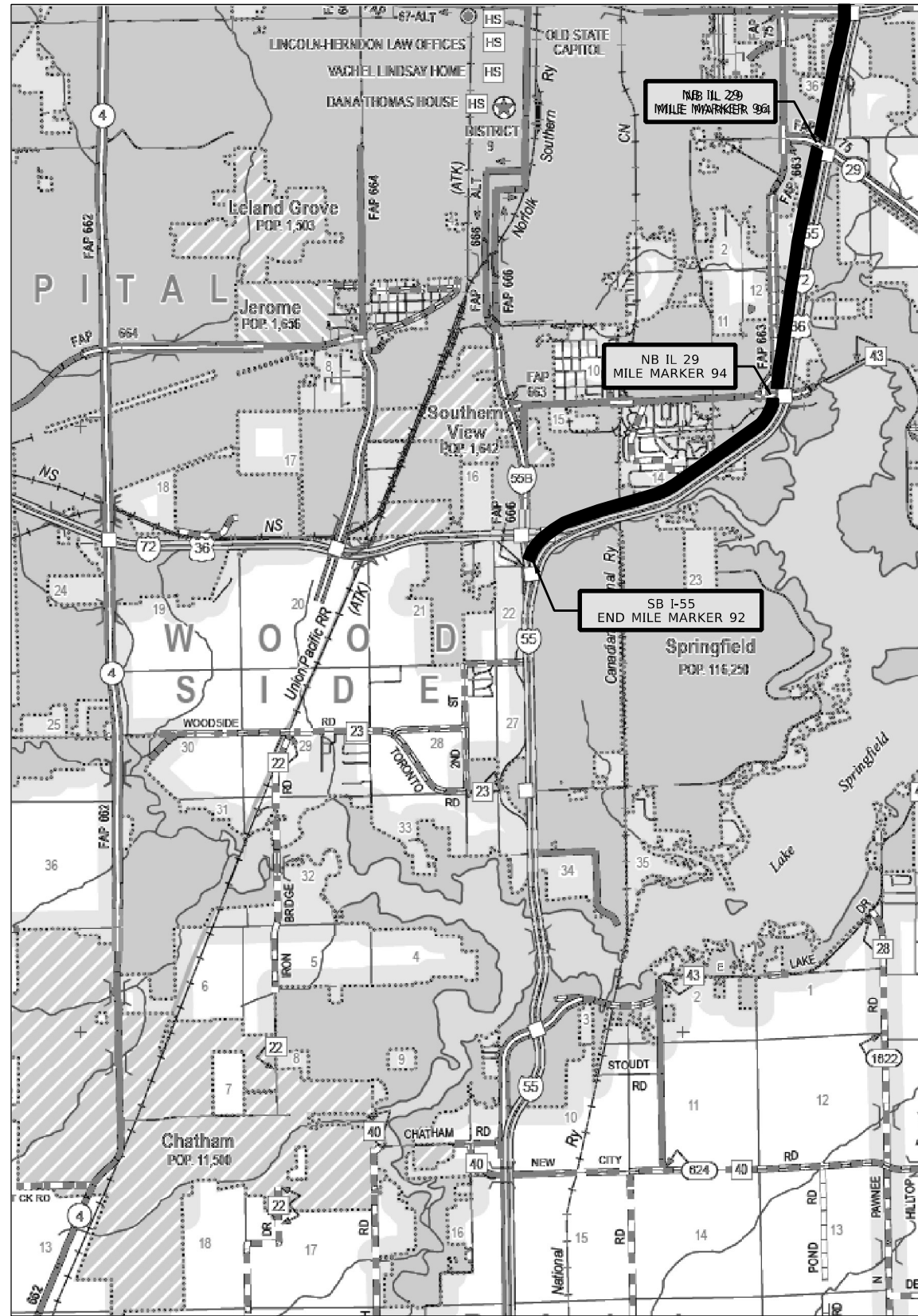
USER NAME = whitlingme	DESIGNED -	REVISED -
	DRAWN -	REVISED -
PLOT SCALE = 40,0000' / in.	CHECKED -	REVISED -
PLOT DATE = 3/22/2021	DATE -	REVISED -

**STATE OF ILLINOIS
DEPARTMENT OF TRANSPORTATION**

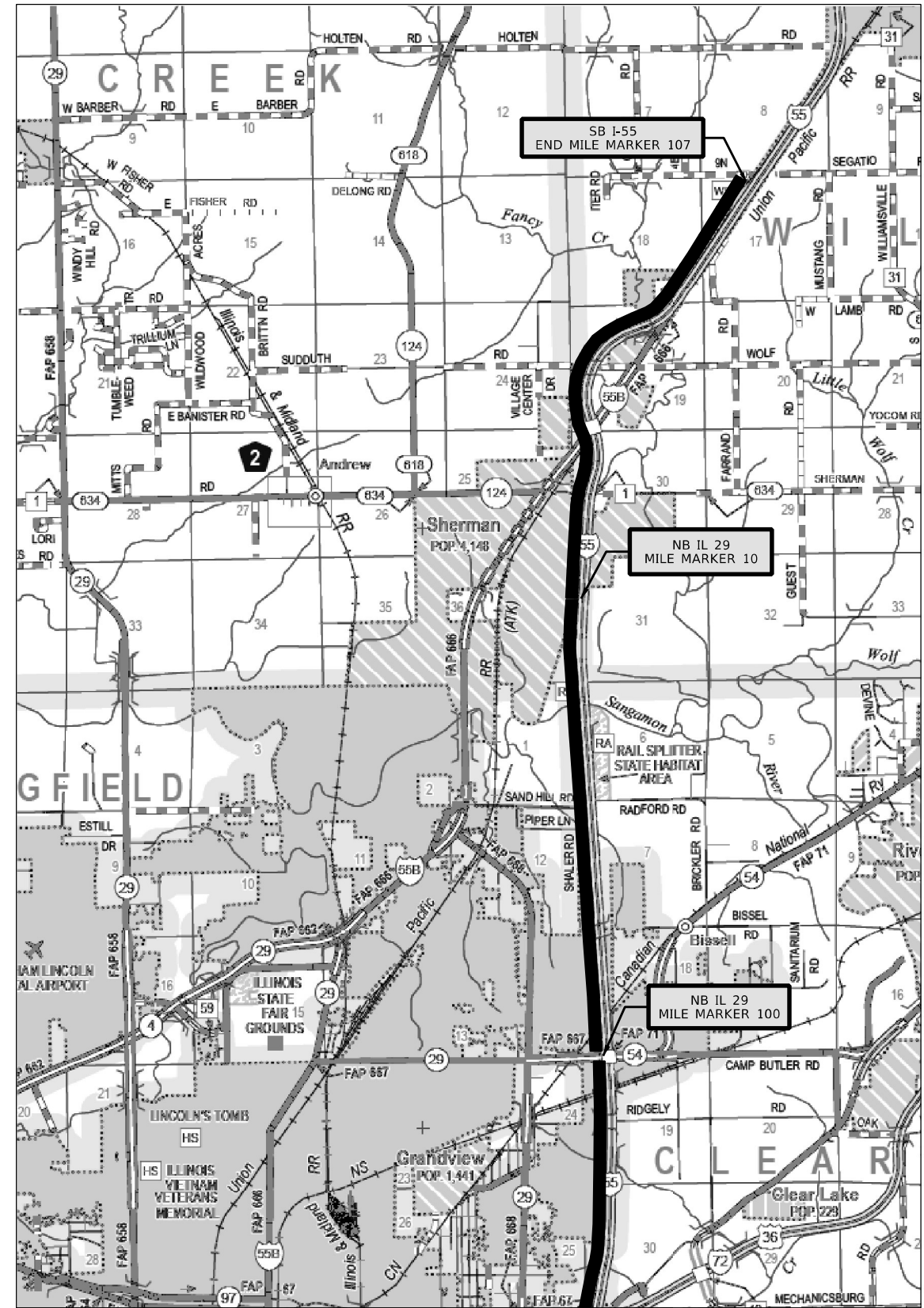
SCALE:		SHEET OF SHEETS		STA. TO STA.		F.A. RTE.		SECTION		COUNTY		TOTAL SHEETS		SHEET NO.	
						I-55 NB - MILE MARKER 88 TO 107		+		SANGAMON		11		8	
												CONTRACT NO. 72M95			
												ILLINOIS FED. AID PROJECT			

* D6 WEED CONTROL SANG CO 2021

MATCHLINE SB I-55 MILE MARKER 98



SB I-55
MILE MARKER 92 TO 98



MATCHLINE SB I-55 MILE MARKER 98

SB I-55
MILE MARKER 98 TO 107

MODEL: I-55 SB SHT 01
 FILE NAME: p:\pub\m95\m95\p\DOT\Documents\DOT Office\District 6\Projects\06272493\CADD\InfoCAD\sheet\06272493-SH-07-tab-55SB.dgn

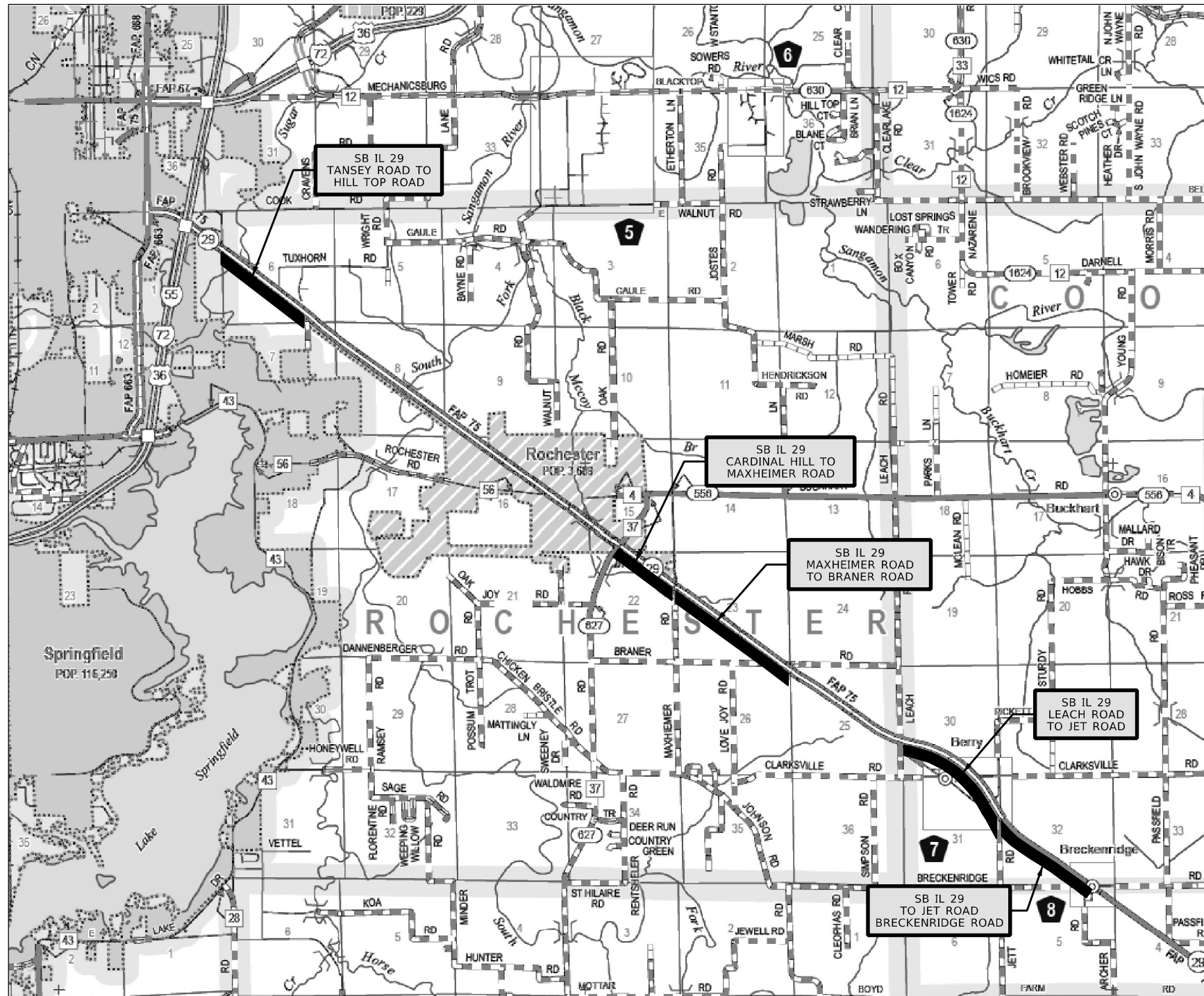
USER NAME = whitlingme	DESIGNED -	REVISED -
	DRAWN -	REVISED -
PLOT SCALE = 40,0000' / in.	CHECKED -	REVISED -
PLOT DATE = 3/22/2021	DATE -	REVISED -

**STATE OF ILLINOIS
DEPARTMENT OF TRANSPORTATION**

PLAN LOCATION			
I-55 SB - MILE MARKER 92 TO 107			
SCALE:	SHEET	OF SHEETS	STA. TO STA.

F.A. RTE.	SECTION	COUNTY	TOTAL SHEETS	SHEET NO.
VAR	*	SANGAMON	11	9
CONTRACT NO. 72M95				
ILLINOIS FED. AID PROJECT				

* D6 WEED CONTROL SANG CO 2021



SOUTHBOUND ILLINOIS 29

**STATE OF ILLINOIS
DEPARTMENT OF TRANSPORTATION**

**PLAN LOCATION
SOUTHBOUND ILLINOIS 29**

SCALE: SHEET OF SHEETS STA. TO STA.

F.A. RTE.	SECTION	COUNTY	TOTAL SHEETS	SHEET NO.
VAR	*	SANGAMON	11	11
			CONTRACT NO. 72M95	

* D6 WEED CONTROL SANG CO 2021

MODEL: SB IL 29
 FILE NAME: P:\pub\barcom\dat\Illinois\pub\PHWDOT\Documents\DOT_Office\District 6\Projects\0672M95\CADD\Info\CADD\sheet\0672M95-SH-09-03a-IL29SB.dgn

USER NAME = whitlingme	DESIGNED -	REVISED -
	DRAWN -	REVISED -
PLOT SCALE = 40,0000' / in.	CHECKED -	REVISED -
PLOT DATE = 3/22/2021	DATE -	REVISED -