

STATE OF ILLINOIS
DEPARTMENT OF TRANSPORTATION

| F.A.I. RTE. | SECTION | COUNTY | TOTAL SHEETS | SHEET NO. |
|-------------|----------|-----------|--------------------|-----------|
| 57 | 25-8RS-1 | EFFINGHAM | 17 | 1 |
| | | ILLINOIS | CONTRACT NO. 74A20 | |

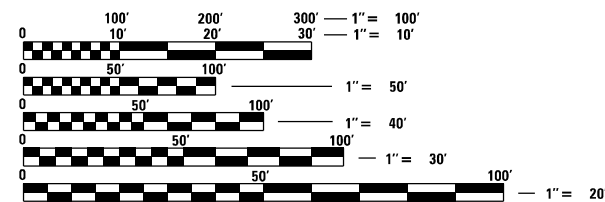
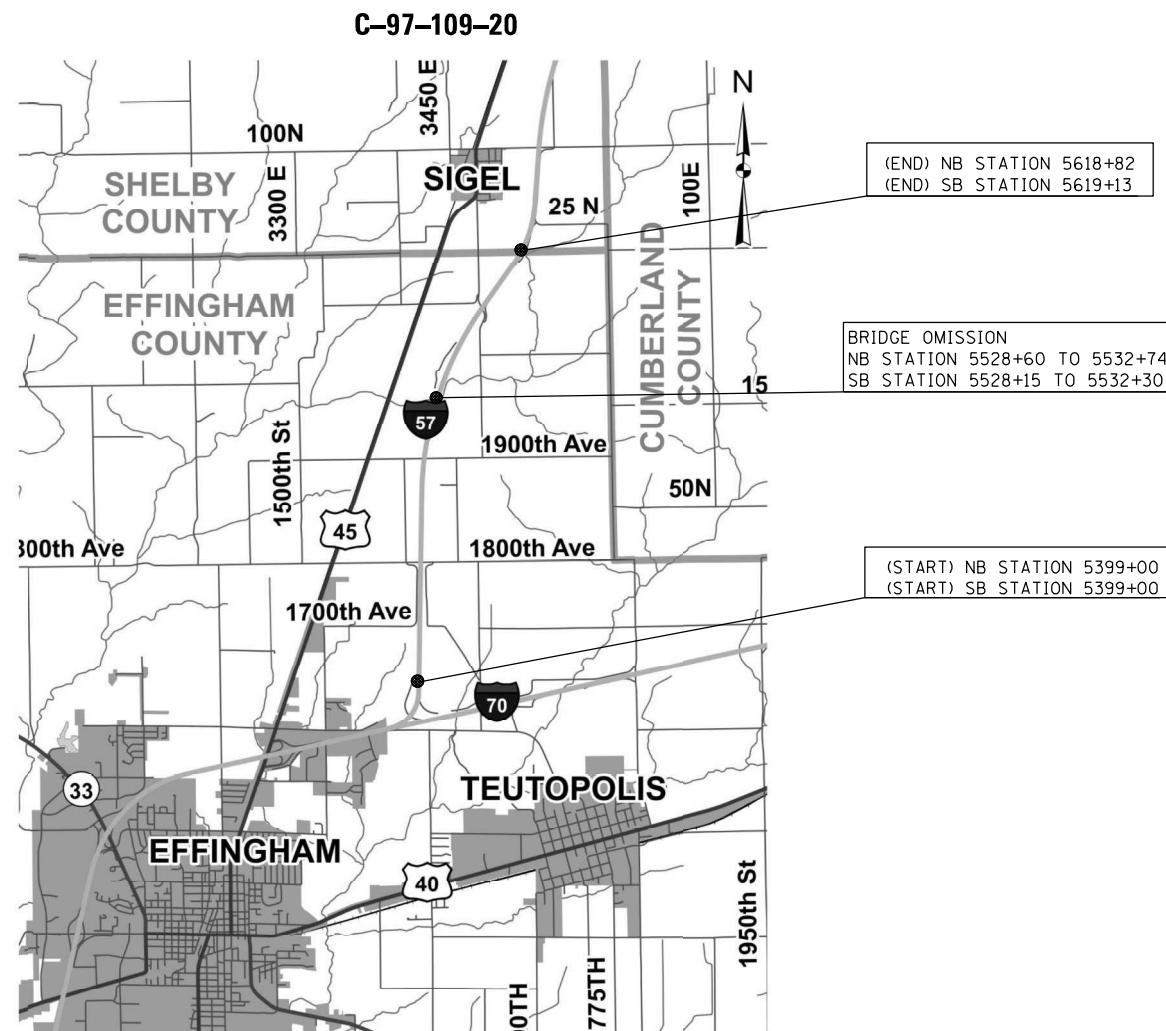
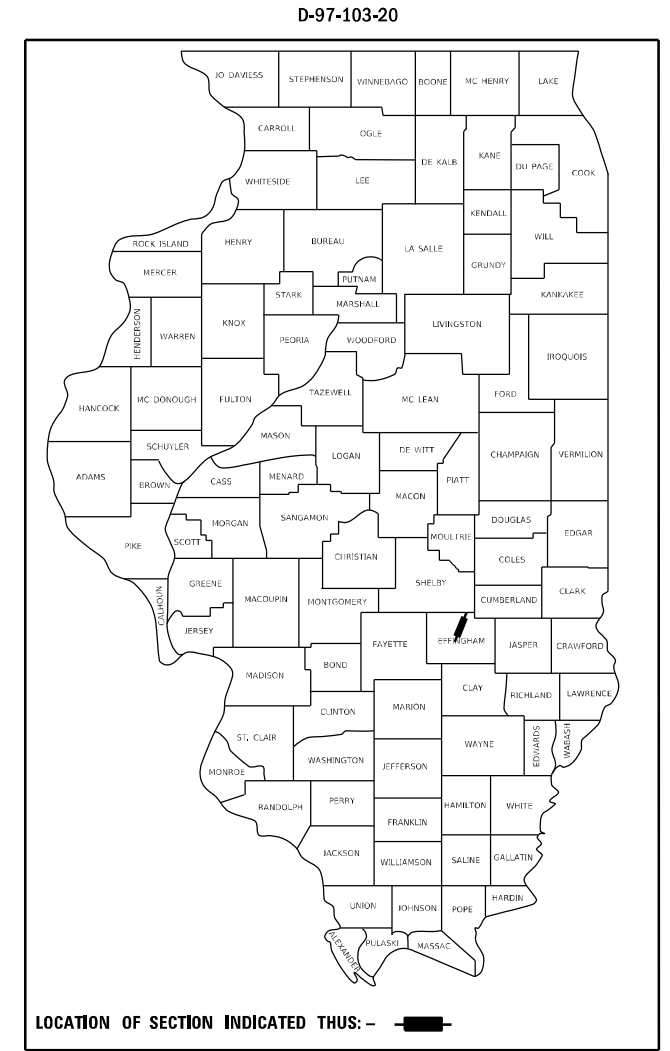
FOR INDEX OF SHEETS, SEE SHEET NO. 2

ADT (2019) = 19,100

STATION EQUATION
SB STATION 5576+13 BK = 5575+29 AH

PROPOSED HIGHWAY PLANS

FAI ROUTE 57A (I-57)
SECTION 25-8RS-1
PROJECT NHPP-2UB0(567)
SMART OVERLAY
EFFINGHAM COUNTY



FULL SIZE PLANS HAVE BEEN PREPARED USING STANDARD ENGINEERING SCALES, REDUCED SIZED PLANS WILL NOT CONFORM TO STANDARD SCALES. IN MAKING MEASUREMENTS ON REDUCED PLANS, THE ABOVE SCALES MAY BE USED.

J.U.L.I.E.
JOINT UTILITY LOCATION INFORMATION FOR EXCAVATORS
1-800-892-0123
OR 811

PROJECT ENGINEER BRIAN LEWIS
PROJECT MANAGER ALEX KREKE/CHRIS WESTENDORF

GROSS LENGTH = 21,982 FT. = 4.163 MILE
NET LENGTH = 21,568 FT. = 4.084 MILE

CONTRACT NO. 74A20

STATE OF ILLINOIS
DEPARTMENT OF TRANSPORTATION

SUBMITTED March 18, 2021

[Signature]
REGIONAL ENGINEER

May 7, 2021
[Signature]
ENGINEER OF DESIGN AND ENVIRONMENT

May 7, 2021
[Signature]
DIRECTOR OF HIGHWAYS PROJECT IMPLEMENTATION

PRINTED BY THE AUTHORITY
OF THE STATE OF ILLINOIS

INDEX OF SHEETS

| SHEET NO. | ITEM |
|-----------|--|
| 1 | COVER SHEET |
| 2 | INDEX OF SHEETS, HIGHWAY STANDARDS AND GENERAL NOTES |
| 3-4 | SUMMARY OF QUANTITIES |
| 5 | TYPICAL CROSS-SECTIONS |
| 6 | SCHEDULE OF QUANTITIES |
| 7-10 | PLAN SHEETS |
| 11-17 | DETAILS |

THE FOLLOWING STANDARDS ARE A PART OF THESE PLANS AND ARE INCLUDED FOLLOWING THE LAST NUMBERED SHEET OF THE PLANS.

| STD. NO. | DESCRIPTION |
|-----------|---|
| 000001-08 | STANDARD SYMBOLS, ABBREVIATIONS, AND PATTERNS |
| 001006 | DECIMAL OF AN INCH AND OF A FOOT |
| 642001-02 | SHOULDER RUMBLE STRIPS, 16 IN |
| 701101-05 | OFF-RD OPERATIONS, MULTILANE, 15' (4.5 M) TO 24" (600 MM) FROM PAVEMENT EDGE |
| 701106-02 | OFF-RD OPERATIONS, MULTILANE, MORE THAN 15' (4.5 M) AWAY |
| 701400-10 | APPROACH TO LANE CLOSURE, FREEWAY/EXPRESSWAY |
| 701401-12 | LANE CLOSURE, FREEWAY/EXPRESSWAY |
| 701426-09 | LANE CLOSURE, MULTILANE, INTERMITTENT OR MOVING OPERATION, FOR SPEEDS GREATER THAN OR EQUAL TO 45 MPH |
| 701428-01 | TRAFFIC CONTROL, SETUP AND REMOVAL, FREEWAY/EXPRESSWAY |
| 701451-05 | RAMP CLOSURE FREEWAY/EXPRESSWAY |
| 701901-08 | TRAFFIC CONTROL DEVICES |
| 780001-05 | TYPICAL PAVEMENT MARKINGS |
| 781001-04 | TYPICAL APPLICATIONS RAISED REFLECTIVE PAVEMENT MARKERS |

SUGGESTED SEQUENCE OF OPERATIONS:

- SET UP TRAFFIC CONTROL TO CLOSE ONE LANE.
- MILL TRAFFIC LANE AND SHOULDER.
- SWITCH TRAFFIC OVER TO THE OTHER LANE.
- MILL THE OTHER LANE AND SHOULDER TO THE STOPPING POINT OF THE ADJACENT MILLING.
- PLACE THE LONGITUDINAL JOINT SEALANT AT THE CENTERLINE.
- PLACE THE SURFACE COURSE IN EACH LANE AND ADJACENT SHOULDER BEFORE DOING THE SAME ON THE OTHER LANE AND SHOULDER.

GENERAL NOTES:

THIS PROJECT IS LOCATED ON FAI ROUTE 57 (I-57) IN EFFINGHAM COUNTY FROM THE NORTH TRI-LEVEL TO THE SHELBY COUNTY LINE NORTH OF EFFINGHAM. THE WORK INCLUDED IN SECTION 25-8RS-1 CONSISTS OF HOT-MIX ASPHALT SURFACE REMOVAL, HOT-MIX ASPHALT RESURFACING, HOT-MIX ASPHALT SHOULDERS, PAVEMENT MARKING, TRAFFIC SURVEILLANCE EQUIPMENT REMOVAL AND REPLACEMENT, AND ANY OTHER WORK NECESSARY TO COMPLETE THE SECTION.

30 DAYS PRIOR TO CLOSING THE REST AREAS THE CONTRACTOR SHALL INFORM THE DISTRICT REST AREA TECHNICIAN, PHIL NOSBISCH (217-342-8276).

WHEN APPLYING SHORT-TERM PAVEMENT MARKINGS, TEMPORARY TAPE SHALL BE USED ON THE SURFACE COURSE AND PAINT SHALL BE USED ON MILLED SURFACES.

THE FOLLOWING RATES OF APPLICATION HAVE BEEN USED IN THE CALCULATION OF PLAN QUANTITIES:

| | |
|---|--------------------|
| BITUMINOUS MATERIALS (TACK COAT) | 0.05 LBS/SQ FT |
| HOT-MIX ASPHALT (OTHER THAN STONE MATRIX ASPHALT) | 112 LBS/SQ YD/INCH |
| HOT-MIX ASPHALT (STONE MATRIX ASPHALT) | 130 LBS/SQ YD/INCH |

THE LONGITUDINAL JOINT SEALANT SHALL BE APPLIED AT THE CENTERLINE OF THE MAINLINE MILLED SURFACE ONLY.

THE FOLLOWING MIXTURE REQUIREMENTS ARE APPLICABLE FOR THIS PROJECT:

| APPLICATION | AC/PG | DESIGN AIR VOIDS | MIXTURE COMPOSITION | FRICTION AGGREGATE | QUALITY MANAGEMENT |
|---|----------|---------------------|------------------------|-----------------------|-----------------------|
| POLYMERIZED HMA SURFACE COURSE, STONE MATRIX ASPHALT, 12.5, MIX "E", N80 (MAINLINE) | PG 76-22 | 4.0% @ N=80 | IL - 12.5 | MIXTURE E | PFP |
| HMA SURFACE COURSE, IL-9.5, MIX "C", N70 (SHOULDERS & CROSSTOVERS) | PG 64-22 | 4.0% @ N=70 | IL - 9.5 | MIXTURE C | QC/QA |

REV. - MS

MODEL: Default
 FILE: M:\GIS\Projects\74A20\Drawings\DOT_Offices\DOT_74A20\Drawings\74A20-shi-gemote.dgn

| | | | | | | | | | | |
|------------------------------|------------|-----------|---|---|--|--------------------|-----------|--------|--------------|-----------|
| USER NAME = steffenmk | DESIGNED - | REVISED - | STATE OF ILLINOIS DEPARTMENT OF TRANSPORTATION | GENERAL NOTES, INDEX OF SHEETS LIST OF STANDARDS | | F.A.I. RTE. | SECTION | COUNTY | TOTAL SHEETS | SHEET NO. |
| DRAWN - | REVISED - | 57 | | | | 25-8RS-1 | EFFINGHAM | 17 | 2 | |
| PLOT SCALE = 100.0000' / in. | CHECKED - | REVISED + | | SCALE: SHEET OF SHEETS STA. TO STA. | | CONTRACT NO. 74A20 | | | | |
| PLOT DATE = 3/18/2021 | DATE - | REVISED + | | ILLINOIS FED. AID PROJECT | | | | | | |

90% FED
10% STATE

90% FED
10% STATE

| SUMMARY OF QUANTITIES | | | TOTAL QUANTITIES | CONSTRUCTION TYPE CODE | | |
|-----------------------|--|--------|------------------|------------------------|--|--|
| CODE NO | ITEM | UNIT | | 0005 | | |
| 40600290 | BITUMINOUS MATERIALS (TACK COAT) | POUND | 85513 | 85513 | | |
| 40600990 | TEMPORARY RAMP | SO YD | 237 | 237 | | |
| 40604052 | HOT-MIX ASPHALT SURFACE COURSE, IL-9.5, MIX "C", N70 | TON | 6711 | 6711 | | |
| 40605034 | POLYMERIZED HOT-MIX ASPHALT SURFACE COURSE, STONE MATRIX ASPHALT, 12.5, MIX "E", N80 | TON | 16868 | 16868 | | |
| 40800050 | INCIDENTAL HOT-MIX ASPHALT SURFACING | TON | 40 | 40 | | |
| 42400100 | PORTLAND CEMENT CONCRETE SIDEWALK 4 INCH | SQ FT | 283.5 | 283.5 | | |
| 44000157 | HOT-MIX ASPHALT SURFACE REMOVAL, 2" | SO YD | 190028 | 190028 | | |
| 64200116 | SHOULDER RUMBLE STRIPS, 16 INCH | FOOT | 83947 | 83947 | | |
| 67000400 | ENGINEER'S FIELD OFFICE, TYPE A | CAL MO | 3 | 3 | | |
| 67100100 | MOBILIZATION | L SUM | 1 | 1 | | |
| 70100800 | TRAFFIC CONTROL AND PROTECTION, STANDARD 701401 | L SUM | 1 | 1 | | |
| 70100820 | TRAFFIC CONTROL AND PROTECTION, STANDARD 701451 | L SUM | 1 | 1 | | |
| 70107025 | CHANGEABLE MESSAGE SIGN | CAL DA | 28 | 28 | | |

| SUMMARY OF QUANTITIES | | | TOTAL QUANTITIES | CONSTRUCTION TYPE CODE | | |
|-----------------------|---|-------|------------------|------------------------|--|--|
| CODE NO | ITEM | UNIT | | 0005 | | |
| 70300100 | SHORT TERM PAVEMENT MARKING | FOOT | 11087 | 11087 | | |
| 70300150 | SHORT TERM PAVEMENT MARKING REMOVAL | SO FT | 3659 | 3659 | | |
| 70300240 | TEMPORARY PAVEMENT MARKING - LINE 6" | FOOT | 83929 | 83929 | | |
| 70300250 | TEMPORARY PAVEMENT MARKING - LINE 8" | FOOT | 687 | 687 | | |
| * 72700100 | STRUCTURAL STEEL SIGN SUPPORT - BREAKAWAY | POUND | 520 | 520 | | |
| * 73400100 | CONCRETE FOUNDATIONS | CU YD | 1.4 | 1.4 | | |
| * 78000400 | THERMOPLASTIC PAVEMENT MARKING - LINE 6" | FOOT | 83929 | 83929 | | |
| * 78000500 | THERMOPLASTIC PAVEMENT MARKING - LINE 8" | FOOT | 687 | 687 | | |
| * 78004230 | PREFORMED PLASTIC PAVEMENT MARKING, TYPE B - INLAID - LINE 6" | FOOT | 10813 | 10813 | | |
| * 78100100 | RAISED REFLECTIVE PAVEMENT MARKER | EACH | 1082 | 1082 | | |
| 78300200 | RAISED REFLECTIVE PAVEMENT MARKER REMOVAL | EACH | 1082 | 1082 | | |
| X0323388 | TRAFFIC COUNTER | EACH | 1 | 1 | | |
| * X7830074 | GROOVING FOR RECESSED PAVEMENT MARKING 7" | FOOT | 83929 | 83929 | | |
| * X7830076 | GROOVING FOR RECESSED PAVEMENT MARKING 9" | FOOT | 687 | 687 | | |

* SPECIALTY ITEM

MODEL: Default
 FILE NAME: p:\pub\harronm\dot\illinc\dot\pww\dot\Documents\DOT_Offices\Distric_7\Projects\7420\CADD\DATA\CAD\Sheet\07420-506.dgn

| | | |
|------------------------------|------------|-----------|
| USER NAME = steffenmk | DESIGNED - | REVISED - |
| | DRAWN - | REVISED - |
| PLOT SCALE = 100,0000' / in. | CHECKED - | REVISED - |
| PLOT DATE = 3/18/2021 | DATE - | REVISED - |

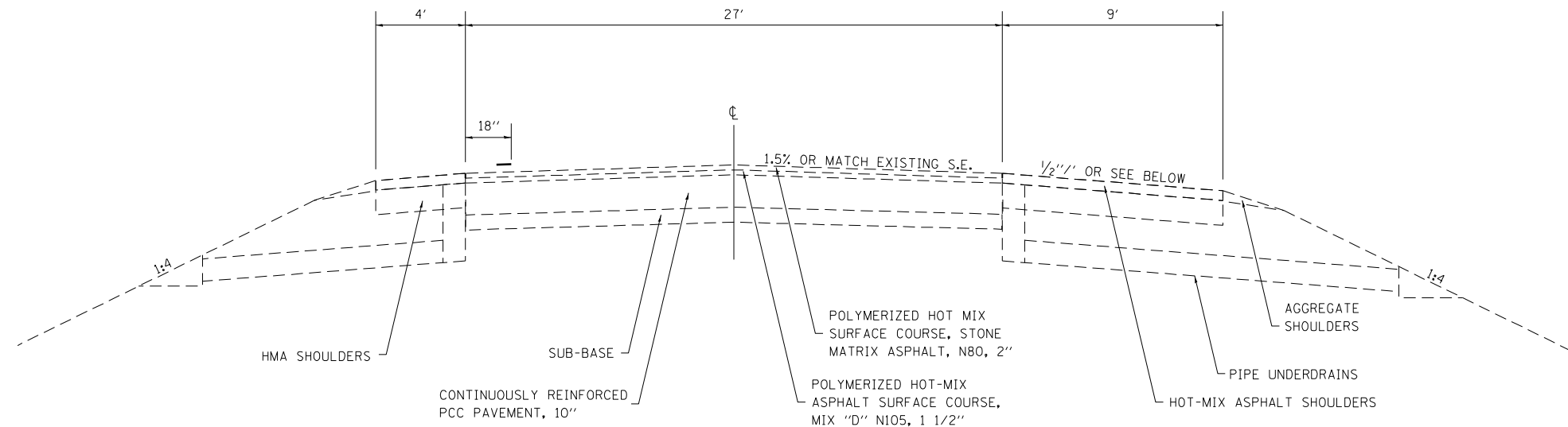
STATE OF ILLINOIS
DEPARTMENT OF TRANSPORTATION

SUMMARY OF QUANTITIES

SCALE: SHEET OF SHEETS STA. TO STA.

| | | | | |
|---------------------------|----------|-----------|--------------|-----------|
| F.A.I. RTE. | SECTION | COUNTY | TOTAL SHEETS | SHEET NO. |
| 57 | 25-8RS-1 | EFFINGHAM | 17 | 3 |
| CONTRACT NO. 74A20 | | | | |
| ILLINOIS FED. AID PROJECT | | | | |

EXISTING CROSS SECTION

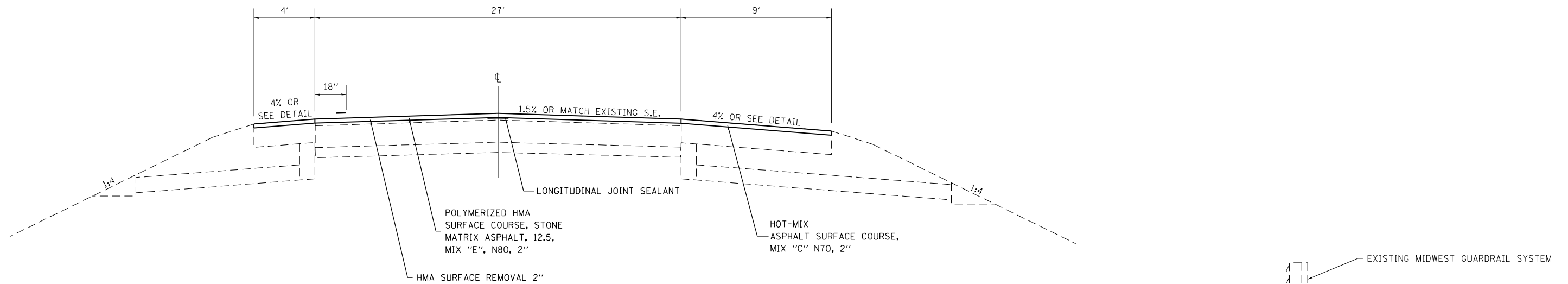


EXISTING MAINLINE TYPICAL SECTION

NORTHBOUND LANE - LOOKING NORTH
 STA 5399+00 TO STA 5528+60
 STA 5528+60 TO STA 5532+74 (BRIDGE OMISSION)
 STA 5532+74 TO STA 5613+00

SOUTHBOUND LANE - LOOKING SOUTH
 STA 5399+00 TO STA 5528+15
 STA 5528+15 TO STA 5532+30 (BRIDGE OMISSION)
 STA 5532+30 TO STA 5576+13
 STA 5575+29 TO STA 5619+13

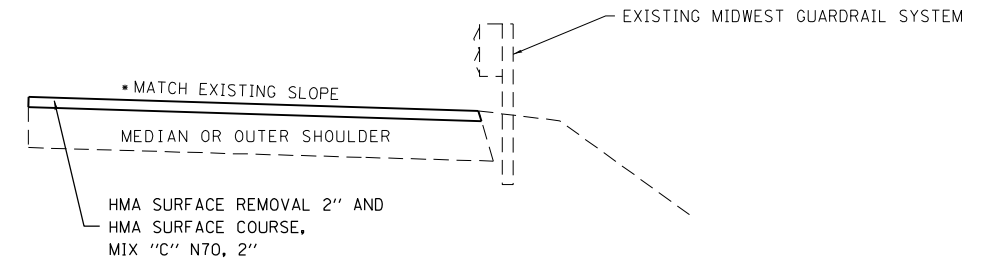
PROPOSED CROSS SECTION



PROPOSED MAINLINE TYPICAL SECTION

NORTHBOUND LANE - LOOKING NORTH
 STA 5399+00 TO STA 5528+60
 STA 5528+60 TO STA 5532+74 (BRIDGE OMISSION)
 STA 5532+74 TO STA 5613+00

SOUTHBOUND LANE - LOOKING SOUTH
 STA 5399+00 TO STA 5528+15
 STA 5528+15 TO STA 5532+30 (BRIDGE OMISSION)
 STA 5532+30 TO STA 5576+13
 STA 5575+29 TO STA 5619+13



MODEL: Default
 FILE NAME: p:\pub\amr\room.dwt\illinois.gov\PWIDOT\Documents\DOT_Offices\District_7\Projects\74A20\CADD\Drawings\74A20-CH-TYPICAL.dgn

| | | |
|-----------------------------|------------|-----------|
| USER NAME = steffenmk | DESIGNED - | REVISED - |
| | DRAWN - | REVISED - |
| PLOT SCALE = 40,0000 */ in. | CHECKED - | REVISED - |
| PLOT DATE = 3/18/2021 | DATE - | REVISED - |

STATE OF ILLINOIS
 DEPARTMENT OF TRANSPORTATION

TYPICAL SECTIONS

SCALE: SHEET OF SHEETS STA. TO STA.

| F.A.I. RTE. | SECTION | COUNTY | TOTAL SHEETS | SHEET NO. |
|---------------------------|----------|-----------|--------------|-----------|
| 57 | 25-8RS-1 | EFFINGHAM | 17 | 5 |
| CONTRACT NO. 74A20 | | | | |
| ILLINOIS FED. AID PROJECT | | | | |

| PAVING SCHEDULE | | | | | | | | | | | | | | | | |
|------------------------------|------------|----|------------|---------|-------|-----------|-------------------------------------|----------------------------------|--------------------------------------|--|--|--------------------------------|---------------------------|---|-----------------------------------|----------------|
| LANE | STATION | TO | STATION | LENGTH | WIDTH | AREA | HOT-MIX ASPHALT SURFACE REMOVAL, 2" | BITUMINOUS MATERIALS (TACK COAT) | INCIDENTAL HOT-MIX ASPHALT SURFACING | POLYMERIZED HOT-MIX ASPHALT SURFACE COURSE, STONE MATRIX | HOT-MIX ASPHALT SURFACE COURSE, IL-9.5, MIX "C", N70 | SHOULDER RUMBLE STRIPS, 16INCH | LOGITUDINAL JOINT SEALANT | RAISED REFLECTIVE PAVEMENT MARKER REMOVAL | RAISED REFLECTIVE PAVEMENT MARKER | TEMPORARY RAMP |
| | | | | FOOT | FOOT | SQ FT | SQ YD | LB | TON | TON | TON | FOOT | FOOT | EACH | EACH | SQ YD |
| NB | 5399+00.00 | | 5500+55.00 | 10155.0 | 40.0 | 406200.0 | 45133.33 | 20310.0 | - | 3960.5 | 1642.9 | 20310.0 | | | | 29.6 |
| NB OFF Ramp | 5500+55.00 | | 5506+36.00 | 581.0 | 31.0 | 18011.0 | 2001.22 | 900.6 | - | 226.6 | 28.9 | 581.0 | | | | - |
| NB | 5506+36.00 | | 5523+06.00 | 1670.0 | 40.0 | 66800.0 | 7422.22 | 3340.0 | - | 651.3 | 270.2 | 3340.0 | 12960.0 | 324.0 | 324.0 | - |
| NB ON RAMP | 5523+06.00 | | 5528+60.00 | 554.0 | 31.0 | 17174.0 | 1908.22 | 858.7 | - | 216.1 | 27.6 | 554.0 | | | | - |
| Bridge Omission | 5528+60.00 | | 5532+74.00 | 414.0 | - | - | - | - | - | - | - | - | - | - | - | 59.3 |
| NB | 5532+74.00 | | 5618+82.00 | 8608.0 | 40.0 | 344320.0 | 38257.8 | 17216.0 | - | 3357.1 | 1392.6 | 17216.0 | 8608.0 | 215.0 | 215.0 | 29.6 |
| SB | 5399+00.00 | | 5528+15.00 | 12915.0 | 40.0 | 516600.0 | 57400.0 | 25830.0 | - | 5036.9 | 2089.4 | 25830.0 | 12915.0 | 323.0 | 323.0 | 29.6 |
| Bridge Omission | 5528+15.00 | | 5532+30.00 | 415.0 | - | - | - | - | - | - | - | - | - | - | - | 59.3 |
| SB ON RAMP | 5532+30.00 | | 5539+78.00 | 748.0 | 31.0 | 23188.0 | 2576.4 | 1159.4 | - | 291.7 | 37.2 | 748.0 | | | | - |
| SB | 5539+78.00 | | 5556+86.00 | 1708.0 | 40.0 | 68320.0 | 7591.1 | 3416.0 | - | 666.1 | 276.3 | 3416.0 | 4383.0 | 110.0 | 110.0 | - |
| SB OFF RAMP | 5556+86.00 | | 5563+56.00 | 670.0 | 31.0 | 20770.0 | 2307.8 | 1038.5 | - | 261.3 | 33.4 | 670.0 | | | | - |
| SB | 5563+56.00 | | 5576+13.00 | 1257.0 | 40.0 | 50280.0 | 5586.7 | 2514.0 | - | 490.2 | 203.4 | 2514.0 | | | | - |
| Station EQ | 5576+13.00 | | 5575+29.00 | - | - | - | - | - | - | - | - | - | - | - | - | - |
| SB | 5575+29.00 | | 5619+13.00 | 4384.0 | 40.0 | 175360.0 | 19484.4 | 8768.0 | - | 1709.8 | 709.2 | 8768.0 | 4384.0 | 110.0 | 110.0 | 29.6 |
| Crossover at Station 5415+60 | | | | - | - | 1616.0 | 179.6 | 80.8 | 20.1 | - | - | - | - | - | - | - |
| Crossover at Station 5610+40 | | | | - | - | 1616.0 | 179.6 | 80.8 | 20.1 | - | - | - | - | - | - | - |
| NB Total | | | | 21982.0 | - | 852505.0 | 94722.8 | 42625.3 | 0.0 | 8411.6 | 3362.2 | 42001.0 | 21568.0 | 539.0 | 539.0 | 118.5 |
| SB Total | | | | 22097.0 | - | 854518.0 | 94946.4 | 42725.9 | 0.0 | 8456.0 | 3348.9 | 41946.0 | 21682.0 | 543.0 | 543.0 | 118.5 |
| JOB TOTAL | | | | 44079.0 | - | 1710255.0 | 190028.0 | 85513.0 | 40.0 | 16868.0 | 6711.0 | 83947.0 | 43250.0 | 1082.0 | 1082.0 | 237.0 |

| PAVEMENT MARKING SCHEDULE | | | | | | | | | | | | | | |
|---------------------------|----|------------|---------|-----------------------------|-------------------------------------|--|---|--|---|--|---|--|---|--|
| STATION | TO | STATION | LENGTH | SHORT TERM PAVEMENT MARKING | SHORT TERM PAVEMENT MARKING REMOVAL | TEMPORARY PAVEMENT MARKING - LINE 6" (WHITE) | TEMPORARY PAVEMENT MARKING - LINE 6" (YELLOW) | TEMPORARY PAVEMENT MARKING - LINE 8" (WHITE) | TEMPORARY PAVEMENT MARKING - LINE 8" (YELLOW) | TEMPORARY PAVEMENT MARKING - LINE 6" (WHITE) | TEMPORARY PAVEMENT MARKING - LINE 6" (YELLOW) | TEMPORARY PAVEMENT MARKING - LINE 8" (WHITE) | TEMPORARY PAVEMENT MARKING - LINE 8" (YELLOW) | TEMPORARY PAVEMENT MARKING - LINE 6" (WHITE) |
| NORTH BOUND | | | FOOT | FOOT | SQ FT | FOOT | FOOT | FOOT | FOOT | FOOT | FOOT | FOOT | FOOT | FOOT |
| 5399+00.00 | | 5500+55.00 | 10155.0 | 2640.3 | 871.3 | 10155.0 | 10155.0 | - | 10155.0 | 10155.0 | - | 2538.8 | 20310.0 | - |
| 5500+55.00 | | 5502+76.00 | 221.0 | 39.8 | 13.1 | - | 221.0 | - | 221.0 | - | - | 55.3 | 221.0 | - |
| 5502+76.00 | | 5506+06.00 | 330.0 | 85.8 | 28.3 | - | 330.0 | 330.0 | - | 330.0 | 330.0 | 82.5 | 330.0 | 330.0 |
| 5506+06.00 | | 5522+06.00 | 1600.0 | 416.0 | 137.3 | 1600.0 | 1600.0 | - | 1600.0 | 1600.0 | - | 400.0 | 3200.0 | - |
| 5522+06.00 | | 5528+60.00 | 654.0 | 117.7 | 38.8 | - | 654.0 | - | 654.0 | - | - | 163.5 | 654.0 | - |
| 5528+60.00 | | 5532+74.00 | 414.0 | Bridge Omission | | | | | | | | | | |
| 5532+74.00 | | 5618+82.00 | 8608.0 | 2238.1 | 738.6 | 8608.0 | 8608.0 | - | 8608.0 | 8608.0 | - | 2152.0 | 17216.0 | - |
| SOUTH BOUND | | | FOOT | FOOT | SQ FT | FOOT | FOOT | FOOT | FOOT | FOOT | FOOT | FOOT | FOOT | FOOT |
| 5399+00.00 | | 5528+15.00 | 12915.0 | 3357.9 | 1108.1 | 12915.0 | 12915.0 | - | 12915.0 | 12915.0 | - | 3228.8 | 25830.0 | - |
| 5528+15.00 | | 5532+30.00 | 415.0 | Bridge Omission | | | | | | | | | | |
| 5532+30.00 | | 5539+78.00 | 748.0 | 134.6 | 44.4 | - | 748.0 | - | 748.0 | - | - | 187.0 | 748.0 | - |
| 5539+78.00 | | 5557+38.00 | 1760.0 | 457.6 | 151.0 | 1760.0 | 1760.0 | - | 1760.0 | 1760.0 | - | 440.0 | 3520.0 | - |
| 5557+38.00 | | 5560+95.00 | 357.0 | 64.3 | 21.2 | - | 357.0 | 357.0 | - | 357.0 | 357.0 | 89.3 | 357.0 | 357.0 |
| 5560+95.00 | | 5563+56.00 | 261.0 | 67.9 | 22.4 | - | 261.0 | - | 261.0 | - | - | 65.3 | 261.0 | - |
| 5563+56.00 | | 5576+13.00 | 1257.0 | 326.8 | 107.9 | 1257.0 | 1257.0 | - | 1257.0 | 1257.0 | - | 314.3 | 2514.0 | - |
| 5576+13.00 | | 5575+29.00 | - | Station Equation | | | | | | | | | | |
| 5575+29.00 | | 5619+13.00 | 4384.0 | 1139.8 | 376.1 | 4384.0 | 4384.0 | - | 4384.0 | 4384.0 | - | 1096.0 | 8768.0 | - |
| NORTH BOUND TOTAL | | | 21982.0 | 5537.7 | 1827.4 | 20363.0 | 21568.0 | 330.0 | 20363.0 | 21568.0 | 330.0 | 5392.1 | 41931.0 | 330.0 |
| SOUTH BOUND TOTAL | | | 22097.0 | 5548.9 | 1831.1 | 20316.0 | 21682.0 | 357.0 | 20316.0 | 21682.0 | 357.0 | 5420.7 | 41998.0 | 357.0 |
| TOTAL | | | 44079.0 | 11087.0 | 3659.0 | 40679.0 | 43250.0 | 687.0 | 40679.0 | 43250.0 | 687.0 | 10813.0 | 83929.0 | 687.0 |

MODEL: Default
 FILE NAME: p:\pub\mroom.dwg
 ILLINOIS DOT
 PROJECT: 74A20
 OFFICE: DISTRICT 7
 PROJECT: 74A20
 CAD: DATA
 CAD: SHEETS: D774A20-PC-SCHEDULE.dwg

| | | |
|-------------------------------|------------|-----------|
| USER NAME = stefenmk | DESIGNED - | REVISED - |
| | DRAWN - | REVISED - |
| PLOT SCALE = 100,0000 ' / in. | CHECKED - | REVISED - |
| PLOT DATE = 3/18/2021 | DATE - | REVISED - |

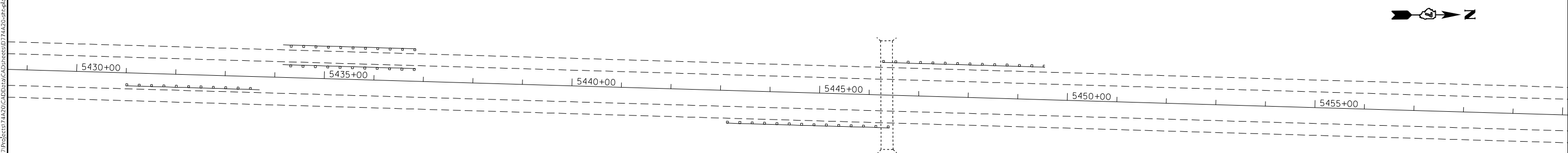
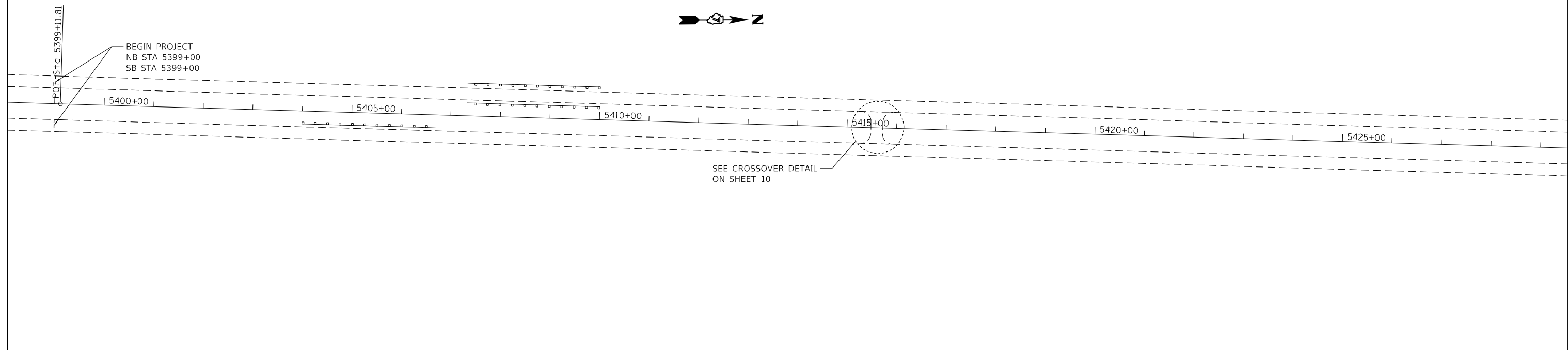
**STATE OF ILLINOIS
DEPARTMENT OF TRANSPORTATION**

SCHEDULES OF QUANTITIES

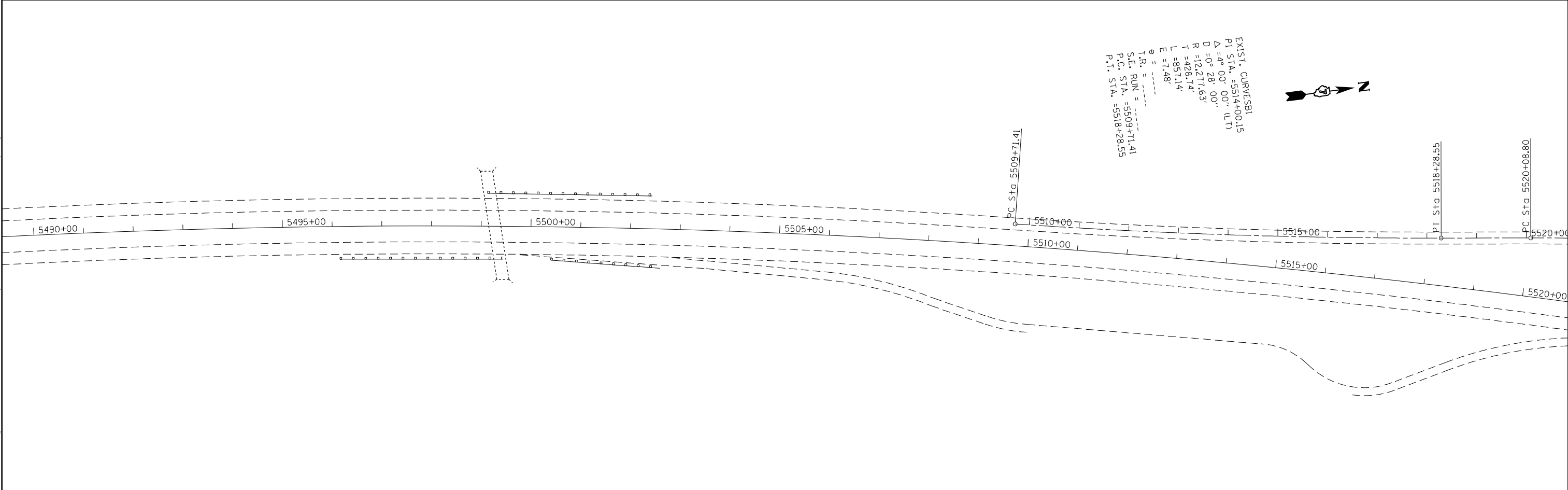
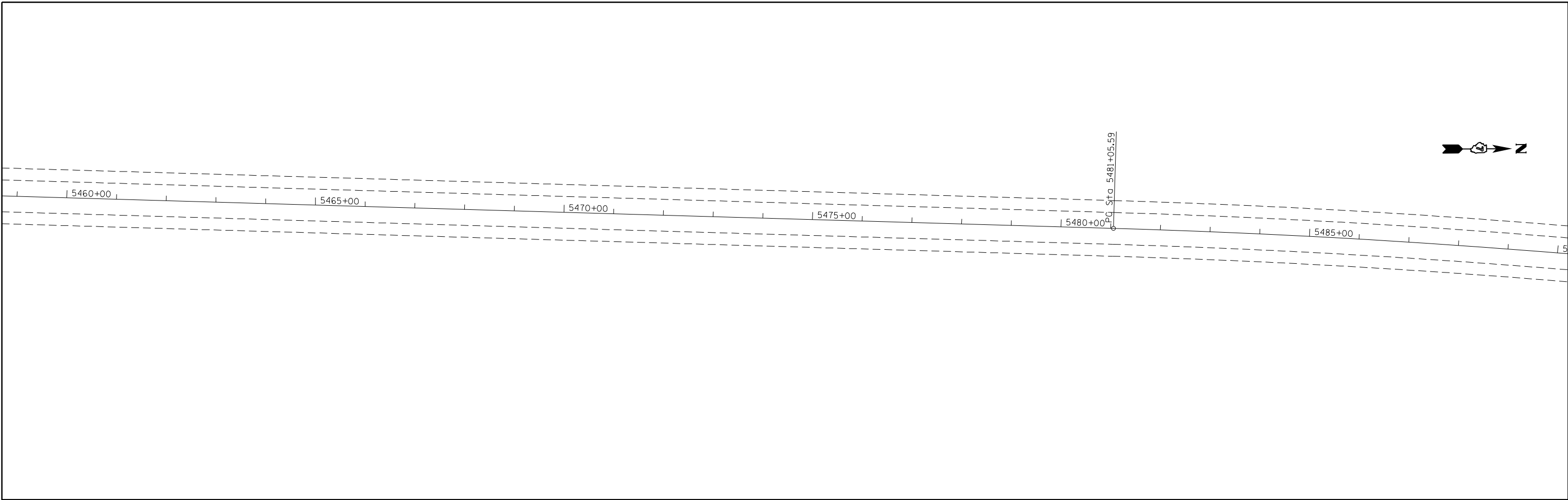
SCALE: SHEET OF SHEETS STA. TO STA.

| F.A.I. RTE. | SECTION | COUNTY | TOTAL SHEETS | SHEET NO. |
|--------------------|----------|------------------|--------------|-----------|
| 57 | 25-8RS-1 | EFFINGHAM | 17 | 6 |
| CONTRACT NO. 74A20 | | | | |
| ILLINOIS | | FED. AID PROJECT | | |

MODEL: Default
 FILE NAME: p:\pub\harronm.dwt\illinois.gov\PWIDOT\Documents\DOT_Offices\District 7\Projects\74A20\CADD\Drawings\74A20-CH-PLAN.dgn



| | | | | | | | | | | |
|--|------------|-----------|---|-------------------|---------------------|------------------------------|---|------------------|-----------------|-------------|
| USER NAME = steffenmk PLOT SCALE = 200,0000' / in. PLOT DATE = 3/18/2021 | DESIGNED - | REVISED - | STATE OF ILLINOIS DEPARTMENT OF TRANSPORTATION | PLAN SHEET | | F.A.I. RTE. 57 | SECTION 25-8RS-1 | COUNTY EFFINGHAM | TOTAL SHEETS 17 | SHEET NO. 7 |
| | DRAWN - | REVISED - | | SCALE: | SHEET 1 OF 4 SHEETS | STA. 5400+00 TO STA. 5460+00 | CONTRACT NO. 74A20 ILLINOIS FED. AID PROJECT | | | |
| CHECKED - | REVISED - | | | | | | | | | |
| DATE - | REVISED - | | | | | | | | | |



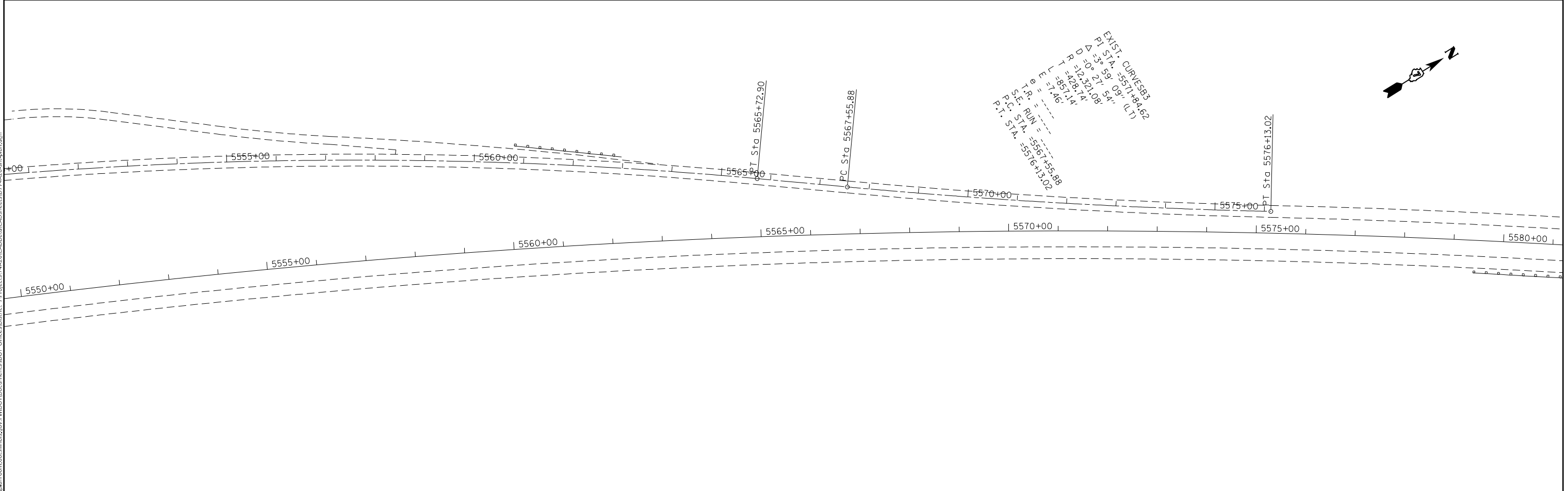
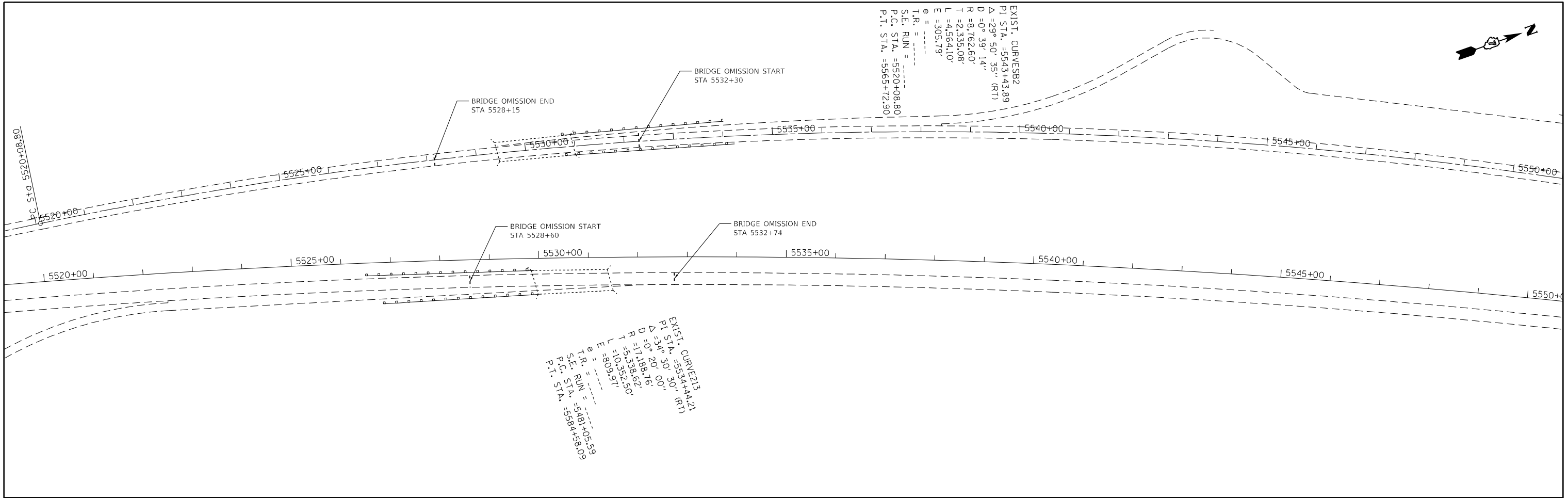
MODEL: Default
 FILE NAME: p:\pub\mroom.dwt\illinois.gov\PWIDOT\Documents\DOT_Offices\Distref_7\Projects\74A20\CADD\Drawings\Sheet\74A20-Plan.dwg

| | | |
|------------------------------|------------|-----------|
| USER NAME = steffenmk | DESIGNED - | REVISED - |
| | DRAWN - | REVISED - |
| PLOT SCALE = 200,0000' / in. | CHECKED - | REVISED - |
| PLOT DATE = 3/18/2021 | DATE - | REVISED - |

STATE OF ILLINOIS
DEPARTMENT OF TRANSPORTATION

| | | | |
|-------------------|---------------------|------------------------------|--|
| PLAN SHEET | | | |
| SCALE: | SHEET 2 OF 4 SHEETS | STA. 5460+00 TO STA. 5520+00 | |

| | | | | |
|---------------------------|----------|-----------|--------------|-----------|
| F.A.I. RTE. | SECTION | COUNTY | TOTAL SHEETS | SHEET NO. |
| 57 | 25-8RS-1 | EFFINGHAM | 17 | 8 |
| CONTRACT NO. 74A20 | | | | |
| ILLINOIS FED. AID PROJECT | | | | |



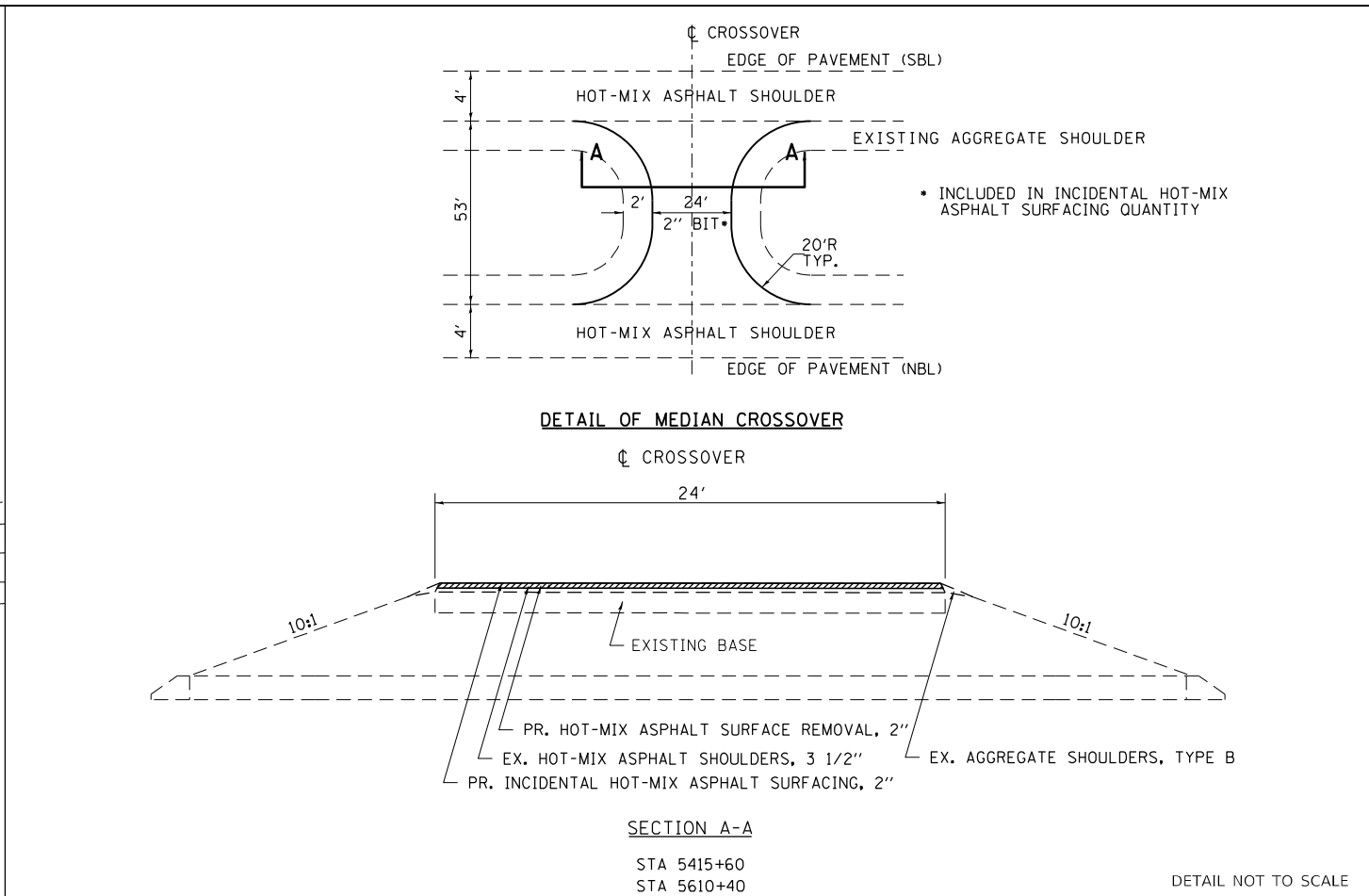
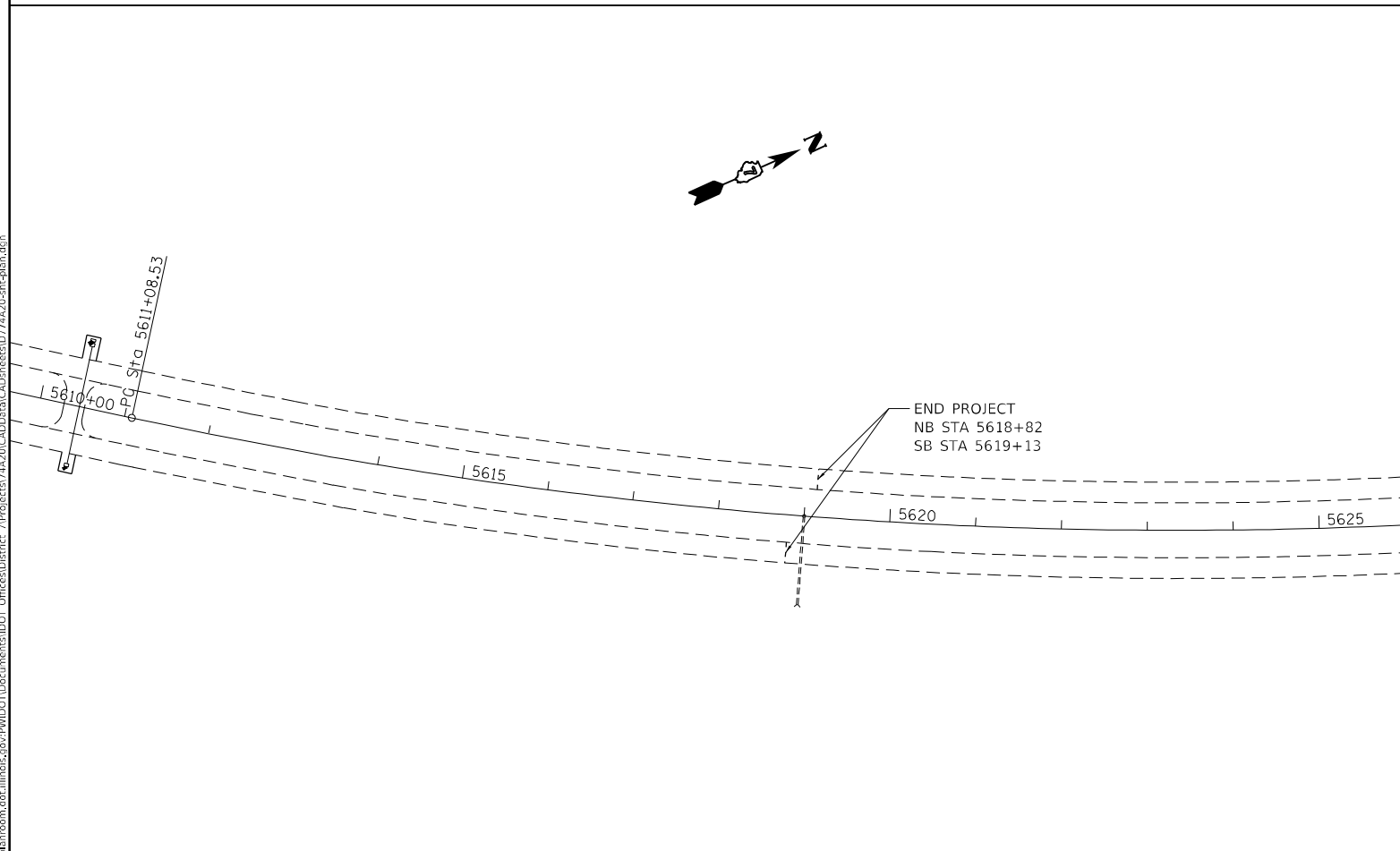
MODEL: Default
 FILE NAME: p:\pub\mroom.dwg
 PROJECT: 74A20\CADD\Drawings\DOT Office\Drawings\74A20\ch.dwg

| | | |
|------------------------------|------------|-----------|
| USER NAME = steffenmk | DESIGNED - | REVISED - |
| DRAWN - | REVISED - | |
| PLOT SCALE = 200,0000' / in. | CHECKED - | REVISED - |
| PLOT DATE = 3/18/2021 | DATE - | REVISED - |

STATE OF ILLINOIS
DEPARTMENT OF TRANSPORTATION

| | | | |
|-------------------|--------------|-----------------|--------|
| PLAN SHEET | | | |
| SCALE: | SHEET 3 | OF 4 | SHEETS |
| | STA. 5520+00 | TO STA. 5580+00 | |

| | | | | |
|---------------------------|----------|-----------|--------------|-----------|
| F.A.I. RTE. | SECTION | COUNTY | TOTAL SHEETS | SHEET NO. |
| 57 | 25-8R5-1 | EFFINGHAM | 17 | 9 |
| CONTRACT NO. 74A20 | | | | |
| ILLINOIS FED. AID PROJECT | | | | |



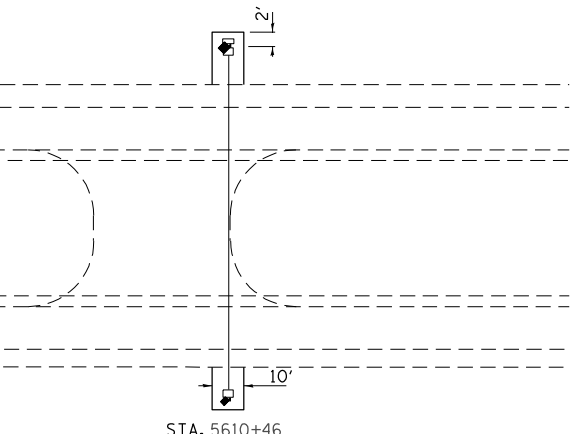
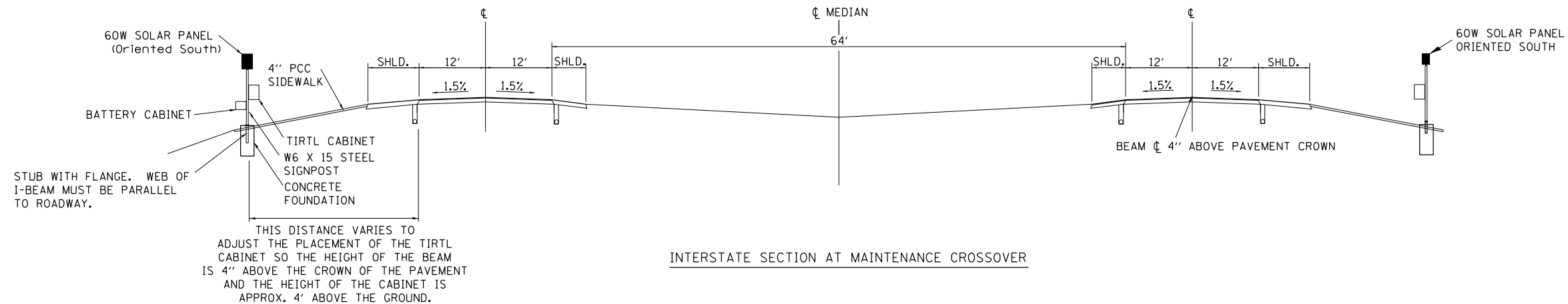
MODEL: Default
 FILE NAME: p:\pub\amr\room.dwg
 PROJECT: 7420\CADD\Drawings\DOT_Office\Drawings\7420\Drawings\7420-11.dwg

| | | |
|------------------------------|------------|-----------|
| USER NAME = steffenmk | DESIGNED - | REVISED - |
| | DRAWN - | REVISED - |
| PLOT SCALE = 200,0000' / in. | CHECKED - | REVISED - |
| PLOT DATE = 3/18/2021 | DATE - | REVISED - |

**STATE OF ILLINOIS
DEPARTMENT OF TRANSPORTATION**

| | | | |
|-------------------|--------------|---------|---------|
| PLAN SHEET | | | |
| SCALE: | SHEET 4 | OF 4 | SHEETS |
| | STA. 5580+00 | TO STA. | 5640+00 |

| | | | | |
|---------------------------|----------|-----------|--------------|-----------|
| F.A.I. RTE. | SECTION | COUNTY | TOTAL SHEETS | SHEET NO. |
| 57 | 25-8RS-1 | EFFINGHAM | 17 | 10 |
| CONTRACT NO. 74A20 | | | | |
| ILLINOIS FED. AID PROJECT | | | | |



Weed Barrier - PCC concrete shall be placed as shown 8' to 10' wide and 4" thick running from 2' behind post to post.

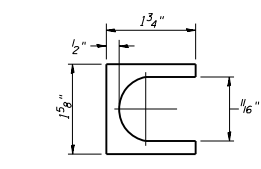
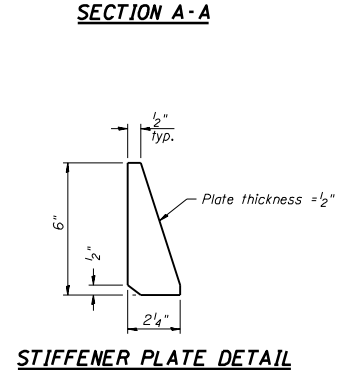
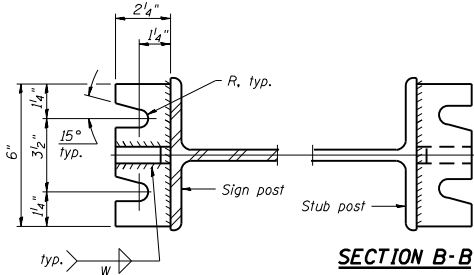
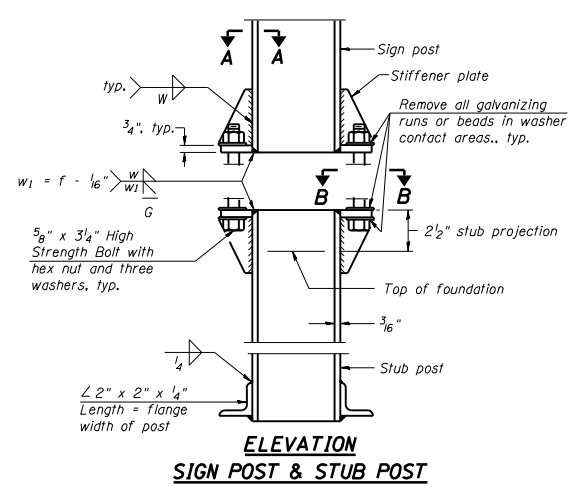
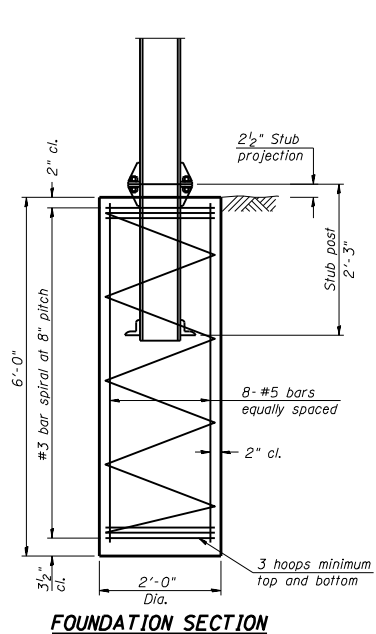
INTERSTATE SECTION AT MAINTENANCE CROSSOVER

TIRTL TRAFFIC COUNTER SCHEDULE OF QUANTITIES (FOR INFORMATION ONLY)

| CODE NUMBER | ITEM | UNIT | QUANTITY |
|--|--|-------|----------|
| 42400100 | PORTLAND CEMENT CONCRETE SIDEWALK 4 INCH | SQ FT | 283.5 |
| 72700100 | STRUCTURAL STEEL SIGN SUPPORT - BREAKAWAY | POUND | 520 |
| 73400100 | CONCRETE FOUNDATIONS | CU YD | 1.4 |
| X0323388 | TRAFFIC COUNTER (INCLUDES ITEMS BELOW) | EACH | 1 |
| TIRTL TRAFFIC DATA COLLECTION SYSTEM INCLUDES: | | | |
| | Sierra Wireless GX-450 Mobile 4G XLTE Gateway EVD0-Verizon | EACH | 1 |
| | Panorama Low Profile LTE MiMo LGAM-BC3G-26-3SP Antenna | EACH | 1 |
| | TIRTL CABINET 15" X 27" X 16" | EACH | 2 |
| | BATTERY CABINET 16.5" X 16" X 11.5" BBAIM w/ #2 Police Lock | EACH | 1 |
| | SOLAR PANEL 60 W 12 VDC with Bracket | EACH | 2 |
| | TIRTL TRAFFIC COUNTER | EACH | 1 |
| | SUNSAVER SOLAR CHARGE REGULATOR 10 AMP 12 VDC | EACH | 2 |
| | BATTERY - 33 AH ABSORBED ELECTROLYTE 8" X 5.5" X 7" (DEEP CYCLE) | EACH | 1 |
| | BATTERY - 104AH ABSORBED ELECTROLYTE 10" X 6" X 8" (DEEP CYCLE) | EACH | 1 |

NOTES:

- SYSTEM CONSISTS OF TWO W6 X 15 I-BEAM SIGNPOSTS WITH CONCRETE FOUNDATION AND A FLANGE WITH BREAKAWAY BOLTS
- THE I-BEAMS ARE 12' LONG AND DRILLED AS PER THE I-BEAM DETAIL TO ACCOMMODATE A PIPE TO ALLOW THE MOUNTING OF THE SOLAR PANEL.
- THE WEB OF THE I-BEAM IS TO BE PLACED PARALLEL TO THE LANES.
- THE TWO POSTS MUST BE PLACED DIRECTLY ACROSS FROM EACH OTHER AND PERPENDICULAR TO THE LANES.
- TWO POSTS ARE REQUIRED LOCATED AS PER THE ENGINEER AND DRAWING.
- THE CABINETS ARE ATTACHED TO THE I-BEAM USING 8" GALVANIZED J-BOLTS.
- THE BOTTOM OF THE CABINET HEIGHT MUST BE NO LOWER THAN 4' ABOVE THE GROUND AND BE ABLE TO VIEW ACROSS ALL LANES AT THE CROWN OF THE PAVEMENT.
- THE IDOT OFFICE OF PLANNING AND PROGRAMMING DATA MANAGEMENT LAB (RAMON TAYLOR or RICH MARX 217-782-2065) SHALL BE NOTIFIED TWO WEEKS PRIOR TO THE LAYOUT AND SHALL BE PRESENT DURING THE PLACEMENT OF THE POST FOUNDATIONS.



SHIM DETAIL
Furnish two 0.01" thick and two 0.03" thick stainless steel or brass (ASTM B36) shims per post.

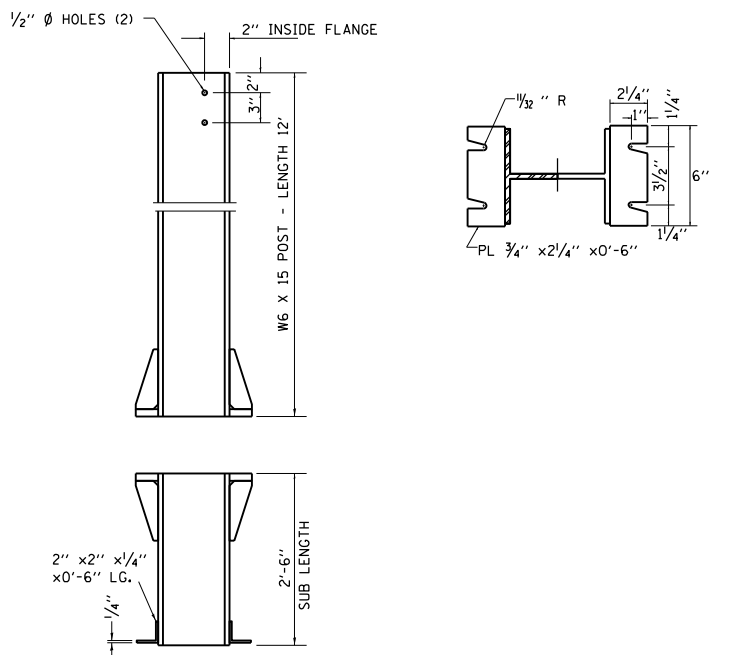
GENERAL NOTES

Posts shall be plumbed by using shims with post-to-stub post connection bolts snug tight only. Final tightening of all High Strength Bolts shall be in accordance with Article 727.05 and threads at the junction of the bolt and nut shall be burred or center punched to prevent the nut from loosening.

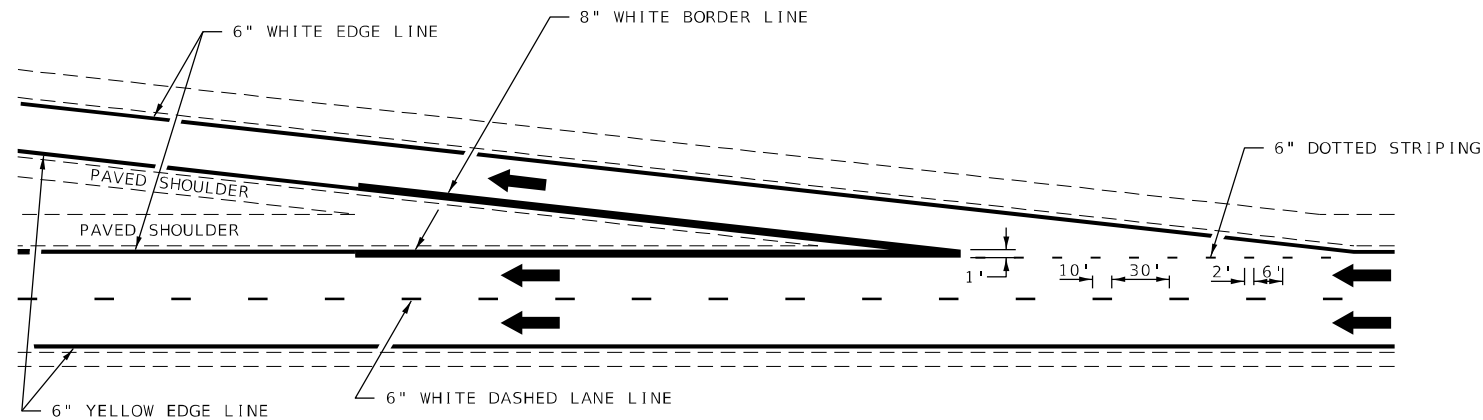
LOADING: 80 m.p.h. wind with 30% gust factor, normal to sign.

DESIGN STRESSES:
Structural steel - 20,000 p.s.i.
Reinforcing steel - 20,000 p.s.i.
Concrete - 1,400 p.s.i.
Footing soil pressure - 2,000 p.s.f.

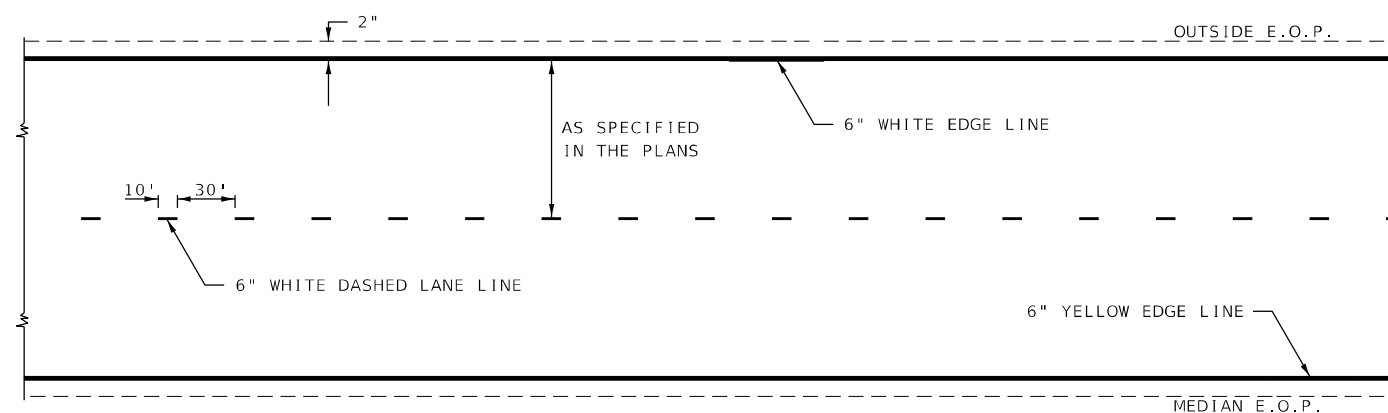
After fabrication, the post and upper 6", min. of the stub post shall be hot-dip galvanized in accordance with AASHTO M111. All bolts, nuts and washers shall be hot-dip galvanized in accordance with AASHTO M232.



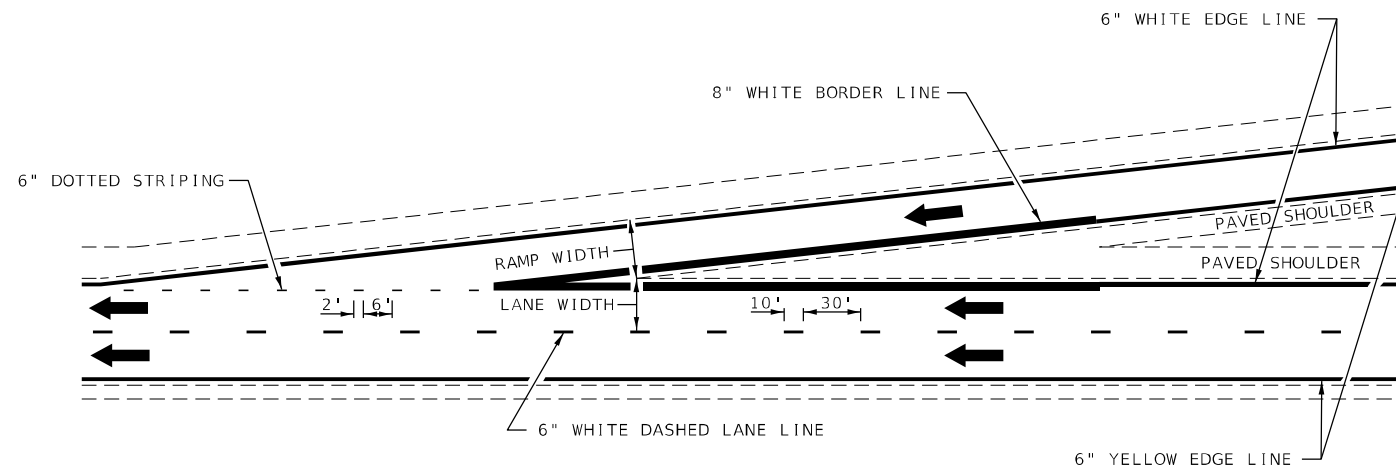
BREAK-AWAY WIDE FLANGE STEEL POST DETAILS



TYPICAL EXIT RAMP MARKING



TYPICAL CENTERLINE & EDGELINE MARKINGS



TYPICAL ENTRANCE RAMP MARKING

NOT TO SCALE

DISTRICT 7 DETAIL NO. 7800002

STATE OF ILLINOIS
DEPARTMENT OF TRANSPORTATION

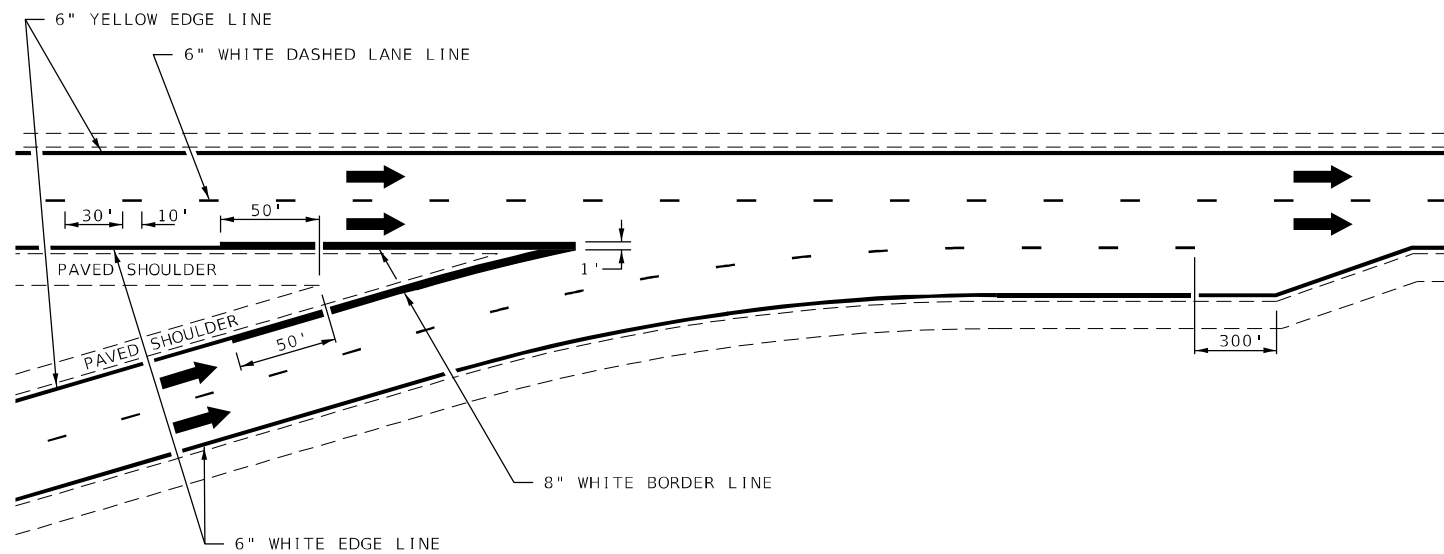
TYPICAL APPLICATIONS OF FREEWAY/EXPRESSWAY
PAVEMENT MARKING

| F.A.I. RTE. | SECTION | COUNTY | TOTAL SHEETS | SHEET NO. |
|---------------------------|----------|-----------|--------------|-----------|
| 57 | 25-8RS-1 | EFFINGHAM | 17 | 12 |
| CONTRACT NO. 74A20 | | | | |
| ILLINOIS FED. AID PROJECT | | | | |

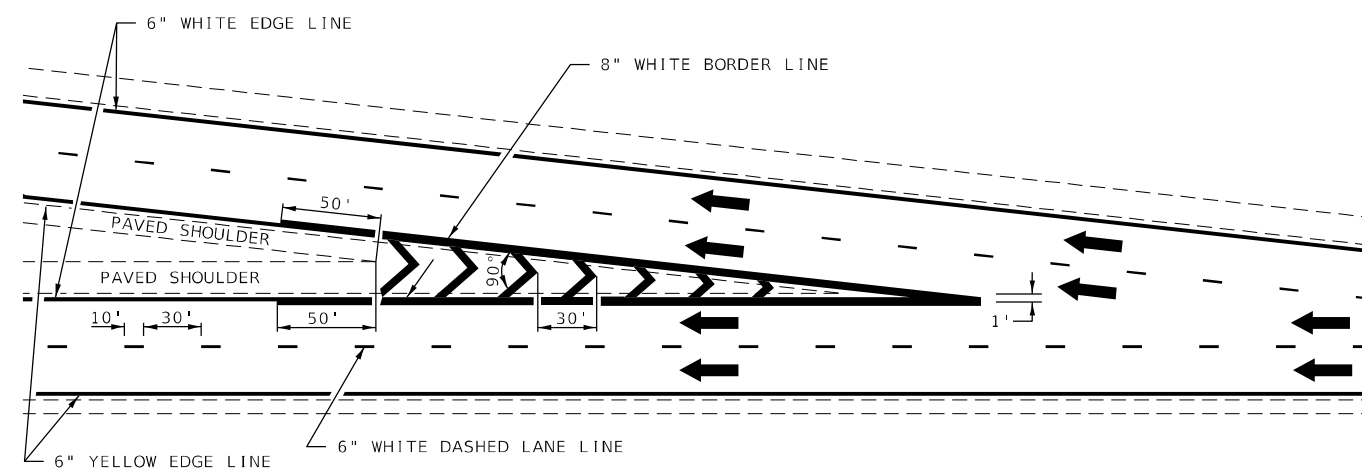
SCALE: SHEET 1 OF 2 SHEETS STA. TO STA.

| | | |
|------------------------------|------------|---------------------|
| USER NAME = steffenmk | DESIGNED - | REVISED - MKS 04-08 |
| | DRAWN - | REVISED - DRM 01-09 |
| PLOT SCALE = 100,0000' / in. | CHECKED - | REVISED - DRM 12-10 |
| PLOT DATE = 3/18/2021 | DATE - | REVISED - MAD 01-20 |

MODEL: Default
FILE NAME: p:\pub\harronm.dwt
PROJECT: 74A20\CADD\Drawings\DOT - Office\District 7\Projects\74A20\CADD\Drawings\DOT\74A20-DRM-Centline.dgn

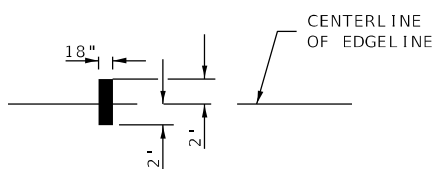
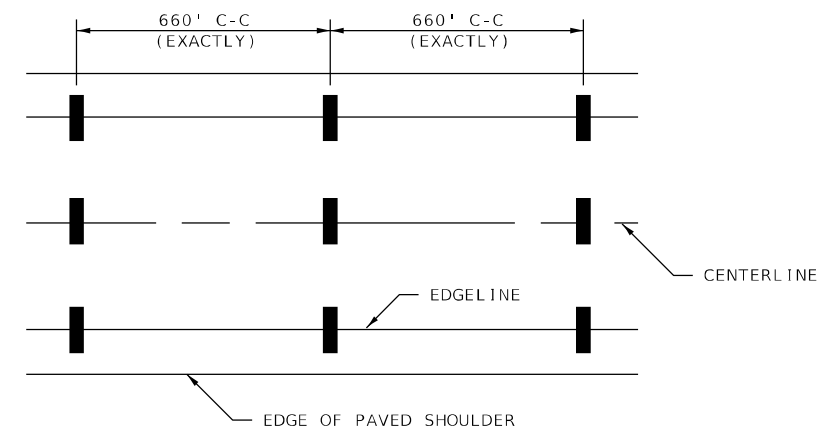


TYPICAL CONVERGENCE MARKING



TYPICAL DIVERGENCE MARKING

AERIAL SPEED CHECK ZONES



NOT TO SCALE

DISTRICT 7 DETAIL NO. 7800002

STATE OF ILLINOIS
DEPARTMENT OF TRANSPORTATION

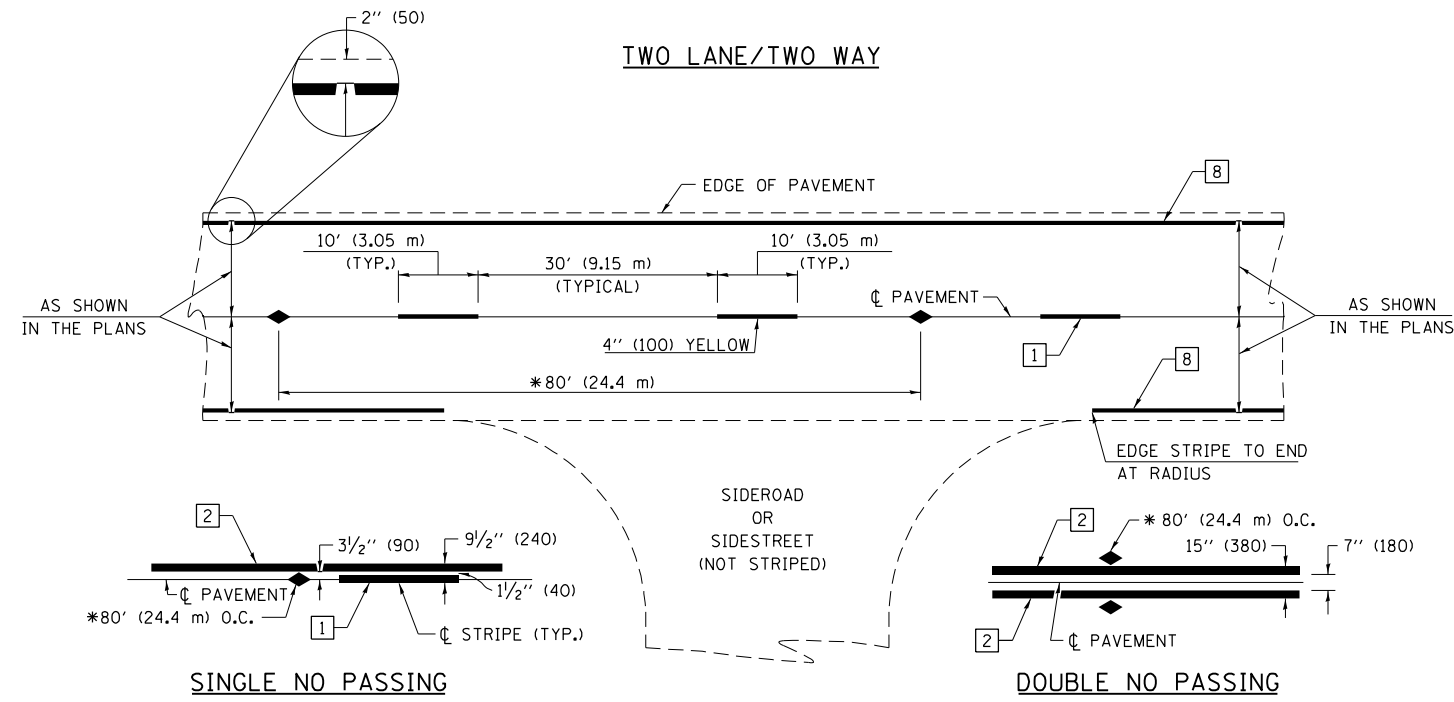
TYPICAL APPLICATIONS OF FREEWAY/EXPRESSWAY
PAVEMENT MARKING

| F.A.I. RTE. | SECTION | COUNTY | TOTAL SHEETS | SHEET NO. |
|---------------------------|----------|-----------|--------------|-----------|
| 57 | 25-8RS-1 | EFFINGHAM | 17 | 13 |
| CONTRACT NO. 74A20 | | | | |
| ILLINOIS FED. AID PROJECT | | | | |

SCALE: SHEET 2 OF 2 SHEETS STA. TO STA.

| | | | |
|------------------------------|------------|-----------|-----------|
| USER NAME = steffenmk | DESIGNED - | REVISED - | MMO 12-99 |
| | DRAWN - | REVISED - | DRM 08-04 |
| PLOT SCALE = 100,0000' / in. | CHECKED - | REVISED - | MKS 04-08 |
| PLOT DATE = 3/18/2021 | DATE - | REVISED - | DRM 01-09 |

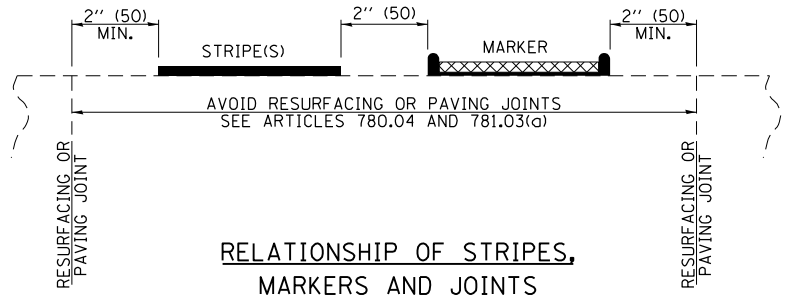
MODEL: Default
FILE NAME: p:\pub\harronm.dwt
PROJECT: 74A20\CADD\Drawings\DOT_Offices\District_7\Project\74A20\CADD\Drawings\DOT_74A20-8RS-13.dwg



* REDUCE TO 40' (12.2 m) O.C. ON CURVES WITH POSTED OR ADVISORY SPEEDS OF 45 mph (70 km/h) OR LESS.

PAVEMENT MARKING LEGEND

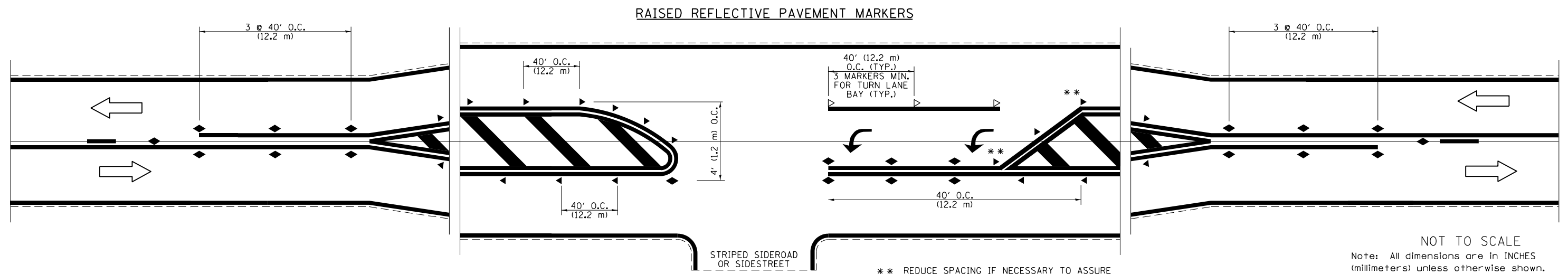
- 1 4" (100) SKIP-DASH (YELLOW)
- 2 4" (100) SOLID (YELLOW)
- 3 12" (300) DIAGONAL (YELLOW)
- 4 4" (100) DOUBLE YELLOW (NARROW)
- 5 12" (300) SOLID WHITE
- 6 RESERVED
- 7 6" (150) SKIP-DASH (WHITE)
- 8 4" (100) SOLID (WHITE)
- 9 12" (300) DIAGONAL (WHITE)
- 10 6" (150) SOLID (WHITE)
- 11 24" (600) STOP BAR (WHITE)
- 12 8" (200) SOLID (WHITE)
- 13 4" (100) PARKING WHITE



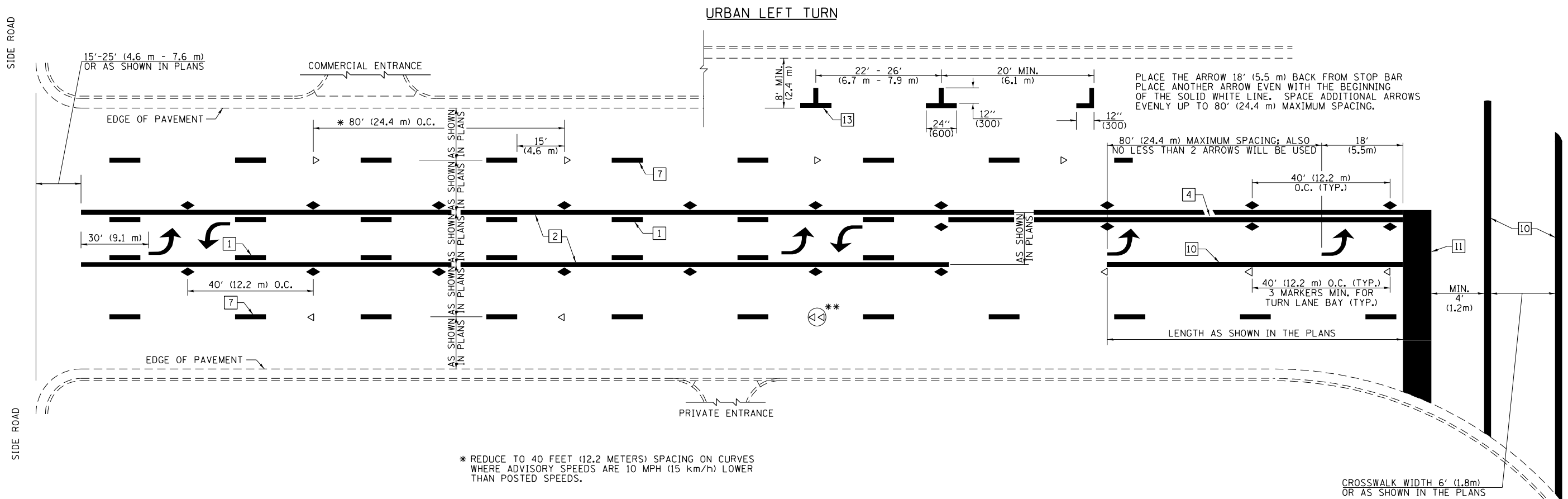
RELATIONSHIP OF STRIPES, MARKERS AND JOINTS

TYPICAL PAVEMENT MARKERS LEGEND

- ◆ TWO-WAY AMBER MARKER
- ▶ ONE-WAY AMBER MARKER
- ▷ ONE-WAY CRYSTAL MARKER



NOT TO SCALE
Note: All dimensions are in INCHES (millimeters) unless otherwise shown.



PLACE THE ARROW 18' (5.5 m) BACK FROM STOP BAR
 PLACE ANOTHER ARROW EVEN WITH THE BEGINNING
 OF THE SOLID WHITE LINE. SPACE ADDITIONAL ARROWS
 EVENLY UP TO 80' (24.4 m) MAXIMUM SPACING.

* REDUCE TO 40 FEET (12.2 METERS) SPACING ON CURVES
 WHERE ADVISORY SPEEDS ARE 10 MPH (15 km/h) LOWER
 THAN POSTED SPEEDS.

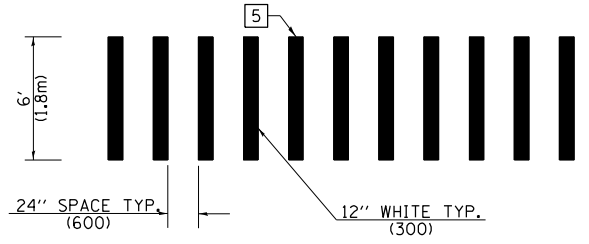
** DOUBLE LANE LINE MARKERS SHALL BE SPECIFIED
 AND SPACED AS SHOWN IN HIGHWAY STANDARD
 781001 FOR MULTI-LANE DIVIDED AND UNDIVIDED
 HIGHWAYS.

PAVEMENT MARKING LEGEND

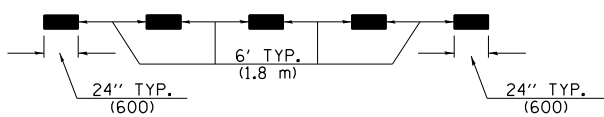
- 1 4" (100) SKIP-DASH (YELLOW)
- 2 4" (100) SOLID (YELLOW)
- 3 12" (300) DIAGONAL (YELLOW)
- 4 4" (100) DOUBLE YELLOW (NARROW)
- 5 12" (300) SOLID WHITE
- 6 RESERVED
- 7 6" (150) SKIP-DASH (WHITE)
- 8 4" (100) SOLID (WHITE)
- 9 12" (300) DIAGONAL (WHITE)
- 10 6" (150) SOLID (WHITE)
- 11 24" (600) STOP BAR (WHITE)
- 12 8" (200) SOLID (WHITE)
- 13 4" (100) PARKING WHITE

GENERAL NOTES

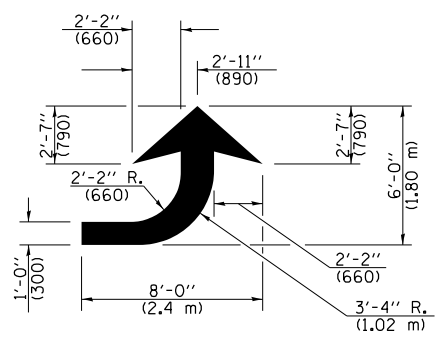
1. TURN ARROW PAIRS SHALL BE PLACED AT 250' (75 m) INTERVALS AND SHALL BE EVENLY SPACED BETWEEN BOTH ENDS OF THE BIDIRECTIONAL LEFT TURN LANE. USE A MINIMUM OF TWO PAIRS PER BLOCK.
2. THE SOLID YELLOW PAVEMENT MARKINGS [2] SHOULD GENERALLY START OR END NEAR THE RADIUS POINT OF EACH STREET RETURN EXCEPT WHERE ONE OR BOTH ENDS WOULD INCLUDE STOP BARS.
3. THE SKIP-DASH PAVEMENT MARKINGS [1] OR [7] SHOULD BE CENTERED BETWEEN BOTH ENDS OF EACH CITY BLOCK AND SHALL BE PLACED SO THEY LINE UP ACROSS FROM EACH OTHER.
4. USE LARGE ARROW SIZE FOR BOTH RURAL AND URBAN LOCATIONS. (SEE LAST PAGE OF SECTION 780x FOR SYMBOLS TABLE)
5. LANE LINE EXTENSIONS SHALL BE THE SAME COLOR AND WIDTH AS THE LANE LINE BEING EXTENDED.



**CROSSWALK DETAIL
 (DECATUR CITY LIMITS ONLY)**

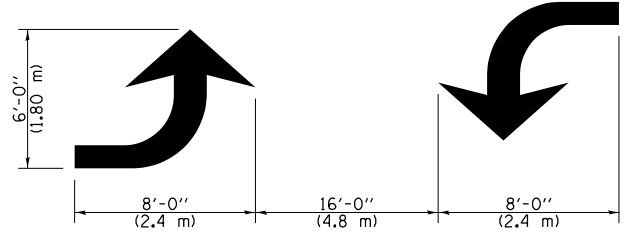


LANE LINE EXTENSIONS



LEFT ARROW

REVERSE FOR RIGHT ARROW
 AREA = 15.6 SQ. FT. (1.47 m²)
 (WHITE)



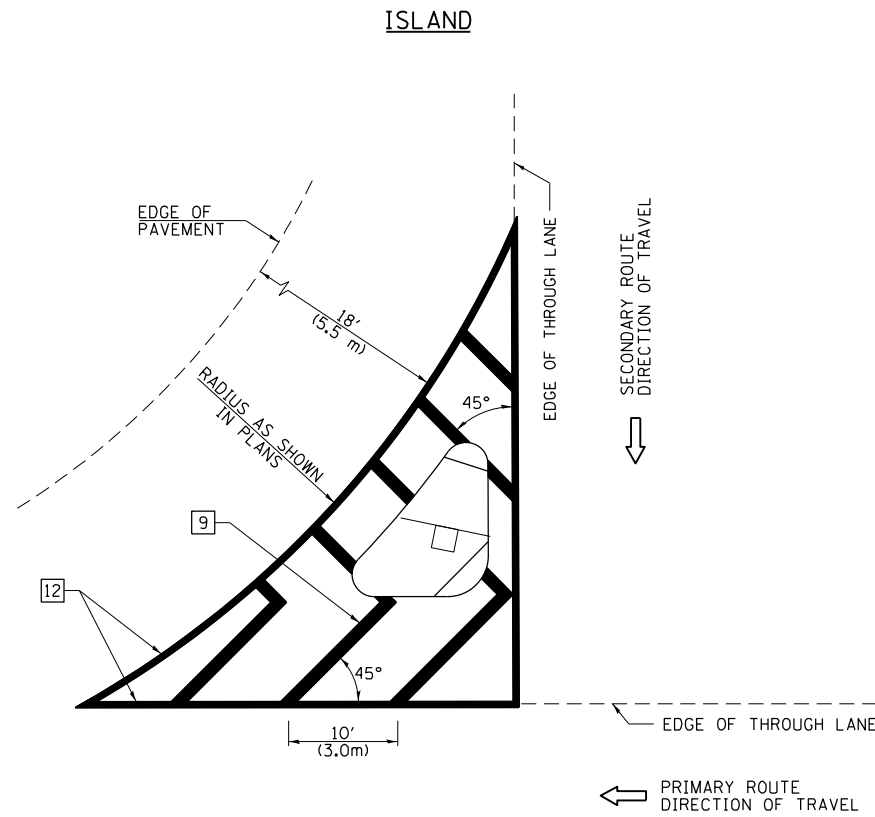
**TYPICAL DOUBLE
 TURN ARROWS (WHITE)**

NOT TO SCALE

Note: All dimensions are in INCHES (millimeters) unless otherwise shown.

DISTRICT 7 DETAIL NO. 78000001

| | | | | | | | | | | | |
|--|-----------------------|------------|-----------|---|---|---------------------------|----------|-----------|--------------|-----------|--|
| FILE NAME = | USER NAME = steffennk | DESIGNED - | REVISED - | STATE OF ILLINOIS DEPARTMENT OF TRANSPORTATION | PAVEMENT MARKING AND RAISED REFLECTIVE PAVEMENT MARKERS (RURAL & URBAN APPLICATIONS) | F.A.I. RTE. | SECTION | COUNTY | TOTAL SHEETS | SHEET NO. | |
| pw:\planning\dot.illinois.gov\PIWIDOT\Documents\IDOT Offices\District 7\Projects\74A20\DRAWN\CADsheets\0774A20-sht-details.dgn | | CHECKED - | REVISED - | | | 57 | 25-8RS-1 | EFFINGHAM | 17 | 15 | |
| PLOT SCALE = 100.0000' / in. | | DATE - | REVISED - | | | CONTRACT NO. 74A20 | | | | | |
| PLOT DATE = 3/18/2021 | | | | | | ILLINOIS FED. AID PROJECT | | | | | |
| | | | | SCALE: | | SHEET NO. 2 OF 4 SHEETS | | STA. | | TO STA. | |

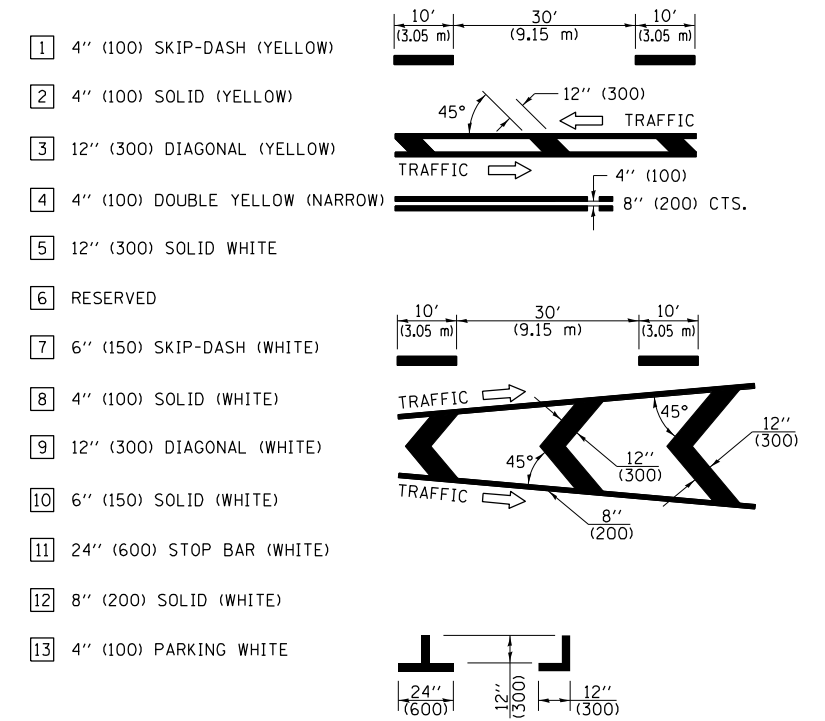


GENERAL NOTES

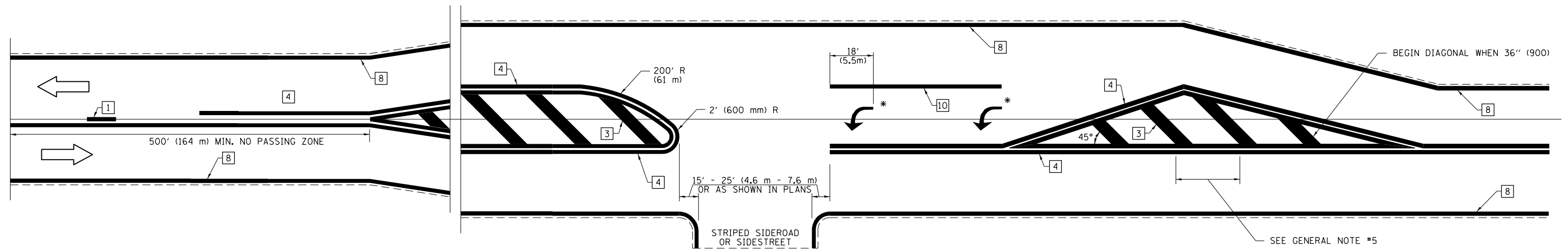
1. RAISED AND CORRUGATED MEDIANS SHALL BE OUTLINED WITH [2] IF PRESENT.
2. SOME OF THE INFORMATION INCLUDED WITH THIS DETAIL MAY NOT BE APPLICABLE TO THIS IMPROVEMENT.
3. PAVEMENT MARKINGS ARE TO BE EXTENDED THROUGH OMISSIONS WHEN APPLICABLE.
4. FINAL PAVEMENT MARKINGS SHALL BE IN PLACE PRIOR TO PLACING ANY RAISED REFLECTIVE PAVEMENT MARKERS.
5. THE FOLLOWING CRITERIA SHALL BE USED FOR SELECTING THE DIAGONAL PAVEMENT MARKING SPACING:

| | |
|------------------------|-------------|
| < 30 MPH (< 50 km/h) | 15' (4.5 m) |
| 30-45 MPH (50-75 km/h) | 20' (6.0 m) |
| > 45 MPH (> 75 km/h) | 30' (9.0 m) |

PAVEMENT MARKING LEGEND



RURAL LEFT TURN STRIPING



* PLACE AN ARROW 18' (5.5 m) BACK FROM STOP BAR. PLACE ANOTHER ARROW EVEN WITH THE BEGINNING OF THE SOLID WHITE LINE. SPACE ADDITIONAL ARROWS EVENLY UP TO 80' (24.4 m) MAXIMUM SPACING. USE MINIMUM OF 2 ARROWS.

NOT TO SCALE
Note: All dimensions are in INCHES (millimeters) unless otherwise shown.

DISTRICT 7 DETAIL NO. 7800001

| | | | |
|--|------------------------------|------------|-----------|
| FILE NAME = | USER NAME = steffenmk | DESIGNED - | REVISED - |
| pw:\planning\dot.illinois.gov\PIDOT\Documents\IDOT Offices\District 7\Projects\74A20\DRAWN\CADsheets\0774A20-sht-details.dgn | | REVISOR - | REVISED - |
| | PLOT SCALE = 100.0000' / in. | CHECKED - | REVISED - |
| | PLOT DATE = 3/18/2021 | DATE - | REVISED - |

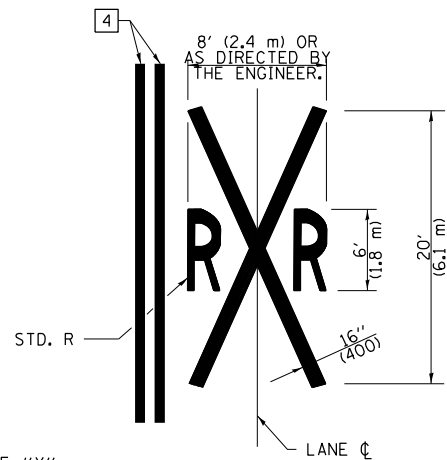
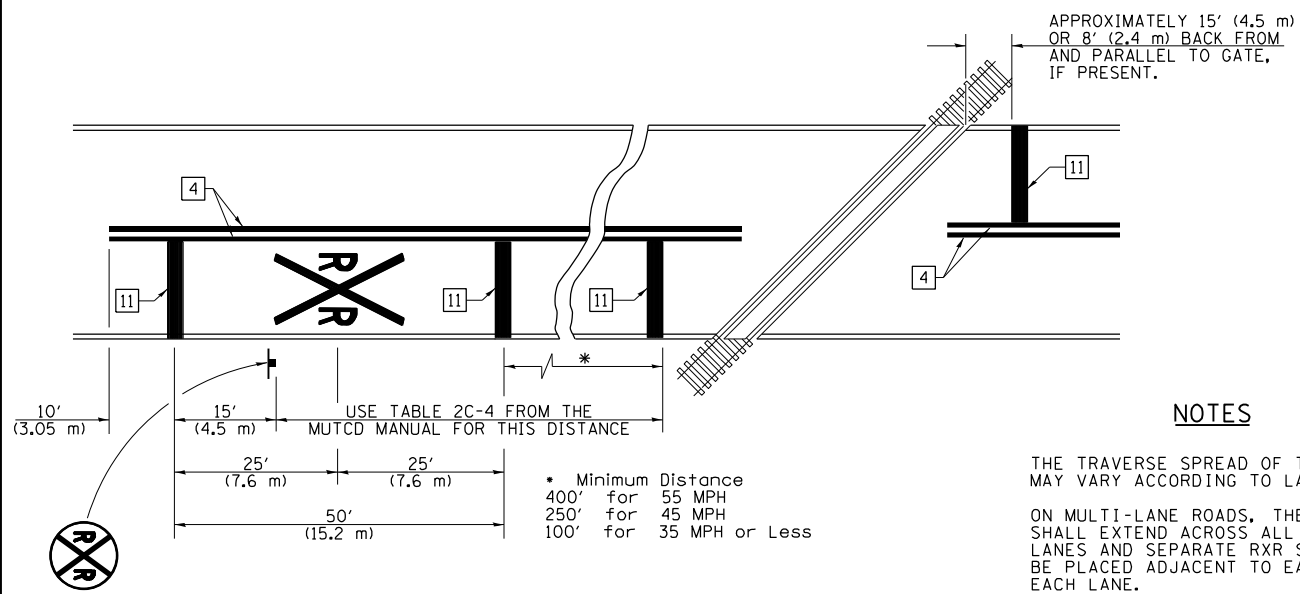
**STATE OF ILLINOIS
DEPARTMENT OF TRANSPORTATION**

**PAVEMENT MARKING AND RAISED REFLECTIVE PAVEMENT MARKERS
(RURAL & URBAN APPLICATIONS)**

SCALE: SHEET NO. 3 OF 4 SHEETS STA. TO STA.

| F.A.I. RTE. | SECTION | COUNTY | TOTAL SHEETS | SHEET NO. |
|---------------------------|----------|-----------|--------------|-----------|
| 57 | 25-BRS-1 | EFFINGHAM | 17 | 16 |
| CONTRACT NO. 74A20 | | | | |
| ILLINOIS FED. AID PROJECT | | | | |

PAVEMENT MARKINGS AT RAILROAD-HIGHWAY GRADE CROSSING



NOTES

THE TRAVERSE SPREAD OF THE "X" MAY VARY ACCORDING TO LANE WIDTH.

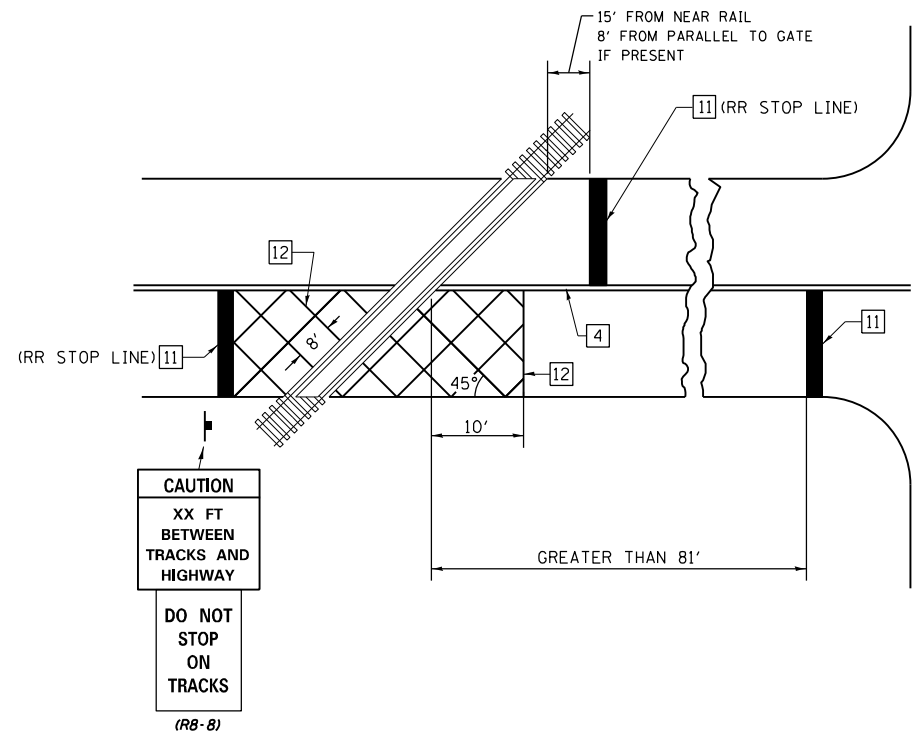
ON MULTI-LANE ROADS, THE STOP LINES SHALL EXTEND ACROSS ALL APPROACH LANES AND SEPARATE RXR SYMBOLS SHALL BE PLACED ADJACENT TO EACH OTHER IN EACH LANE.

WHEN THE PAVEMENT MARKING SYMBOL IS USED, A PORTION OF THE SYMBOL SHOULD BE LOCATED DIRECTLY ADJACENT TO THE ADVANCE WARNING SIGN (W10-1) AS PLACED BY TABLE II-1, CONDITION B OF THE MUTCD.

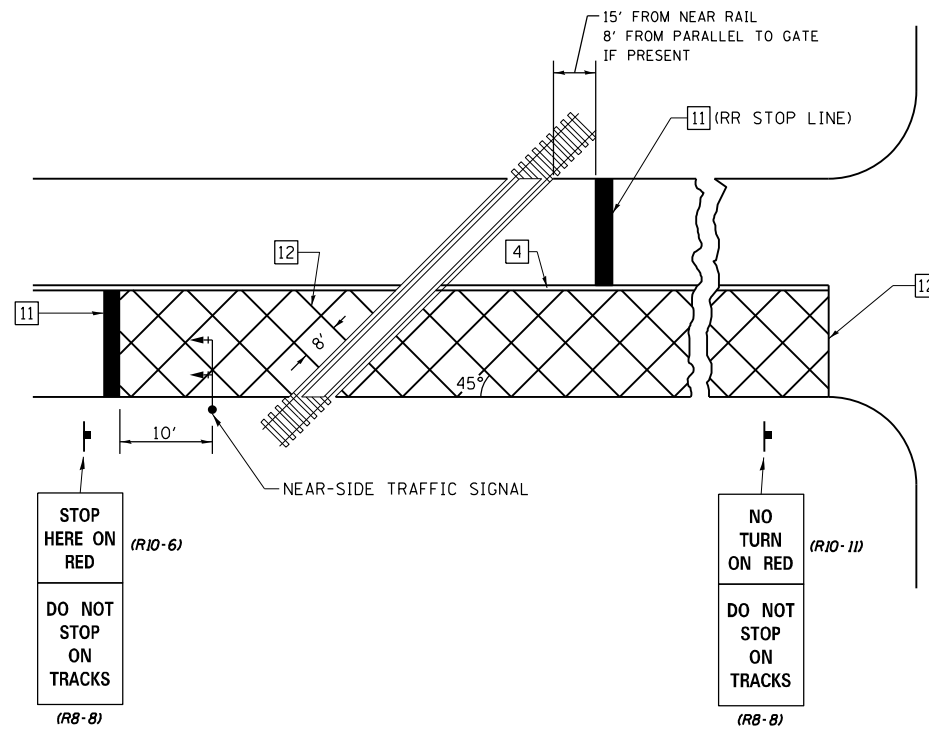
PAVEMENT MARKING LEGEND

- 1 4" (100) SKIP-DASH (YELLOW)
- 2 4" (100) SOLID (YELLOW)
- 3 12" (300) DIAGONAL (YELLOW)
- 4 4" (100) DOUBLE YELLOW (NARROW)
- 5 12" (300) SOLID WHITE
- 6 RESERVED
- 7 6" (150) SKIP-DASH (WHITE)
- 8 4" (100) SOLID (WHITE)
- 9 12" (300) DIAGONAL (WHITE)
- 10 6" (150) SOLID (WHITE)
- 11 24" (600) STOP BAR (WHITE)
- 12 8" (200) SOLID (WHITE)
- 13 4" (100) PARKING WHITE

RAILROAD CROSSING WITH INTERCONNECT ONLY



RAILROAD CROSSING WITH INTERCONNECT AND PRE-SIGNALS



SUPPLEMENTAL PAVEMENT MARKING TREATMENT FOR RAILROAD-HIGHWAY GRADE CROSSING

GENERAL NOTES

1. SUPPLEMENTAL PAVEMENT MARKINGS TO BE INSTALLED ONLY ON APPROACHES TO INTERSECTIONS CONTROLLED BY TRAFFIC SIGNALS WHICH ARE INTERCONNECTED WITH THE RAILROAD WARNING SIGNALS.
2. EXTEND PAVEMENT MARKINGS TO THE INTERSECTION ONLY WHERE NEAR-SIDE TRAFFIC SIGNALS ARE USED.

NOT TO SCALE

Note: All dimensions are in INCHES (millimeters) unless otherwise shown.

DISTRICT 7 DETAIL NO. 7800001

| | | | | | | | | | | | |
|--|------------------------------|------------|-----------|---|---|---------------------------|----------|-----------|--------------|-----------|--|
| FILE NAME = | USER NAME = steffenk | DESIGNED - | REVISED - | STATE OF ILLINOIS DEPARTMENT OF TRANSPORTATION | PAVEMENT MARKING AND RAISED REFLECTIVE PAVEMENT MARKERS (RURAL & URBAN APPLICATIONS) | F.A.I. RTE. | SECTION | COUNTY | TOTAL SHEETS | SHEET NO. | |
| pw:\planroom.dot.illinois.gov\PIWIDOT\Documents\IDOT Offices\District 7\Projects\74A20\DRAWN\CADsheets\0774A20-sht-details.dgn | | REVISIONS | REVISIONS | | | 57 | 25-BRS-1 | EFFINGHAM | 17 | 17 | |
| | PLOT SCALE = 100.0000' / in. | CHECKED - | REVISIONS | | | CONTRACT NO. 74A20 | | | | | |
| | PLOT DATE = 3/18/2021 | DATE - | REVISIONS | | | ILLINOIS FED. AID PROJECT | | | | | |

SCALE: SHEET NO. 4 OF 4 SHEETS STA. TO STA.