

STATE OF ILLINOIS
DEPARTMENT OF TRANSPORTATION

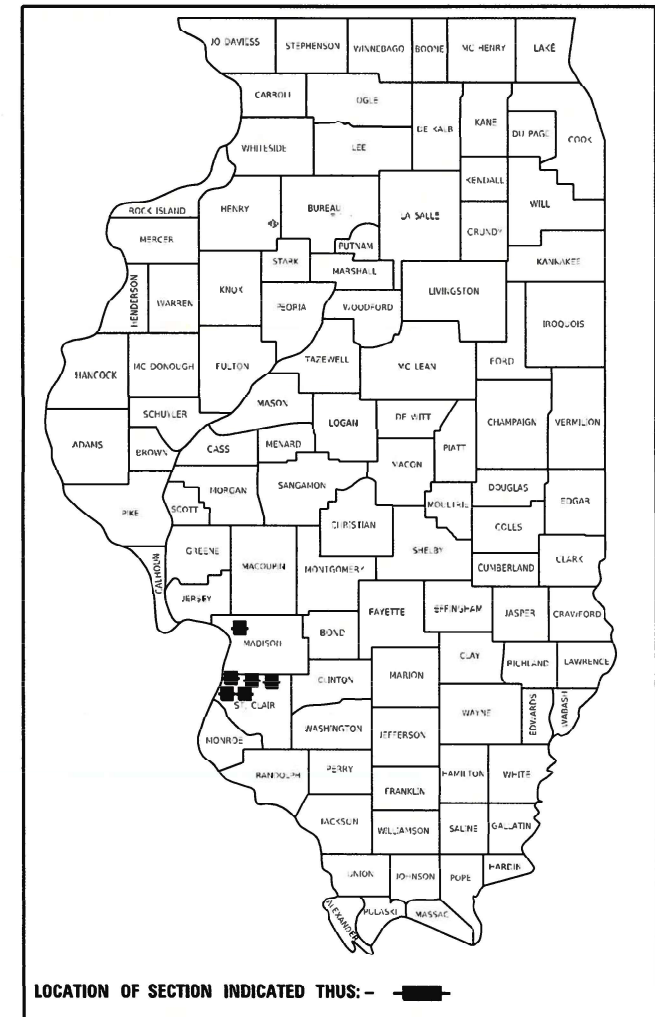
**PROPOSED
HIGHWAY PLANS**

FOR INDEX OF SHEETS, SEE SHEET NO. 2

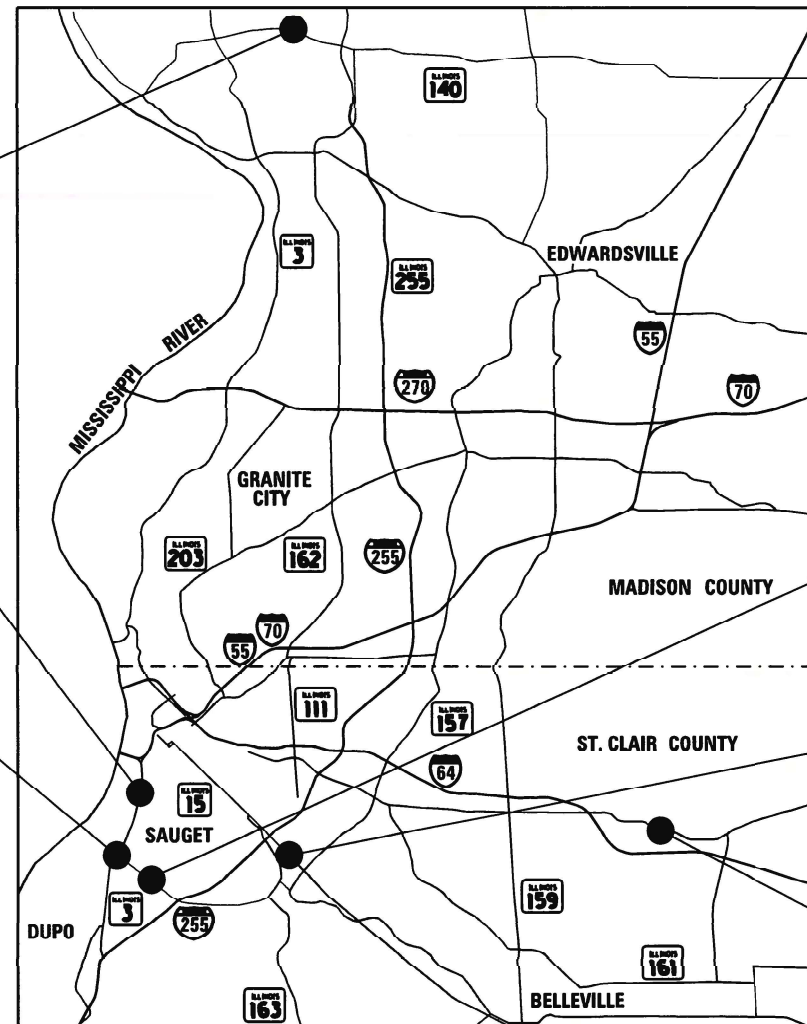
**VARIOUS ROUTES
SECTION : DIST 8 TS MAR 2021-1
PROJECT : STP-NHPP-ARP3(302)
TRAFFIC SIGNAL REPAIR & REPLACEMENT
MADISON / ST. CLAIR COUNTY**

F.A. R.T.E.	SECTION	COUNTY	TOTAL SHEETS	SHEET NO.
	DIST 8 TS MAR 2021-1	ILLINOIS	20	1
CONTRACT NO. 76P06				
* VARIOUS ** VARIOUS *** MADISON / ST CLAIR				

D-98-135-20



C-98-145-20



NOT TO SCALE

LOCATION 1
IL ROUTE 140 & STANLEY RD
COTTAGE HILLS, IL

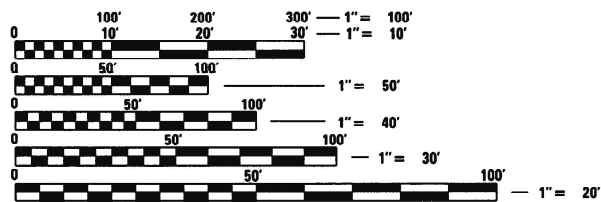
LOCATION 6
IL ROUTE 3 & MONSANTO AVE
SAUGET, IL

LOCATION 5
IL ROUTE 3 & IL ROUTE 157
CAHOKIA, IL

LOCATION 4
IL ROUTE 157 & KAZILEK DR
CAHOKIA, IL

LOCATION 3
IL ROUTE 15 & RACEHORSE DR
ALORTON, IL

LOCATION 2
US ROUTE 50 & SMILEY ST
O'FALLON, IL



FULL SIZE PLANS HAVE BEEN PREPARED USING STANDARD ENGINEERING SCALES. REDUCED SIZED PLANS WILL NOT CONFORM TO STANDARD SCALES. IN MAKING MEASUREMENTS ON REDUCED PLANS, THE ABOVE SCALES MAY BE USED.

J.U.L.I.E.
JOINT UTILITY LOCATION INFORMATION FOR EXCAVATORS
1-800-892-0123
OR 811



Brian D. Schmitt 3/12/2021
Date
License Expires 11/30/2021
MY SEAL APPLIES TO SHEETS: 1-15, 20



PLANS PREPARED BY
1022 Eastport Plaza Drive
Collinsville, Illinois 62234
Phone: (618) 855-8000
Illinois Professional Design Firm
No. 184-003252
License Expires 4/30/2021



License Expires 11/30/2021
MY SEAL APPLIES TO SHEETS: 16-19

**PROJECT ENGINEER : GELIN, HERVE
SQUAD LEADER : PRESTON, MICHAEL**

CONTRACT NO. 76P06

STATE OF ILLINOIS
DEPARTMENT OF TRANSPORTATION

SUBMITTED *March 18, 2021*
Keith Roberts
REGIONAL ENGINEER

May 7, 2021 *Scott A. Elk*
ENGINEER OF DESIGN AND ENVIRONMENT

May 7, 2021 *Jessamyn Jan*
DIRECTOR OF HIGHWAYS PROJECT IMPLEMENTATION

**PRINTED BY THE AUTHORITY
OF THE STATE OF ILLINOIS**




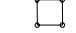


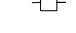





INDEX OF SHEETS

1	COVER SHEET
2	GENERAL NOTES, INDEX OF SHEETS, HIGHWAY STANDARDS, TRAFFIC SIGNALS LEGEND
3-6	SUMMARY OF QUANTITIES
7	SCHEDULE OF QUANTITIES
8-9	TRAFFIC SIGNALS - IL 140 & STANLEY ROAD
10-11	TRAFFIC SIGNALS - US 50 & SMILEY STREET
12-13	TRAFFIC SIGNALS - IL 15 & RACEHORSE DRIVE
14-15	TRAFFIC SIGNALS - IL 157 & KAZILEK DRIVE
16-17	TRAFFIC SIGNALS - IL 3 & IL 157
18-19	TRAFFIC SIGNALS - IL 3 & MONSANTO AVENUE
20	TRAFFIC SIGNAL DETAILS

HIGHWAY STANDARDS

000001-08	701106-02	873001-02
001001-02	701301-04	877001-08
001006	701701-10	877002-04
606301-04	701901-08	877006-06
701001-02	720001-01	878001-11
701006-05	814001-03	880006-01
701101-05		

TRAFFIC SIGNALS LEGEND

RREC	REMOVE AND REINSTALL ELECTRIC CABLE FROM CONDUIT
PVCC	POLYVINYL CHLORIDE CONDUIT
GSC	GALVANIZED STEEL CONDUIT
	EXISTING TRAFFIC SIGNAL MAST ARM
	EXISTING HANDHOLE
	EXISTING DOUBLE HANDHOLE
	EXISTING DETECTOR LOOP
	EXISTING CONTROLLER
	EXISTING STREET NAME SIGN/TRAFFIC SIGN
	EXISTING SERVICE INSTALLATION
	EXISTING CONDUIT
	PROPOSED TRAFFIC SIGNAL MAST ARM
	PROPOSED HANDHOLE
	PROPOSED DOUBLE HANDHOLE
	PROPOSED DETECTOR LOOP
---	PROPOSED CONDUIT: "T" TRENCH, "P" PUSH, SIZE SPECIFIED

GENERAL NOTES

- THE STANDARDS AND REVISIONS LISTED APPLY TO THIS PROJECT.
- THE CONTRACTOR SHALL VERIFY ALL DIMENSIONS AND CONDITIONS IN THE FIELD PRIOR TO CONSTRUCTION AND ORDERING MATERIALS.
- NO SURVEY WAS PERFORMED FOR THIS PROJECT AND THE PLANS WERE CREATED USING AERIAL IMAGERY AND FIELD MEASUREMENTS. ABANDONED UNDERGROUND UTILITIES THAT CONFLICT WITH CONSTRUCTION SHALL BE DIPOSED OF OUTSIDE THE LIMITS OF THE RIGHT OF WAY. ACCORDING TO THE ARTICLE 202.30 OF THE STANDARD SPECIFICATION AND AS DIRECTED BY THE ENGINEER. THIS WORK WILL NOT BE PAID FOR SEPERATELY, BUT SHALL BE INCLUDED IN THE COSTS OF THE UNDERGROUND CONDUIT.
- THE DEPARTMENT STRONGLY ENCOURAGES THE PRIME CONTRACTOR AND THEIR APPROVED SUBCONTRACTORS TO HIRE MINORITY, WOMEN AND DISADVANTAGED INDIVIDUALS FROM ITS FEDERALLY FUNDED HIGHWAY CONSTRUCTION CAREERS TRAINING PROGRAM (HCCTP) TO HELP MEET WORKFORCE AND TRAINEE GOALS. THIS PROGRAM IS TRAINING MINORITIES, WOMEN AND DISADVANTAGED INDIVIDUALS IN HIGHWAY CONSTRUCTION-RELATED SKILLS, E.G., MATH FOR THE TRADES, JOB READINESS, TECHNICAL SKILLS COURSE WORK (CARPENTRY, CONCRETE FLATWORK, BLUEPRINT READING, SITE PLANS, SITE WORK, TOOLS USE, ETC.) AND OSHA 10 HOUR CERTIFICATION, TO PREPARE THEM FOR A CAREER IN THE HIGHWAY CONSTRUCTION TRADES. GRADUATES ARE WELL-TRAINED AND READY TO BECOME PRODUCTIVE ENTRY-LEVEL CONSTRUCTION WORKERS. CONTACT THE DISTRICT 8 EEO OFFICE AT 618-346-3360 AND/OR THE HCCTP COORDINATOR AT 618-874-6528 TO LEARN MORE ABOUT THE PROGRAM AND FOR ASSISTANCE IN MEETING WORKFORCE AND TRAINEE GOALS.
- MEMBERS OF J.U.L.I.E CALL TOLL FREE (800) 892-1023 OR 811. NON-J.U.L.I.E. MEMBERS MUST BE NOTIFIED INDIVIDUALLY.
- ILLINOIS STATE LAW REQUIRES A 48-HOUR NOTICE BE GIVEN TO ALL UTILITIES WITHIN THE PROJECT AREA BEFORE DIGGING. FIELD MARKING OF FACILITIES MAY BE OBTAINED BY CONTACTING J.U.L.I.E. OR FOR NON-MEMBERS, THE UTILITY COMPANY DIRECTLY.
- THE FOLLOWING UTILITIES ARE KNOWN TO HAVE FACILITIES WITHIN THE PROJECT AREA AS FOLLOWS:

LOCATION 1

IL ROUTE 140 & STANLEY RD

AMEREN ILLINOIS
ATT
VILLAGE OF BETHALTO
CHARTER COMMUNICATIONS
VILLAGE OF EAST ALTON
IL AMERICAN WATER - ALTON
WOOD RIVER DRAINAGE & LEVEE DIST

GAS & ELECTRIC
PHONE
SEWER & WATER
CABLE TV
SEWER & WATER
WATER
SEWER

LOCATION 2

US ROUTE 50 & SMILEY ST

AMEREN ILLINOIS
ATT
CHARTER COMMUNICATIONS
CLEARWAVE COMMUNICATIONS
MCI
CITY OF O'FALLON

GAS & ELECTRIC
PHONE
CABLE TV
PHONE
PHONE
SEWER & WATER

LOCATION 3

ILLINOIS ROUTE 15 & RACEHORSE DR

AMEREN ILLINOIS
ATT
CHARTER COMMUNICATIONS
CLEARWAVE COMMUNICATIONS
COMMONFIELDS OF CAHOKIA PUBLIC WATER DISTRICT
CITY OF CENTERVILLE
LEVEL 3 (CENTURY LINK)

GAS & ELECTRIC
PHONE & FIBER OPTIC
CABLE TV
PHONE
SEWER & WATER
SEWER
PHONE & FIBER OPTIC

LOCATION 4

ILLINOIS ROUTE 157 & KAZILEK DR

AMEREN ILLINOIS
ATT
VILLAGE OF CAHOKIA
CHARTER COMMUNICATIONS
COMMONFIELDS OF CAHOKIA PUBLIC WATER DISTRICT
MCI
PRAIRIE DU PONT PUBLIC WATER

GAS & ELECTRIC
PHONE & FIBER OPTIC
SEWER & WATER
CABLE TV
SEWER & WATER
PHONE
WATER

LOCATION 5

ILLINOIS ROUTE 3 & ILLINOIS ROUTE 157

ADB COMPANIES
AMEREN ILLINOIS
ATT
VILLAGE OF CAHOKIA
CHARTER COMMUNICATIONS
COMMONFIELDS OF CAHOKIA PUBLIC WATER DISTRICT
CITY OF COLUMBIA
SPIRE NGL INC
MCI
BUCKEYE PARTNERS

PHONE
GAS & ELECTRIC
PHONE
SEWER & WATER
CABLE TV
SEWER & WATER
SEWER & WATER
PIPELINE
PHONE
PIPELINE

LOCATION 6

ILLINOIS ROUTE 3 & MONSANTO AVE

AMEREN ILLINOIS
ATT
COMMONFIELDS OF CAHOKIA PUBLIC WATER DISTRICT
INDUSTRIAL GAS PRODUCTS INC
IL AMERICAN WATER-EAST ST LOUIS
SPIRE NGL INC
MCI
VILLAGE OF SAUGET

GAS & ELECTRIC
PHONE
SEWER & WATER
PIPELINE
WATER
PIPELINE
PHONE
ELECTRIC & SEWER

**STATE OF ILLINOIS
DEPARTMENT OF TRANSPORTATION**

**GENERAL NOTES, INDEX OF SHEETS
HIGHWAY STANDARDS
TRAFFIC SIGNALS LEGEND**

SCALE: NTS SHEET 1 OF 1 SHEETS STA. TO STA.

F.A. RTE.	SECTION	COUNTY	TOTAL SHEETS	SHEET NO.
**	DIST 8 TS MAR 2021-1	***	20	2
CONTRACT NO. 76P06				
ILLINOIS FED. AID PROJECT: STP-NHPP-AR3(302)				

* VARIOUS ** VARIOUS *** MADISON / ST CLAIR

USER NAME = bschm	DESIGNED -	REVISED -
	DRAWN -	REVISED -
PLOT SCALE = 40,0000 * / in.	CHECKED -	REVISED -
PLOT DATE = 3/12/2021	DATE -	REVISED -

SUMMARY OF QUANTITIES

80% FED
20% STATE

CONSTRUCTION CODE

CODE NO	ITEM	UNIT	TOTAL	CONSTRUCTION CODE		
				TRAFFIC SIGNALS	TRAFFIC SIGNALS	TRAFFIC SIGNALS
				0021	0021	0021
				URBAN	URBAN	URBAN
		MADISON CO - NHS ROUTE	ST CLAIR CO - NHS ROUTE	ST CLAIR CO - NON-NHS ROUTE		
60618300	CONCRETE MEDIAN SURFACE, 4 INCH	SQ FT	761	195	566	
* 66900200	NON-SPECIAL WASTE DISPOSAL	CU YD	15	11.25	3.75	
67100100	MOBILIZATION	L SUM	1		1	
* 66900530	SOIL DISPOSAL ANALYSIS	EACH	3	2	1	
70102635	TRAFFIC CONTROL AND PROTECTION, STANDARD 701701	L SUM	1.00	0.17	0.66	0.17
* 66901001	REGULATED SUBSTANCES PRE-CONSTRUCTION PLAN	L SUM	1	0.75	0.25	
* 72400710	RELOCATE SIGN PANEL - TYPE 1	SQ FT	162.00	43.00	109.00	10.00
* 66901003	REGULATED SUBSTANCE FINAL CONSTRUCTION REPORT	L SUM	1	0.75	0.25	
* 72400720	RELOCATE SIGN PANEL - TYPE 2	SQ FT	50		50	
* 66901006	REGULATED SUBSTANCES MONITORING	CAL DAY	8	6	2	
81028340	UNDERGROUND CONDUIT, PVC, 1 1/2" DIA.	FOOT	53	12	41	
81028360	UNDERGROUND CONDUIT, PVC, 2 1/2" DIA.	FOOT	120	70		50
81028370	UNDERGROUND CONDUIT, PVC, 3" DIA.	FOOT	425		425	
81400100	HANDHOLE	EACH	3	3		
85000200	MAINTENANCE OF EXISTING TRAFFIC SIGNAL INSTALLATION	EACH	6	1	4	1
87301215	ELECTRIC CABLE IN CONDUIT, SIGNAL NO. 14 2C	FOOT	1810		1373	437
87301225	ELECTRIC CABLE IN CONDUIT, SIGNAL NO. 14 3C	FOOT	864		406	458
87301245	ELECTRIC CABLE IN CONDUIT, SIGNAL NO. 14 5C	FOOT	14347	4358	9063	926
87301255	ELECTRIC CABLE IN CONDUIT, SIGNAL NO. 14 7C	FOOT	2499		2258	241

* SPECIALTY ITEM

MODEL: D:\64bit\...
 FILE NAME: S:\E\0851_20181113_1366_PTB_189-26_VARIOUS.PH II TRAFFIC DESIGN DB - FEI PRIME\WO-03\CADD\CADD Sheets\076P06-MS-SS03.dgn



USER NAME = bschm	DESIGNED -	REVISED -
PLOT SCALE = 2.0000' / in.	DRAWN -	REVISED -
PLOT DATE = 3/12/2021	CHECKED -	REVISED -
	DATE -	REVISED -

STATE OF ILLINOIS
DEPARTMENT OF TRANSPORTATION

SUMMARY OF QUANTITIES

SCALE: NTS SHEET 1 OF 4 SHEETS STA. TO STA.

F.A. * RTE.	SECTION	COUNTY	TOTAL SHEETS	SHEET NO.
**	DIST 8 TS MAR 2021-1	***	20	3
			CONTRACT NO. 76P06	
ILLINOIS FED. AID PROJECT STP-NHPP-ARP3(302)				

* VARIOUS ** VARIOUS *** MADISON / ST CLAIR

REV. - MS

SUMMARY OF QUANTITIES

80% FED
20% STATE

CONSTRUCTION CODE

CODE NO	ITEM	UNIT	TOTAL	CONSTRUCTION CODE		
				TRAFFIC SIGNALS	TRAFFIC SIGNALS	TRAFFIC SIGNALS
				0021	0021	0021
				URBAN	URBAN	URBAN
				MADISON CO - NHS ROUTE	ST CLAIR CO - NHS ROUTE	ST CLAIR CO - NON-NHS ROUTE
87502640	TRAFFIC SIGNAL POST, ALUMINUM 10 FT.	EACH	6	4	2	
87502670	TRAFFIC SIGNAL POST, ALUMINUM 13 FT.	EACH	5		2	3
87502690	TRAFFIC SIGNAL POST, ALUMINUM 15 FT.	EACH	6		6	
87700160	STEEL MAST ARM ASSEMBLY AND POLE, 24 FT.	EACH	1			1
87700180	STEEL MAST ARM ASSEMBLY AND POLE, 28 FT.	EACH	1			1
87700210	STEEL MAST ARM ASSEMBLY AND POLE, 34 FT.	EACH	1		1	
87700220	STEEL MAST ARM ASSEMBLY AND POLE, 36 FT.	EACH	1	1		
87700230	STEEL MAST ARM ASSEMBLY AND POLE, 38 FT.	EACH	2		2	
87700240	STEEL MAST ARM ASSEMBLY AND POLE, 40 FT.	EACH	1		1	
87700250	STEEL MAST ARM ASSEMBLY AND POLE, 42 FT.	EACH	2	2		
87700260	STEEL MAST ARM ASSEMBLY AND POLE, 44 FT.	EACH	1		1	
87700280	STEEL MAST ARM ASSEMBLY AND POLE, 48 FT.	EACH	2		2	
87700290	STEEL MAST ARM ASSEMBLY AND POLE, 50 FT.	EACH	1	1		
87700400	STEEL MAST ARM ASSEMBLY AND POLE, 60 FT.	EACH	2		2	

MODEL: D:\64bit\... FILE NAME: S:\E\0851_20181113_1366_P1B_18P-26_VARIOUS.PH IT TRAFFIC DESIGN DB - FEI PRIME\WO-03\CADD\CADD Sheets\085176P06-18-SS00.dgn



USER NAME = bschm	DESIGNED -	REVISED -
PLOT SCALE = 2.0000' / in.	DRAWN -	REVISED -
PLOT DATE = 3/12/2021	CHECKED -	REVISED -
	DATE -	REVISED -

**STATE OF ILLINOIS
DEPARTMENT OF TRANSPORTATION**

SUMMARY OF QUANTITIES

SCALE: NTS SHEET 2 OF 4 SHEETS STA. TO STA.

F.A. * RTE.	SECTION	COUNTY	TOTAL SHEETS	SHEET NO.
**	DIST 8 TS MAR 2021-1	***	20	4
			CONTRACT NO. 76P06	
ILLINOIS FED. AID PROJECT STP-NHPP-ARP3(302)				

* VARIOUS ** VARIOUS *** MADISON / ST CLAIR

SUMMARY OF QUANTITIES

80% FED
20% STATE

CONSTRUCTION CODE

CODE NO	ITEM	UNIT	TOTAL	CONSTRUCTION CODE		
				TRAFFIC SIGNALS	TRAFFIC SIGNALS	TRAFFIC SIGNALS
				0021	0021	0021
				URBAN	URBAN	URBAN
		MADISON CO - NHS ROUTE	ST CLAIR CO - NHS ROUTE	ST CLAIR CO - NON-NHS ROUTE		
87702630	STEEL MAST ARM ASSEMBLY AND POLE WITH DUAL MAST ARMS, 40 FT. AND 44 FT.	EACH	1		1	
87800100	CONCRETE FOUNDATION, TYPE A	FOOT	17	9	8	
87800400	CONCRETE FOUNDATION, TYPE E 30-INCH DIAMETER	FOOT	20			20
87800415	CONCRETE FOUNDATION, TYPE E 36-INCH DIAMETER	FOOT	151	52	99	
87800420	CONCRETE FOUNDATION, TYPE E 42-INCH DIAMETER	FOOT	42		42	
87900200	DRILL EXISTING HANDHOLE	EACH	17	3	12	2
88030020	SIGNAL HEAD, LED, 1-FACE, 3-SECTION, MAST-ARM MOUNTED	EACH	7		7	
88030050	SIGNAL HEAD, LED, 1-FACE, 3-SECTION, BRACKET MOUNTED	EACH	3	3		
88200510	TRAFFIC SIGNAL BACKPLATE, RETROREFLECTIVE	EACH	7		7	
89500100	RELOCATE EXISTING SIGNAL HEAD	EACH	80	14	56	10
89500200	RELOCATE EXISTING PEDESTRIAN SIGNAL HEAD	EACH	5		2	3
89500300	RELOCATE EXISTING ILLUMINATED SIGN	EACH	6		6	
89500400	RELOCATE EXISTING PEDESTRIAN PUSH-BUTTON	EACH	5		2	3
89502300	REMOVE ELECTRIC CABLE FROM CONDUIT	FOOT	16922	4016	11057	1849

MODEL: D:\64bit\... FILE NAME: S:\E\0851_2018\11-1366_PTB_189-26_VARIOUS.PH IT TRAFFIC DESIGN DB - FEI PRIME\WO-03\CADD\CADD Sheets\085167606-18-SS00.dgn



USER NAME = bschm	DESIGNED -	REVISED -
PLOT SCALE = 2.0000' / in.	DRAWN -	REVISED -
PLOT DATE = 3/12/2021	CHECKED -	REVISED -
	DATE -	REVISED -

**STATE OF ILLINOIS
DEPARTMENT OF TRANSPORTATION**

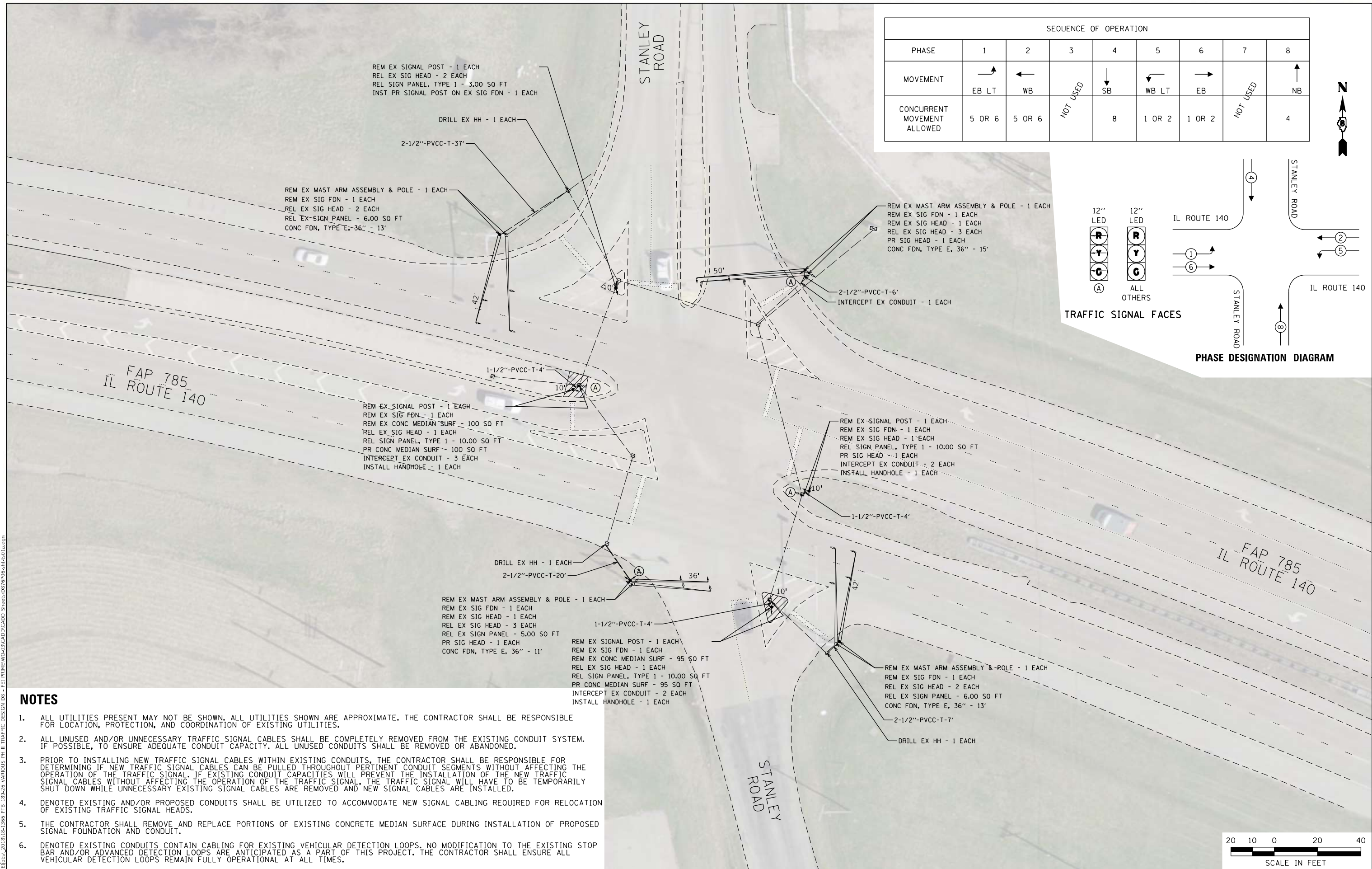
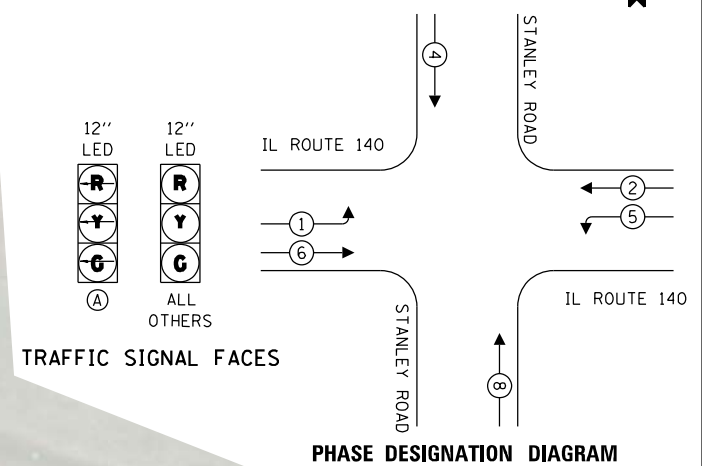
SUMMARY OF QUANTITIES

SCALE: NTS SHEET 3 OF 4 SHEETS STA. TO STA.

F.A. * RTE.	SECTION	COUNTY	TOTAL SHEETS	SHEET NO.
**	DIST 8 TS MAR 2021-1	***	20	5
			CONTRACT NO. 76P06	
ILLINOIS FED. AID PROJECT STP-NHPP-ARP3(302)				

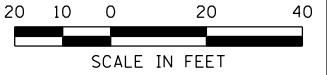
* VARIOUS ** VARIOUS *** MADISON / ST CLAIR

SEQUENCE OF OPERATION								
PHASE	1	2	3	4	5	6	7	8
MOVEMENT	EB LT	WB	NOT USED	SB	WB LT	EB	NOT USED	NB
CONCURRENT MOVEMENT ALLOWED	5 OR 6	5 OR 6	NOT USED	8	1 OR 2	1 OR 2	NOT USED	4



NOTES

1. ALL UTILITIES PRESENT MAY NOT BE SHOWN, ALL UTILITIES SHOWN ARE APPROXIMATE. THE CONTRACTOR SHALL BE RESPONSIBLE FOR LOCATION, PROTECTION, AND COORDINATION OF EXISTING UTILITIES.
2. ALL UNUSED AND/OR UNNECESSARY TRAFFIC SIGNAL CABLES SHALL BE COMPLETELY REMOVED FROM THE EXISTING CONDUIT SYSTEM, IF POSSIBLE, TO ENSURE ADEQUATE CONDUIT CAPACITY. ALL UNUSED CONDUITS SHALL BE REMOVED OR ABANDONED.
3. PRIOR TO INSTALLING NEW TRAFFIC SIGNAL CABLES WITHIN EXISTING CONDUITS, THE CONTRACTOR SHALL BE RESPONSIBLE FOR DETERMINING IF NEW TRAFFIC SIGNAL CABLES CAN BE PULLED THROUGHOUT PERTINENT CONDUIT SEGMENTS WITHOUT AFFECTING THE OPERATION OF THE TRAFFIC SIGNAL. IF EXISTING CONDUIT CAPACITIES WILL PREVENT THE INSTALLATION OF THE NEW TRAFFIC SIGNAL CABLES WITHOUT AFFECTING THE OPERATION OF THE TRAFFIC SIGNAL, THE TRAFFIC SIGNAL WILL HAVE TO BE TEMPORARILY SHUT DOWN WHILE UNNECESSARY EXISTING SIGNAL CABLES ARE REMOVED AND NEW SIGNAL CABLES ARE INSTALLED.
4. DENOTED EXISTING AND/OR PROPOSED CONDUITS SHALL BE UTILIZED TO ACCOMMODATE NEW SIGNAL CABLING REQUIRED FOR RELOCATION OF EXISTING TRAFFIC SIGNAL HEADS.
5. THE CONTRACTOR SHALL REMOVE AND REPLACE PORTIONS OF EXISTING CONCRETE MEDIAN SURFACE DURING INSTALLATION OF PROPOSED SIGNAL FOUNDATION AND CONDUIT.
6. DENOTED EXISTING CONDUITS CONTAIN CABLING FOR EXISTING VEHICULAR DETECTION LOOPS, NO MODIFICATION TO THE EXISTING STOP BAR AND/OR ADVANCED DETECTION LOOPS ARE ANTICIPATED AS A PART OF THIS PROJECT. THE CONTRACTOR SHALL ENSURE ALL VEHICULAR DETECTION LOOPS REMAIN FULLY OPERATIONAL AT ALL TIMES.



USER NAME = bschm	DESIGNED -	REVISED -
PLOT SCALE = 40,0000 * / in.	DRAWN -	REVISED -
PLOT DATE = 3/12/2021	CHECKED -	REVISED -
	DATE -	REVISED -

**STATE OF ILLINOIS
DEPARTMENT OF TRANSPORTATION**

**TRAFFIC SIGNAL MODIFICATION PLAN
IL ROUTE 140 & STANLEY ROAD (BETHALTO, IL)**

F.A. RTE.	SECTION	COUNTY	TOTAL SHEETS	SHEET NO.
**	Dist 8 TS MAR 2021-1	***	20	8
CONTRACT NO. 76P06				
ILLINOIS FED. AID PROJECT STP-NHPP-ARP3(302)				

SCALE: 1" = 20' SHEET 1 OF 2 SHEETS STA. TO STA.

* VARIOUS ** VARIOUS *** MADISON / ST CLAIR

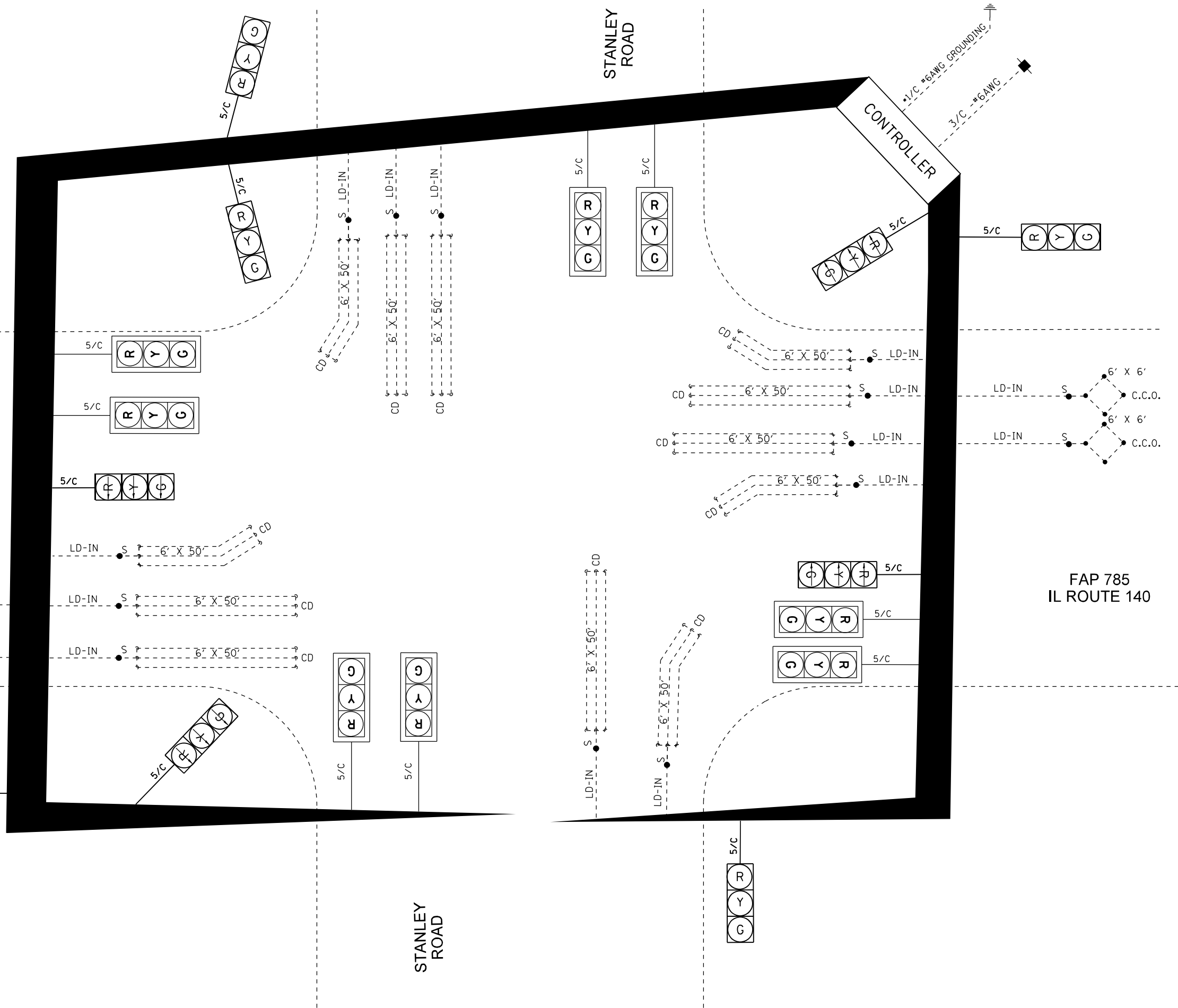
MODEL: D:\p4\h... FILE NAME: G:\E\052018181386.PTB 3/9/23 5:40:05 PM IL TRAFFIC DESIGN DB - FEI PRIME\W03\CADD\CADD_Sheets\076P06-Plan\01a.dgn

CABLE DIAGRAM LEGEND

- ELECTRIC CABLE IN CONDUIT
- - - EXISTING ELECTRIC CABLE IN CONDUIT
- S CABLE SPLICE (SEE GENERAL NOTES)
- 2/C INDICATES NUMBER OF CONDUCTORS IN CABLE
- CD CALL DELAY (SEE GENERAL NOTES)
- CCO CALL CARRY OVER (SEE GENERAL NOTES)
- EXISTING SERVICE INSTALLATION
- EXISTING ILLUMINATED SIGN
- #6 INDICATES AMERICAN WIRE GAUGE (AWG) SIZE 6 CONDUCTORS

FAP 785
IL ROUTE 140

FAP 785
IL ROUTE 140



MODEL: D:\p4\h\...
 FILE NAME: C:\EIT\051_2018\18-1386_PTB_1892-36_VARIOUS_P4_IL TRAFFIC DESIGN.DWG - FEI PRIME\W03\CADD\CADD_Sheets\076P06-PT4-0101b.dwg



USER NAME = bschm	DESIGNED -	REVISED -
	DRAWN -	REVISED -
PLOT SCALE = 40,0000 * / in.	CHECKED -	REVISED -
PLOT DATE = 3/12/2021	DATE -	REVISED -

**STATE OF ILLINOIS
DEPARTMENT OF TRANSPORTATION**

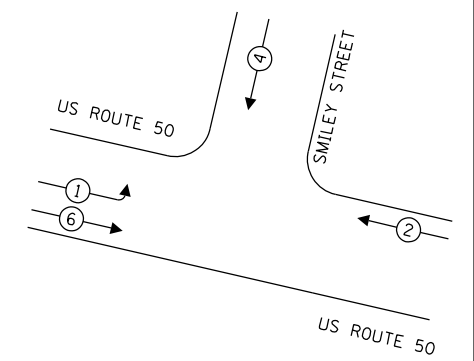
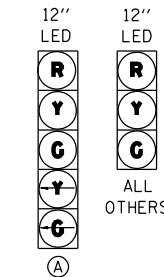
CABLE DIAGRAM			
IL ROUTE 140 & STANLEY ROAD (BETHALTO, IL)			
SCALE: N.T.S.	SHEET 2	OF 2 SHEETS	STA. TO STA.

F.A. RTE.	SECTION	COUNTY	TOTAL SHEETS	SHEET NO.
**	Dist 8 TS MAR 2021-1	***	20	9
CONTRACT NO. 76P06				

ILLINOIS FED. AID PROJECT STP-NHPP-ARP3(302)
 * VARIOUS ** VARIOUS *** MADISON / ST CLAIR

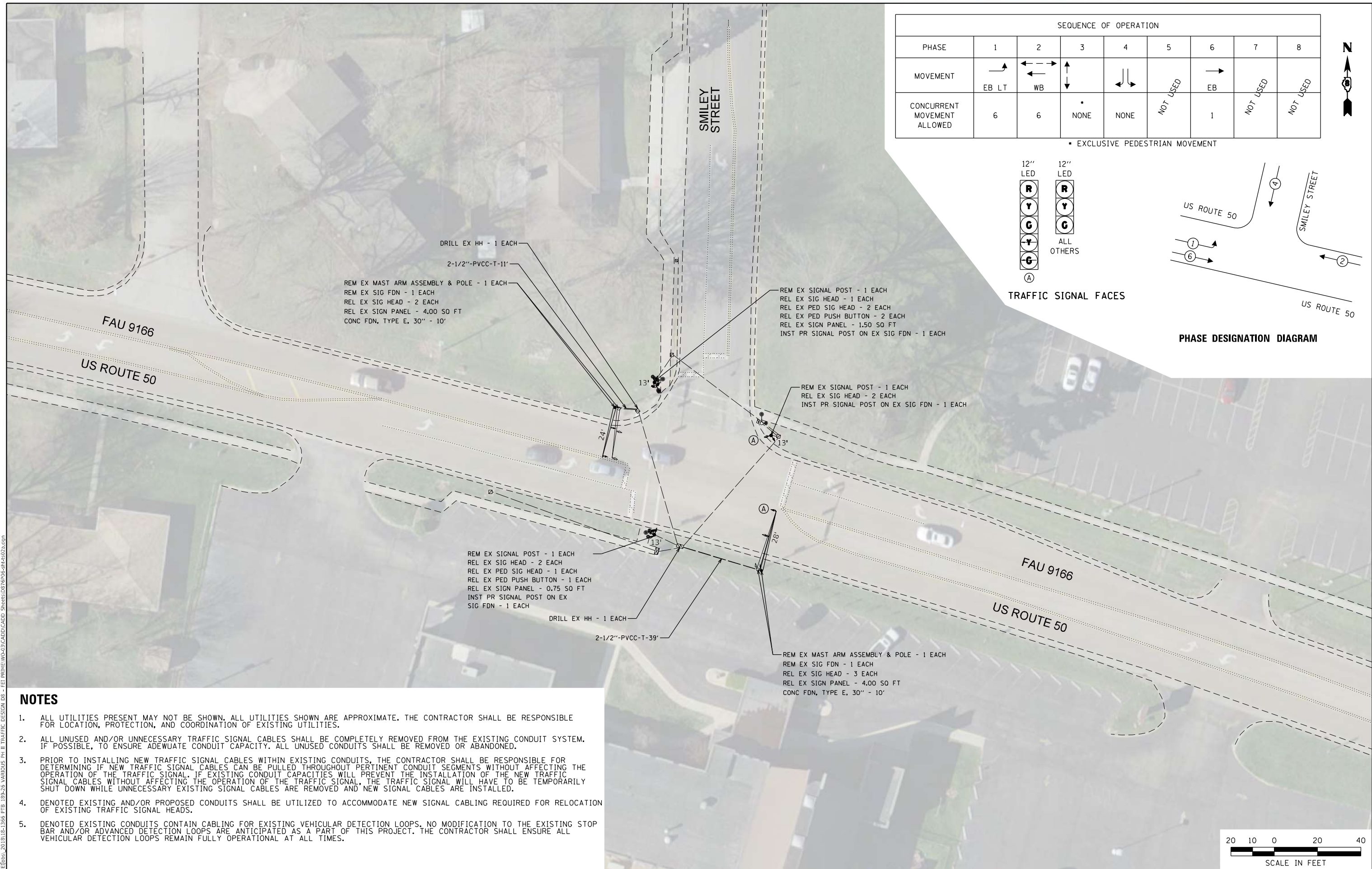
SEQUENCE OF OPERATION								
PHASE	1	2	3	4	5	6	7	8
MOVEMENT	EB LT	WB	↑	↓	NOT USED	EB	NOT USED	NOT USED
CONCURRENT MOVEMENT ALLOWED	6	6	NONE	NONE	NOT USED	1	NOT USED	NOT USED

• EXCLUSIVE PEDESTRIAN MOVEMENT



TRAFFIC SIGNAL FACES

PHASE DESIGNATION DIAGRAM



DRILL EX HH - 1 EACH
2-1/2"-PVCC-T-11'
REM EX MAST ARM ASSEMBLY & POLE - 1 EACH
REL EX SIG FDN - 1 EACH
REL EX SIG HEAD - 2 EACH
REL EX SIGN PANEL - 4.00 SO FT
CONC FDN, TYPE E, 30" - 10'

REM EX SIGNAL POST - 1 EACH
REL EX SIG HEAD - 1 EACH
REL EX PED SIG HEAD - 2 EACH
REL EX PED PUSH BUTTON - 2 EACH
REL EX SIGN PANEL - 1.50 SO FT
INST PR SIGNAL POST ON EX SIG FDN - 1 EACH

REM EX SIGNAL POST - 1 EACH
REL EX SIG HEAD - 2 EACH
INST PR SIGNAL POST ON EX SIG FDN - 1 EACH

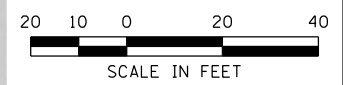
REM EX SIGNAL POST - 1 EACH
REL EX SIG HEAD - 2 EACH
REL EX PED SIG HEAD - 1 EACH
REL EX PED PUSH BUTTON - 1 EACH
REL EX SIGN PANEL - 0.75 SO FT
INST PR SIGNAL POST ON EX SIG FDN - 1 EACH

DRILL EX HH - 1 EACH
2-1/2"-PVCC-T-39'

REM EX MAST ARM ASSEMBLY & POLE - 1 EACH
REM EX SIG FDN - 1 EACH
REL EX SIG HEAD - 3 EACH
REL EX SIGN PANEL - 4.00 SO FT
CONC FDN, TYPE E, 30" - 10'

NOTES

1. ALL UTILITIES PRESENT MAY NOT BE SHOWN, ALL UTILITIES SHOWN ARE APPROXIMATE. THE CONTRACTOR SHALL BE RESPONSIBLE FOR LOCATION, PROTECTION, AND COORDINATION OF EXISTING UTILITIES.
2. ALL UNUSED AND/OR UNNECESSARY TRAFFIC SIGNAL CABLES SHALL BE COMPLETELY REMOVED FROM THE EXISTING CONDUIT SYSTEM. IF POSSIBLE, TO ENSURE ADEQUATE CONDUIT CAPACITY. ALL UNUSED CONDUITS SHALL BE REMOVED OR ABANDONED.
3. PRIOR TO INSTALLING NEW TRAFFIC SIGNAL CABLES WITHIN EXISTING CONDUITS, THE CONTRACTOR SHALL BE RESPONSIBLE FOR DETERMINING IF NEW TRAFFIC SIGNAL CABLES CAN BE PULLED THROUGHOUT PERTINENT CONDUIT SEGMENTS WITHOUT AFFECTING THE OPERATION OF THE TRAFFIC SIGNAL. IF EXISTING CONDUIT CAPACITIES WILL PREVENT THE INSTALLATION OF THE NEW TRAFFIC SIGNAL CABLES WITHOUT AFFECTING THE OPERATION OF THE TRAFFIC SIGNAL, THE TRAFFIC SIGNAL WILL HAVE TO BE TEMPORARILY SHUT DOWN WHILE UNNECESSARY EXISTING SIGNAL CABLES ARE REMOVED AND NEW SIGNAL CABLES ARE INSTALLED.
4. DENOTED EXISTING AND/OR PROPOSED CONDUITS SHALL BE UTILIZED TO ACCOMMODATE NEW SIGNAL CABLING REQUIRED FOR RELOCATION OF EXISTING TRAFFIC SIGNAL HEADS.
5. DENOTED EXISTING CONDUITS CONTAIN CABLING FOR EXISTING VEHICULAR DETECTION LOOPS. NO MODIFICATION TO THE EXISTING STOP BAR AND/OR ADVANCED DETECTION LOOPS ARE ANTICIPATED AS A PART OF THIS PROJECT. THE CONTRACTOR SHALL ENSURE ALL VEHICULAR DETECTION LOOPS REMAIN FULLY OPERATIONAL AT ALL TIMES.



MODEL: D:\p4\h\... FILE NAME: C:\Users\... PROJECT: 2018118-1386 P1B 1802-36 VARIOUS PH II TRAFFIC DESIGN DB - FEI PRIME\W03\CADD\CADD - SHEETS\076P06-PLT-0023.dwg



USER NAME = bschm	DESIGNED -	REVISED -
PLOT SCALE = 40,0000 * / in.	DRAWN -	REVISED -
PLOT DATE = 3/12/2021	CHECKED -	REVISED -
	DATE -	REVISED -

**STATE OF ILLINOIS
DEPARTMENT OF TRANSPORTATION**

**TRAFFIC SIGNAL MODIFICATION PLAN
US ROUTE 50 & SMILEY STREET (O'FALLON, IL)**

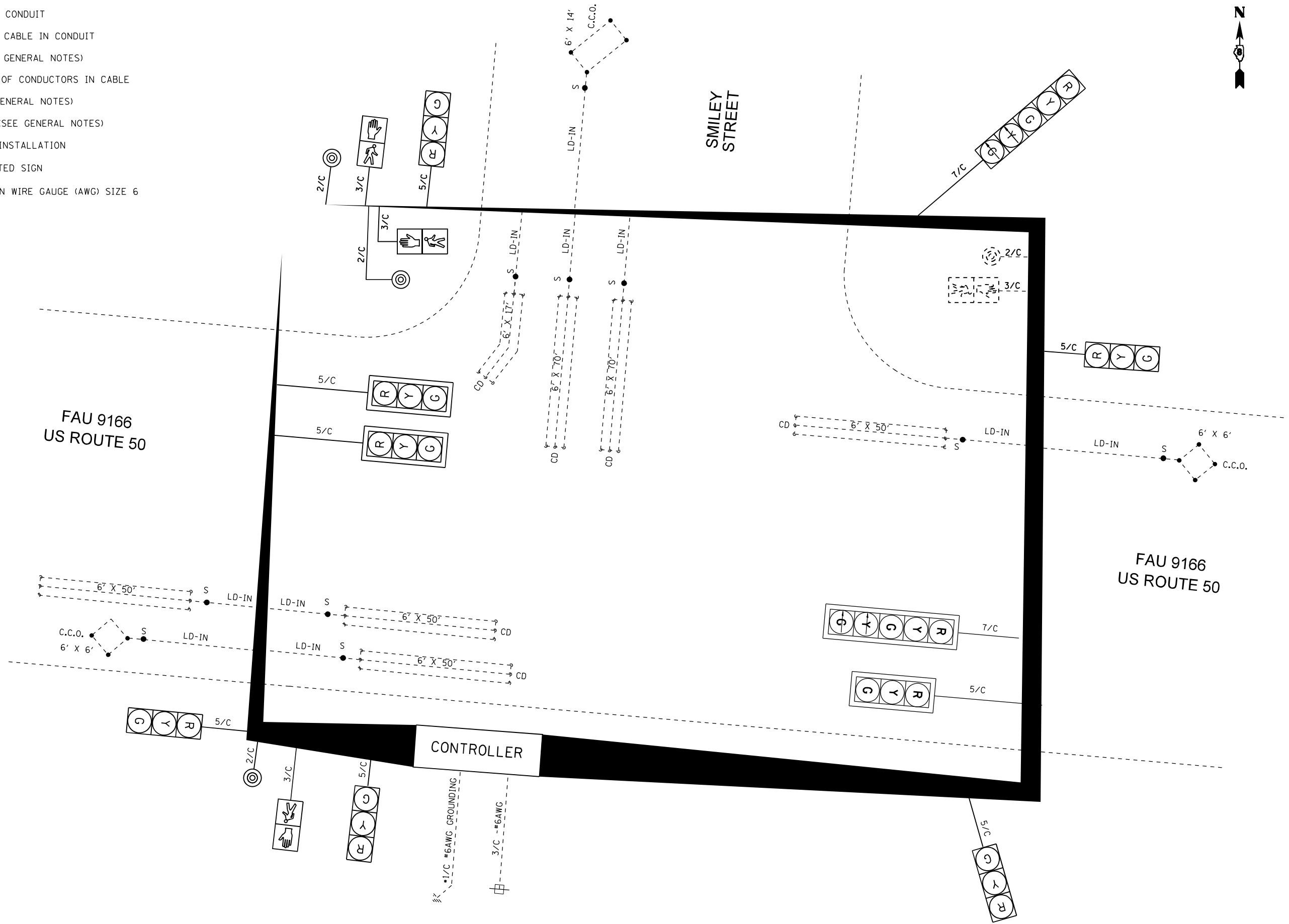
SCALE: 1" = 20' SHEET 1 OF 2 SHEETS STA. TO STA.

F.A. RTE.	SECTION	COUNTY	TOTAL SHEETS	SHEET NO.
**	Dist 8 TS MAR 2021-1	***	20	10
CONTRACT NO. 76P06				

ILLINOIS FED. AID PROJECT STP-NHPP-ARP3(302)
* VARIOUS ** VARIOUS *** MADISON / ST CLAIR

CABLE DIAGRAM LEGEND

- ELECTRIC CABLE IN CONDUIT
- - - EXISTING ELECTRIC CABLE IN CONDUIT
- S CABLE SPLICE (SEE GENERAL NOTES)
- 2/C INDICATES NUMBER OF CONDUCTORS IN CABLE
- CD CALL DELAY (SEE GENERAL NOTES)
- CCO CALL CARRY OVER (SEE GENERAL NOTES)
- ☐ EXISTING SERVICE INSTALLATION
- ☐ EXISTING ILLUMINATED SIGN
- #6 INDICATES AMERICAN WIRE GAUGE (AWG) SIZE 6 CONDUCTORS



MODEL: D:\p4\h\...
 FILE NAME: C:\E:\E\051_2018\181_1366_PTB_189236_VARIOUS_P4_IL TRAFFIC DESIGN DB - FEI PRIME\W03\CADD\CADD_Sheets\077606-PTB-189236.dwg
 WWW.FUHRMANN-ENG.COM



USER NAME = bschm	DESIGNED -	REVISED -
PLOT SCALE = 40,0000 * / in.	DRAWN -	REVISED -
PLOT DATE = 3/12/2021	CHECKED -	REVISED -
	DATE -	REVISED -

STATE OF ILLINOIS
DEPARTMENT OF TRANSPORTATION

CABLE DIAGRAM
US ROUTE 50 & SMILEY STREET (O'FALLON, IL)

SCALE: N.T.S SHEET 2 OF 2 SHEETS STA. TO STA.

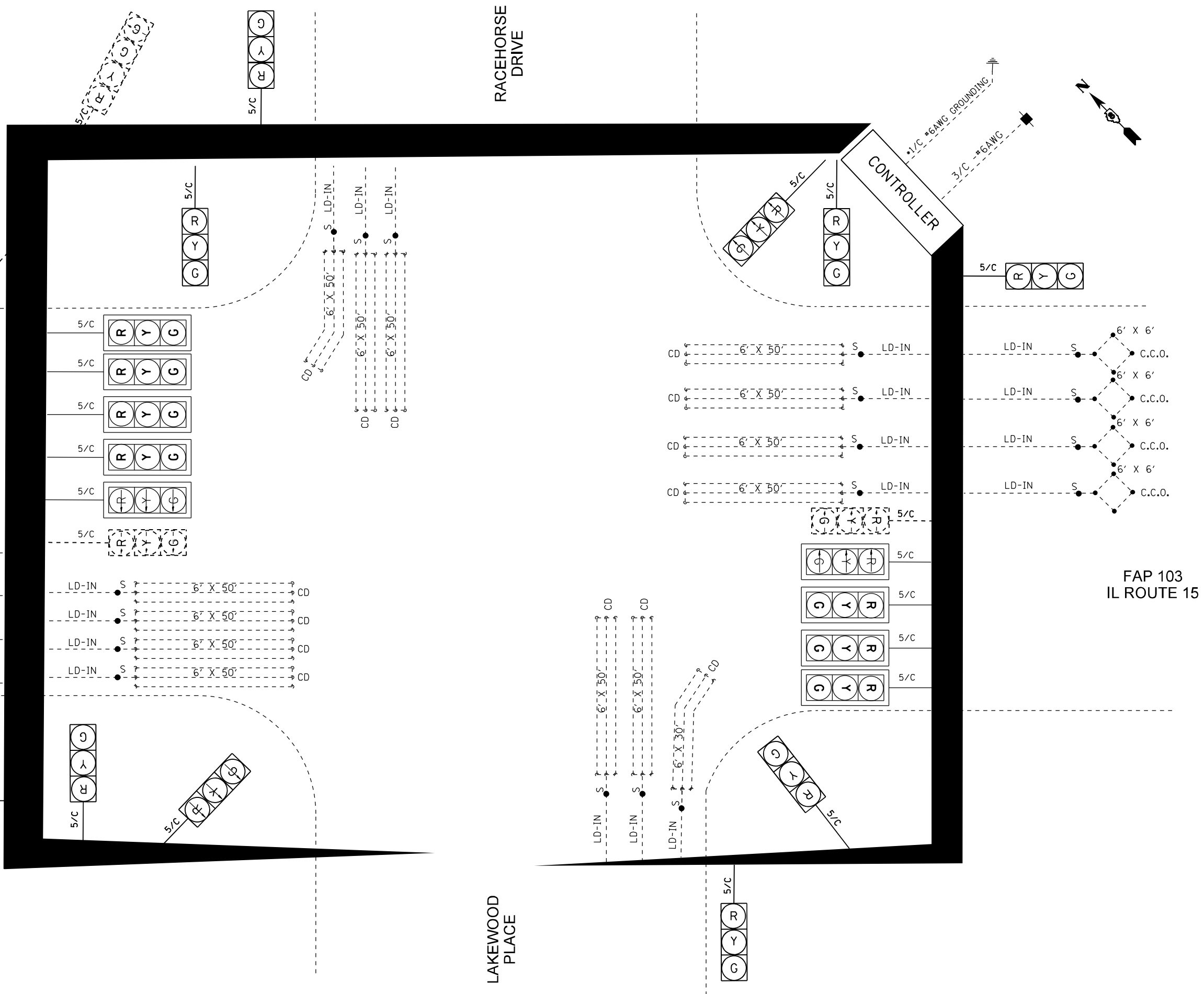
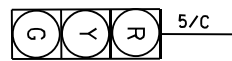
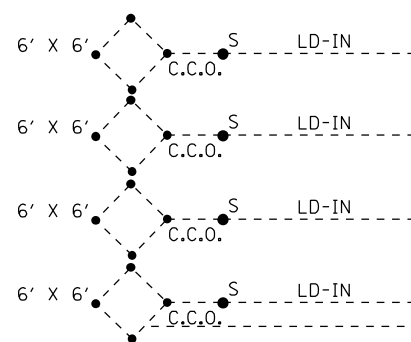
F.A. RTE.	SECTION	COUNTY	TOTAL SHEETS	SHEET NO.
**	Dist 8 TS MAR 2021-1	***	20	11
CONTRACT NO. 76P06				

* VARIOUS ** VARIOUS *** MADISON / ST CLAIR

CABLE DIAGRAM LEGEND

- ELECTRIC CABLE IN CONDUIT
- - - EXISTING ELECTRIC CABLE IN CONDUIT
- S CABLE SPLICE (SEE GENERAL NOTES)
- 2/C INDICATES NUMBER OF CONDUCTORS IN CABLE
- CD CALL DELAY (SEE GENERAL NOTES)
- CCO CALL CARRY OVER (SEE GENERAL NOTES)
- EXISTING SERVICE INSTALLATION
- EXISTING ILLUMINATED SIGN
- #6 INDICATES AMERICAN WIRE GAUGE (AWG) SIZE 6 CONDUCTORS

FAP 103
IL ROUTE 15



FAP 103
IL ROUTE 15

MODEL: D:\p4\h\...
 FILE NAME: C:\E:\bbs\2018\18-1386_PTB_1892-36_VARIOUS_P4_IL TRAFFIC DESIGN.DWG - FEI PRIME\W03\CADD\CADD_Sheets\076P06-PT4-103b.com



USER NAME = bschm	DESIGNED -	REVISED -
DRAWN -	REVISED -	
PLOT SCALE = 40,0000 * / in.	CHECKED -	REVISED -
PLOT DATE = 3/12/2021	DATE -	REVISED -

**STATE OF ILLINOIS
DEPARTMENT OF TRANSPORTATION**

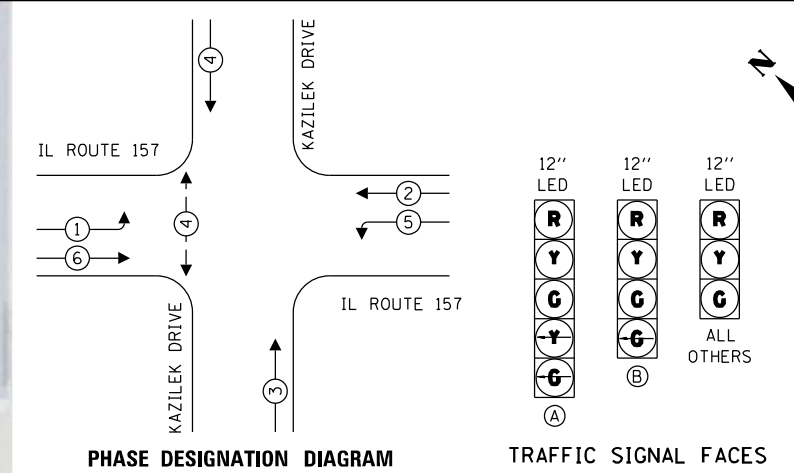
CABLE DIAGRAM	
IL ROUTE 15 & RACEHORSE DRIVE (ALORTON, IL)	
SCALE: N.T.S.	SHEET 2 OF 2 SHEETS STA. TO STA.

F.A. RTE.	SECTION	COUNTY	TOTAL SHEETS	SHEET NO.
**	Dist 8 TS MAR 2021-1	***	20	13
CONTRACT NO. 76P06				
ILLINOIS FED. AID PROJECT STP-NHPP-ARP3(302)				

** VARIOUS *** MADISON / ST CLAIR

SEQUENCE OF OPERATION								
PHASE	1	2	3	4	5	6	7	8
MOVEMENT	EB LT	WB	NB SB	WB LT	EB			
CONCURRENT MOVEMENT ALLOWED	5 OR 6	5 OR 6	NONE	NONE	1 OR 2	1 OR 2	NOT USED	NOT USED

• PEDESTRIAN MOVEMENT DISPLAYED UPON ACTIVATION ONLY



- PR PEDESTRIAN PUSH-BUTTON POST
- REL EX PED PUSH BUTTON (PR) - 1 EACH
- REL SIGN PANEL R10-4B (PR)
- REM EX MAST ARM ASSEMBLY & POLE - 1 EACH
- REM EX SIG FDN - 1 EACH
- REL EX SIG HEAD - 4 EACH
- REL EX PED SIG HEAD - 1 EACH
- REL EX PED PUSH BUTTON (EX) - 1 EACH
- REL EX SIGN PANEL - 11.75 SQ FT
- PR SIG HEAD, LED, 1F, 3S, MAM - 1 EACH
- TRAF SIG BACKPLATE - 1 EACH
- CONC FDN, TYPE E, 36" - 13'

- 3"-PVCC-T-11'
- DRILL EX HH - 2 EACH
- 1-1/2"-PVCC-T-22'

- REM EX SIGNAL POST - 1 EACH
- REL EX SIG HEAD - 3 EACH
- INST PR SIGNAL POST ON EX SIG FDN - 1 EACH

- DRILL EX HH - 2 EACH
- 1-1/2"-PVCC-T-19'
- PR PEDESTRIAN PUSH-BUTTON POST
- REL EX PED PUSH BUTTON (PR) - 1 EACH
- REL SIGN PANEL R10-4B (PR)

- REM EX SIGNAL POST - 1 EACH
- REL EX SIG HEAD - 3 EACH
- REL EX PED SIG HEAD - 1 EACH
- REL EX PED PUSH BUTTON (EX) - 1 EACH
- REL EX SIGN PANEL - 0.75 SQ FT
- INST PR SIGNAL POST ON EX SIG FDN - 1 EACH

- DRILL EX HH - 1 EACH
- 3"-PVCC-T-13'
- REM EX MAST ARM ASSEMBLY & POLE - 1 EACH
- REM EX SIG FDN - 1 EACH
- REL EX SIG HEAD - 4 EACH
- REL EX SIGN PANEL - 11.00 SQ FT
- PR SIG HEAD, LED, 1F, 3S, MAM - 1 EACH
- TRAF SIG BACKPLATE - 1 EACH
- CONC FDN, TYPE E, 36" - 13'

FAP 592
IL ROUTE 157

FAP 592
IL ROUTE 157

NOVA PLAZA
SHOPPING
CENTER
ENTRANCE

NOTES

- ALL UTILITIES PRESENT MAY NOT BE SHOWN, ALL UTILITIES SHOWN ARE APPROXIMATE. THE CONTRACTOR SHALL BE RESPONSIBLE FOR LOCATION, PROTECTION, AND COORDINATION OF EXISTING UTILITIES.
- ALL UNUSED AND/OR UNNECESSARY TRAFFIC SIGNAL CABLES SHALL BE COMPLETELY REMOVED FROM THE EXISTING CONDUIT SYSTEM, IF POSSIBLE, TO ENSURE ADEQUATE CONDUIT CAPACITY. ALL UNUSED CONDUITS SHALL BE REMOVED OR ABANDONED.
- PRIOR TO INSTALLING NEW TRAFFIC SIGNAL CABLES WITHIN EXISTING CONDUITS, THE CONTRACTOR SHALL BE RESPONSIBLE FOR DETERMINING IF NEW TRAFFIC SIGNAL CABLES CAN BE PULLED THROUGHOUT PERTINENT CONDUIT SEGMENTS WITHOUT AFFECTING THE OPERATION OF THE TRAFFIC SIGNAL. IF EXISTING CONDUIT CAPACITIES WILL PREVENT THE INSTALLATION OF THE NEW TRAFFIC SIGNAL CABLES WITHOUT AFFECTING THE OPERATION OF THE TRAFFIC SIGNAL, THE TRAFFIC SIGNAL WILL HAVE TO BE TEMPORARILY SHUT DOWN WHILE UNNECESSARY EXISTING SIGNAL CABLES ARE REMOVED AND NEW SIGNAL CABLES ARE INSTALLED.
- DENOTED EXISTING AND/OR PROPOSED CONDUITS SHALL BE UTILIZED TO ACCOMMODATE NEW SIGNAL CABLING REQUIRED FOR RELOCATION OF EXISTING TRAFFIC SIGNAL HEADS.
- DENOTED EXISTING CONDUITS CONTAIN CABLING FOR EXISTING VEHICULAR DETECTION LOOPS, NO MODIFICATION TO THE EXISTING STOP BAR AND/OR ADVANCED DETECTION LOOPS ARE ANTICIPATED AS A PART OF THIS PROJECT. THE CONTRACTOR SHALL ENSURE ALL VEHICULAR DETECTION LOOPS REMAIN FULLY OPERATIONAL AT ALL TIMES.



MODEL: D:\p4\h\... FILE NAME: C:\Users\... MODEL: D:\p4\h\... FILE NAME: C:\Users\...



USER NAME = bschm	DESIGNED -	REVISED -
PLOT SCALE = 40,0000 * / in.	DRAWN -	REVISED -
PLOT DATE = 3/12/2021	CHECKED -	REVISED -
	DATE -	REVISED -

STATE OF ILLINOIS
DEPARTMENT OF TRANSPORTATION

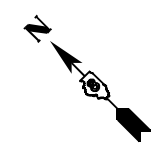
TRAFFIC SIGNAL MODIFICATION PLAN
IL ROUTE 157 & KAZILEK DRIVE (CAHOKIA, IL)

F.A. RTE.	SECTION	COUNTY	TOTAL SHEETS	SHEET NO.
**	Dist 8 TS MAR 2021-1	***	20	14
CONTRACT NO. 76P06				
ILLINOIS FED. AID PROJECT STP-NHPP-AR3(302)				

* VARIOUS ** VARIOUS *** MADISON / ST CLAIR

CABLE DIAGRAM LEGEND

- ELECTRIC CABLE IN CONDUIT
- - - EXISTING ELECTRIC CABLE IN CONDUIT
- S CABLE SPLICE (SEE GENERAL NOTES)
- 2/C INDICATES NUMBER OF CONDUCTORS IN CABLE
- CD CALL DELAY (SEE GENERAL NOTES)
- CCO CALL CARRY OVER (SEE GENERAL NOTES)
- EXISTING SERVICE INSTALLATION
- EXISTING ILLUMINATED SIGN
- #6 INDICATES AMERICAN WIRE GAUGE (AWG) SIZE 6 CONDUCTORS

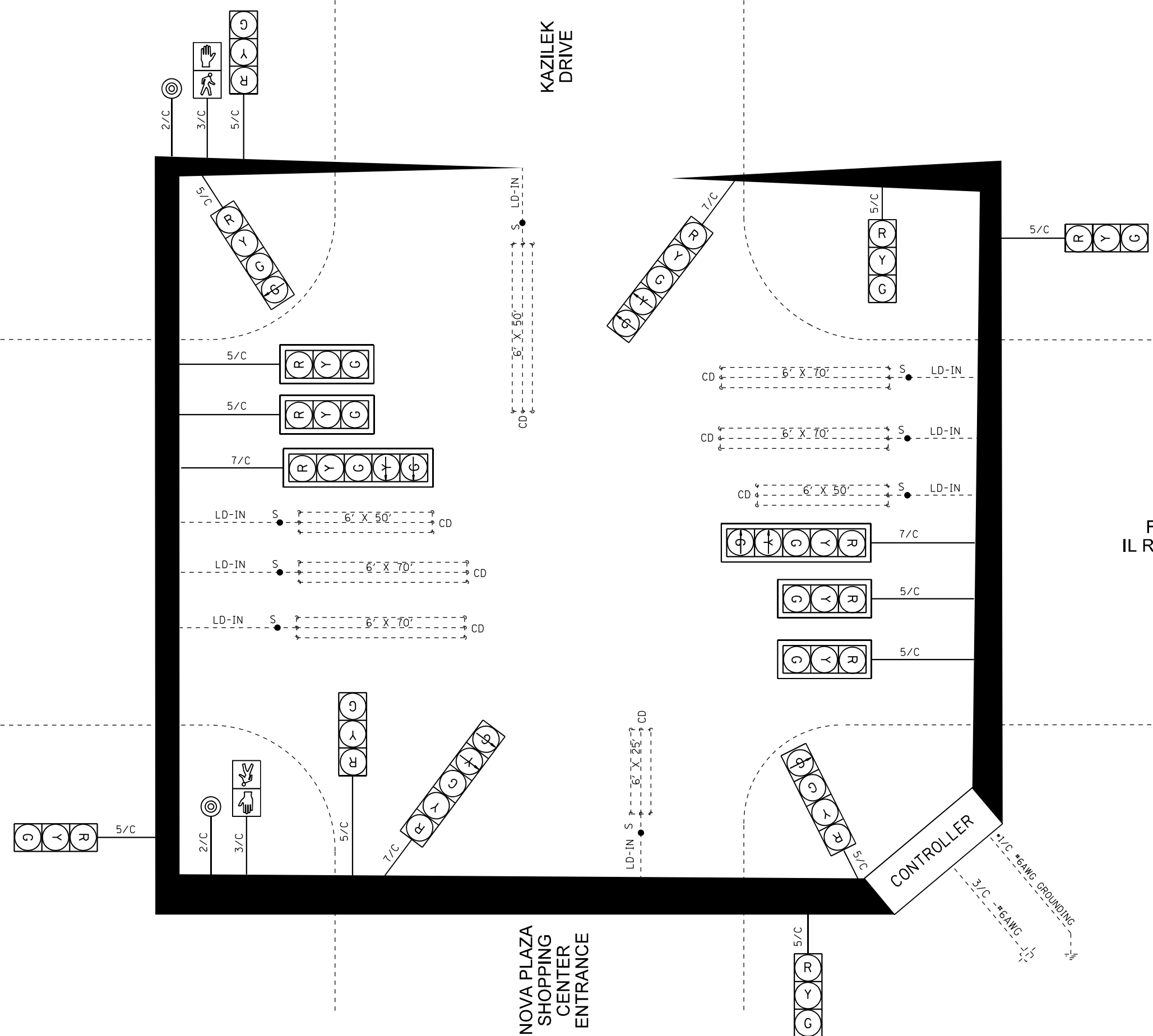


FAP 592
IL ROUTE 157

FAP 592
IL ROUTE 157

KAZILEK
DRIVE

NOVA PLAZA
SHOPPING
CENTER
ENTRANCE



MODEL: P:\p4\h\...
 FILE NAME: C:\Users\...
 MODEL: P:\p4\h\...
 FILE NAME: C:\Users\...

USER NAME = bschm	DESIGNED -	REVISED -
	DRAWN -	REVISED -
PLOT SCALE = 40,0000 * / in.	CHECKED -	REVISED -
PLOT DATE = 3/12/2021	DATE -	REVISED -

**STATE OF ILLINOIS
DEPARTMENT OF TRANSPORTATION**

**CABLE DIAGRAM
IL ROUTE 157 & KAZILEK DRIVE (CAHOKIA, IL)**

SCALE: N.T.S. SHEET 2 OF 2 SHEETS STA. TO STA.

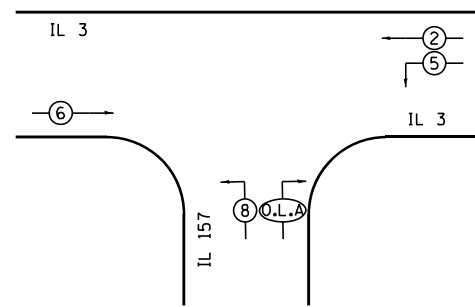
F.A. RTE.	SECTION	COUNTY	TOTAL SHEETS	SHEET NO.
**	Dist 8 TS MAR 2021-1	***	20	15
CONTRACT NO. 76P06				

ILLINOIS FED. AID PROJECT STP-NHPP-ARP3(302)
 ** VARIOUS ** VARIOUS *** MADISON / ST CLAIR

CONTROLLER PHASING

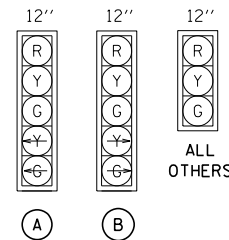
PHASE	1	2	3	4	5	6	7	8
MOVEMENT	NOT USED	← SB	NOT USED	NOT USED	↙ SBLT	→ NB	NOT USED	↘ WBLT
CONCURRENT MOVEMENT PERMITTED		5 OR 6			2	2		NONE

OVERLAP A (O.L.A.) WITH PHASES 5 AND 8



PHASE DESIGNATION DIAGRAM

TRAFFIC SIGNAL FACES



NOTES

- ALL UTILITIES PRESENT MAY NOT BE SHOWN. ALL UTILITIES SHOWN ARE APPROXIMATE. THE CONTRACTOR SHALL BE RESPONSIBLE FOR LOCATION, PROTECTION, AND COORDINATION OF EXISTING UTILITIES.
- ALL UNUSED AND/OR UNNECESSARY TRAFFIC SIGNAL CABLES SHALL BE COMPLETELY REMOVED FROM THE EXISTING CONDUIT SYSTEM, IF POSSIBLE, TO ENSURE ADEQUATE CONDUIT CAPACITY. ALL UNUSED CONDUITS SHALL BE REMOVED OR ABANDONED.
- PRIOR TO INSTALLING NEW TRAFFIC SIGNAL CABLES WITHIN EXISTING CONDUITS, THE CONTRACTOR SHALL BE RESPONSIBLE FOR DETERMINING IF NEW TRAFFIC SIGNAL CABLES CAN BE PULLED THROUGHOUT PERTINENT CONDUIT SEGMENTS WITHOUT AFFECTING THE OPERATION OF THE TRAFFIC SIGNAL. IF EXISTING CONDUIT CAPACITIES WILL PREVENT THE INSTALLATION OF THE NEW TRAFFIC SIGNAL CABLES WITHOUT AFFECTING THE OPERATION OF THE TRAFFIC SIGNAL, THE TRAFFIC SIGNAL WILL HAVE TO BE TEMPORARILY SHUT DOWN WHILE UNNECESSARY EXISTING SIGNAL CABLES ARE REMOVED AND NEW SIGNAL CABLES ARE INSTALLED.
- DENOTED EXISTING AND/OR PROPOSED CONDUITS SHALL BE UTILIZED TO ACCOMMODATE NEW SIGNAL CABLING REQUIRED FOR RELOCATION OF EXISTING TRAFFIC SIGNAL HEADS AND LED ILLUMINATED "LEFT-TURN" BLANK-OUT SIGN IN THE NORTHWEST QUADRANT FROM THE EXISTING TRAFFIC SIGNAL MAST ARM ASSEMBLY TO A NEW MAST ARM ASSEMBLY ON A NEW CONCRETE FOUNDATION.
- DENOTED EXISTING AND/OR PROPOSED CONDUITS SHALL BE UTILIZED TO ACCOMMODATE THE RELOCATION OF EXISTING SIGNAL CABLING ASSOCIATED WITH EXISTING SIGNAL HEADS CURRENTLY MOUNTED ON THE EXISTING MAST ARM ASSEMBLY IN THE SOUTHEAST QUADRANT TO A NEW MAST ARM ASSEMBLY ON A NEW CONCRETE FOUNDATION. EXISTING CABLING SHALL BE DISCONNECTED FROM EACH SIGNAL HEAD, PULLED BACK THROUGH THE EXISTING CONDUIT SYSTEM TO THE EXISTING HANDHOLE IN THE SOUTHEAST QUADRANT, REROUTED THROUGH THE PROPOSED CONDUIT AND BACK INTO THE NEW MAST ARM ASSEMBLY, WHERE THE RELOCATED EXISTING SIGNAL HEADS SHALL BE RECONNECTED.
- THE CONTRACTOR SHALL REMOVE AND REPLACE PORTIONS OF EXISTING CONCRETE MEDIAN SURFACE DURING INSTALLATION OF PROPOSED SIGNAL FOUNDATION AND CONDUIT.
- DENOTED EXISTING CONDUITS CONTAIN CABLING FOR EXISTING VEHICULAR DETECTION LOOPS. NO MODIFICATIONS TO THE EXISTING STOP BAR AND/OR ADVANCED DETECTION LOOPS ARE ANTICIPATED AS A PART OF THIS PROJECT. THE CONTRACTOR SHALL ENSURE ALL VEHICULAR DETECTION LOOPS REMAIN FULLY OPERATIONAL AT ALL TIMES.

TRAFFIC SIGNAL LEGEND

- EXISTING TRAFFIC SIGNAL CONTROLLER CABINET
- EXISTING SERVICE INSTALLATION (POLE MTD.)
- EXISTING SIGNAL HEAD (NO BACKPLATE)
- EXISTING SIGNAL HEAD (WITH BACKPLATE)
- EXISTING HANDHOLE
- EXISTING DOUBLE HANDHOLE
- EXISTING TRAFFIC SIGNAL POST
- PROPOSED TRAFFIC SIGNAL POST
- EXISTING STEEL MAST ARM ASSEMBLY AND POLE
- PROPOSED STEEL MAST ARM ASSEMBLY AND POLE
- EXISTING UNDERGROUND CONDUIT
- PROPOSED UNDERGROUND CONDUIT
- L.E.D. ILLUMINATED LEFT-TURN SIGN
- POLE OR MAST ARM MOUNTED SIGN
- ITEM TO BE ABANDONED
- EXISTING LOOP DETECTION ZONE

MODEL IL 3 and Route 157.dwg
 FILE NAME: S:\projects\2021\119-003251E-11\DOT_DB_Signals\119-003251E-11\DOT_DB_Signals\119-003251E-11.dwg
 11/19/2021 10:15:11 AM
 USER: SAJZEBARI
 PLOT DATE: 2/9/2021

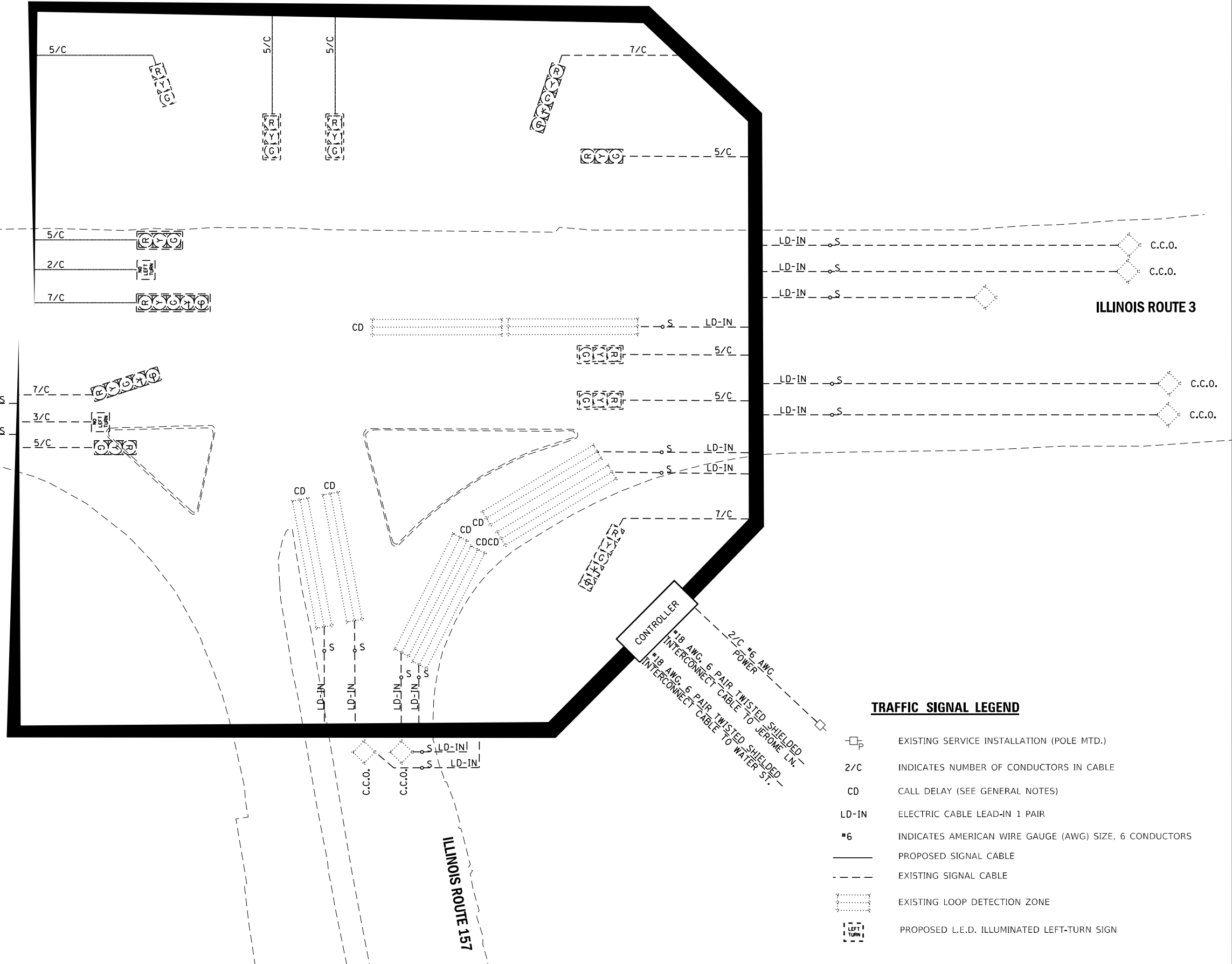
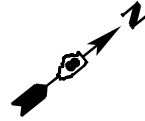


USER NAME = SAJZEBARI	DESIGNED -	REVISED -
PLOT SCALE = 40.0000" / 1"	DRAWN -	REVISED -
PLOT DATE = 2/9/2021	CHECKED -	REVISED -
	DATE -	REVISED -

**STATE OF ILLINOIS
DEPARTMENT OF TRANSPORTATION**

TRAFFIC SIGNAL MODIFICATION PLAN IL ROUTE 3 & IL ROUTE 157 (CAHOKIA, IL)	
SCALE: 1"=20'	SHEET 1 OF 2 SHEETS STA. TO STA.

F.A. RTE.	SECTION	COUNTY	TOTAL SHEETS	SHEET NO.
**	DIST 8 TS MAR 2021-1	***	20	16
CONTRACT NO. 76P06				
ILLINOIS FED. AID PROJECT STP-NHPP-ARP3(302)				
* VARIOUS ** VARIOUS *** MADISON / ST CLAIR				



ILLINOIS ROUTE 3

ILLINOIS ROUTE 3

ILLINOIS ROUTE 157

TRAFFIC SIGNAL LEGEND

- EXISTING SERVICE INSTALLATION (POLE MTD.)
- 2/C INDICATES NUMBER OF CONDUCTORS IN CABLE
- CD CALL DELAY (SEE GENERAL NOTES)
- LD-IN ELECTRIC CABLE LEAD-IN 1 PAIR
- *6 INDICATES AMERICAN WIRE GAUGE (AWG) SIZE, 6 CONDUCTORS
- PROPOSED SIGNAL CABLE
- - - EXISTING SIGNAL CABLE
- EXISTING LOOP DETECTION ZONE
- PROPOSED L.E.D. ILLUMINATED LEFT-TURN SIGN

CONTROLLER
 *18 AWG, 6 PAIR TWISTED SHIELDED INTERCONNECT CABLE TO JEROME LN.
 *18 AWG, 6 PAIR TWISTED SHIELDED INTERCONNECT CABLE TO WATER ST.
 2/C *6 AWG POWER

MODEL: IL_3_157_Route_157_Cable_Diagram
 FILE NAME: S:\03\032019_Planetree\418_Folder_Verzion_01_X.dwg
 419,00321TE_IDOT_DB_Signals\TS_On-cdm\NO_#31\CAD\Sheet.dgn



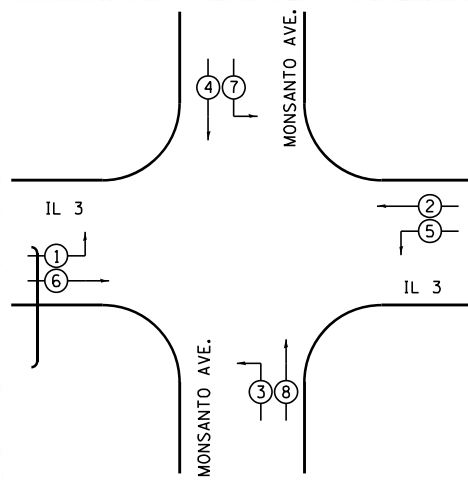
USER NAME = SAJzebari	DESIGNED -	REVISED -
	DRAWN -	REVISED -
PLOT SCALE = 40,0000 * / in.	CHECKED -	REVISED -
PLOT DATE = 2/9/2021	DATE -	REVISED -

STATE OF ILLINOIS
 DEPARTMENT OF TRANSPORTATION

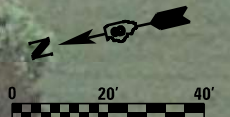
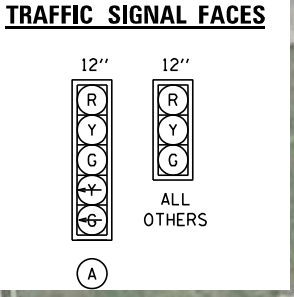
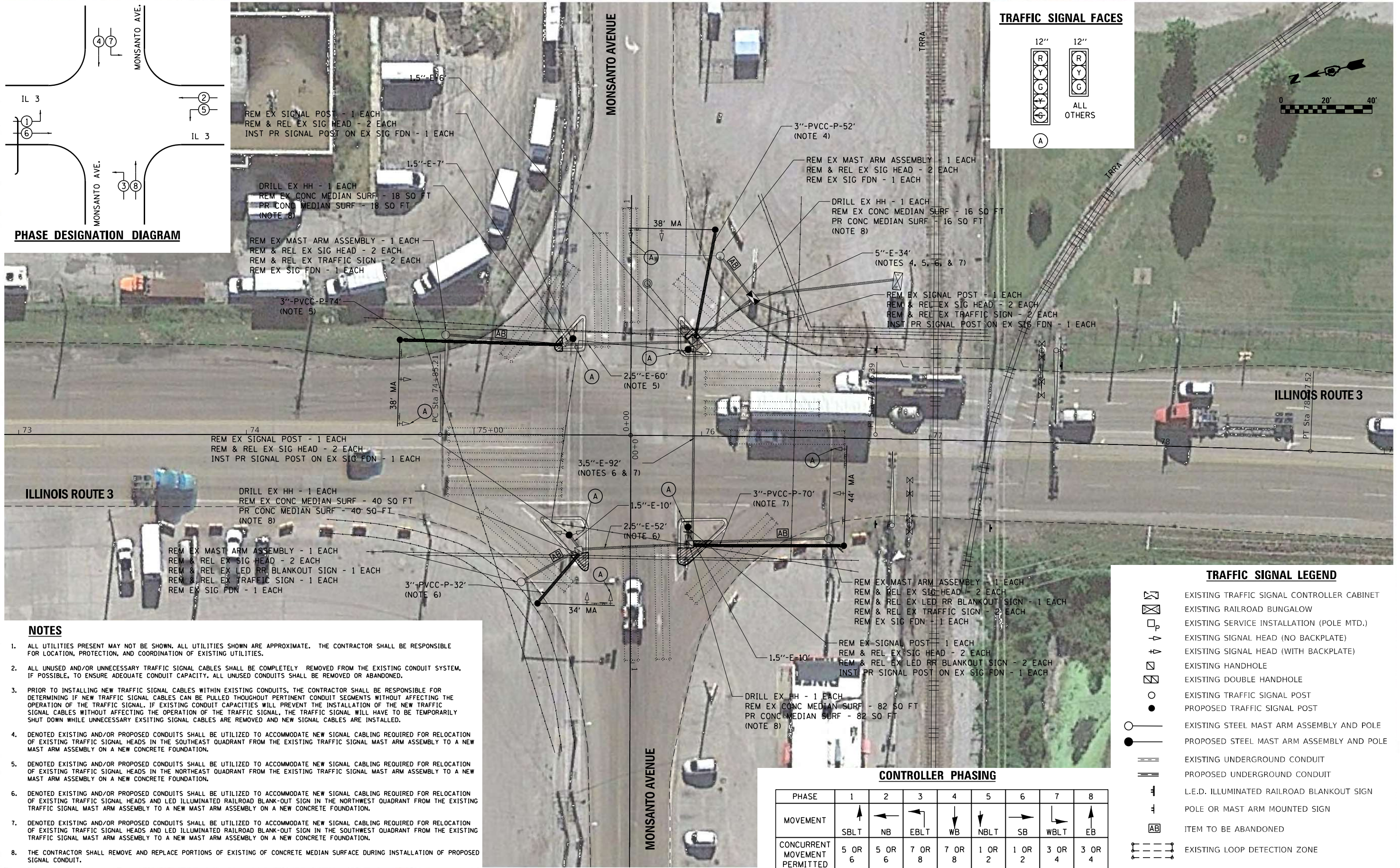
CABLE DIAGRAM			
IL ROUTE 3 & IL ROUTE 157 (CAHOKIA, IL)			
SCALE: NTS	SHEET 2	OF 2 SHEETS	STA. TO STA.

F.A. RTE.	SECTION	COUNTY	TOTAL SHEETS	SHEET NO.
**	DIST 8 TS MAR 2021-1	***	20	17
CONTRACT NO. 76P06				
ILLINOIS FED. AID PROJECT STP#NHPPARP3(302)				

* VARIOUS ** VARIOUS *** MADISON / ST CLAIR



PHASE DESIGNATION DIAGRAM



- NOTES**
- ALL UTILITIES PRESENT MAY NOT BE SHOWN. ALL UTILITIES SHOWN ARE APPROXIMATE. THE CONTRACTOR SHALL BE RESPONSIBLE FOR LOCATION, PROTECTION, AND COORDINATION OF EXISTING UTILITIES.
 - ALL UNUSED AND/OR UNNECESSARY TRAFFIC SIGNAL CABLES SHALL BE COMPLETELY REMOVED FROM THE EXISTING CONDUIT SYSTEM, IF POSSIBLE, TO ENSURE ADEQUATE CONDUIT CAPACITY. ALL UNUSED CONDUITS SHALL BE REMOVED OR ABANDONED.
 - PRIOR TO INSTALLING NEW TRAFFIC SIGNAL CABLES WITHIN EXISTING CONDUITS, THE CONTRACTOR SHALL BE RESPONSIBLE FOR DETERMINING IF NEW TRAFFIC SIGNAL CABLES CAN BE PULLED THROUGHOUT PERTINENT CONDUIT SEGMENTS WITHOUT AFFECTING THE OPERATION OF THE TRAFFIC SIGNAL. IF EXISTING CONDUIT CAPACITIES WILL PREVENT THE INSTALLATION OF THE NEW TRAFFIC SIGNAL CABLES WITHOUT AFFECTING THE OPERATION OF THE TRAFFIC SIGNAL, THE TRAFFIC SIGNAL WILL HAVE TO BE TEMPORARILY SHUT DOWN WHILE UNNECESSARY EXISTING SIGNAL CABLES ARE REMOVED AND NEW SIGNAL CABLES ARE INSTALLED.
 - DENOTED EXISTING AND/OR PROPOSED CONDUITS SHALL BE UTILIZED TO ACCOMMODATE NEW SIGNAL CABLING REQUIRED FOR RELOCATION OF EXISTING TRAFFIC SIGNAL HEADS IN THE SOUTHEAST QUADRANT FROM THE EXISTING TRAFFIC SIGNAL MAST ARM ASSEMBLY TO A NEW MAST ARM ASSEMBLY ON A NEW CONCRETE FOUNDATION.
 - DENOTED EXISTING AND/OR PROPOSED CONDUITS SHALL BE UTILIZED TO ACCOMMODATE NEW SIGNAL CABLING REQUIRED FOR RELOCATION OF EXISTING TRAFFIC SIGNAL HEADS IN THE NORTHEAST QUADRANT FROM THE EXISTING TRAFFIC SIGNAL MAST ARM ASSEMBLY TO A NEW MAST ARM ASSEMBLY ON A NEW CONCRETE FOUNDATION.
 - DENOTED EXISTING AND/OR PROPOSED CONDUITS SHALL BE UTILIZED TO ACCOMMODATE NEW SIGNAL CABLING REQUIRED FOR RELOCATION OF EXISTING TRAFFIC SIGNAL HEADS AND LED ILLUMINATED RAILROAD BLANK-OUT SIGN IN THE NORTHWEST QUADRANT FROM THE EXISTING TRAFFIC SIGNAL MAST ARM ASSEMBLY TO A NEW MAST ARM ASSEMBLY ON A NEW CONCRETE FOUNDATION.
 - DENOTED EXISTING AND/OR PROPOSED CONDUITS SHALL BE UTILIZED TO ACCOMMODATE NEW SIGNAL CABLING REQUIRED FOR RELOCATION OF EXISTING TRAFFIC SIGNAL HEADS AND LED ILLUMINATED RAILROAD BLANK-OUT SIGN IN THE SOUTHWEST QUADRANT FROM THE EXISTING TRAFFIC SIGNAL MAST ARM ASSEMBLY TO A NEW MAST ARM ASSEMBLY ON A NEW CONCRETE FOUNDATION.
 - THE CONTRACTOR SHALL REMOVE AND REPLACE PORTIONS OF EXISTING OF CONCRETE MEDIAN SURFACE DURING INSTALLATION OF PROPOSED SIGNAL CONDUIT.

- TRAFFIC SIGNAL LEGEND**
- EXISTING TRAFFIC SIGNAL CONTROLLER CABINET
 - EXISTING RAILROAD BUNGALOW
 - EXISTING SERVICE INSTALLATION (POLE MTD.)
 - EXISTING SIGNAL HEAD (NO BACKPLATE)
 - EXISTING SIGNAL HEAD (WITH BACKPLATE)
 - EXISTING HANDHOLE
 - EXISTING DOUBLE HANDHOLE
 - EXISTING TRAFFIC SIGNAL POST
 - PROPOSED TRAFFIC SIGNAL POST
 - EXISTING STEEL MAST ARM ASSEMBLY AND POLE
 - PROPOSED STEEL MAST ARM ASSEMBLY AND POLE
 - EXISTING UNDERGROUND CONDUIT
 - PROPOSED UNDERGROUND CONDUIT
 - L.E.D. ILLUMINATED RAILROAD BLANKOUT SIGN
 - POLE OR MAST ARM MOUNTED SIGN
 - ITEM TO BE ABANDONED
 - EXISTING LOOP DETECTION ZONE

CONTROLLER PHASING

PHASE	1	2	3	4	5	6	7	8
MOVEMENT	↑	←	↙	↓	↘	→	↗	↑
CONCURRENT MOVEMENT PERMITTED	5 OR 6	5 OR 6	7 OR 8	7 OR 8	1 OR 2	1 OR 2	3 OR 4	3 OR 4



USER NAME = SAJzebari	DESIGNED -	REVISED -
PLOT SCALE = 40.0000 ' / in.	DRAWN -	REVISED -
PLOT DATE = 2/9/2021	CHECKED -	REVISED -
	DATE -	REVISED -

**STATE OF ILLINOIS
DEPARTMENT OF TRANSPORTATION**

**TRAFFIC SIGNAL MODIFICATION PLAN
IL ROUTE 3 & MONSANTO AVENUE (SAUGET, IL)**

SCALE: 1"=20' SHEET 1 OF 2 SHEETS STA. TO STA.

F.A. RTE.	SECTION	COUNTY	TOTAL SHEETS	SHEET NO.
**	DIST 8 T5 MAR 2021-1	***	20	18

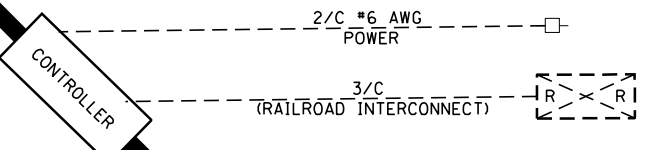
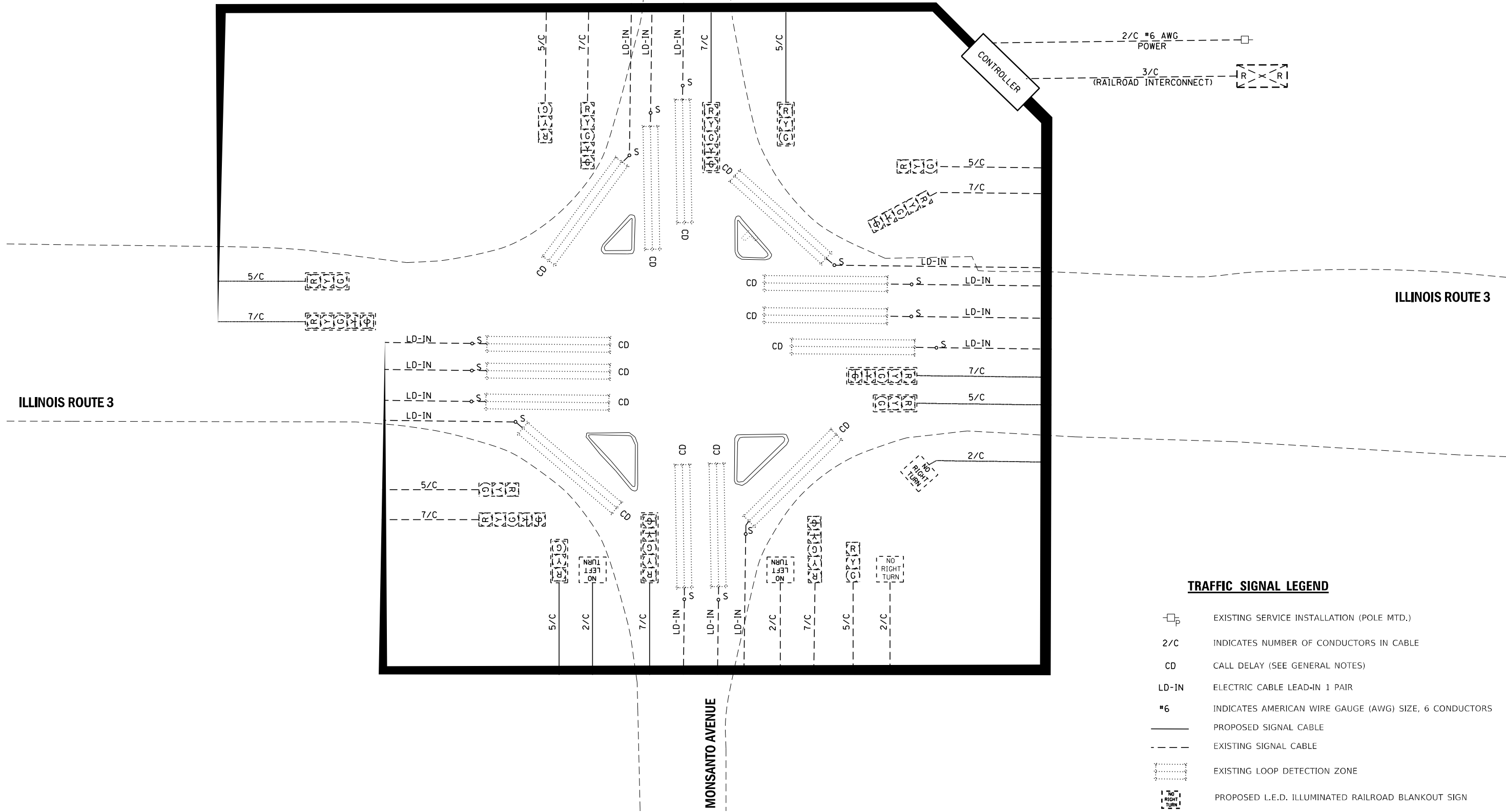
CONTRACT NO. 76P06

ILLINOIS FED. AID PROJECT STP-NHPP-ARP3(302)
* VARIOUS ** VARIOUS *** MADISON / ST CLAIR



MONSANTO AVENUE

MONSANTO AVENUE



TRAFFIC SIGNAL LEGEND

- EXISTING SERVICE INSTALLATION (POLE MTD.)
- 2/C INDICATES NUMBER OF CONDUCTORS IN CABLE
- CD CALL DELAY (SEE GENERAL NOTES)
- LD-IN ELECTRIC CABLE LEAD-IN 1 PAIR
- #6 INDICATES AMERICAN WIRE GAUGE (AWG) SIZE, 6 CONDUCTORS
- PROPOSED SIGNAL CABLE
- - - EXISTING SIGNAL CABLE
- EXISTING LOOP DETECTION ZONE
- PROPOSED L.E.D. ILLUMINATED RAILROAD BLANKOUT SIGN

ILLINOIS ROUTE 3

ILLINOIS ROUTE 3

MODEL: Monsanto_CableDiagram.dwg
 FILE: I:\Users\SAZ\Documents\2021\DOT_DB_Signals\IS_Or-cad\INVO_#313\CAD\Sheet.dwg
 4/19/2021 10:15:11 AM Use: A1B Falck: Version: 01, X: ddrive



USER NAME = SAZebari	DESIGNED -	REVISED -
PLOT SCALE = 40.0000' / in.	DRAWN -	REVISED -
PLOT DATE = 2/9/2021	CHECKED -	REVISED -
	DATE -	REVISED -

**STATE OF ILLINOIS
DEPARTMENT OF TRANSPORTATION**

**CABLE DIAGRAM
IL ROUTE 3 & MONSANTO AVENUE (SAUGET, IL)**

SCALE: NTS SHEET 2 OF 2 SHEETS STA. TO STA.

F.A. RTE.	SECTION	COUNTY	TOTAL SHEETS	SHEET NO.
**	DIST 8 TS MAR 2021-1	***	20	19
CONTRACT NO. 76P06				

ILLINOIS FED. AID PROJECT STP-NHPP-ARP3(302)
 - VARIOUS ** VARIOUS *** MADISON / ST CLAIR

