

INDEX OF SHEETS 06-11-2021 LETTING ITEM 201

- 01 COVER SHEET
- 02 GENERAL NOTES AND COMMITMENTS
- 03 SUMMARY OF QUANTITIES
- 04 TYPICAL SECTIONS
- 05 SCHEDULES OF QUANTITIES
- 06-08 REMOVAL PLAN
- 09-11 ROADWAY PLAN
- 12 MISCELLANEOUS DETAILS

LIST OF STANDARDS

- 000001-08 STANDARD SYMBOLS, ABBREVIATIONS AND PATTERNS
- 001006 DECIMAL OF AN INCH AND OF A FOOT
- 424011-04 CORNER PARALLEL CURB RAMPS FOR SIDEWALKS
- 424021-06 DEPRESSED CORNER FOR SIDEWALKS
- 442201-03 CLASS C AND D PATCHES
- 604001-05 FRAME AND LID TYPE 1
- 604006-05 FRAME & GRATE TYPE 3
- 606001-07 CONCRETE CURB TYPE B & COMBINATION CONCRETE CURB & GUTTER
- 701301-04 LANE CLOSURE 2L, 2W, SHORT TIME OPERATIONS
- 701311-03 LANE CLOSURE 2L, 2W, MOVING OPERATIONS-DAY ONLY
- 701501-06 URBAN LANE CLOSURE 2L, 2W, UNDIVIDED
- 701701-10 URBAN LANE CLOSURE, MULTILANE INTERSECTION
- 701801-06 SIDEWALK, CORNER OR CROSSWALK CLOSURE
- 701901-08 TRAFFIC CONTROL DEVICES
- 780001-05 TYPICAL PAVEMENT MARKINGS

STATE OF ILLINOIS
DEPARTMENT OF TRANSPORTATION
PLANS FOR PROPOSED
FAU ROUTE 9215
CITY OF EAST SAINT LOUIS
COLLINSVILLE AVE. IMPROVEMENTS
SEC 17-00213-01-RS
PROJECT NO ZHIV (128)
JOB NO. C-98-007-21
ST. CLAIR COUNTY
STP-S FUNDS

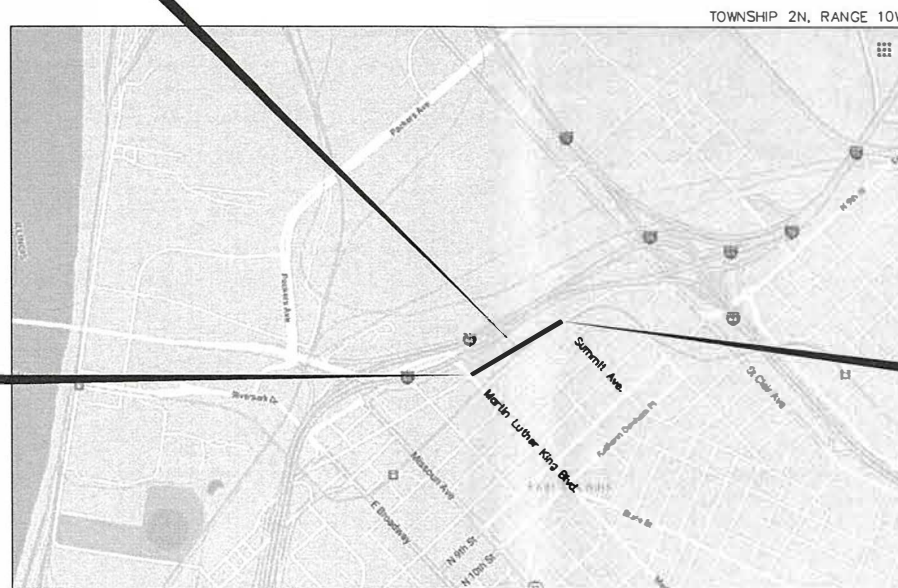
F.A.U. RTE	SECTION	COUNTY	TOTAL SHEETS	SHEET NO.
9215	17-00213-01-RS	ST. CLAIR	12	01
FEDERAL-AID PROJECT			CONTRACT NO. 97759	



PROJECT LOCATION

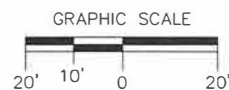
ST. CLAIR COUNTY
LOCATION OF SECTION INDICATED THUS -

PROJECT LOCATION



BEGIN CONSTRUCTION
STA. 0+16.21
(MARTIN LUTHER KING BLVD.)

END CONSTRUCTION
STA. 15+81.04
(SUMMIT AVE.)



GRAPHICAL SCALES TO BE USED ARE SHOWN ACCORDINGLY ON EACH PLAN SHEET

UTILITY OWNERS

- WATER: ILLINOIS AMERICAN WATER COMPANY
100 NORTH WATERWORK DRIVE
BELLEVILLE, ILLINOIS 62223
618/277-7450
- GAS: ILLINOIS POWER COMPANY
330 NORTH 29TH ST.
EAST ST. LOUIS, ILLINOIS 62202
800/755-5000
- ELECTRIC: AMEREN-UE COMPANY
500 EAST BROADWAY
EAST ST. LOUIS, ILLINOIS 62203
618/482-2214
- TELEPHONE: ILLINOIS BELL TELEPHONE COMPANY
203 GOETHE
COLLINSVILLE, ILLINOIS 62234
618/346-6400
- CABLE T.V.: CHARTER COMMUNICATIONS
317 WEST MAIN STREET
BELLEVILLE, IL 62220
618/277-2288

J.U.L.I.E. (800) 892-0123
E. ST. LOUIS TOWNSHIP
CITY OF E. ST. LOUIS, IL.

LOCATION MAP

NO SCALE

DESIGNATION: MINOR ARTERIAL
ADT = 1550
GROSS PROJECT LENGTH = 1564.83 FEET (0.296 MILES)
NET PROJECT LENGTH = 1564.83 FEET (0.296 MILES)
DESIGN SPEED = 25 MPH

SCALES:

ROADWAY PLANS 1 INCH = 20 FEET



Samantha M. Soto
SAMANTHA M. SOTO
ILLINOIS P.E. NO. 062-066034
EXPIRES: 11-30-21
DATE 4/7/2021

STATE OF ILLINOIS DEPARTMENT OF TRANSPORTATION	
APPROVED: <i>R. Eastern</i>	4-7-2021
ROBERT EASTERN, III, MAYOR, CITY OF EAST ST. LOUIS	
PASSED: <i>Keith Robertson</i>	April 9, 2021
DISTRICT 8 PROJECT IMPLEMENTATION ENGINEER	
RELEASING FOR BID BASED ON LIMITED REVIEW	April 9, 2021
Keith Robertson REGION 5 ENGINEER	



HURST-ROSCH, INC
5 Bank Square
E. St. Louis, IL
618.398.0890 t

PRINTED BY AUTHORITY OF THE STATE OF ILLINOIS

GENERAL NOTES:

1. ALL STATIONING REFERS TO THE CENTERLINE OF NEW CONSTRUCTION.
2. THE LOCATIONS AND/OR DEPTHS OF UNDERGROUND UTILITIES SHOWN HAVE BEEN TAKEN FROM AVAILABLE RECORD INFORMATION AND MUST BE CONSIDERED APPROXIMATE. FIELD MARKING OF UTILITIES IN CRITICAL AREAS MAY BE OBTAINED BY PROVIDING A MINIMUM OF 48 HOURS ADVANCE NOTICE OF J.U.L.I.E. AT (800) 892-0123.
3. THE FOLLOWING CONSTANTS WERE USED IN THE CALCULATIONS OF QUANTITIES FOR THIS PROJECT:
 - HMA SURFACE COURSE, MIX "C" N70 – 112 LBS. / SQ. YD. / INCH THICKNESS
 - BITUMINOUS MATERIALS (TACK COAT) – 0.05 LBS./SQ. FT.
4. THE EXISTING RIGHT OF WAY LINES / PROPERTY LINES AND WIDTHS SHOWN ON THE PLAN SHEETS WERE TAKEN FROM EXISTING INFORMATION. THE LOCATIONS SHOWN ARE FOR INFORMATIONAL PURPOSES ONLY AND SHOULD BE CONSIDERED APPROXIMATE.
5. EXISTING SEWERS AND STRUCTURES ARE APPROXIMATE ONLY. THE CONTRACTOR SHALL FIELD VERIFY LOCATIONS PRIOR TO ANY CONSTRUCTION.
6. ALL EXISTING STORM STRUCTURES AND SEWER LINES TO BE USED IN PLACE UNLESS OTHERWISE NOTED. ALL EXISTING STRUCTURES AND SEWERS ARE TO BE PROTECTED. ANY DAMAGE TO EXISTING STRUCTURES OR SEWERS WILL BE REPAIRED OR REPLACED AT THE CONTRACTORS EXPENSE.
7. WATER METERS WHICH MAY NEED TO BE ADJUSTED SHOULD BE COORDINATED WITH UTILITLY. THE CONTRACTOR IS RESPONSIBLE TO COORDINATE THIS WORK. THE CONTRACTOR WILL NOT BE COMPENSATED FOR ANY DAMAGE TO OR COST INCURRED FOR THIS WORK.
8. "ROAD CONSTRUCTION AHEAD" SIGNS SHALL BE PLACED AT EACH END OF THE PROJECT AND AT ALL INTERSECTING SIDE ROADS. ADVANCE WARNING SIGNS SHALL BE 48" FLUORESCENT ORANGE. COST TO BE INCLUDED IN THE TRAFFIC CONTROL PAY ITEM.
9. PAVEMENT REHABILITATION AREA CONSISTS OF PAVEMENT PATCHES, AREA CRACK CONTROL TREATMENT AND PAVEMENT OVERLAY WITH 2" HMA SURFACE COURSE. AREA OF PAVEMENT PATCHES WAS ESTIMATED BASED ON FIELD SURVEY AT TIME OF PLANS AND THE ACTUAL QUANTITY MAY DIFFER AT TIME OF CONSTRUCTION. PATCHING WILL BE DETERMINED BY ENGINEER AND CONTRACTOR AT TIME OF CONSTRUCTION.

COMMITMENTS:

CONSTRUCTION MONITORING

THE CONTRACTOR SHALL CONTACT ILLINOIS STATE ARCHAEOLOGICAL SURVEY (ISAS) PERSONNEL WITHIN 48 HOURS PRIOR TO ANY EXCAVATION OPERATIONS WITHIN THE PROJECT LIMITS. ISAS PERSONNEL MUST ATTEND THE PRECONSTRUCTION MEETING TO DISCUSS MONITORING PROCEDURES AND SAFETY PROTOCOLS WITH IDOT STAFF AND THE CONTRACTOR. ISAS PERSONNEL WILL MONITOR PROJECT EXCAVATIONS AND WILL HAVE THE AUTHORITY TO HALT EXCAVATIONS FOR NO LONGER THAN TWO WORKING DAYS (OR 48 HOURS) TO DOCUMENT AND REMOVE ARCHAEOLOGICAL MATERIALS. HOWEVER, IF HUMAN REMAINS ARE DISCOVERED, CONSTRUCTION WILL BE HALTED UNTIL APPROVAL TO RESUME CONSTRUCTION IS PROVIDED BY IDOT IN COORDINATION WITH THE ILLINOIS STATE BURIAL LAW COORDINATOR, PER THE ILLINOIS HUMAN SKELETAL REMAIN PROTECTION ACT (20 ILCS 3440).



Hurst-Rosche, Inc.
PROFESSIONAL DESIGN NUMBER: 18-00298

5 Bank Square
E. St. Louis, IL
618.398.0890 t
www.hurst-rosche.com

HILLSBORO, IL
MARION, IL
SPRINGFIELD, IL
ARNOLD, MO
NEOSHO, MO
NASHVILLE, TN

PREPARED FOR:

CONTRACT NO 97759
SEC NO 17-00213-01-RS

PHASE 1 COLLINSVILLE AVE. IMPROVEMENTS
CITY OF EAST ST. LOUIS
ST. CLAIR COUNTY, ILLINOIS

MARK	DATE	DESCRIPTION
	04/2021	

PROJECT NO: 220-1549
DESIGN: SMS DRAWN: SMS CHECK: JJC

GENERAL NOTES
AND
COMMITMENTS

02 SHEET 02 OF 12

CONTROL POINTS

POINT NO.	NORTHING	EASING	ELEVATION	DESCRIPTION
1	715321.53	504558.86	418.92	60 SPIKE
2	714837.86	503936.31	414.88	60 SPIKE
3	714521.32	503403.74	414.75	60 SPIKE

SUMMARY OF QUANTITIES

CODE NO.	ITEM	UNIT	TOTAL
20200100	EARTH EXCAVATION	CU YD	251
25000210	SEEDING, CLASS 2A	ACRE	0.25
25000400	NITROGEN FERTILIZER NUTRIENT	FOUND	23
25000500	PHOSPHORUS FERTILIZER NUTRIENT	FOUND	23
25000600	POTASSIUM FERTILIZER NUTRIENT	FOUND	23
25100115	MULCH METHOD 2	ACRE	0.25
35100500	AGGREGATE BASE COURSE, TYPE A 6"	SQ YD	229
40200700	AGGREGATE SURFACE COURSE, TYPE A 8"	SQ YD	15
40600290	BITUMINOUS MATERIALS (TACK COAT)	FOUND	2913
40600985	PORTLAND CEMENT CONCRETE SURFACE REMOVAL - BUTT JOINT	SQ YD	110
40600990	TEMPORARY RAMP	SQ YD	59
40604052	HOT-MIX ASPHALT SURFACE COURSE, IL-9.5, MIX "C", N70	TON	725
42001300	PROTECTIVE COAT	SQ YD	359
42300200	PORTLAND CEMENT CONCRETE DRIVEWAY PAVEMENT, 6 INCH	SQ YD	27
42300400	PORTLAND CEMENT CONCRETE DRIVEWAY PAVEMENT, 8 INCH	SQ YD	202
42400100	PORTLAND CEMENT CONCRETE SIDEWALK 4 INCH	SQ FT	13828
42400300	PORTLAND CEMENT CONCRETE SIDEWALK 6 INCH	SQ FT	1637
42400800	DETECTABLE WARNINGS	SQ FT	96
44000100	PAVEMENT REMOVAL	SQ YD	13
44000200	DRIVEWAY PAVEMENT REMOVAL	SQ YD	213
44000300	CURB REMOVAL	FOOT	2370
44000500	COMBINATION CURB AND GUTTER REMOVAL	FOOT	96
44000600	SIDEWALK REMOVAL	SQ FT	13016
44200089	PAVEMENT PATCHING, TYPE I, 8 INCH	SQ YD	108
44200094	PAVEMENT PATCHING, TYPE II, 8 INCH	SQ YD	213
44200099	PAVEMENT PATCHING, TYPE III, 8 INCH	SQ YD	38
44200101	PAVEMENT PATCHING, TYPE IV, 8 INCH	SQ YD	271
44300100	AREA REFLECTIVE CRACK CONTROL TREATMENT	SQ YD	6474
56109210	WATER VALVES TO BE ADJUSTED	EACH	5
60255500	MANHOLES TO BE ADJUSTED	EACH	14
60260100	INLETS TO BE ADJUSTED	EACH	4
60260500	INLETS TO BE ADJUSTED WITH NEW TYPE 3 FRAME AND GRATE	EACH	2
60600605	CONCRETE CURB, TYPE B	FOOT	2337
60605000	COMBINATION CONCRETE CURB AND GUTTER, TY B-6.24	FOOT	98
67100100	MOBILIZATION	L SUM	1
72400100	REMOVE SIGN PANEL ASSEMBLY - TYPE A	EACH	1
72400500	RELOCATE SIGN PANEL ASSEMBLY - TYPE A	EACH	1
78000200	* THERMOPLASTIC PAVEMENT MARKING - LINE 4"	FOOT	2850
78000600	* THERMOPLASTIC PAVEMENT MARKING -LINE 12"	FOOT	404
78000850	* THERMOPLASTIC PAVEMENT MARKING -LINE 24"	FOOT	20
X7010216	TRAFFIC CONTROL AND PROTECTION, (SPECIAL)	L SUM	1
Δ 20076605	TRAINEES	HouR	500
Δ 20076604	TRAINEES TRAINING PROGRAM GRADUATE	HouR	500
	* SPECIALTY ITEMS		

Δ 0042



Hurst-Rosche, Inc.
PROFESSIONAL DESIGN NUMBER: 18-00228

5 Bank Square
E. St. Louis, IL
618.398.0890 t
www.hurst-rosche.com

HILLSBORO, IL
MARION, IL
SPRINGFIELD, IL
ARNOLD, MO
NEOSHO, MO
NASHVILLE, TN

PREPARED FOR:

CONTRACT NO 97759
SEC NO 17-00213-01-RS

PHASE 1 COLLINSVILLE AVE. IMPROVEMENTS
CITY OF EAST ST. LOUIS
ST. CLAIR COUNTY, ILLINOIS

MARK	DATE	DESCRIPTION
	04/2021	

PROJECT NO: 220-1549
DESIGN: SMS DRAWN: SMS CHECK: JJC

SUMMARY OF QUANTITIES

03

SHEET 03 OF 12



Hurst-Rosche, Inc.
PROFESSIONAL DESIGN NUMBER: 18-00229

5 Bank Square
E. St. Louis, IL
618.398.0890 t
www.hurst-rosche.com

HILLSBORO, IL
MARION, IL
SPRINGFIELD, IL
ARNOLD, MO
NEOSHO, MO
NASHVILLE, TN

PREPARED FOR:

CONTRACT NO 97759
SEC NO 17-00213-01-RS

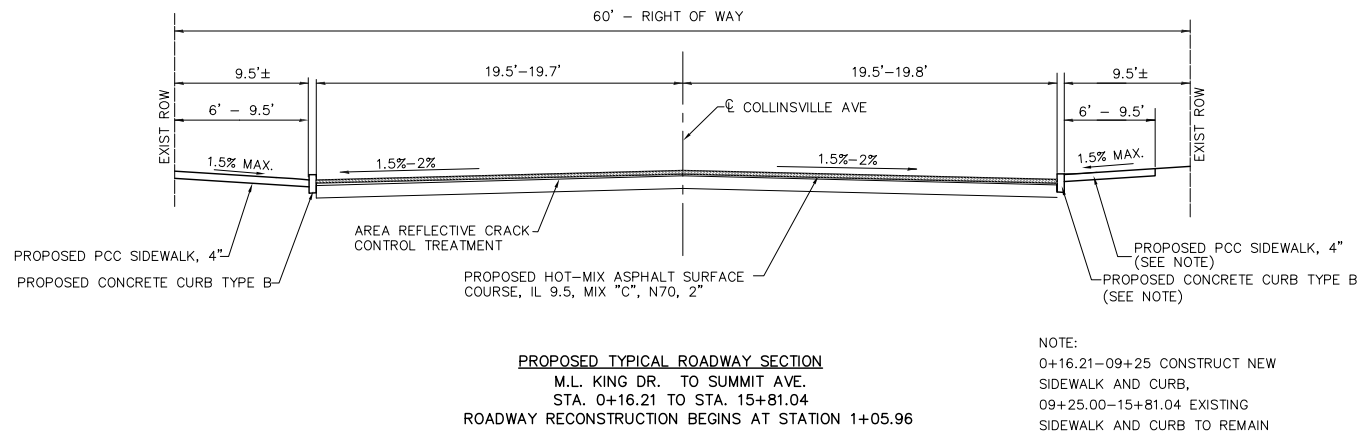
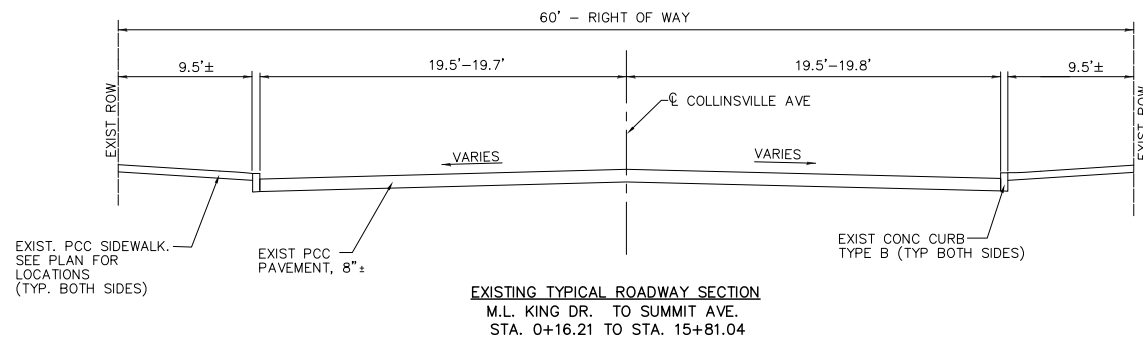
PHASE 1 COLLINSVILLE AVE. IMPROVEMENTS
CITY OF EAST ST. LOUIS
ST. CLAIR COUNTY, ILLINOIS

MARK	DATE	DESCRIPTION
	04/2021	

PROJECT NO: 220-1549		
DESIGN: SMS	DRAWN: SMS	CHECK: JJC

TYPICAL SECTIONS

04
SHEET 04 OF 12



MIXTURE TABLE

LOCATION	10TH STREET
MIXTURE USE	SURFACE COURSE
PG	PG 64-22
RAP % (MAX)	*
DESIGN AIR VOIDS	4.0% @ Ndes=70
MIX COMPOSITION (GRADATION MIXTURE)	IL-9.5
FRICTION AGGREGATE	MIXTURE "C"
MIXTURE WEIGHT	112 LBS/SQ. YD./IN.

* SEE SPECIAL PROVISIONS



Hurst-Rosche, Inc.

PROFESSIONAL DESIGN NUMBER: 18-001028

5 Bank Square
E. St. Louis, IL
618.398.0890 t
www.hurst-rosche.com

HILLSBORO, IL
MARION, IL
SPRINGFIELD, IL
ARNOLD, MO
NEOSHO, MO
NASHVILLE, TN

PREPARED FOR:

CONTRACT NO 97759
SEC NO 17-00213-01-RS

PHASE 1 COLLINSVILLE AVE. IMPROVEMENTS
CITY OF EAST ST. LOUIS
ST. CLAIR COUNTY, ILLINOIS

MARK	DATE	DESCRIPTION
	04/2021	

PROJECT NO: 220-1549
DESIGN: SMS
DRAWN: SMS
CHECK: JUC

SCHEDULES OF QUANTITIES

PAVEMENT PATCHING, TYPE II, 8 INCH		
COLLINSVILLE AVE		
Station	OFFSET	SQ YD
1+67	LT	6.7
2+21	RT	5.3
2+21	CL	10
2+66	CL	6.7
3+04	CL	6.2
3+11	LT	5.4
3+23	CL	8.9
4+71	CL	11.1
4+89	LT	9.3
7+29	LT	6
7+66	LT	5.6
7+99	CL	11.1
8+73	LT	8.9
9+17	RT	11.1
9+37	CL	8.9
9+41	RT	8.9
9+61	RT	6.7
9+67	LT	11.1
9+85	CL	11.1
11+06	CL	8.9
12+89	CL	10
13+07	CL	8.9
13+63	RT	9.8
13+73	RT	11.1
14+28	LT	5.3
TOTAL		213

PAVEMENT PATCHING, TYPE III, 8 INCH		
COLLINSVILLE AVE		
Station	Offset	SQ YD
2+10	LT	19.4
8+89	CL	17.8
TOTAL		38

PAVEMENT PATCHING, TYPE IV, 8 INCH		
COLLINSVILLE AVE		
Station	Offset	SQ YD
3+89	RT	44.4
6+06	CL	88.9
6+96	CL	66.7
8+36	CL	44.4
13+86	CL	25.7
TOTAL		271

PAVEMENT PATCHING, TYPE I, 8 INCH		
COLLINSVILLE AVE		
Station	OFFSET	SQ YD
1+37	LT	4.7
1+44	LT	3.9
1+45	CL	4.7
1+92	LT	1
1+94	RT	2
2+44	LT	1
3+01	LT	1.7
4+48	LT	3.3
5+05	RT	2
5+62	CL	0.7
5+64	CL	4
5+66	CL	0.7
5+79	CL	3.1
6+48	CL	1.7
6+65	CL	0.4
6+88	CL	1.3
6+89	RT	0.7
7+21	RT	1.7
7+21	RT	1
7+24	RT	4
7+38	RT	1.8
7+46	LT	4
7+49	CL	2.2
7+50	RT	1
7+62	RT	4
7+62	LT	4
8+24	RT	3
8+83	LT	1
9+05	CL	4.4
9+14	RT	1.7
9+41	LT	4.7
9+81	LT	1.8
10+64	CL	4
10+92	CL	1
11+23	CL	2.2
11+23	RT	2.2
11+46	RT	1.8
12+32	RT	3.6
12+59	LT	2.2
13+32	RT	1.7
14+04	LT	1.8
14+04	LT	1.8
14+48	CL	1
14+68	RT	1.8
14+78	LT	1.8
14+88	RT	3
TOTAL		108

THERMOPLASTIC PAVEMENT MARKING - LINE 4"				
COLLINSVILLE AVE				
SOLID DOUBLE YELLOW			FOOT	
01+06	TO	15+31	CL	2850
TOTAL				2850

THERMOPLASTIC PAVEMENT MARKING - LINE 12"			
COLLINSVILLE AVE			
			FOOT
00+40.00		RT/LT	84
00+67.00		LT	122
00+83.00		RT	112
01+18.00		RT/LT	86
TOTAL			404

COMBINATION CONCRETE CURB AND GUTTER, TY B-6.24				
COLLINSVILLE AVE				
COLLINSVILLE AVE	TO	RT/LT	FOOT	
00+16.21	TO	00+41.00	LT	47
00+33.00	TO	00+58.00	RT	51
TOTAL				98

WATER VALVES TO BE ADJUSTED				
COLLINSVILLE AVE				
STA	OFFSET		EACH	
01+13.00	8.00	RT		1
01+29.00	12.00	RT		1
03+90.00	12.00	RT		1
09+20.00	12.00	RT		1
13+64.00	12.00	RT		1
TOTAL				5

MANHOLES TO BE ADJUSTED				
COLLINSVILLE AVENUE				
STA	OFFSET		EACH	
01+69.00	27.00	LT		1
03+19.00	1.00	LT		1
04+71.00	27.00	LT		1
04+79.00	17.00	LT		1
05+28.00	26.00	LT		1
05+41.00	24.00	LT		1
06+17.00	30.00	LT		1
06+35.00	1.00	LT		1
06+39.00	30.00	LT		1
06+58.00	30.00	LT		1
09+52.00	1.00	LT		1
09+98.00	28.00	LT		1
13+04.00	0.00	RT		1
15+74.00	17.00	LT		1
TOTAL				14

INLETS TO BE ADJUSTED				
COLLINSVILLE AVE				
STA	OFFSET		EACH	
00+37.00	28.00	LT		1
00+52.00	21.00	RT		1
01+06.00	27.00	LT		1
01+16.00	22.00	RT		1
TOTAL				4

INLETS TO BE ADJUSTED WITH NEW TYPE 3 FRAME AND GRATE				
COLLINSVILLE AVE				
STA	OFFSET		EACH	
09+16.00	21.00	LT		1
09+91.00	21.00	LT		1
TOTAL				2

AREA REFLECTIVE CRACK CONTROL TREATMENT			
COLLINSVILLE AVENUE			
COLLINSVILLE AVENUE	TO		SQ YD
01+05.96	TO	15.31.04	6474
TOTAL			6474

THERMOPLASTIC PAVEMENT MARKING -LINE 24"			
COLLINSVILLE AVE			
			FOOT
01+25.00		LT	20
TOTAL			20

ENTRANCE SCHEDULE										
STATION	OFFSET	ENTRANCE TYPE	EXISTING SURFACE TYPE	ENTRANCE WIDTH (FOOT)	ENTRANCE DEPTH "D" (FOOT)	DRIVEWAY PAVT REM (SQ YD)	AGG BASE CSE A 6 (SQ YD)	AGG SURF CSE A 8 (SQ YD)	PCC DRIVEWAY PAVT 6 (SQ YD)	PCC DRIVEWAY PAVT 8 (SQ YD)
COLLINSVILLE AVE										
01+52.00	RT	COMMERCIAL	CONC	24		69	37			37
02+10.00	RT	COMMERCIAL	CONC	24		54	37			37
03+78.00	LT	COMMERCIAL	AGG	24	2.9		21	8		21
04+79.00	LT	COMMERCIAL	AGG	24	2.8		21	7		21
05+20.00	LT					23				
08+66.00	LT	RESIDENTIAL	ASPH	18		25	27		27	
10+44.00	LT	COMMERCIAL	CONC	24	3.5	19	29			29
12+33.00	LT	COMMERCIAL	CONC	24	3.5	12	29			29
14+21.00	LT	COMMERCIAL	CONC	24	3.5	11	28			28
TOTAL						213	229	15	27	202

PORTLAND CEMENT CONCRETE SIDEWALK 4 INCH				
COLLINSVILLE AVE				
COLLINSVILLE AVE	TO	OFFSET	SQ FT	
01+24.00	TO	03+66.00	LT	1428
02+22.00	TO	09+25.00	RT	4601
03+89.00	TO	04+68.00	LT	423
04+91.00	TO	08+58.00	LT	3302
08+75.00	TO	10+33.00	LT	1340
10+56.00	TO	12+22.00	LT	948
12+45.00	TO	14+10.00	LT	915
14+33.00	TO	15+71.00	LT	871
TOTAL				13828

PORTLAND CEMENT CONCRETE SIDEWALK 6 INCH				
COLLINSVILLE AVE				
COLLINSVILLE AVE	TO	OFFSET	SQ FT	
00+16.21	TO	00+41.00	LT	409
00+33.00	TO	00+57.00	RT	300
01+06.00	TO	01+25.00	LT	257
01+06.00	TO	01+41.00	RT	304
01+64.00	TO	01+99.00	RT	295
15+61.00	TO	15+71.00	LT	72
TOTAL				1637

DETECTABLE WARNINGS			
COLLINSVILLE AVE			
COLLINSVILLE AVE	OFFSET	SQ FT	
00+28.00	LT		12
00+37.00	LT		12
00+40.00	RT		12
00+54.00	RT		12
01+06.00	LT		12
01+06.00	RT		12
01+12.00	LT		12
01+18.00	RT		12
15+68.00	LT		12
TOTAL			96

PAVEMENT REMOVAL			
COLLINSVILLE AVE			
COLLINSVILLE AVE	TO	RT/LT	SQ YD
00+44.00	TO	00.56.00	6
15+54.00	TO	15+73.00	7
TOTAL			13

CURB REMOVAL			
COLLINSVILLE AVE			
COLLINSVILLE AVE	TO	RT/LT	FOOT
01+06.00	TO	15+71.00	1513
01+06.00	TO	09+25.00	857
TOTAL			2370

COMBINATION CURB AND GUTTER REMOVAL			
COLLINSVILLE AVE			
COLLINSVILLE AVE	TO	RT/LT	FOOT
00+16.21	TO	00+41.00	47
00+33.00	TO	00+58.00	49
TOTAL			96

SIDEWALK REMOVAL			
COLLINSVILLE AVE			
COLLINSVILLE AVE	TO	R/LT	SQ FT
00+16.21	to	00+41.00	406
00+33.00	to	00+58.00	273
01+06.00	to	02+94.00	1825
01+06.00	to	01+35.00	276
04+49.00	to	05+36.00	751
05+19.00	to	05+58.00	357
05+80.00	to	08+58.00	2518
08+20.00	to	09+25.00	961
08+75.00	to	10+36.00	1448
10+53.00	to	12+29.00	1676
12+38.00	to	14+17.00	1745
14+27.00	to	14+89.00	547
15+49.00	to	15+71.00	234
TOTAL			13016

CONCRETE CURB, TYPE B			
COLLINSVILLE AVE			
COLLINSVILLE AVE	TO	RT/LT	FOOT
01+06.00	TO	15+71	1516
01+06.00	TO	09+25	821
TOTAL			2337

EARTH EXCAVATION					
Location					
From	To	Earth Excavation	Excavation to be used in Embankment*	Embankment	Earthwork Balance**
		Cubic Yard	Cubic Yard	Cubic Yard	Cubic Yard
0+16.21	15+81.04	RT	90		0
0+16.21	15+81.04	LT	161		0
Total			251	0	0
		USE	251		

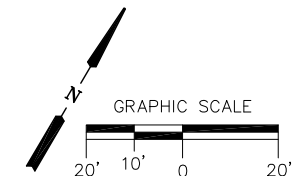
SEEDING, CLASS 2A				
COLLINSVILLE AVE				
COLLINSVILLE AVE	to	ACRE	ACRE	
01+06.00	to	15+31.00	RT	0.08
01+06.00	to	15+31.00	LT	0.06
USE				0.25

NITROGEN FERTILIZER NUTRIENT		
See Seeding	Acre	POUND
	0.25	22.5
Total		23

PHOSPHORUS FERTILIZER NUTRIENT		
See Seeding	Acre	POUND
	0.25	22.5
Total		23

POTASSIUM FERTILIZER NUTRIENT		
See Seeding	Acre	POUND
	0.25	22.5
Total		23

MULCH METHOD 2</				
------------------	--	--	--	--

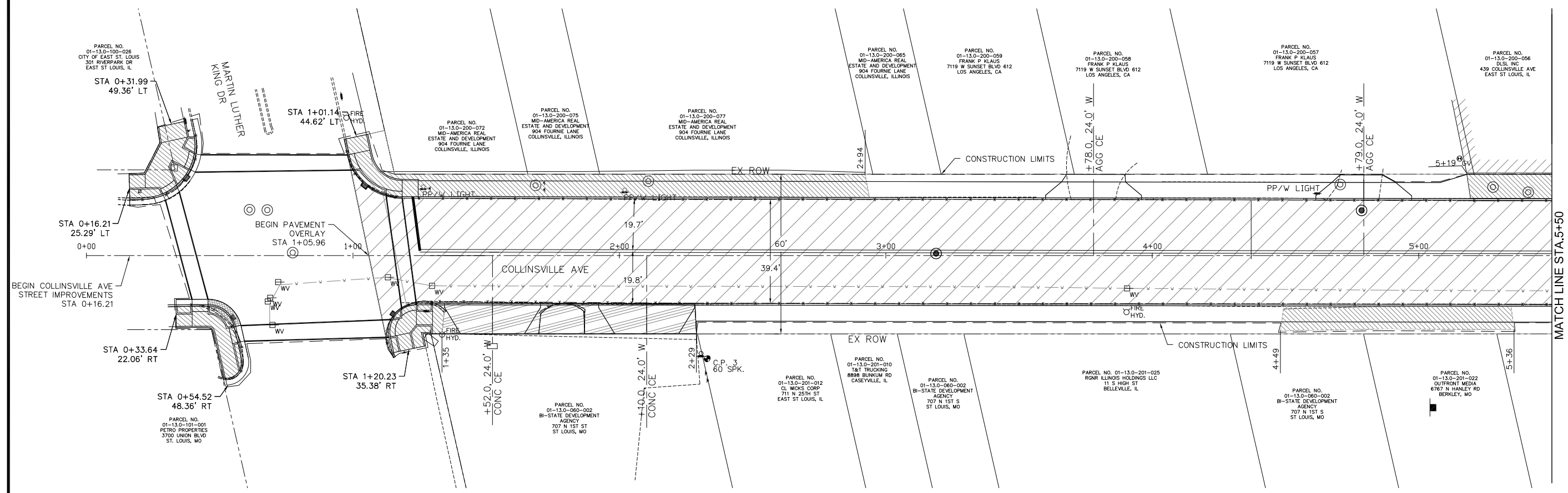


Hurst-Rosche, Inc.
PROFESSIONAL DESIGN NUMBER: 194-00298

5 Bank Square
E. St. Louis, IL
618.398.0890 t
www.hurst-rosche.com

HILLSBORO, IL
MARION, IL
SPRINGFIELD, IL
ARNOLD, MO
NEOSHO, MO
NASHVILLE, TN

PREPARED FOR:



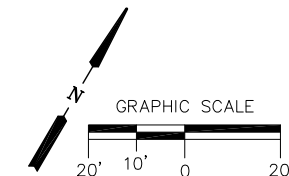
PHASE 1 COLLINSVILLE AVE. IMPROVEMENTS
CITY OF EAST ST. LOUIS
ST. CLAIR COUNTY, ILLINOIS

MARK	DATE	DESCRIPTION
	04/2021	

PROJECT NO: 220-1549
DESIGN: SMS DRAWN: SMS CHECK: JJC

REMOVAL PLAN

- LEGEND**
- PAVEMENT REHABILITATION AREA
 - DRIVEWAY PAVEMENT REMOVAL
 - SIDEWALK REMOVAL
 - PAVEMENT REMOVAL
 - LINEAR REMOVAL ITEM

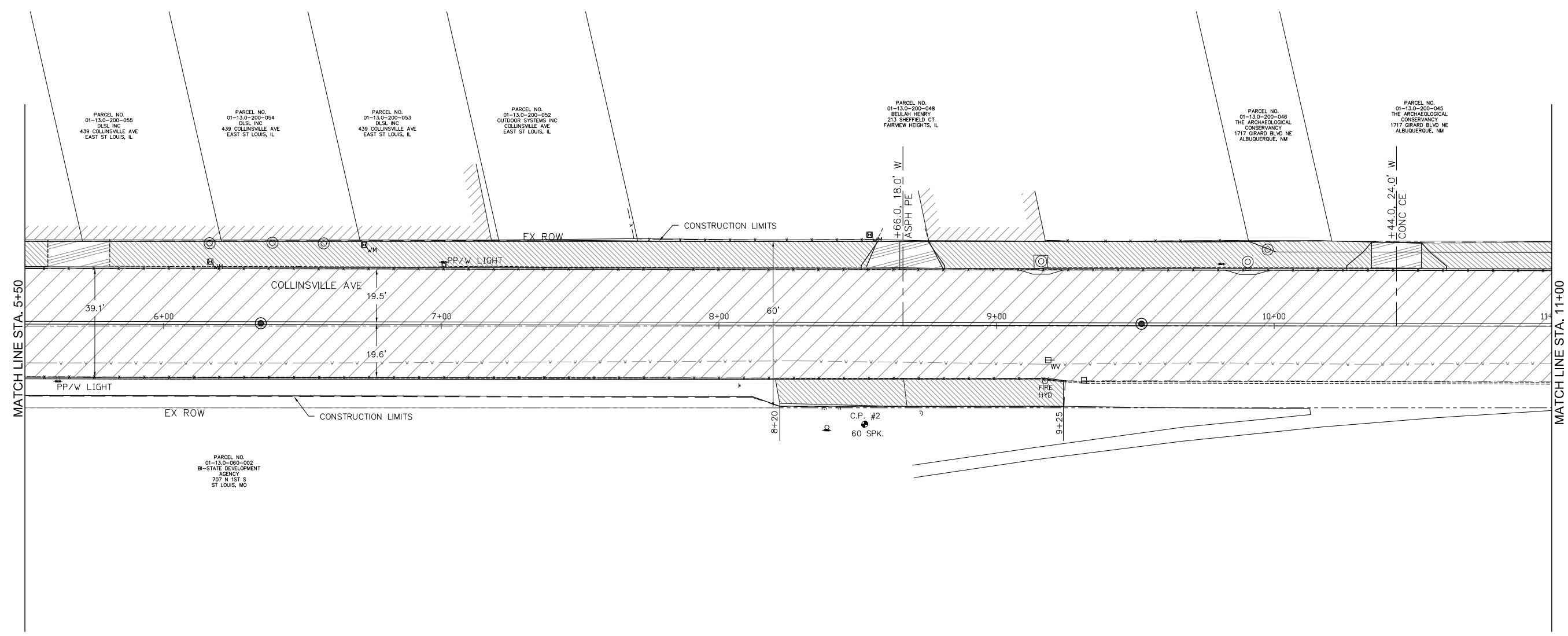


Hurst-Rosche, Inc.
PROFESSIONAL DESIGN NUMBER: 194-00298

5 Bank Square
E. St. Louis, IL
618.398.0890 t
www.hurst-rosche.com

HILLSBORO, IL
MARION, IL
SPRINGFIELD, IL
ARNOLD, MO
NEOSHO, MO
NASHVILLE, TN

PREPARED FOR:



PHASE 1 COLLINSVILLE AVE. IMPROVEMENTS
CITY OF EAST ST. LOUIS
ST. CLAIR COUNTY, ILLINOIS

MARK	DATE	DESCRIPTION
	04/2021	

PROJECT NO: 220-1549
DESIGN: SMS DRAWN: SMS CHECK: JJC

REMOVAL PLAN

- LEGEND**
- PAVEMENT REHABILITATION AREA
 - DRIVEWAY PAVEMENT REMOVAL
 - SIDEWALK REMOVAL
 - PAVEMENT REMOVAL
 - LINEAR REMOVAL ITEM

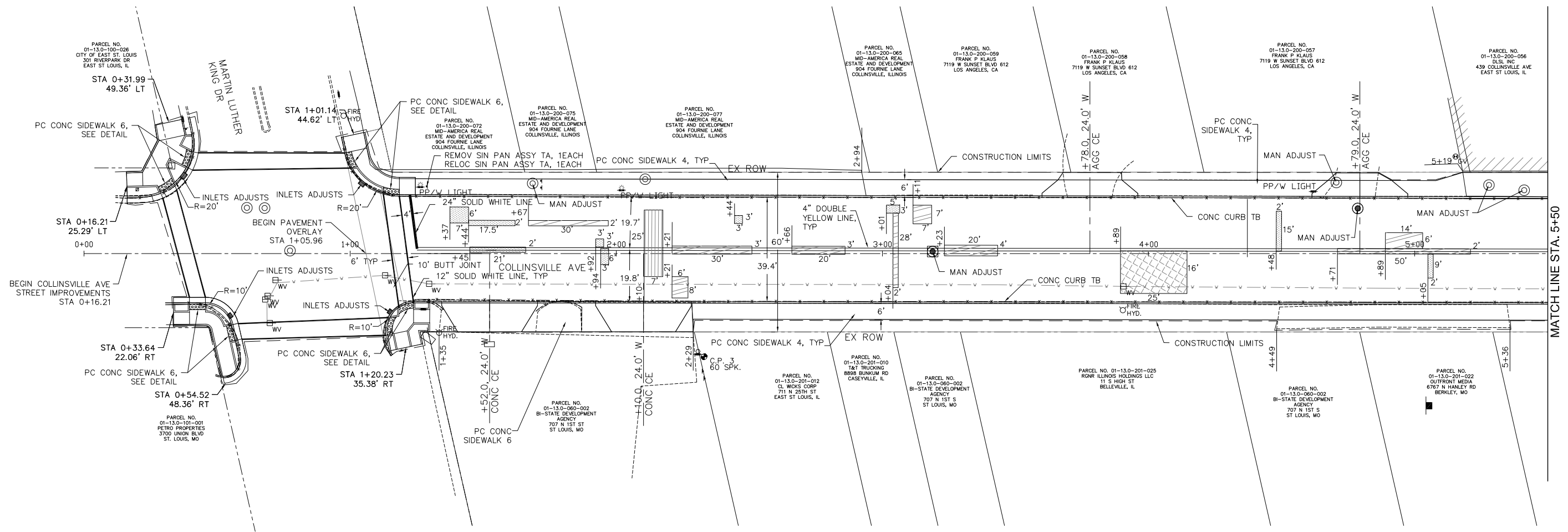
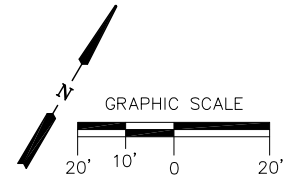


Hurst-Rosche, Inc.
PROFESSIONAL DESIGN NUMBER: 194-000298

5 Bank Square
E. St. Louis, IL
618.398.0890 t
www.hurst-rosche.com

HILLSBORO, IL
MARION, IL
SPRINGFIELD, IL
ARNOLD, MO
NEOSHO, MO
NASHVILLE, TN

PREPARED FOR:



PHASE 1 COLLINSVILLE AVE. IMPROVEMENTS
CITY OF EAST ST. LOUIS
ST. CLAIR COUNTY, ILLINOIS

MARK	DATE	DESCRIPTION
	04/2021	

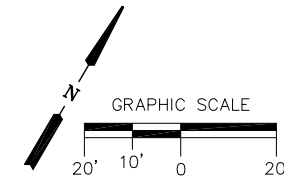
PROJECT NO: 220-1549
DESIGN: SMS DRAWN: SMS CHECK: JUC

ROADWAY PLAN

- LEGEND**
- PAVEMENT PATCH TYPE I
 - PAVEMENT PATCH TYPE II
 - PAVEMENT PATCH TYPE III
 - PAVEMENT PATCH TYPE IV

09

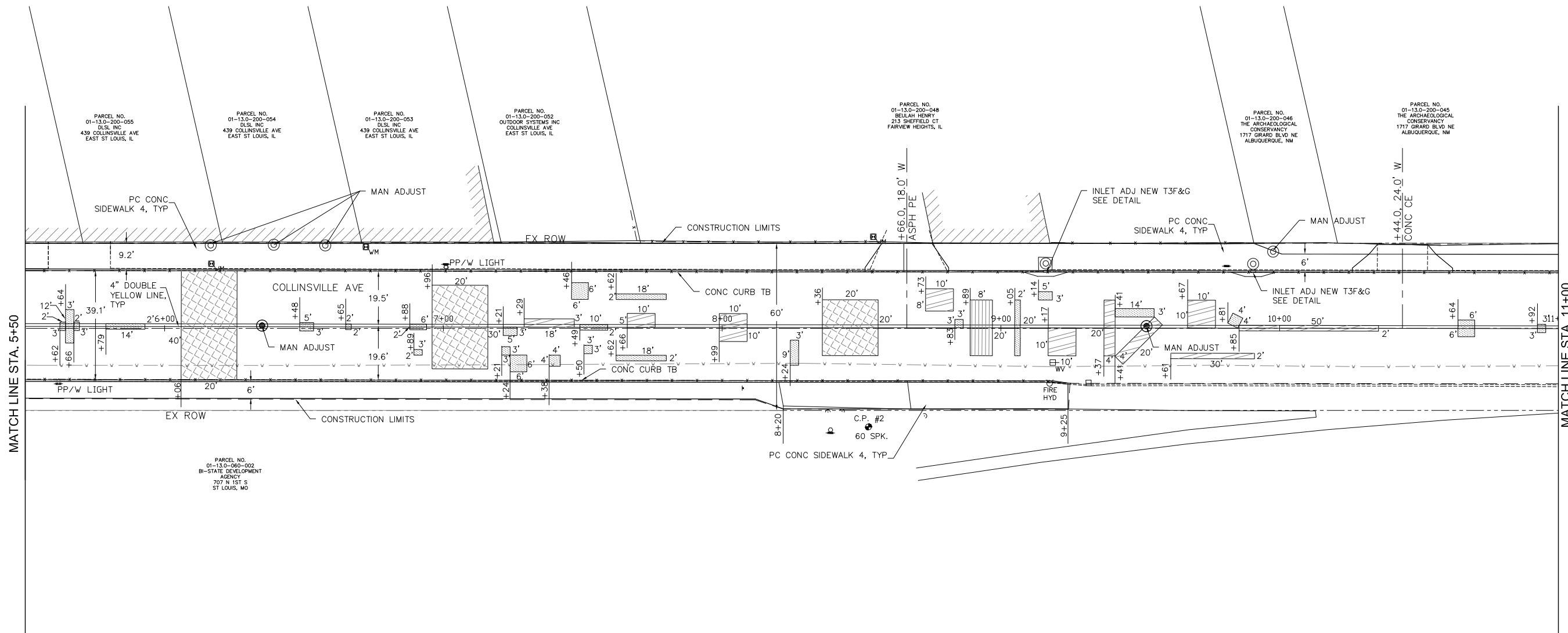
SHEET 09 OF 12



Hurst-Rosche, Inc.
 PROFESSIONAL DESIGN NUMBER: 184-001298
 5 Bank Square
 E. St. Louis, IL
 618.398.0890 t
 www.hurst-rosche.com

HILLSBORO, IL
 MARION, IL
 SPRINGFIELD, IL
 ARNOLD, MO
 NEOSHO, MO
 NASHVILLE, TN

PREPARED FOR:



MATCH LINE STA. 5+50

MATCH LINE STA. 11+00

PHASE 1 COLLINSVILLE AVE. IMPROVEMENTS
CITY OF EAST ST. LOUIS
ST. CLAIR COUNTY, ILLINOIS

MARK	DATE	DESCRIPTION
	04/2021	

PROJECT NO: 220-1549
 DESIGN: SMS DRAWN: SMS CHECK: JJC

ROADWAY PLAN

LEGEND

	PAVEMENT PATCH TYPE I
	PAVEMENT PATCH TYPE II
	PAVEMENT PATCH TYPE III
	PAVEMENT PATCH TYPE IV

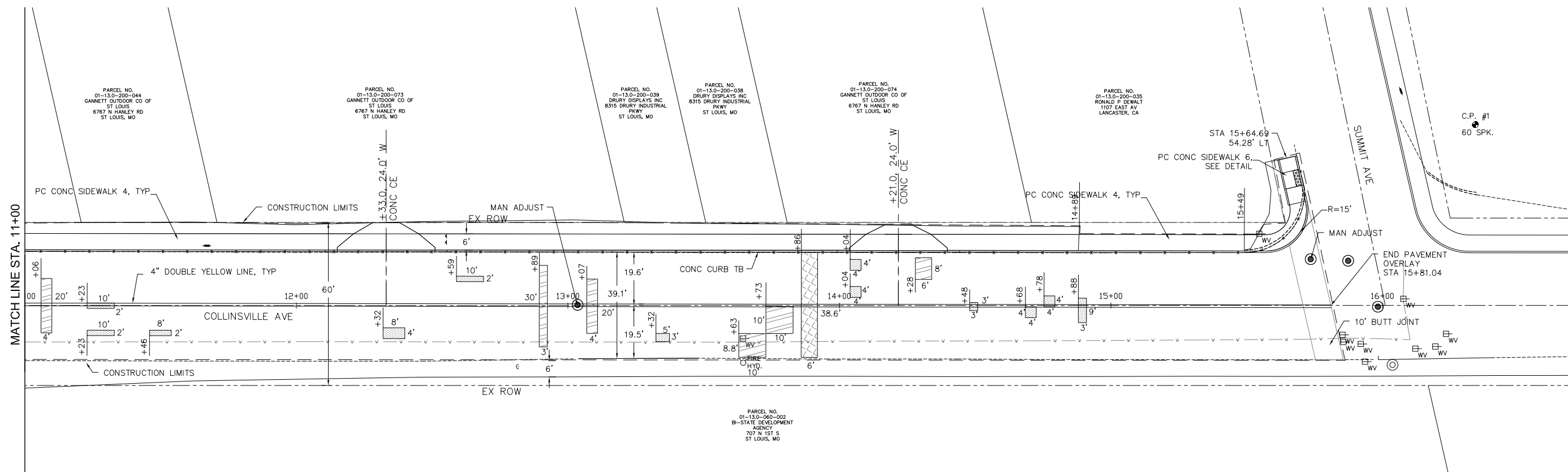
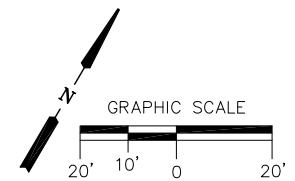


Hurst-Rosche, Inc.
PROFESSIONAL DESIGN NUMBER: 184-000288

5 Bank Square
E. St. Louis, IL
618.398.0890 t
www.hurst-rosche.com

HILLSBORO, IL
MARION, IL
SPRINGFIELD, IL
ARNOLD, MO
NEOSHO, MO
NASHVILLE, TN

PREPARED FOR:



PHASE 1 COLLINSVILLE AVE. IMPROVEMENTS
CITY OF EAST ST. LOUIS
ST. CLAIR COUNTY, ILLINOIS

MARK	DATE	DESCRIPTION
	04/2021	

PROJECT NO: 220-1549
DESIGN: SMS DRAWN: SMS CHECK: JJC

ROADWAY PLAN

LEGEND

	PAVEMENT PATCH TYPE I
	PAVEMENT PATCH TYPE II
	PAVEMENT PATCH TYPE III
	PAVEMENT PATCH TYPE IV



Hurst-Rosche, Inc.
PROFESSIONAL DESIGN NUMBER: 184-00298

5 Bank Square
E. St. Louis, IL
618.398.0890 t
www.hurst-rosche.com

HILLSBORO, IL
MARION, IL
SPRINGFIELD, IL
ARNOLD, MO
NEOSHO, MO
NASHVILLE, TN

PREPARED FOR:

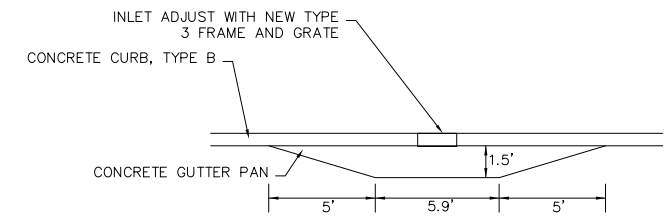
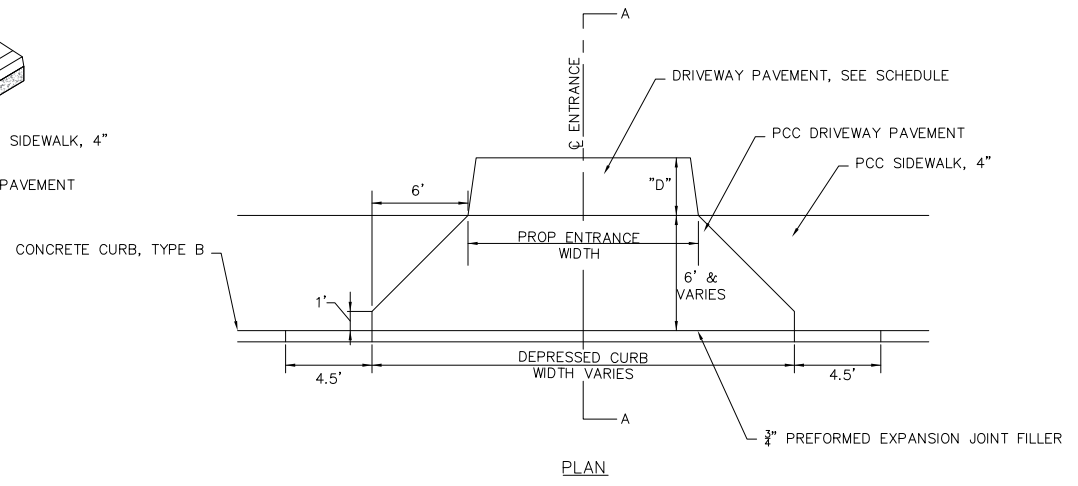
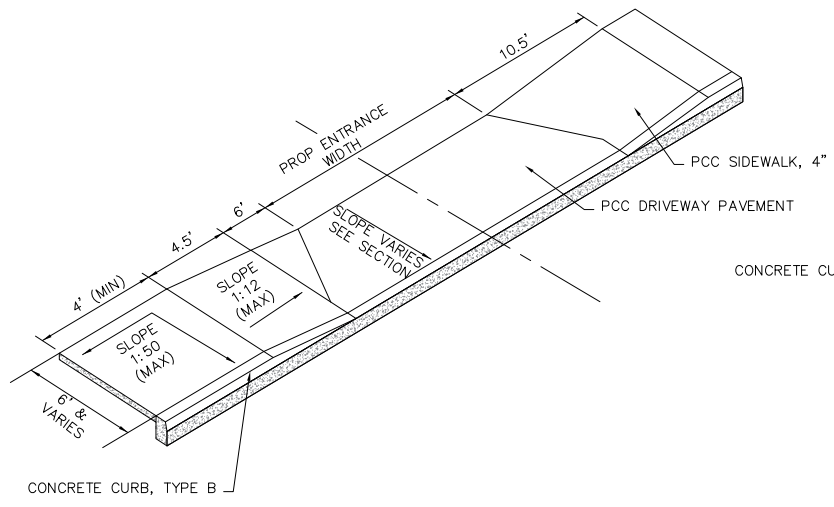
CONTRACT NO 97759
SEC NO 17-00213-01-RS

PHASE 1 COLLINSVILLE AVE. IMPROVEMENTS
CITY OF EAST ST. LOUIS
ST. CLAIR COUNTY, ILLINOIS

MARK	DATE	DESCRIPTION
	04/2021	

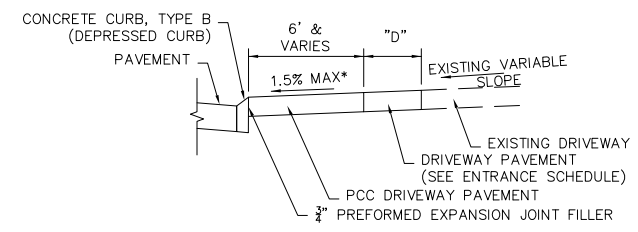
PROJECT NO: 220-1549
DESIGN: SMS DRAWN: SMS CHECK: JJC

MISCELLANEOUS
DETAILS



CONCRETE GUTTER PAN TO BE CONSTRUCTED PER IDOT STANDARDS FOR COMBINATION CURB AND GUTTER, TYPE B AND THIS DETAIL TO ALLOW PROPER DRAINAGE TO NEW INLET FRAME AND GRATE. THIS WORK IS INCIDENTAL TO THE CONTRACT AND NO ADDITIONAL COMPENSATION WILL BE ALLOWED.

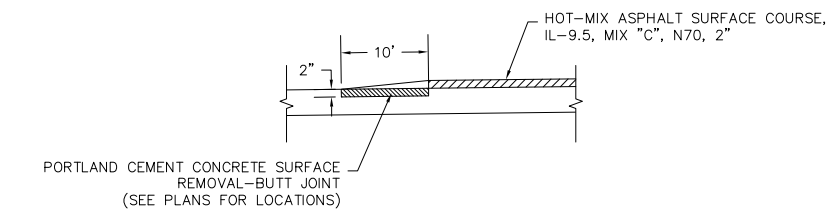
INLETS TO BE ADJUST WITH NEW TYPE 3 FRAME AND GRATE
NOT TO SCALE



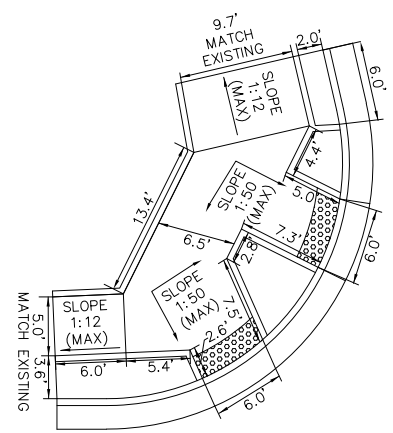
*DRIVEWAY TO MAINTAIN A 4' PEDESTRIAN ACCESSIBLE PATH (PAR) AT THE BACK OF THE DRIVEWAY WITH A 1.5% MAXIMUM SLOPE. THE FIRST 2' FROM THE BACK OF CURB CAN HAVE A VARIABLE SLOPE TO ALLOW THE DRIVEWAY TO BE BUILT WITHIN CONSTRUCTION LIMITS.

SECTION A-A

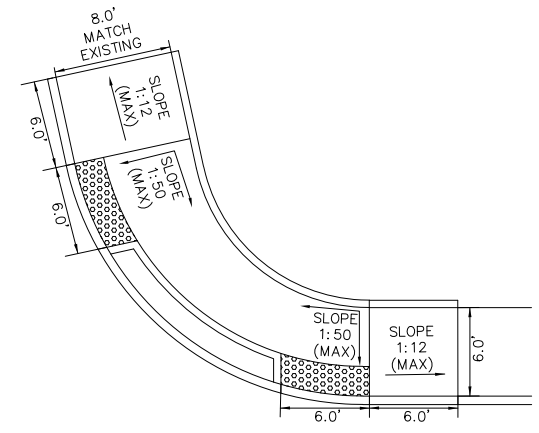
TYPICAL ENTRANCE DETAIL
NOT TO SCALE



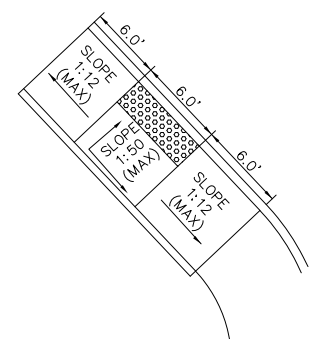
BUTT JOINT DETAIL
NOT TO SCALE



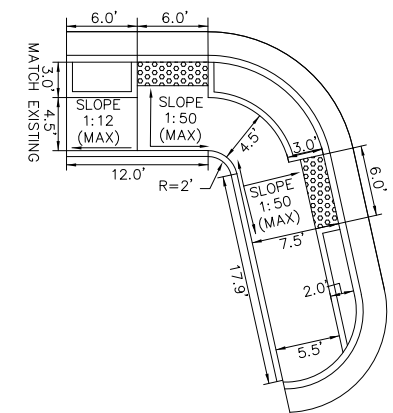
NORTHWEST QUADRANT COLLINSVILLE AVENUE WITH MLK DRIVE



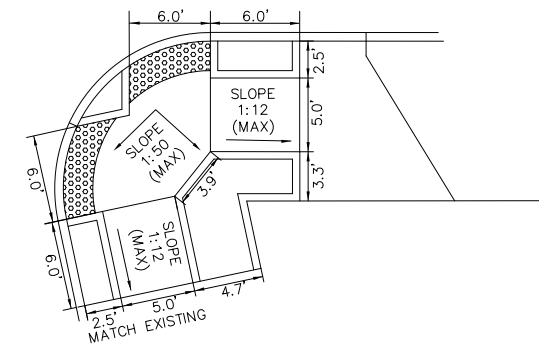
NORTHEAST QUADRANT COLLINSVILLE AVENUE WITH MLK DRIVE



NORTHWEST QUADRANT COLLINSVILLE AVE WITH SUMMIT AVENUE



SOUTHWEST QUADRANT COLLINSVILLE AVENUE WITH MLK DRIVE



SOUTHEAST QUADRANT COLLINSVILLE AVENUE WITH MLK DRIVE